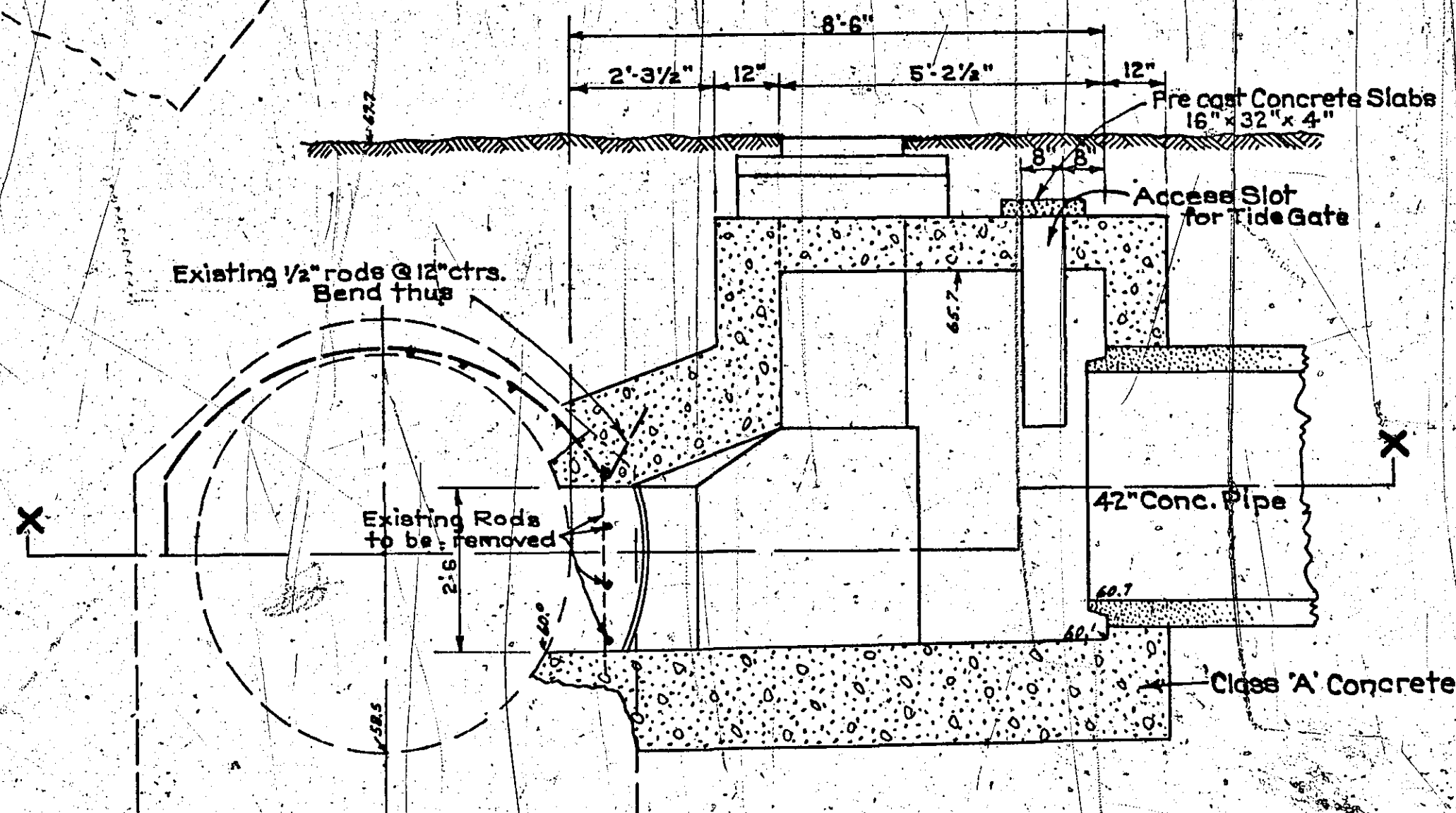
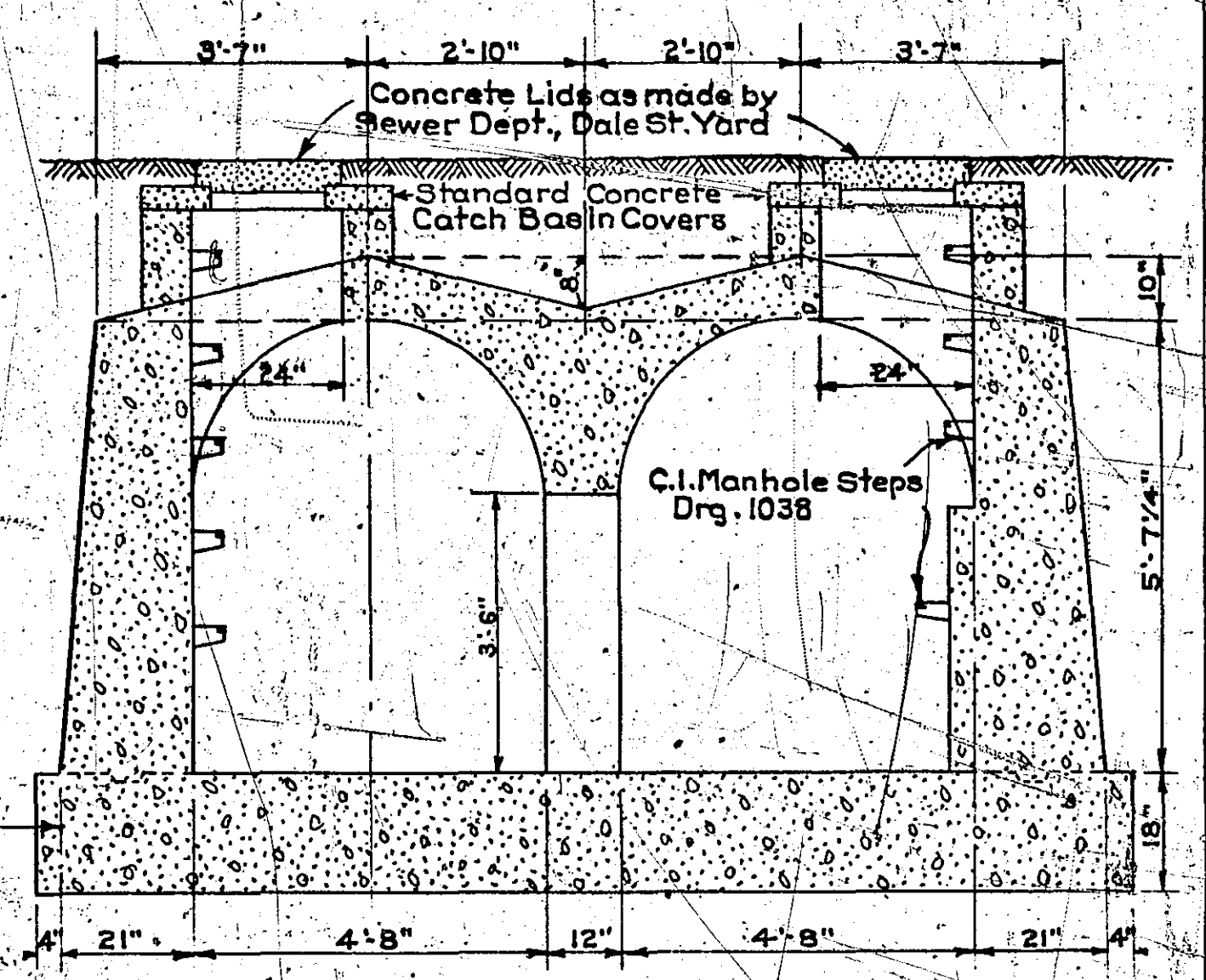


PLAN

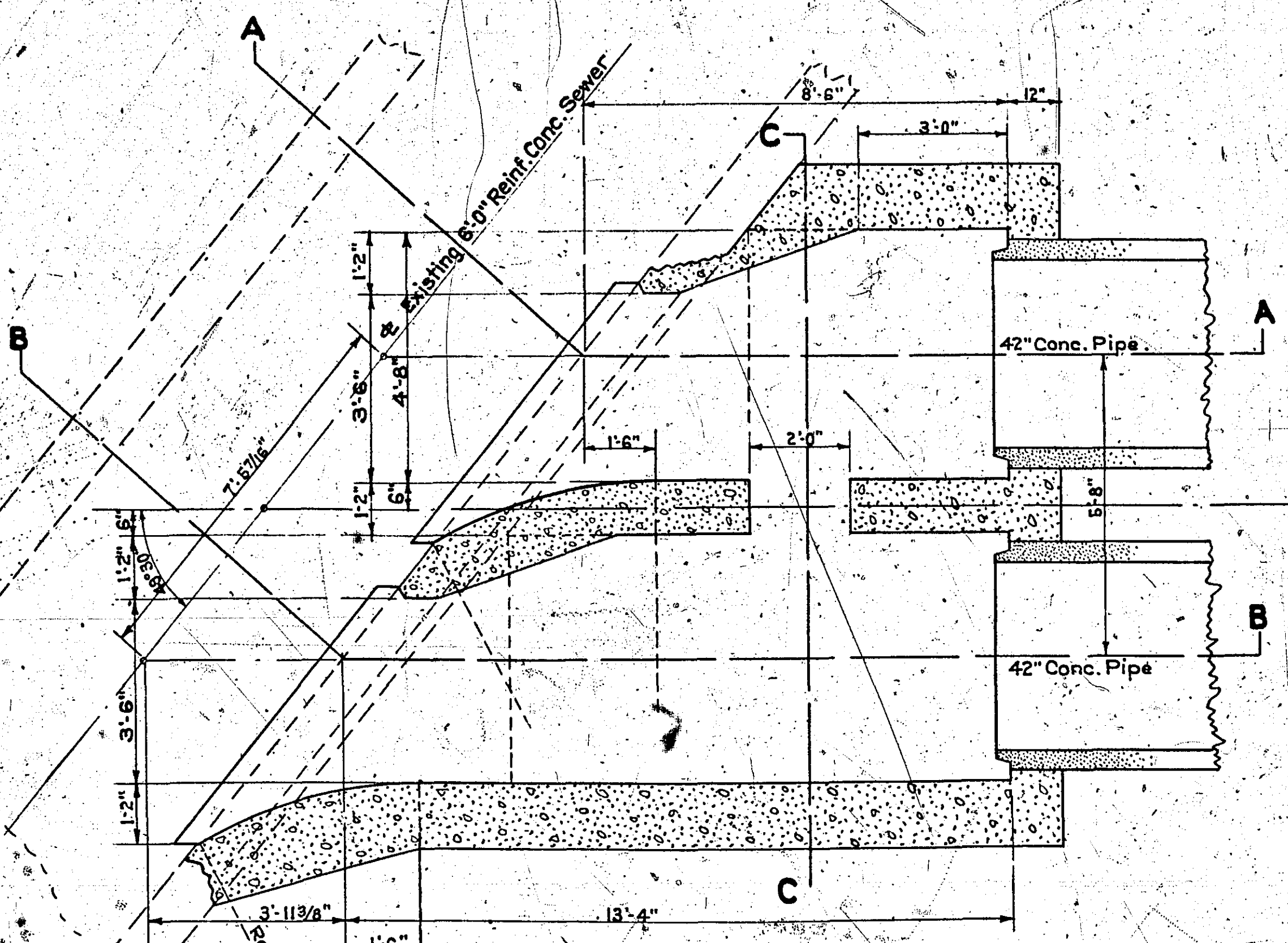


SECT. A-A

Sect. B-B same as A-A except for Length of Arched Section



SECT. C-C



SECT'L. PLAN
On Line X-X

JUNCTION
AND TIDE GATE CHAMBER
LAKE PHALEN OVERFLOW SEWER
St. Paul, Minn. 1942.
Scale: 3/8" = 1'-0"
DRG. 1196

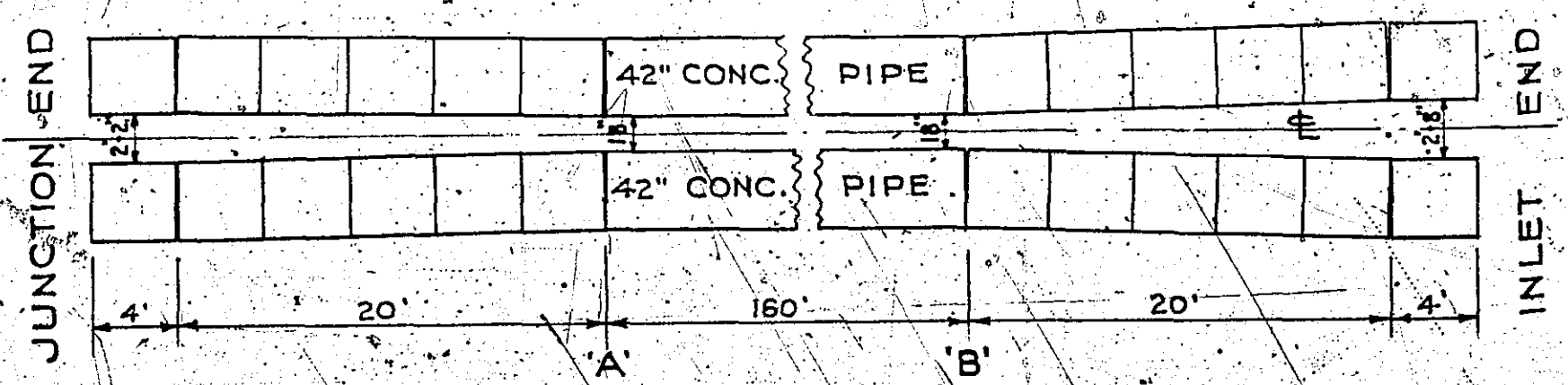
2-543

JUNCTION
TIDE GATE CHAMBER
LAKE PHALEN OVERFLOW
SEWER
SEW. DR. II No. 1196

42" CONCRETE PIPE
DOUBLE BARREL SEWER
LAKE PHALEN OVERFLOW

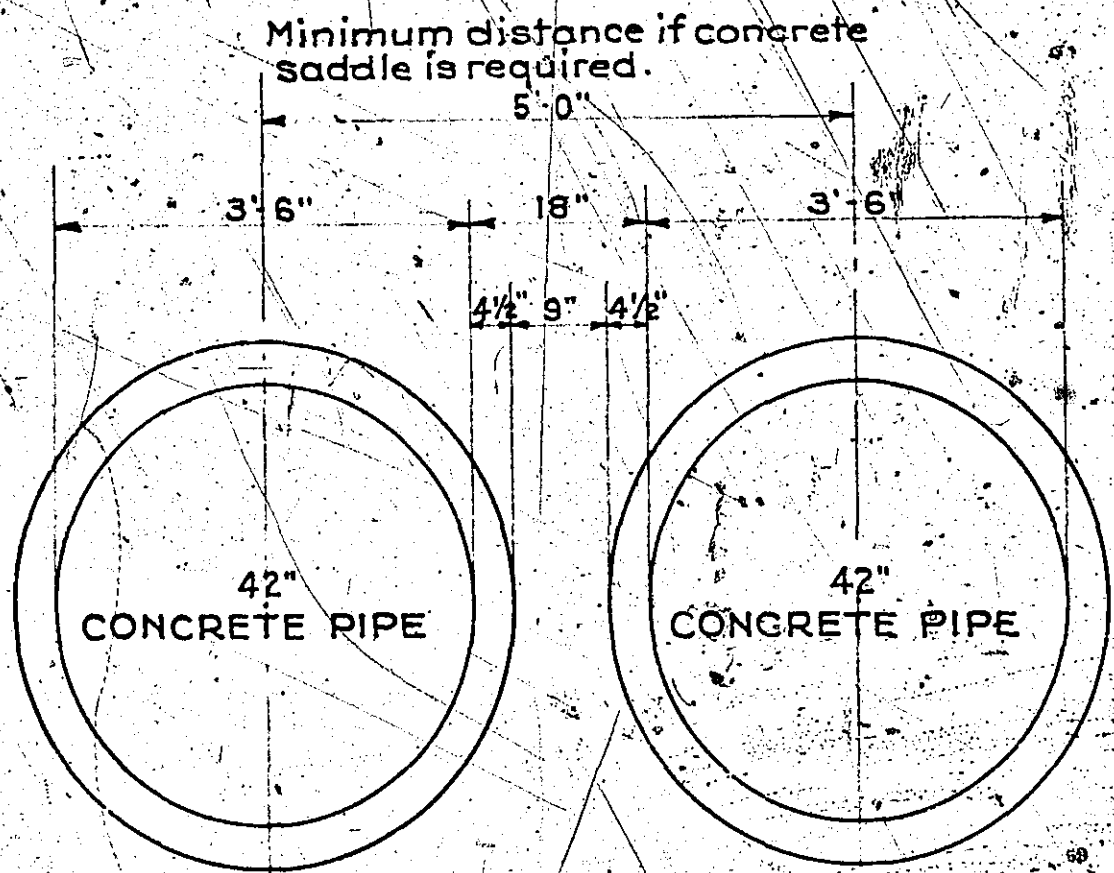
St. Paul, Minn.

DRG. 1201



PLAN

Showing variation in distance between pipes.
Distances shown are from inside to inside of pipes.
Separation of pipes to be increased if concrete
saddle is not required.



SECT. FROM A to B

42" CONC. PIPE
LAKE PHALEN OVERFLOW

SEW. DR. 3 No. 1201

**TIDE GATE
LAKE PHALEN OVERFLOW SEWER**

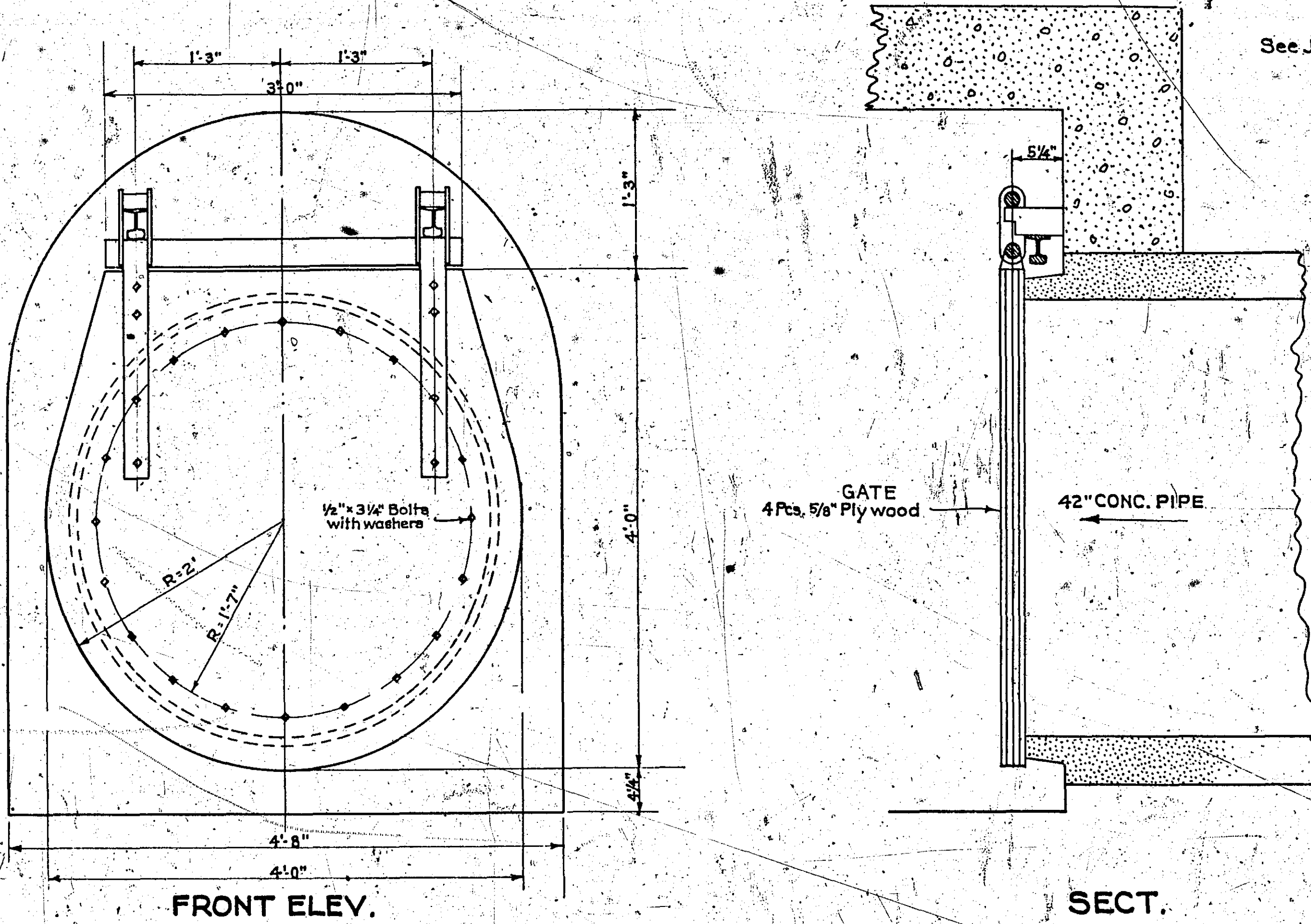
St. Paul, Minn. 1942
Scale as shown.

DRG. NO. 1202

GATE ASSEMBLY

Scale: 1" = 1'-0"

See Junction and Tide Gate Structure Drg. 1196

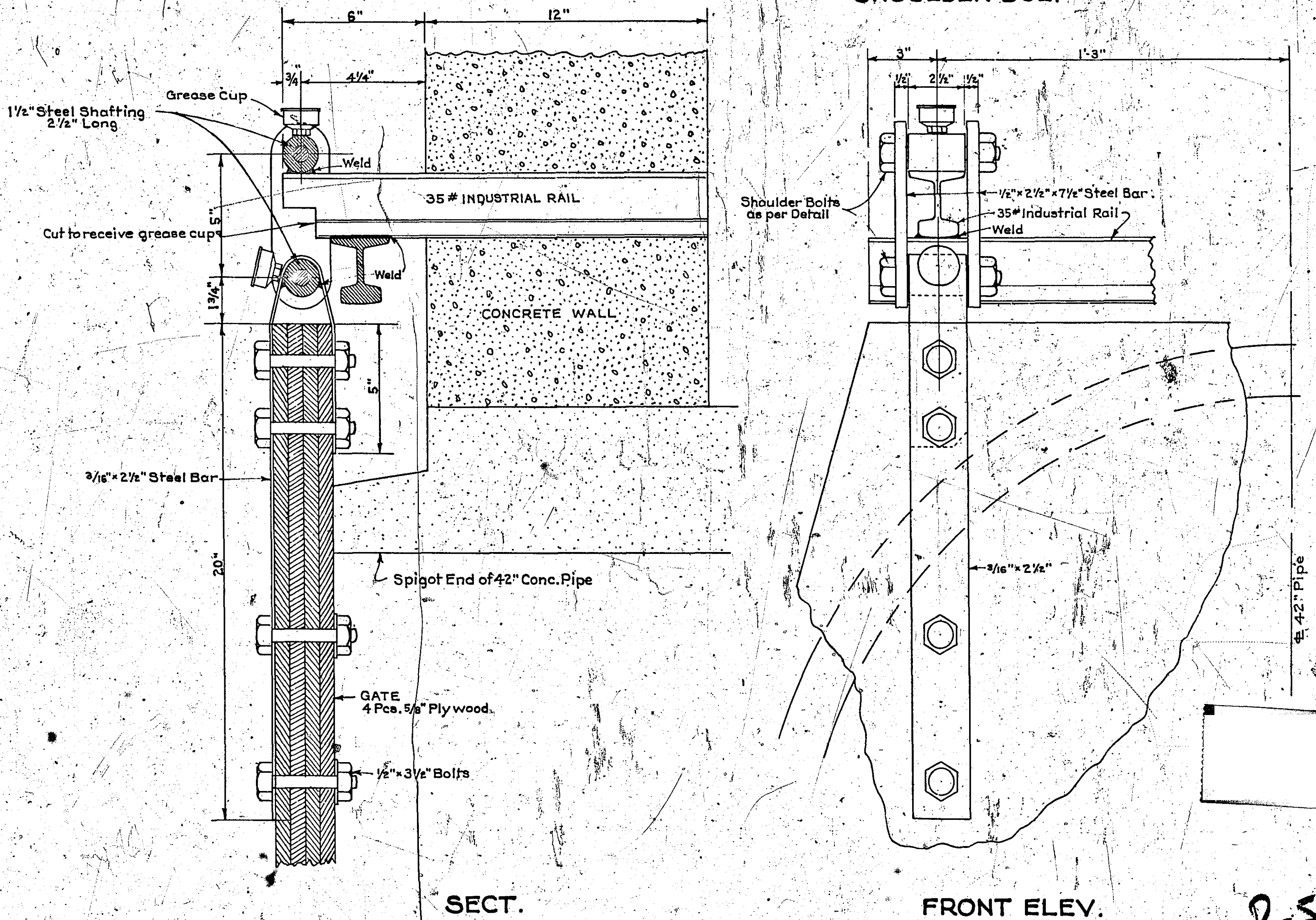


ALTERNATE CONSTRUCTION: Plywood Plates may be fastened together with a suitable waterproof glue and bolts omitted. Exposed surfaces to be thoroly coated with a preservative.

HINGE DETAILS

Scale: 1/4 Full Size.

SHOULDER BOLT



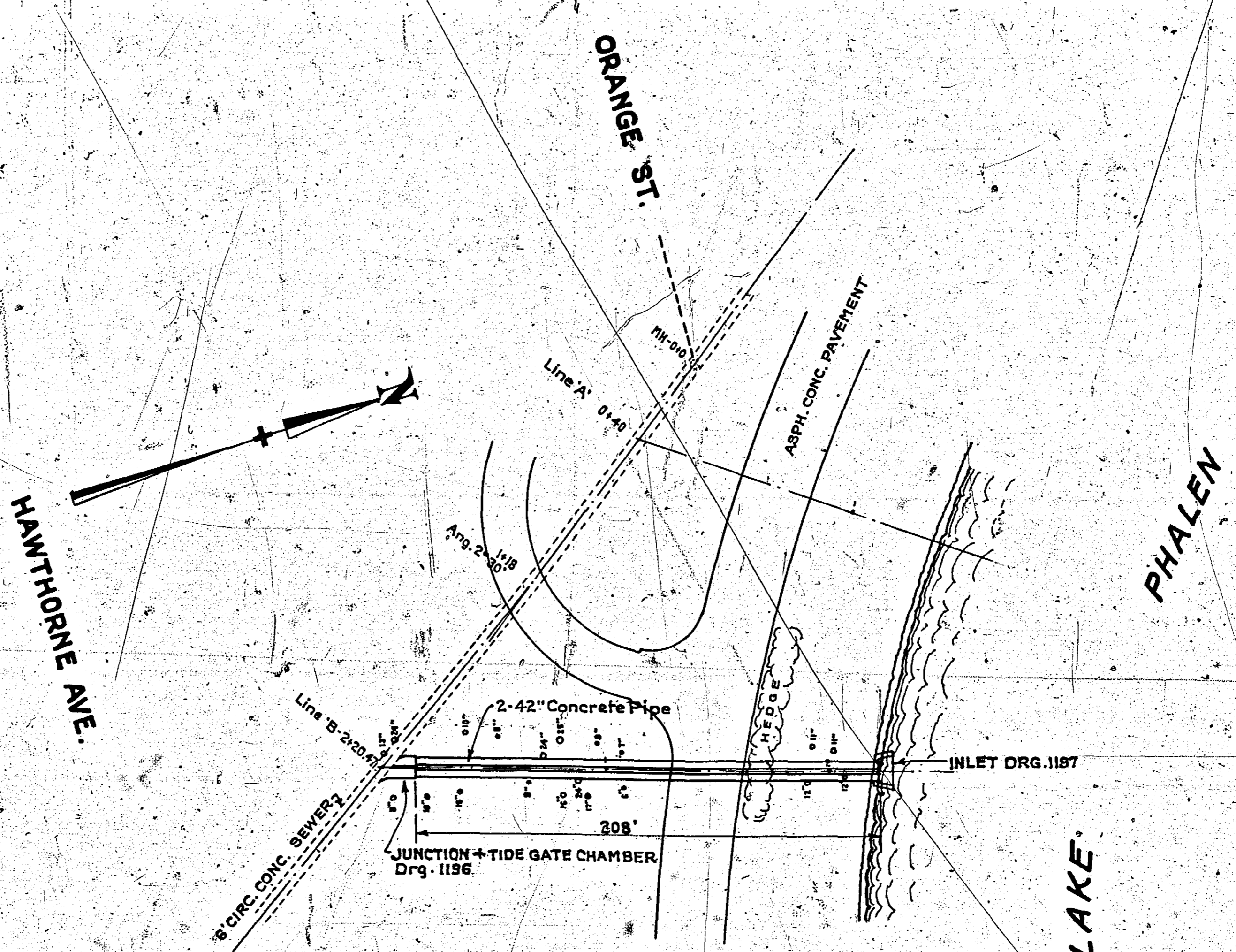
TIDE GATE
L. PHALEN OVERFLOW
SEW. DR. II No. 1202

2-543

TIDE GATE
LAKE PHALEN OVERFLOW SEWER
DEPT. PUBLIC WORKS
ST. LOUIS, MISSOURI



Lumber to be Fir or Pine and
free from knots or other imperfections
that would materially affect the strength.
It shall be glued with water-proof glue
and sufficient pressure applied to
produce a close bond between the
plys.



HAWTHORNE AVE.

ORANGE ST.

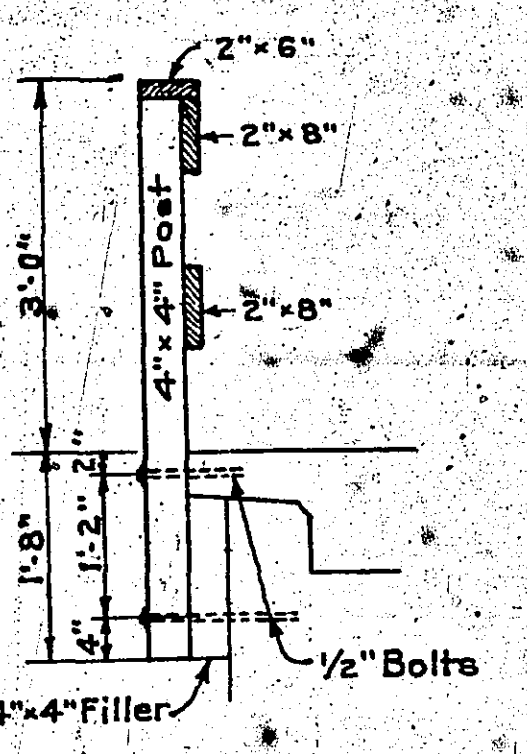
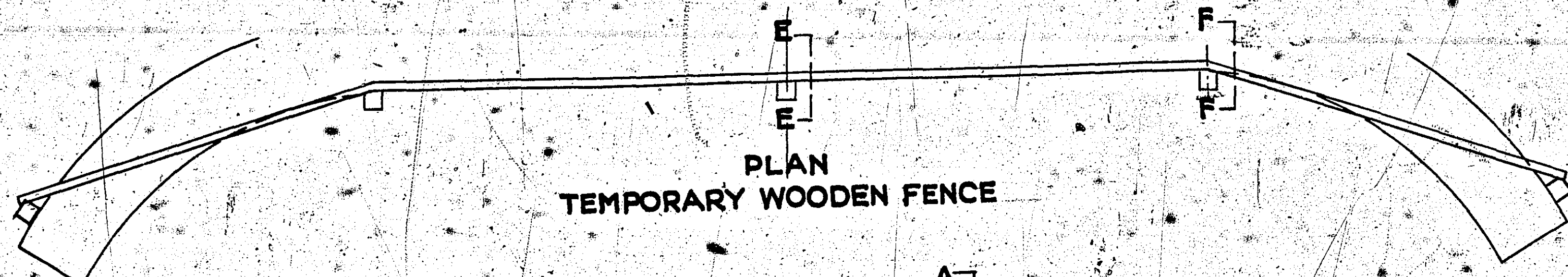
PHALEN

LAKE

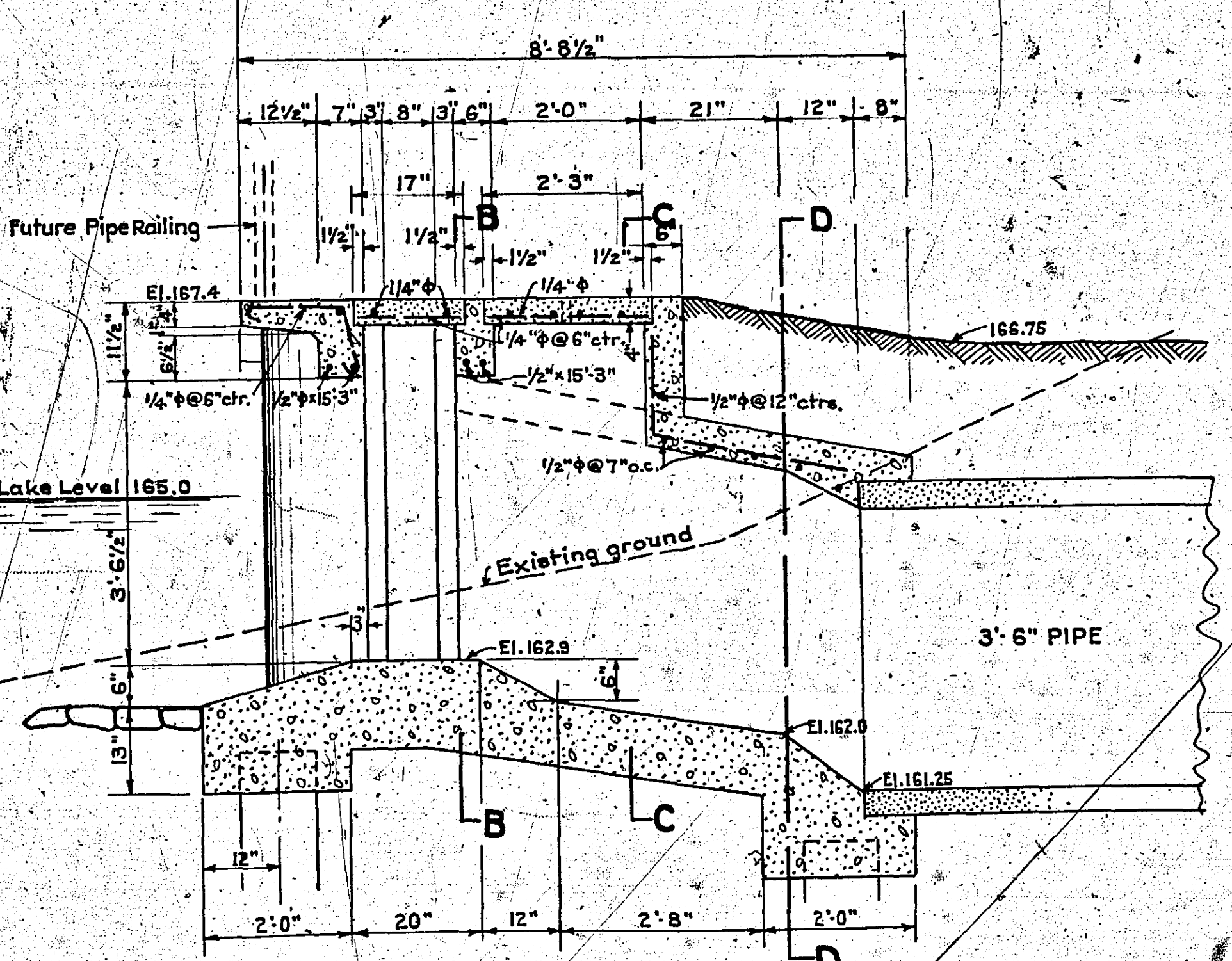
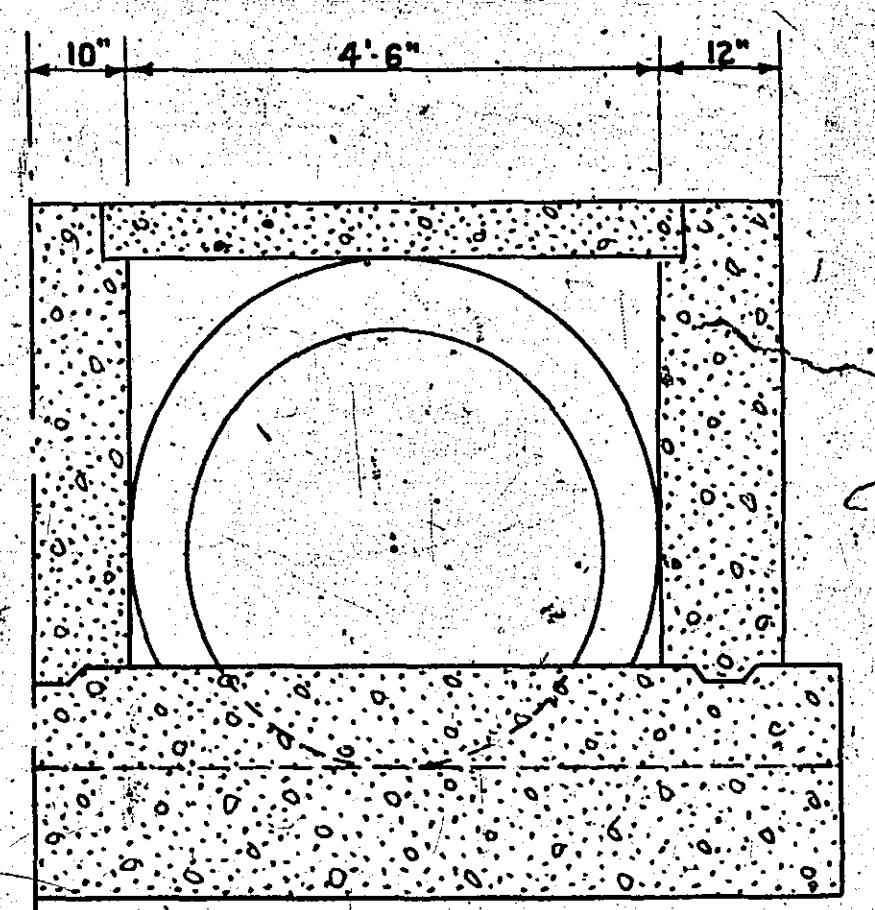
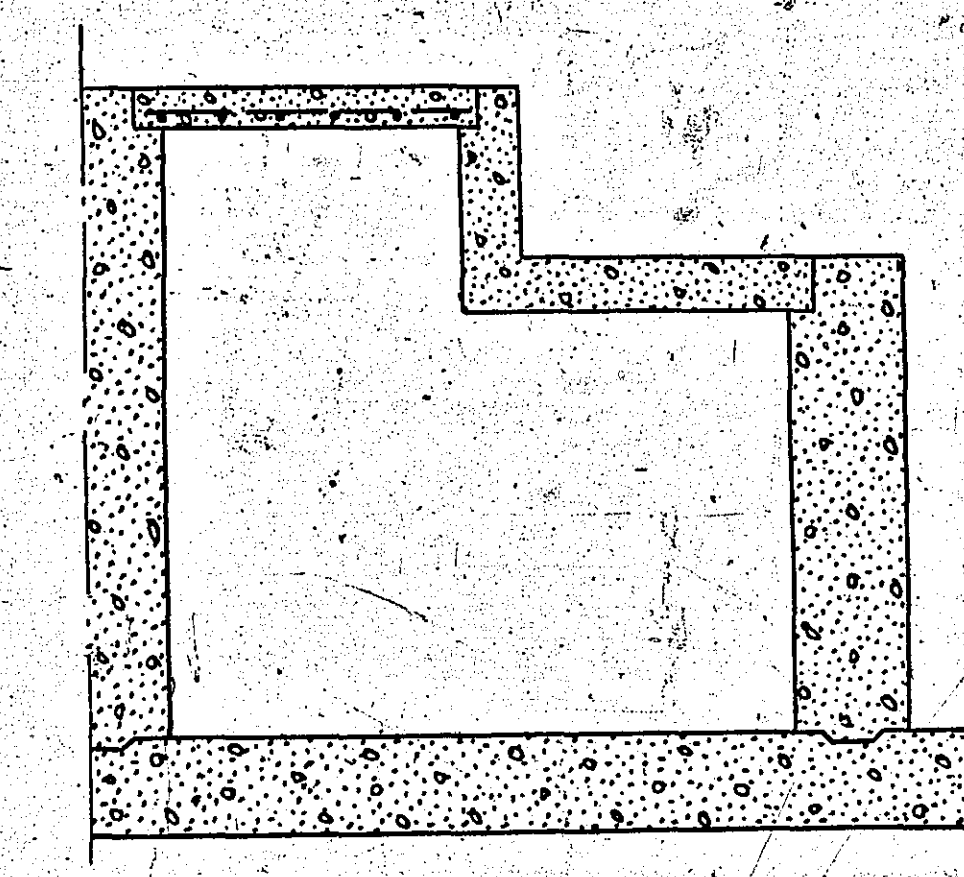
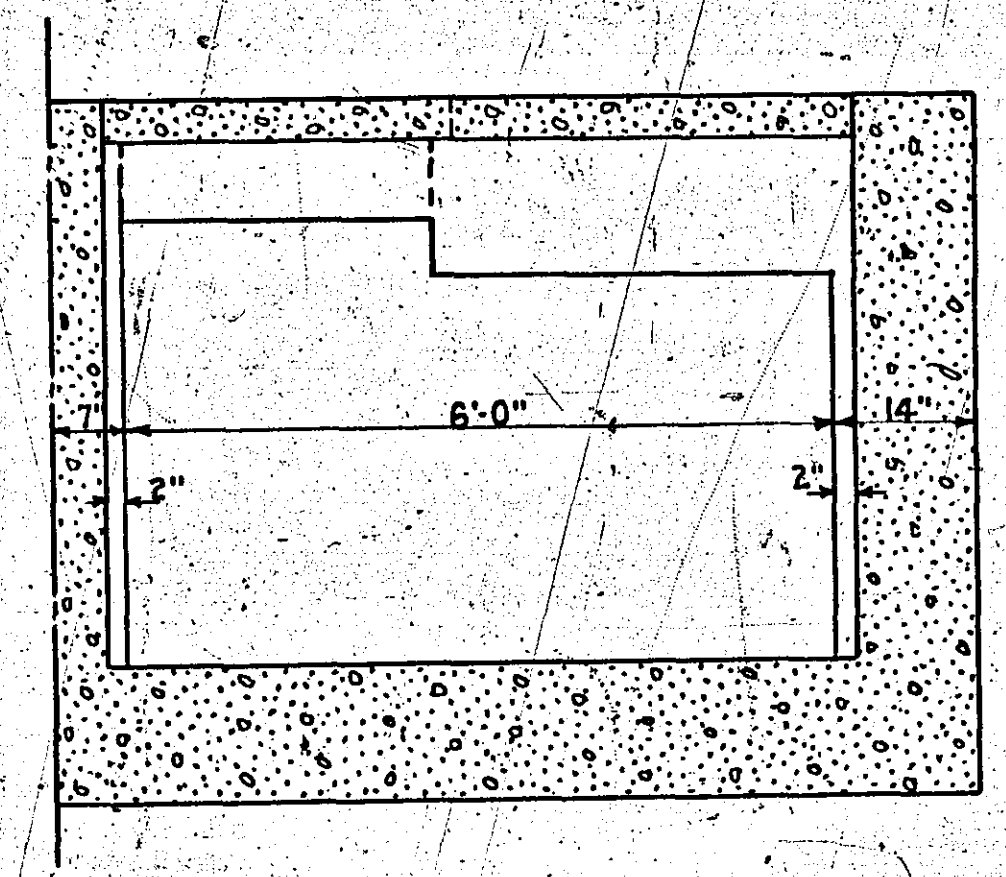
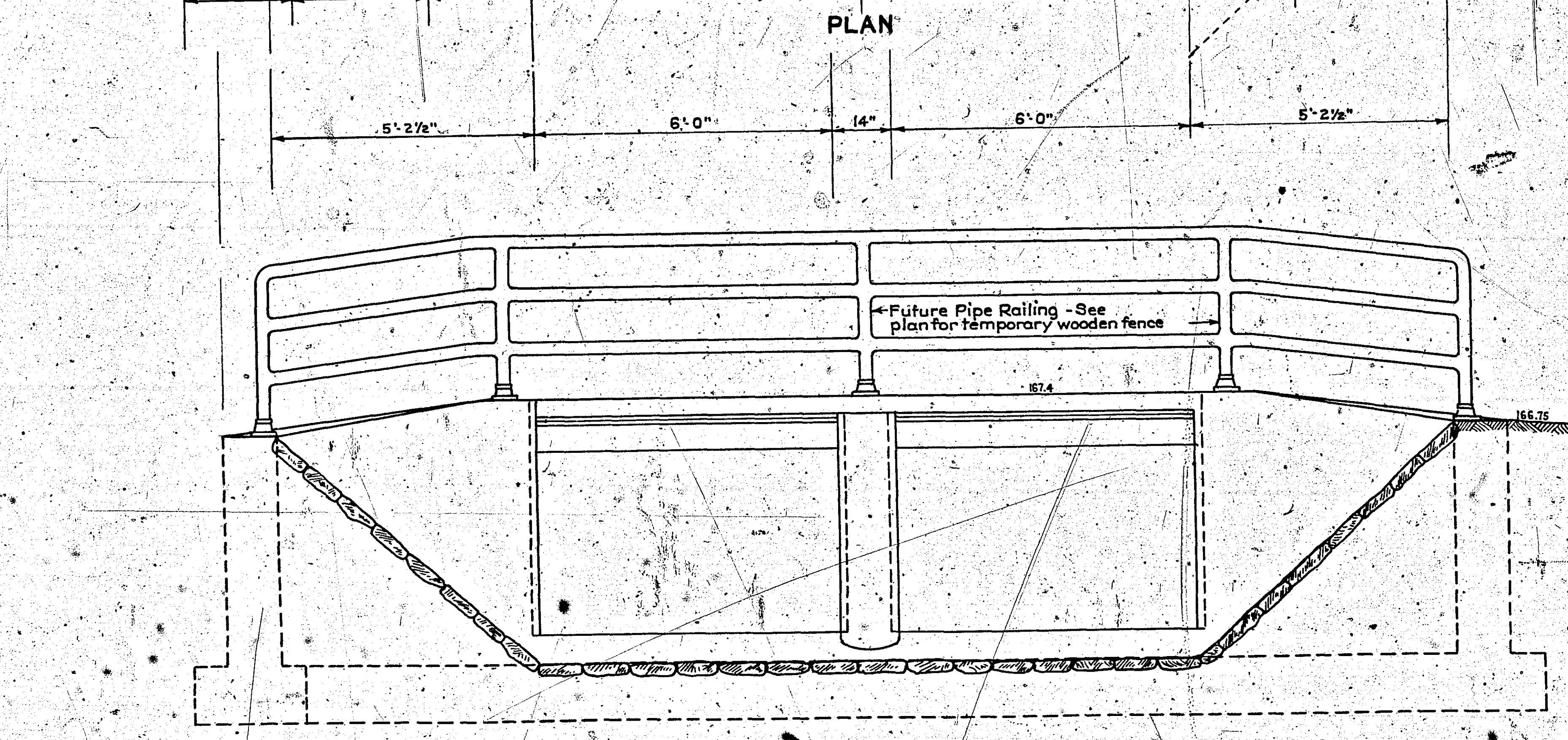
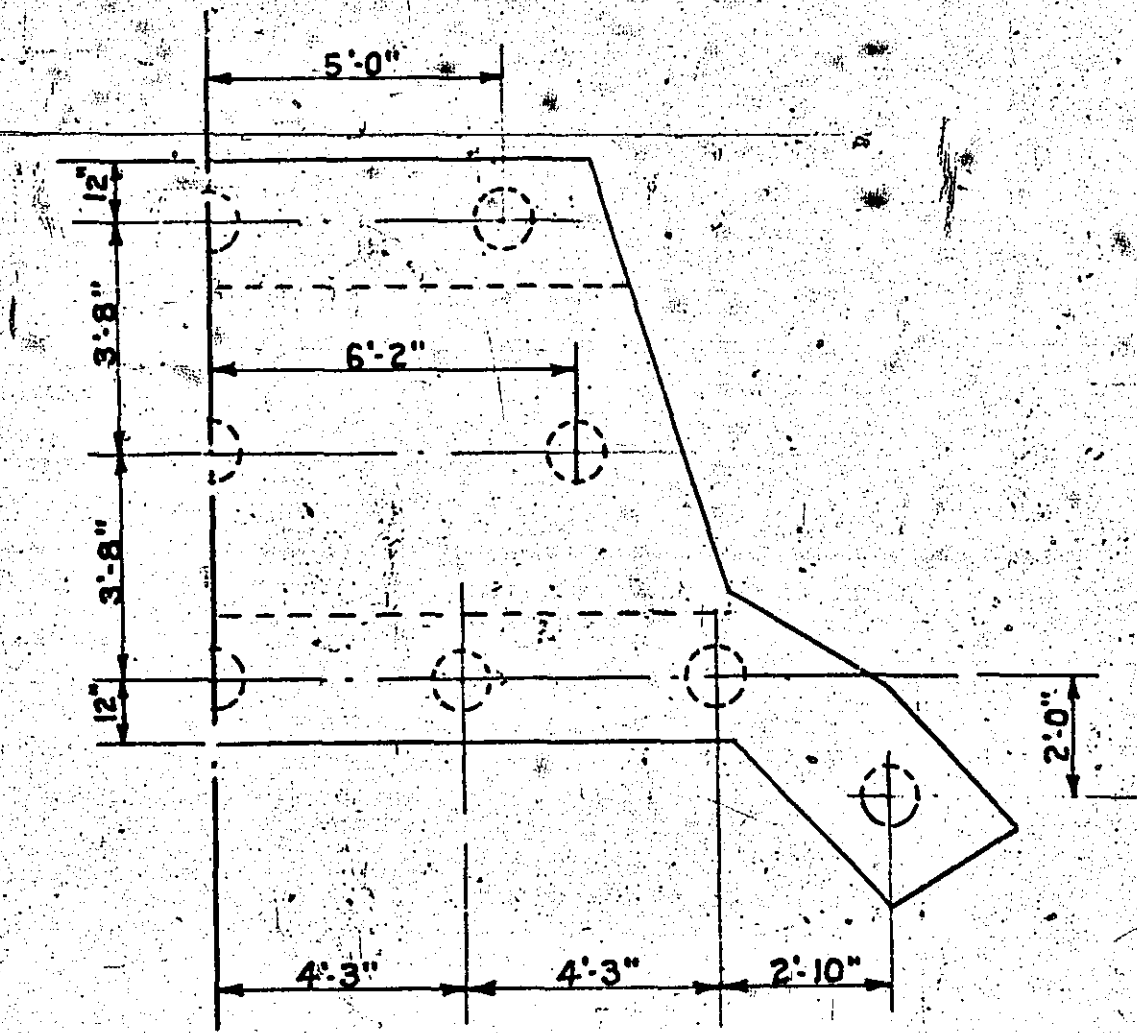
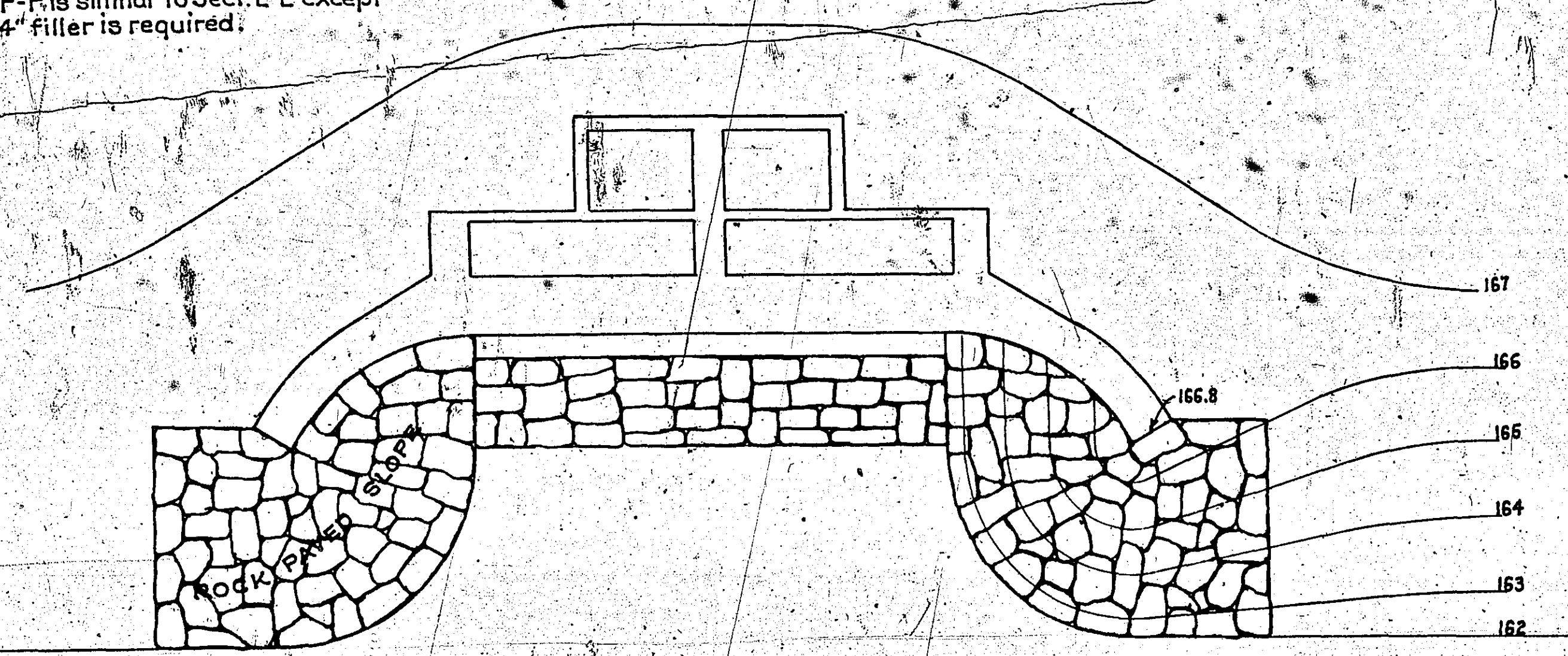
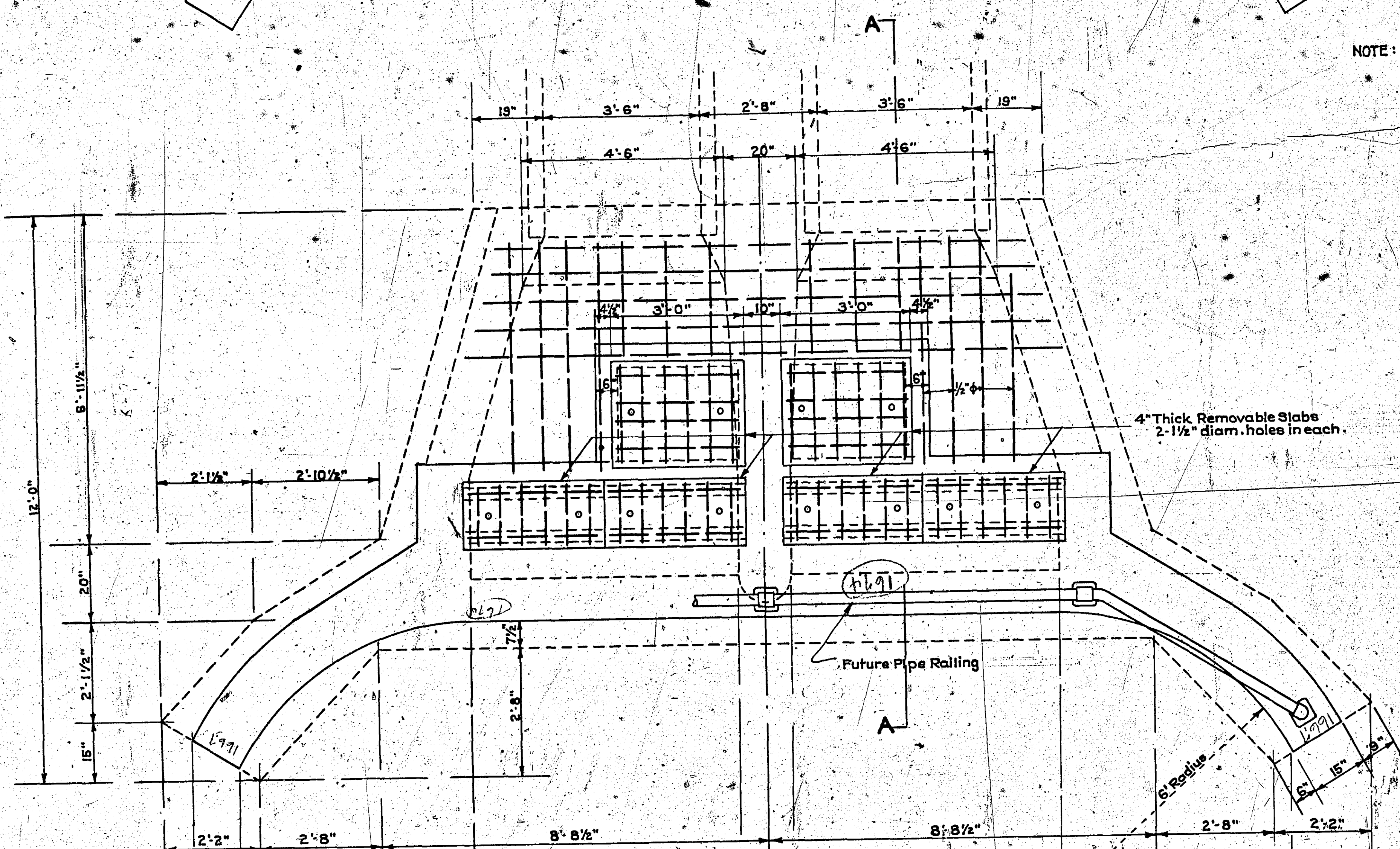
**LAKE PHALEN
OVERFLOW SEWER
PLAN & PROFILE**
St. Paul, Minn. 1942
Scale: 1" = 50'
DRG. 1198

12-5-43

LAKE PHALEN
OVERFLOW SEWER
SEW. DR. II No. 1198



NOTE: Section F-F is similar to Sect. E-E except no 4" x 4" filler is required.



STEEL LIST

NO	SIZE	LENGTH	FEET	1/2"	3/4"
1	1/2"	12'-0"	12		
1	1/2"	12'-3"	12.3		
1	1/2"	12'-6"	12.5		
1	1/2"	13'-0"	13		
1	1/2"	13'-6"	13.5		
2	1/2"	4'-0"	8.0		
6	1/2"	4'-0"	28.5		
6	1/2"	3'-8"	22.5		
5	1/2"	15'-3"	76.3		
24	1/4"	1'-4"	32		
16	1/4"	2'-10"	45.3		
12	1/4"	2'-2"	26		
24	1/4"	2'-8"	66		
			198.6	169.3	

INLET
LAKE PHALEN OVERFLOW SEWER
St. Paul, Minn. 1942
Scale: 1/4" = 1'-0" except as noted.
DRG. 1197

INLET
LAKE PHALEN OVERFLOW
SEWER, DR. II No. 1197

2-543