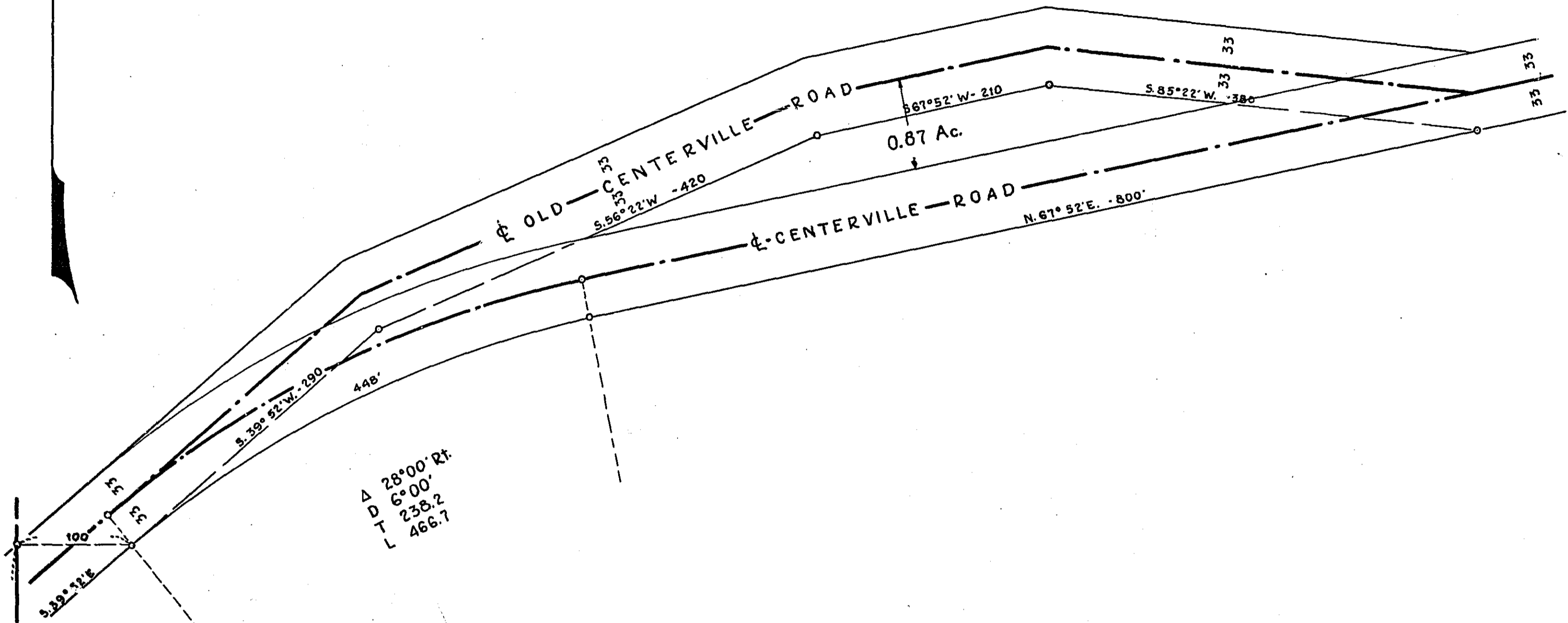


Davidson's
Stockdale
Farm



1070

OFFICE OF
RAMSEY COUNTY SURVEYOR
Harry S. Bronson
SKETCH OF PROPERTY ADJACENT TO
CENTERVILLE ROAD WHICH IS RAMSEY CO. PROPERTY
JUNE 1938 SCALE: 1"=100'

S.W. Cor. Sec. 28 Twp. 30N Rge 22W.

MICROFILMED
RAMSEY CO. ENG.

R-459

R-459