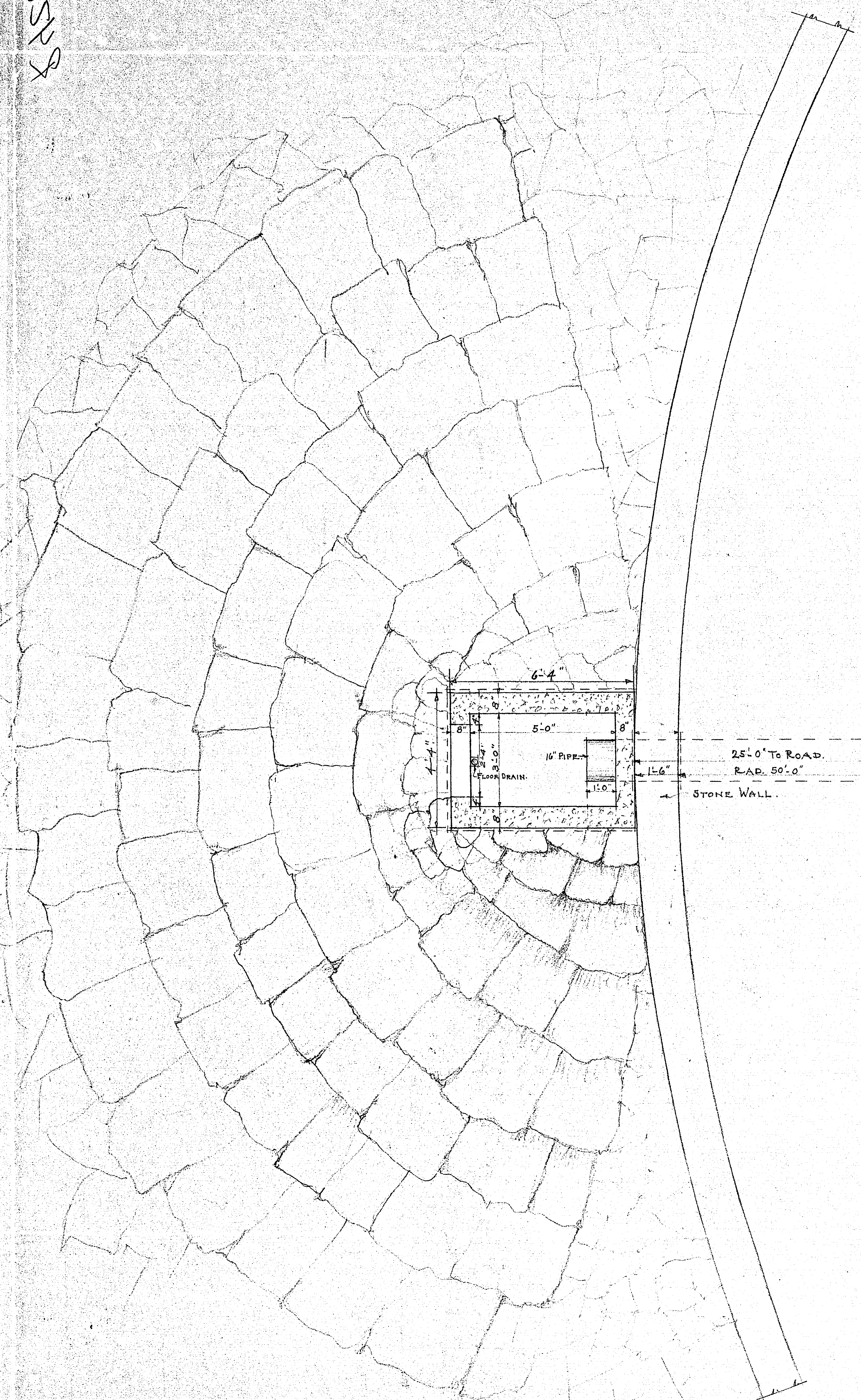


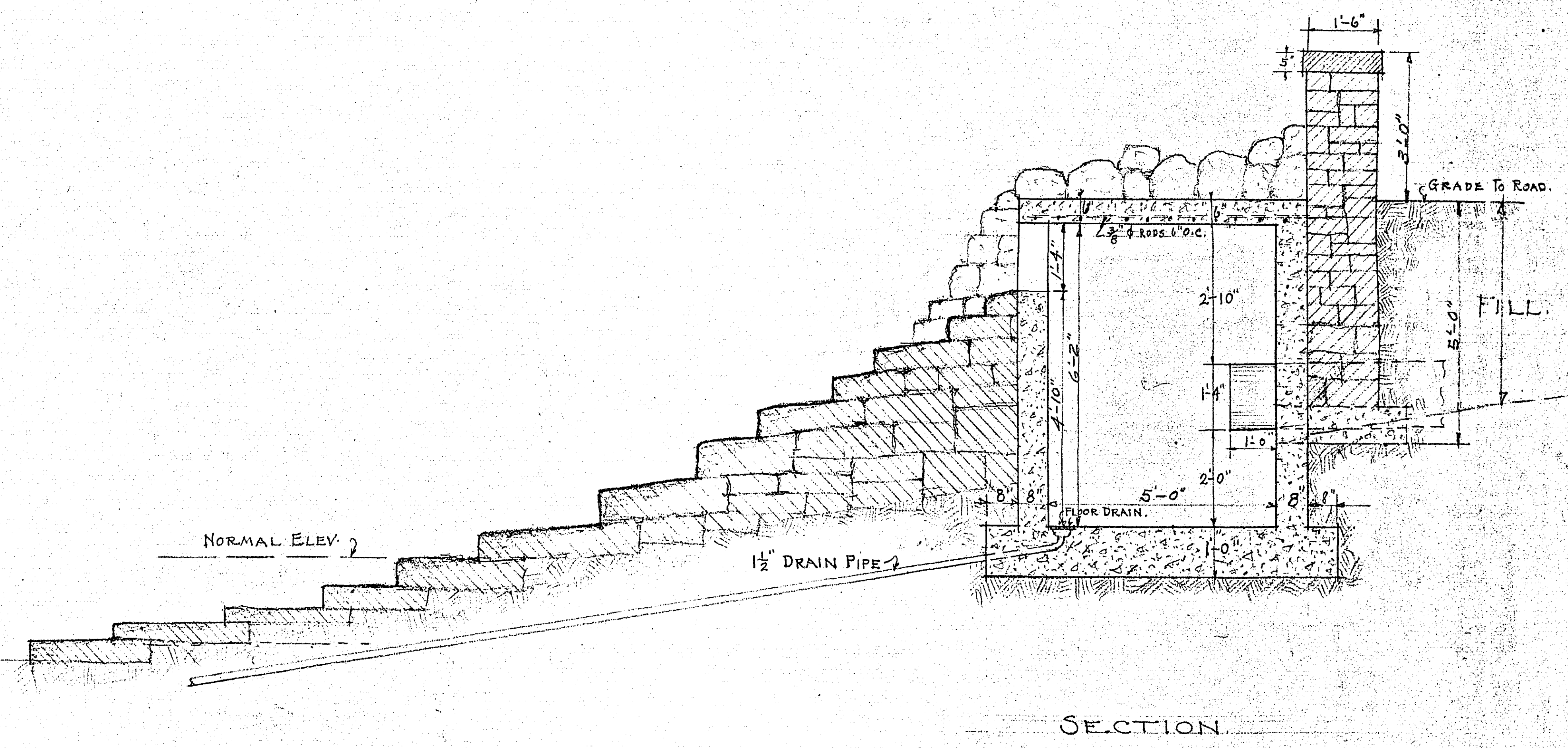
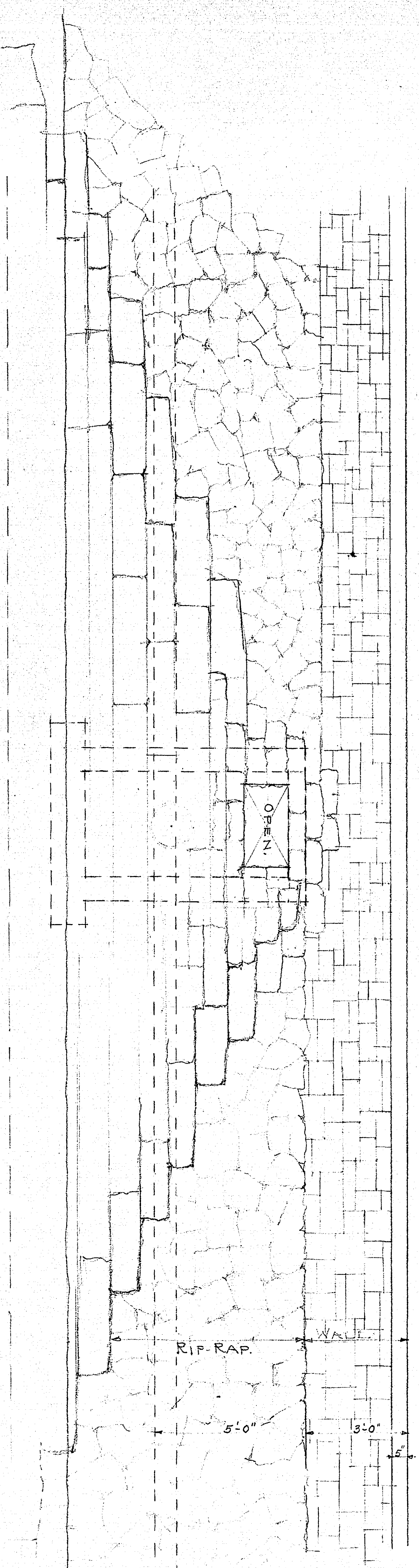
2578



PLAN OF CATCH BASIN
SCALE 1/2" = 1'-0"

MICROFILMED
RAMSEY CO. ENGR. 7.426

FRONT ELEVATION



MICROFILMED BY
RAMSEY CO. ENGR.

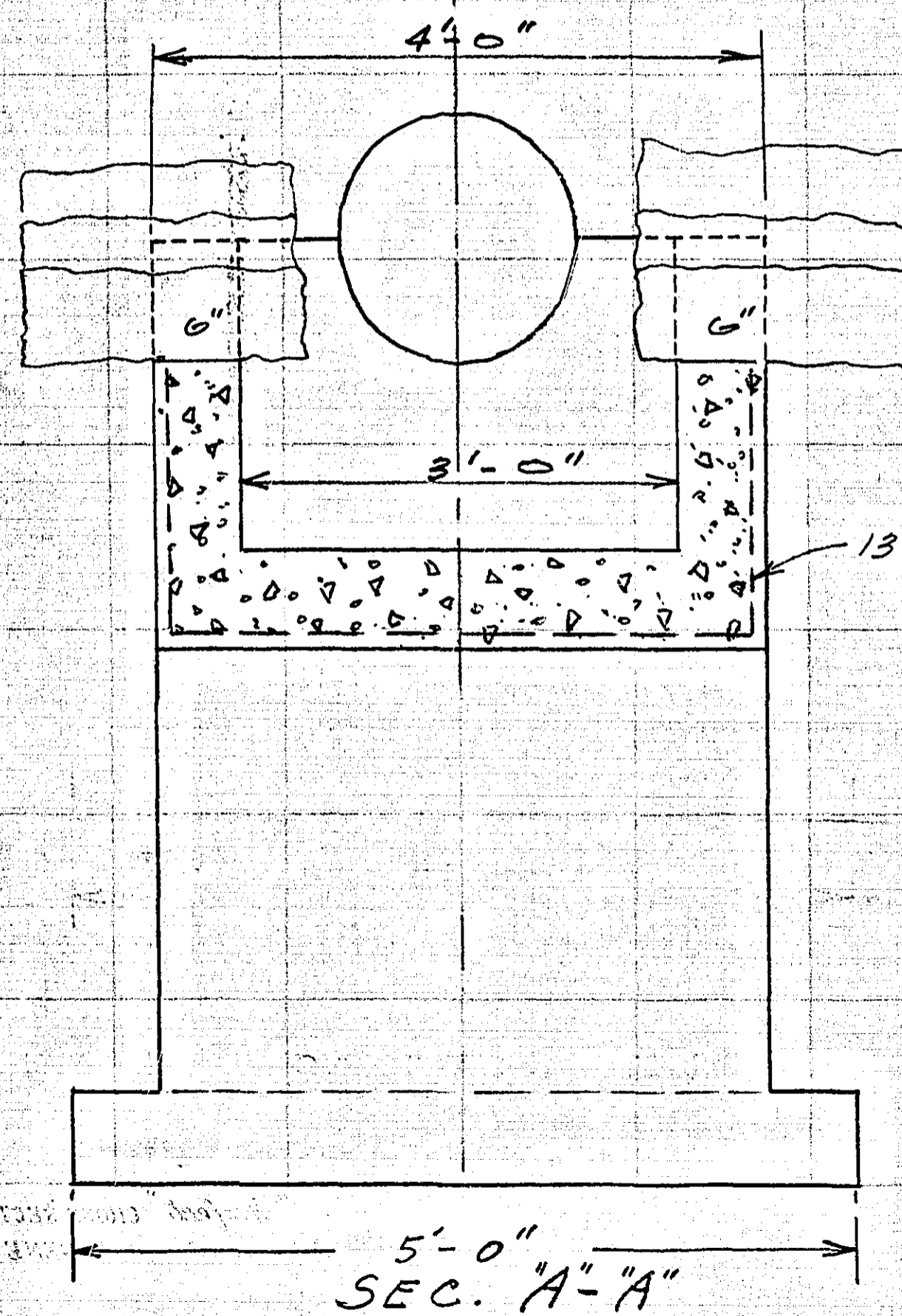
CATCH BASIN
LAKE OWASSO, WELL NO 14
RAMSEY COUNTY, MINN.
SEPT. 23, 1937.

REINF. STEEL
 26 PCS. $\frac{3}{8}$ " ϕ 6'-6" LG.
 14 " " ϕ 3'-9" " }
 7 " " ϕ 3'-3" " } 125 LBS.
 7 " " ϕ 4'-6" " }
 7 " " ϕ 2'-0" " }
 6 " " ϕ 4'-9" " }
 6 " " ϕ 2'-0" " }

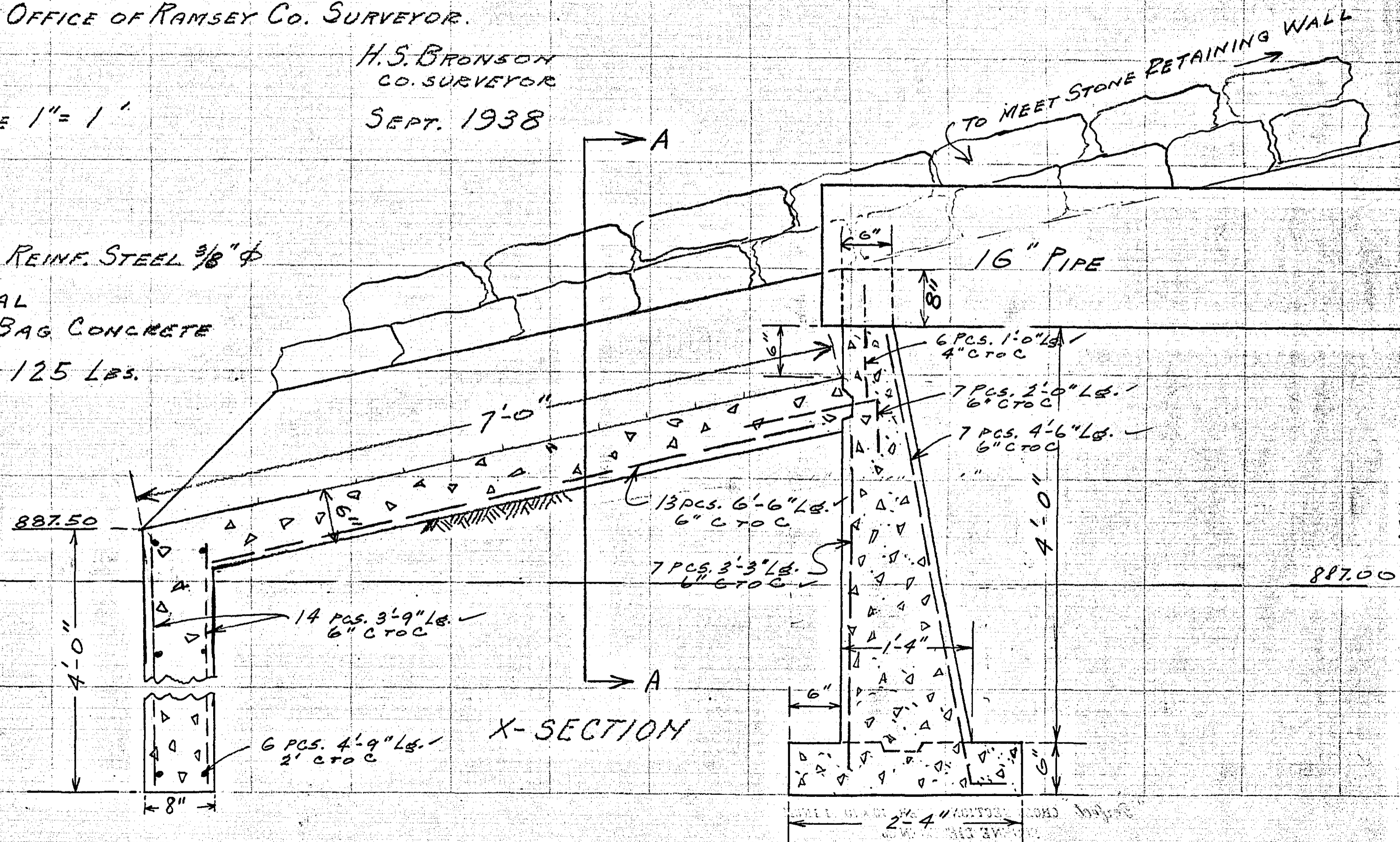
SKETCH OF PROPOSED SPILLWAY
 AT PUMP 14, LAKE OKASSO
 OFFICE OF RAMSEY CO. SURVEYOR.

H. S. BRONSON
 CO. SURVEYOR
 SEPT. 1938

SCALE 1" = 1'



NOTE: ALL REINF. STEEL $\frac{3}{8}$ " ϕ
 MATERIAL
 2.0 C.Y. 6 BAG CONCRETE
 332 L.F. $\frac{3}{8}$ " ϕ = 125 LBS.



H. S. BRONSON
 CO. ENGR.

RECORDED
 RAMSEY CO. ENGR.
 2420

5'-0"
 SEC. "A-A"

MADE IN U.S.A.