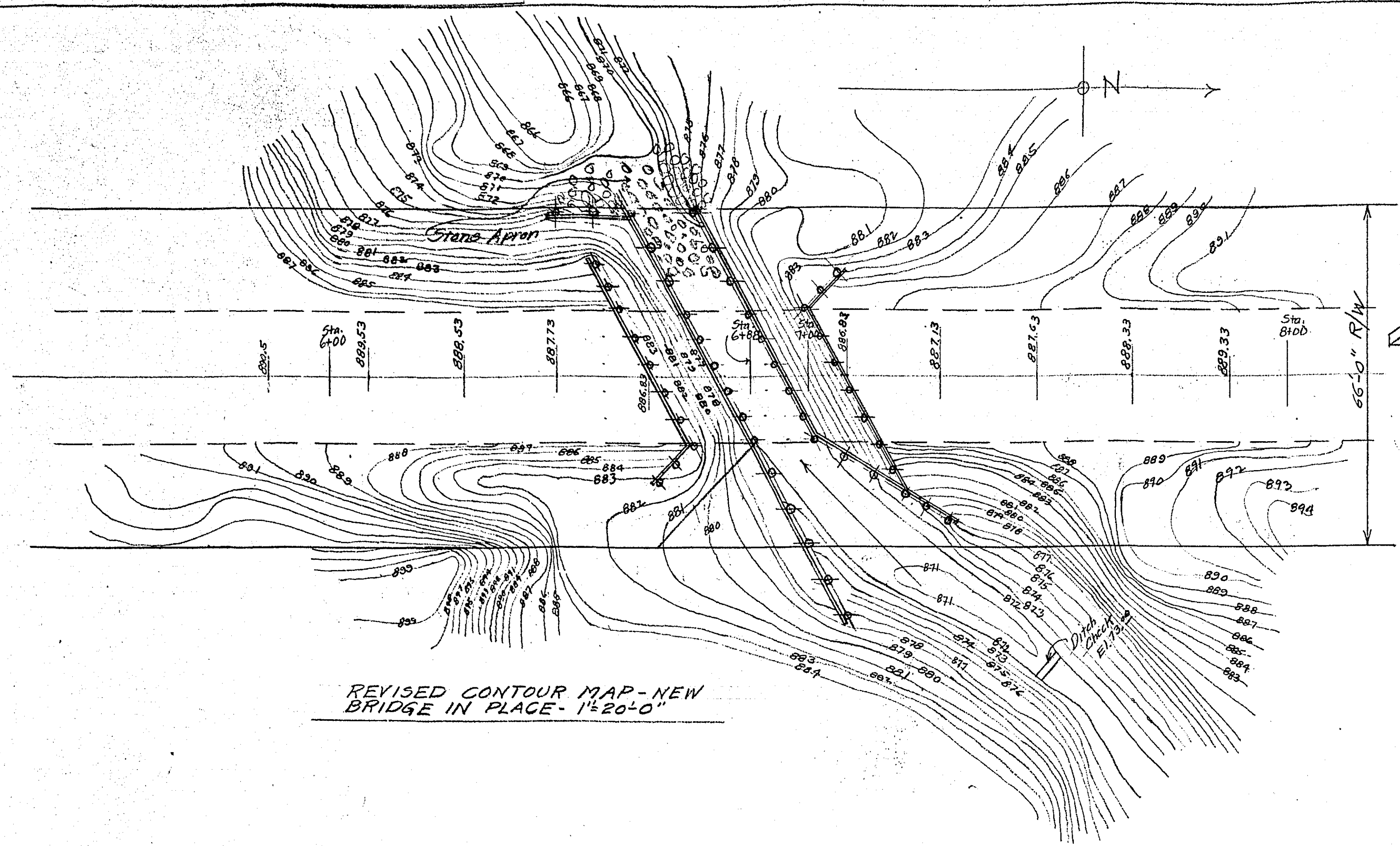
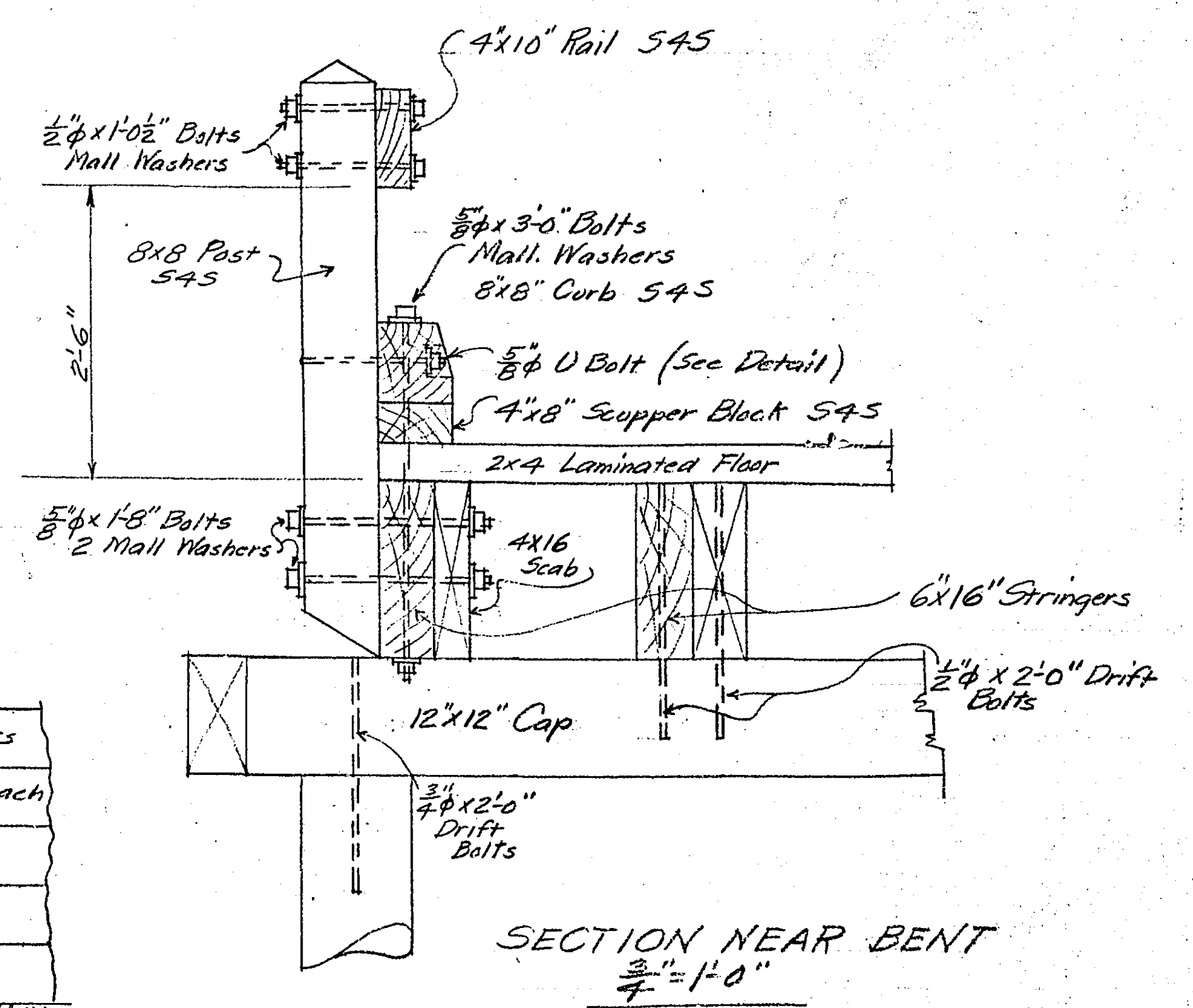
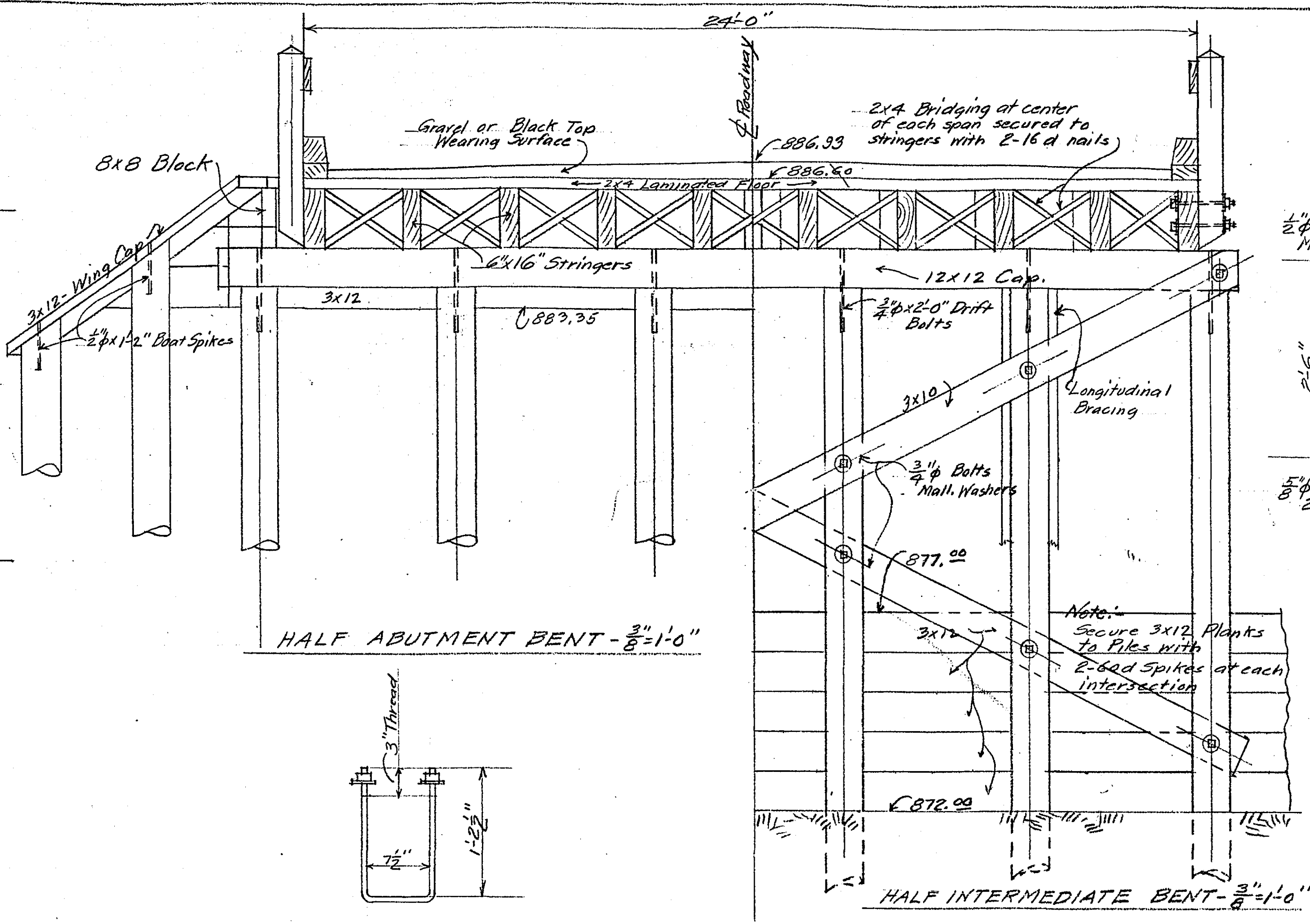


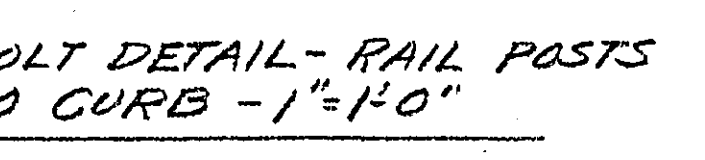
County will remove old pipe
 Black Top
 Ditch Checks
 Road Grading



REVISED CONTOUR MAP-NEW BRIDGE IN PLACE-1 1/2"=20'-0"

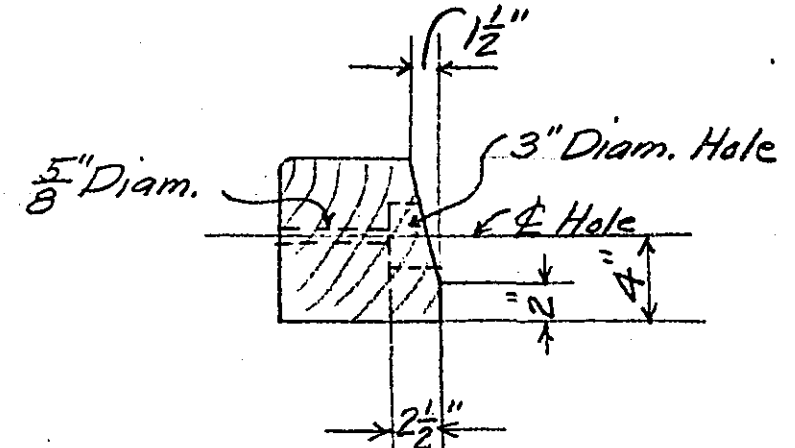


SECTION NEAR BENT 3/8"=1'-0"

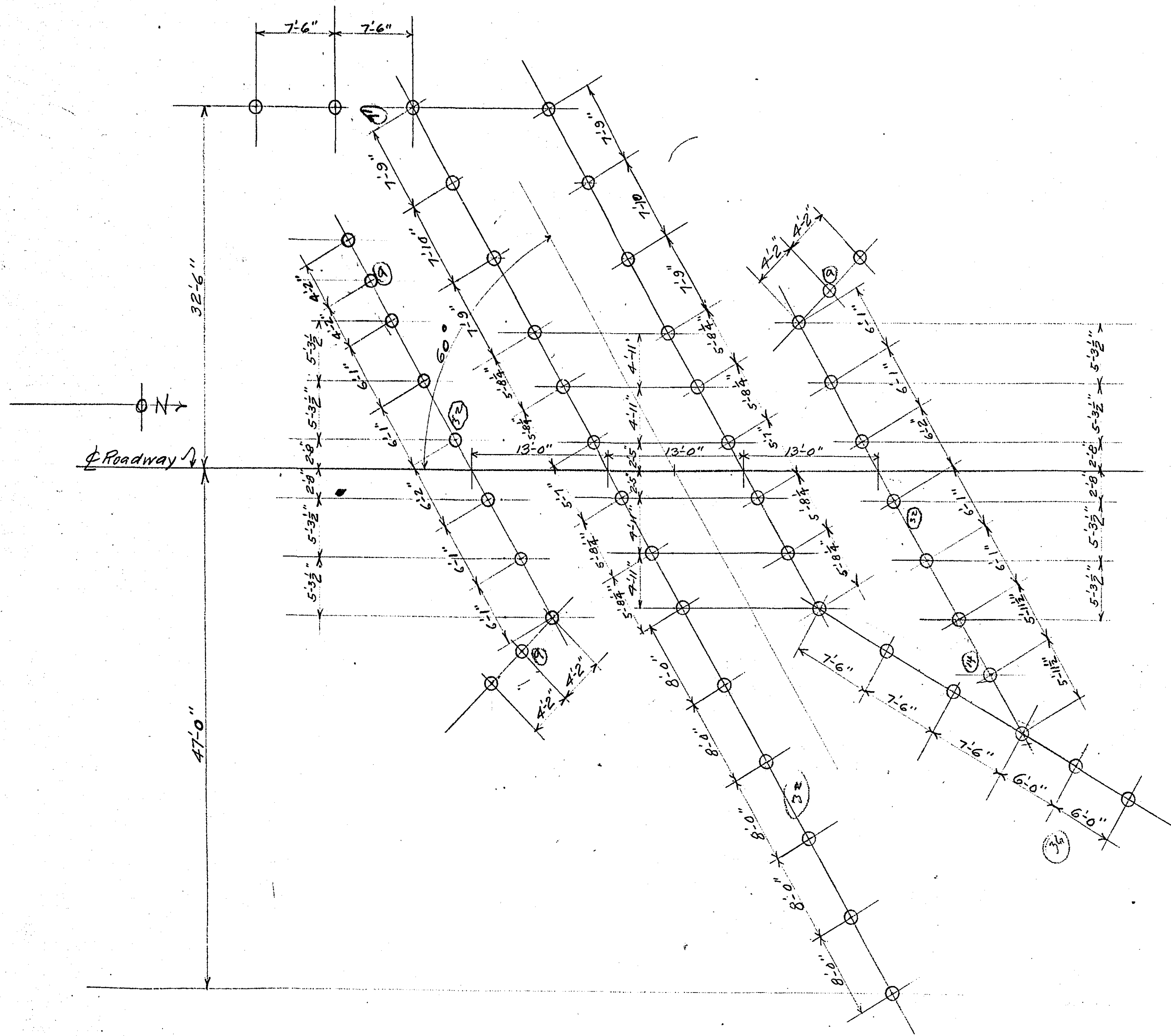


U BOLT DETAIL - RAIL POSTS TO CURB - 1 1/2"=4'-0"

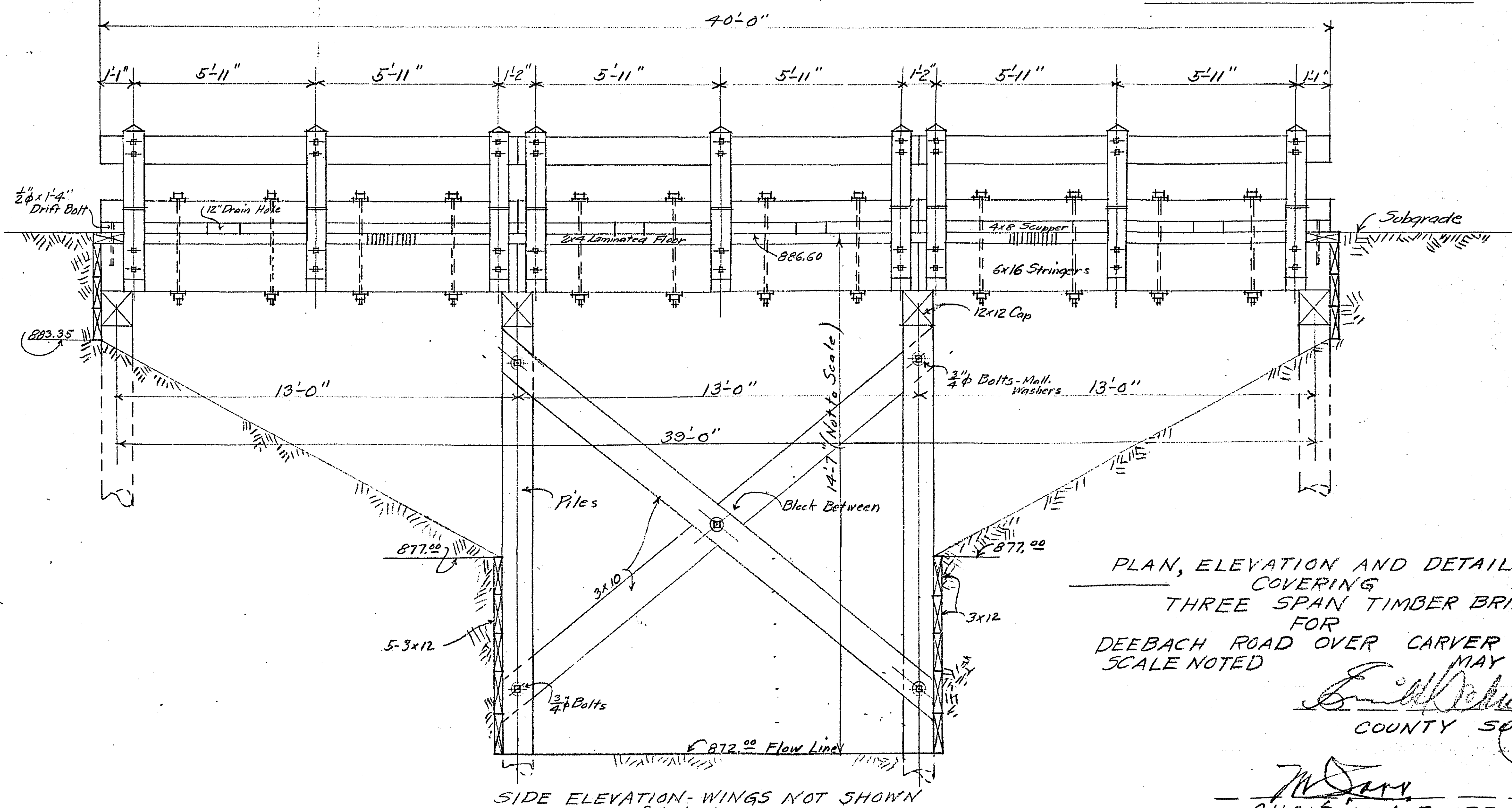
Nailing of Floor - Use 40d Galn Spikes 2'-0" o.c. in upper part of each piece, Spikes horizontal staggered 8" with those in adjacent strips. Nail each piece at bottom to alternate stringers, staggering from piece to piece using 16d nails.



8x8 CURB DETAIL - 1 1/2"=1'-0"



PILING PLAN - 1/8"=1'-0"



SIDE ELEVATION - WINGS NOT SHOWN 3/8"=1'-0"

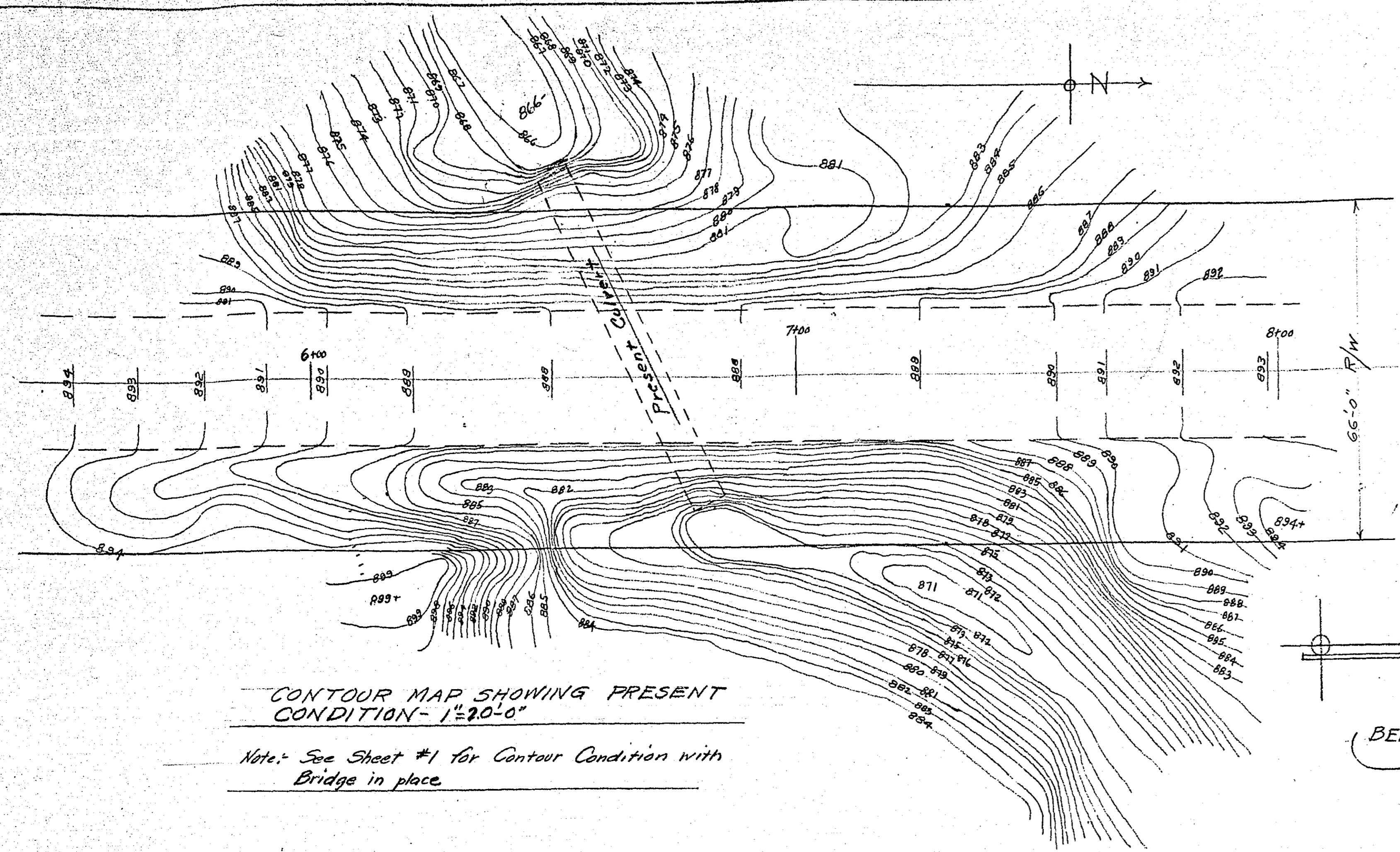
PLAN, ELEVATION AND DETAILS COVERING THREE SPAN TIMBER BRIDGE FOR DEEBACH ROAD OVER CARVER CREEK MAY 1937 SCALE NOTED

E. J. Deebach
 COUNTY SURVEYOR

W. J. Deebach
 CHAIRMAN, BOARD OF COUNTY COMMISSIONERS

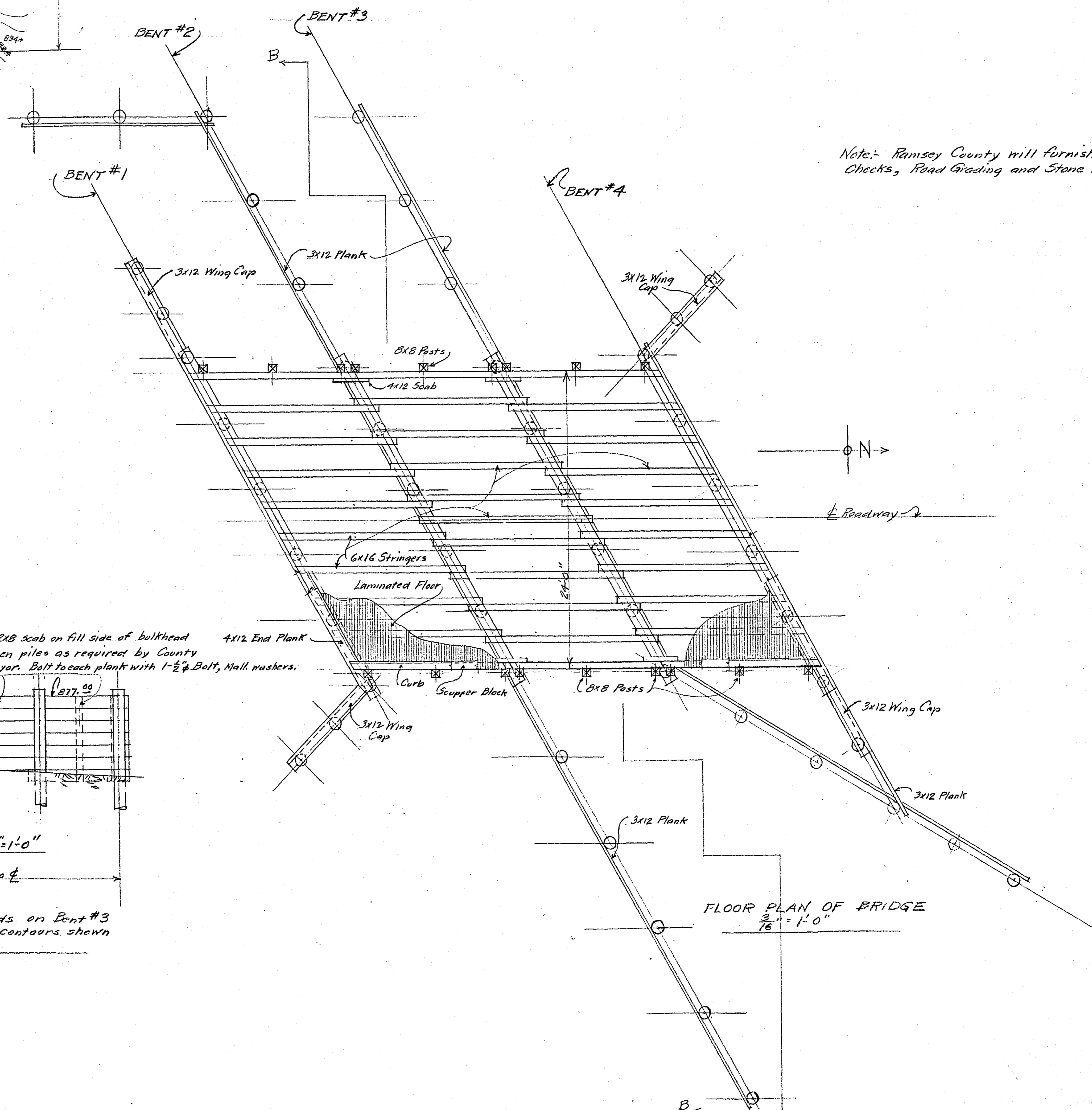
Lewis J. Deebach
 CHAIRMAN, NEW CANADA TOWNSHIP BOARD

R. 423

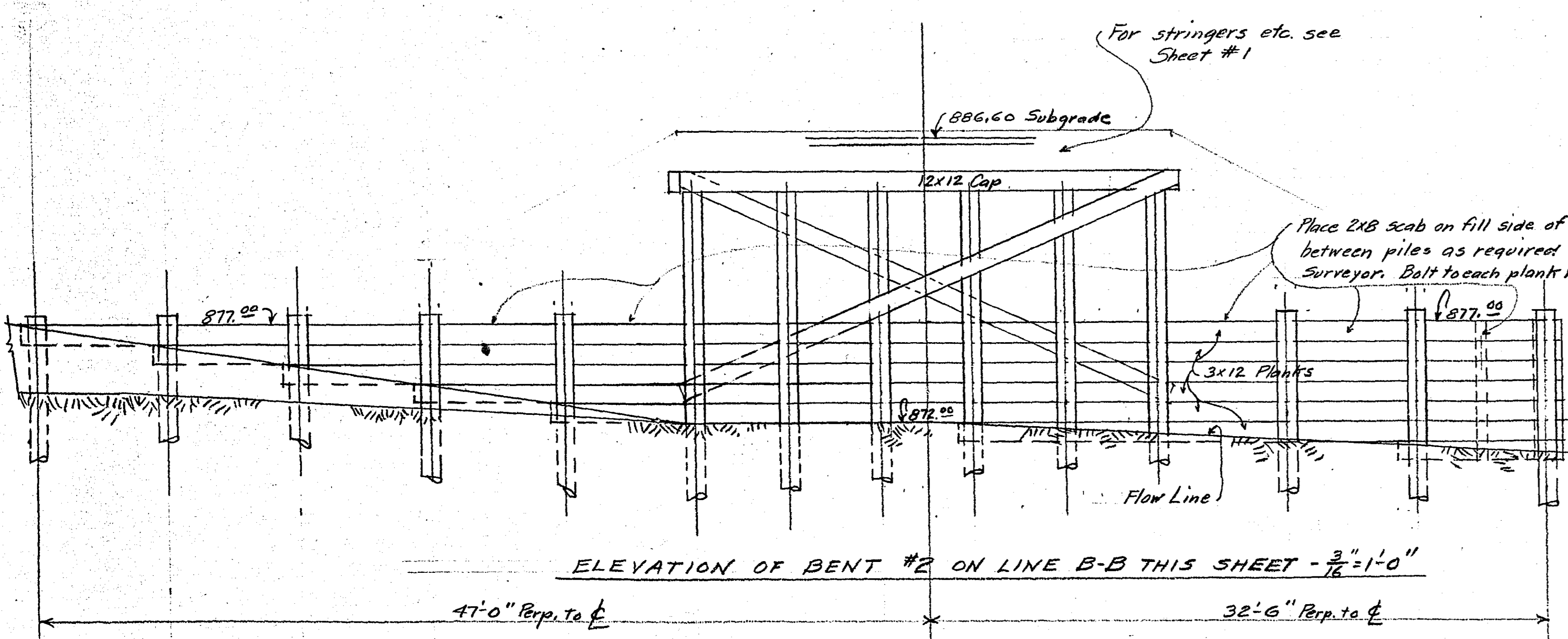


CONTOUR MAP SHOWING PRESENT CONDITION - 1"=20'-0"

Note: See Sheet #1 for Contour Condition with Bridge in place



Note: Ramsey County will furnish Black Top Surfacing, Ditch Checks, Road Grading and Stone Rip-Rap and Aprons.



ELEVATION OF BENT #2 ON LINE B-B THIS SHEET - 3/16"=1'-0"

47'-0" Perp. to C 32'-6" Perp. to C

Note: Timber Bulkheads on Bent #3 to be built similar to fit contours shown on Sheet #1.

For stringers etc. see Sheet #1

Place 2x8 scab on fill side of bulkhead between piles as required by County Surveyor. Bolt to each plank with 1-1/2" Bolt, Washers.

FLOOR PLAN OF BRIDGE 3/16"=1'-0"

R-423

R-423
MICROFILMED
RAMSEY CO. ENGR.