

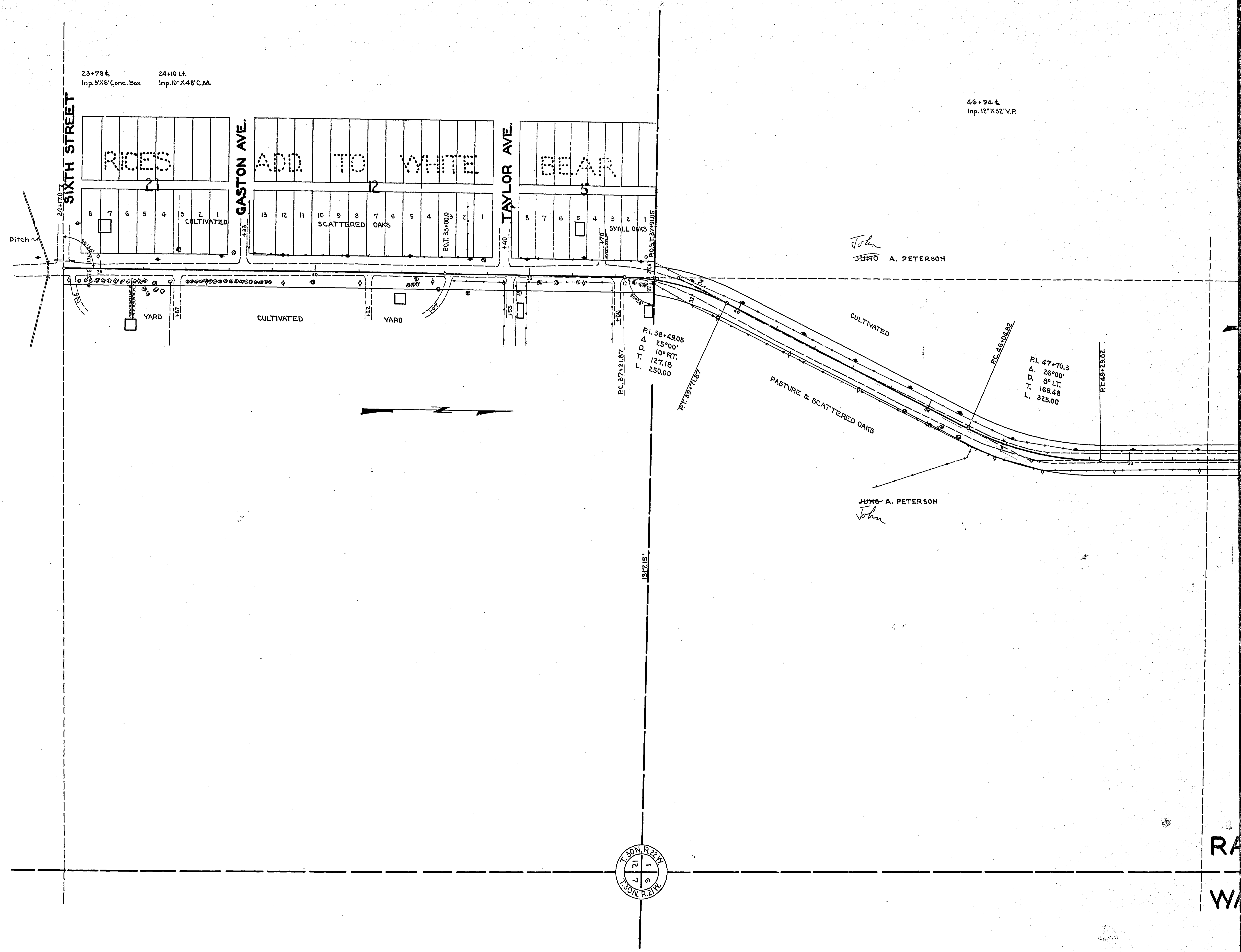
PORTLAND AVE.

15-451

OFFICE OF
 RAMSEY COUNTY SURVEYOR
 EMIL H. SCHULZ
 RIGHT OF WAY MAP
 OF
PORTLAND AVE.
 FROM 6TH ST. TO NO. CO. LINE
 MARCH 1937 SCALE 1"=100'

MICROFILMED
 RAMSEY CO. ENGR.

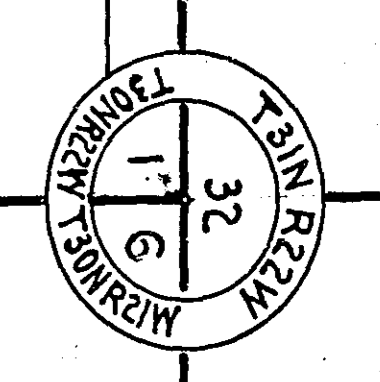
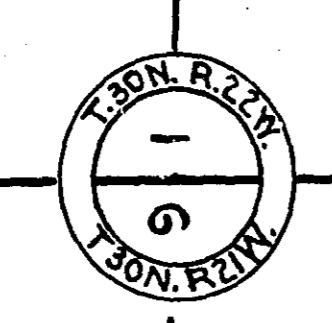
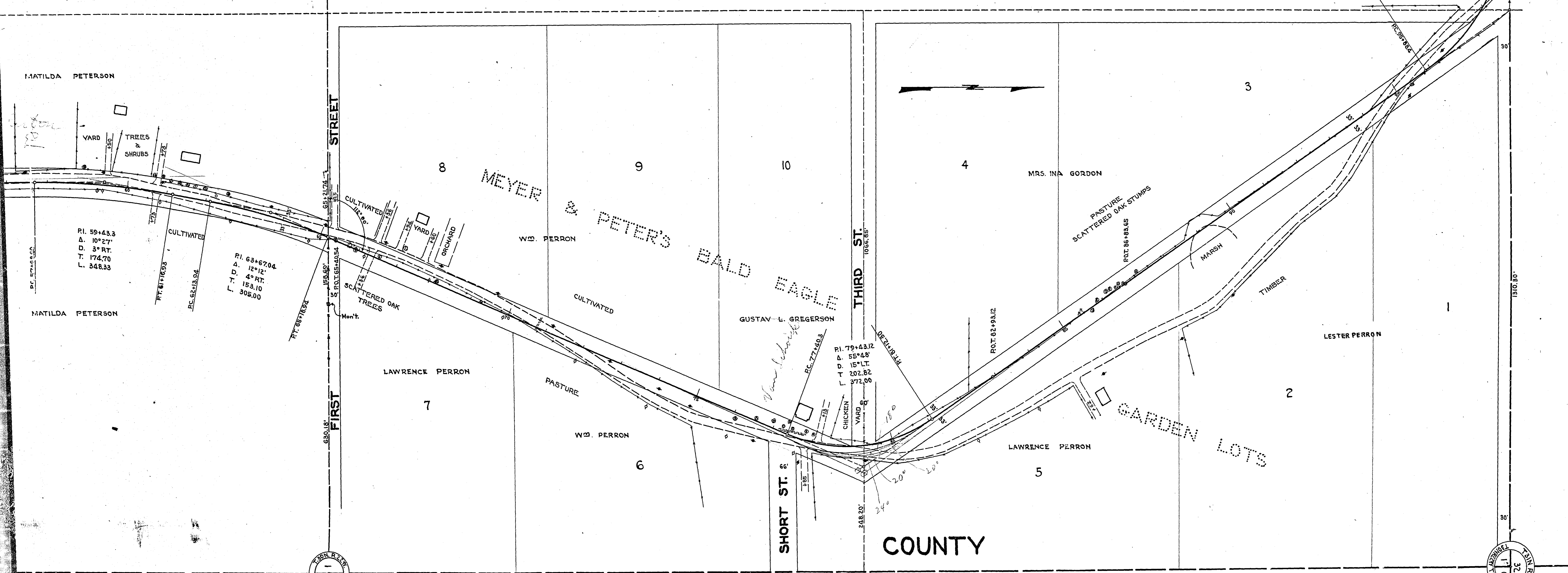
R-421



70+80 &
Inp. 12" X 30" C.M.

EQUATION = 46+16.75 NO. CO. LINE RD.
PT. 100+57.01 - PORTLAND AVE.

PI. 98+44.0
Δ. 56° 12'
D. 121.11
T. 255.60
L. 468.61



COUNTY
COUNTY

MICROFILMED
RAMSEY CO. ENGR.

R-421