

LARSON'S SECOND ADD.  
LOT A Ernest A. & Augusta Larson

CAMPBELL'S PARK  
LOT A John W. & Katherine H. Campbell

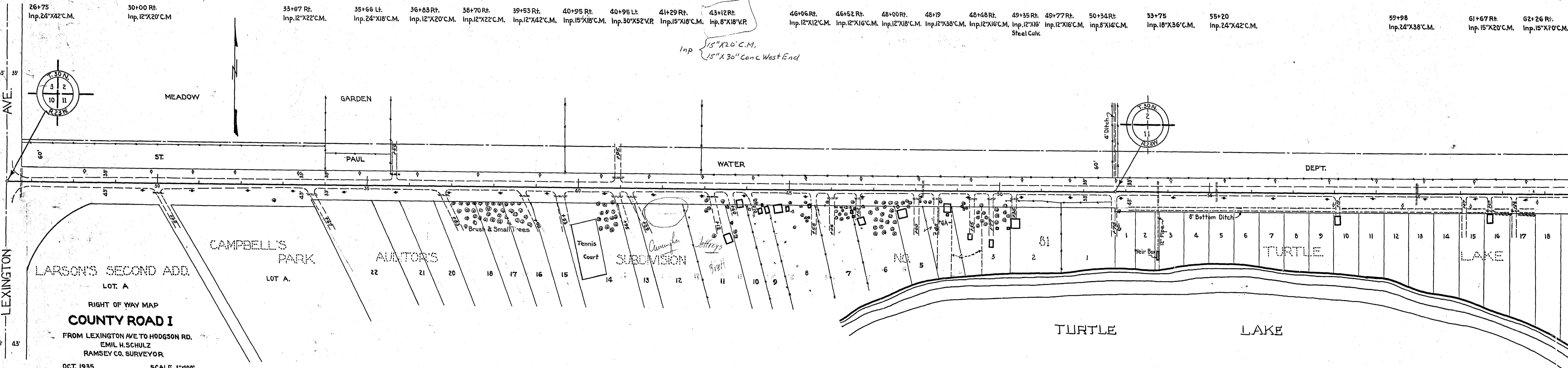
AUDITOR'S SUB. NO. 81

LOT 1 Josiah H. Chase	26+75 Inp. 24" X 42" C.M.	30+00 Rt. Inp. 12" X 20" C.M.	33+67 Rt. Inp. 12" X 22" C.M.	35+66 Lt.	36+83 Rt. Inp. 12" X 20" C.M.	38+70 Rt. Inp. 12" X 22" C.M.	39+53 Rt. Inp. 12" X 42" C.M.	40+95 Rt. Inp. 15" X 18" C.M.	40+95 Lt. Inp. 30" X 52" V.R.	41+29 Rt. Inp. 15" X 18" C.M.	43+12 Rt. Inp. 8" X 18" V.R.	46+06 Rt. Inp. 12" X 12" C.M.	46+52 Rt. Inp. 12" X 16" C.M.	48+00 Rt. Inp. 12" X 18" C.M.	48+19	48+48 Rt. Inp. 12" X 16" C.M.	49+35 Rt. Inp. 12" X 16" C.M.	49+77 Rt. Inp. 12" X 16" C.M.	50+34 Rt. Inp. 8" X 14" C.M.	53+75 Inp. 18" X 36" C.M.	55+20 Inp. 24" X 42" C.M.	59+98 Inp. 24" X 38" C.M.	61+67 Rt. Inp. 15" X 20" C.M.	62+26 Rt. Inp. 15" X 20" C.M.
-----------------------	------------------------------	----------------------------------	----------------------------------	-----------	----------------------------------	----------------------------------	----------------------------------	----------------------------------	----------------------------------	----------------------------------	---------------------------------	----------------------------------	----------------------------------	----------------------------------	-------	----------------------------------	----------------------------------	----------------------------------	---------------------------------	------------------------------	------------------------------	------------------------------	----------------------------------	----------------------------------

Inp. 15" X 20" C.M.  
15" X 30" Conc. West End

- 2 Ida M. Rogers
- 3 Carl M. Magnuson
- 4 Dora M. Decker
- 5 Henry Bloomquist & L. Anderson
- 6 Joseph Wolkerstorfer
- 7 R.H. Deppé
- 8 Elizabeth E. Sturmer
- 9 Clara M. Spaeth
- 10 Leo A. & Mary D. Ritt
- 11 Peris A. Brett
- 12 Austin S. Cunningham
- 13 Raymond J. Russell
- 14 John J. & Mary L. Thoesen
- 15 Roy E. Swanstrom
- 16 Roy E. & Melvina M. Swanstrom
- 17 Elizabeth M. Swanson
- 18 Henry E. Zutz
- 20 George H. Ellis
- 21 Frederick L. Beckley
- 22 Chas. H. & Elizabeth M. Young

- TURTLE LAKE SHORES**
- 1 Aaron & Minnie Carlson
  - 2 " " " "
  - 3 " " " "
  - 4 " " " "
  - 5 " " " "
  - 6 " " " "
  - 7 " " " "
  - 8 " " " "
  - 9 Francis M. Gehan & Martha Matz
  - 10 Aaron & Minnie Carlson
  - 11 " " " "
  - 12 " " " "
  - 13 Joel R. & Lola M. McCarty
  - 14 " " " "
  - 15 Patrick W. & Mary D. Hanson
  - 16 Thomas H. & Rita I. Magee
  - 17 Aaron & Minnie Carlson
  - 18 " " " "
  - 19 " " " "
  - 20 Alfreda J. Johnson
  - 21 Guy A. & Edvina M. Ashton
  - 22 Harry E. & Hazel A. Kranhold
  - 23 Aaron & Minnie Carlson



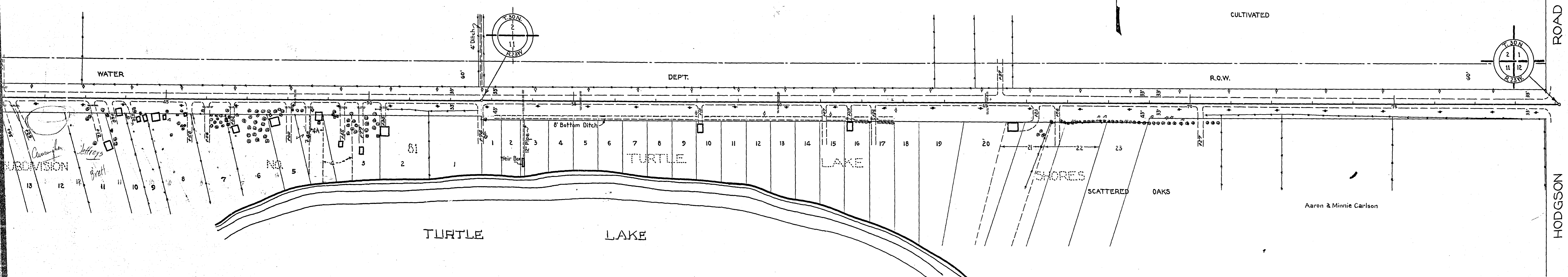
RIGHT OF WAY MAP  
**COUNTY ROAD I**  
 FROM LEXINGTON AVE TO HODGSON RD.  
 EMIL H. SCHULZ  
 RAMSEY CO. SURVEYOR  
 OCT. 1935 SCALE 1"=100'

MICROFILMED  
 RAMSEY CO. ENGR. R-389

0+95 Lt. 41+29 Rt. 43+12 Rt. 46+06 Rt. 46+52 Rt. 48+00 Rt. 48+19 48+48 Rt. 49+35 Rt. 49+77 Rt. 50+34 Rt. 53+75 55+20 59+98 61+67 Rt. 62+26 Rt. 65+05  
 Inp. 30" X 52" V.R. Inp. 15" X 18" C.M. Inp. 8" X 18" V.R. Inp. 12" X 12" C.M. Inp. 12" X 16" C.M. Inp. 12" X 18" C.M. Inp. 12" X 38" C.M. Inp. 12" X 16" C.M. Inp. 12" X 16" C.M. Inp. 12" X 16" C.M. Inp. 8" X 14" C.M. Steel Culv. Inp. 18" X 36" C.M. Inp. 24" X 42" C.M. Inp. 24" X 38" C.M. Inp. 15" X 20" C.M. Inp. 15" X 20" C.M. Inp. 24" X 40" C.M.

Inp. 15" X 20" C.M.  
 15" X 30" Conc. West End

7 Rt  
 10 X 20



Cunningham  
 Lettrays  
 Brett  
 SUBDIVISION

MICROFILMED  
 RAMSEY CO. ENGR.  
 R-389