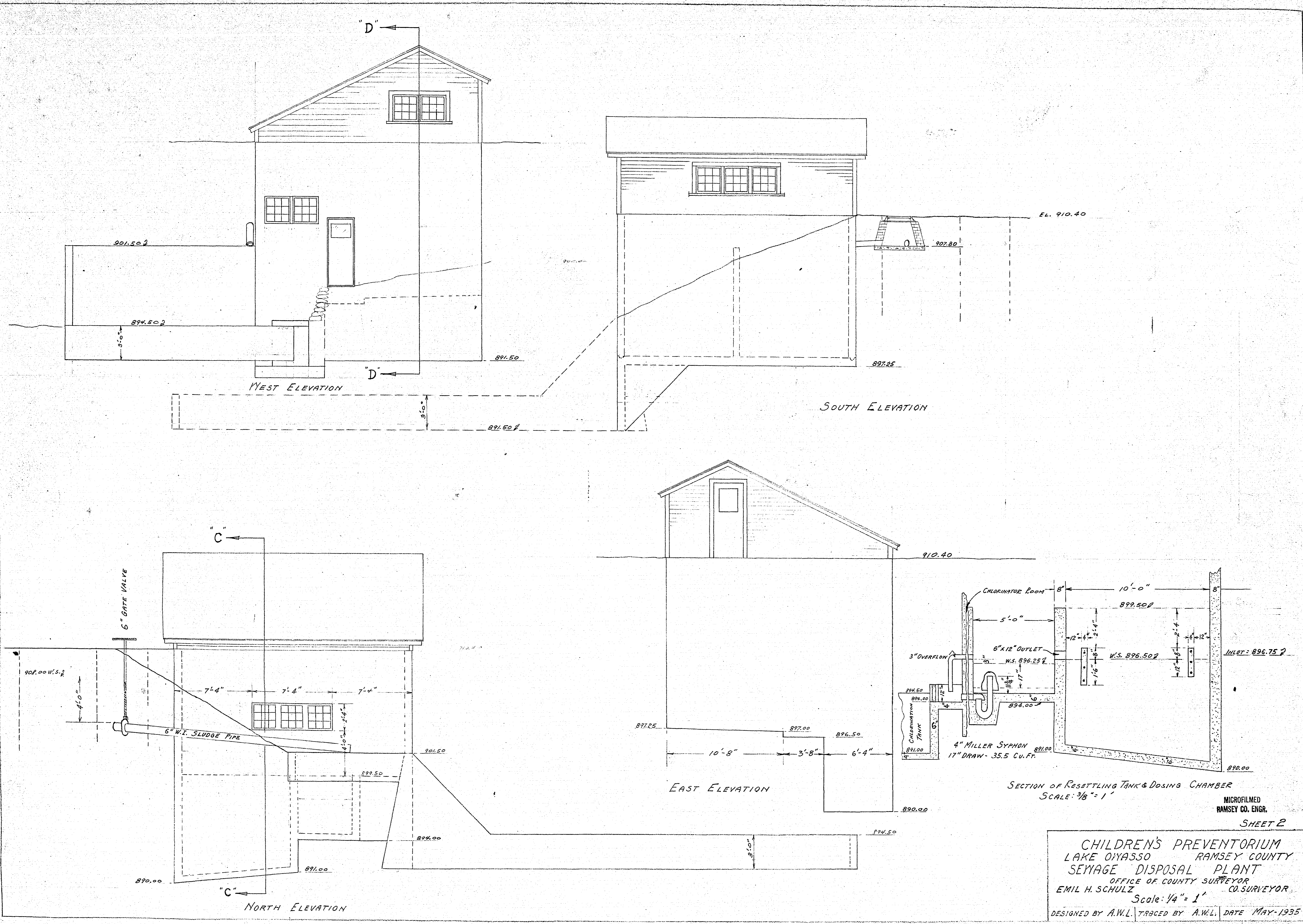


MICROFILMED  
RAMSEY CO. ENGR. SHEET 1

CHILDREN'S PREVENTORIUM  
LAKE OWASSO RAMSEY COUNTY  
SEWAGE DISPOSAL PLANT  
OFFICE OF COUNTY SURVEYOR  
EMIL H. SCHULZ CO. SURVEYOR  
Scale: 3/8" = 1'

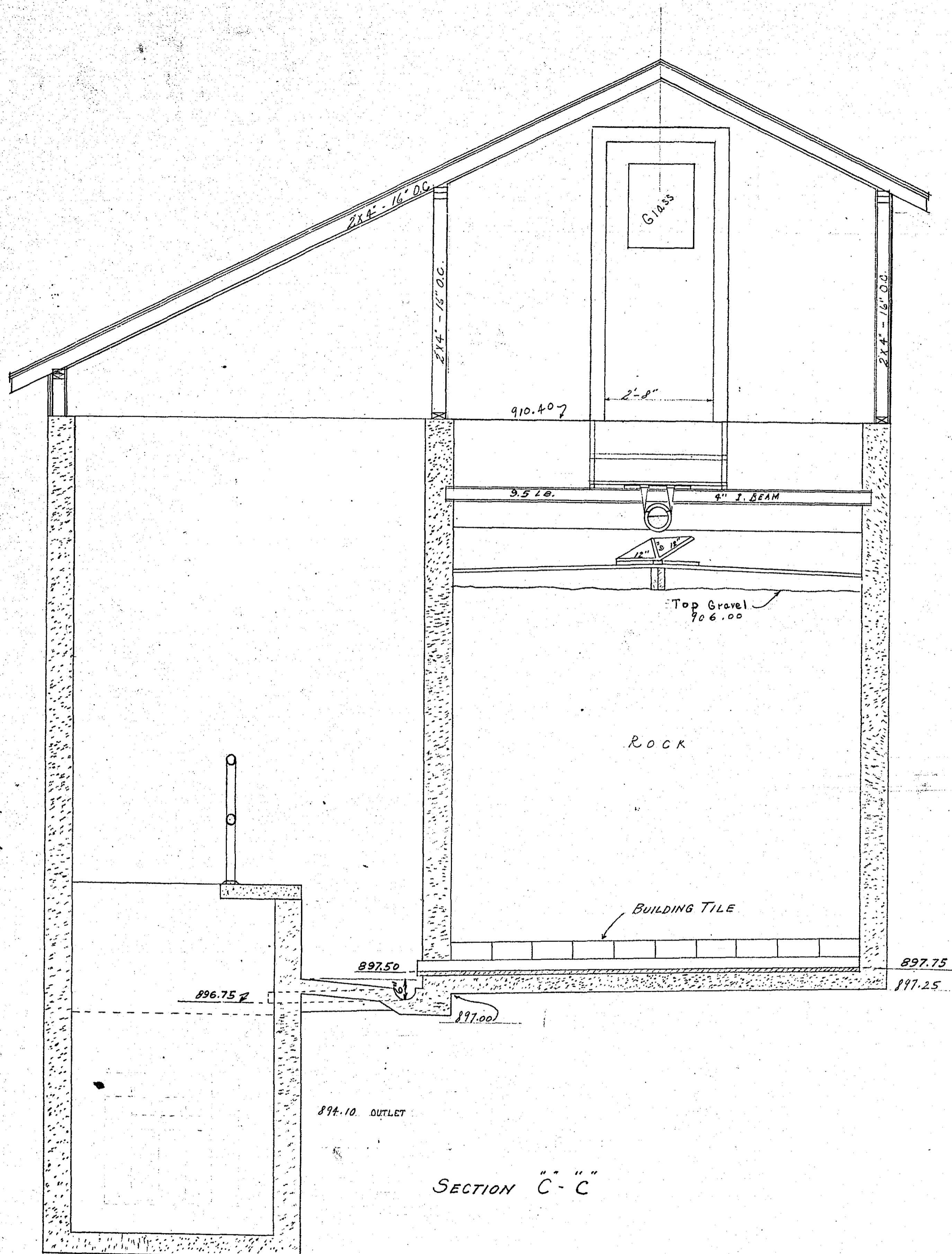
DEL. - A.W.C. APPROVED - A.W.L. DATE MAY - 1935



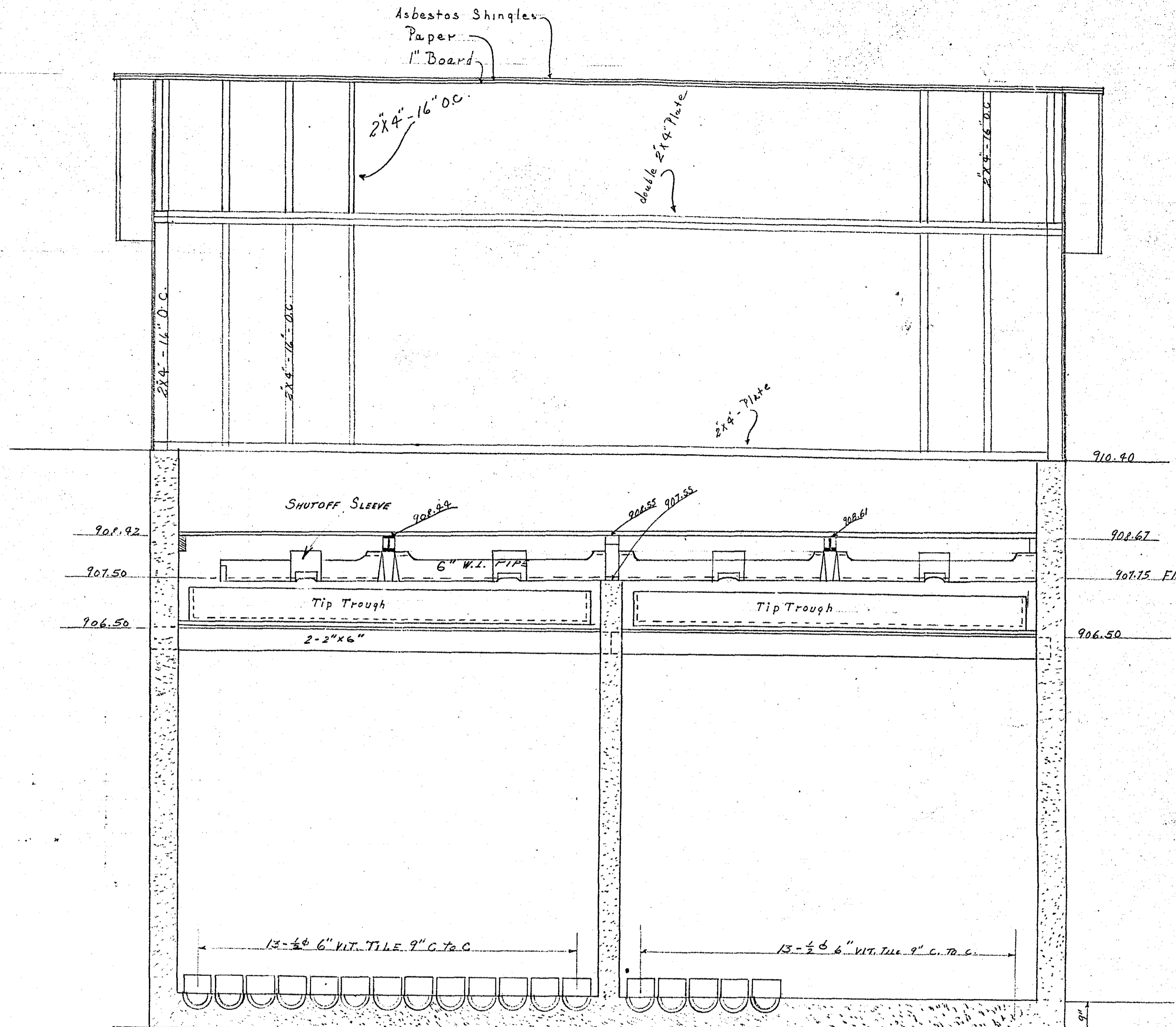
MICROFILMED  
RAMSEY CO. ENGR.

SHEET 2

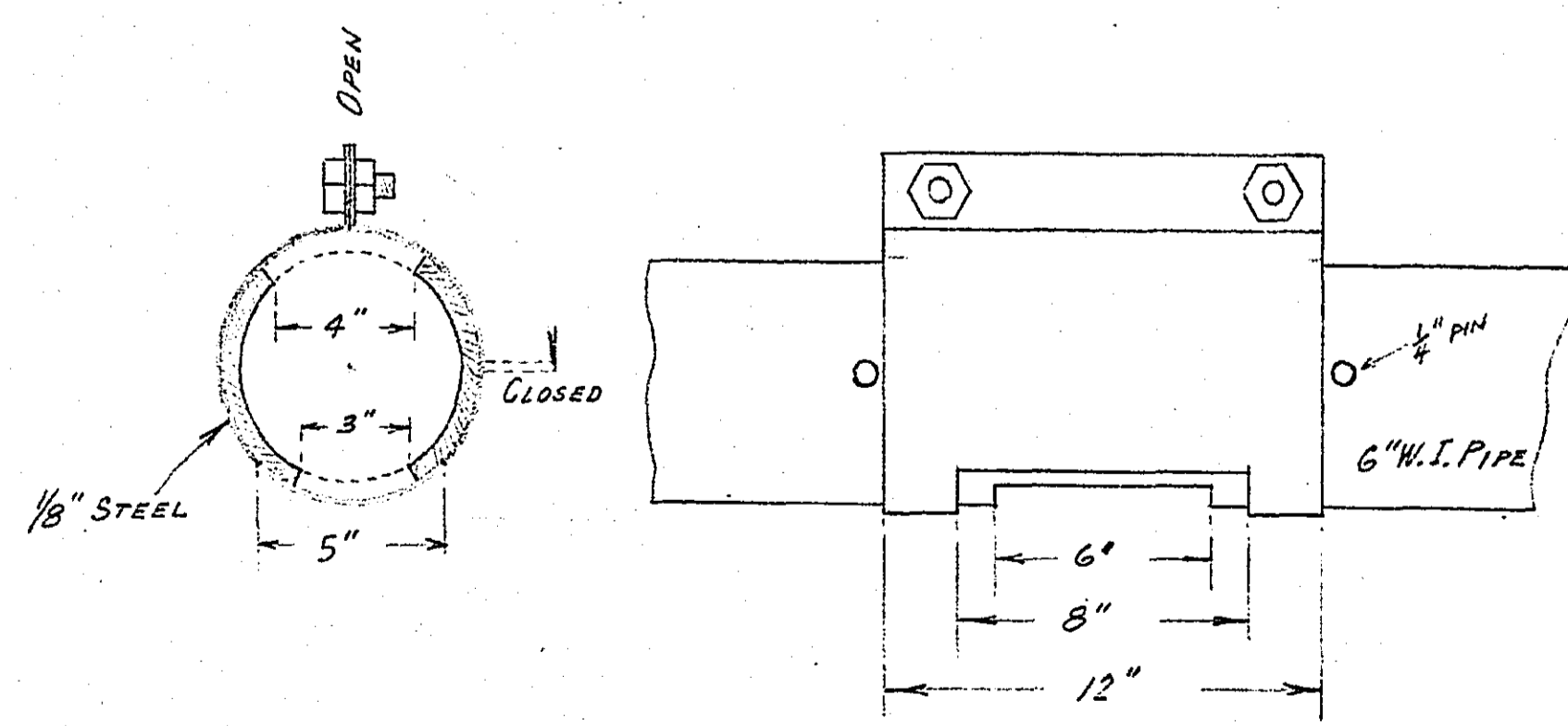
CHILDREN'S PREVENTORIUM  
LAKE OYASSO RAMSEY COUNTY  
SEWAGE DISPOSAL PLANT  
OFFICE OF COUNTY SURVEYOR  
EMIL H. SCHULZ CO. SURVEYOR  
Scale: 1/4" = 1'  
DESIGNED BY A.W.L. TRACED BY A.W.L. DATE MAY-1935



SECTION C-C



SECTION D-D



DETAIL OF SHUTOFF SLEEVE

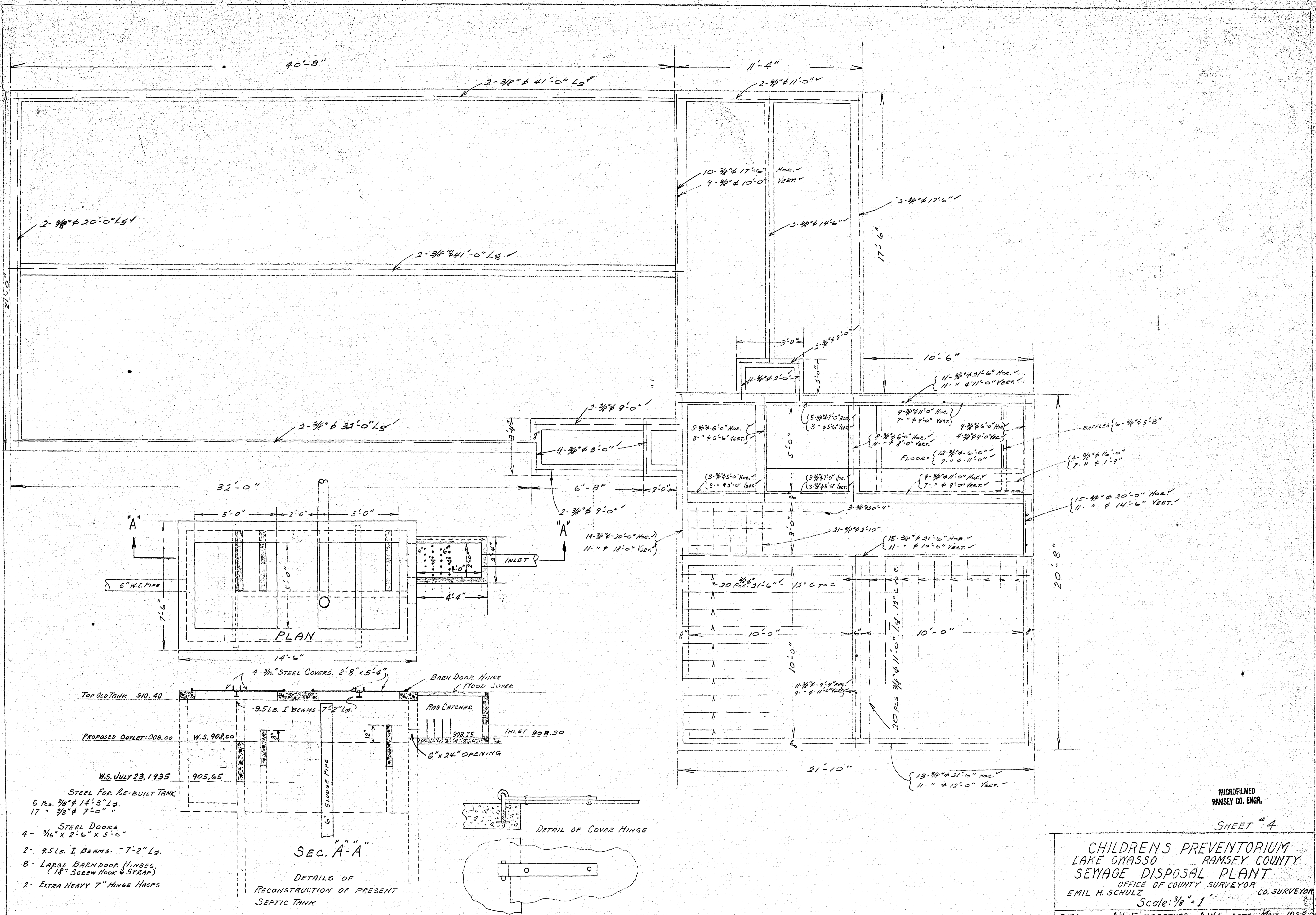
Scale: 2" = 1'

MICROFILMED  
RAMSEY CO. ENGR.

SHEET 3

CHILDREN'S PREVENTORIUM  
LAKE OWASSO RAMSEY COUNTY  
SEWAGE DISPOSAL PLANT  
OFFICE OF COUNTY SURVEYOR  
EMIL H. SCHULZ CO. SURVEYOR  
Scale: 1/2" = 1'  
DESIGNED BY A.M.L. TRACED BY DATE MAY-1935

333



- W.S. JULY 23, 1935
- STEEL FOR RE-BUILT TANK
    - 6 Pcs. 3/8" x 14'-3" Lg.
    - 17 " 3/8" x 7'-0" "
  - STEEL DOORS
    - 4 - 3/16" x 2'-6" x 5'-0" "
  - 2 - 9.5 Lb. I BEAMS - 7'-2" Lg.
  - 8 - LARGE BARN DOOR HINGES (18" SCREW HOOK & STEAP)
  - 2 - EXTRA HEAVY 7" HINGE HASPS

SEC. A-A  
 DETAILS OF RECONSTRUCTION OF PRESENT SEPTIC TANK

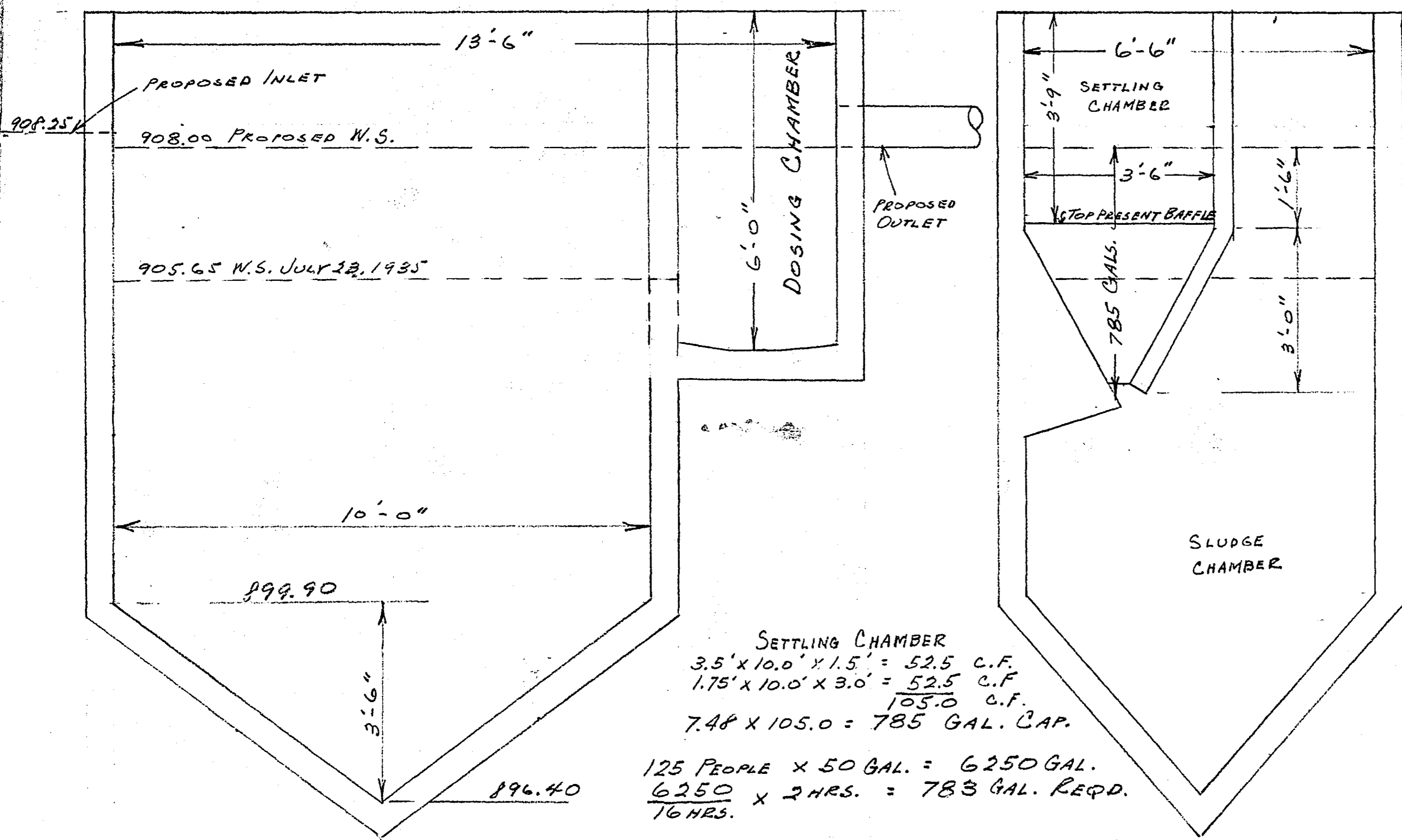
MICROFILMED  
 RAMSEY CO. ENGR.

SHEET # 4

CHILDREN'S PREVENTORIUM  
 LAKE OWASSO RAMSEY COUNTY  
 SEWAGE DISPOSAL PLANT  
 OFFICE OF COUNTY SURVEYOR  
 EMIL H. SCHULZ CO. SURVEYOR

Scale: 3/8" = 1'

DEL. A.W.L. APPROVED - A.W.L. DATE MAY-1935



SETTLING CHAMBER  
 $3.5' \times 10.0' \times 1.5' = 52.5 \text{ C.F.}$   
 $1.75' \times 10.0' \times 3.0' = 52.5 \text{ C.F.}$   
 $\underline{105.0 \text{ C.F.}}$   
 $7.48 \times 105.0 = 785 \text{ GAL. CAP.}$

$125 \text{ PEOPLE} \times 50 \text{ GAL.} = 6250 \text{ GAL.}$   
 $\frac{6250}{16 \text{ HRS.}} \times 2 \text{ HRS.} = 783 \text{ GAL. REQD.}$

SECTIONS OF PRESENT IMHOFF TANK  
 CHILDRENS PREVENTORIUM - L. ONASSO  
 SCALE:  $\frac{1}{2}'' = 1'$  OFFICE OF RAMSEY CO. SURVEYOR