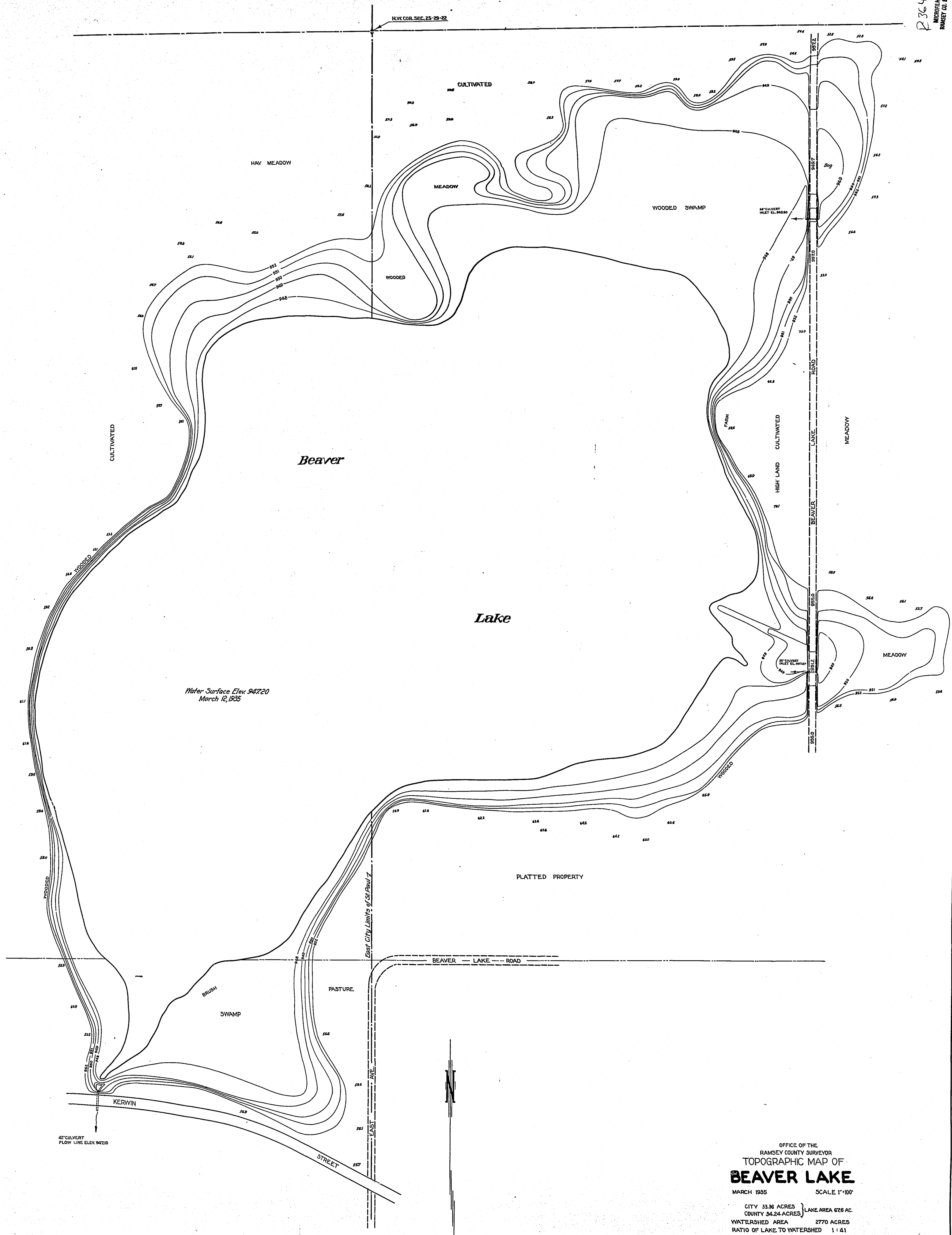


R364
MICROFILMED
RAMSEY CO. ENGR.

N.W. COR. SEC. 25-29-32



Water Surface Elev. 947.20
March 12, 1935

OFFICE OF THE
RAMSEY COUNTY SURVEYOR
TOPOGRAPHIC MAP OF
BEAVER LAKE
MARCH 1935 SCALE 1"=100'

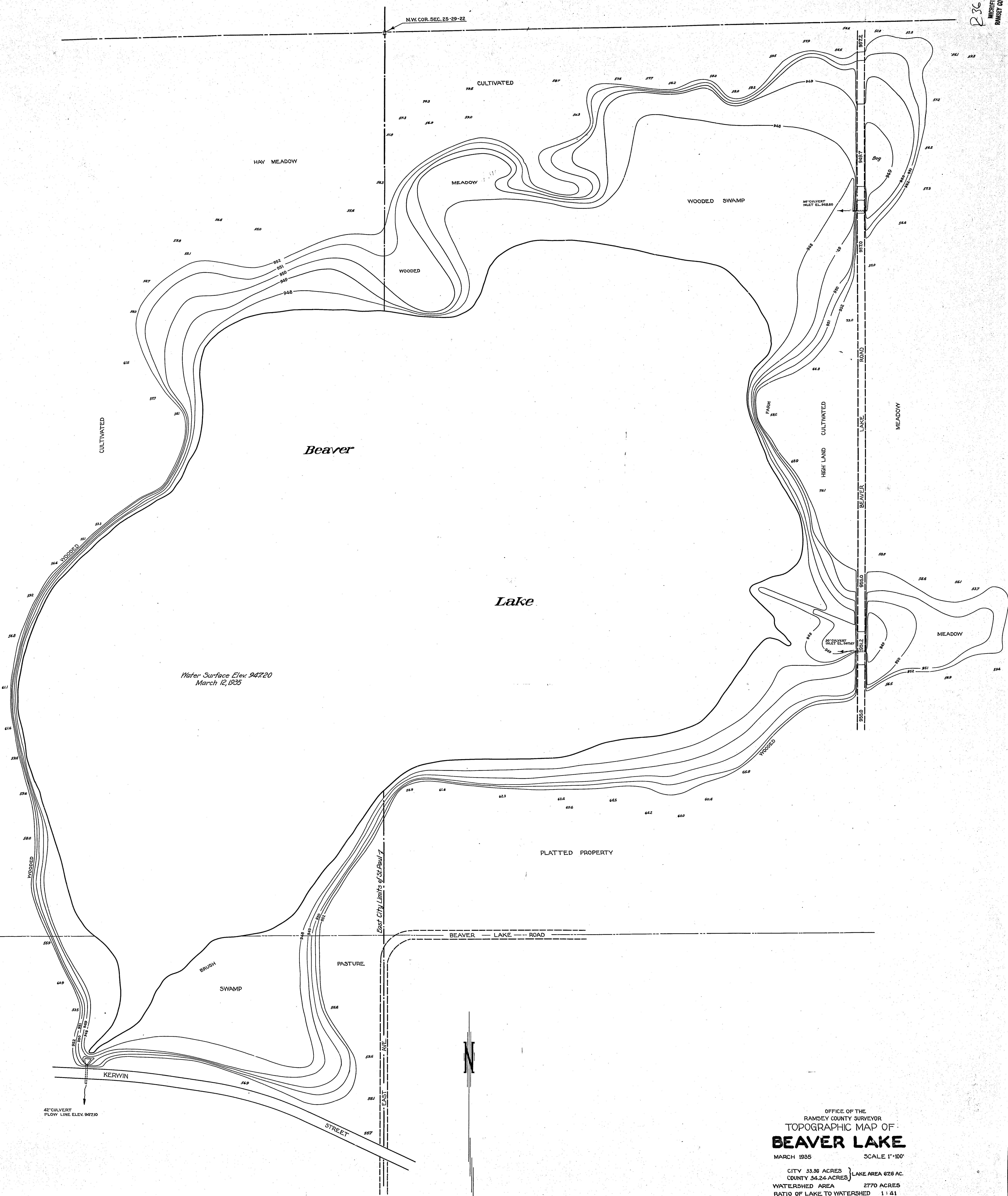
CITY 33.36 ACRES } LAKE AREA 676 AC.
COUNTY 34.24 ACRES }
WATERSHED AREA 2770 ACRES
RATIO OF LAKE TO WATERSHED 1 : 41

EMIL H. SCHULZ
COUNTY SURVEYOR

MICROFILMED
RAMSEY CO. ENGR.
R364

R364
MICROFILMED
RAMSEY CO. ENGR.

N.W. COR. SEC. 25-29-22



OFFICE OF THE
RAMSEY COUNTY SURVEYOR
TOPOGRAPHIC MAP OF
BEAVER LAKE
MARCH 1935 SCALE 1"=100'
CITY 33.36 ACRES } LAKE AREA 676 AC.
COUNTY 34.24 ACRES }
WATERSHED AREA 2770 ACRES
RATIO OF LAKE TO WATERSHED 1:41
EMIL H. SCHULZ
COUNTY SURVEYOR

MICROFILMED
RAMSEY CO. ENGR.
R364