

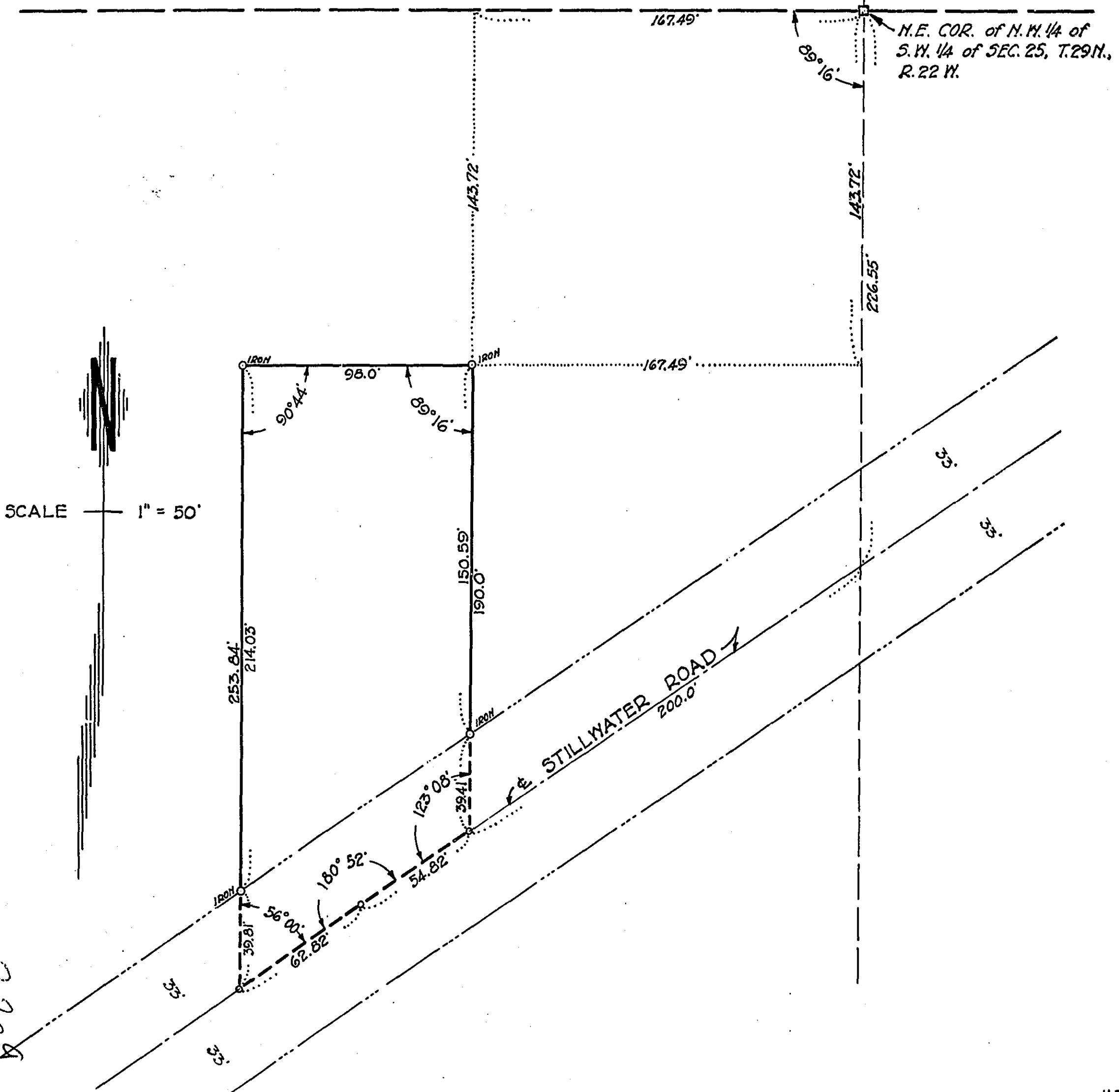
OFFICE OF COUNTY ENGINEER
 RAMSEY COUNTY
 MINN.
 PAUL N. COATES
 COUNTY ENGINEER

**A PARCEL OF LAND
 IN
 N.W. 1/4 OF S.W. 1/4 OF SEC. 25
 T. 29 N. - R. 22 W.**

AUG. 6, 1928.

~ DESCRIPTION ~

A parcel of land in the N.W. 1/4 of S.W. 1/4 of Sec. 25, T. 29 N., R. 22 W., more specifically described as follows: Beginning at a point which is 143.72 ft. south and 167.49 ft. west of the N.E. Cor. of said N.W. 1/4 of S.W. 1/4 of Sec. 25, T. 29 N., R. 22 W.; thence due south and parallel to the east line of said N.W. 1/4 of S.W. 1/4 of Sec. 25, a distance of 190.0 ft. to the center line of the Stillwater Road; thence S. 56° 52' W., along the center line of said road, a distance of 54.82 ft.; thence S. 56° 00' W., along the center line of said road, a distance of 62.82 ft.; thence due north and parallel to the east line of said N.W. 1/4 of S.W. 1/4 of Sec. 25, a distance of 253.84 ft.; thence N. 89° 16' E., and parallel to the north line of said N.W. 1/4 of S.W. 1/4 of Sec. 25, a distance of 98.0 ft. to the point of beginning as shown on this map. Said parcel of land contains 0.498 acres.



MICROFILMED
 RAMSEY CO. ENGR.

R-309

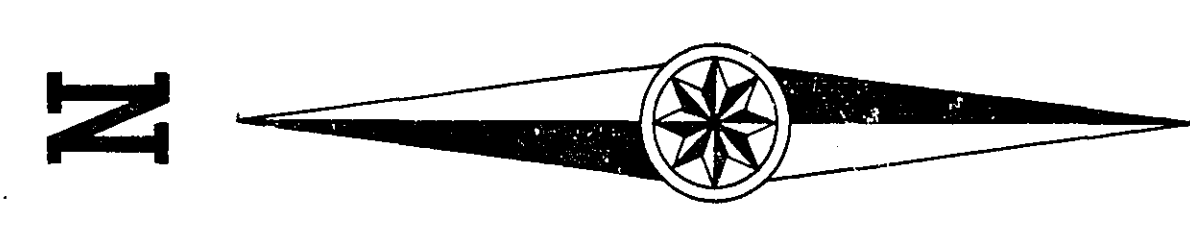
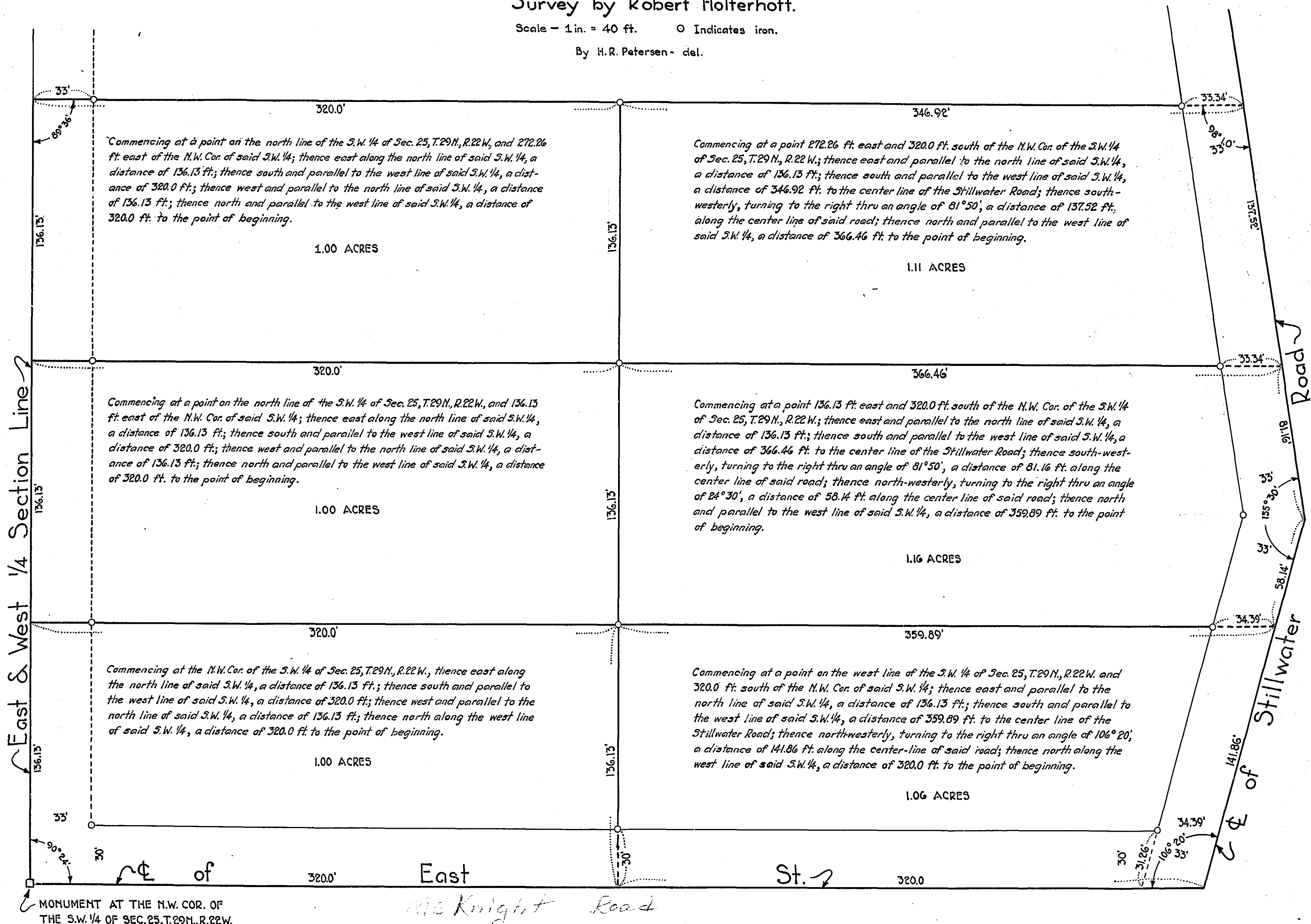
R-309

OFFICE OF COUNTY ENGINEER
 RAMSEY COUNTY MINNESOTA
 PAUL N. COATES
 COUNTY ENGINEER

Survey by Robert Holterhoff.

Scale - 1 in. = 40 ft. O Indicates iron.

By H. R. Petersen - del.



MICROFILMED
 RAMSEY CO. ENGR.

R-30.9