

OFFICE OF COUNTY ENGINEER  
RAMSEY COUNTY  
MINN.

PAUL N. COATES  
COUNTY ENGINEER

SCALE ~ 1 in. = 50 ft.

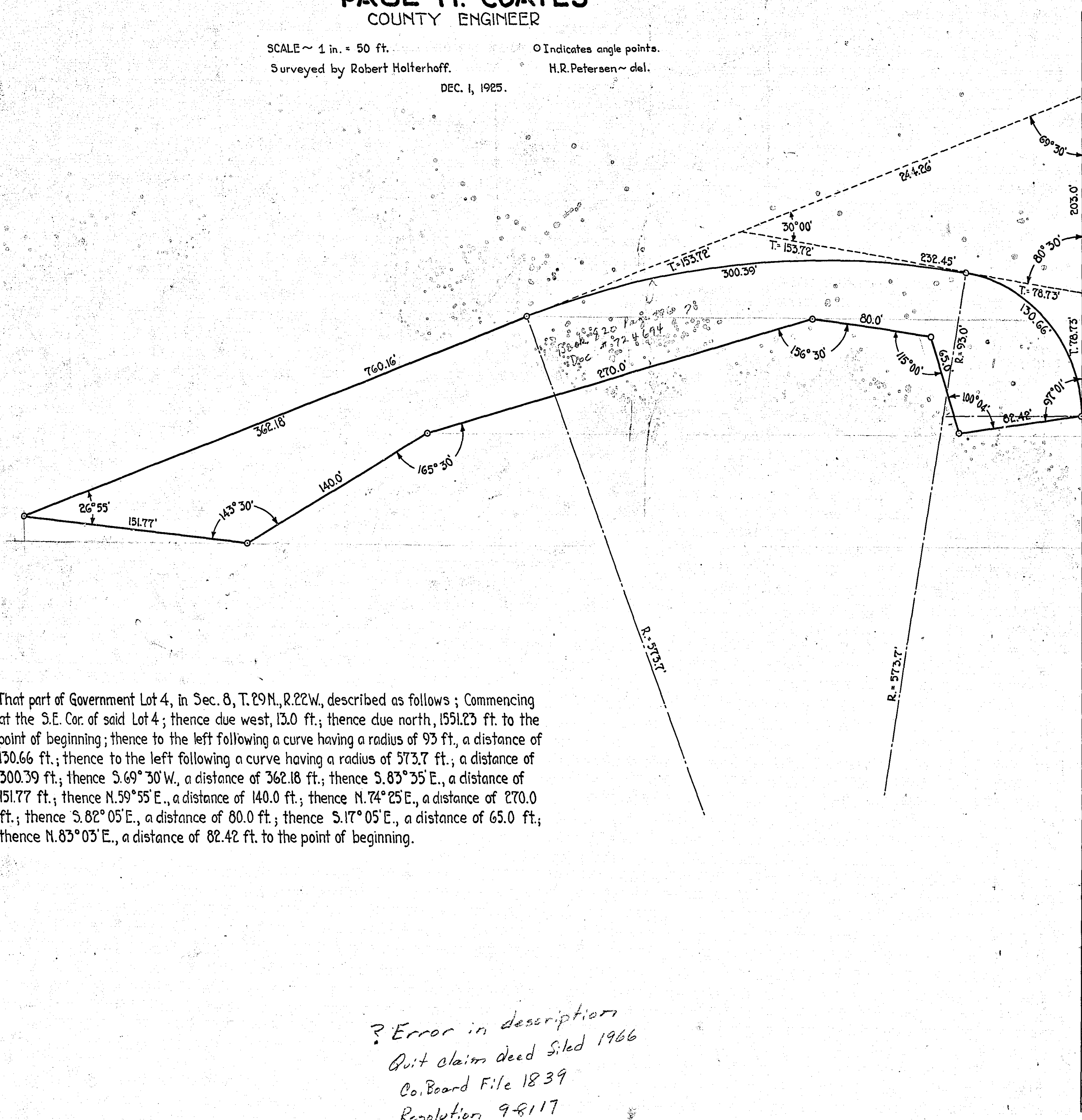
Surveyed by Robert Holterhoff.

DEC. 1, 1925.

○ Indicates angle points.

H.R. Petersen ~ del.

N



That part of Government Lot 4, in Sec. 8, T.29N., R.22W., described as follows; Commencing at the S.E. Cor. of said Lot 4; thence due west, 13.0 ft.; thence due north, 1551.23 ft. to the point of beginning; thence to the left following a curve having a radius of 93 ft., a distance of 130.66 ft.; thence to the left following a curve having a radius of 573.7 ft.; a distance of 300.39 ft.; thence S.69°30'W., a distance of 362.18 ft.; thence S.83°35'E., a distance of 151.77 ft.; thence N.59°55'E., a distance of 140.0 ft.; thence N.74°25'E., a distance of 270.0 ft.; thence S.82°05'E., a distance of 80.0 ft.; thence S.17°05'E., a distance of 65.0 ft.; thence N.83°03'E., a distance of 82.42 ft. to the point of beginning.

? Error in description  
Quit claim deed filed 1966  
Co. Board File 1839  
Resolution 9-8117

Lake Gervais Peninsula

MICROFILMED  
RAMSEY CO. ENGR.

R-301