

NEG. 66
Minnie Nystrom et al
Pt. W/2 S.E. 1/4 Sec. 27-30-22
2.01 Ac.

NEG. 69
Robert M. Hansen
Pt. W/2 S.E. 1/4 Sec. 27-30-22
Lots 10 to 14 Blk. 1 Summit Farm
Lots 4 to 7 Blk. 2 Homesite
1.92 Ac.

NEG. 67
Charles Scheunemann et al
Pt. W/2 S.E. 1/4 Sec. 27-30-22
2.47 Ac.

B.P. NEG. 69
Robert M. Hansen
Lots 4, 5, 6, 7 Blk. 2 Sun Mt Farm
1.64 Ac. (Exp. 12-31-22)

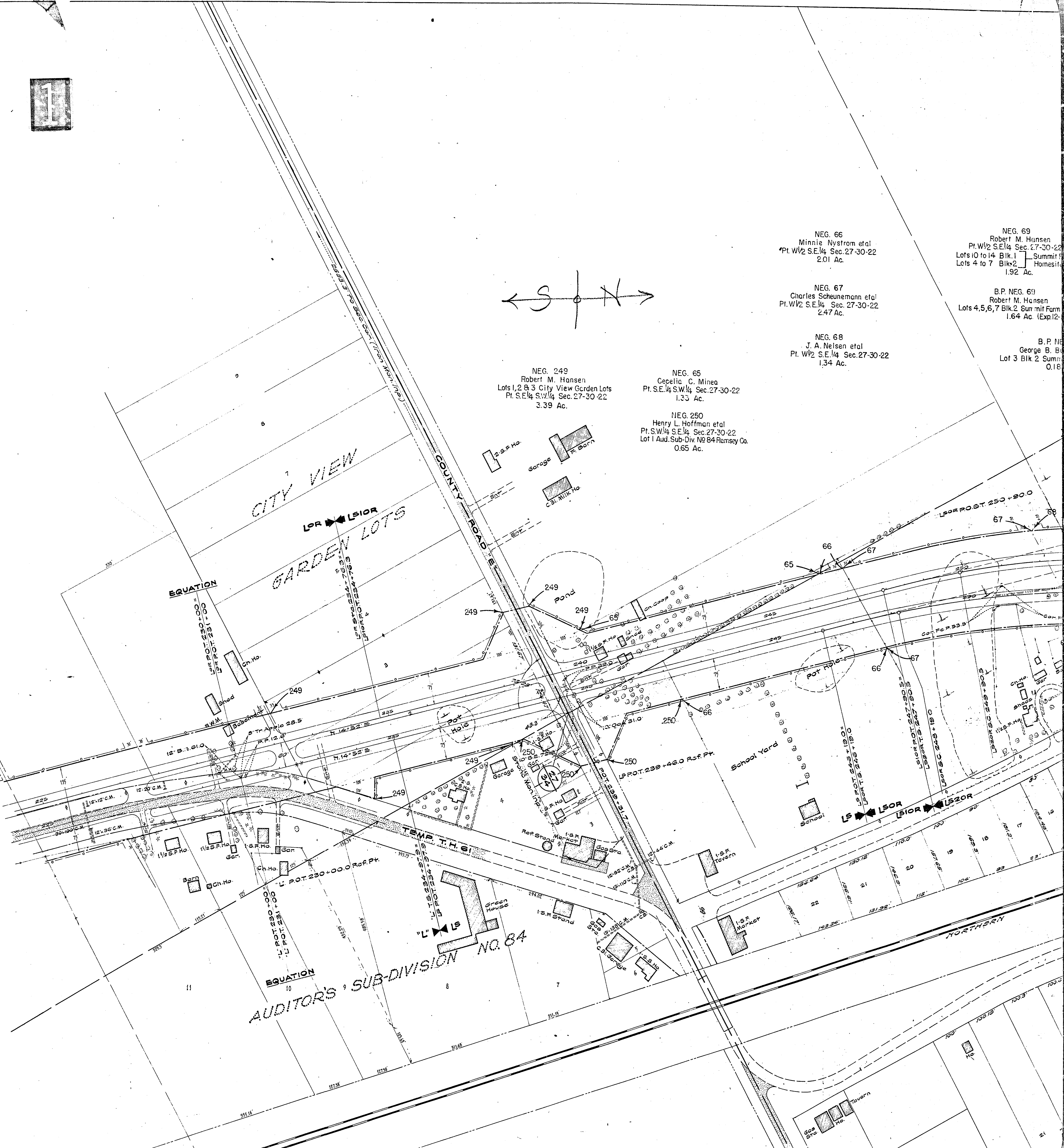
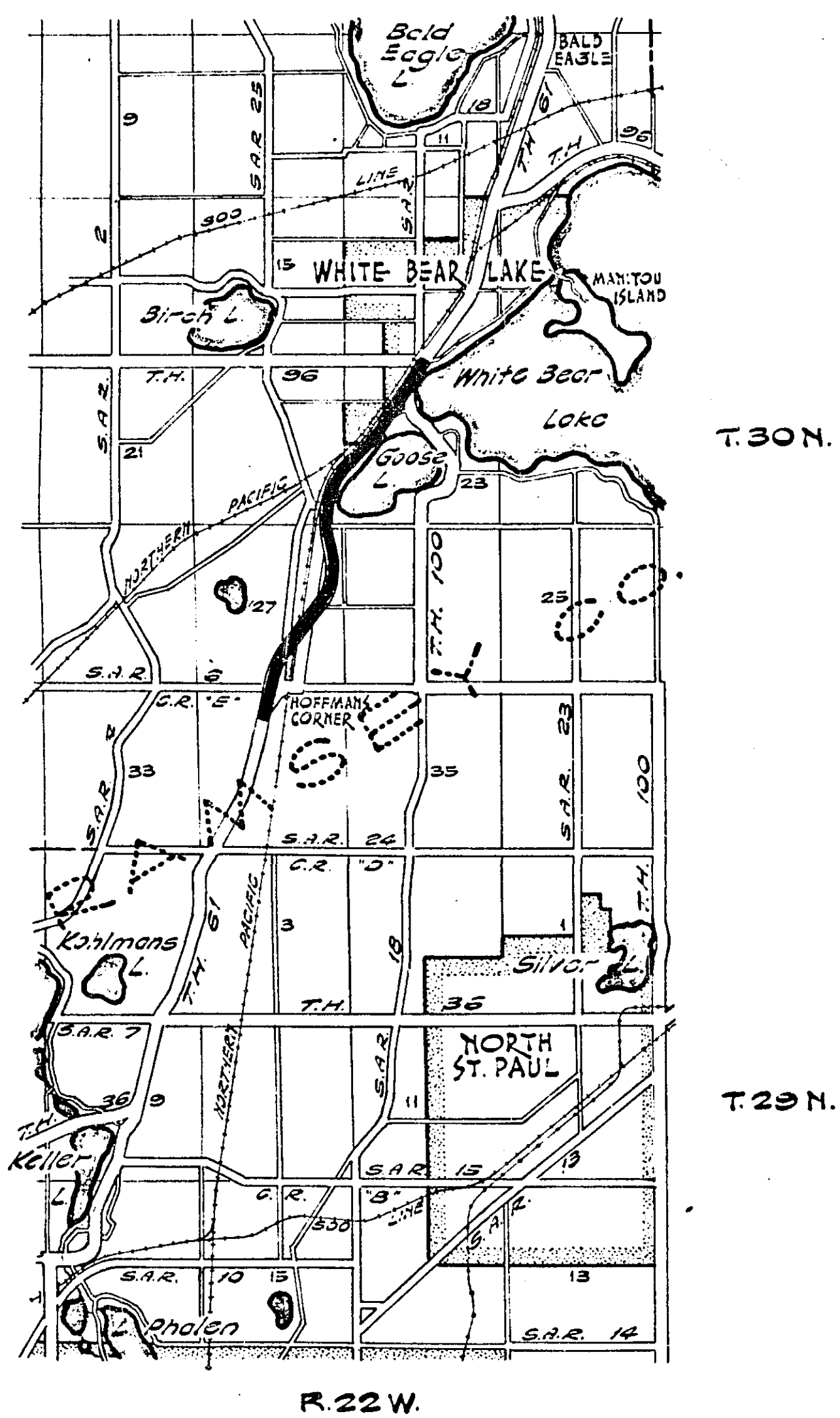
NEG. 68
J. A. Nelsen et al
Pt. W/2 S.E. 1/4 Sec. 27-30-22
1.34 Ac.

B.P. NEG. 68
George B. Blomquist
Lot 3 Blk. 2 Summit Farm
0.18 Ac.

NEG. 249
Robert M. Hansen
Lots 1, 2 & 3 City View Garden Lots
Pt. S.E. 1/4 S.W. 1/4 Sec. 27-30-22
3.39 Ac.

NEG. 65
Cecelia C. Minea
Pt. S.E. 1/4 S.W. 1/4 Sec. 27-30-22
1.33 Ac.

NEG. 250
Henry L. Hoffman et al
Pt. S.W. 1/4 S.E. 1/4 Sec. 27-30-22
Lot 1 Aud. Sub-Div. No. 84 Ramsey Co.
0.65 Ac.



STATE OF MINNESOTA
DEPARTMENT OF HIGHWAYS
RIGHT OF WAY MAP
RAMSEY COUNTY
ROAD "E" (HOFFMAN'S CORNER) to JCT. T.H. 96 IN WHITE BEAR LAKE
S.P. 6222 T.H. 61=1

2

NEG. 69
Robert M. Hansen
Pt. W/2 S.E. 1/4 Sec. 27-30-22
Lots 10 to 14 Blk. 1
Summit Farm
Homesites
1.92 Ac.

NEG. 70
William Toenjes
Lot 9 Blk. 1 Summit Farm Homesites
0.02 Ac.

NEG. 72
Robert M. Hansen
Lots 18, 2 Block 2
Summit Farm Homesites
1.02 Ac.

B.P. NEG. 69
Robert M. Hansen
Lots 4, 5, 6, 7 Blk. 2 Summit Farm Homesites
1.64 Ac. (Exp. 12-1-55)

NEG. 71
George B. Buchan et al
Lot 3 Blk. 2 Summit Farm Homesites
0.60 Ac.

NEG. 73
William Toenjes
Pt. W/2 S.E. 1/4 Sec. 27-30-22
0.05 Ac.

B.P. NEG. 71
George B. Buchan et al
Lot 3 Blk. 2 Summit Farm Homesites
0.18 Ac. (Exp. 12-1-55)

B.P. 2A
George Brehm, et al
Part NE 1/4 Sec. 27-30-22
0.76 Ac.

B.P. 2B
Oliver Peloquin Jr.
Part NE 1/4 Sec. 27-30-22
1.10 Ac.

B.P. 2
Harry James Tevlin, et al
Part NE 1/4 Sec. 27-30-22
2.19 Ac.

Permit to Borrow
from N.P. Ry. Co. Dated 8/14/50
Expires 1 year from Date

Permit to Construct
Temporary Haul Road
from N.P. Ry. Co. Dated 8/14/50
Expires 1 year from Date

SEC. 4 ORDER NO. 20385
& WIDTH ORDER NO. 20386
ACCESS ORDER NO. 20387
SLOPE ORDER NO. 20388
POR. S.P. 6222 (61-1-52)

Permit to Borrow from
Northern Pacific Ry. Co. Dated Dec. 6-1948
Expires 1 year from Date
Extended & Renewed 1 year Dated 12/3/49
Expires 12/3/50

END AMD. & ORDER NO. 19937
& AMD. WIDTH ORDER NO. 19938
ACCESS ORDER NO. 19939
SLOPE EASE ORDER NO. 19940
POR. S.P. 6222 (61-1-52)

NEG. 74
John H. Bohmert et al
Lot 3 Strawberry Acres
Ramsey Co.
0.13 Ac.

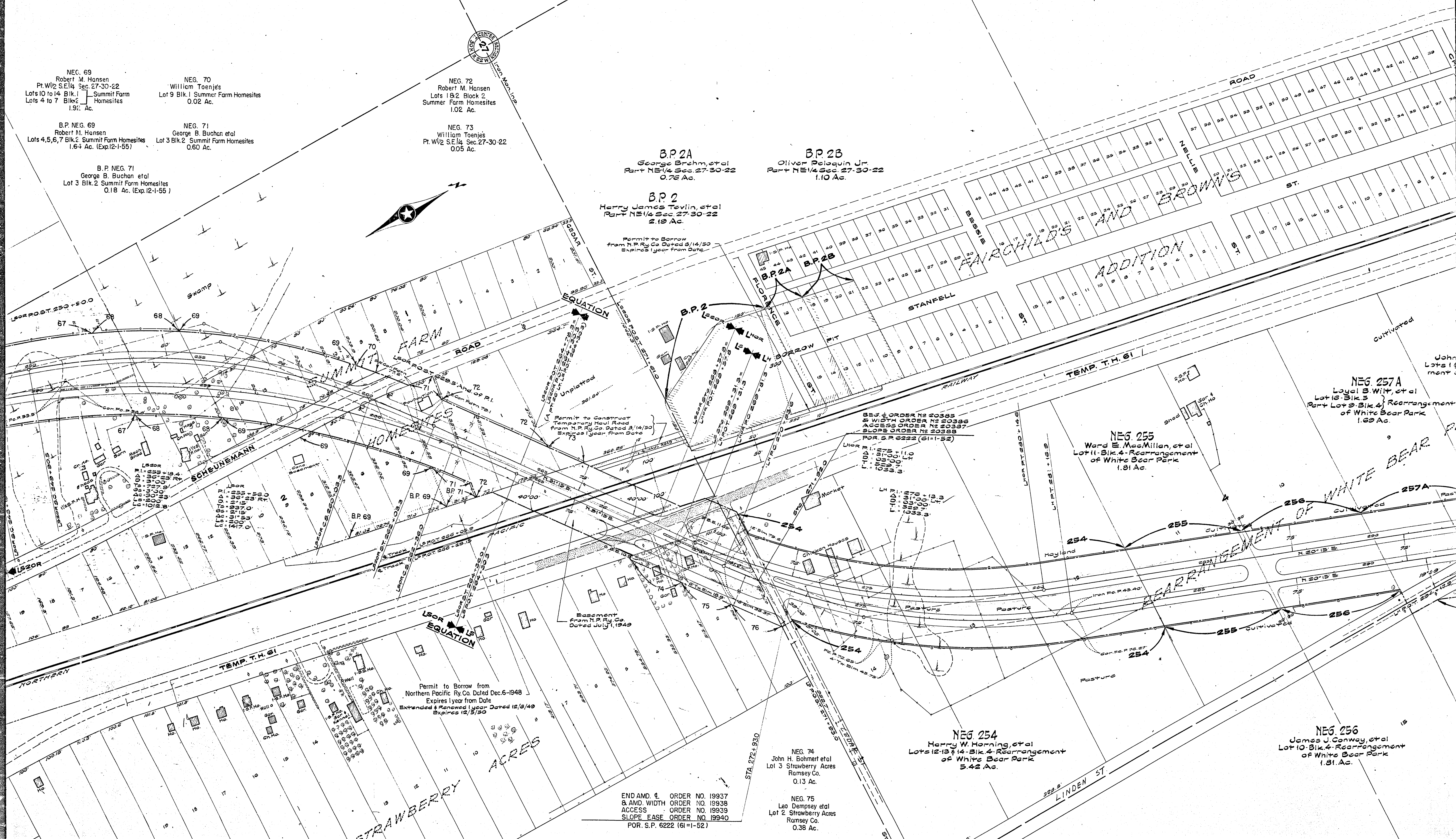
NEG. 75
Leo Dempsey et al
Lot 2 Strawberry Acres
Ramsey Co.
0.38 Ac.

NEG. 254
Harry W. Harning, et al
Lots 12-13 & 14 - Blk. 4 - Rearrangement
of White Bear Park
5.42 Ac.

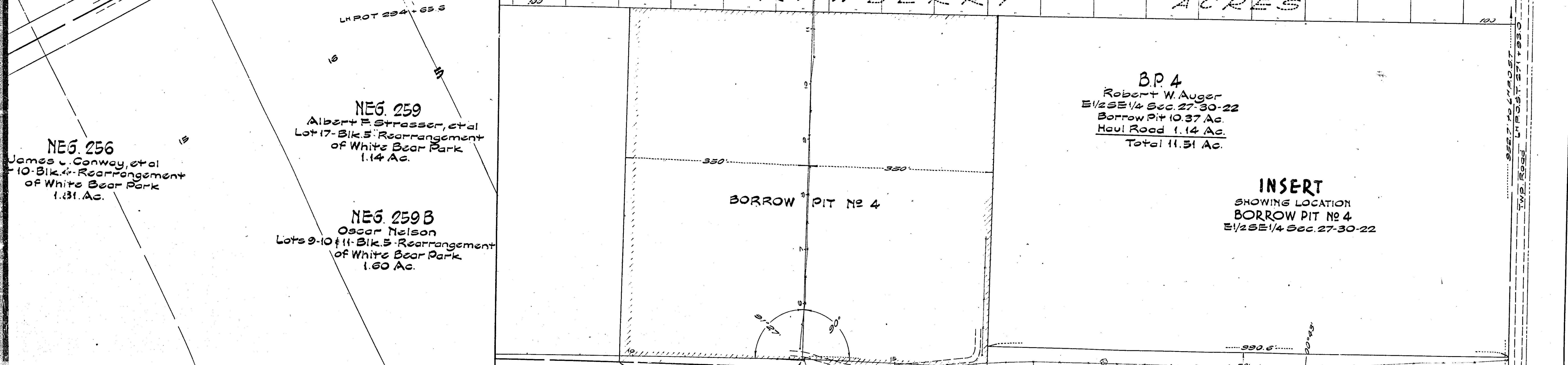
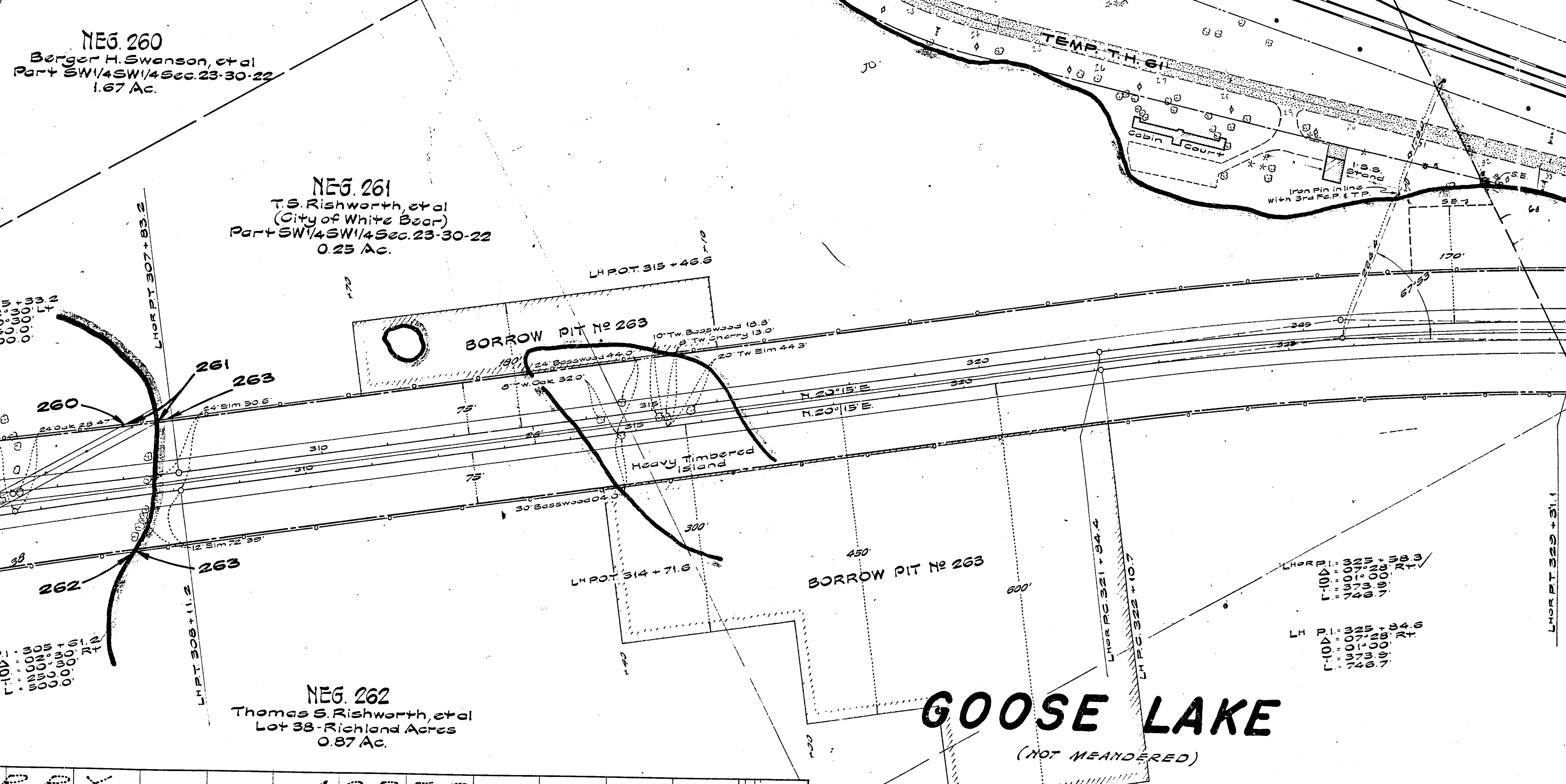
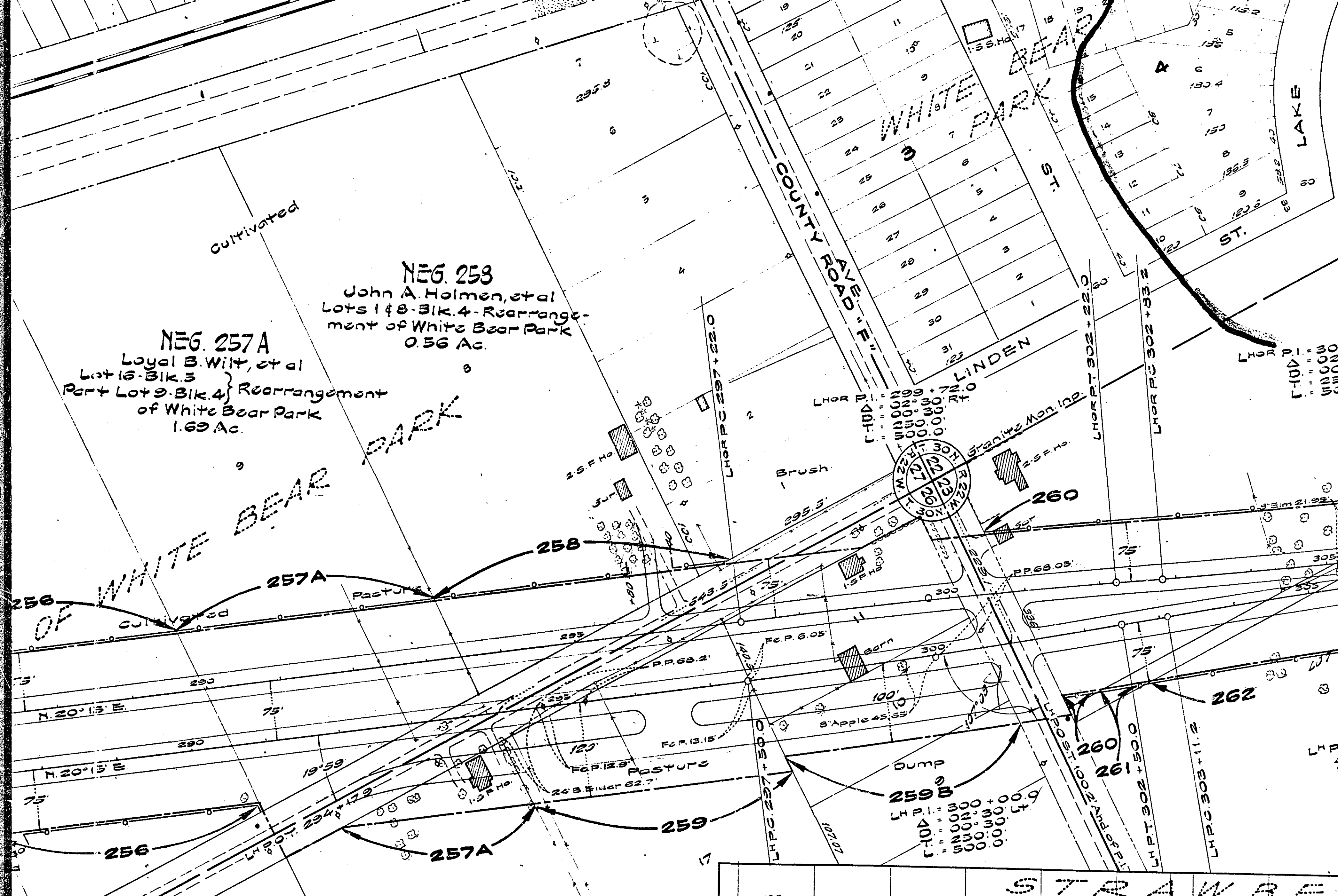
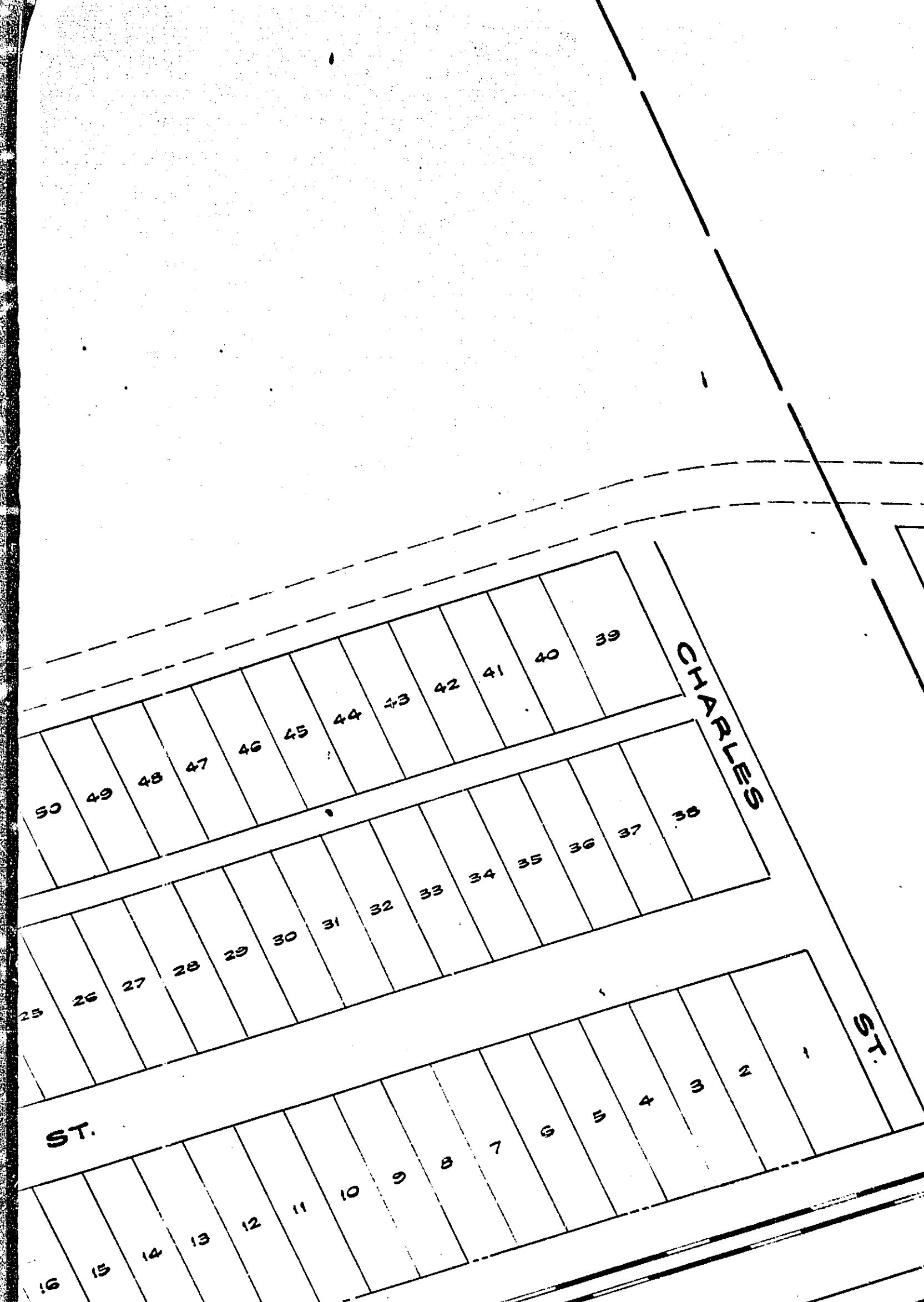
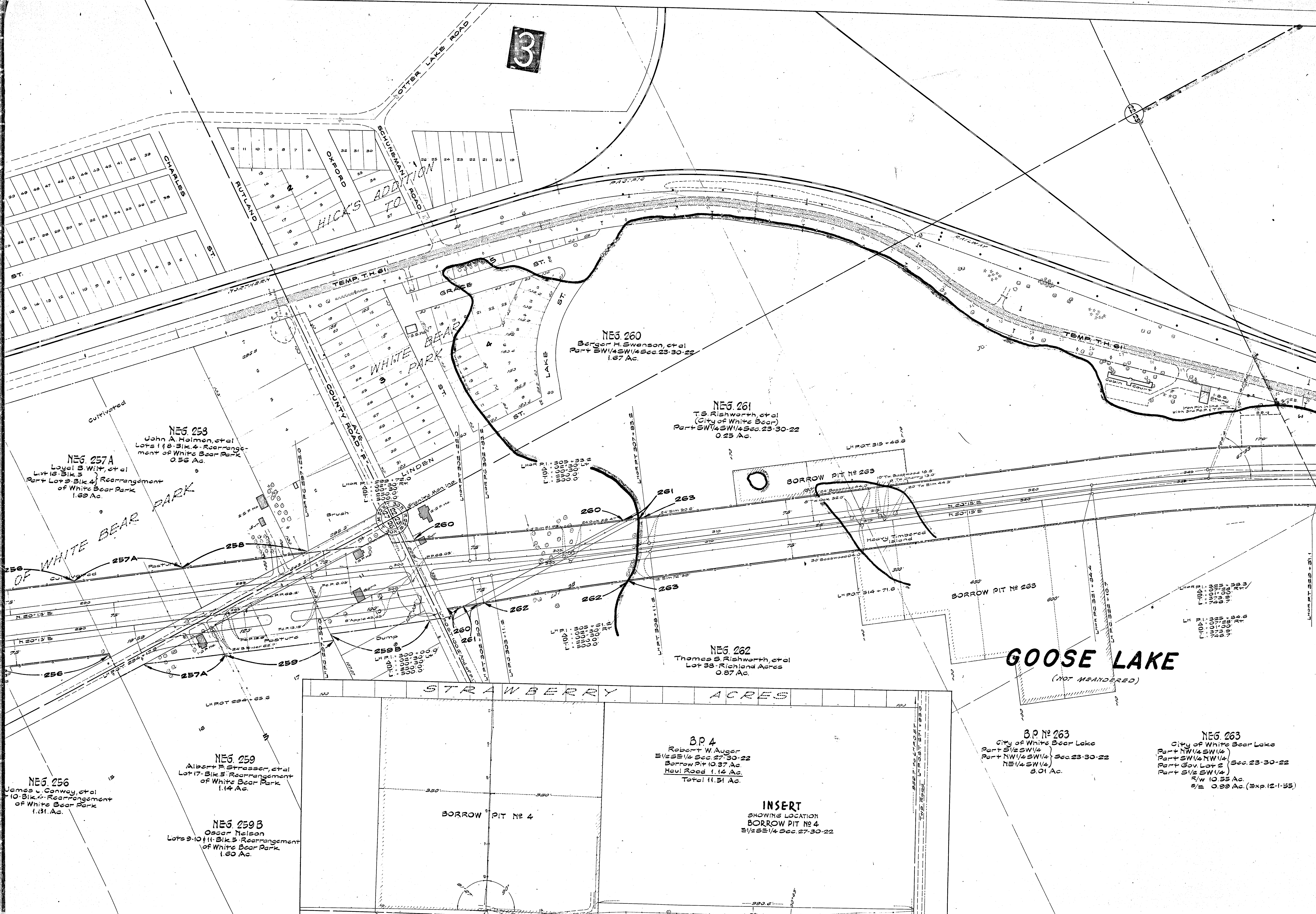
NEG. 256
James J. Conway, et al
Lot 10 - Blk. 4 - Rearrangement
of White Bear Park
1.81 Ac.

NEG. 255
Ward E. MacMillan, et al
Lot 11 - Blk. 4 - Rearrangement
of White Bear Park
1.81 Ac.

NEG. 257A
Loyal B. Wilt, et al
Lot 12 - Blk. 4 - Rearrangement
of White Bear Park
1.69 Ac.



3



NEG. 253
John A. Holmen, et al
Lots 1 & 8 - Bk. 4 - Rearrangement
of White Bear Park
0.56 Ac.

NEG. 257A
Loyal B. Witt, et al
Lot 16 - Bk. 3
Part Lot 9 - Bk. 4 - Rearrangement
of White Bear Park
1.69 Ac.

NEG. 256
James L. Conway, et al
10 - Bk. 4 - Rearrangement
of White Bear Park
1.31 Ac.

NEG. 259
Albert F. Strasser, et al
Lot 17 - Bk. 5 - Rearrangement
of White Bear Park
1.14 Ac.

NEG. 259B
Oscar Nelson
Lots 9-10 & 11 - Bk. 5 - Rearrangement
of White Bear Park
1.60 Ac.

NEG. 260
Berger H. Swanson, et al
Part SW 1/4 SW 1/4 Sec. 23-30-22
1.67 Ac.

NEG. 261
T.S. Rishworth, et al
(City of White Bear)
Part SW 1/4 SW 1/4 Sec. 23-30-22
0.25 Ac.

NEG. 262
Thomas S. Rishworth, et al
Lot 38 - Richland Acres
0.87 Ac.

B.P. 4
Robert W. Auger
E 1/2 SE 1/4 Sec. 27-30-22
Borrow Pit 10.37 Ac.
Haul Road 1.14 Ac.
Total 11.51 Ac.

B.P. No 263
City of White Bear Lake
Part SW 1/4 SW 1/4
Part NW 1/4 SW 1/4 Sec. 23-30-22
NE 1/4 SW 1/4
8.01 Ac.

NEG. 263
City of White Bear Lake
Part NW 1/4 SW 1/4
Part SW 1/4 NW 1/4 Sec. 23-30-22
Part Gov. Lot 2
Part SW 1/4 SW 1/4
R/W 10.55 Ac.
E/E 0.99 Ac. (Exp. 12-1-55)

INSERT
SHOWING LOCATION
BORROW PIT No 4
E 1/2 SE 1/4 Sec. 27-30-22

GOOSE LAKE
(NOT MEANDERED)

4

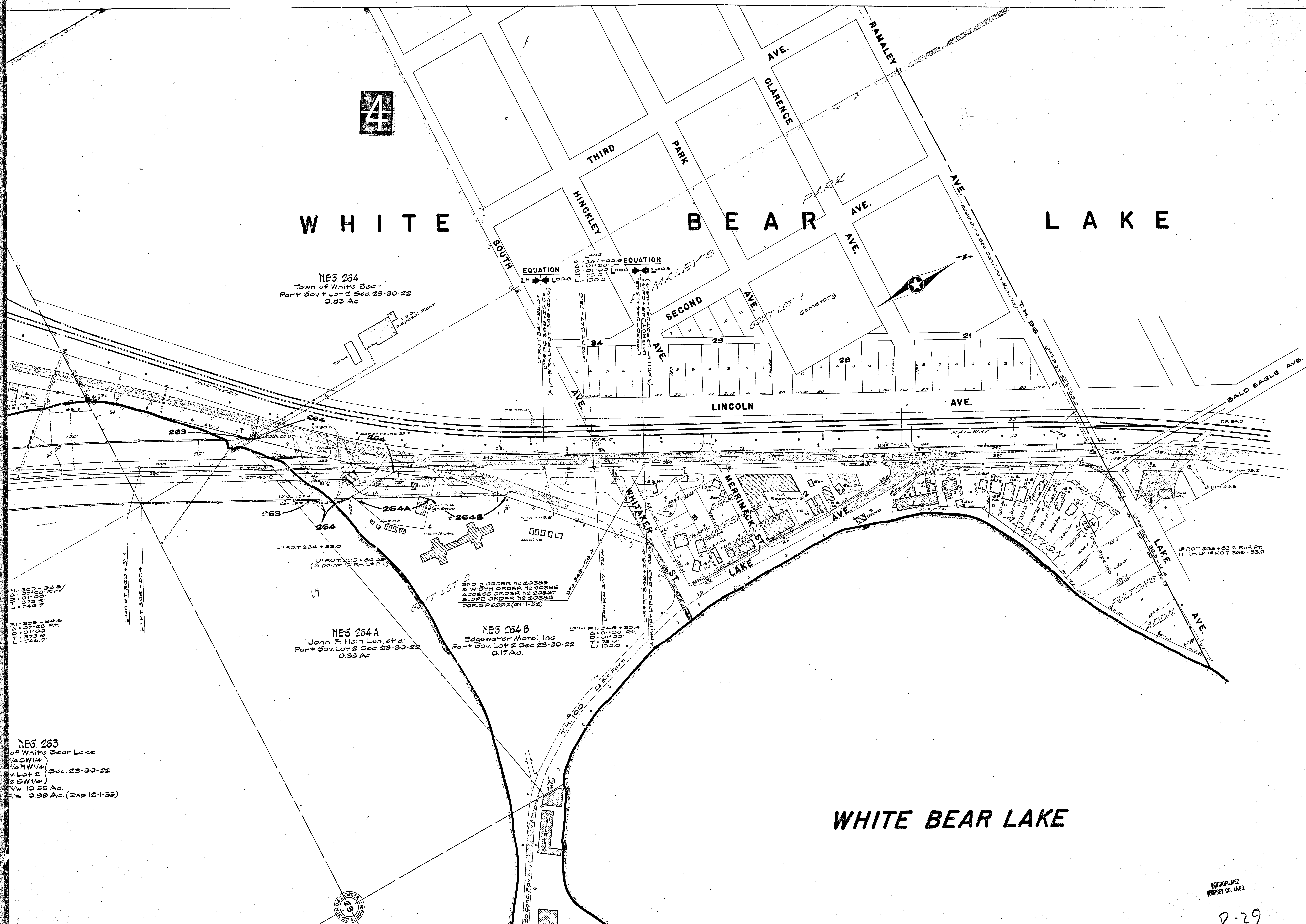
WHITE BEAR LAKE

NEG. 264
Town of White Bear
Part Gov. Lot 2 Sec. 23-30-22
0.83 Ac.

NEG. 264A
John F. Hein Len, et al
Part Gov. Lot 2 Sec. 23-30-22
0.33 Ac.

NEG. 264B
Edgewater Motel, Inc.
Part Gov. Lot 2 Sec. 23-30-22
0.17 Ac.

NEG. 263
of White Bear Lake
1/4 SW 1/4
1/4 NW 1/4
v. Lot 2
2 SW 1/4
r/w 10.55 Ac.
1/2 E 0.99 Ac. (Exp. 12-1-55)



WHITE BEAR LAKE

REPRODUCTION
WHARSEY CO. ENGR.

R-29