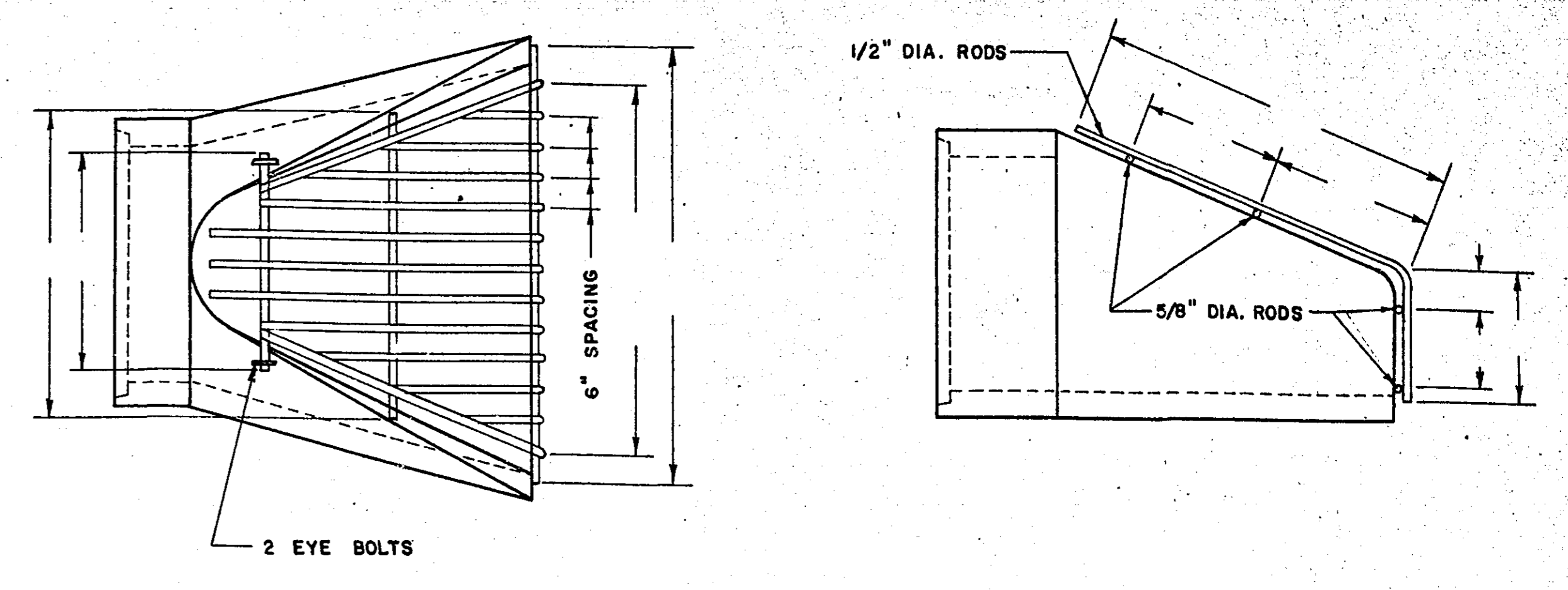
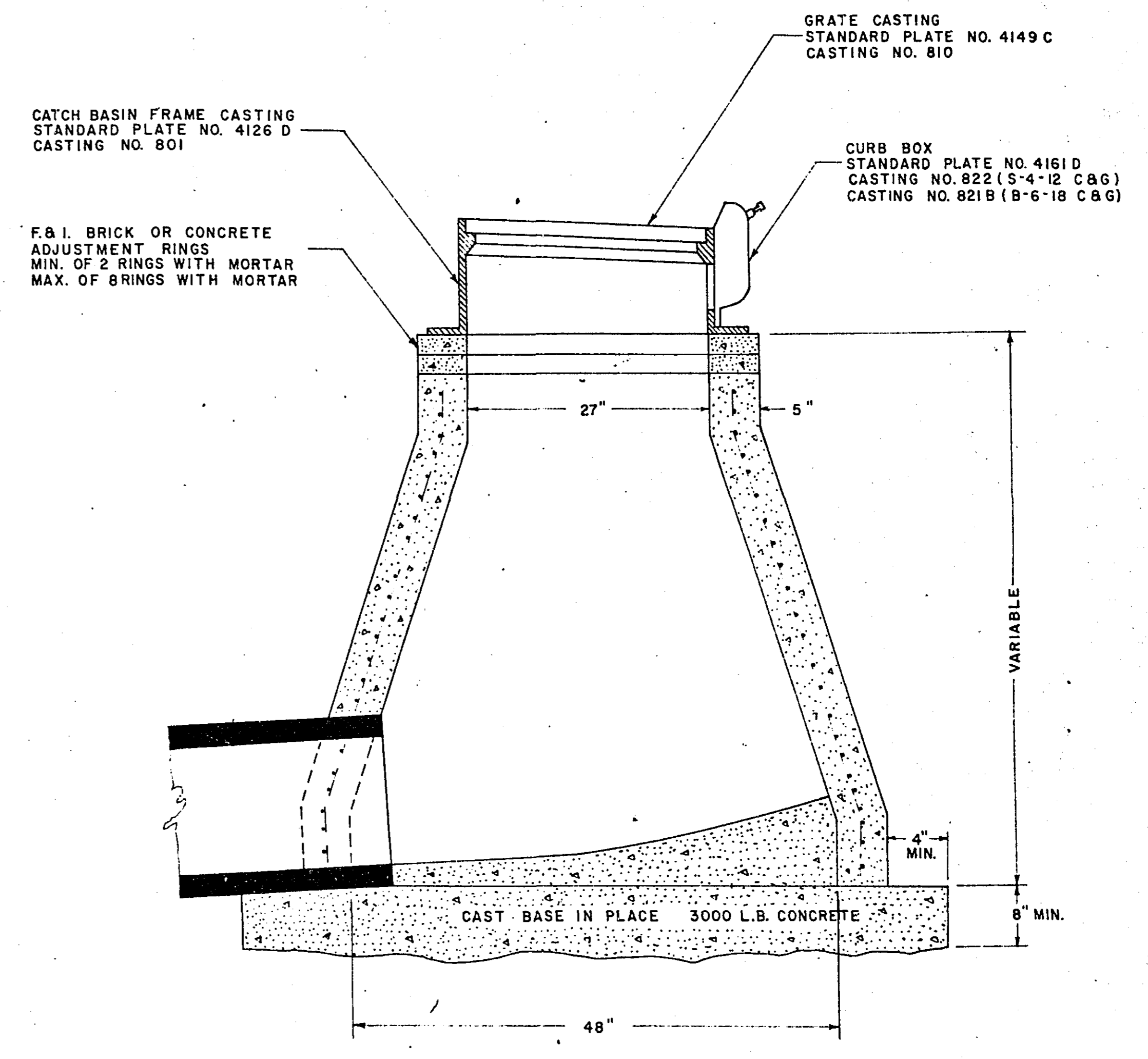


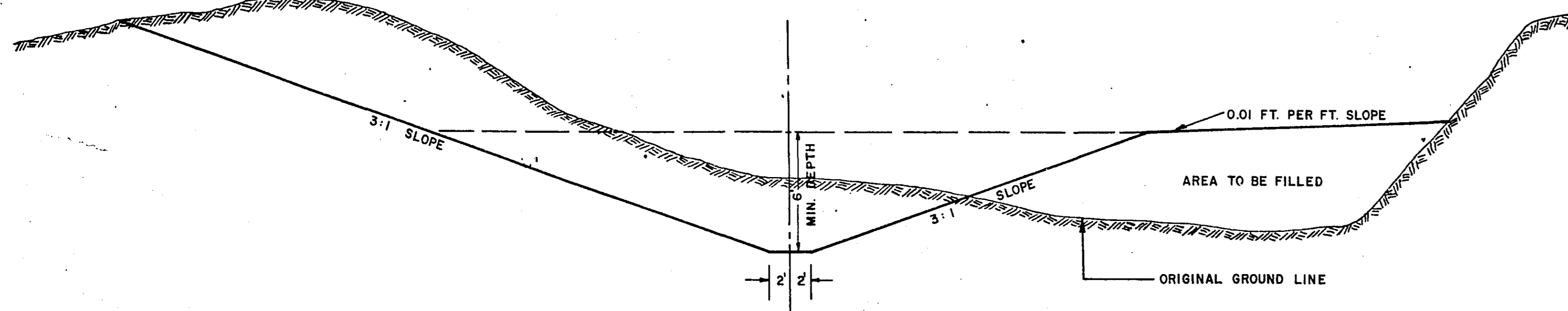
STANDARD MANHOLE DETAIL



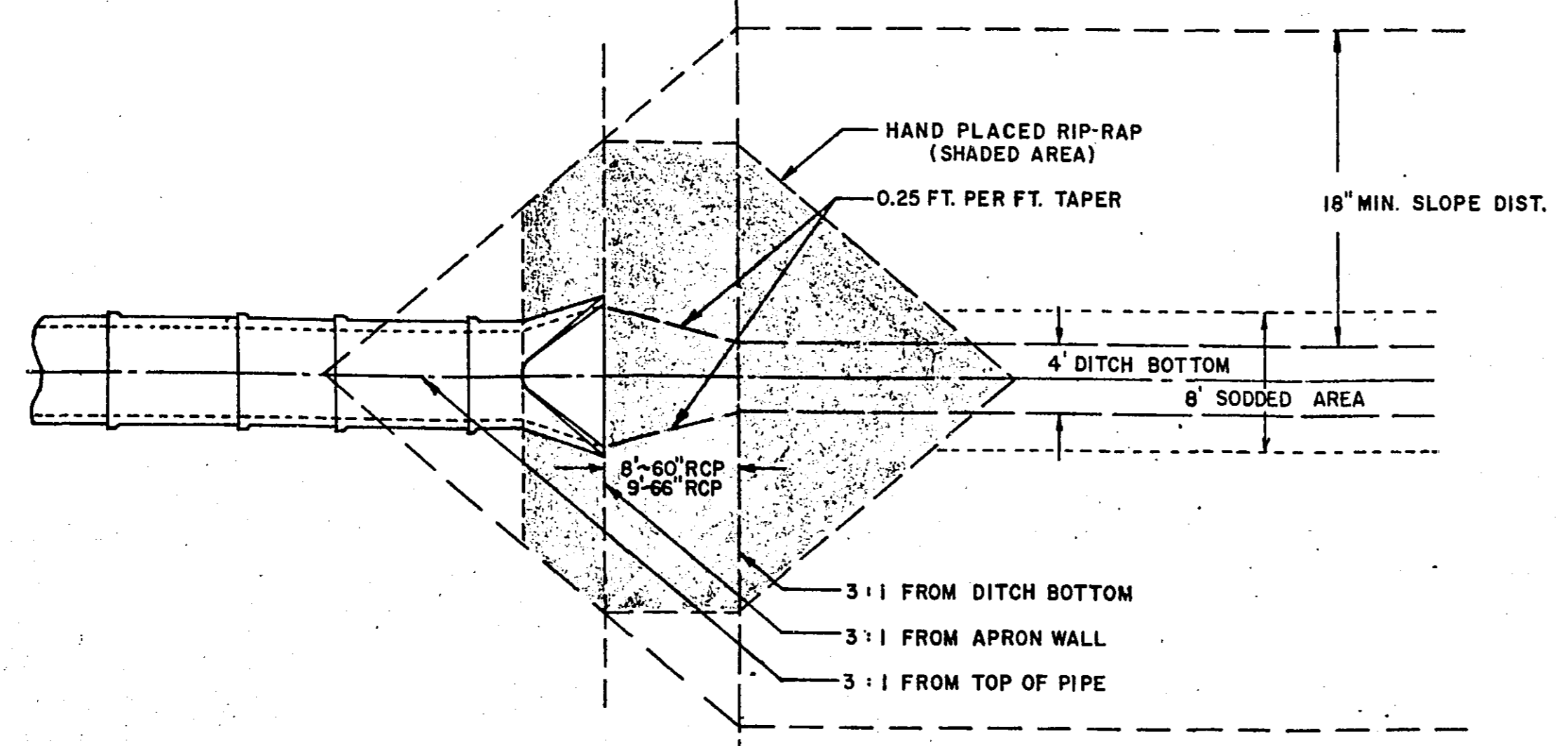
TRASH GUARD
CRETEX OR EQUAL



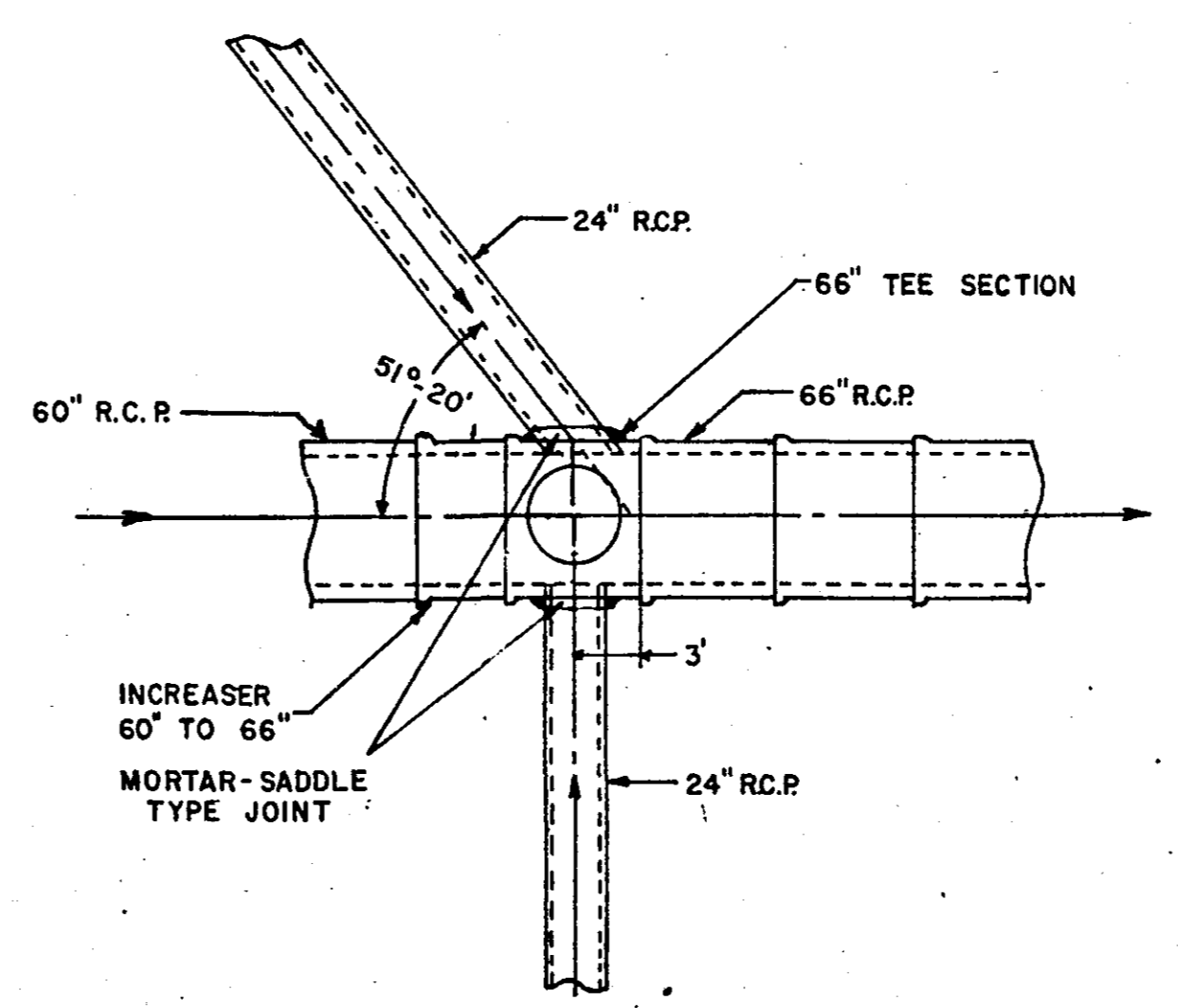
STANDARD CATCH BASIN
DESIGN "C" OR "G"



TYPICAL DITCH SECTION (VOID)



FLARED END SECTION DETAIL (VOID)



DETAIL-24" CONN. TO 66" R.C.P. TEE

STORM SEWER DETAIL SHEET

MILNER W. CARLEY & ASSOCIATES		
CONSULTING CIVIL ENGINEERS LAND SURVEYORS		
500 W. HWY. 96 ST. PAUL 12, MINN. 484-3301	314 OAK ST. SAUK CENTRE, MINN. 352-3664	18 4TH AVE. S.E. ST. CLOUD, MINN. 251-7751
SURVEY BY	I hereby certify that this plan, specification, or report was prepared by me or under my direct supervision and that I am a duly Registered Professional Engineer under the laws of the State of Minnesota.	REVISIONS
DESIGNED BY		
DRAWN BY		
APPROVED BY		
SHEET 4 OF 8 SHEETS	Date	Reg. No. COMM. NO.

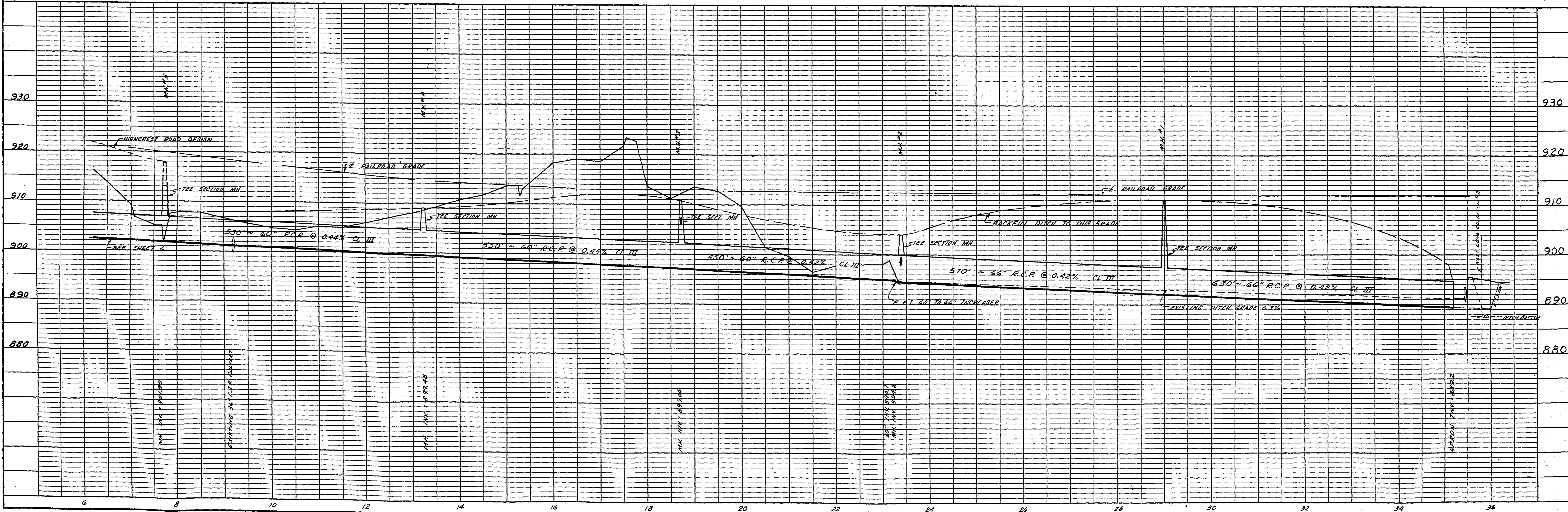
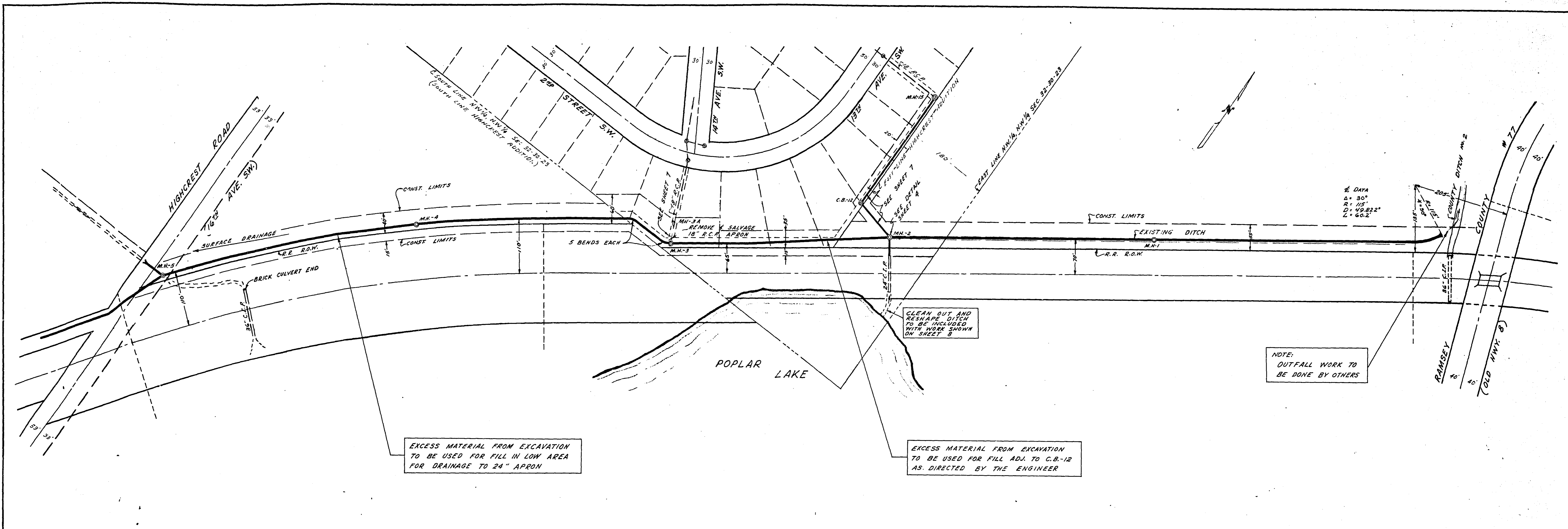
MICROFILMED
RAMSEY CO. ENGR

R-210



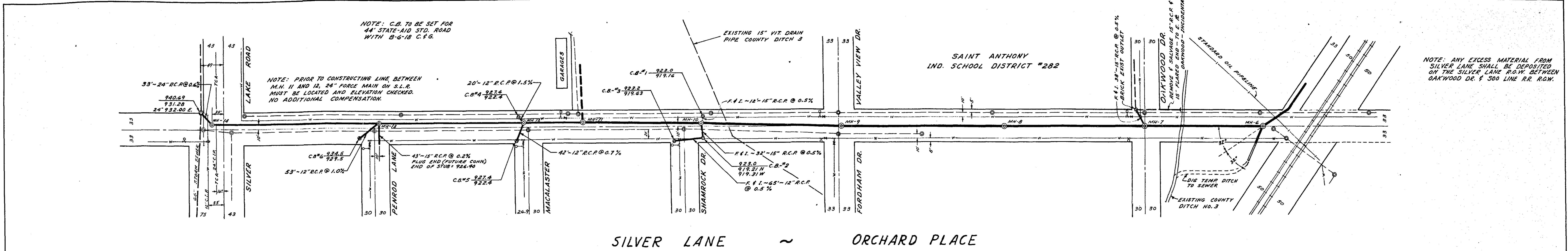
PLAN
 SURVEYED BY
 PLOTTED BY
 NOTE BOOK NO.
 RT. OF WAY CHECKED
 NO. 22-27

PROFILE
 SURVEYED BY
 NOTE BOOK NO.
 GRADES CHECKED
 NO. 22-27

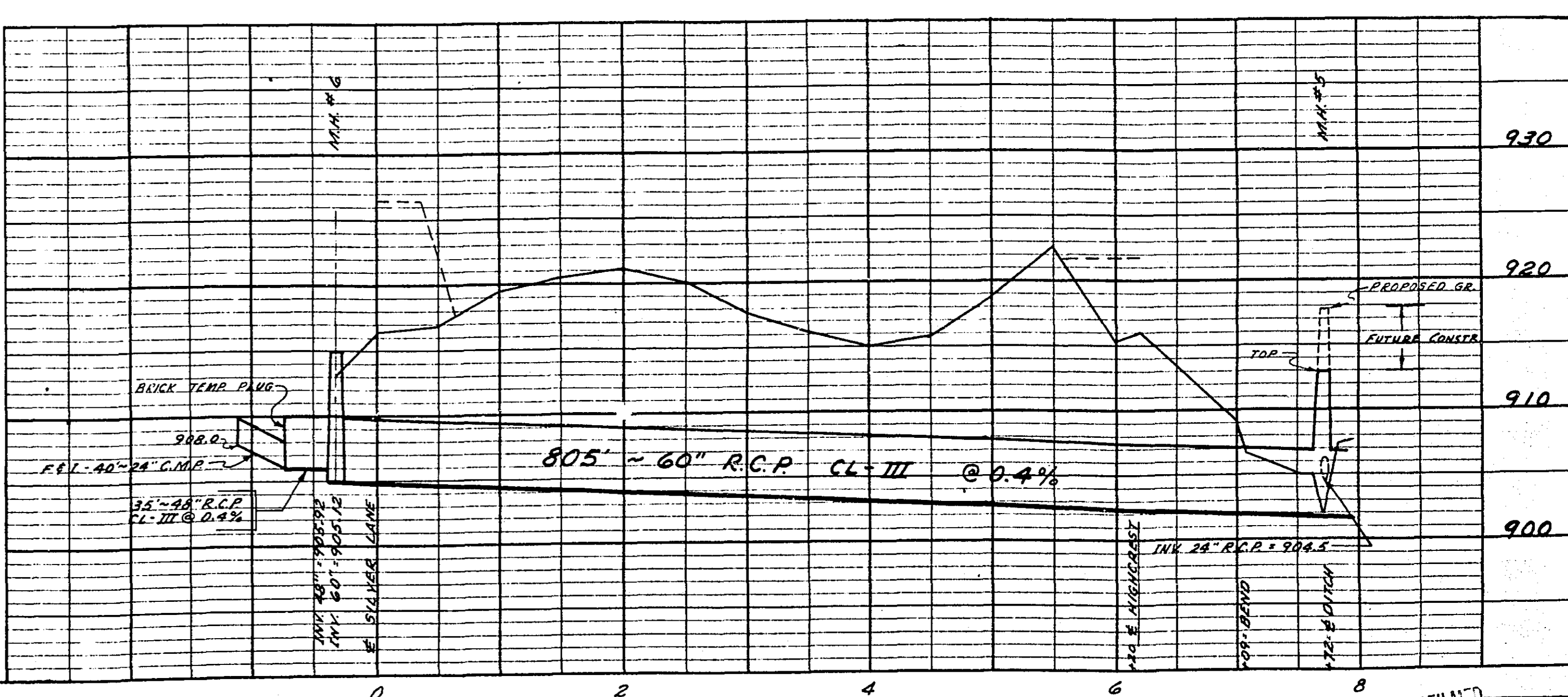
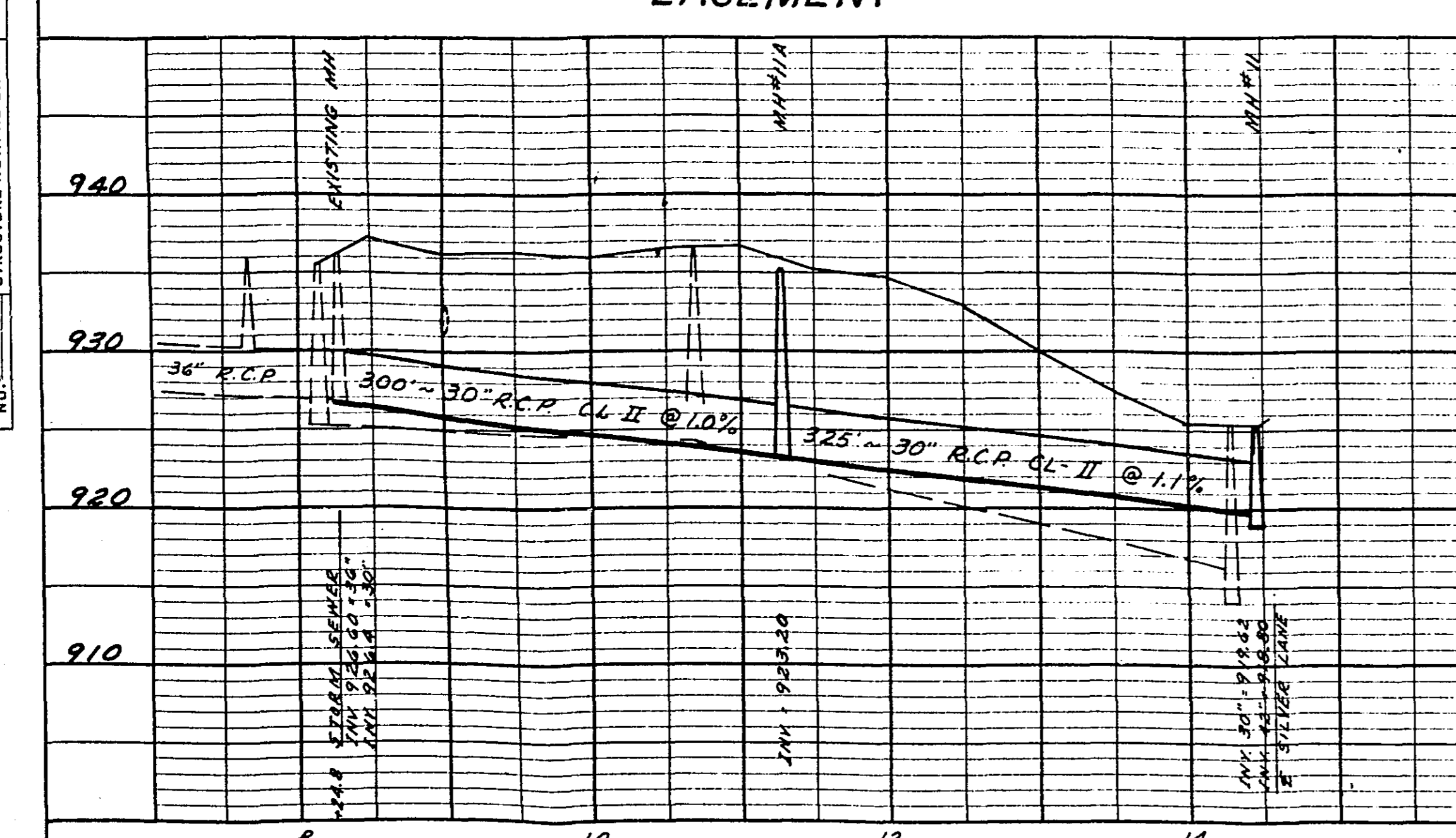
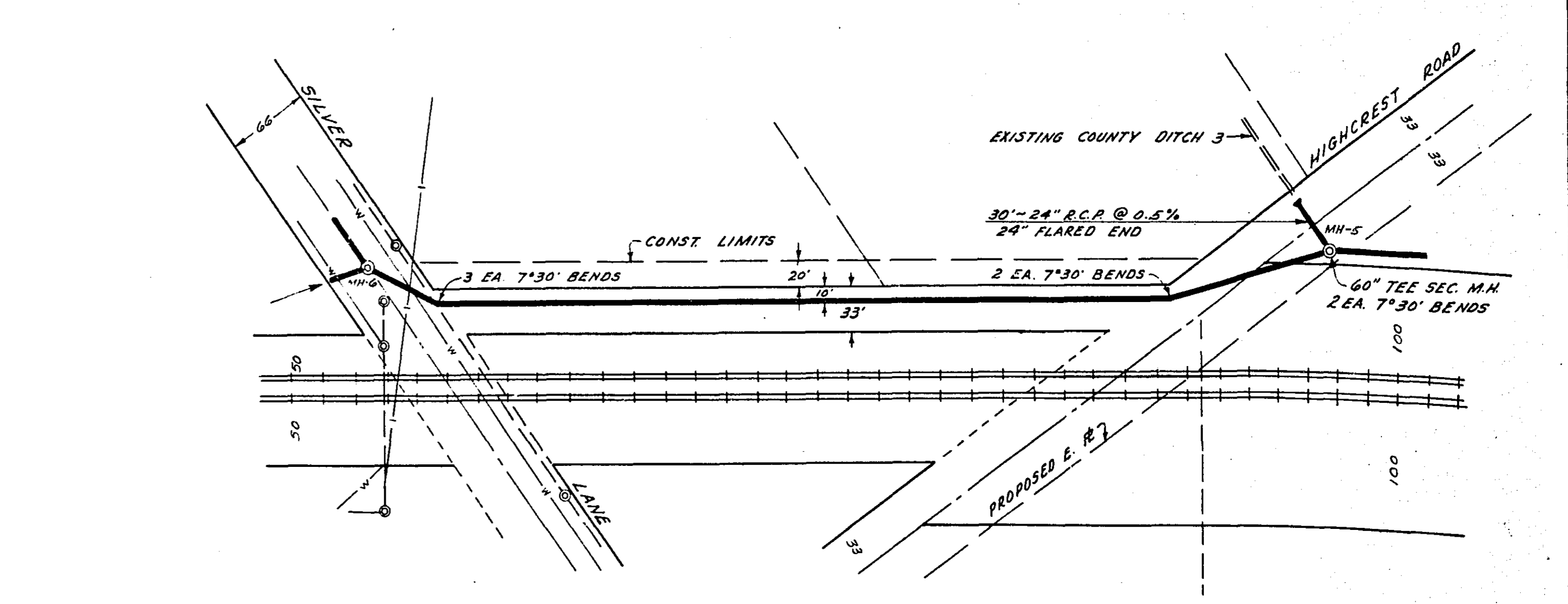
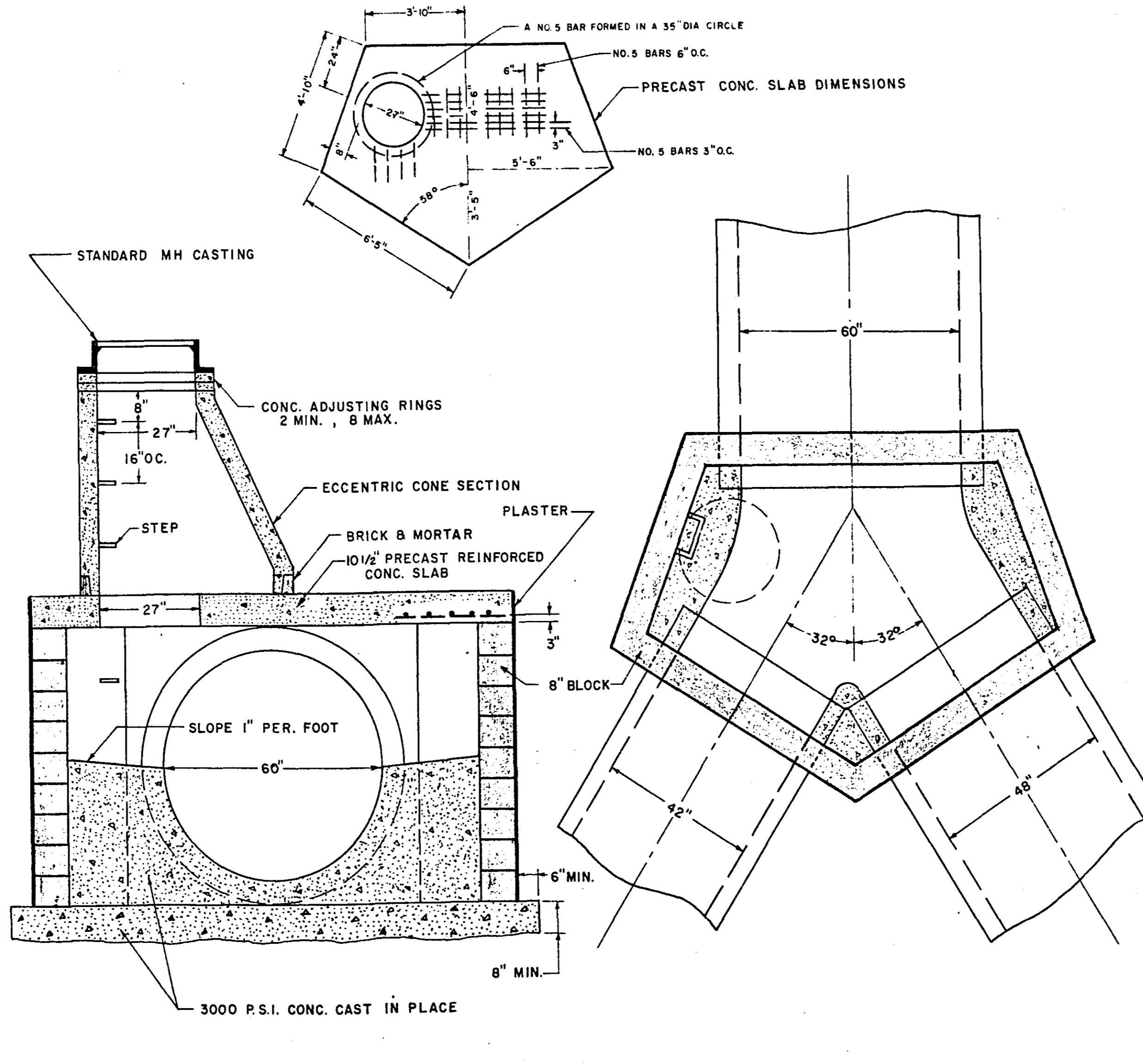
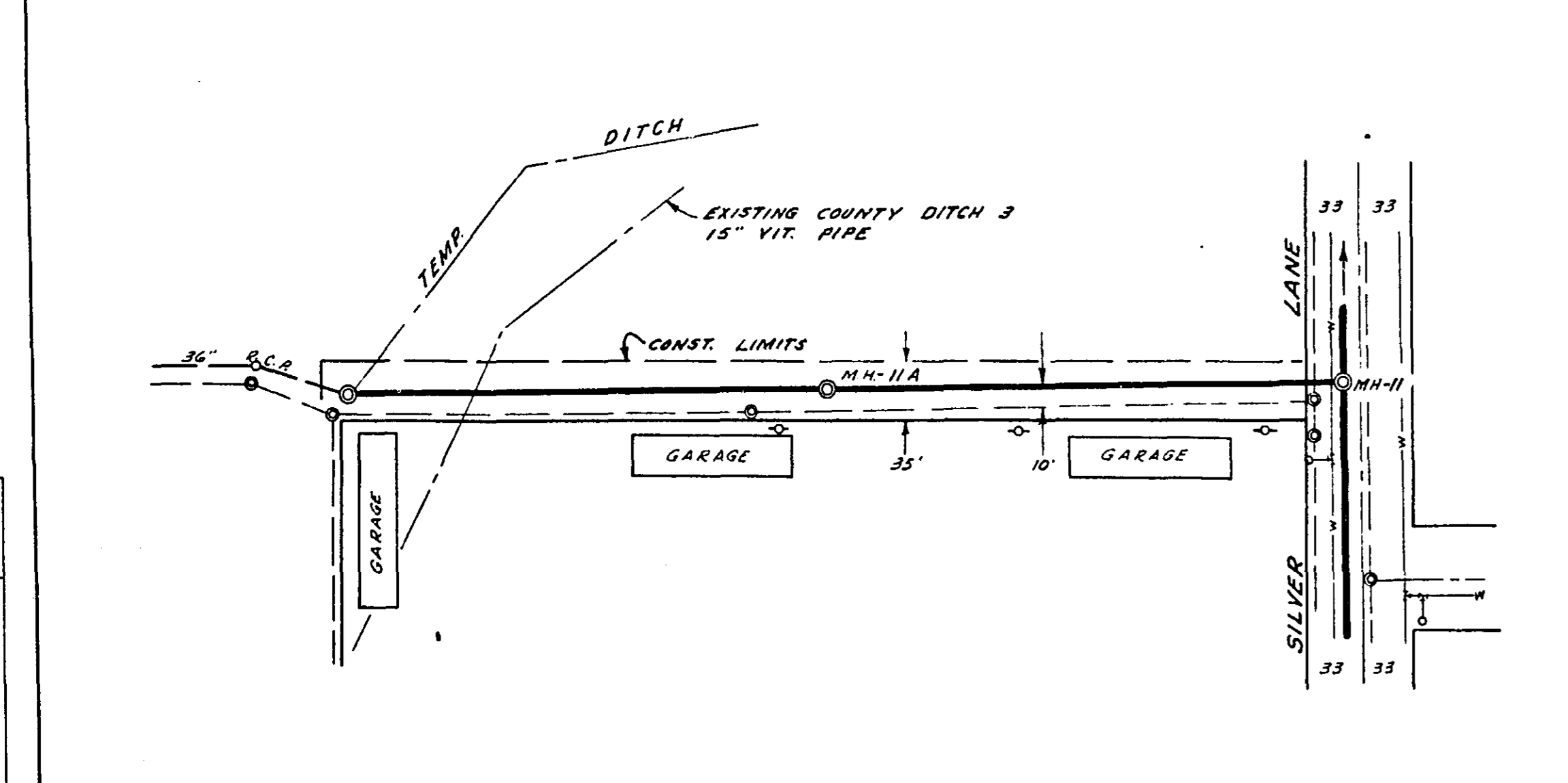
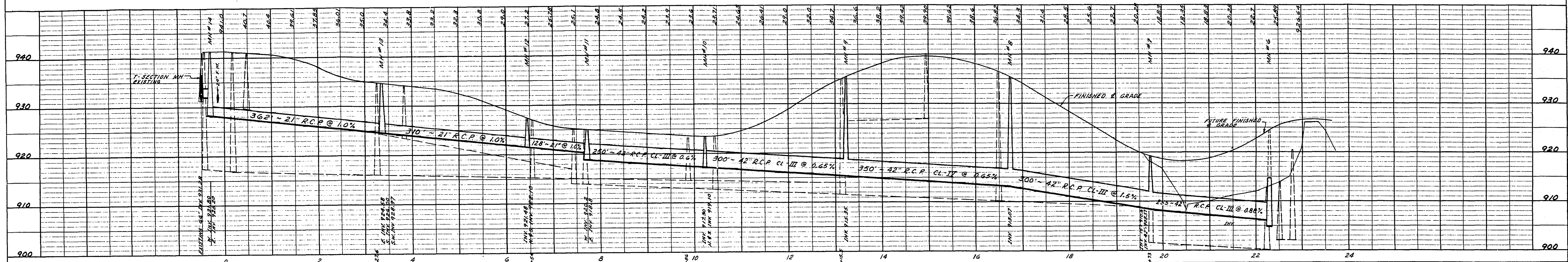


DATE	
BY	
CHECKED	
NO.	
PLAN	
NO.	

DATE	
BY	
CHECKED	
NO.	
PROFILE	
NO.	



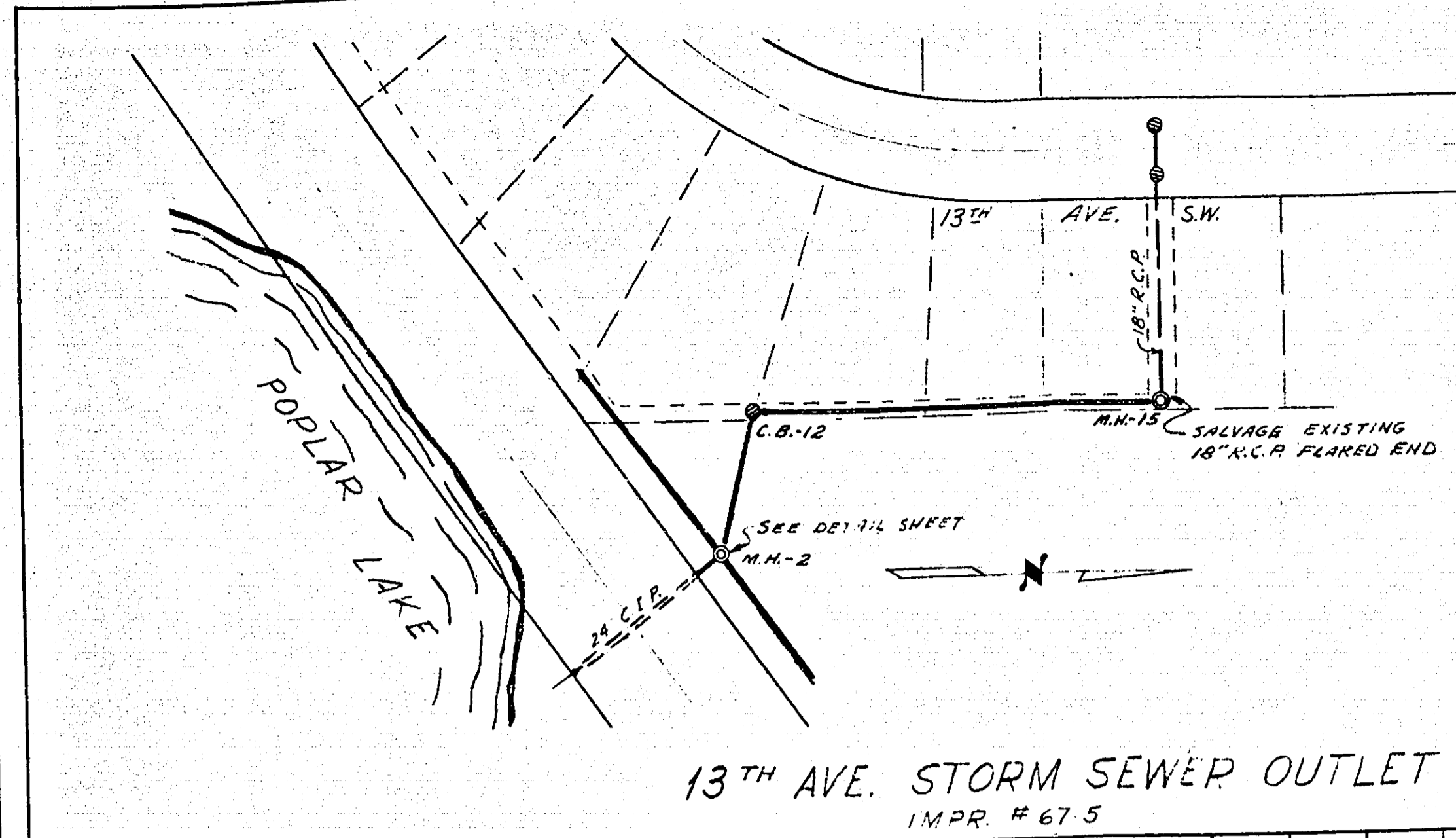
SILVER LANE ~ ORCHARD PLACE



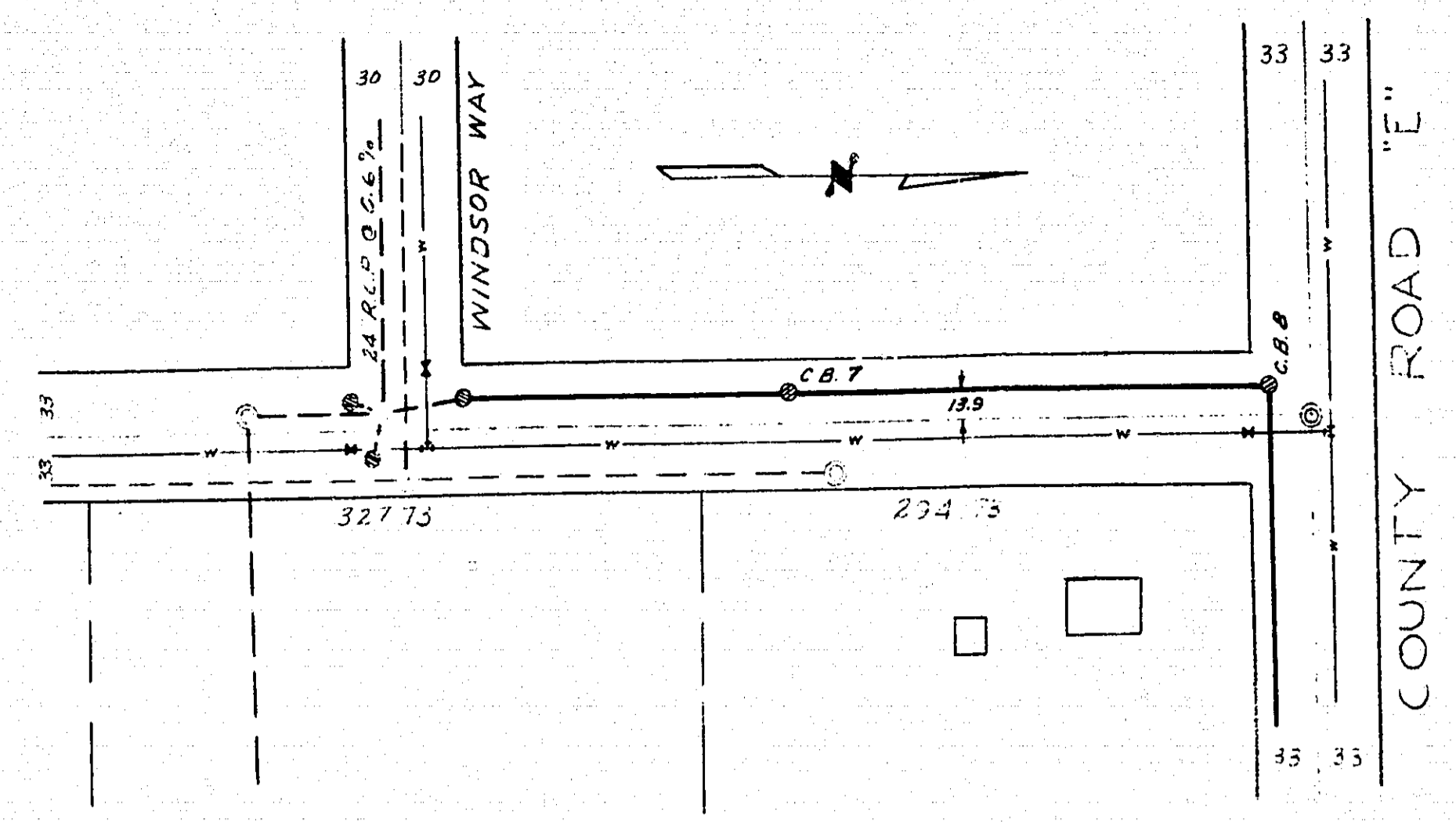
SPECIAL MANHOLE DETAILS (MH NO. 6)

DATE _____ BY _____
 SURVEYED _____
 PLOTTED _____
 NOTE BOOK _____
 NO. _____

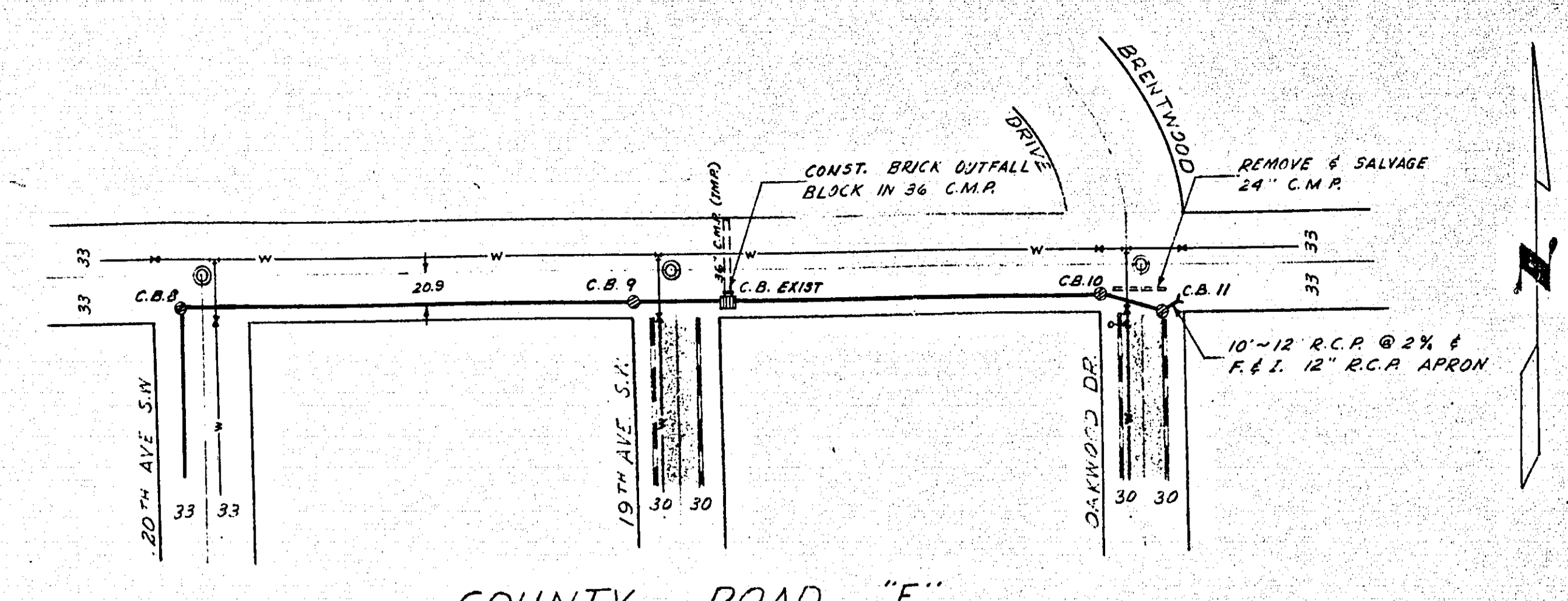
DATE _____ BY _____
 SURVEYED _____
 PLOTTED _____
 NOTE BOOK _____
 NO. _____



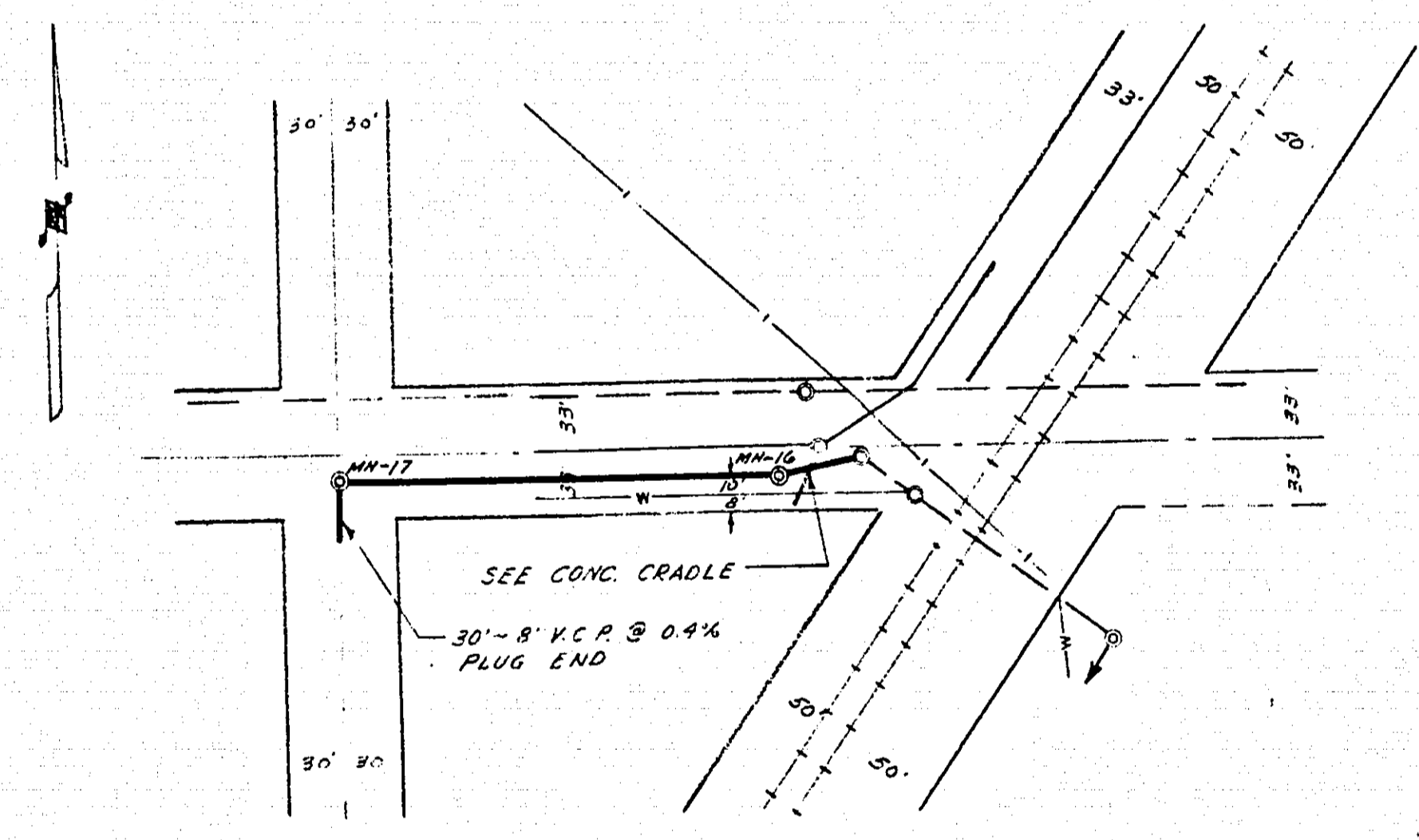
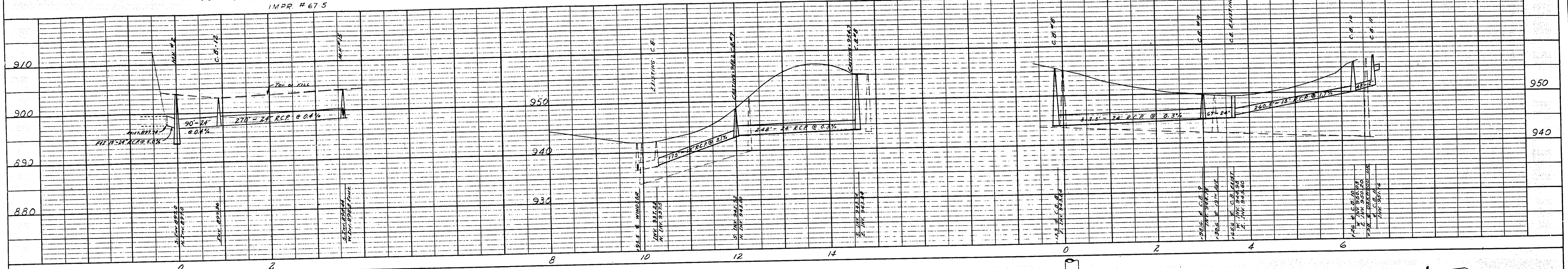
13TH AVE. STORM SEWER OUTLET
 IMPR. #675



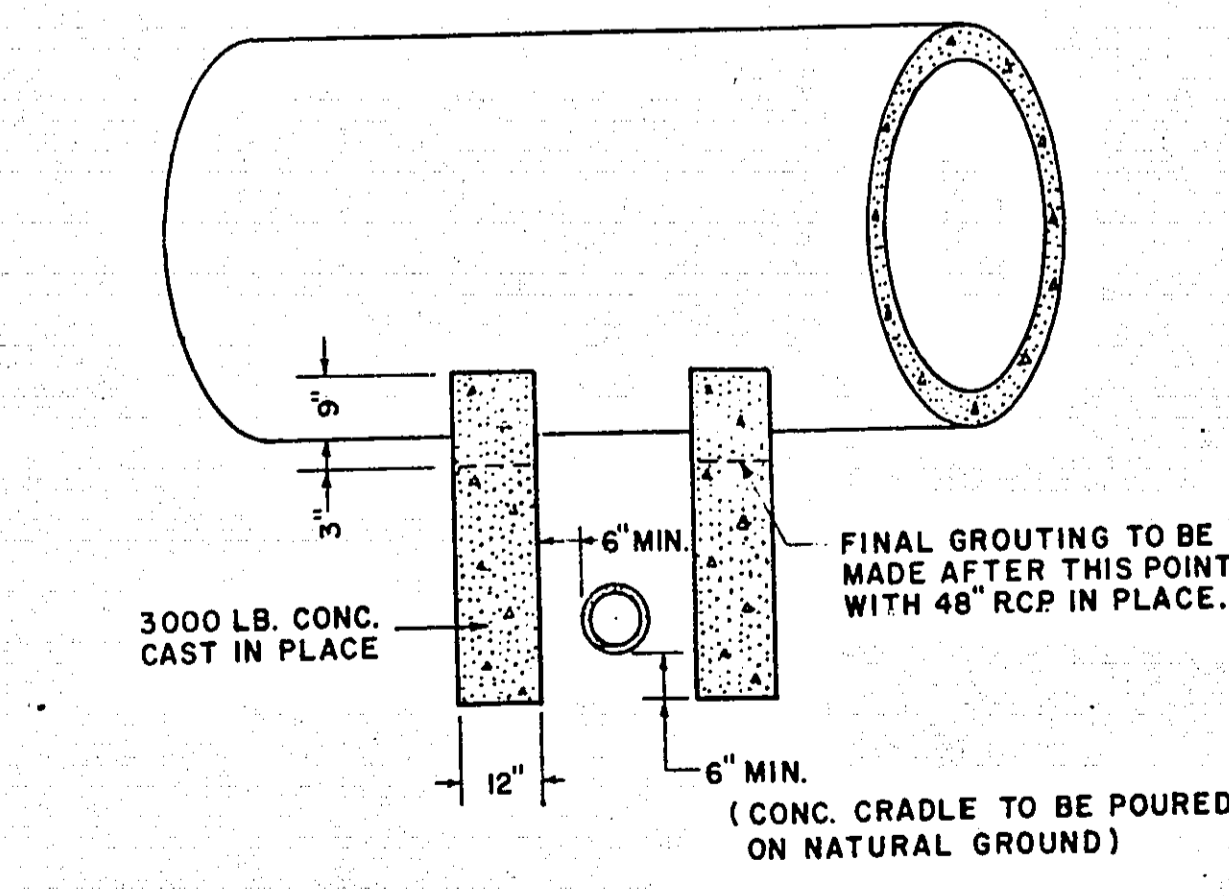
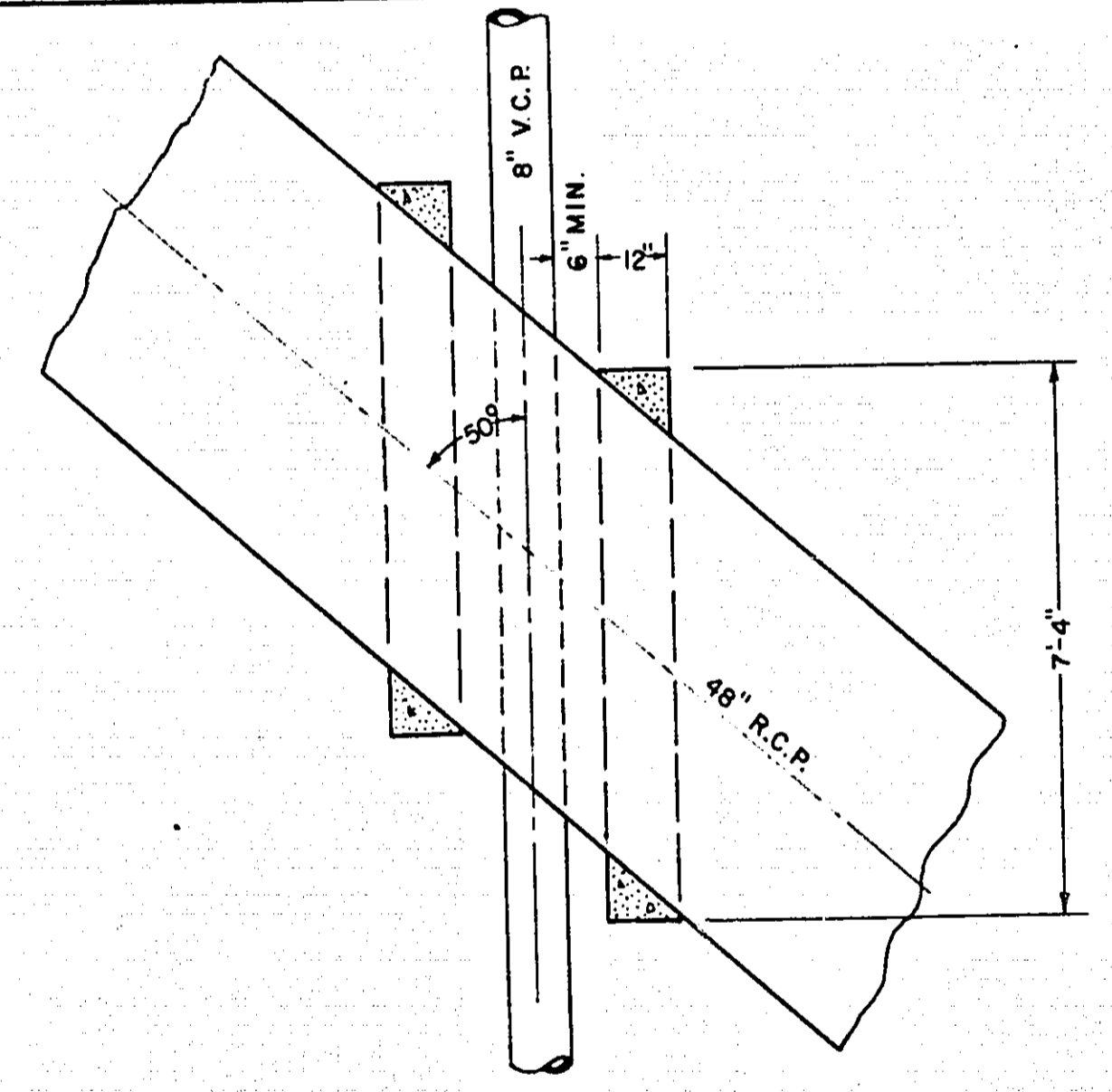
20TH AVENUE S.W.
 IMPR. #675



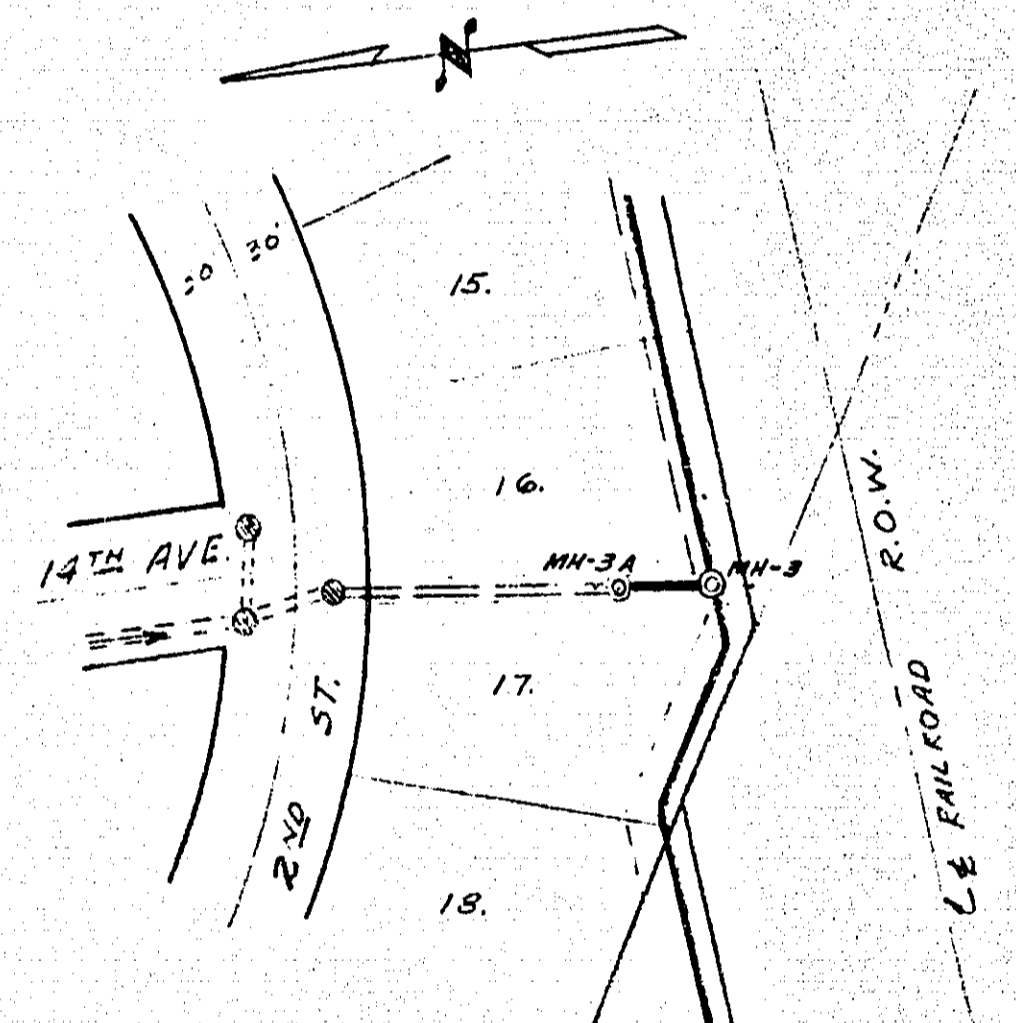
COUNTY ROAD "E"
 IMPR. #675



SILVER LANE
 ST. ANTHONY SANITARY SEWER LINE



CONCRETE CRADLE DETAIL
 SCALE: 1"=3'



HIGHCREST ADD'N
 STORM SEWER OUTLET

