

RAMSEY COUNTY, MINN.

DITCH PLAN & PROFILE

BANISTER ENGINEERING CO.
 ST. PAUL, MINN. JUNE 3, 1967

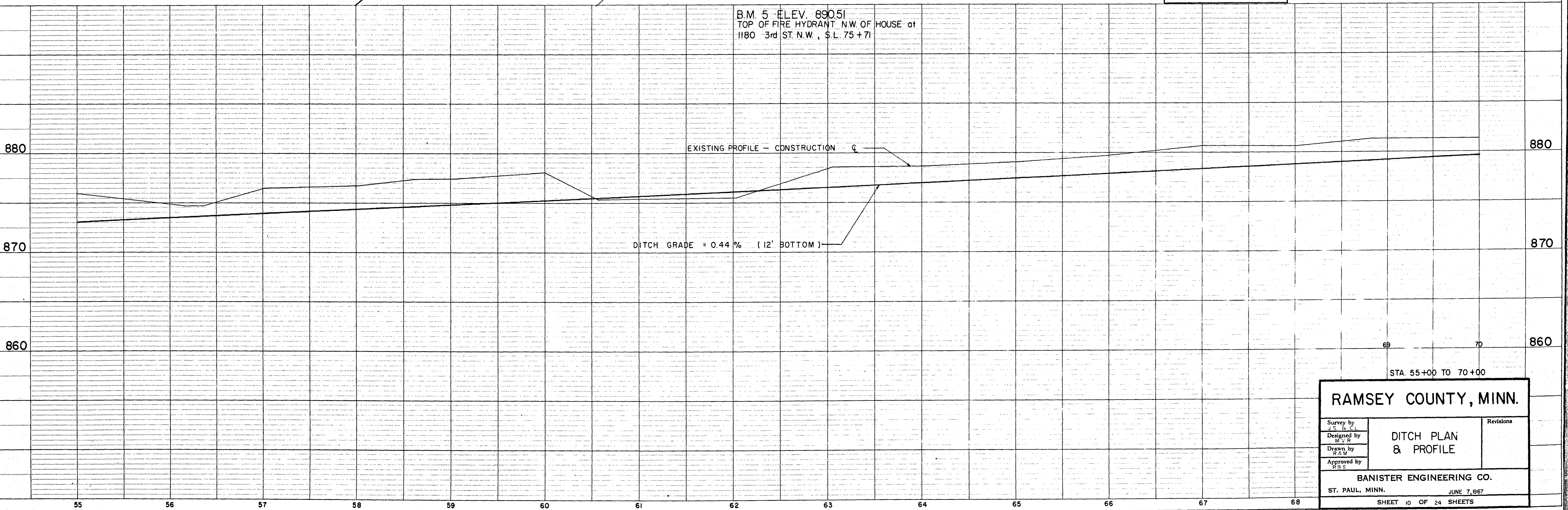
SHEET 9 OF 24 SHEETS

RAMSEY COUNTY, MINN. DITCH 2

Revisions

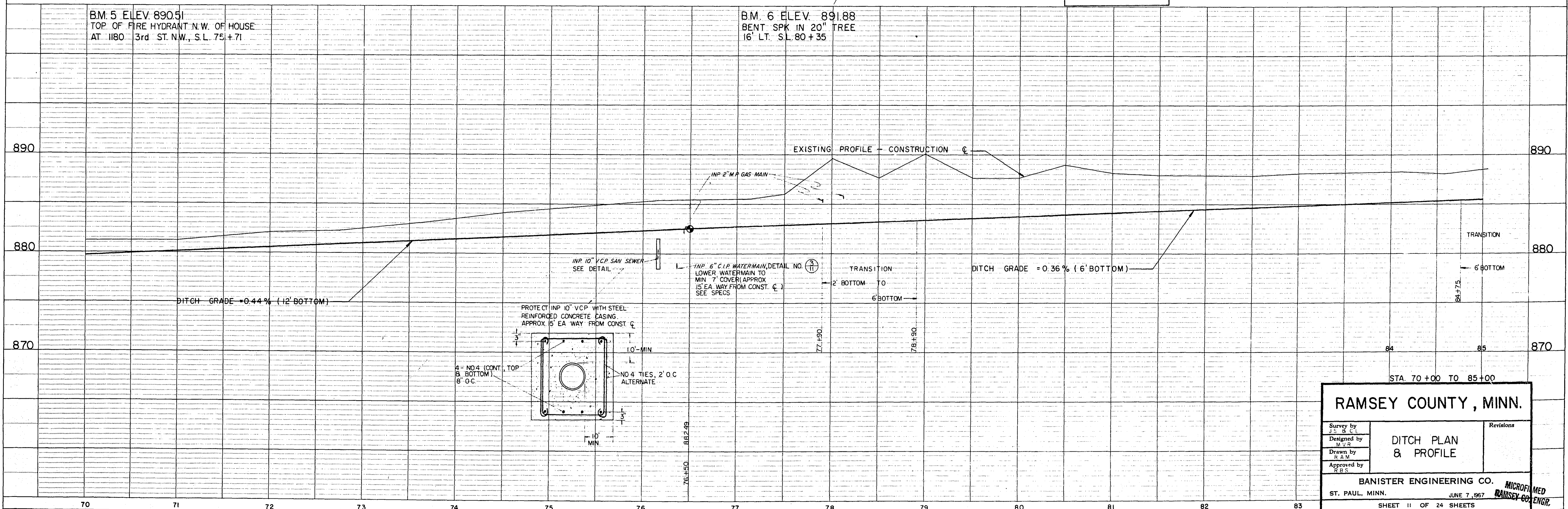
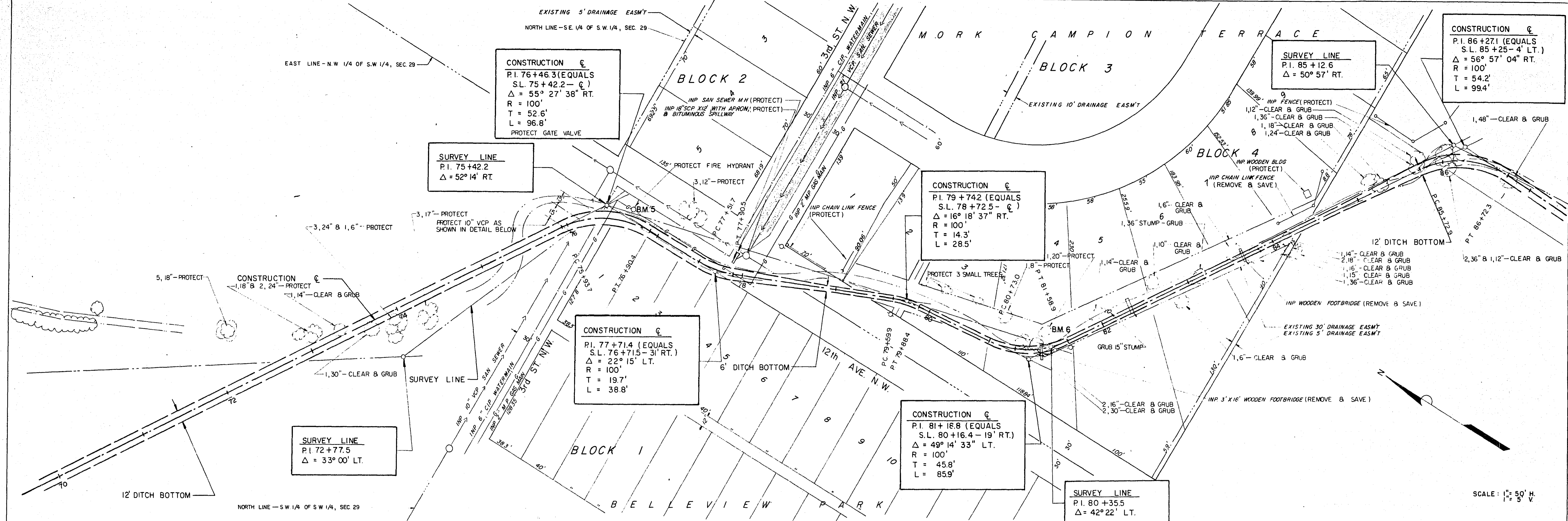
Survey by
 Designed by
 Drawn by
 Approved by

MICROFILMED
 RAMSEY CO. ENGR.



RAMSEY COUNTY, MINN.		Revisions
Survey by J.S.B.C.L.	DITCH PLAN & PROFILE	
Designed by M.V.R.		
Drawn by R.A.M.		
Approved by R.B.S.		
BANISTER ENGINEERING CO.		
ST. PAUL, MINN. JUNE 7, 1967		
SHEET 10 OF 24 SHEETS		

RAMSEY COUNTY, MINN. DITCH 2
 MICROFILMED
 RAMSEY CO. ENGR. R-208



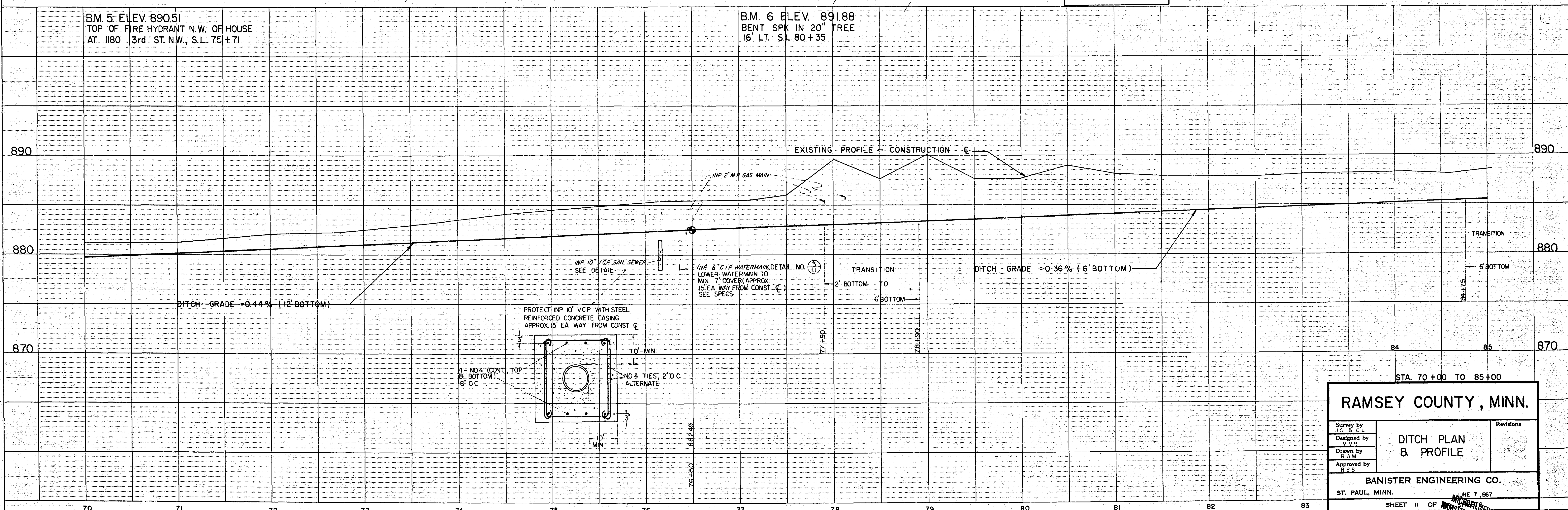
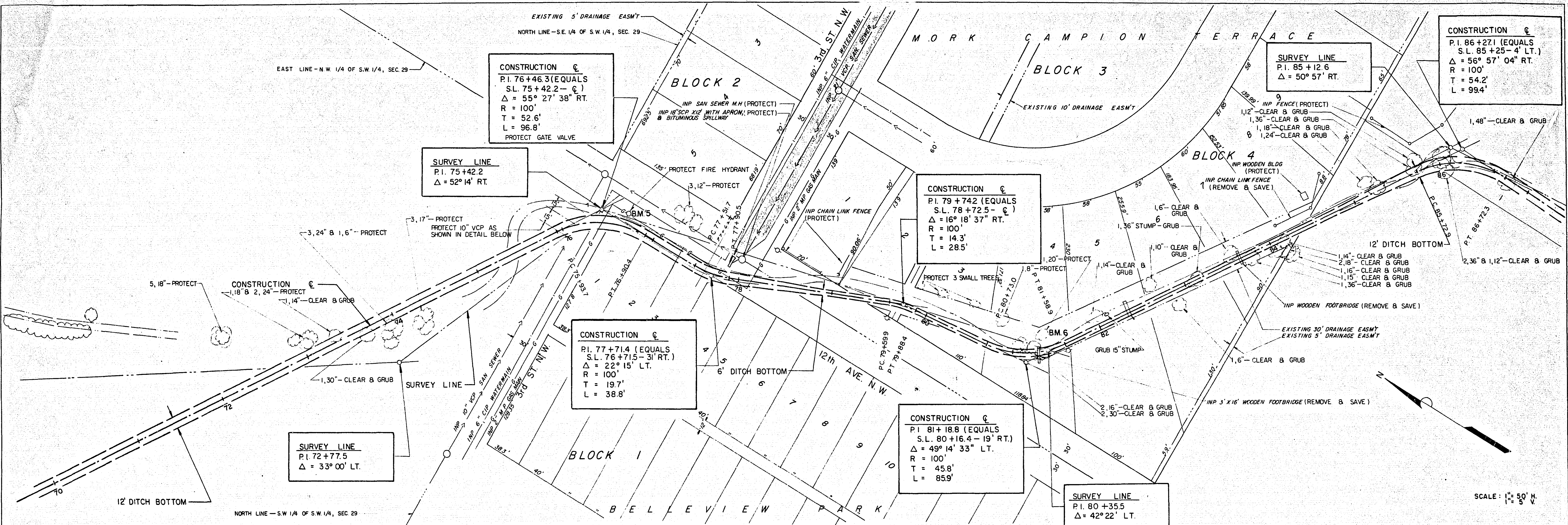
RAMSEY COUNTY, MINN.

Survey by J.S. & C.T.	Revisions
Designed by M.V.S.	
Drawn by R.A.M.	
Approved by R.B.S.	

DITCH PLAN & PROFILE

BANISTER ENGINEERING CO.
 ST. PAUL, MINN. JUN 7, 1967
 SHEET 11 OF 24 SHEETS

MICROFILMED
 RAMSEY CO. ENGR.



RAMSEY COUNTY, MINN.	
Survey by J.S. B.C.L.	Revisions
Designed by M.V.B.	DITCH PLAN & PROFILE
Drawn by R.A.M.	
Approved by R.B.S.	BANISTER ENGINEERING CO.
ST. PAUL, MINN. JUNE 7, 1967	
SHEET 11 OF 11	

RAMSEY COUNTY, MINN. DITCH 2 R-208