

OFFICE OF RAMSEY COUNTY ENGINEER

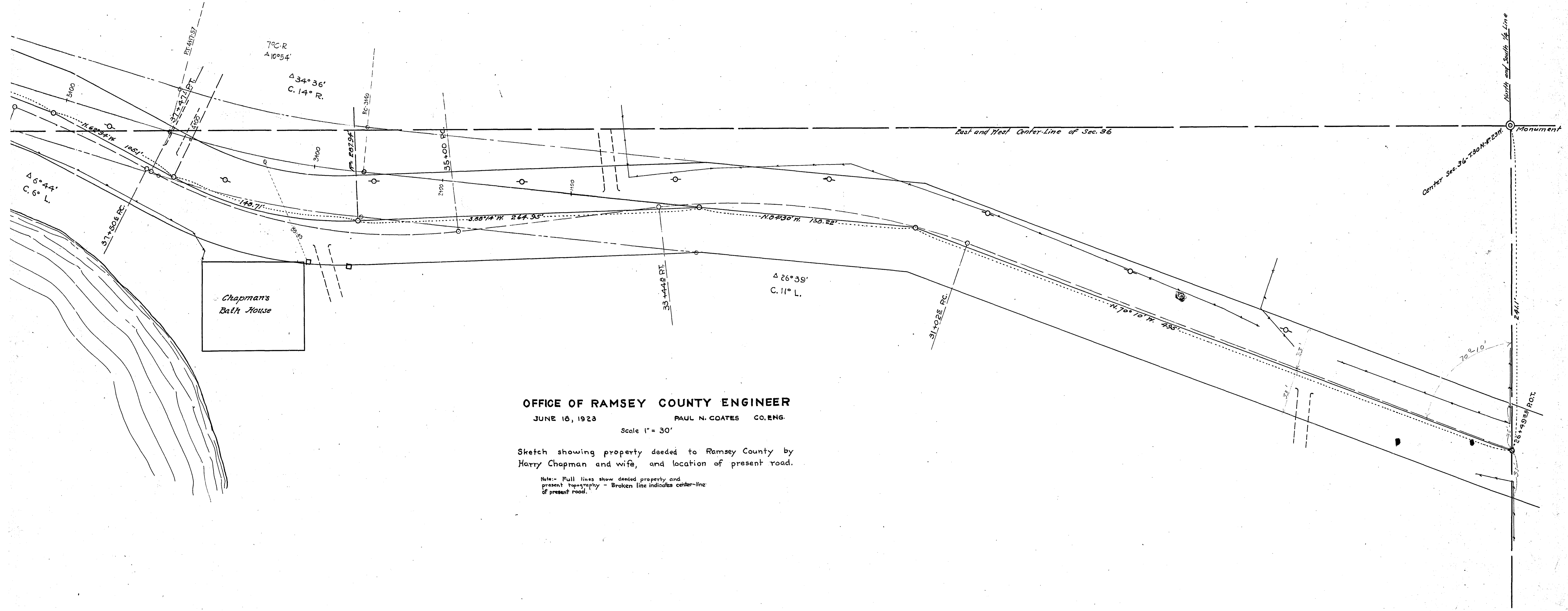
JUNE 16, 1923 PAUL N. COATES CO. ENGR.

Scale 1" = 30'

Sketch showing property deeded to Ramsey County by Harry Chapman and wife, and location of present road.

Note: - Full lines show deeded property and present topography - Broken line indicates center-line of present road.

2-140
 MICROFILMED
 RAMSEY CO. ENGR.



Chapman's
Bath House

OFFICE OF RAMSEY COUNTY ENGINEER

JUNE 16, 1923 PAUL N. COATES CO. ENG.

Scale 1" = 30'

Sketch showing property deeded to Ramsey County by Harry Chapman and wife, and location of present road.

Note: - Full lines show deeded property and present topography - Broken line indicates center-line of present road.

MICROFILMED
RAMSEY CO. ENGR.

State of Minnesota
Date Filed 6/19/23
File No. J