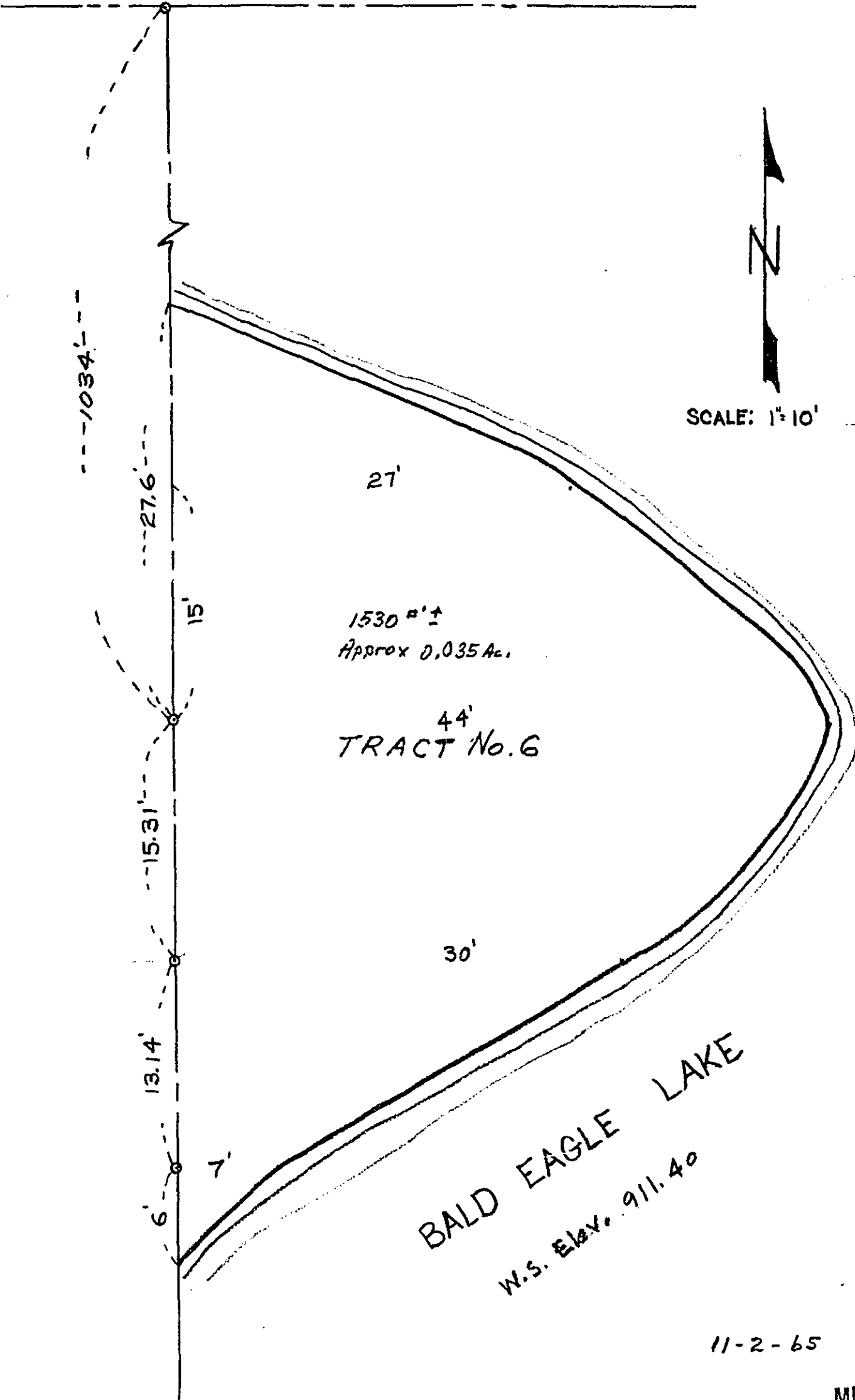


W¹/₄ COR. SEC. 1-30-22



SCALE: 1" = 10'

1530 ±
Approx 0.035 Ac.

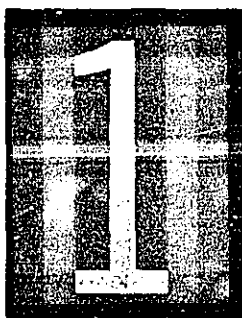
44'
TRACT No. 6

BALD EAGLE LAKE
W.S. Elev. 911.40

11-2-65

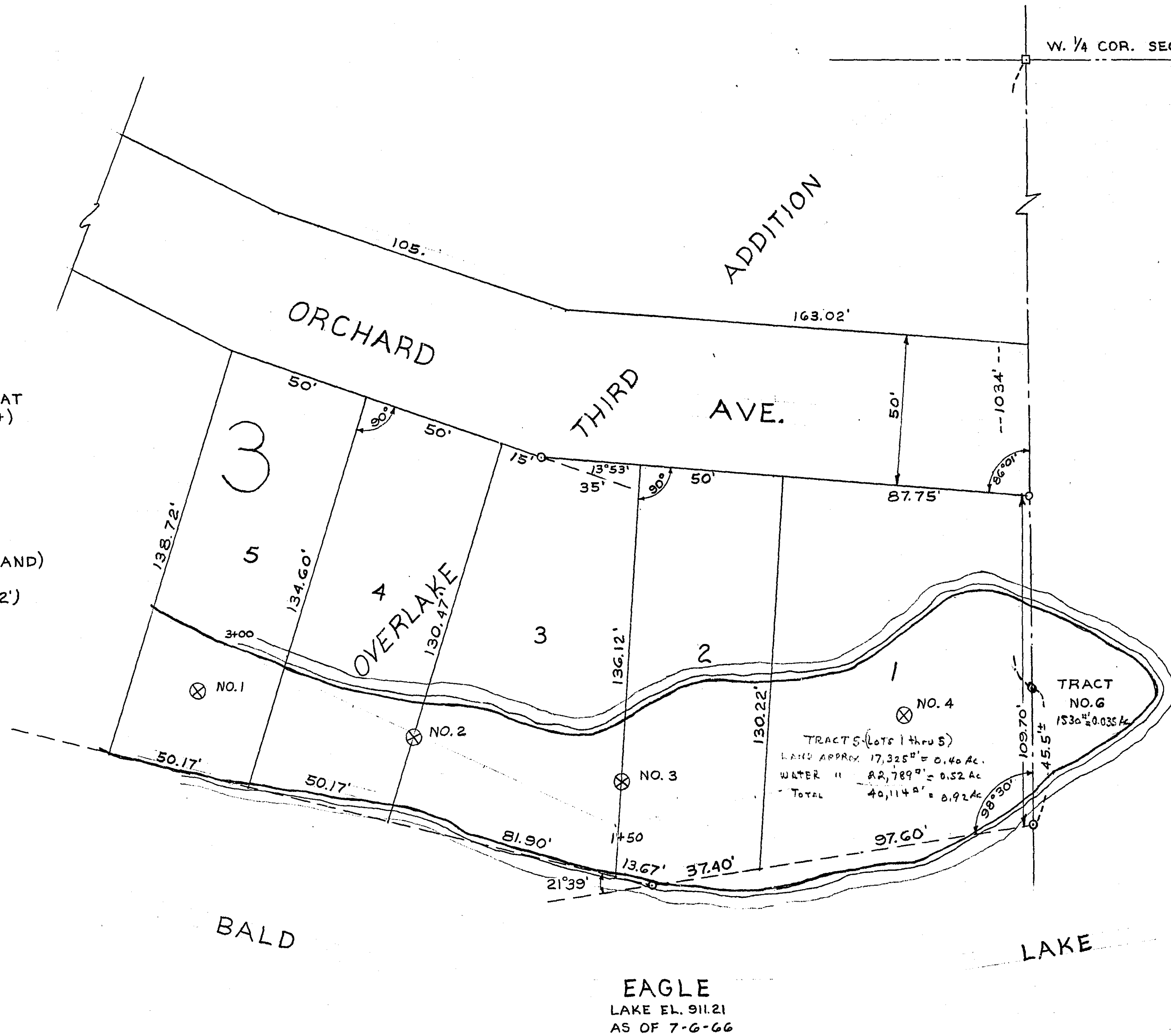
MICROFILMED
RAMSEY CO. ENGR.

R-10



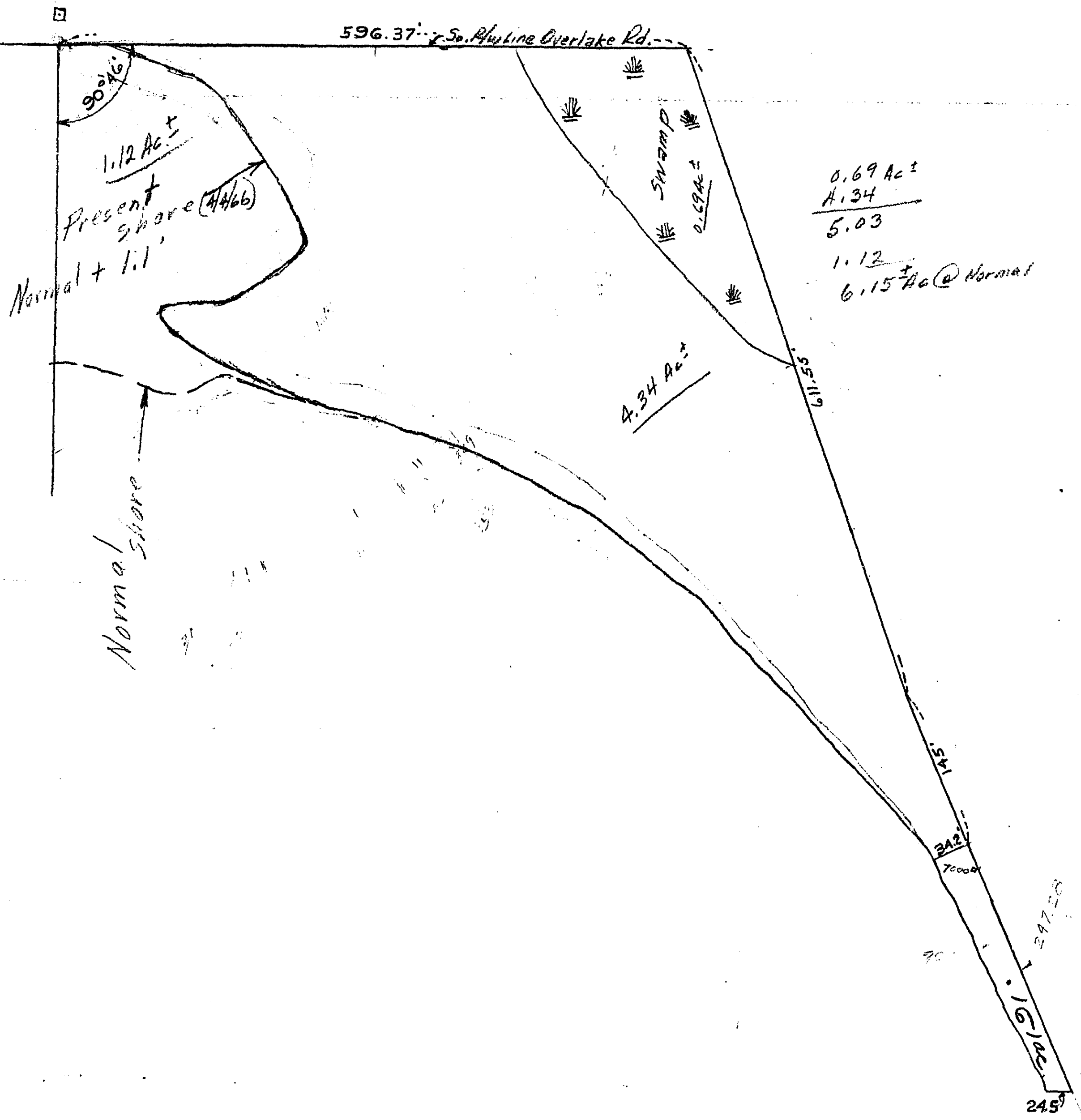
W. 1/4 COR. SEC. 1-30-22

- | | | | |
|-----------|--|-----------|-------------------------------------|
| ⊗ NO. 1 | H ₂ O TO 1' | ⊗ NO. 2 | H ₂ O TO 1' |
| FROM - TO | | FROM - TO | |
| 0' 4' | FIBEROUS PEAT | 0' 1' | TOPSOIL |
| 4' 5' | PEAT/SAND | 1' 2' | SAND/LOAM |
| 5' 6' | SILTY CLAY | 2' 3' | LOAM/SAND |
| 6' 9' | BROWN PLASTIC | 3' 5' | FIBEROUS PEAT |
| 6' 9' | SILTY LOAM | 5' 6' | SAND/GRAVEL |
| | BROWN SLIGHTLY PLASTIC | 6' 7' | SILTY / PEAT |
| 9' 10.5' | LOAM / SAND | 7' 16' | SAND/GRAVEL-PEAT (PUSH ROD TO 16'+) |
| | NON-PLASTIC SAND / GRAVEL (PUSH ROD VERY FIRM REFUSAL) | | |
| ⊗ NO. 3 | H ₂ O TO 1' | ⊗ NO. 4 | H ₂ O TO 2' |
| FROM - TO | | FROM - TO | |
| 0' 2' | LOAM/SAND | 0' 1' | TOPSOIL (LOAM/SAND) |
| 2' 3' | SILTY LOAM | 1' 8' | SAND/GRAVEL (PUSH ROD TO 12') |
| 3' 4' | SAND/GRAVEL | | |
| 4' 4.5' | FIBEROUS PEAT | | |
| 4.5' 8' | SAND / GRAVEL (PUSH ROD TO 8' SOLID) | | |



MICROFILMED
RAMSEY CO. ENGR.

R-10



$0.69 \text{ Ac} \pm$
 1.34

 5.03
 1.12
 $6.15 \text{ Ac} \pm \text{ @ Normal}$

| | |
|--------|--------|
| 1.26 | 640 |
| $.69$ | 1.95 |
| <hr/> | <hr/> |
| 1.95 | 4.45 |



BALD EAGLE LAKE
 SCALE:
 1" = 100'

MICROFILMED
 RAMSEY CO. ENGR.

R-10