

OFFICE OF
RAMSEY COUNTY ENGINEER
DEANE R. ANKLAN
TOPOGRAPHICAL MAP

IN SECTION 14, T.29N., R.22W.
JUNE 1955 SCALE 1" = 100'

NOTE: Layout shown of Golf Course is approximate.
See staking plans for accurate locations.

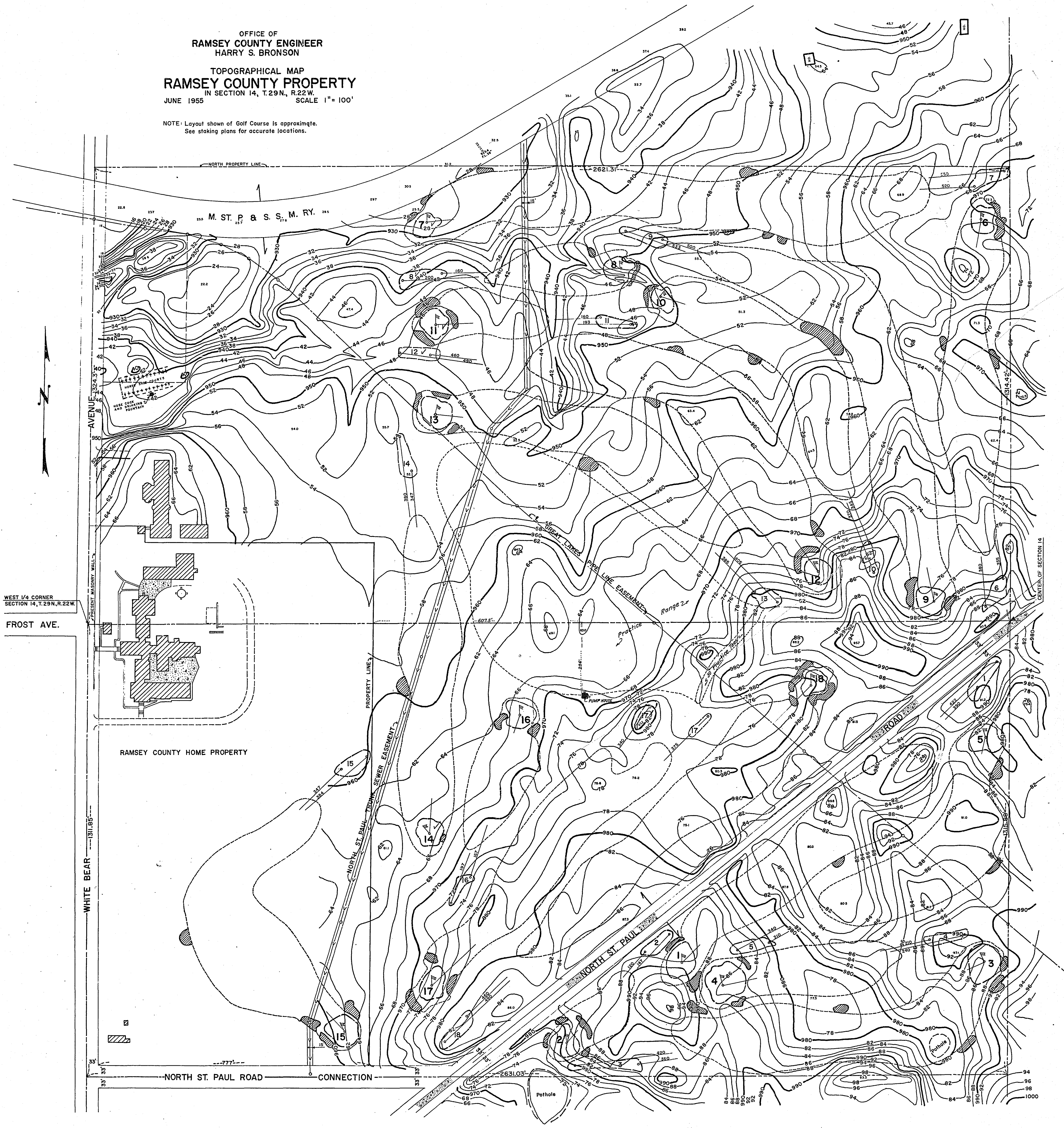


OFFICE OF
RAMSEY COUNTY ENGINEER
HARRY S. BRONSON

TOPOGRAPHICAL MAP
RAMSEY COUNTY PROPERTY
IN SECTION 14, T.29N., R.22W.
JUNE 1955 SCALE 1" = 100'

NOTE: Layout shown of Golf Course is approximate.
See staking plans for accurate locations.

30X



WEST 1/4 CORNER
SECTION 14, T.29N., R.22W.
FROST AVE.

RAMSEY COUNTY HOME PROPERTY