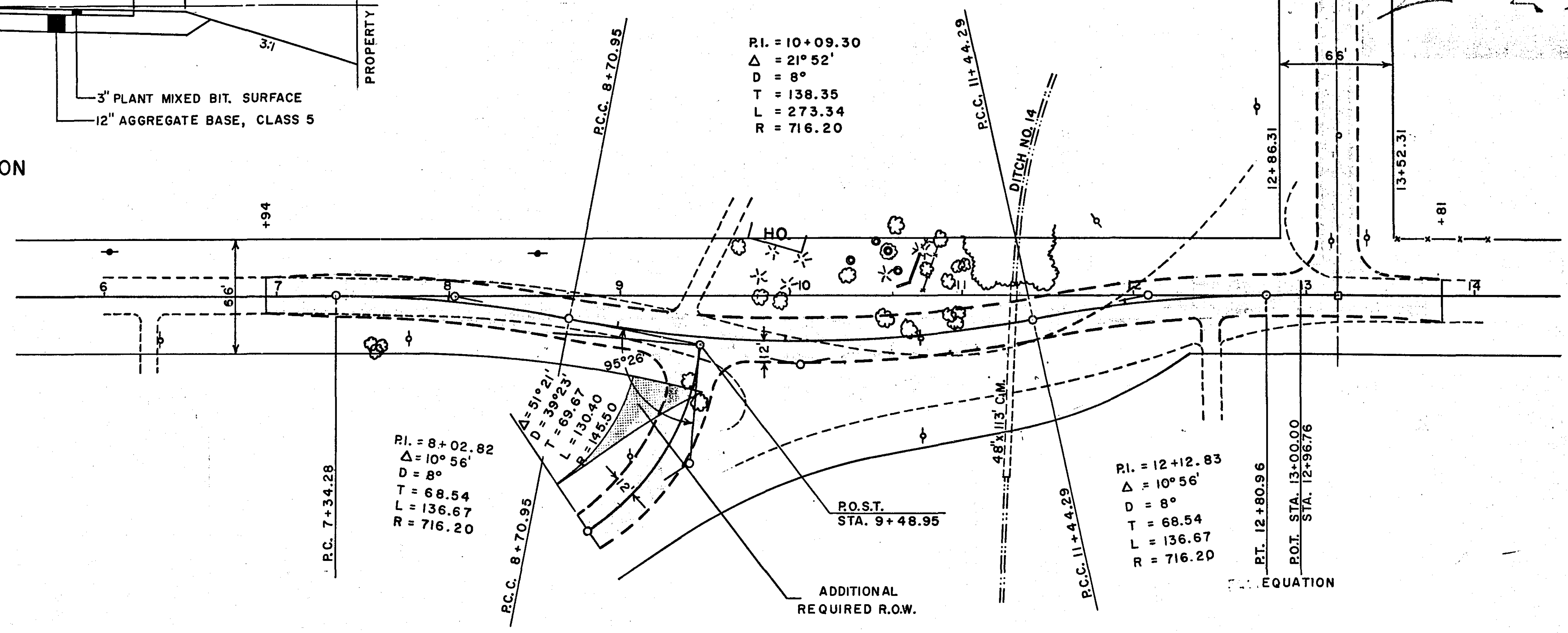
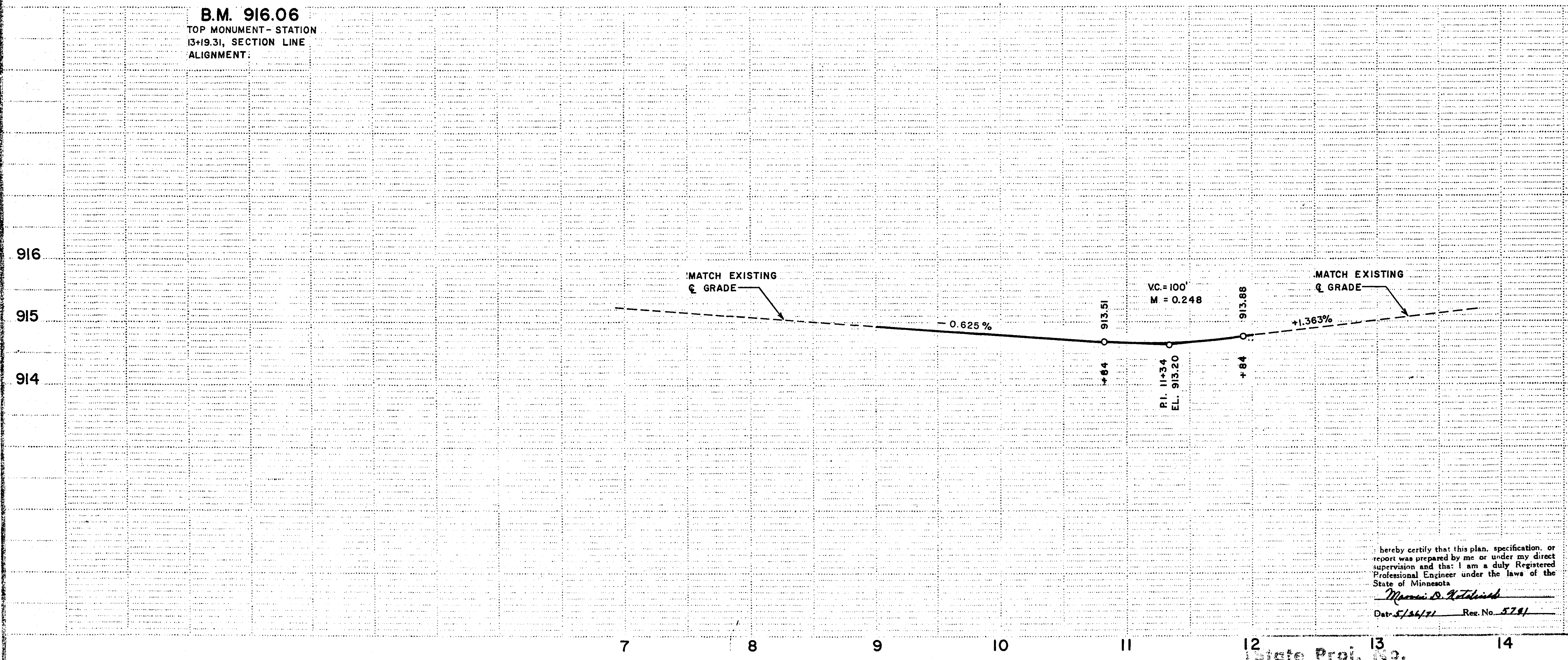


TYPICAL SECTION



B.M. 916.06
TOP MONUMENT - STATION
13+19.31, SECTION LINE
ALIGNMENT:



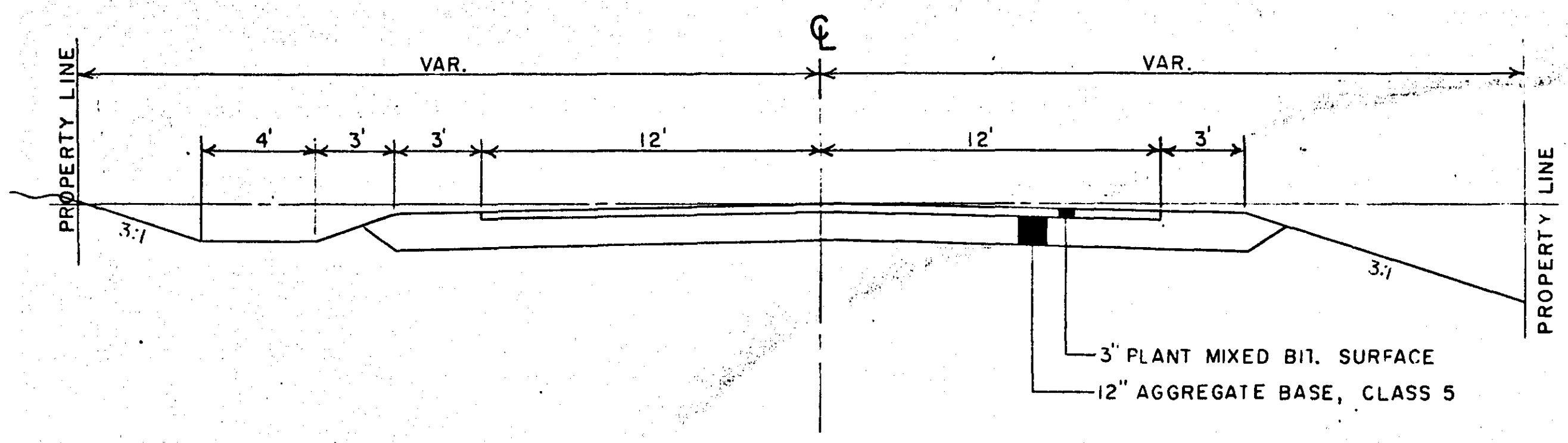
RECOMMENDED FOR APPROVAL	DATE
DIRECTOR OF SAFETY	
RECOMMENDED FOR APPROVAL	DATE
<i>Max. J. [Signature]</i>	5/24/71
RECOMMENDED FOR APPROVAL	DATE
CONSTRUCTION ENGINEER	
RECOMMENDED FOR APPROVAL	DATE
RECOMMENDED FOR APPROVAL	DATE
APPROVED	DATE
COUNTY ENGINEER	

RAMSEY COUNTY ENGINEERS DEPT.
DEANE R. ANKLAN
COUNTY ENGINEER
REVISION OF KOEHLER ROAD -
EDGERTON INTERSECTION

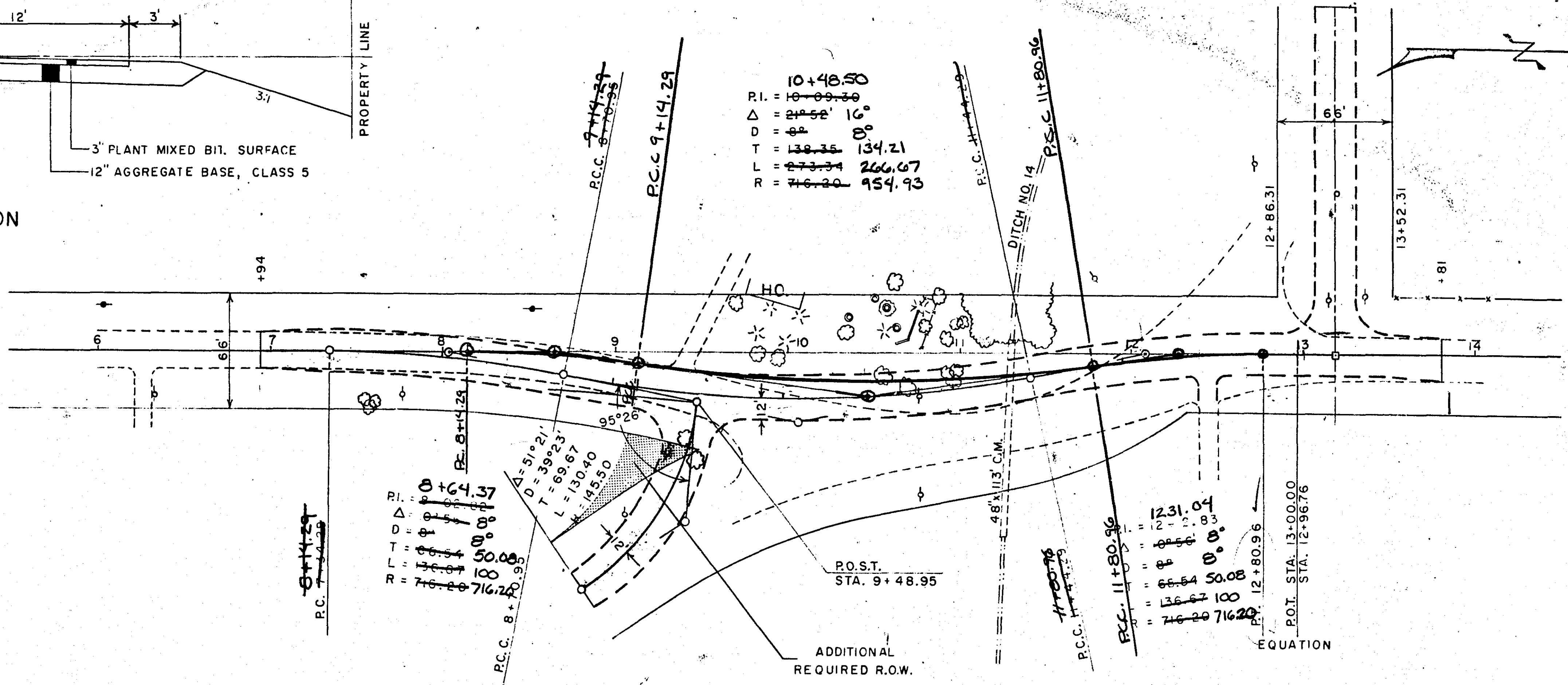
DRAWN: *D. A. S.*
DATE: 5-23-71

I hereby certify that this plan, specification, or report was prepared by me or under my direct supervision and that I am a duly Registered Professional Engineer under the laws of the State of Minnesota.
Max. J. [Signature]
Date: 5/24/71 Reg. No. 5781

ENV. 11
1 OF 2



TYPICAL SECTION



STATION	TOP MONUMENT STATION	3/8\"/>
916		
915		
914		

RAMSEY COUNTY ENGINEERS DEPT.
 DEANE R. ANKLAN
 COUNTY ENGINEER

REVISION OF KOEHLER ROAD -
 EDGERTON INTERSECTION

DRAWN BY: *M. B. Holland*
 DATE: 5-23-71

ENV 11
2 of 2

SINGLE PLAN - DOTTED
 M. A. ROGEE CO. - MINNEAPOLIS - ST. PAUL