

CONVENTIONAL SIGNS

STATE LINE	.....	TIMBER	.....
COUNTY LINE	.....	BRUSH	.....
TOWNSHIP OR RANGE LINE	.....	ORCHARD	.....
SECTION LINE	.....	ROCK LEDGE	.....
QUARTER LINE	.....	SAND	.....
SIXTEENTH LINE	.....	EDGE OF CUT	.....
RIGHT-OF-WAY LINE	.....	TOE OF EMBANKMENT	.....
PROPERTY LINE (Except Land Lines)	.....	CATCH BASIN	.....
VACATED PLATTED PROPERTY	.....	MANHOLE	.....
CORPORATE OR CITY LIMITS	.....	FIRE HYDRANT	.....
TRUNK HIGHWAY CENTER LINE	.....	ARC LAMP	.....
RETAINING WALL	.....	OTHER LAMPS (State Kind)	.....
STEAM RAILROAD	.....	RAILROAD CROSSING SIGN	.....
ELECTRIC RAILROAD	.....	RAILROAD CROSSING BELL	.....
RAILROAD RIGHT-OF-WAY LINE	.....	ELECTRIC WARNING SIGN	.....
CREEK	.....	CROSSING GATE	.....
RAPIDS OR WATERFALL	.....	CATTLE GUARD	.....
DRY RUN	.....	OVERHEAD (Highway Over)	.....
DRAINAGE DITCH	.....	UNDERPASS (Highway Under)	.....
HIGH TENSION LINE	.....	ABUTMENT, WALL & PIER	.....
POWER POLE LINE	.....	BRIDGE	.....
TELEPHONE OR TELEGRAPH LINE	.....	BUILDING (One Story Frame)	.....
CULVERT	.....	F-FRAME C-CONCRETE	.....
DROP INLET	.....	S-STONE T-TILE	.....
GUARD RAIL	.....	B-BRICK ST-STUCCO	.....
WIRE FENCE	.....	IRON PIPE	.....
RAILROAD SNOW FENCE	.....	STONE MONUMENT	.....
BOARD OR HIGHWAY SNOW FENCE	.....	WOOD STAKE OR NAIL	.....
STONE WALL OR FENCE	.....	MEANDER CORNER	.....
HERDGE	.....		
WATER PIPE	.....		
SEWER PIPE	.....		
DRAIN TILE	.....		
GRAVEL PIT	.....		
SAND PIT	.....		
CLAY PIT	.....		
ROCK QUARRY	.....		
SPRINGS	.....		
MARSH	.....		
TRUNK HIGHWAY R/W	.....		
RAILROAD R/W	.....		
PRESENT ROAD R/W	.....		

STATE OF MINNESOTA  
DEPARTMENT OF HIGHWAYS  
CONSTRUCTION PLAN FOR PAVING  
**TRUNK HIGHWAY NO. 12=104**  
BETWEEN RICE STREET AND DALE STREET

From A POINT 60' WEST OF THE NE. CORNER OF THE SE 1/4 SECT. 36, T. 29N., R. 23W. To A POINT 7.5' EAST OF THE NE. CORNER OF THE SE 1/4 SECT. 36, T. 29N., R. 23W.

MINNESOTA NO. SEC. STATE PROJECT NO. 6208-09

GROSS LENGTH	..... FEET	..... MILES	GROSS LENGTH	..... 5227 FEET	..... 0.99 MILES
BRIDGES-LENGTH	..... FEET	..... MILES	BRIDGES-LENGTH	..... 0 FEET	..... 0.00 MILES
EXCEPTIONS-LENGTH	..... FEET	..... MILES	EXCEPTIONS-LENGTH	..... 0 FEET	..... 0.00 MILES
NET LENGTH	..... FEET	..... MILES	NET LENGTH	..... 5227 FEET	..... 0.99 MILES

SCALES PLAN 1 inch = 40 Feet  
PROFILE Horz. 1 inch = 40 Feet. Vert. 1 inch = 6 Feet

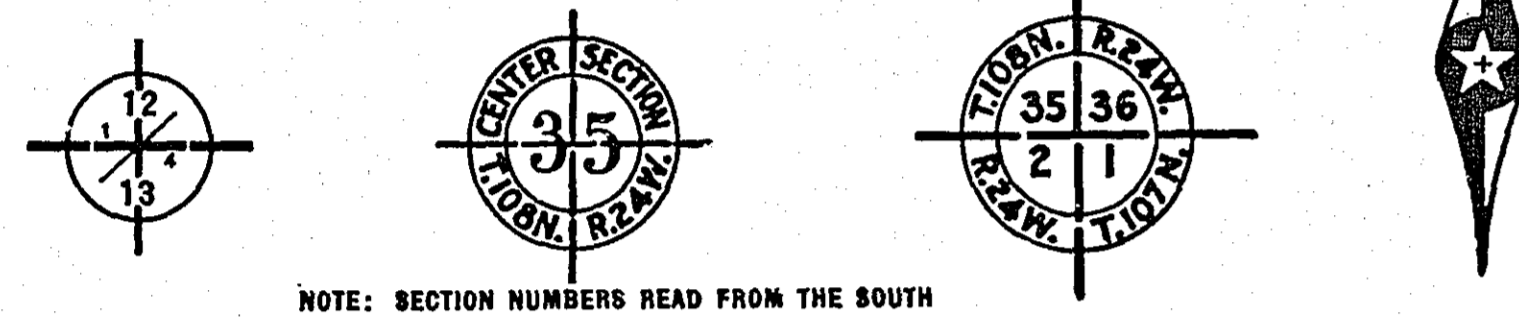
LAYOUT  
Scale 1 inch = 1200 Feet

SPECIFICATIONS

The Specifications for Highway Construction dated July 1, 1947, and submitted for approval by the Division Engineer of the Public Roads Administration Oct. 15, 1947 shall govern.

INDEX

SHEET NO. 1	TITLE SHEET
2 & 3	TYPICAL SECTIONS, DETAILS, AND ESTIMATE
4	SAFETY ISLAND DETAILS
5	CITY OF ST. PAUL DETAIL PLATES
6	CITY OF ST. PAUL STREET SIGNAL DETAILS
7 THRU 11	PLANS AND PROFILES

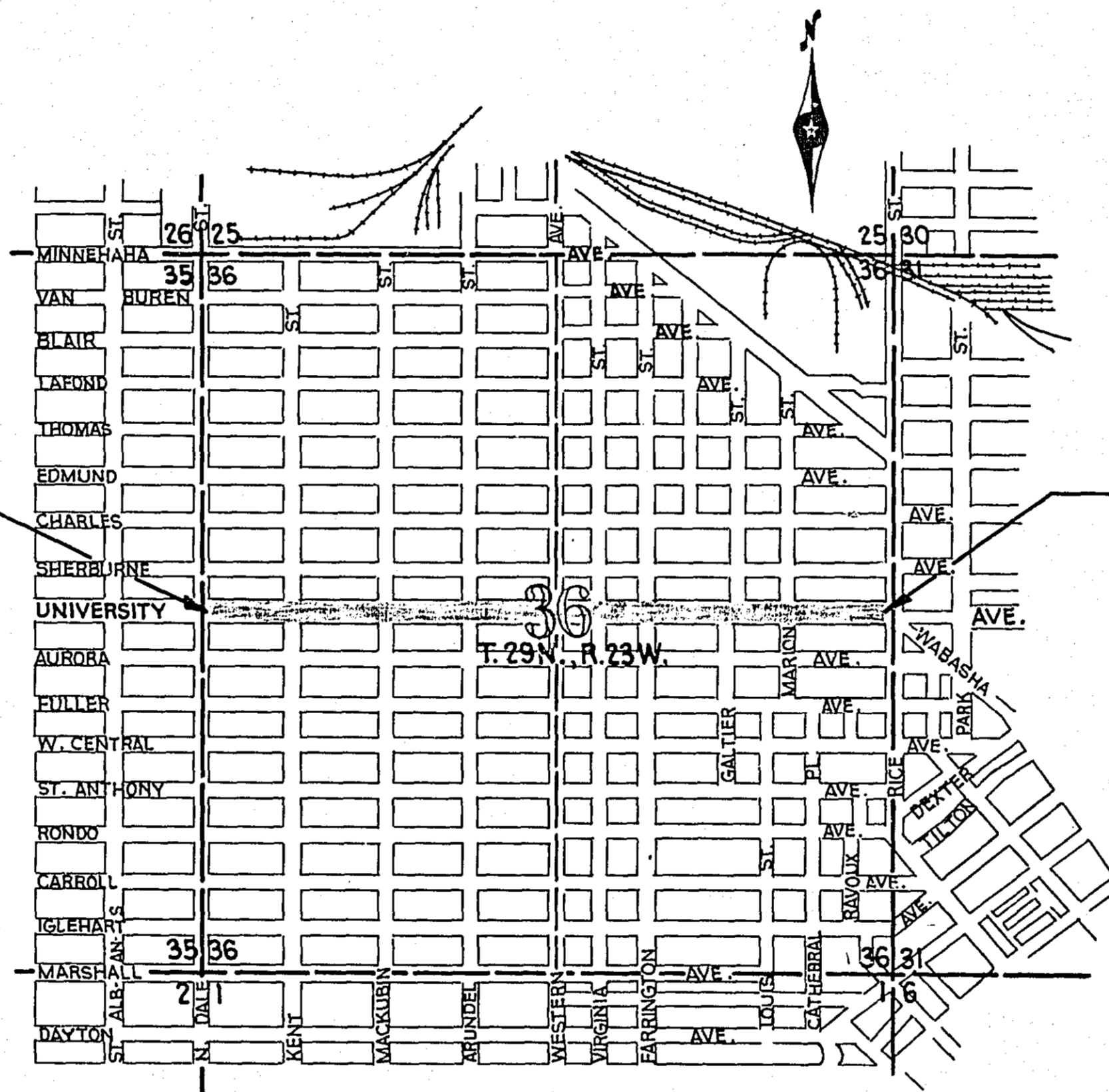


PIT DATA

PIT NO. ....	Located in .....
.....	Dead Haul .....
PIT NO. ....	Located in .....
.....	Dead Haul .....
PIT NO. ....	Located in .....
.....	Dead Haul .....
PIT NO. ....	Located in .....
.....	Dead Haul .....

END S.P. 6208-09 (12=104)

STATION 52+56.95



BEGIN S.P. 6208-09 (12=104)

STATION 0+30

Right of Way Approval S. Rex Green 6-7-51  
ENGINEER OF LANDS & RIGHT OF WAY

Planned By J. A. Holmboe 5-10-51  
PRINCIPAL ASSISTANT CIVIL ENGINEER, CITY OF ST. PAUL

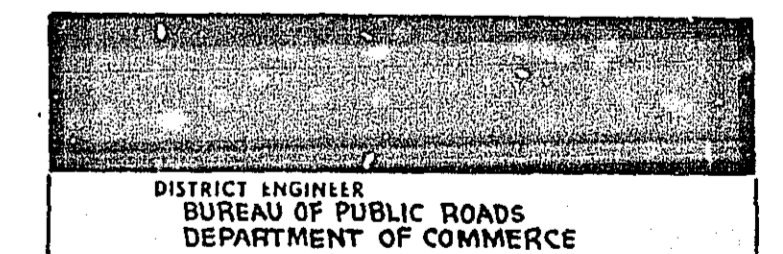
Recommended for Approval George M. Shepard 5/10 1951  
CHIEF ENGINEER, CITY OF ST. PAUL

Recommended for Approval \_\_\_\_\_ 19\_\_\_\_  
DISTRICT ENGINEER

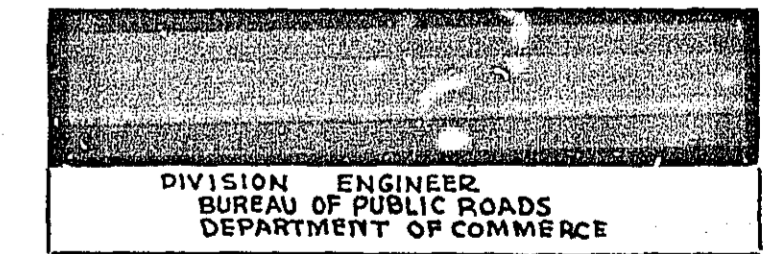
Recommended for Approval W. J. Peterson 6-5 1951  
ENGINEER OF PLANS & SURVEYS

Approved 6-6-1951 O. K. Kipp  
CHIEF ENGINEER

RECOMMENDED FOR APPROVAL



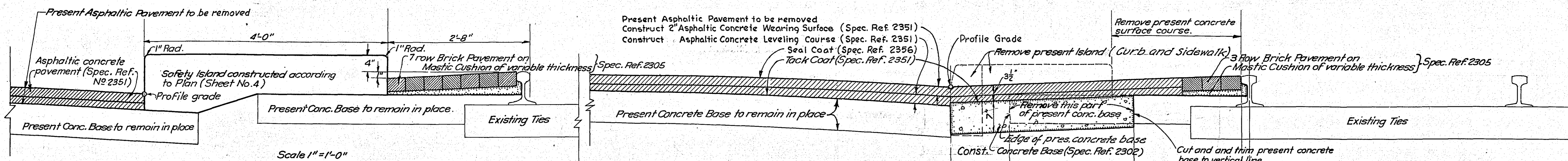
APPROVED



I HEREBY CERTIFY THAT THIS PLAN WAS PREPARED BY ME OR UNDER MY DIRECT SUPERVISION AND THAT I AM A DULY REGISTERED PROFESSIONAL ENGINEER UNDER THE LAWS OF THE STATE OF MINNESOTA.  
J. A. Holmboe  
May 10-51 No. 866

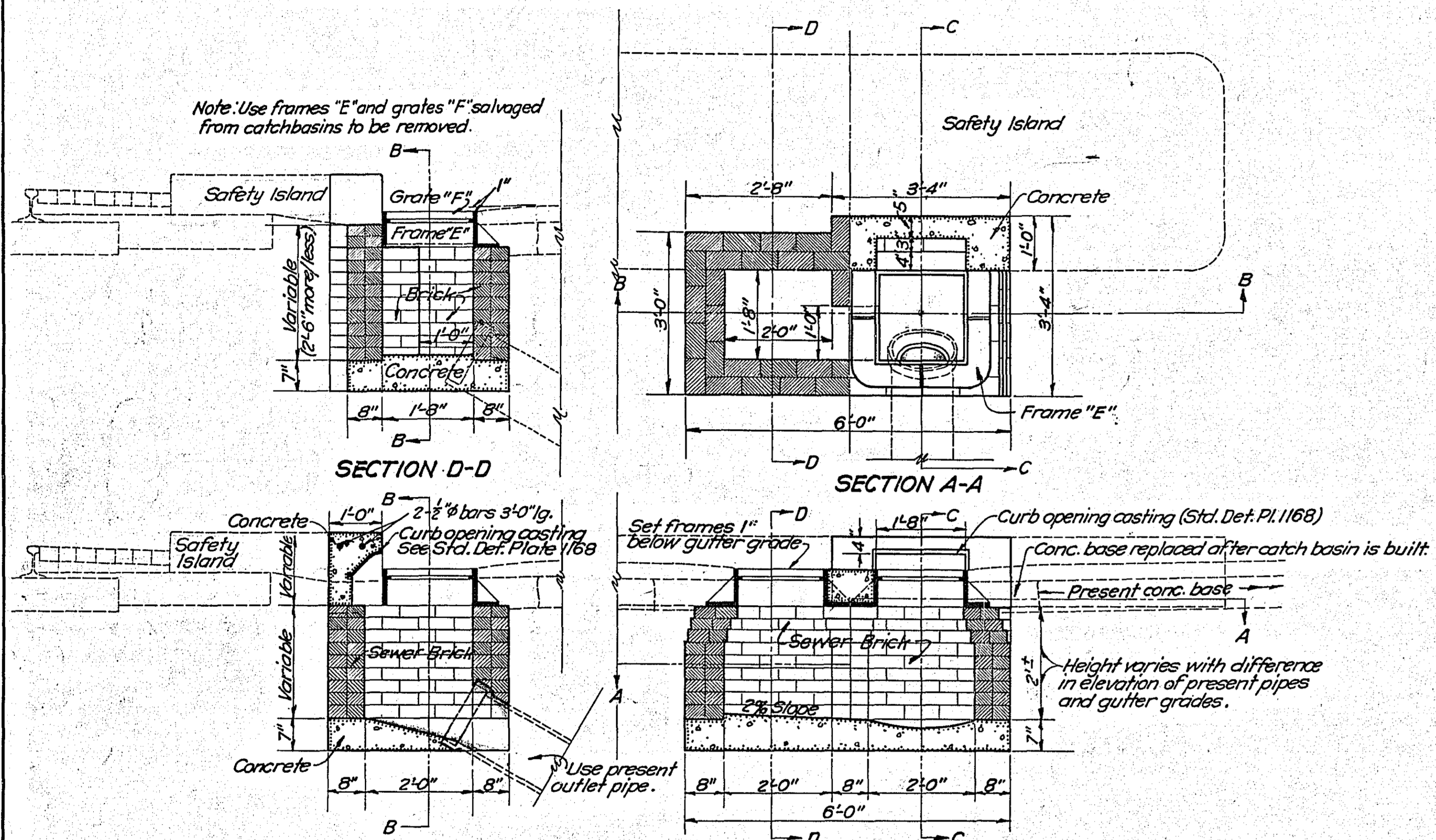
DESIGN SQUAD

State Proj. No. 6208-09 (12=104) Sheet No. 1 of 11 Sheets



TYPICAL PART-SECTION - PAVING AT SAFETY ISLANDS BETWEEN DALE ST. AND RICE ST.

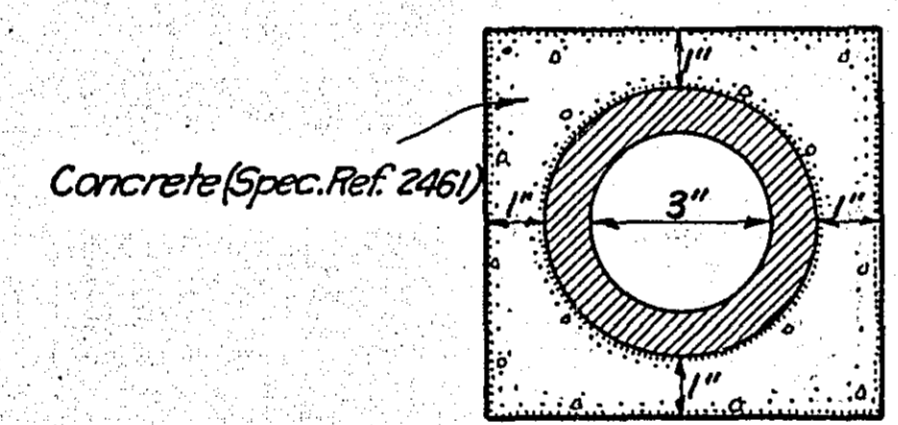
TYPICAL PART-SECTION - UNIVERSITY AVE. FROM DALE ST. TO RICE ST.



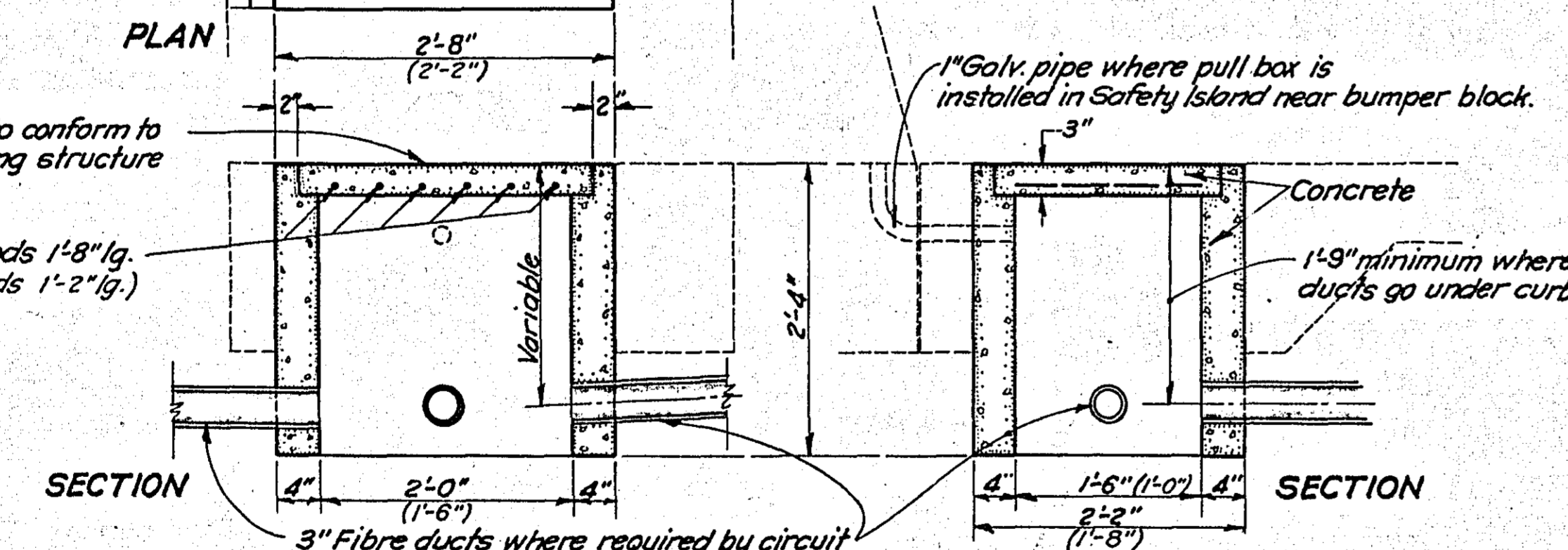
SECTION C-C

SECTION B-B

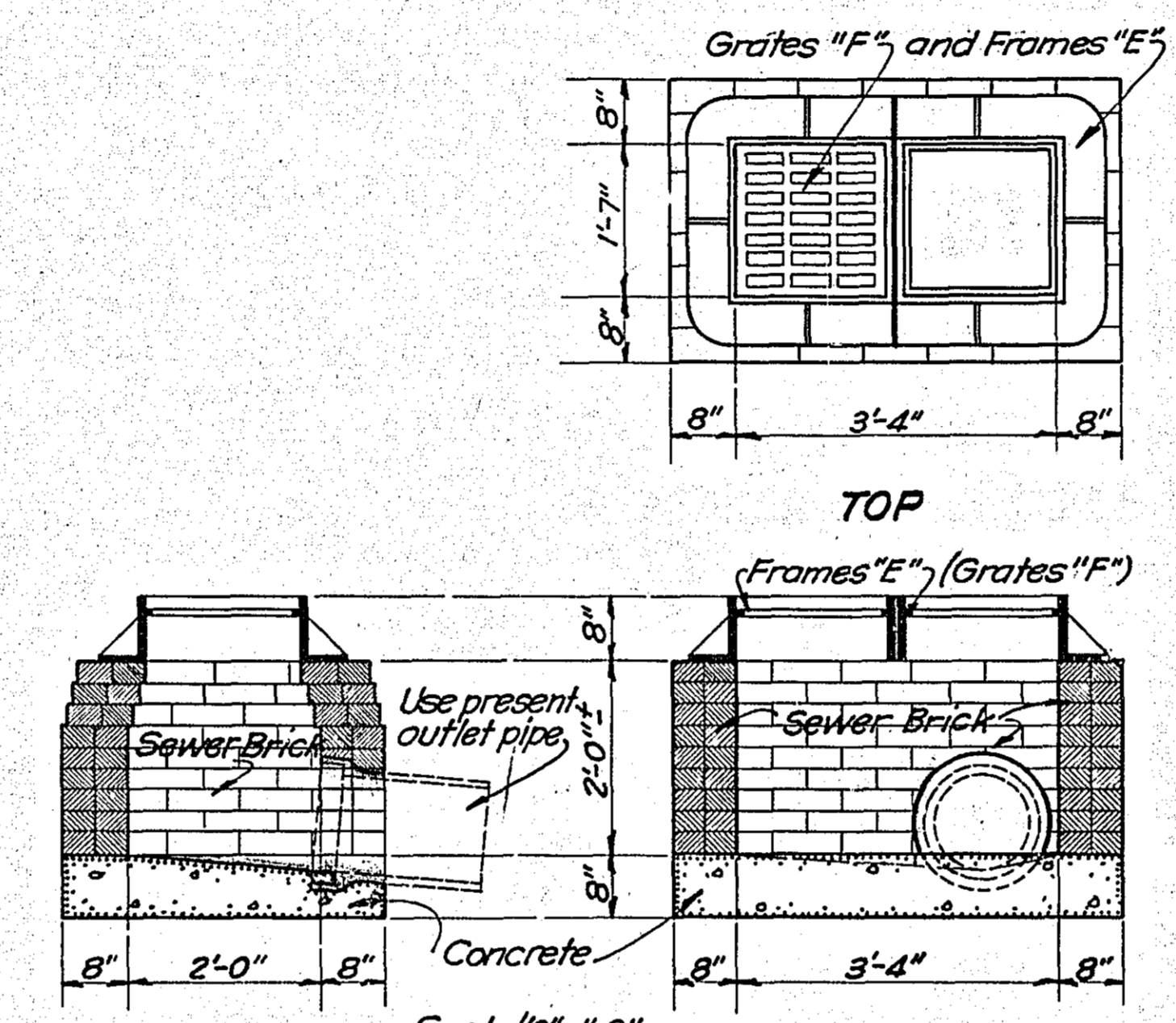
SPECIAL 6-AAA CATCH BASIN (Locate Catch Basins at present outlet pipes and reuse castings E and F taken from present catchbasins)



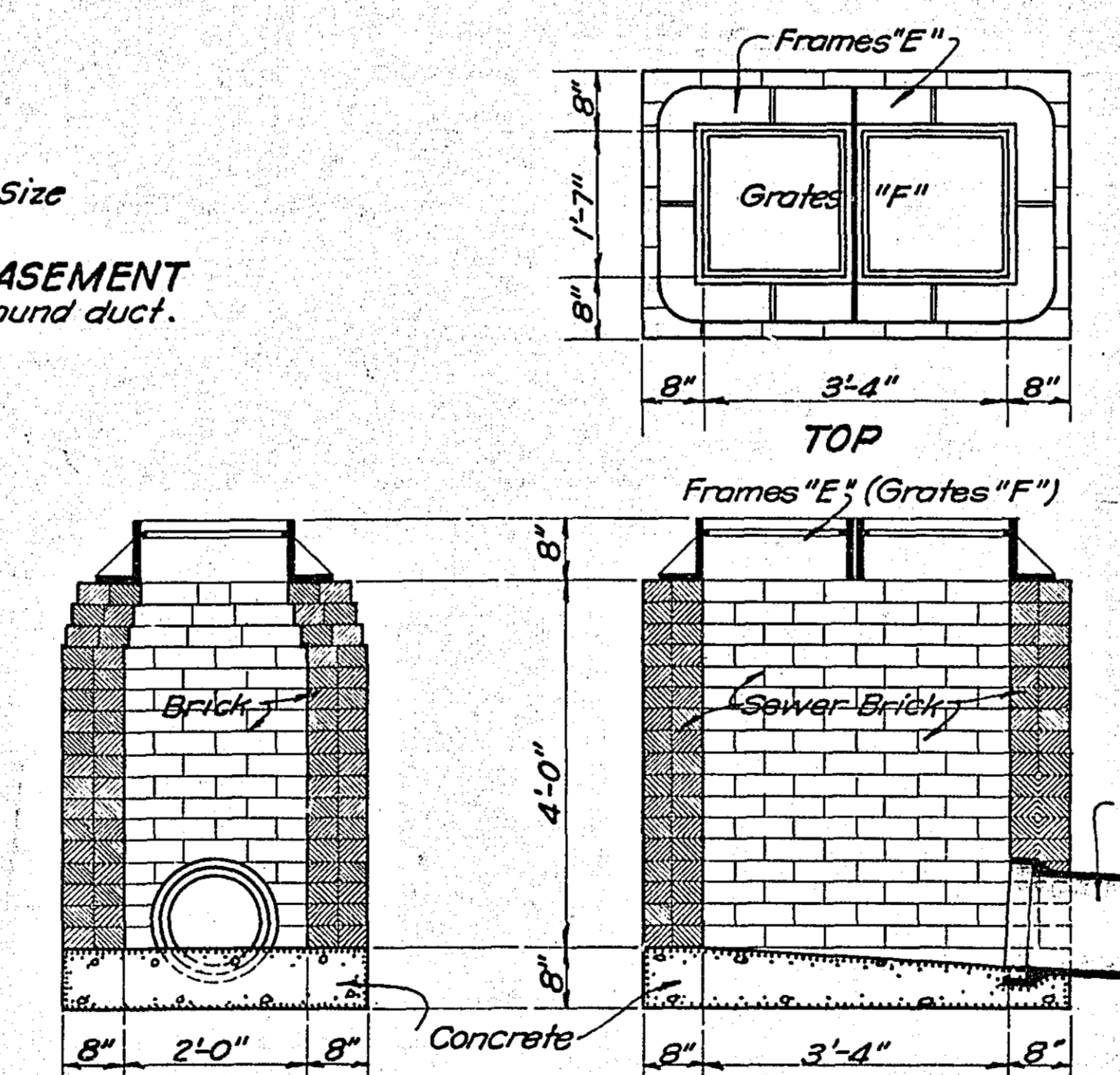
SECTION - SINGLE CELL DUCT ENCASEMENT Showing minimum thickness of concrete around duct.



TYPE 'C' PULL BOX Scale 3/4" = 1'-0"



SECTION SPECIAL CATCH BASIN NO. 538A (Locate Catch Basins at present outlet pipes. Requires new castings E and F)



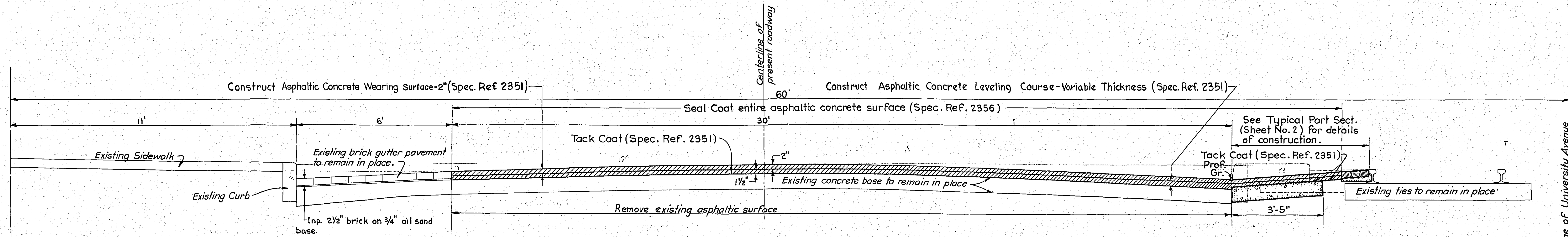
SECTION SPECIAL CATCH BASIN NO. 538 (Requires new castings E and F)

Standard Detail Plates issued Oct. 1, 1947 and approved by the Public Roads Administration April 1, 1948 with revisions submitted by the Division Engineer of the Public Roads Administration on January 31, 1949 shall govern. The following standard detail plates shall govern on this project.

PLATE NO.	STANDARD DETAIL PLATES	PLATE NO.	STANDARD DETAIL PLATES
1120	Contraction Joint	1168	Curb Inlet Casting
2521	Insert for Contraction Joints	19860	Catch Basin Castings
2550	Longitudinal Float	17898	Manhole Details
2560	Master Straight Edge		
2561	Testing and Finishing Straight Edges		
2575	Field Laboratory Building		
2576	Cement Checkers Shelter		
4180 C	Manhole Step Casting		
8000-8001	Standard Barricades		

STATEMENT OF ESTIMATED QUANTITIES

NO.	ITEM	UNIT	EST. QUANTITY	
			EST. QUANTITY	EST. QUANTITY
104.551	Remove Bituminous Pavement Surfacing	Sq. Yd.	36,948.94	37096
104.552	Remove Block Pavement Surfacing	Sq. Yd.	181.15	177
104.553	Remove Concrete Pavement Surfacing	Sq. Yd.	2,401.48	2420
104.554	Remove Concrete Base	Sq. Yd.	2,337.23	2052
506.552	Construct Catch Basin (Type N8 538)	Catchbasin	11	11
525.552	Construct Catch Basin (Type N8 538A)	Catchbasin	13	13
506.552	Construct Catch Basin (Type N8 644A)	Catchbasin	10	10
2104.504	Remove Curb (Present safety Islands)	Lin. Ft.	9,005.00	9190
2104.506	Remove Sidewalk (Present safety Islands)	Sq. Yd.	2,464.92	2481
2104.511	Remove Catch Basins	Structure	23	23
2105.503	Class "C" Excavation	Cu. Yd.	214.01	178
2503.501	Trench Excavation (0'-6")	Lin. Ft.	111.50	198
2503.513(2)	Furnish and Install 12" Clay Pipe Sewer	Lin. Ft.	111.50	198
2302.515	Concrete Base (7" thick)	Sq. Yd.	3,442.30	2998
2305.501	Brick Pavement	Sq. Yd.	1,328.22	7895
SUPPLEMENTAL AGR. NO. 1				
CONC. BASE 7" THICK (QUANTITIES IN CONTRACT ITEM)				
	CONST. BASE VAR. THICKNESS	C.Y.	54.15	
	SUPPL. AGR. NO. 2			
	BACKFILL MAT'L. IN PLACE	TON	146.8	
2351.502	Bituminous Material for Tack Coat (RC-2)	Gallon	2,414.00	4097
2351.504	Bituminous Material for Asphaltic Concrete (AC-1, 70-85 Penetration)	Ton	411.618	478
2351.511	Asphaltic Concrete (Leveling Course)	Ton	4,133.0	4194
2351.512	Asphaltic Concrete Surface (Leveling Course)	Sq. Yd.	40,707.22	40988
2351.512	Asphaltic Concrete Surface (Wearing Surface)	Sq. Yd.	40,707.08	40988
2351.505	Bituminous Material for Seal Coat (RCS-3)	Gallon	10,223.0	9018
2356.506	Seal Coat Aggregate	Ton	492.74	451
2356.512	Bituminous Seal Coat	Sq. Yd.	41,480.84	40988
351.571	Rubber Compound for Asphaltic Concrete (in Mixture)	Ton	20.515	24
351.571	Rubber Compound for Asphaltic Concrete (in Stockpile)	Ton	8.400	6
SUPPL. AGR. NO. 2				
	R.F.I. TIME SWITCHES	NO. OF	10	
	F.E.I. WEATHERPROOF CABINETS	NO. OF	5	
SUPPL. AGR. NO. 3				
	SPRAYING SAFETY ISLANDS		18	151A11D
499.551	Construct Safety Islands	Island	18	18
2432.502	Electric Lighting System (See Special Provisions)	System	1	1



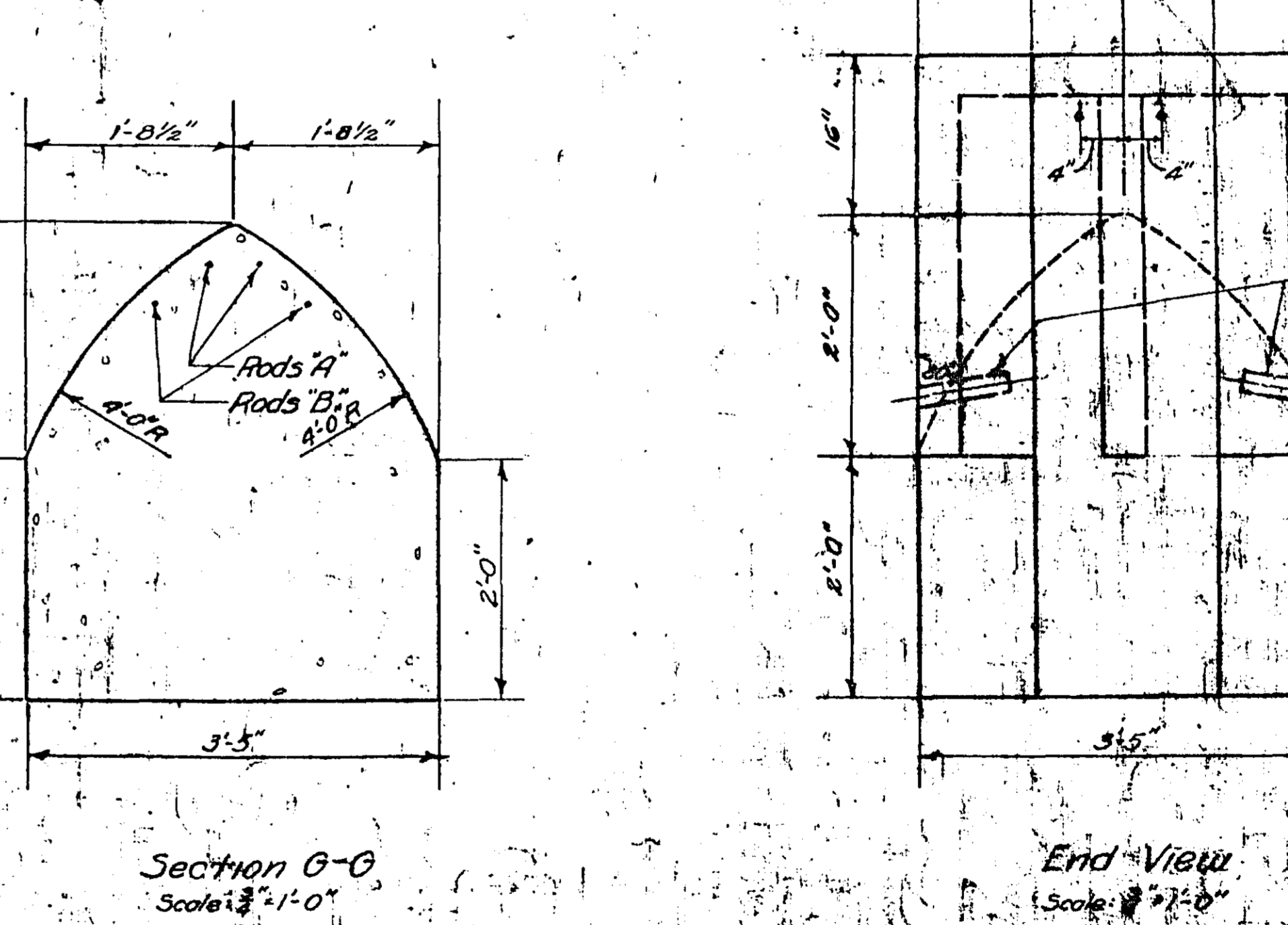
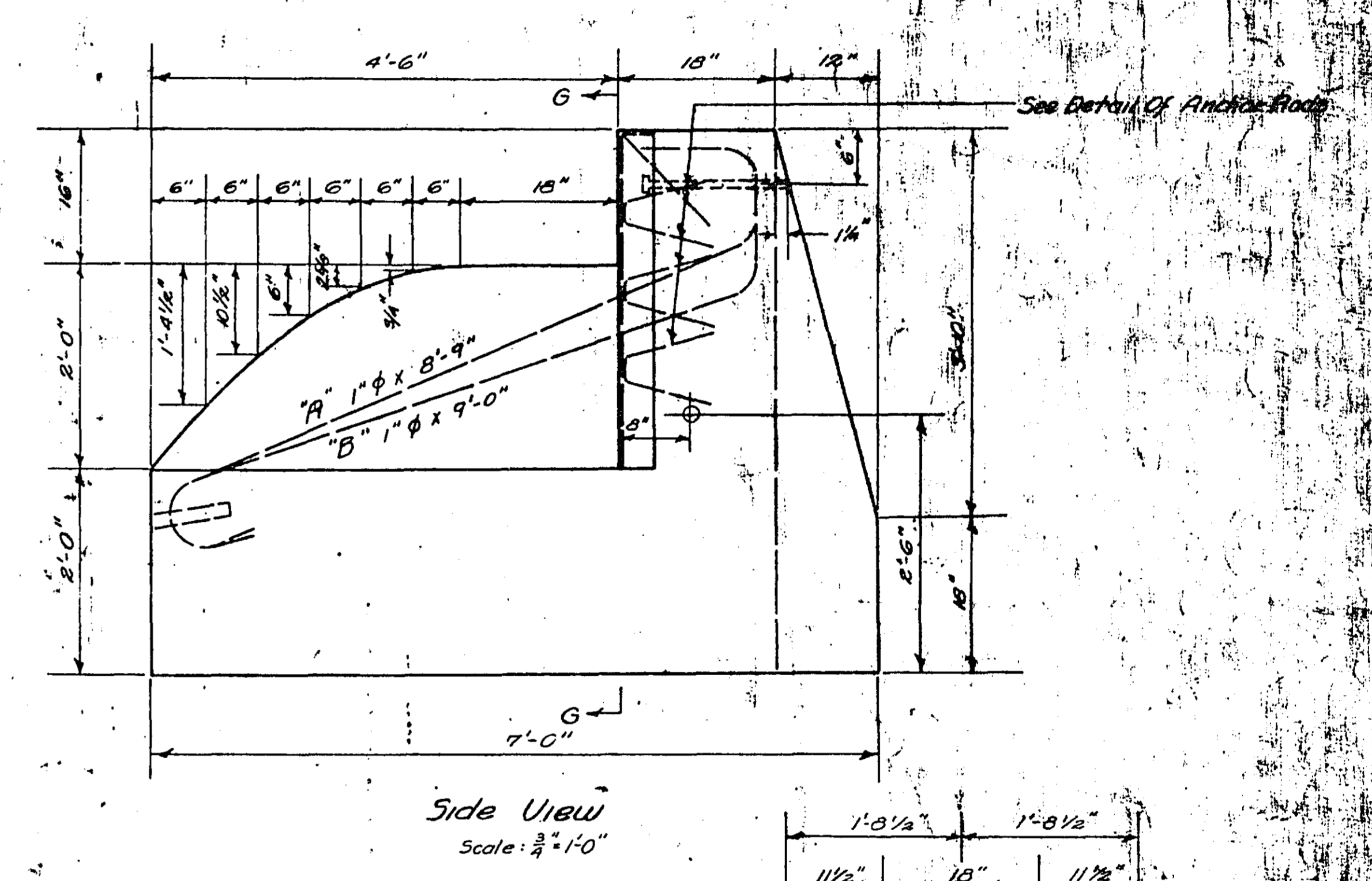
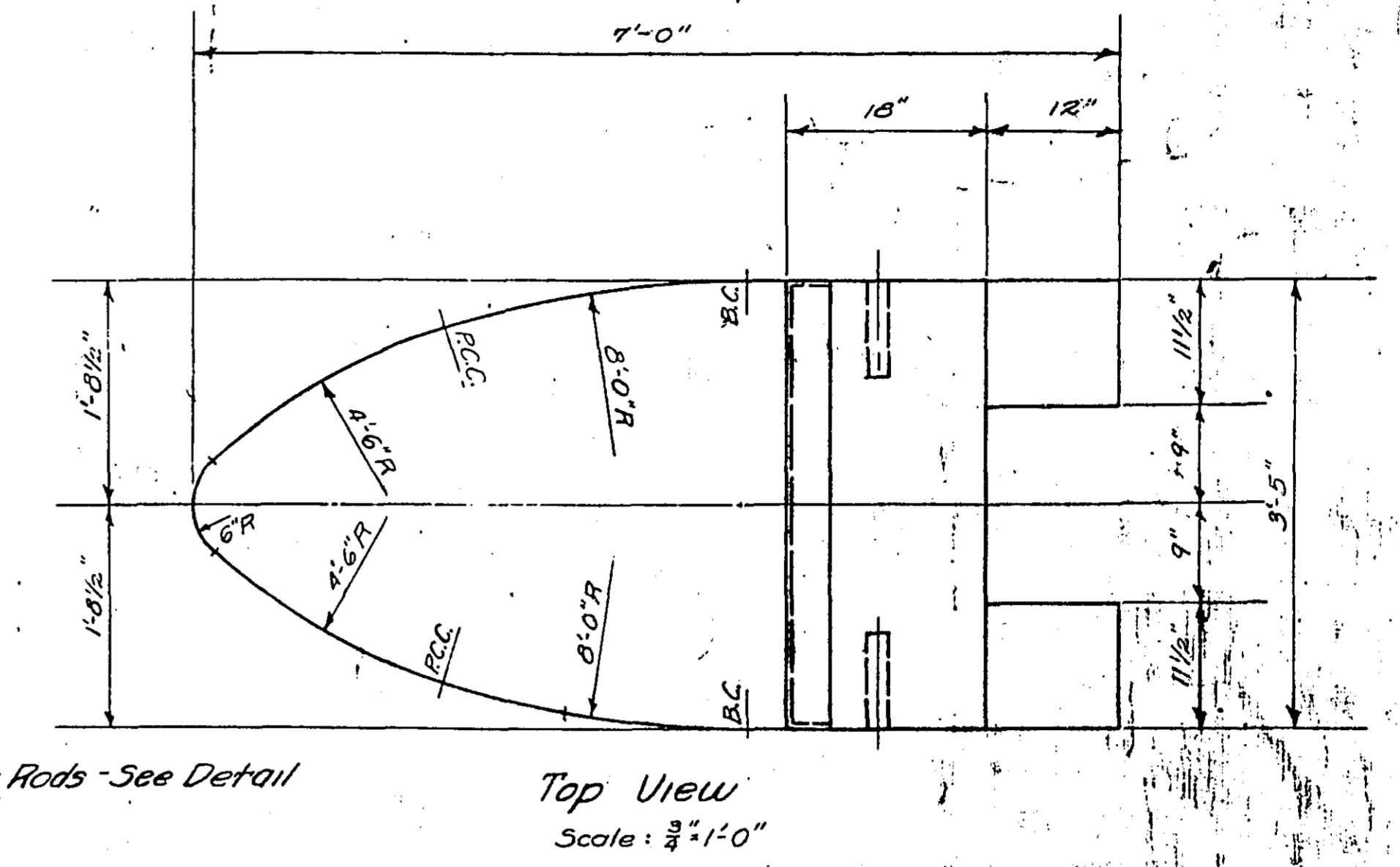
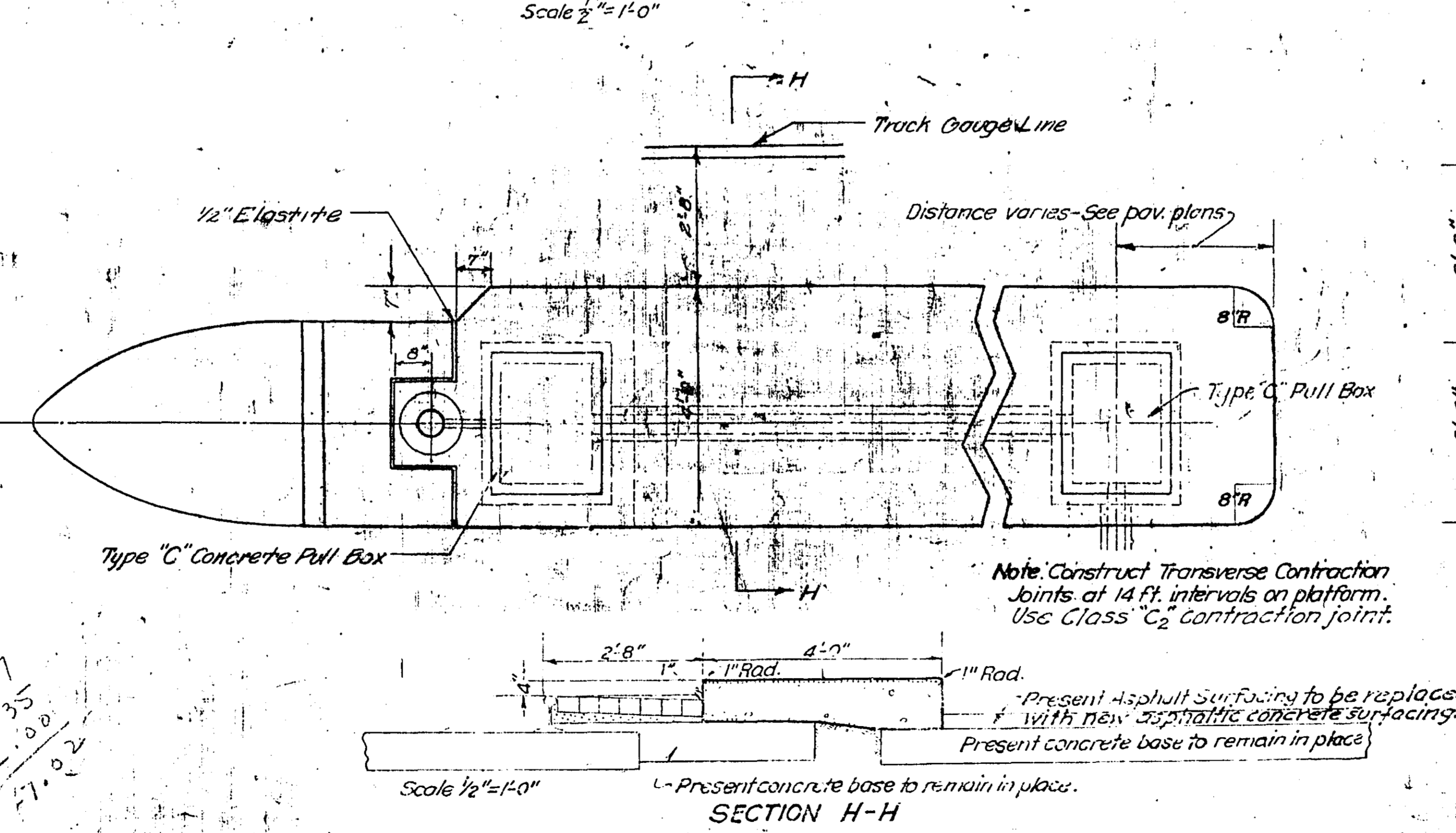
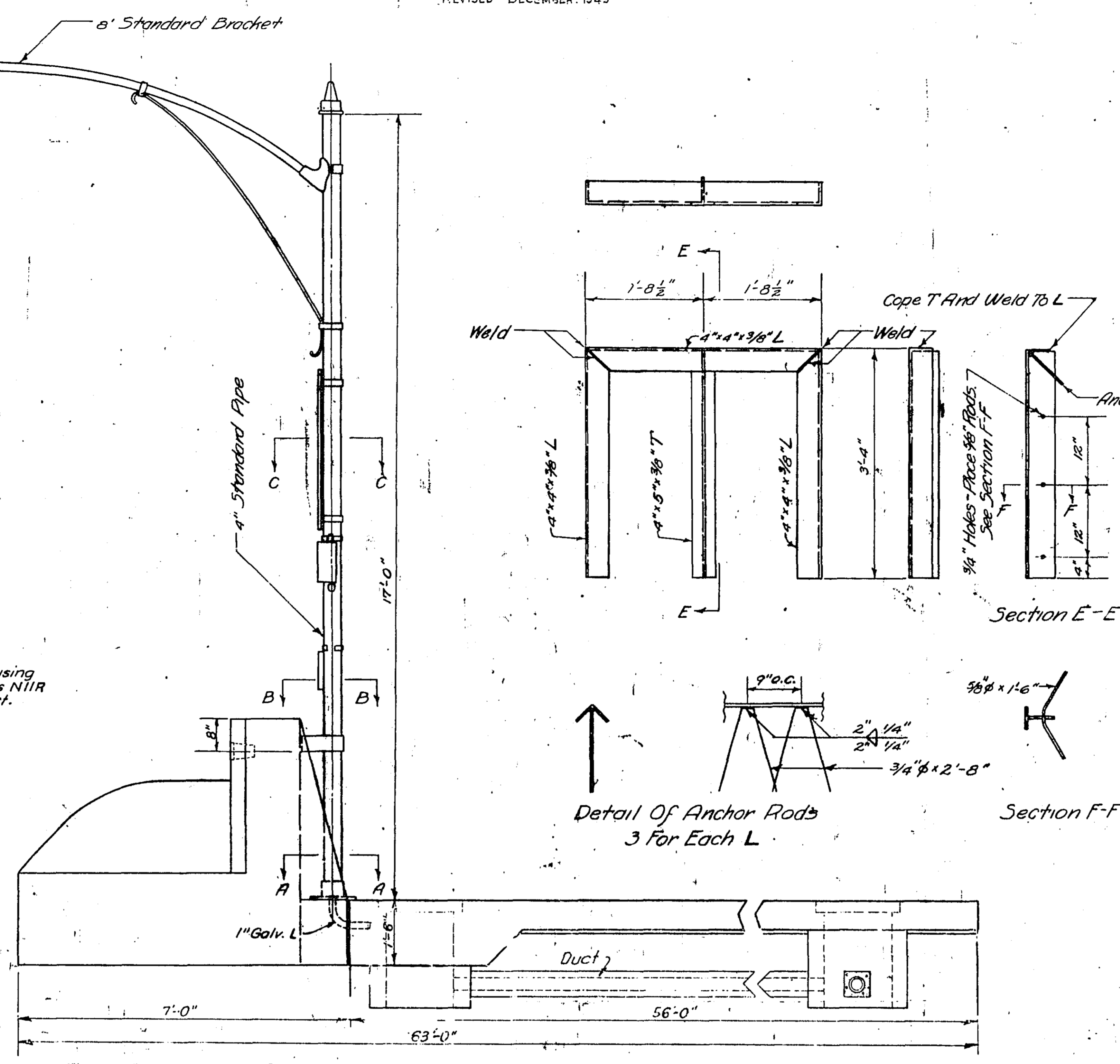
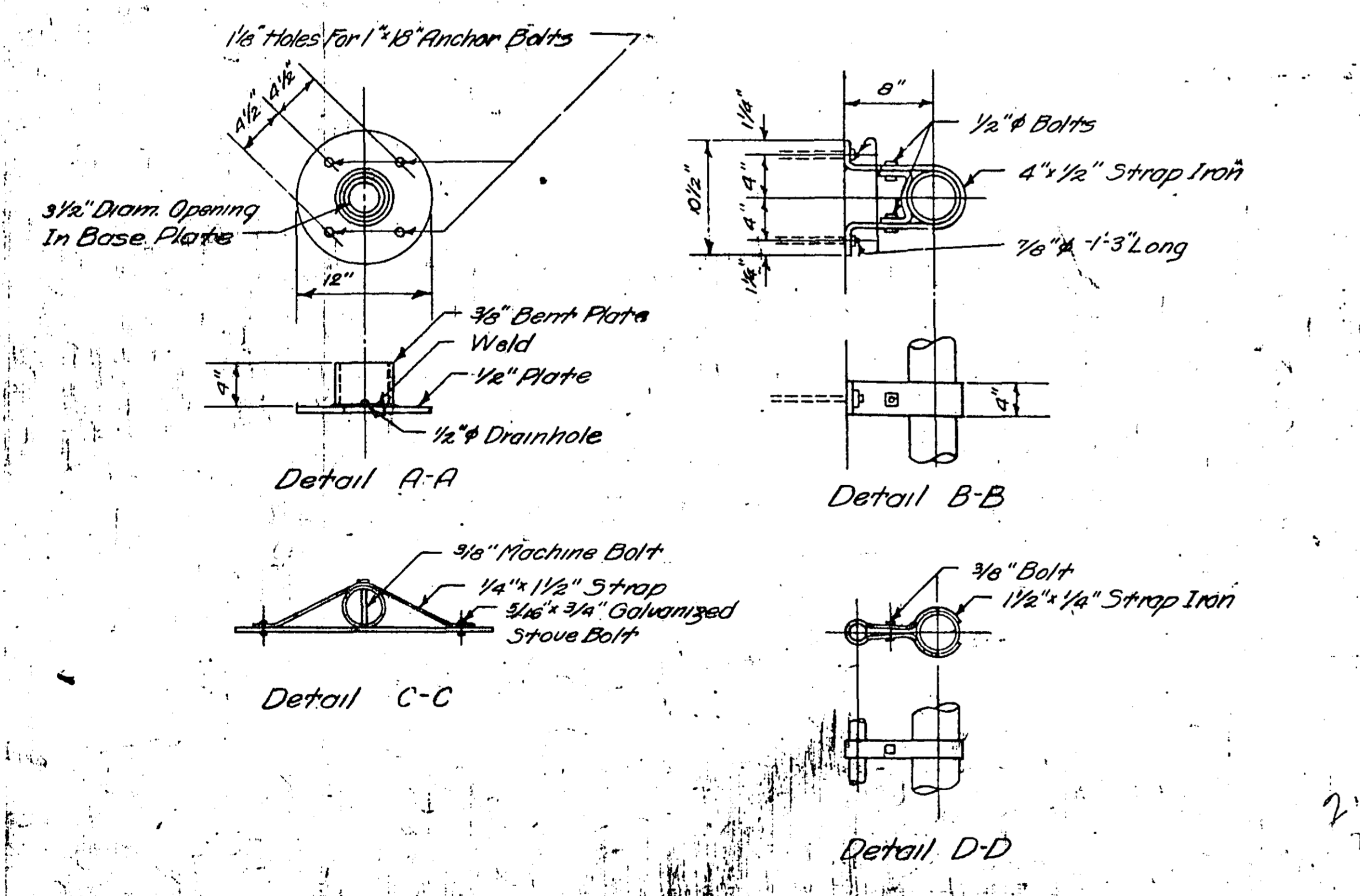
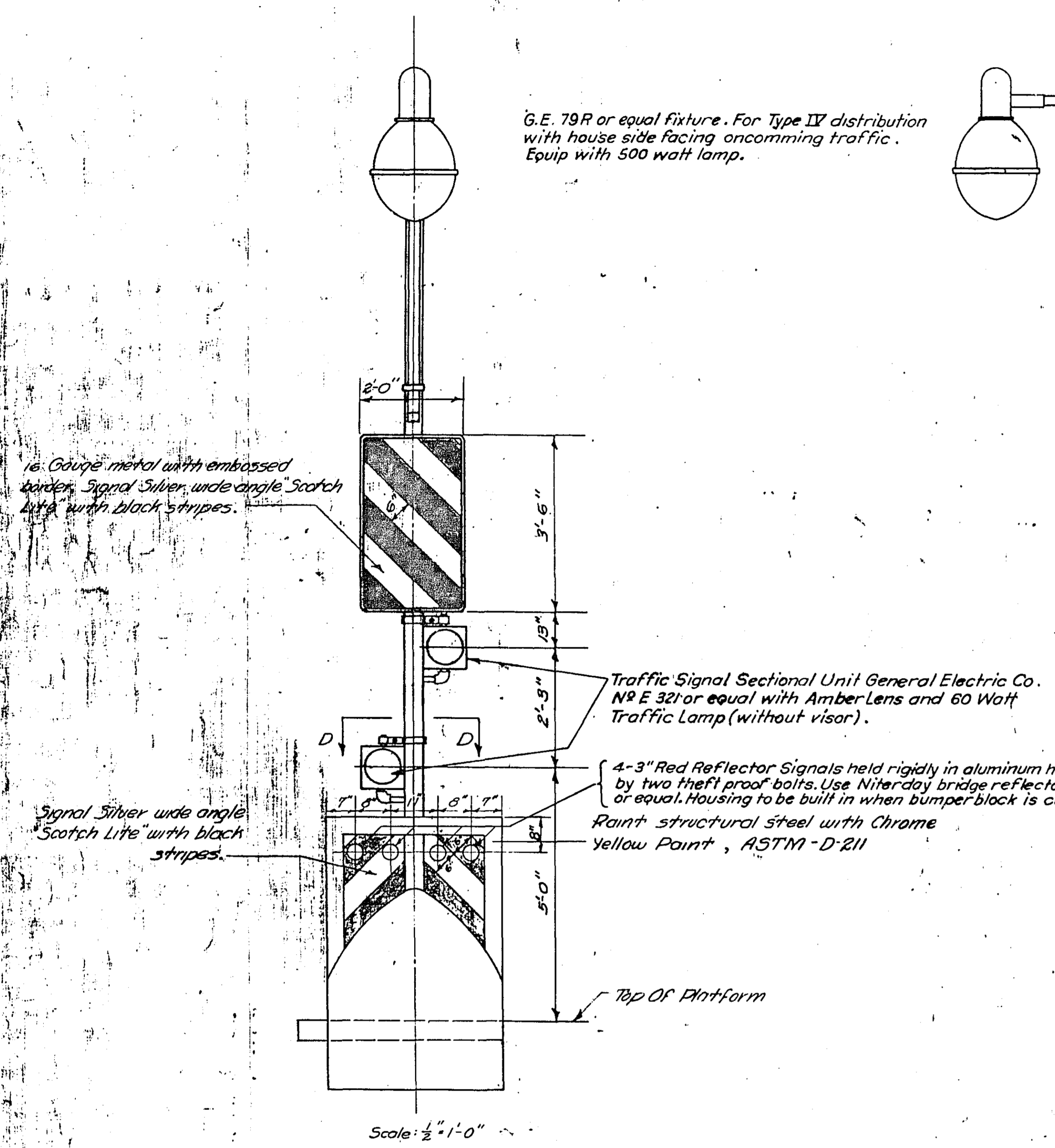
Scale 1/2" = 1'-0"  
**TYPICAL HALF-SECTION FROM DALE ST. TO RICE ST.**

**NOTE:** Use Rubber Admixture for Asphaltic Concrete at the following locations:  
 West Bound Lanes Sta. 0+30.0 to Sta. 19+50.8  
 East Bound Lanes Sta. 33+04.1 to Sta. 52+56.95

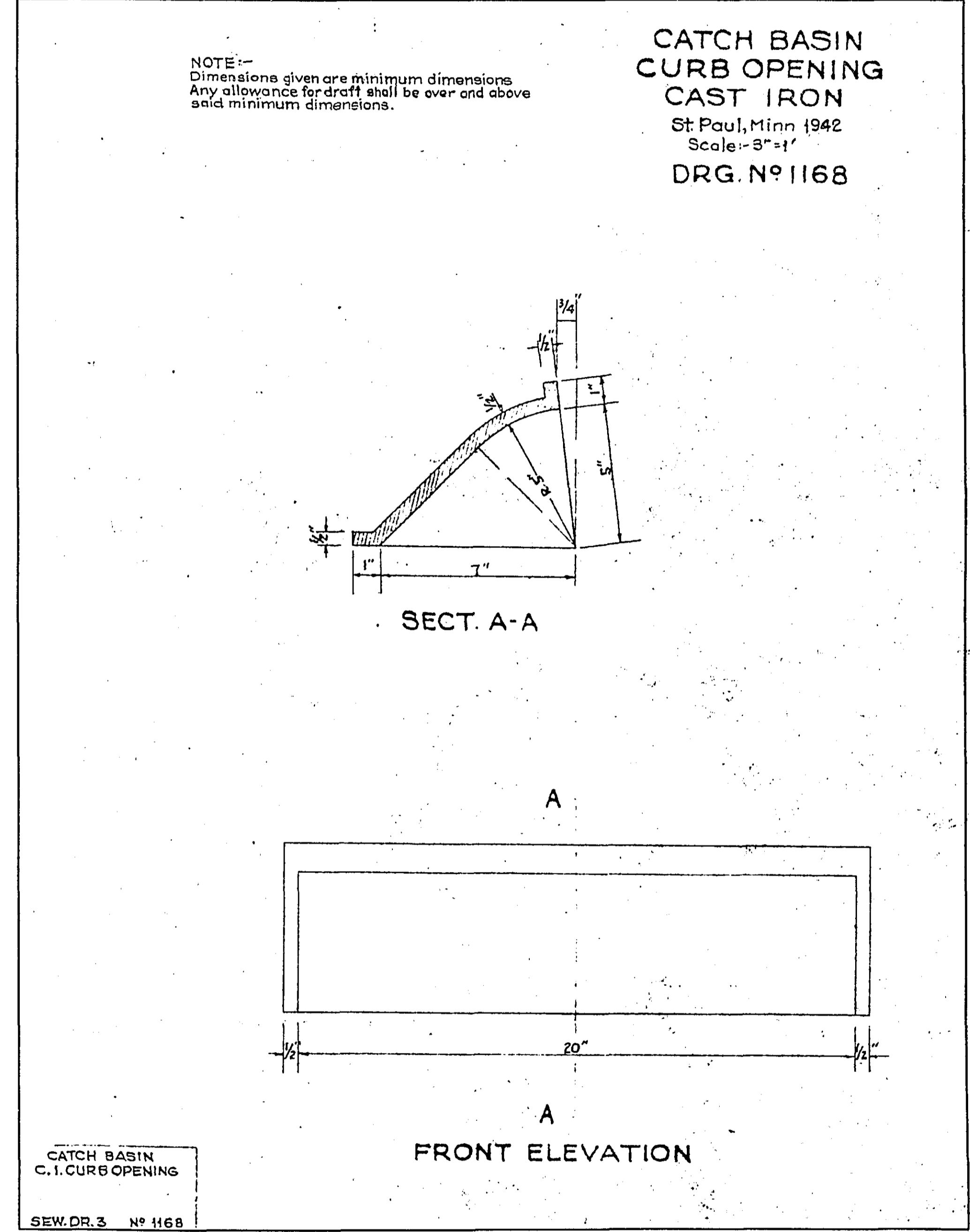
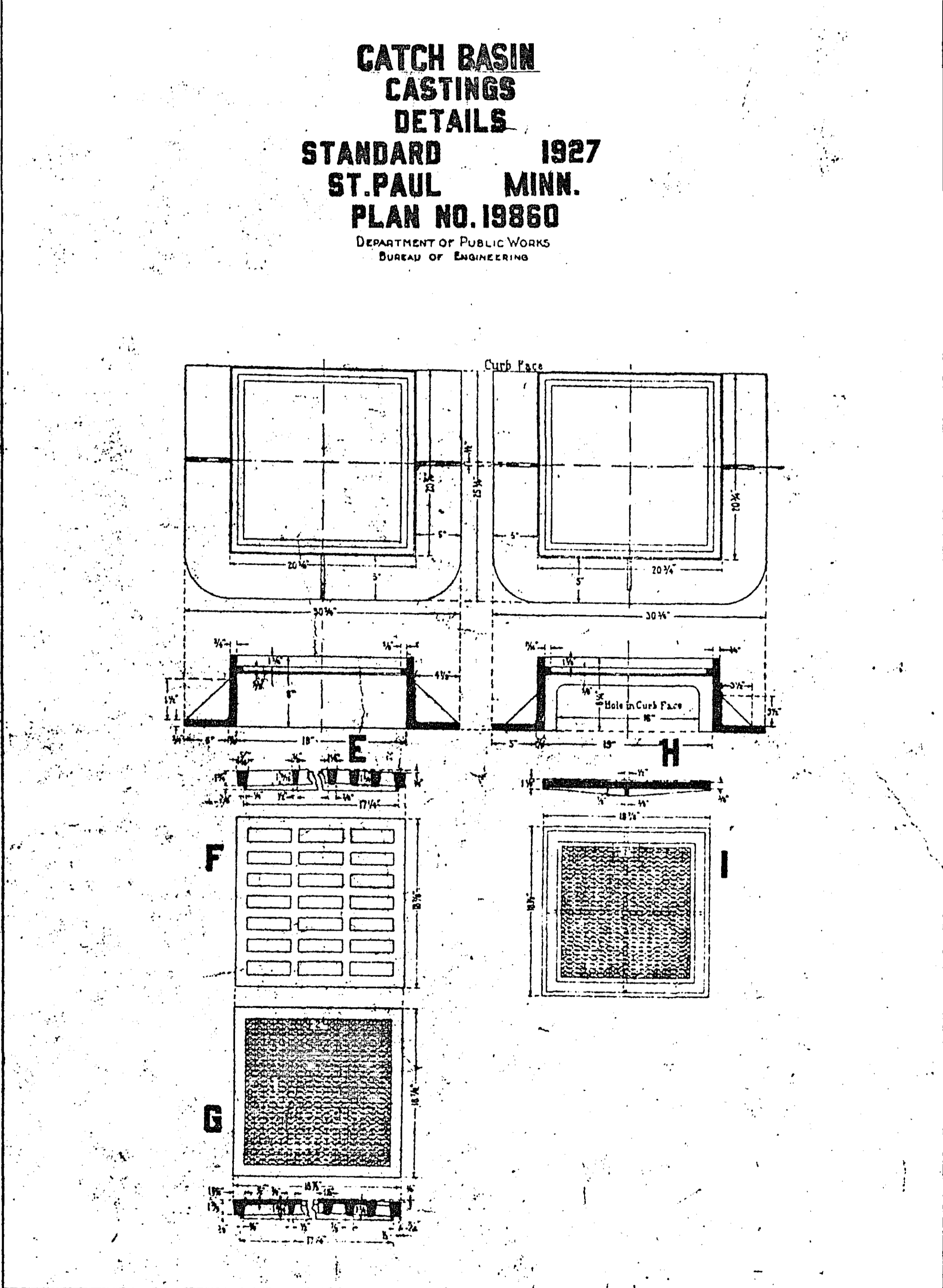
UNIVERSITY AVE.  
 FROM RICE ST. TO DALE ST.  
 DETAILS OF SAFETY ISLANDS AND FIXTURES

REVISED MARCH 1949  
 REVISED DECEMBER 1949

Note: Concrete bumper may be precast in an upside-down position. Both the asphalt surfacing and present concrete base shall be cut and removed and a smooth uniform subgrade shall be prepared at an elevation one foot below present paving surface. Except for the face to receive "Scotch Lite" the bumper shall be painted traffic yellow.



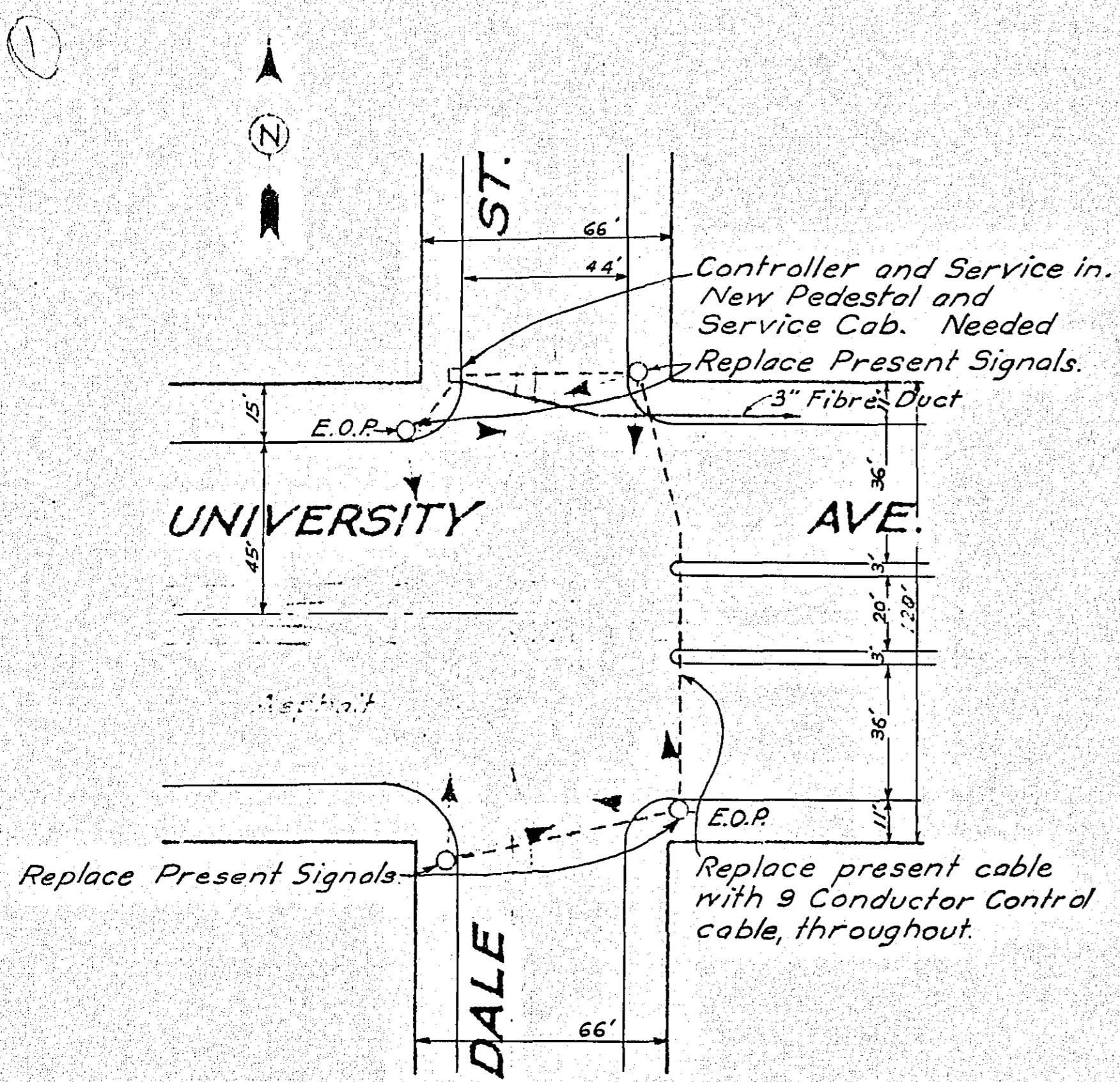
Volume of Concrete in Each Island  
 2.6 cu yds. in bumper  
 6.5 cu yds. in platform (including pull boxes and duct encasement)



**CITY OF ST. PAUL**  
**STANDARD DETAIL PLATES**

TRAFFIC SIGNALS

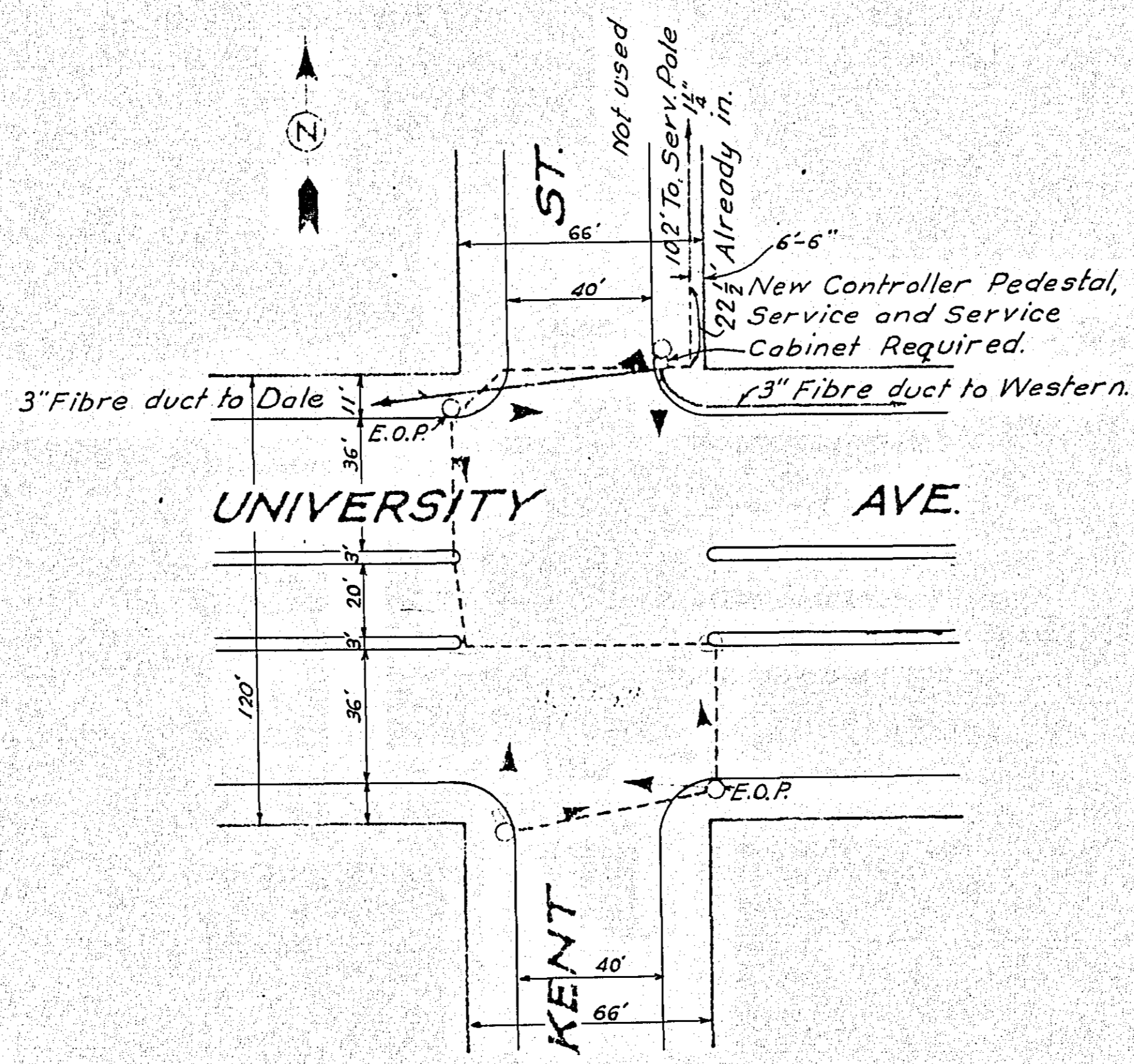
Dept. of Public Works  
Scale 1"=40'



TRAFFIC SIGNALS  
UNIVERSITY & DALE

TRAFFIC SIGNALS

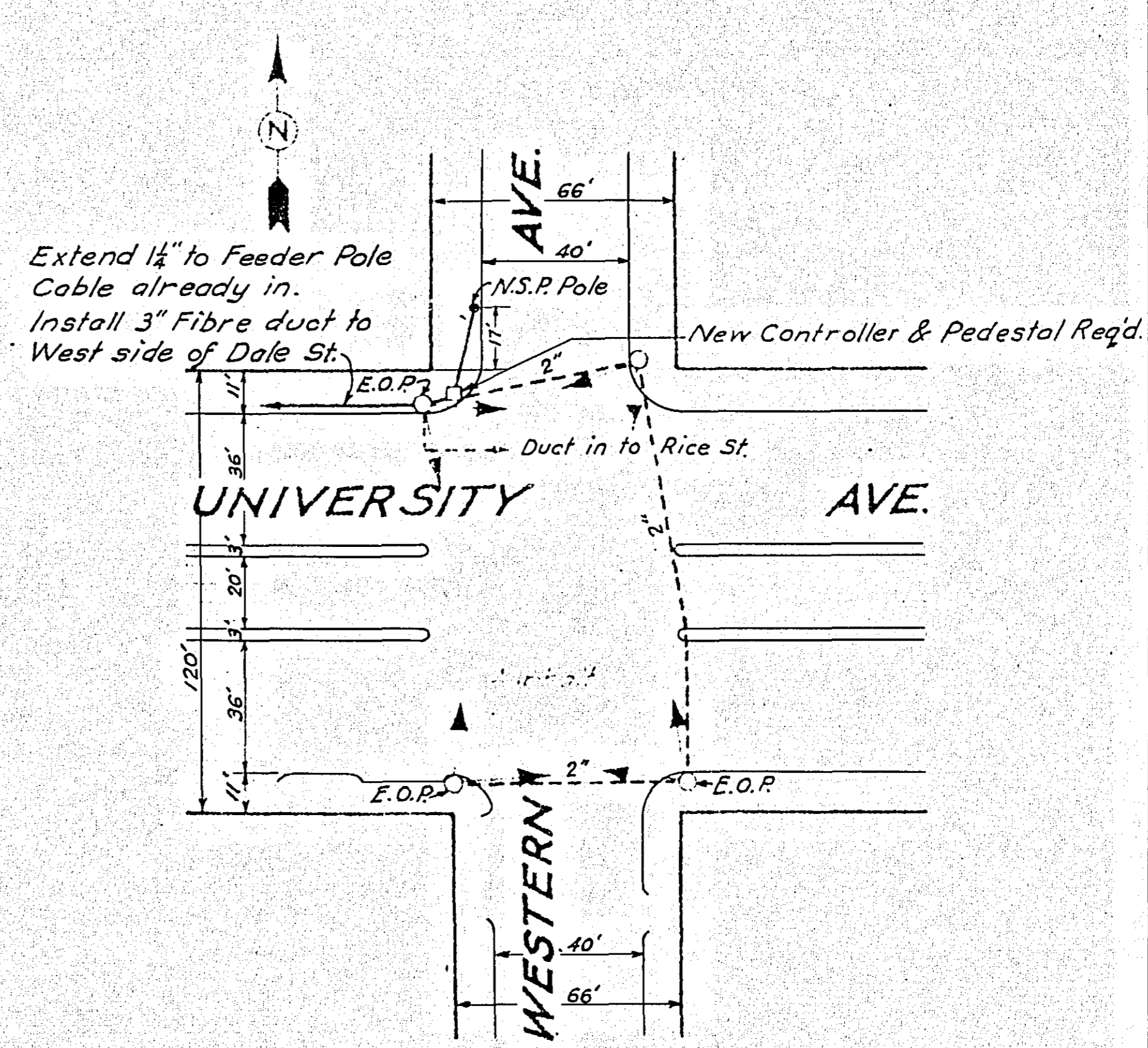
Dept. of Public Works  
Scale 1"=40'



TRAFFIC SIGNALS  
UNIVERSITY & KENT

TRAFFIC SIGNALS

Dept. of Public Works  
Scale 1"=40'

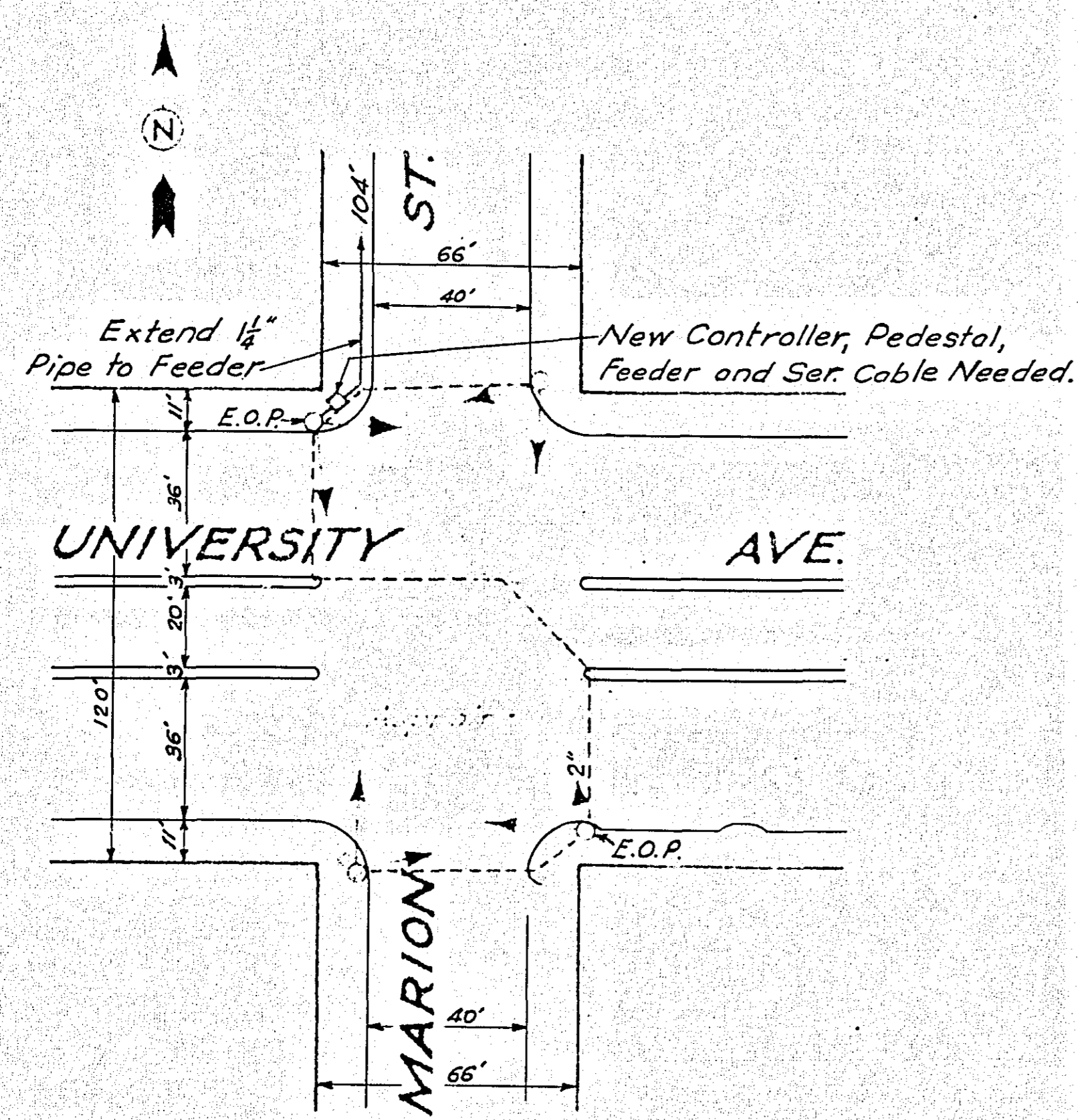


1. Splice in interlock cable made in pull box which is located in sidewalk in front of #483 University Ave.
2. Splice in interlock cable made in 2nd light post east of Farrington Ave. on north side of University Ave.

TRAFFIC SIGNALS  
UNIVERSITY & WESTERN

TRAFFIC SIGNALS

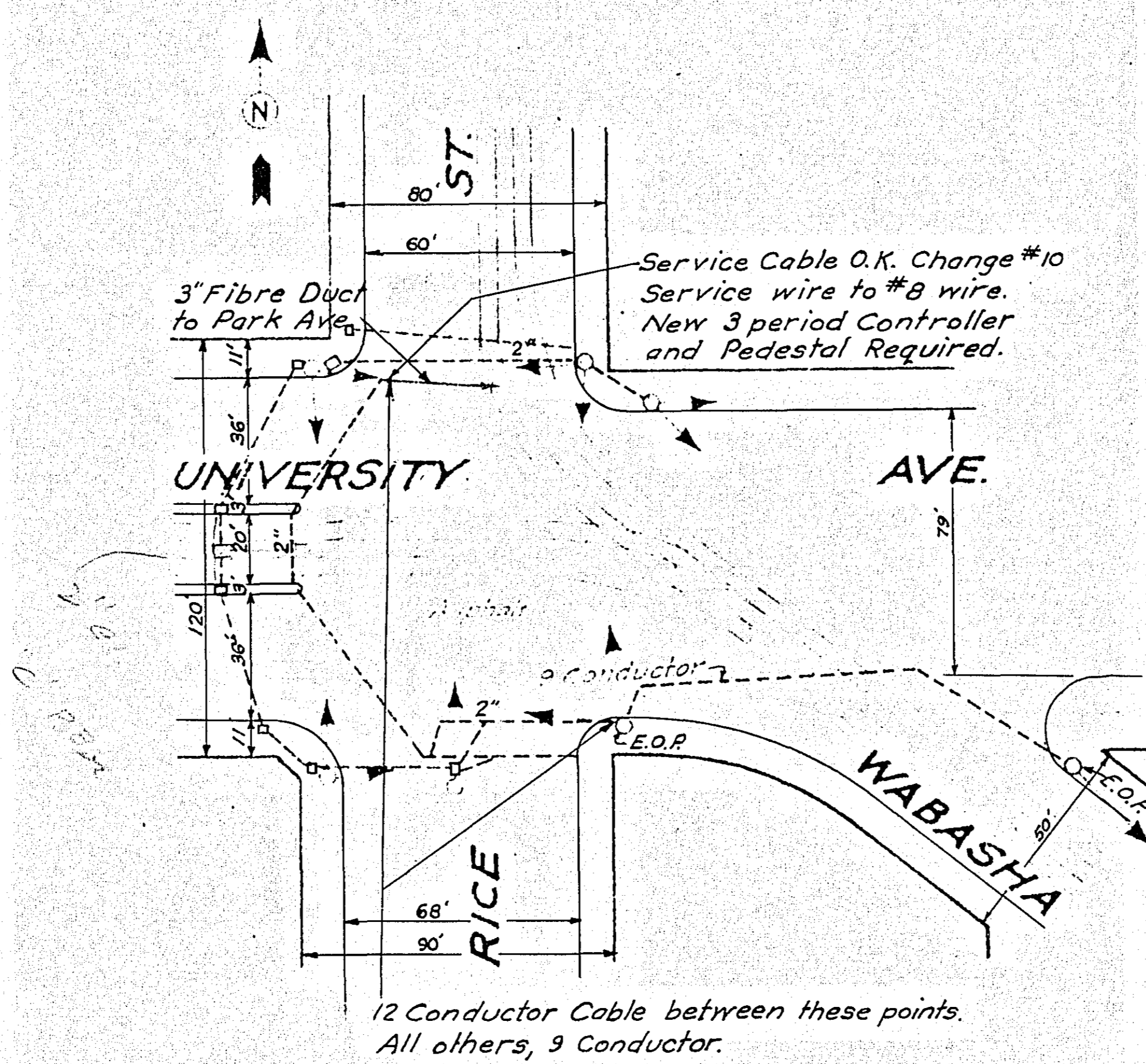
Dept. of Public Works  
Scale 1"=40'



TRAFFIC SIGNALS  
UNIVERSITY & MARION

TRAFFIC SIGNALS

Dept. of Public Works  
Scale 1"=40'



TRAFFIC SIGNALS  
UNIVERSITY & RICE

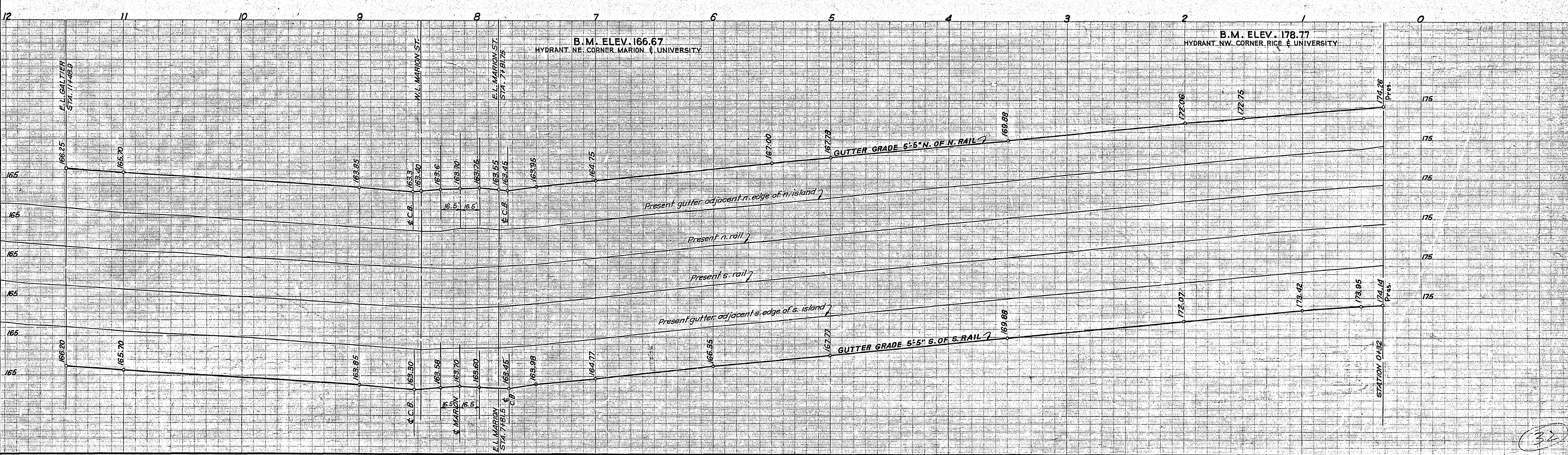
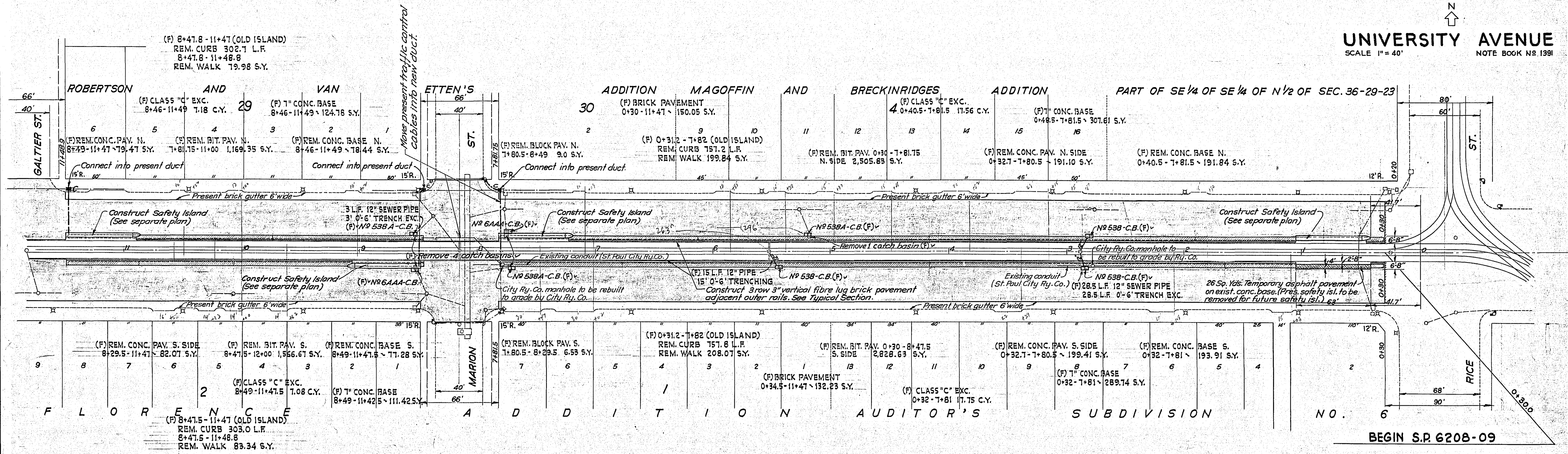
NOTE:-  
THIS SHEET IS INSERTED IN THE PLANS ONLY  
FOR THE PURPOSE OF SHOWING EXISTING  
SIGNALS AND CONDUITS.

CITY OF ST. PAUL  
STREET SIGNAL DETAILS

S.P. 6208-09 (T.H. 12:104)

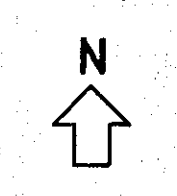
SHEET 6 OF 11 SHEETS

**UNIVERSITY AVENUE**  
SCALE 1" = 40'  
NOTE BOOK NO. 1991

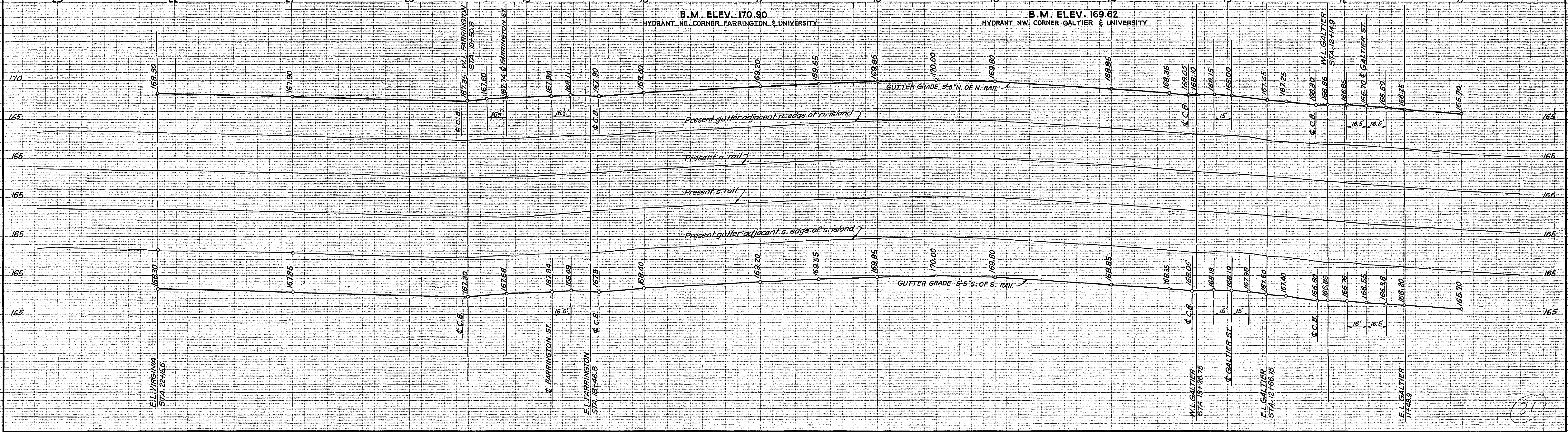
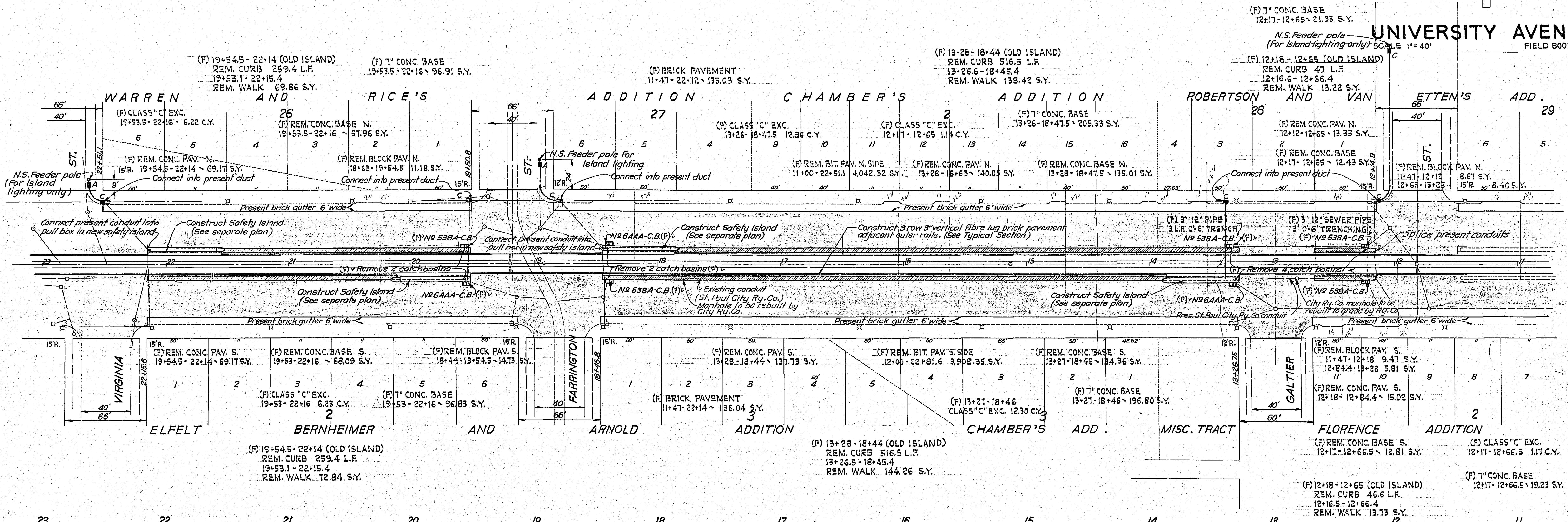


ADJACENT DOCUMENT WAS SUPPLIED BY AGENCY NAMED BELOW, DURING THE REGULAR COURSE OF BUSINESS, TO BE FILMED BY STATE OF MINNESOTA MICROGRAPHIC SERVICES UNIT ACCORDING TO NATIONAL BUREAU OF STANDARDS REQUIREMENTS FOR PERMANENT MICROFILM AND ACCORDING TO FILED PROCEDURES FOR THIS DOCUMENT.

Agency/Authority: DCT Road Design Tom Hayes  
Date: 1-30-85  
Doc. I.D.: 263  
Microfilm Signature: [Signature]  
Date: 1-30-85



**UNIVERSITY AVENUE**  
FIELD BOOK NO. 1991



State Proj. No. 6208-09 (12=104) No. 8 of 11 Sheets



UNIVERSITY AVENUE  
SCALE 1"=40'  
FIELD BOOK NO 1991

