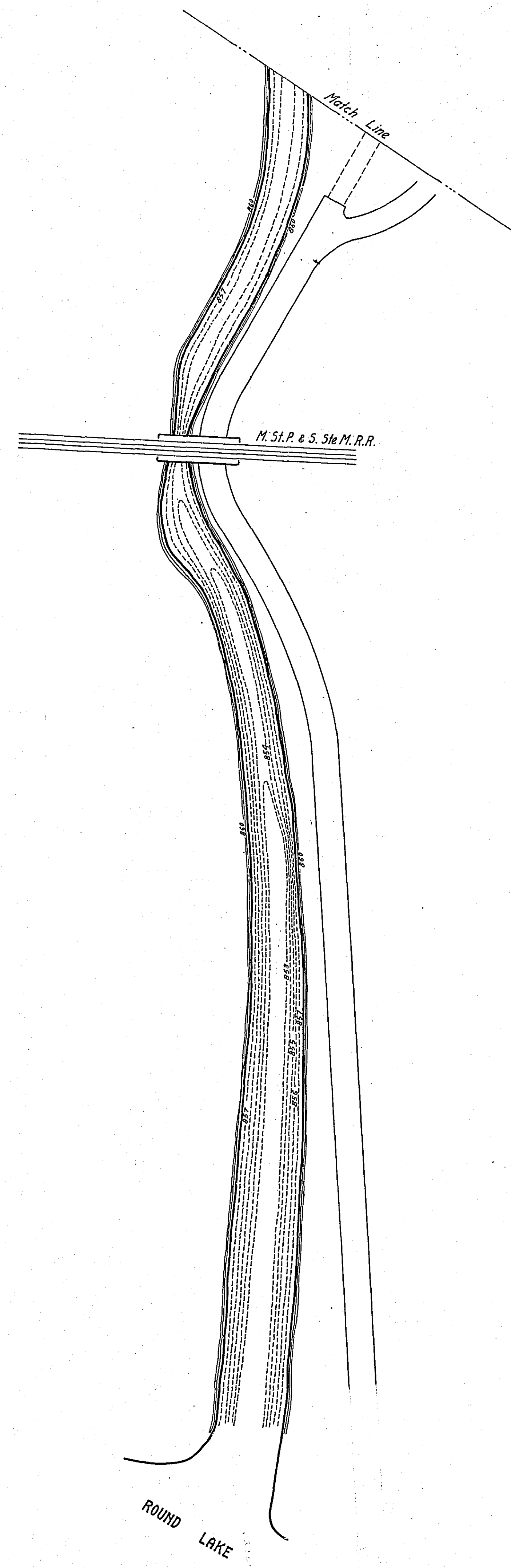


ARCADE ST.



TOPOGRAPHIC MAP  
OF  
**KELLER LAKE**  
RAMSEY COUNTY, MINNESOTA

SCALE: 1 INCH = 100 FEET  
CONTOUR INTERVAL = 2 FEET  
RAMSEY CO. ENGINEER'S OFFICE  
DEPT. OF LAKE IMPROVEMENT  
*Harry S. Bronson*  
COUNTY SURVEYOR

SHEET 1 OF 3 SHEETS

— — — — — COUNTY PROPERTY LINE

SEC. 16. T. 29N., R. 22W.  
Rev. 6-3-36

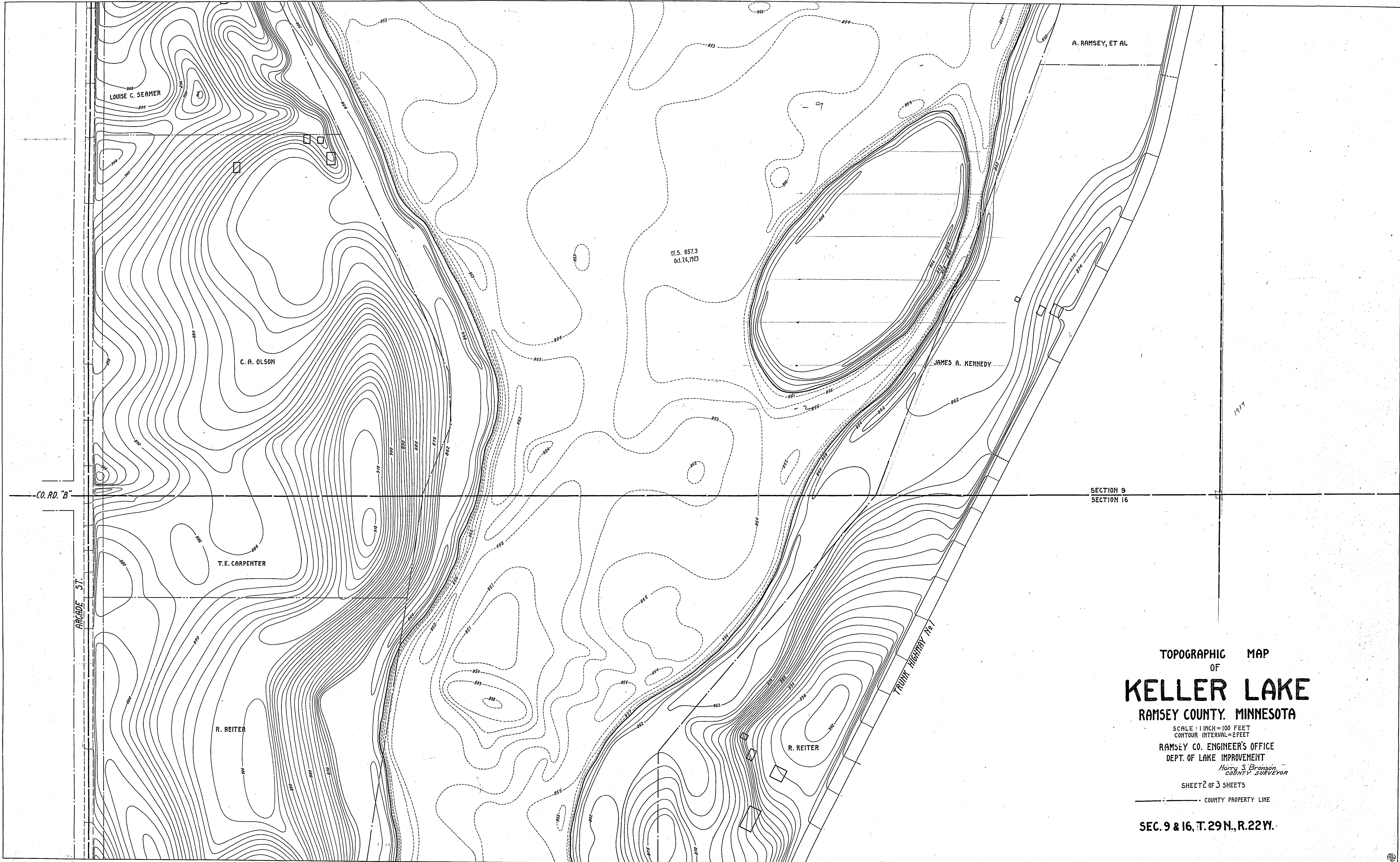
FIG. 8

Sheet 3

FIG. 8



MATCH LINE FOR SHEET No 3



TOPOGRAPHIC MAP  
OF  
**KELLER LAKE**  
RAMSEY COUNTY, MINNESOTA

SCALE: 1 INCH = 100 FEET  
CONTOUR INTERVAL = 2 FEET

RAMSEY CO. ENGINEER'S OFFICE  
DEPT. OF LAKE IMPROVEMENT  
*Harry S. Bronson*  
COUNTY SURVEYOR

SHEET 2 OF 3 SHEETS

— COUNTY PROPERTY LINE

SEC. 9 & 16, T. 29 N., R. 22 W.



TOPOGRAPHIC MAP  
OF  
**KELLER LAKE**  
RAMSEY COUNTY, MINNESOTA

SCALE: 1 INCH = 100 FEET  
CONTOUR INTERVAL = 2 FEET  
RAMSEY CO. ENGINEER'S OFFICE  
DEPT. OF LAKE IMPROVEMENT  
*Harry S. Branson*  
COUNTY SURVEYOR

SHEET 3 OF 3 SHEETS

— COUNTY PROPERTY LINE

SEC. 9, T.29N., R.22W.

A. RAMSEY, ET AL

S.T.H. 36

M.S. 857.3  
Oct. 24, 1923  
NORMAL ELEVATION 859.0

PROPOSED BRIDGE

KELLER

PARKWAY

TRUNK HIGHWAY No. 1

LOUISE C. SPYER

DUCHARME ROAD

ARCADE ST.

10.387A