

TOPOGRAPHIC MAP OF GERVAIS LAKE

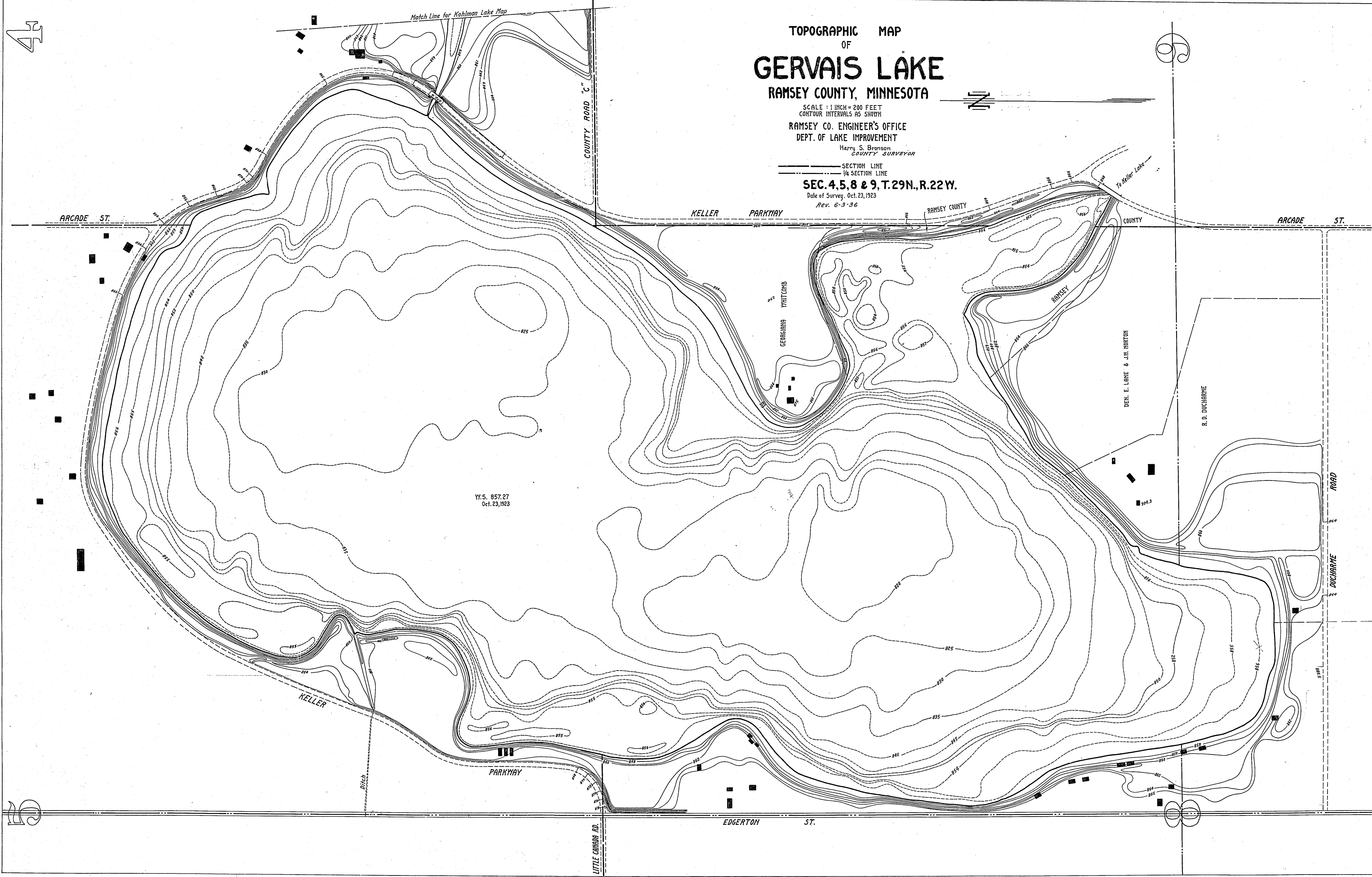
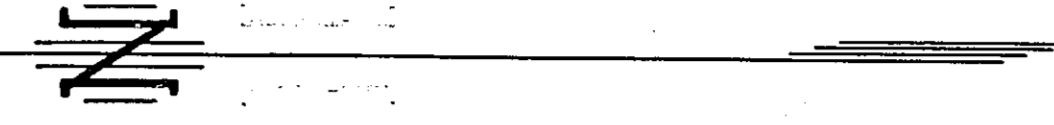
RAMSEY COUNTY, MINNESOTA

SCALE: 1 INCH = 200 FEET
CONTOUR INTERVALS AS SHOWN

RAMSEY CO. ENGINEER'S OFFICE
DEPT. OF LAKE IMPROVEMENT
Harry S. Bronson
COUNTY SURVEYOR

SECTION LINE
1/4 SECTION LINE
SEC. 4, 5, 8 & 9, T. 29N., R. 22W.

Date of Survey: Oct. 23, 1923
Rev. 6-3-36



Y.S. 857.27
Oct. 23, 1923