

OFFICE OF COUNTY ENGINEER RAMSEY COUNTY

CONSTRUCTION PLAN FOR GRADING AND BITUMINOUS SURFACING COUNTY ROAD "F"

BETWEEN: T.H. 61 AND: MCKNIGHT RD.

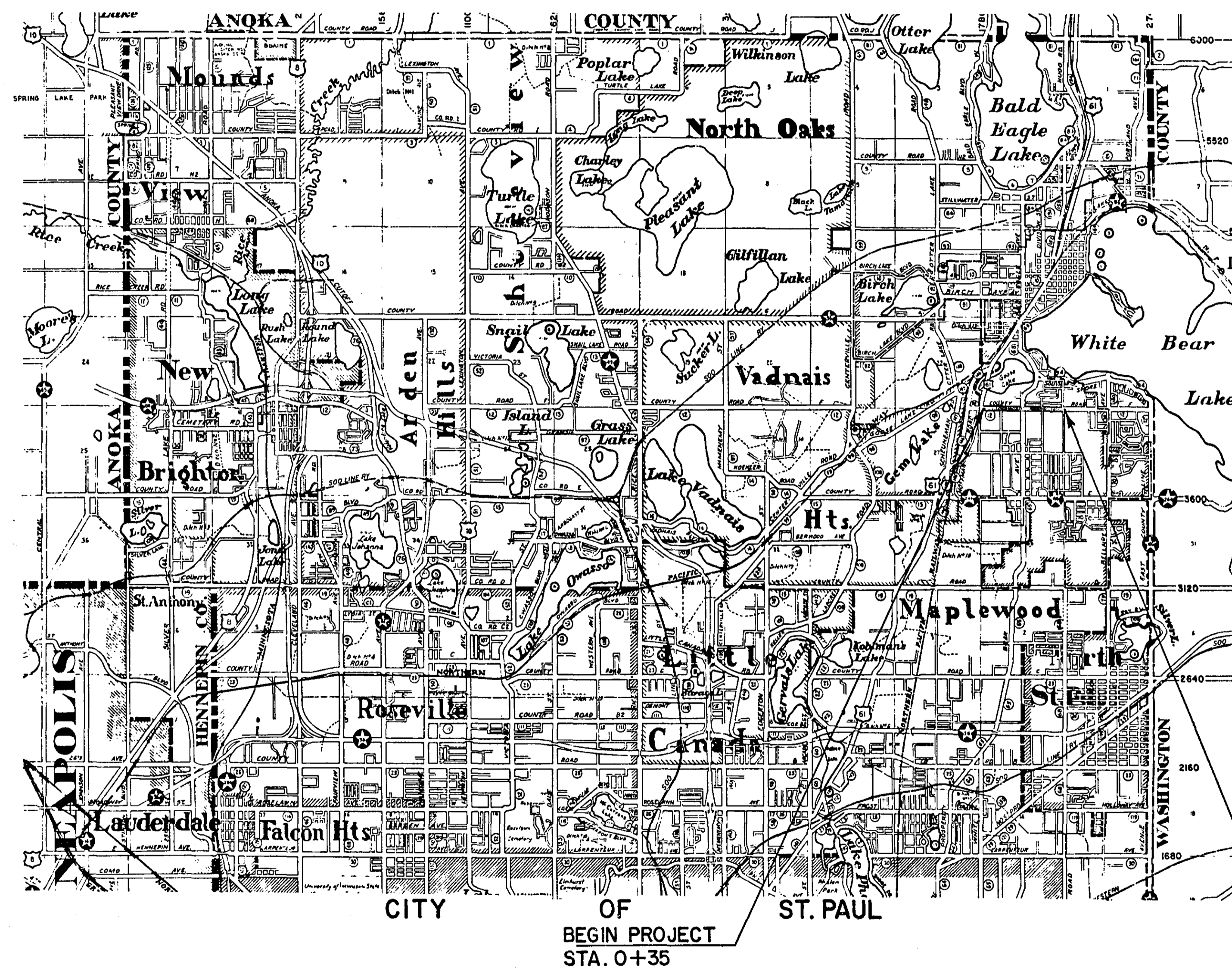
FROM: A POINT 263' EAST OF THE SOUTHWEST CORNER OF SEC.23, T.30N., R.22W. TO: A POINT 55.76' EAST OF THE SOUTHWEST CORNER OF SEC.24, T.30N., R.22W.

GROSS LENGTH 5165 FEET 0.978 MILES
BRIDGES-LENGTH 0 FEET 0 MILES
EXCEPTIONS-LENGTH 0 FEET 0 MILES
NET LENGTH 5165 FEET 0.978 MILES

SCALES
PLAN, 1 inch = 50 Feet
PROFILE, Horiz 1 inch = 50 Feet Vert 1 inch = 5 Feet
WORKING PLANS { Horiz 1 inch = 50 Feet
Vert 1 inch = 50 Feet
Cross-Sections 1 inch = 10 Feet
LAYOUT, 1 inch = 2640 Feet

DESIGN DESIGNATION
A.D.T. 1966 =
A.D.T. 1985 = 5000
DHV = 250
D (DIRECTIONAL DISTRIBUTION) =
T (HEAVY COMMERCIAL) 1985 = 5%
DESIGN SPEED =
DESIGN LOAD = 9 TON
SOILS FACTOR = 100%

SHEET NO	DESCRIPTION
1	TITLE SHEET
2	TYPICAL SECTIONS & ESTIMATED QUANTITIES
3	DRAINAGE STRUCTURE CHART
4-7	PLAN PROFILES & CONSTRUCTION PLAN
8-19	CROSS SECTIONS



PLANS SYMBOLS

STATE LINE	SPRINGS
COUNTY LINE	MAWSH
TOWNSHIP OR RANGE LINE	TIMBER
SECTION LINE	ORCHARD
QUARTER LINE	BRUSH
SIXTEENTH LINE	NURSERY
RIGHT-OF-WAY LINE	CATCH BASIN
PRESENT RIGHT-OF-WAY LINE	FIRE HYDRANT
CONTROL OF ACCESS LINE	CATTLE GUARD
PROPERTY LINE (Except Land Lines)	OVERPASS (Highway Over)
VACATED PLATTED PROPERTY	UNDERPASS (Highway Under)
CORPORATE OR CITY LIMITS	BRIDGE
TRUNK HIGHWAY CENTER LINE	BUILDING (One Story Frame)
RETAINING WALL	F-FRAME C-CONCRETE
RAILROAD	S-STONE T-TILE
RAILROAD RIGHT-OF-WAY LINE	B-BRICK ST-STUCCO
RIVER OR CREEK	IRON PIPE OR ROD
DRY RUN	MONUMENT (STONE, CONCRETE, OR METAL)
DRAINAGE DITCH	WOODEN HUB
DRAIN TILE	GRAVEL PIT
CULVERT	SAND PIT
DROP INLET	BORROW PIT
GUARD RAIL	ROCK QUARRY
BARBED WIRE FENCE	
WOVEN WIRE FENCE	
CHAIN LINK FENCE	
RAILROAD SNOW FENCE	
STONE WALL OR FENCE	
HEDGE	
RAILROAD CROSSING SIGN	
RAILROAD CROSSING BELL	
ELECTRIC WARNING SIGN	
CROSSING GATE	
MEANDER CORNER	

UTILITIES SYMBOLS

POWER POLE LINE	CONDUIT
TELEPHONE OR TELEGRAPH POLE LINE	TELEPHONE CABLE IN CONDUIT
JOINT TELEPHONE AND POWER ON POWER POLES	ELECTRIC CABLE IN CONDUIT
ON TELEPHONE POLES	TELEPHONE MANHOLE
ANCHOR	ELECTRIC MANHOLE
STEEL TOWER	BURIED TELEPHONE CABLE
STREET LIGHT	BURIED ELECTRIC CABLE
PEDESTAL TELEPHONE CABLE TERMINAL	AERIAL TELEPHONE CABLE
GAS MAIN	SEWER, (SANITARY OR STORM)
WATER MAIN	SEWER MANHOLE

PIT DATA

PIT NO.	Located in Dead Haul
PIT NO.	Located in Dead Haul
PIT NO.	Located in Dead Haul
PIT NO.	Located in Dead Haul

— SPECIFICATIONS —
THE "STANDARD SPECIFICATIONS FOR HIGHWAY CONSTRUCTION" DATED JANUARY 1, 1964 AS AMENDED BY "SUPPLEMENTAL SPECIFICATIONS" DATED FEBRUARY 1, 1966 SHALL GOVERN.

I HEREBY CERTIFY THAT THIS PLAN WAS PREPARED BY ME OR UNDER MY DIRECT SUPERVISION AND THAT I AM A DULY REGISTERED PROFESSIONAL ENGINEER UNDER THE LAWS OF THE STATE OF MINNESOTA.
Paul J. Baker REG. NO. 2042 DATE 1-24-67
ENGINEER

RECOMMENDED FOR APPROVAL *David R. O'Brien* DATE 1-27-67
COUNTY ENGINEER

APPROVED _____ DATE _____
CHAIRMAN OF THE RAMSEY COUNTY BOARD

MINNESOTA STATE HIGHWAY DEPARTMENT

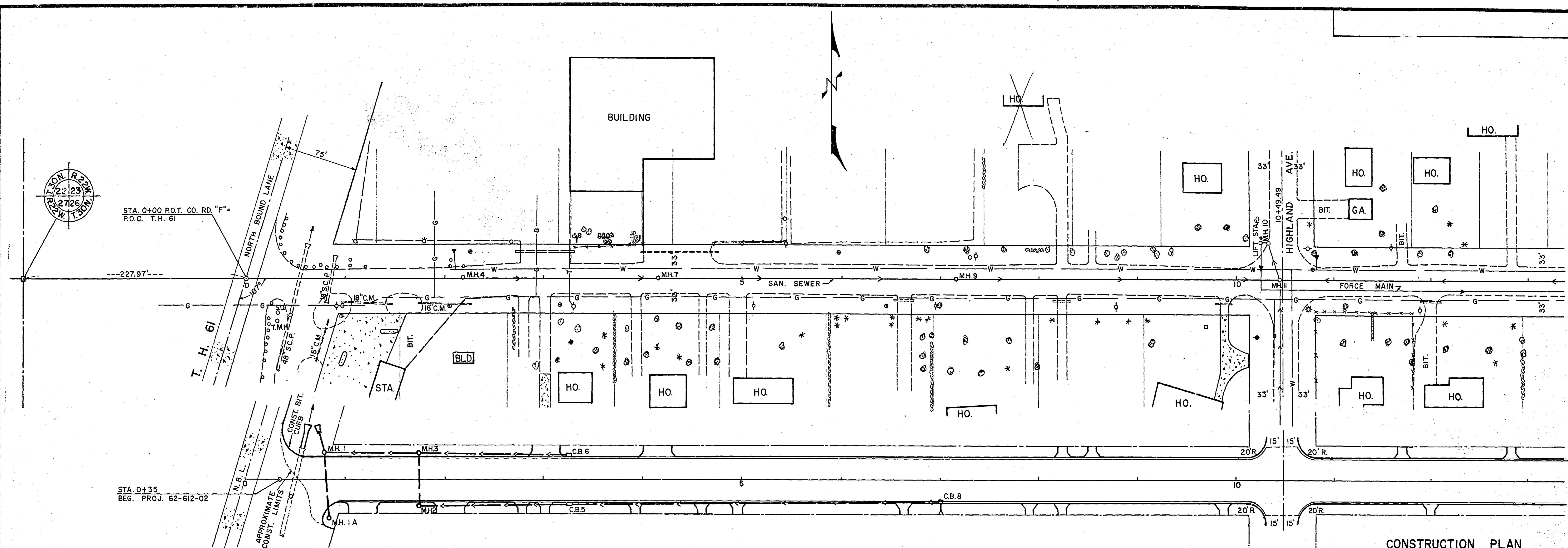
RECOMMENDED FOR APPROVAL _____ DATE _____

RECOMMENDED FOR APPROVAL _____ DATE _____
DISTRICT STATE AID ENGINEER

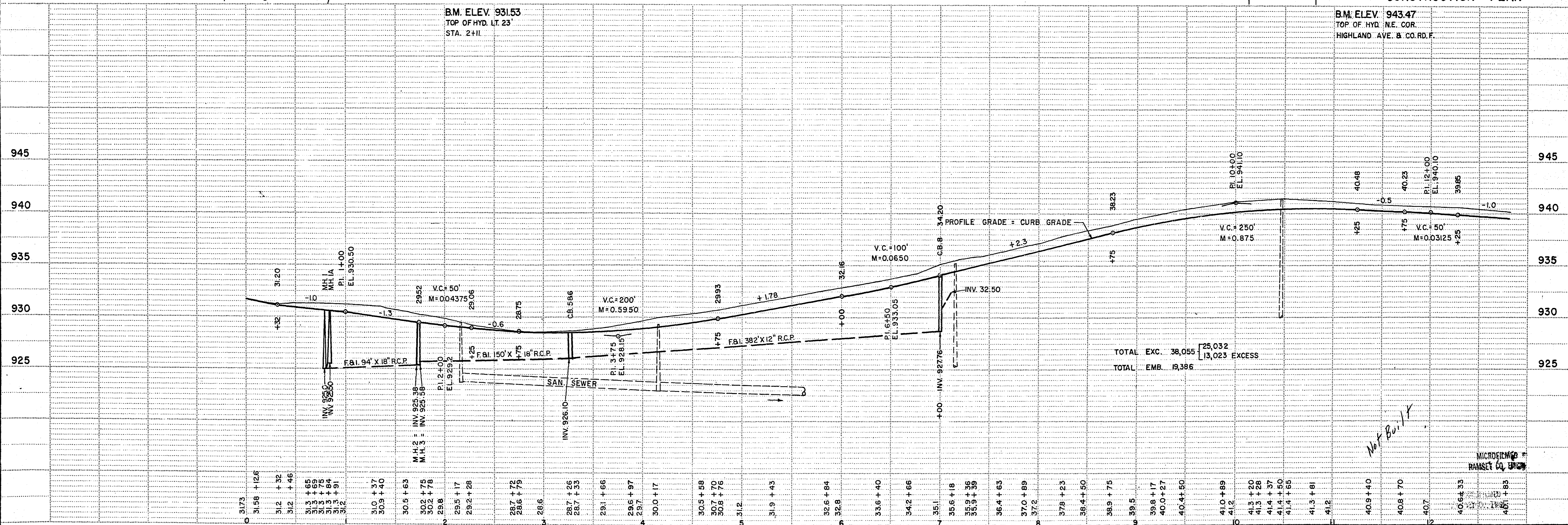
APPROVAL _____ DATE _____
STATE AID ENGINEER

Note: Davis plans to conform to White Bear Ave S.A. 8-22-69

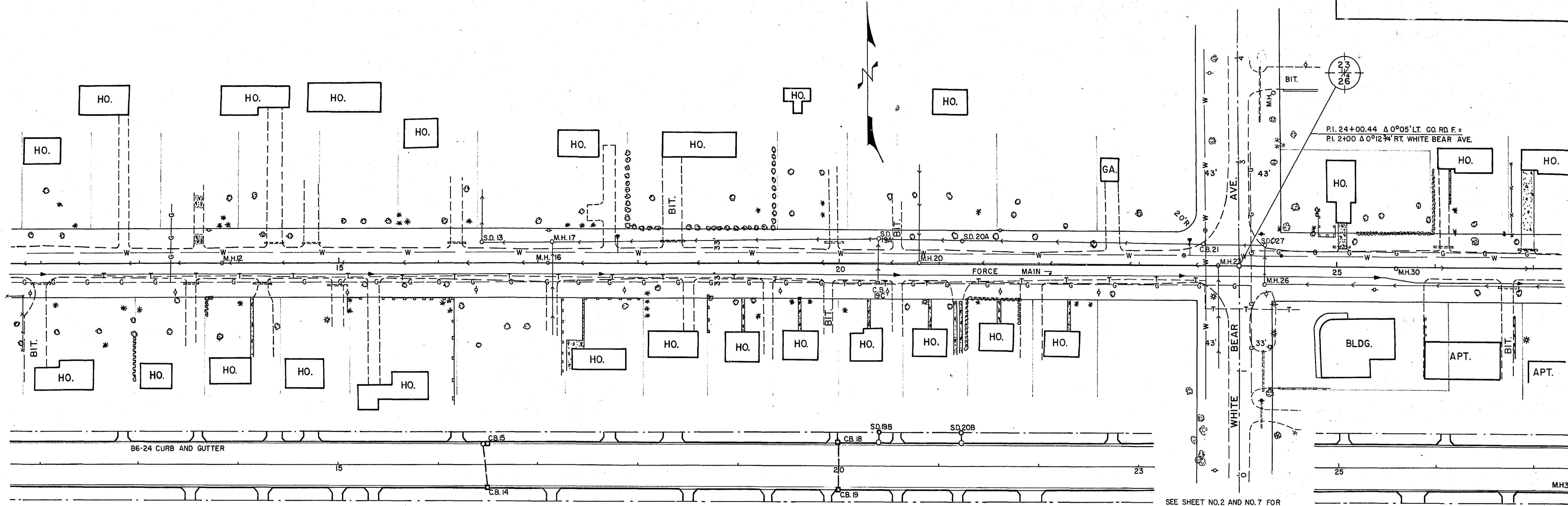
Not Built



CONSTRUCTION PLAN

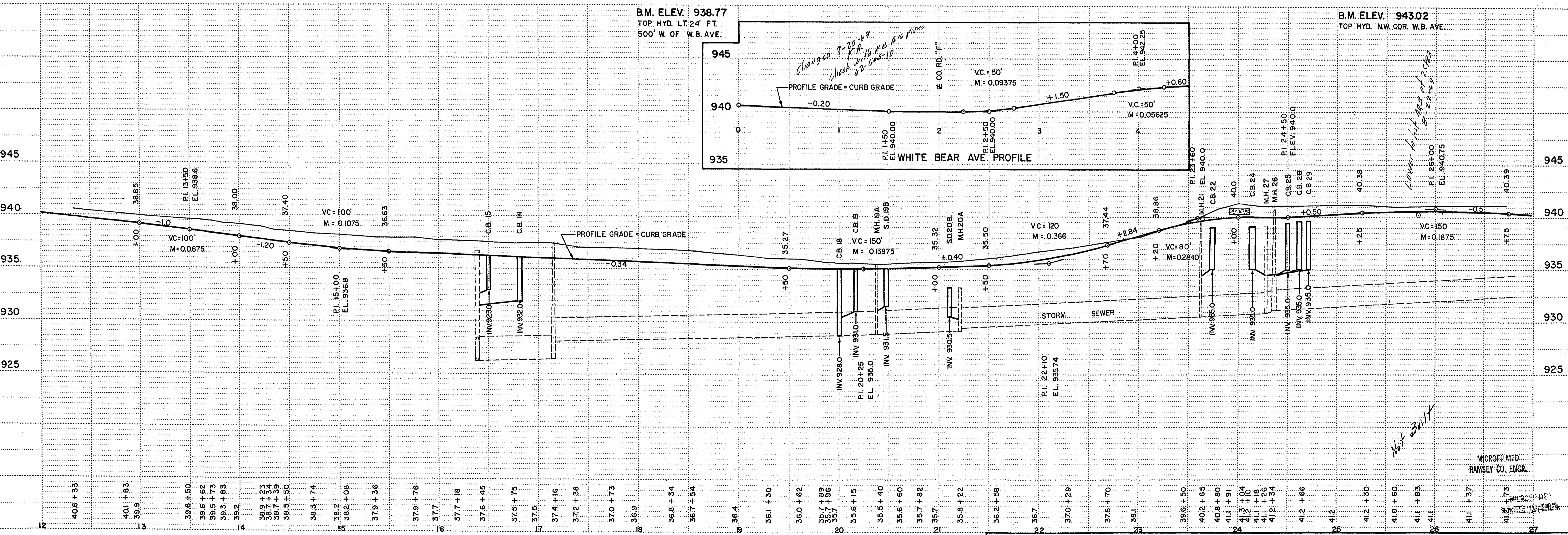


NORSTAR © NO. 102, ST. PAUL, MINNEAPOLIS, MINNESOTA ©



SEE SHEET NO. 2 AND NO. 7 FOR CONSTRUCTION PLAN OF WHITE BEAR AVE. INTERSECTION.

CONSTRUCTION PLAN

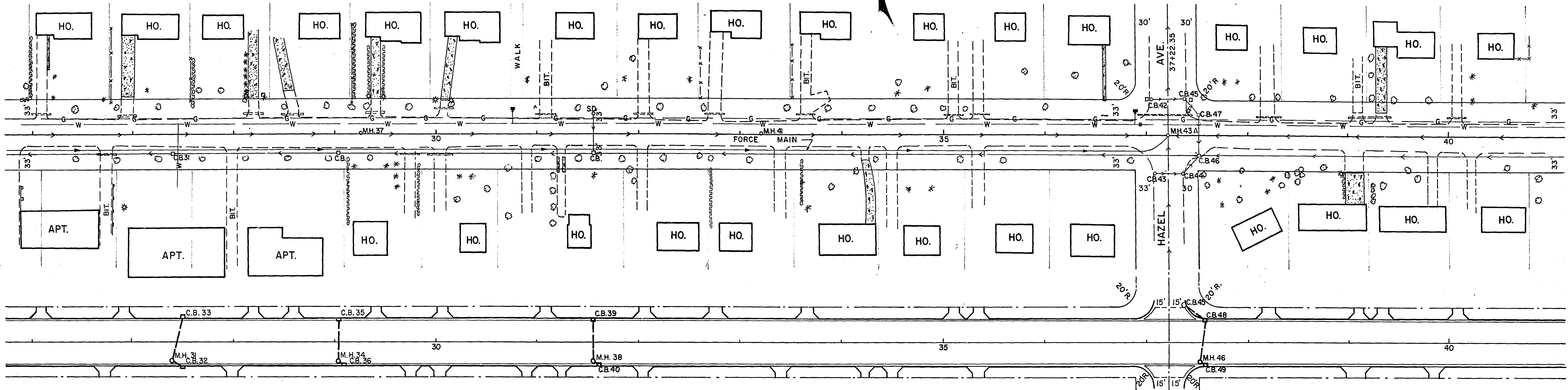


B.M. ELEV. 938.77
TOP HYD. LT. 24' FT.
500' W. OF W.B. AVE.

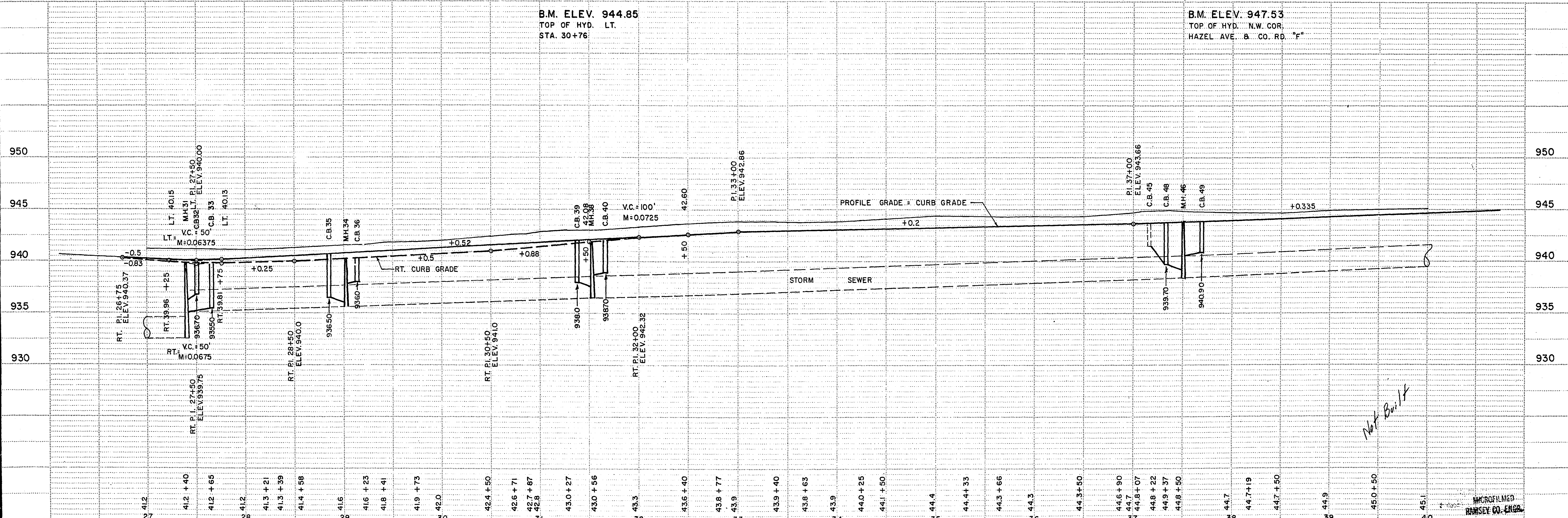
B.M. ELEV. 943.02
TOP HYD. N.W. COR. W.B. AVE.

MICROFILMED
RAMSEY CO. ENGR.

6866



CONSTRUCTION PLAN



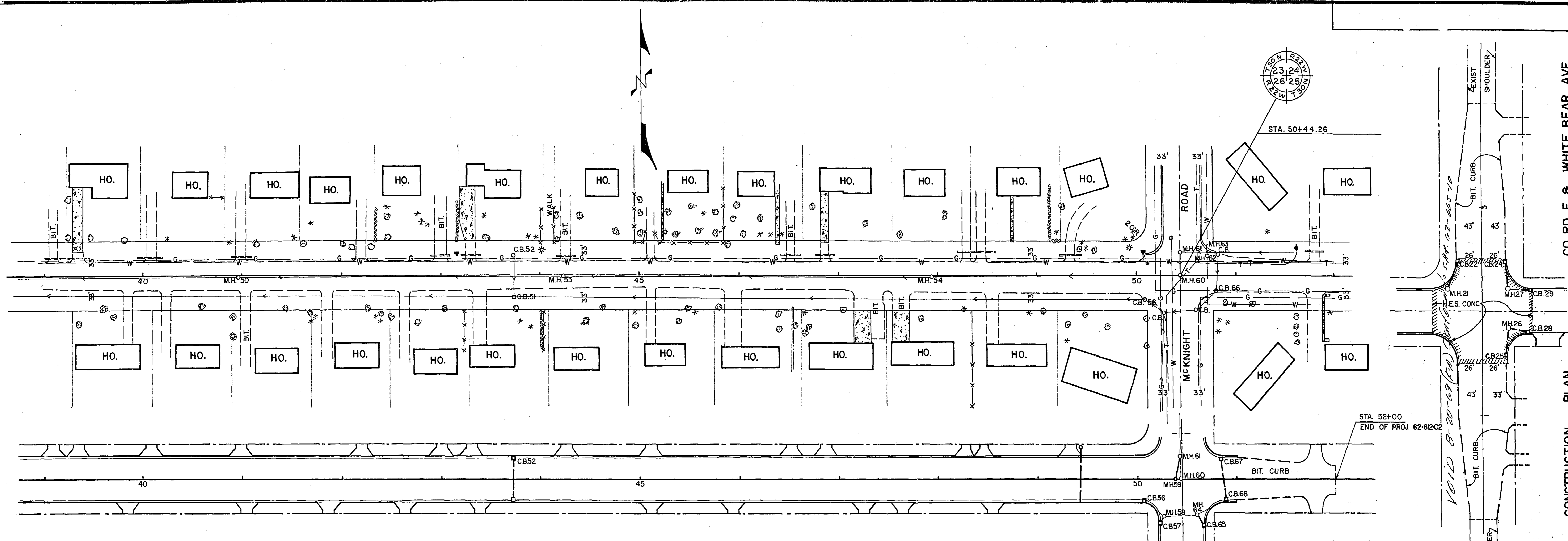
S.A.P. NO. 62-612-02

Sheet No. 6 of 19 Sheets

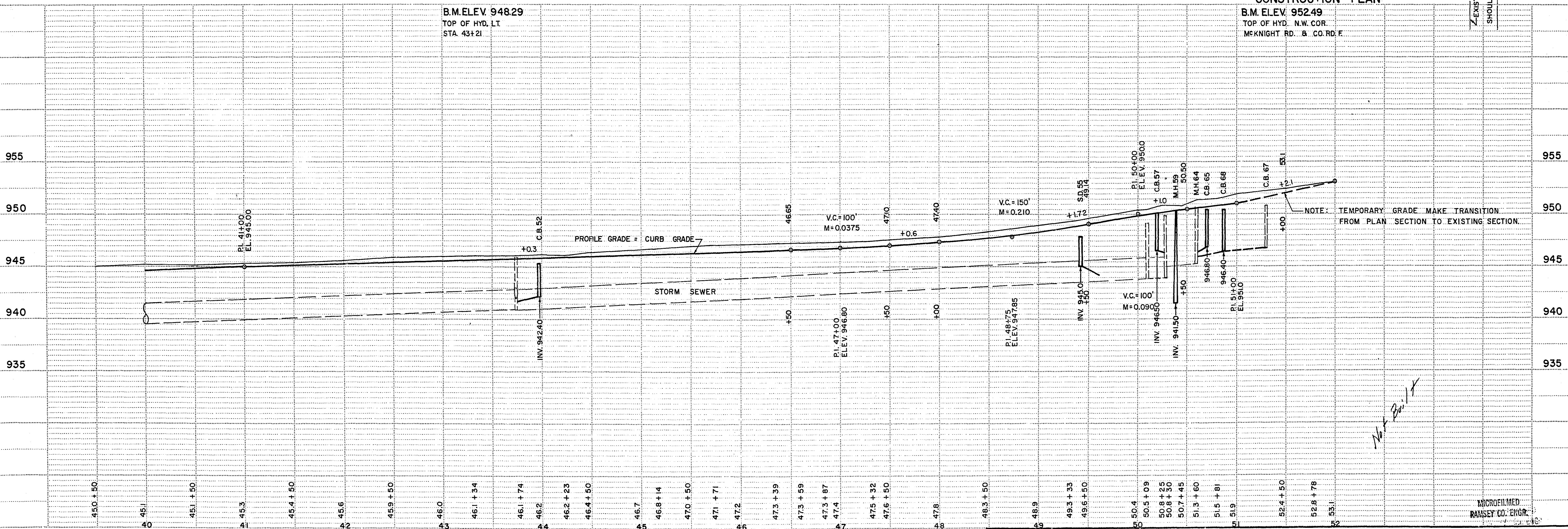
6866

REGISTERED PROFESSIONAL ENGINEER - MINNESOTA

MACROFILMED
RANNEY CO. ENGR.



CONSTRUCTION PLAN



B.M. ELEV. 948.29
TOP OF HYD. LT.
STA. 43+21

B.M. ELEV. 952.49
TOP OF HYD. N.W. COR.
MCKNIGHT RD. & CO. RD. F.

NOTE: TEMPORARY GRADE MAKE TRANSITION FROM PLAN SECTION TO EXISTING SECTION.

Not Built

NORSTAR © NO. 102 - ST. PAUL - MINNEAPOLIS, MINNESOTA ©