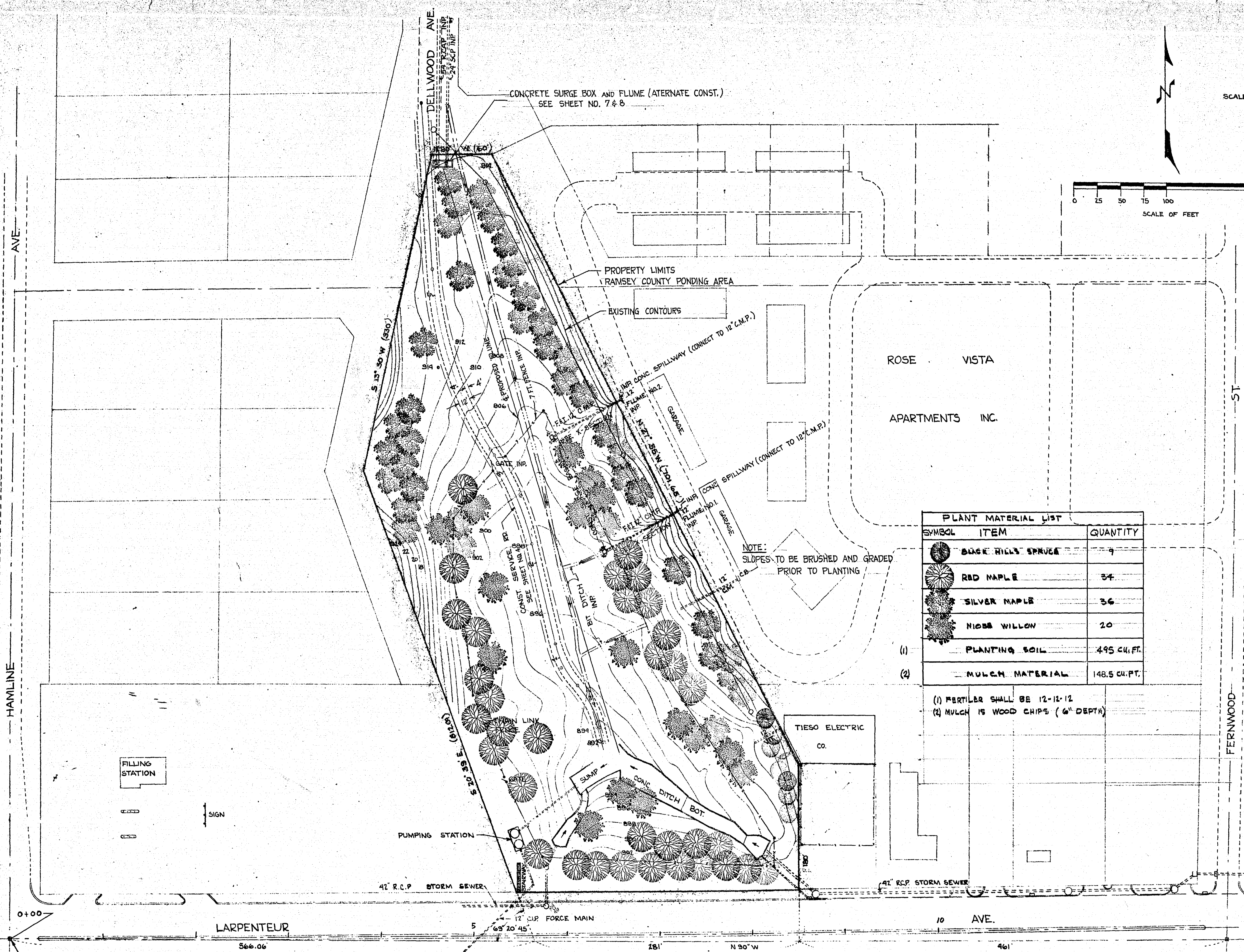
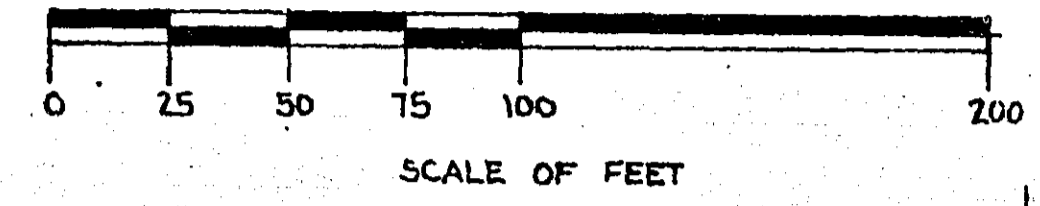


SCALE 1" = 50'

B.M. 946.74
TOP HYD. & W. COR
HAMLINE / LARPEN TEUR



PLANT MATERIAL LIST

SYMBOL	ITEM	QUANTITY
(Symbol)	BUCK HILLS SPRUCE	9
(Symbol)	RED MAPLE	34
(Symbol)	SILVER MAPLE	36
(Symbol)	NIOBE WILLOW	20
(1)	PLANTING SOIL	495 CU. FT.
(2)	MULCH MATERIAL	148.5 CU. FT.

NOTE:
SLOPES TO BE BRUSHED AND GRADED
PRIOR TO PLANTING

(1) FERTILIZER SHALL BE 12-12-12
(2) MULCH IS WOOD CHIPS (6" DEPTH)

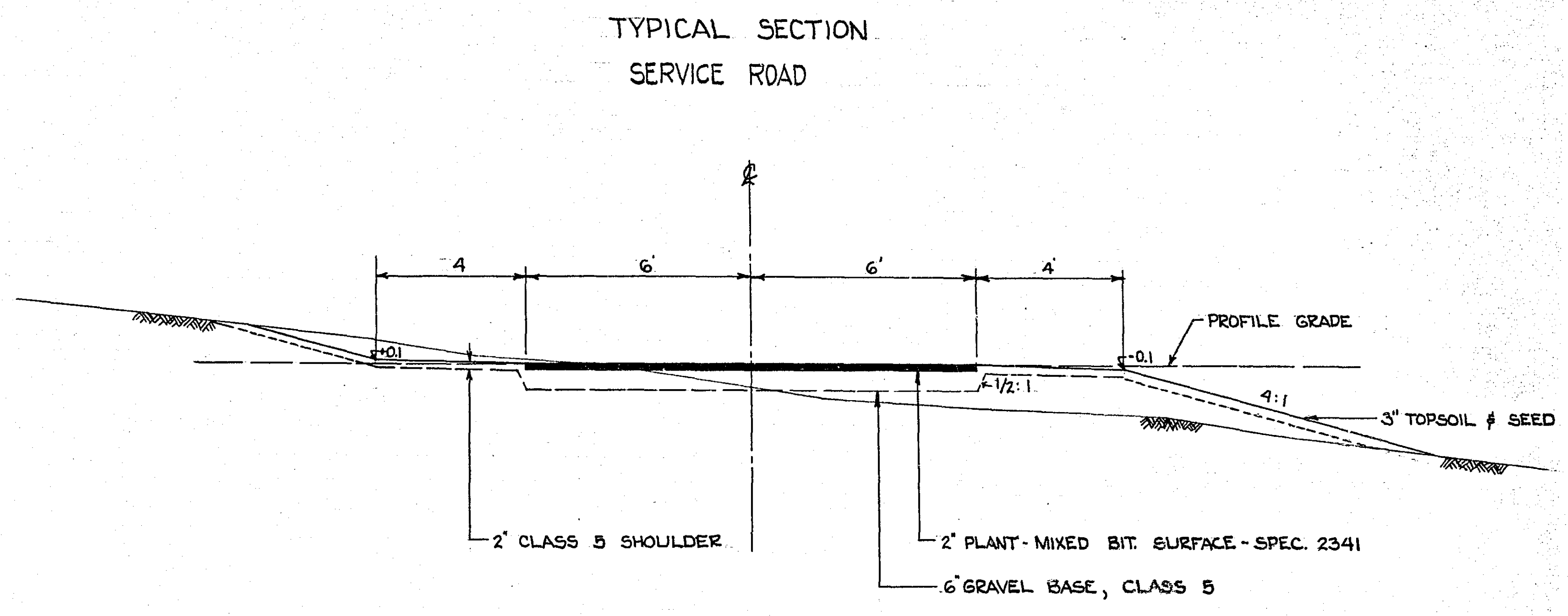
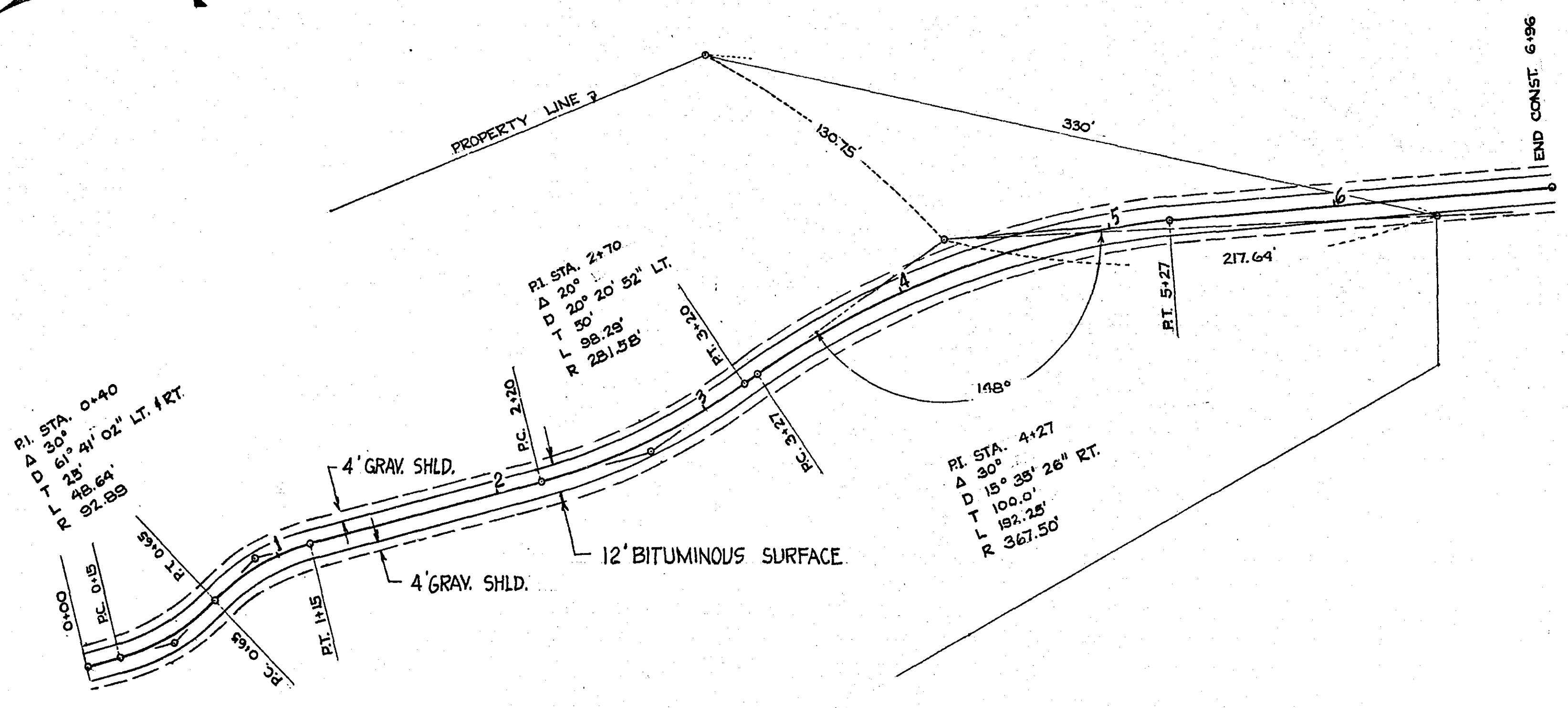
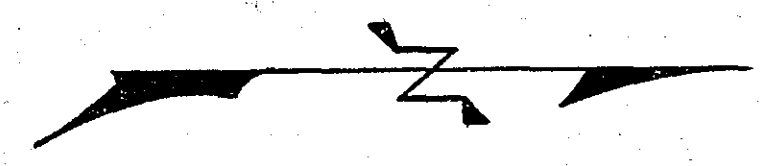
RAMSEY COUNTY ENGINEER'S DEPT
ROADSIDE DEVELOPMENT PROJECT
RAMSEY COUNTY PONDING AREA
LARPENTER AVE, CSAH. NO. 30

DESIGNED	DEANE R. ANKLAN	SURVEY
DRAWN R.W.	COUNTY ENGINEER	
CHECKED	BY	ORTUM
REVISED 3-18-66	DATE 1-18-66	FILE

MICRO-FILMED

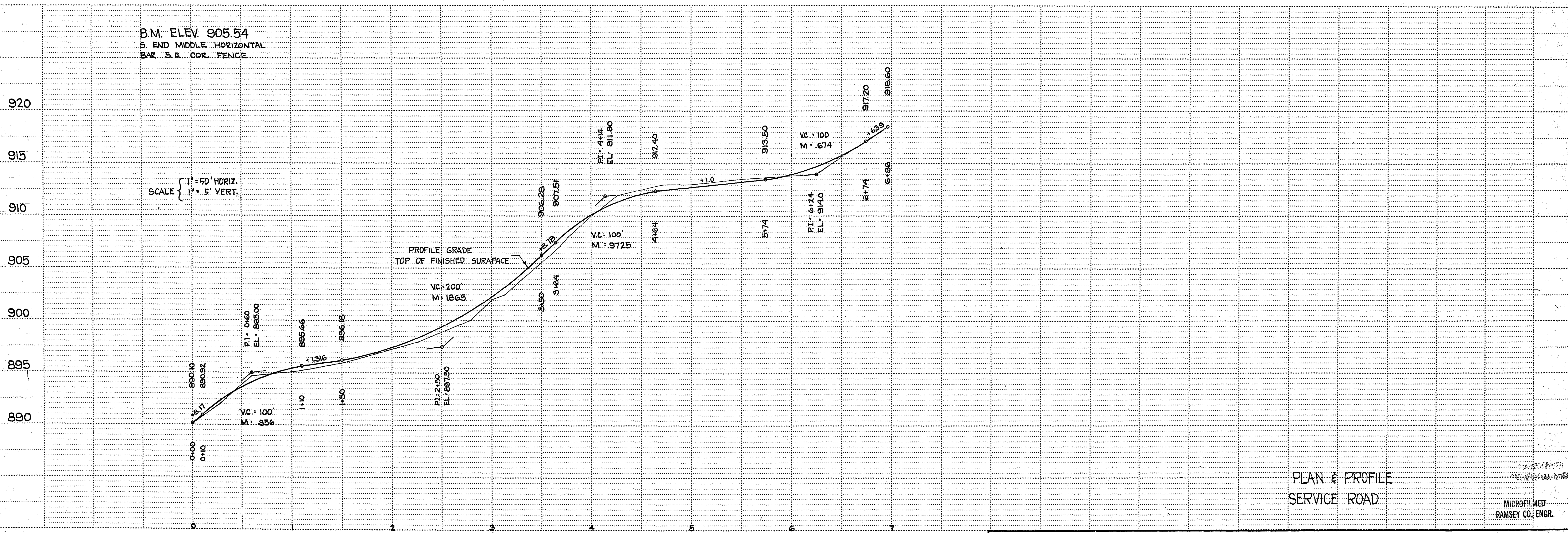
MICROFILMED
RAMSEY CO. ENGR.
SHEET NO. 2 OF 6

6865



B.M. ELEV. 905.54
S. END MIDDLE HORIZONTAL
BAR S.E. COR. FENCE

SCALE
1" = 50' HORIZ.
1" = 5' VERT.



PLAN & PROFILE
SERVICE ROAD

MICROFILMED
RAMSEY CO. ENGR.

6865