

**PLANS SYMBOLS**

STATE LINE	SPRINGS
COUNTY LINE	MARSH
TOWNSHIP OR RANGE LINE	TIMBER
SECTION LINE	ORCHARD
QUARTER LINE	BRUSH
SIXTEENTH LINE	NURSERY
RIGHT OF WAY LINE	CATCH BASIN
PRESENT RIGHT OF WAY LINE	FIRE HYDRANT
CONTROL OF ACCESS LINE	CATTLE GUARD
PROPERTY LINE (Except Land Lines)	OVERPASS (Highway Over)
VACATED PLATTED PROPERTY	UNDERPASS (Highway Under)
CORPORATE OR CITY LIMITS	BRIDGE
TRUNK HIGHWAY CENTER LINE	BUILDING (One Story Frame)
RETAINING WALL	F FRAME C CONCRETE
RAILROAD	S STONE T TILE
RAILROAD RIGHT OF WAY LINE	B BRICK ST STUCCO
RIVER OR CREEK	IRON PIPE OR ROD
DRY RUN	MONUMENT (STONE, CONCRETE, OR METAL)
DRAINAGE DITCH	WOODEN HUB
DRAIN TILE	GRAVEL PIT
CULVERT	SAND PIT
DROP INLET	BORROW PIT
GUARD RAIL	ROCK QUARRY
BARBED WIRE FENCE	
WOVEN WIRE FENCE	
CHAIN LINK FENCE	
RAILROAD SNOW FENCE	
STONE WALL OR FENCE	
HEGE	
RAILROAD CROSSING SIGN	
RAILROAD CROSSING BELL	
ELECTRIC WARNING SIGN	
CROSSING GATE	
MEANDER CORNER	

**UTILITIES SYMBOLS**

POWER POLE LINE	CONDUIT
TELEPHONE OR TELEGRAPH POLE LINE	TELEPHONE CABLE IN CONDUIT
JOINT TELEPHONE AND POWER ON POWER POLES	ELECTRIC CABLE IN CONDUIT
ON TELEPHONE POLES	TELEPHONE MANHOLE
ANCHOR	ELECTRIC MANHOLE
STEEL TOWER	BURIED TELEPHONE CABLE
STREET LIGHT	BURIED ELECTRIC CABLE
PEDESTAL TELEPHONE CABLE TERMINAL	AERIAL TELEPHONE CABLE
GAS MAIN	SEWER (SANITARY OR STORM)
WATER MAIN	SEWER MANHOLE

**PIT DATA**

PIT NO. _____	Located in Dead Haul
PIT NO. _____	Located in Dead Haul
PIT NO. _____	Located in Dead Haul
PIT NO. _____	Located in Dead Haul

**SPECIFICATIONS**

THE "SPECIFICATIONS FOR HIGHWAY CONSTRUCTION" DATED JANUARY 1, 1964 AS AMENDED BY SUPPLEMENTAL SPECIFICATIONS DATED FEBRUARY 1, 1966 SHALL GOVERN.

**OFFICE OF COUNTY ENGINEER  
RAMSEY COUNTY  
CONSTRUCTION PLAN FOR GRADING  
OWASSO BLVD. NO. CO. PROJ. 66-18  
BETWEEN: OWASSO ST. AND: CHANDLER AVE.**

GROSS LENGTH	1765 FEET	0.334 MILES
BRIDGES-LENGTH	0 FEET	0 MILES
EXCEPTIONS-LENGTH	0 FEET	0 MILES
NET LENGTH	1765 FEET	0.334 MILES

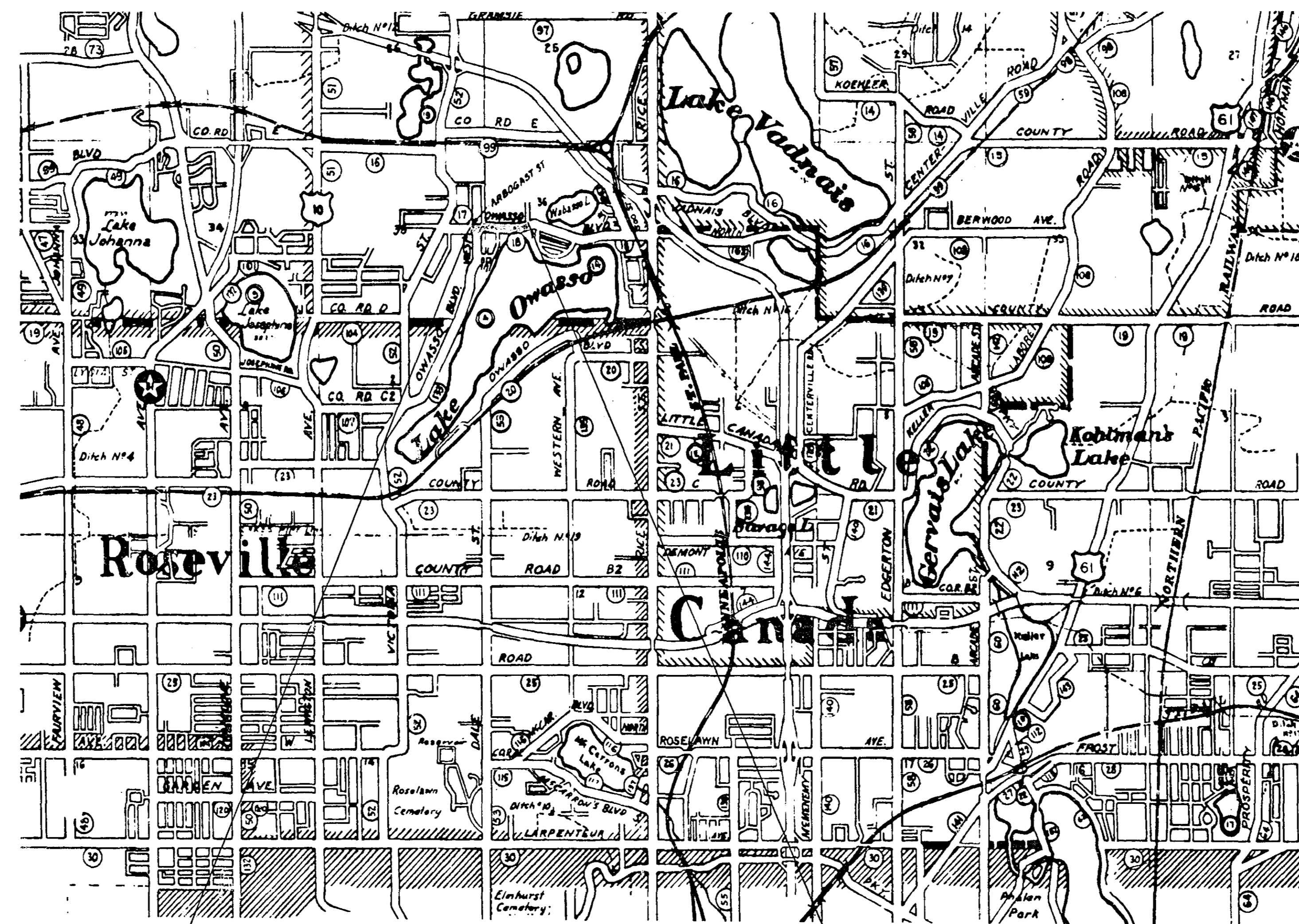
PLAN, 1 inch = 100 Feet  
 PROFILE, Horiz 1 inch = 50 Feet Vert 1 inch = 5 Feet  
 WORKING PLANS { Horiz 1 inch = 100 Feet  
 Vert 1 inch = 10 Feet  
 Cross-Sections 1 inch = 10 Feet  
 LAYOUT, 1 inch = 2640 Feet

**STATEMENT OF ESTIMATED QUANTITIES**

ITEM NO.	ITEM	UNIT	TOTAL ESTIMATED QUANTITIES
2101.501	CLEARING	ACRE	1
2101.506	GRUBBING	ACRE	1
2105.501	CLASS A EXCAVATION	C.Y.	12,169
2501.511	F&I 15" C.M.P. CULV.	L.F.	40

**INDEX**

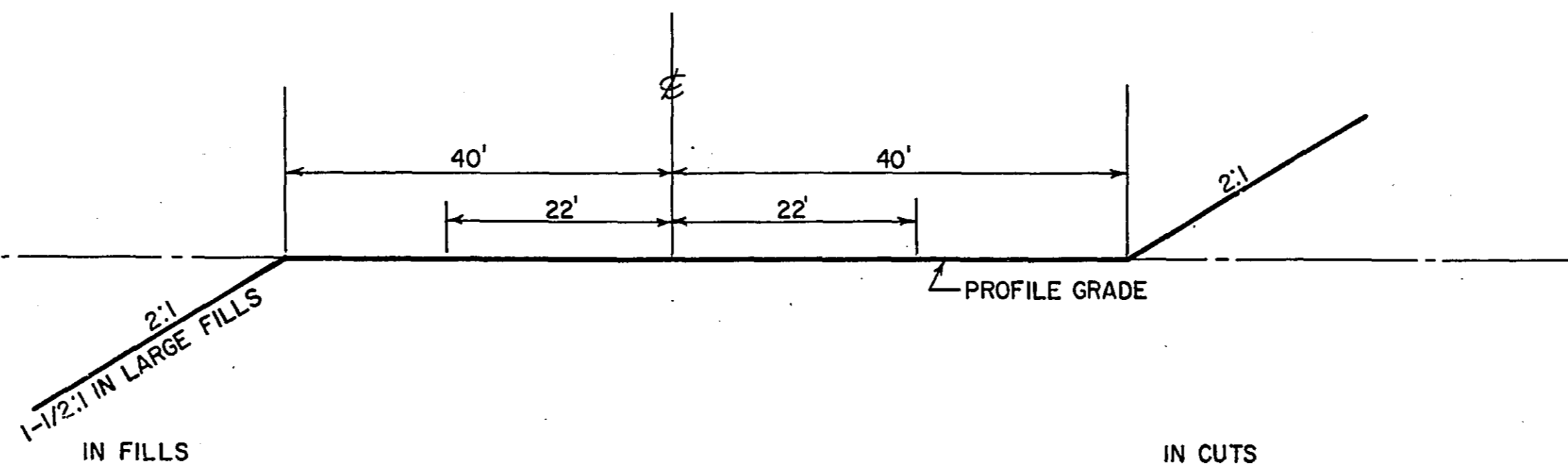
SHEET NO.	DESCRIPTION
1	TITLE SHEET & TYPICAL SECTION
2 & 3	PLAN PROFILES
4-8	CROSS SECTIONS



BEGIN PROJECT STA. 12+85

END PROJECT STA. 80+50

**TYPICAL SECTION**

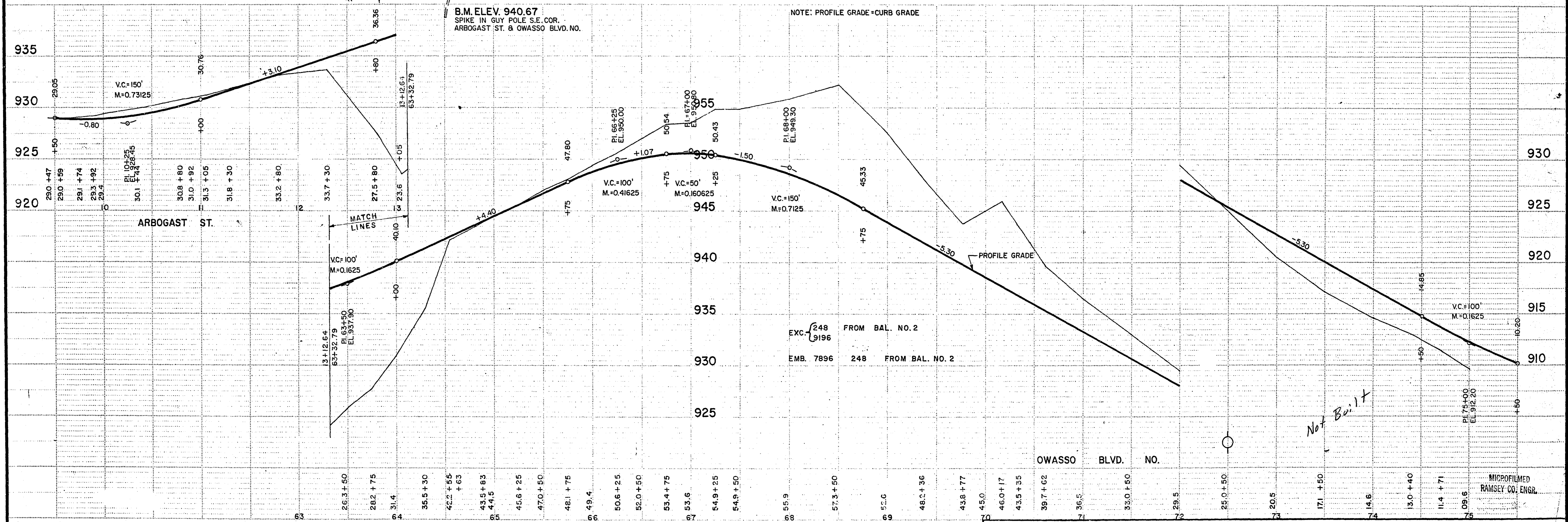
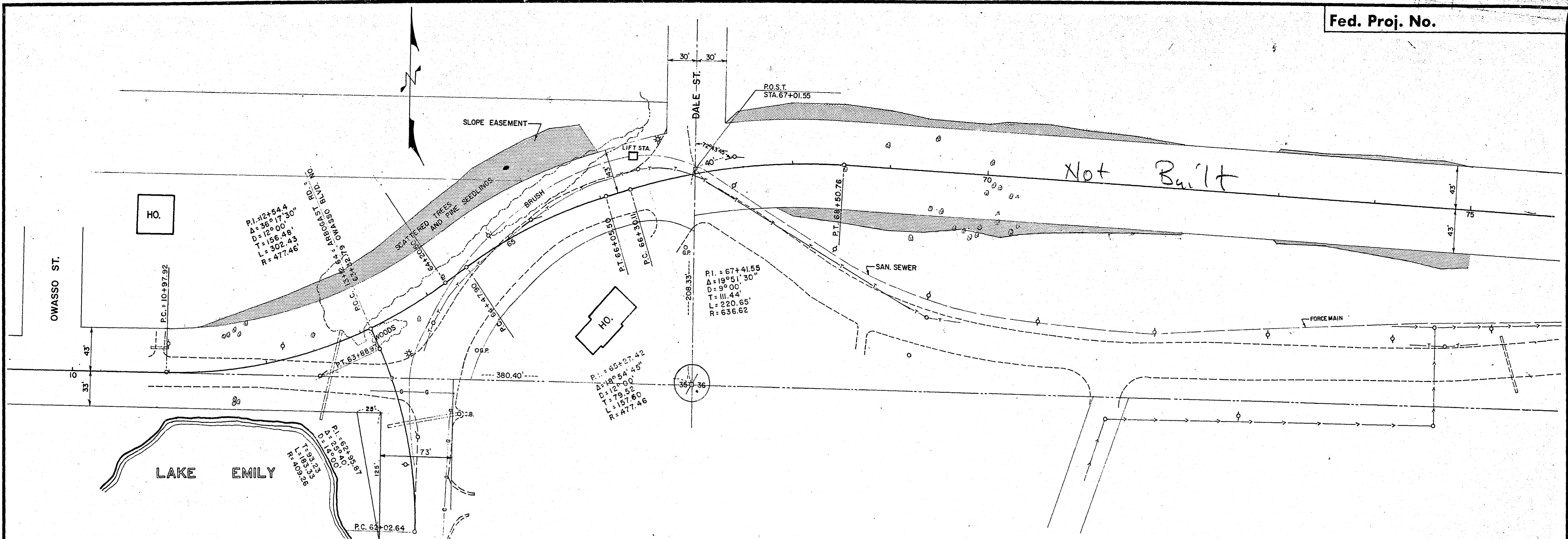


SEE CROSS SECTIONS

Not Built

I HEREBY CERTIFY THAT THIS PLAN WAS PREPARED BY ME OR UNDER MY DIRECT SUPERVISION AND THAT I AM A DULY REGISTERED PROFESSIONAL ENGINEER UNDER THE LAWS OF THE STATE OF MINNESOTA.  
*Wm. A. Cook* ENGINEER REG. NO. 2042 DATE 7-1-66  
 RECOMMENDED FOR APPROVAL *Pearl K. Ambler* COUNTY ENGINEER DATE 8-31-66  
 APPROVED *Phonak Bytner* CHAIRMAN OF THE RAMSEY COUNTY BOARD DATE 9-12-66



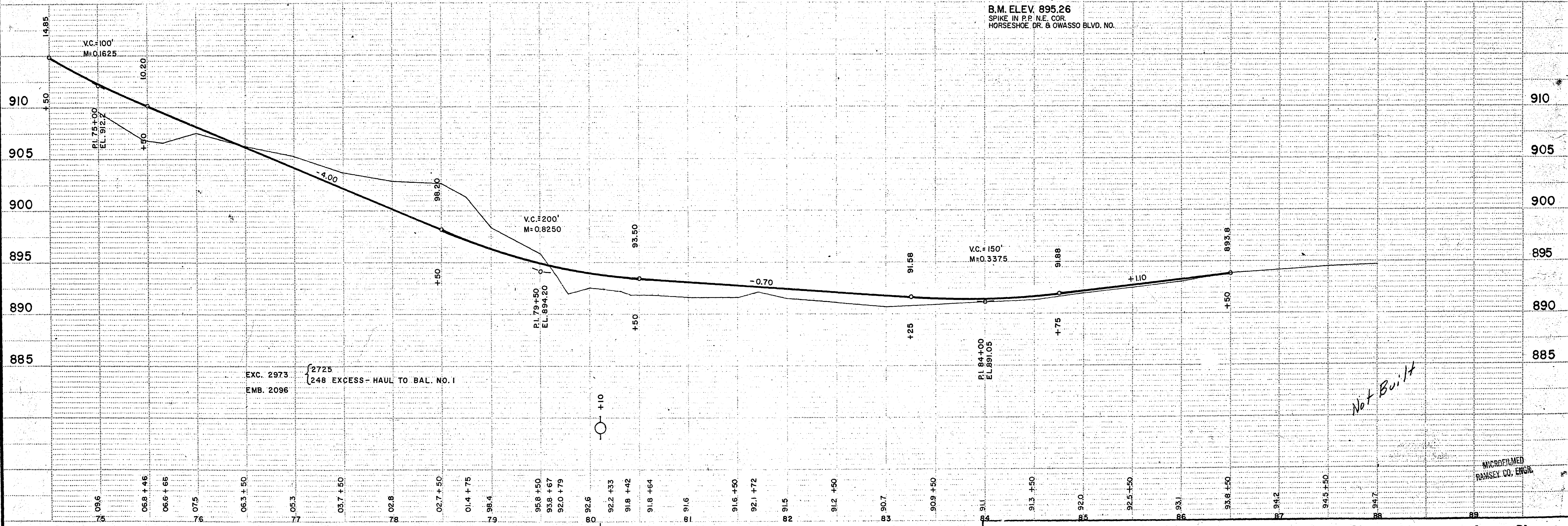
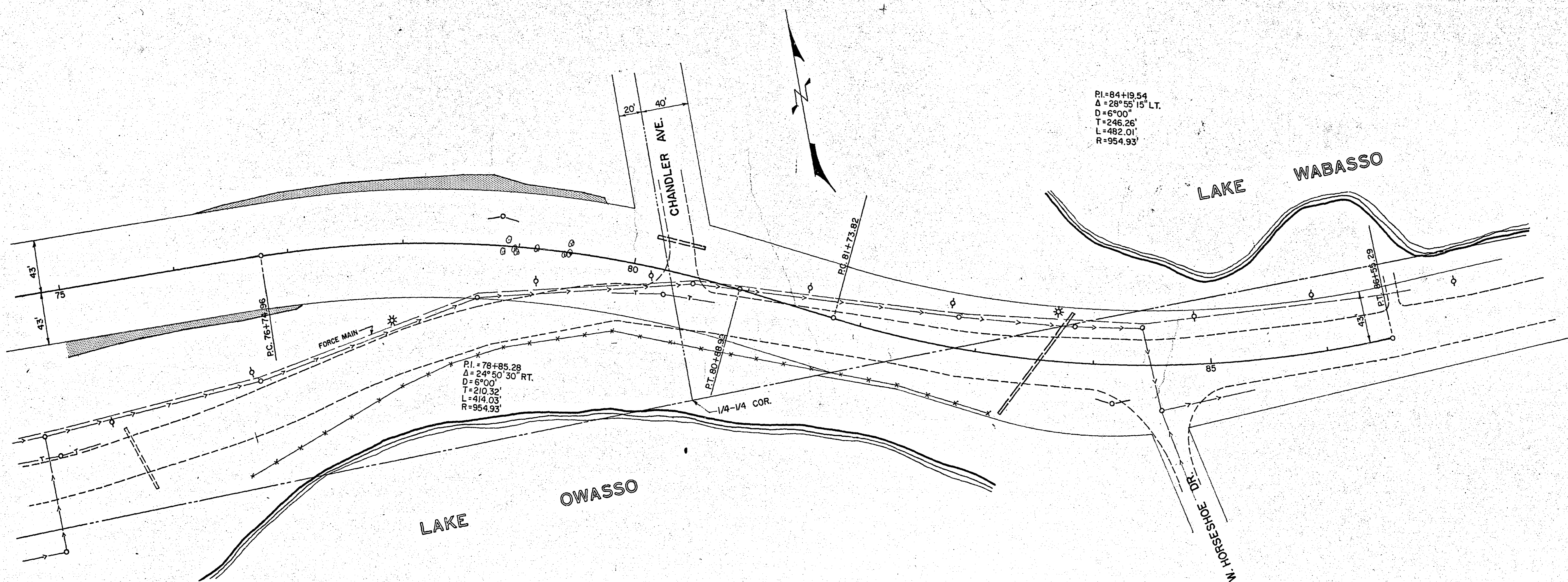


NORSTAR & NO. 12 ST. PAUL - MINNEAPOLIS, MINNESOTA

MICROFILMED  
RAMSEY CO. ENGR.



80+40 LT. 25'  
F.B.I. 15' X 42' C.M. CULV.



NOTES: 1. NO. 12 - ST. PAUL - MINNEAPOLIS, MINNESOTA

BAL. NO. 2

BAL. NO. 2

CO. PROJ. 66-18

Sheet No. 3 of 8 Sheets

G860

MICROFILMED  
RAMSEY CO. ENGR.