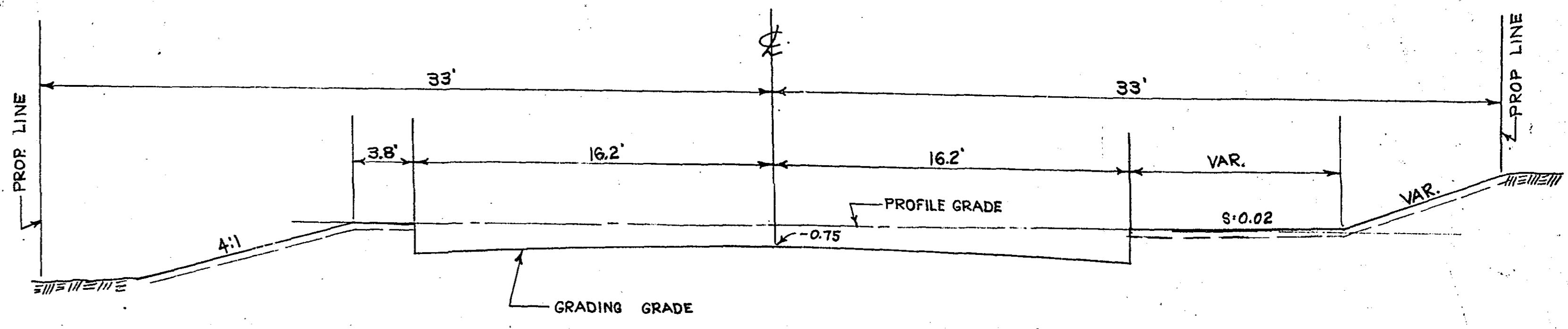
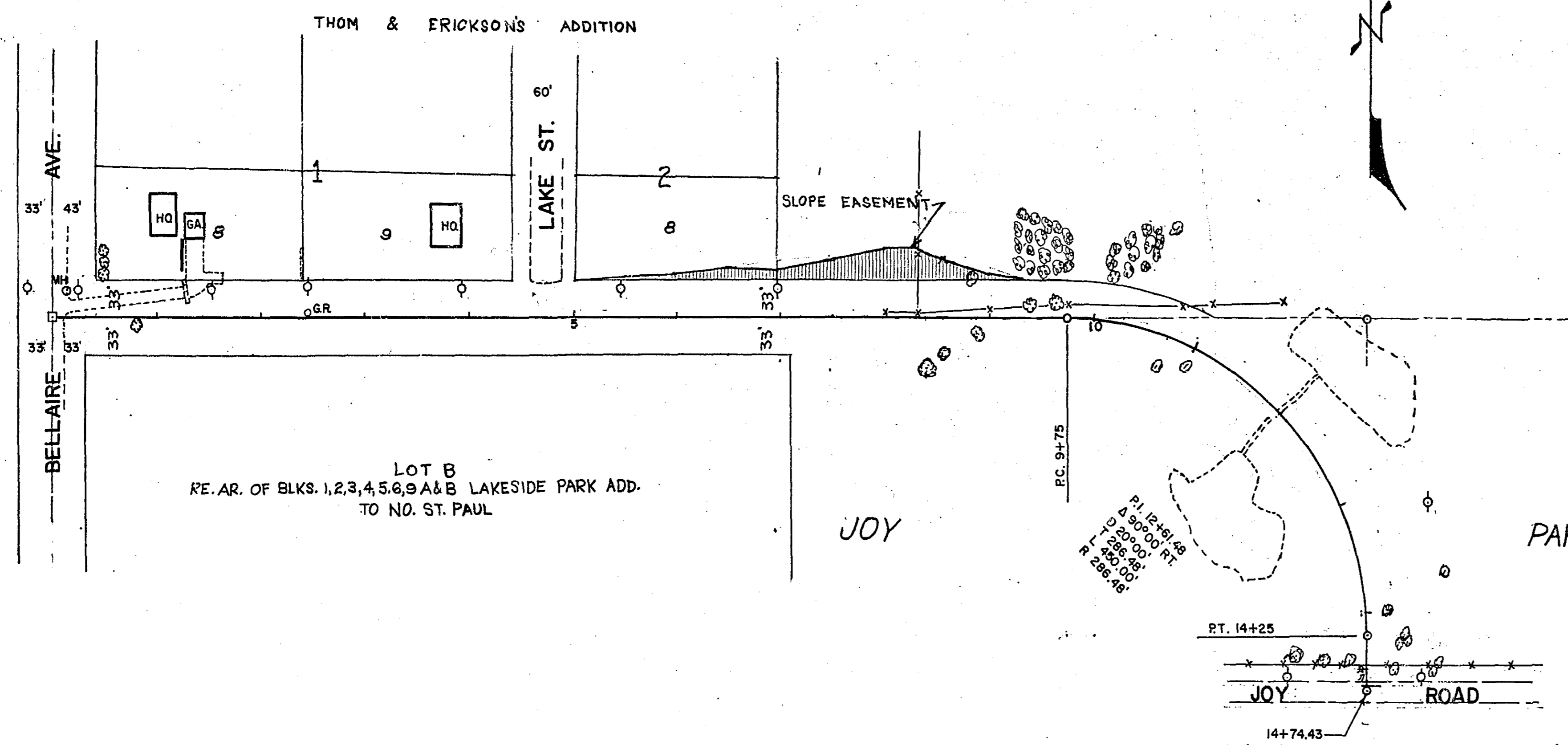


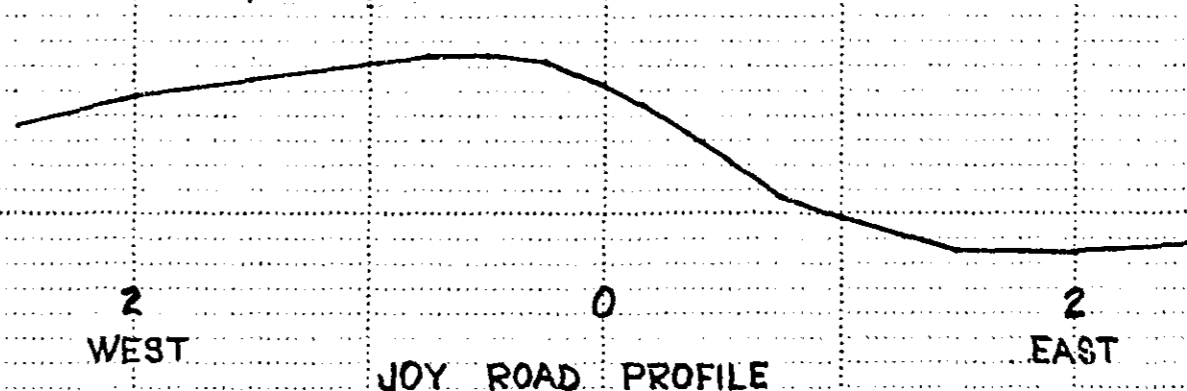
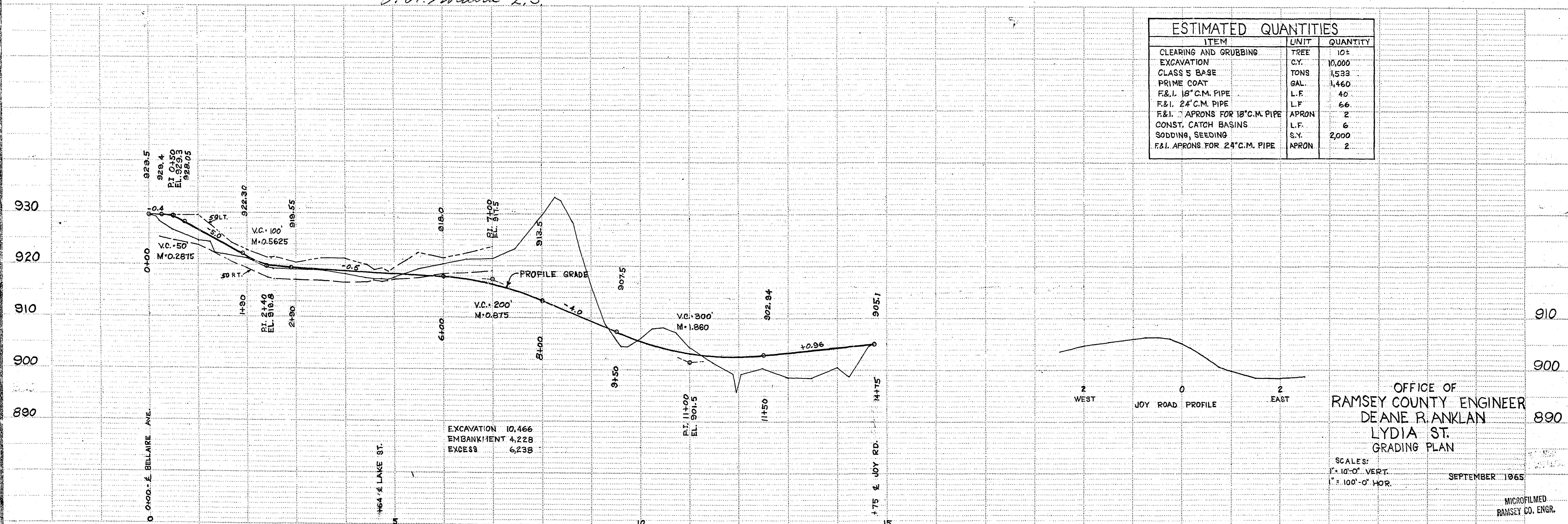
TYPICAL SECTION

12+00 CONST. C.B. RT<. TYPE LP6-3
ST. PLATE 4016
F&I. 18"X20' C.M. RT<.
F&I. 2' APRONS FOR 18" C.M. PIPE
11+96 F&I. 24"X66' C.M.P.+2 APRONS



*Elevations shown on this plan are
100 feet lower than sea level datum.
1-08-1976
A. R. Kwidzva L.S.*

ESTIMATED QUANTITIES		
ITEM	UNIT	QUANTITY
CLEARING AND GRUBBING	TREE	10±
EXCAVATION	C.Y.	10,000
CLASS 5 BASE	TONS	1,533
PRIME COAT	GAL.	1,460
F&I. 18" C.M. PIPE	L.F.	40
F&I. 24" C.M. PIPE	L.F.	66
F&I. APRONS FOR 18" C.M. PIPE	APRON	2
CONST. CATCH BASINS	L.F.	6
SODDING, SEEDING	S.Y.	2,000
F&I. APRONS FOR 24" C.M. PIPE	APRON	2



OFFICE OF
RAMSEY COUNTY ENGINEER
DEANE R. ANKLAN
LYDIA ST.
GRADING PLAN
SEPTEMBER 1965

SCALES:
1" = 10'-0" VERT.
1" = 100'-0" HOR.
MICROFILMED
RAMSEY CO. ENGR.