

CONVENTIONAL SIGNS

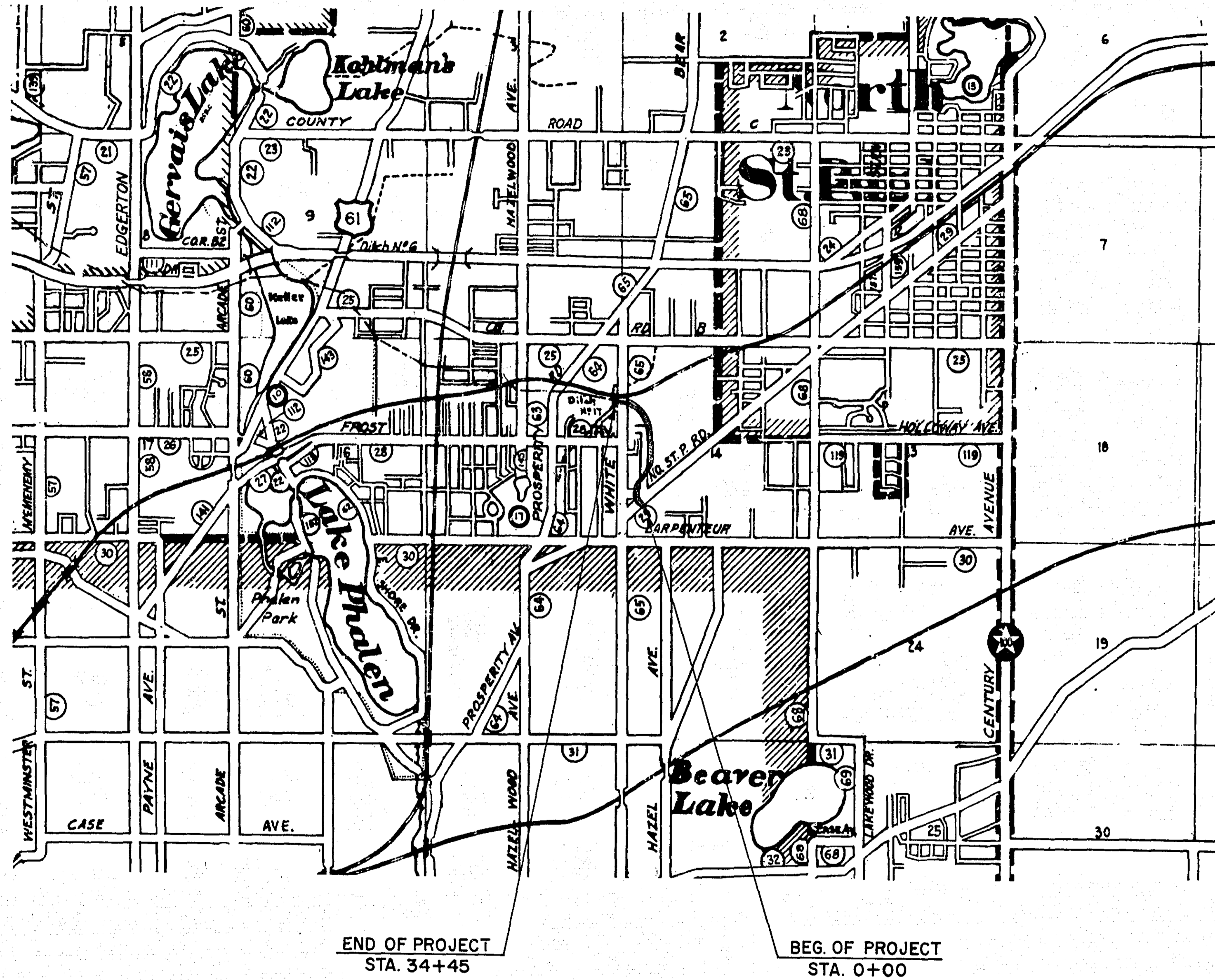
STATE LINE	-----	TIMBER	-----
COUNTY LINE	-----	BRUSH	-----
TOWNSHIP OR RANGE LINE	-----	ORCHARD	-----
SECTION LINE	-----	ROCK LEDGE	-----
QUARTER LINE	-----	SAND	-----
SIXTEENTH LINE	-----	EDGE OF CUT	-----
RIGHT-OF-WAY LINE	-----	TOE OF EMBANKMENT	-----
PRESENT ROAD 1/4 LINE	-----	CATCH BASIN	-----
LIMITED ACCESS	-----	MANHOLE	-----
PROPERTY LINE (Sixty-Foot Lines)	-----	DROP INLET	-----
VACATED PLATTED PROPERTY	-----	FIRE HYDRANT	-----
CORPORATE OR CITY LIMITS	-----	ARC LAMP	-----
TRUNK HIGHWAY CENTER LINE	-----	OTHER LAMPS (Two Kind)	-----
RETAINING WALL	-----	RAILROAD CROSSING SIGN	-----
STEAM RAILROAD	-----	RAILROAD CROSSING BELL	-----
ELECTRIC RAILROAD	-----	ELECTRIC WARNING SIGN	-----
RAILROAD RIGHT-OF-WAY LINE	-----	CROSSING GATE	-----
CREEK	-----	CATTLE GUARD	-----
RAPIDS OR WATERFALL	-----	OVERHEAD (Highway Over)	-----
DRY RUN	-----	UNDERPASS (Highway Under)	-----
DRAINAGE DITCH	-----	ABUTMENT, WALL & PIER	-----
HIGH TENSION LINE	-----	BRIDGE	-----
POWER POLE LINE	-----	CULVERT	-----
TELEPHONE OR TELEGRAPH LINE	-----	BUILDING (One Story Frame)	-----
TELEPHONE CONDUIT	-----	C-CONCRETE S-STONE T-TILE B-BRICK ST-STUCCO	-----
GUARD RAIL	-----	HEDGE	-----
WIRE FENCE	-----	IRON PIPE	-----
RAILROAD SNOW FENCE	-----	STONE MONUMENT	-----
BOARD OR HIGHWAY SNOW FENCE	-----	WOOD STAKE OR HUB	-----
STONE WALL OR FENCE	-----	MEANDER CORNER	-----
GAS MAIN	-----		
WATER PIPE	-----		
SEWER PIPE	-----		
DRAIN TILE	-----		
GRAVEL PIT	-----		
SAND PIT	-----		
CLAY PIT	-----		
ROCK QUARRY	-----		
SPRINGS	-----		
MARSH	-----		



NOTE: SECTION NUMBERS READ FROM THE SOUTH

PIT DATA

PIT NO. _____	Located in _____
PIT NO. _____	Located in _____
PIT NO. _____	Located in _____
PIT NO. _____	Located in _____



**OFFICE OF COUNTY ENGINEER
RAMSEY COUNTY
CONSTRUCTION PLAN FOR
VAN DYKE ST. STORM SEWER
BETWEEN NO. ST. PAUL RD. AND COUNTY DITCH NO. 17
RAMSEY COUNTY PROJECT NO. 62-150**

GROSS LENGTH	3445 FEET	0.652 MILES
BRIDGES-LENGTH	0 FEET	0 MILES
EXCEPTIONS-LENGTH	0 FEET	0 MILES
NET LENGTH	3445 FEET	0.652 MILES

SCALES

PLAN, 1 inch = 100 Feet
PROFILE, Horiz. 1 inch = 100 Feet. Vert. 1 inch = 10 Feet.
WORKING PLANS { Horiz. 1 inch = 100 Feet Vert. 1 inch = 10 Feet Cross-Sections 1 inch = 10 Feet
LAYOUT, 1 inch = 2640 Feet

INDEX

SHEET NO.	DESCRIPTION
1	TITLE SHEET
2	ESTIMATED QUANTITIES & SPECIAL DETAIL SHEET
3	PLAN & PROFILE SHEET

Not Built

I HEREBY CERTIFY THAT THIS PLAN WAS PREPARED BY ME OR UNDER MY DIRECT SUPERVISION AND THAT I AM A DULY REGISTERED PROFESSIONAL ENGINEER UNDER THE LAWS OF THE STATE OF MINNESOTA.
Walter Anderson REG. NO. 2042 DATE 7-16-62

RECOMMENDED FOR APPROVAL *Dean R. Walker* COUNTY ENGINEER DATE 7-19-62

APPROVED *Geo. J. Janssen* CHAIRMAN OF RAMSEY COUNTY BOARD DATE 7-16-62

MINNESOTA STATE HIGHWAY DEPARTMENT

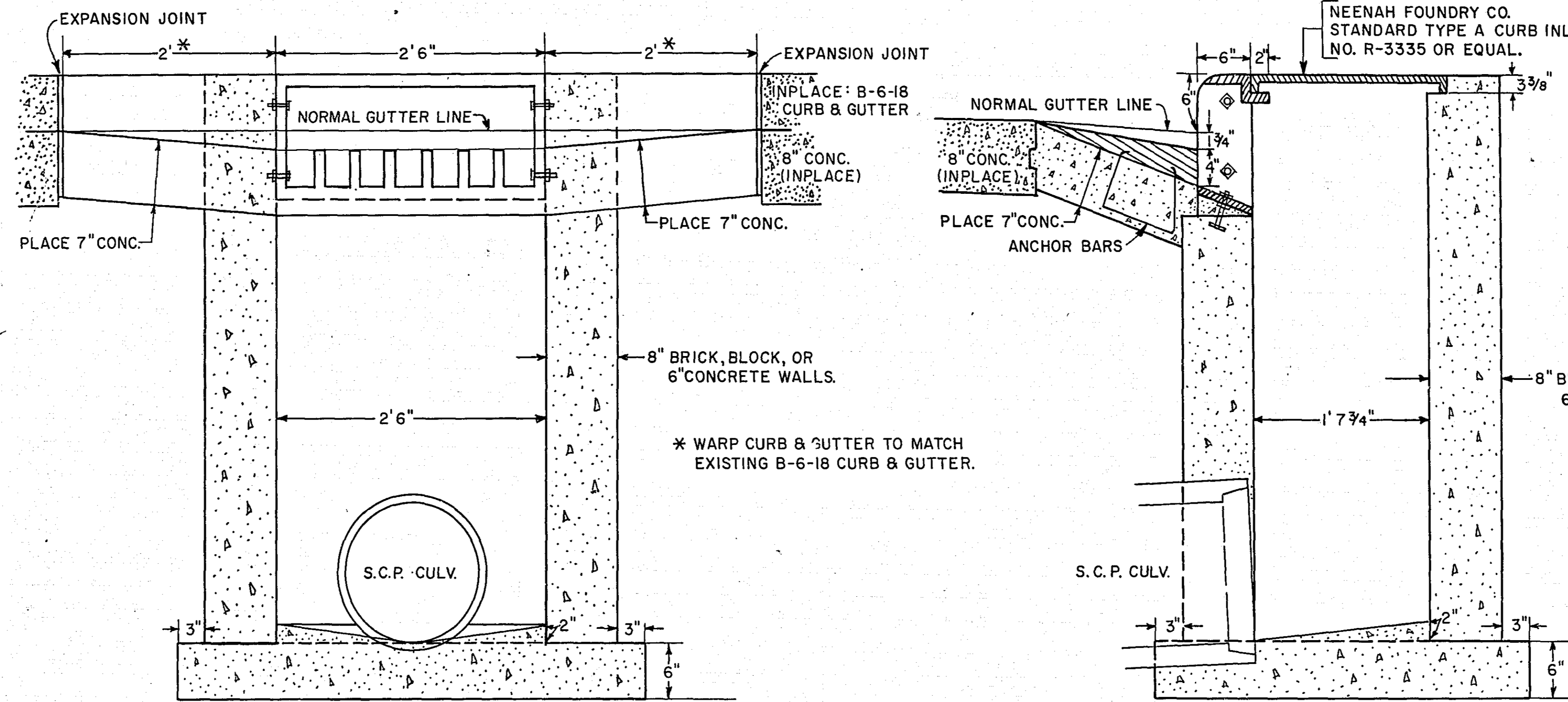
RECOMMENDED FOR APPROVAL _____ DISTRICT ENGINEER DATE _____

—SPECIFICATIONS—
THE "SPECIFICATIONS FOR HIGHWAY CONSTRUCTION" DATED MAY 1, 1959 SHALL GOVERN.

ESTIMATED QUANTITIES			
SPEC. NO.	DESCRIPTION	UNIT	TOTAL ESTIMATED QUANTITIES
2101.502	CLEARING	TREE	2
2101.507	GRUBBING	TREE	2
2104.503	REMOVE CURB AND GUTTER	LINEAR FOOT	60
2104.510	REMOVE FENCE, ORNAMENTAL	LINEAR FOOT	100
2104.510	REMOVE FENCE, WOODEN RAIL	LINEAR FOOT	40
2104.519	REMOVE INTEGRANT CURB	LINEAR FOOT	13
2503.512-12	F & I. R. C. PIPE SEWER, CLASS II	LINEAR FOOT	66
2503.512-18	F & I. R. C. PIPE SEWER, CLASS II	LINEAR FOOT	50
2503.512-24	F & I. R. C. PIPE SEWER, CLASS II	LINEAR FOOT	331
2503.512-27	F & I. R. C. PIPE SEWER, CLASS II	LINEAR FOOT	207
2503.512-30	F & I. R. C. PIPE SEWER, CLASS II	LINEAR FOOT	873
2503.512-33	F & I. R. C. PIPE SEWER, CLASS II	LINEAR FOOT	961
2503.512-36	F & I. R. C. PIPE SEWER, CLASS II	LINEAR FOOT	893
2503.512-48	F & I. R. C. PIPE SEWER, CLASS II	LINEAR FOOT	26
2506.506	CONSTRUCT MANHOLES, STA. 33+92.32	MANHOLE	1
2506.506	CONSTRUCT MANHOLES, TYPE A	LINEAR FOOT	69
2506.507	CONSTRUCT CATCH BASINS, R. C. 1	LINEAR FOOT	8.5
2506.507	CONSTRUCT CATCH BASINS, R. C. 2	LINEAR FOOT	31.6
2506.507	CONSTRUCT CATCH BASINS, TYPE A	LINEAR FOOT	6
2506.516	FURNISH & INSTALL CASTING ASSEMBLIES	ASSEMBLY	17
557.621	RESET WOOD RAIL FENCE	LINEAR FOOT	40
557.621	RESET ORNAMENTAL FENCE	LINEAR FOOT	100
2513.501	GROUTED RIPRAP	CUBIC YARDS	12
2513.506	FILTER BLANKET, TYPE I	CUBIC YARDS	10
2531.501	CONCRETE CURB & GUTTER, DESIGN B 618	LINEAR FOOT	45
2576.501	SODDING	SQUARE YARDS	2500
2503.512-30	F & I. R. C. PIPE SEWER, CLASS II, JACKING	LINEAR FOOT	92

STANDARD DETAIL PLATES	
1100 D	EXPANSION JOINT — PLAIN
3000 B	REINFORCED CONCRETE PIPE
4000 D	MANHOLE OR CATCH BASIN — DESIGN A
4101 A	RING CASTING FOR MANHOLE OR CATCH BASIN
4111 C	COVER CASTING FOR MANHOLE
4126 B	CATCH BASIN FRAME CASTING
4140 C	SPECIAL CONVEX GRATE CASTING FOR CATCH BASIN
4149 B	GRATE CASTING FOR CATCH BASIN
4161 C	CURB BOX CASTING FOR CATCH BASIN
7100 C	CONCRETE CURB AND GUTTER — DESIGN B6-18
8003 TO 8008 A	WARNING SIGNS

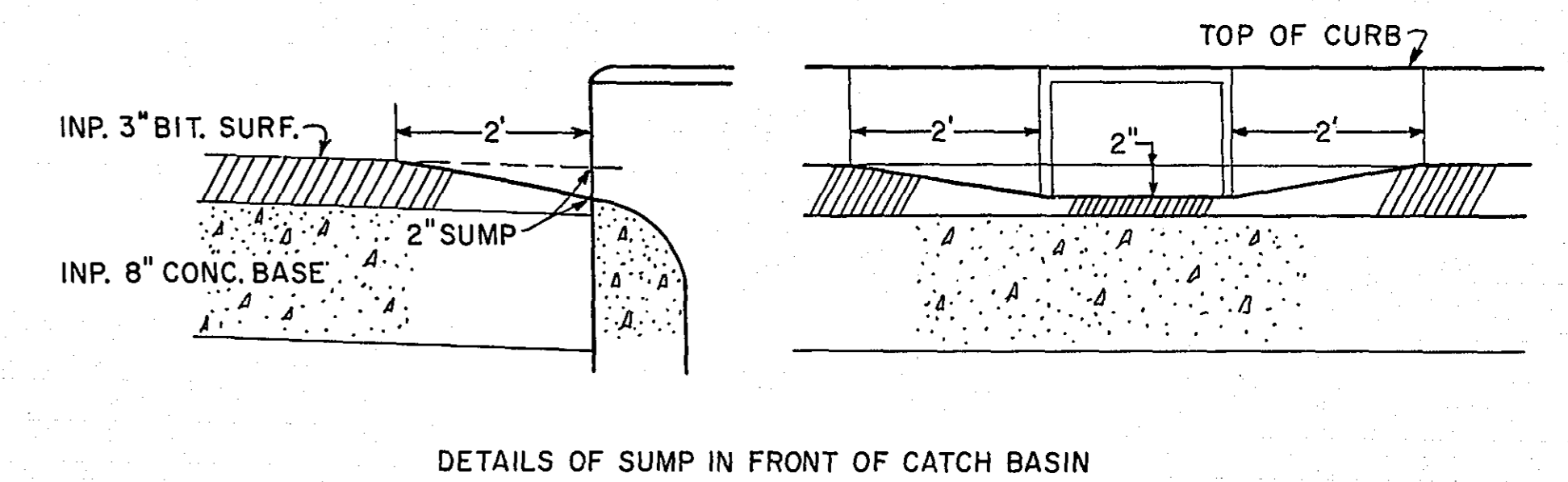
SPECIAL CATCH BASIN RC-2



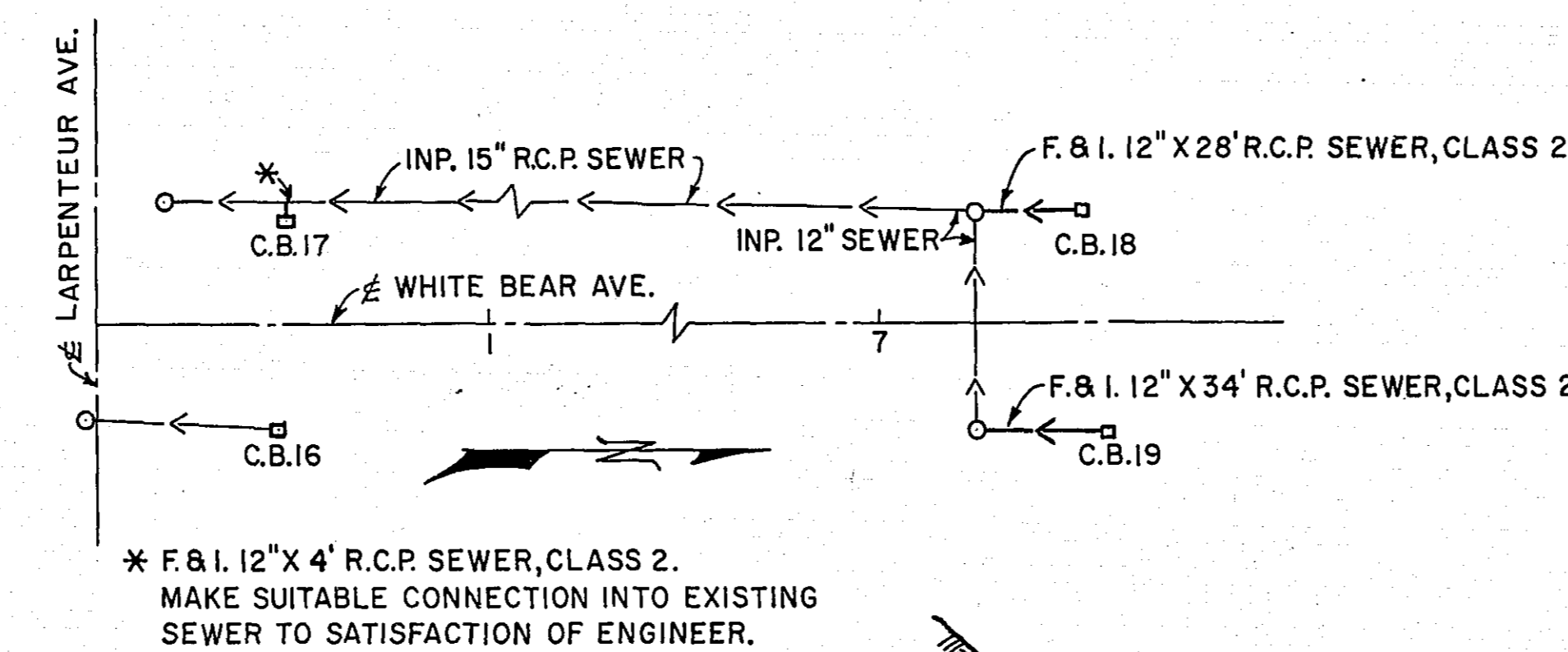
SECTION ALONG FACE OF CURB

SIDE VIEW

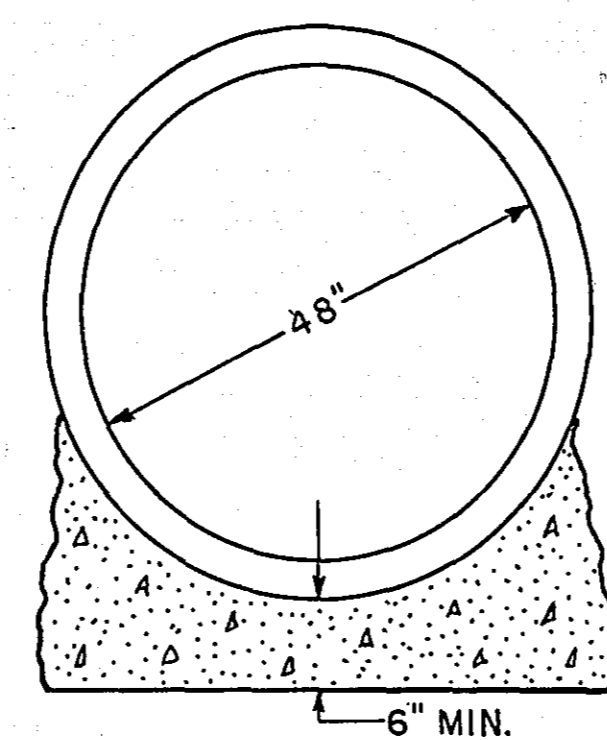
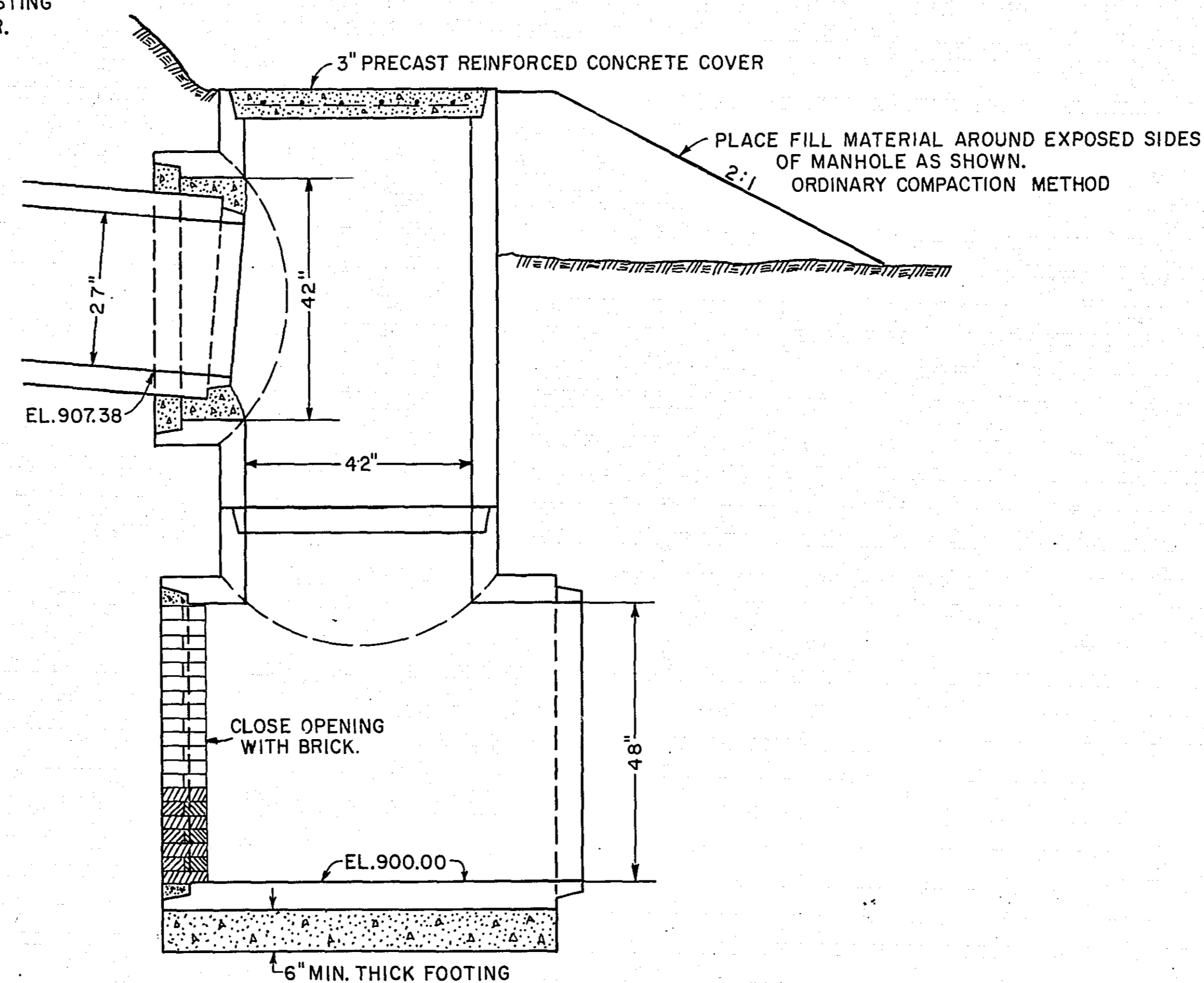
CATCH BASIN TYPE H



DETAILS OF SUMP IN FRONT OF CATCH BASIN

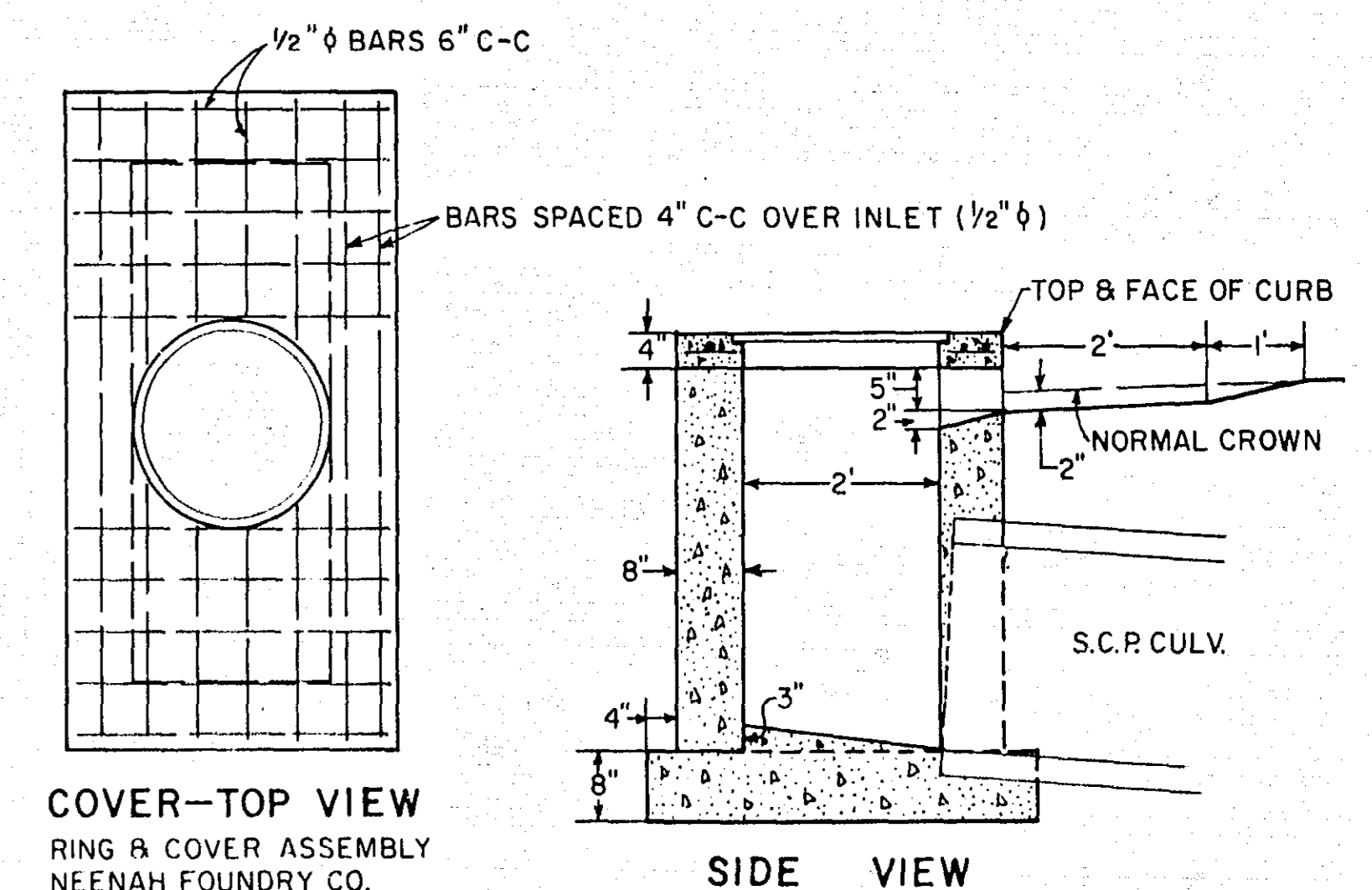


* F. & I. 12" X 4" R.C.P. SEWER, CLASS 2. MAKE SUITABLE CONNECTION INTO EXISTING SEWER TO SATISFACTION OF ENGINEER.



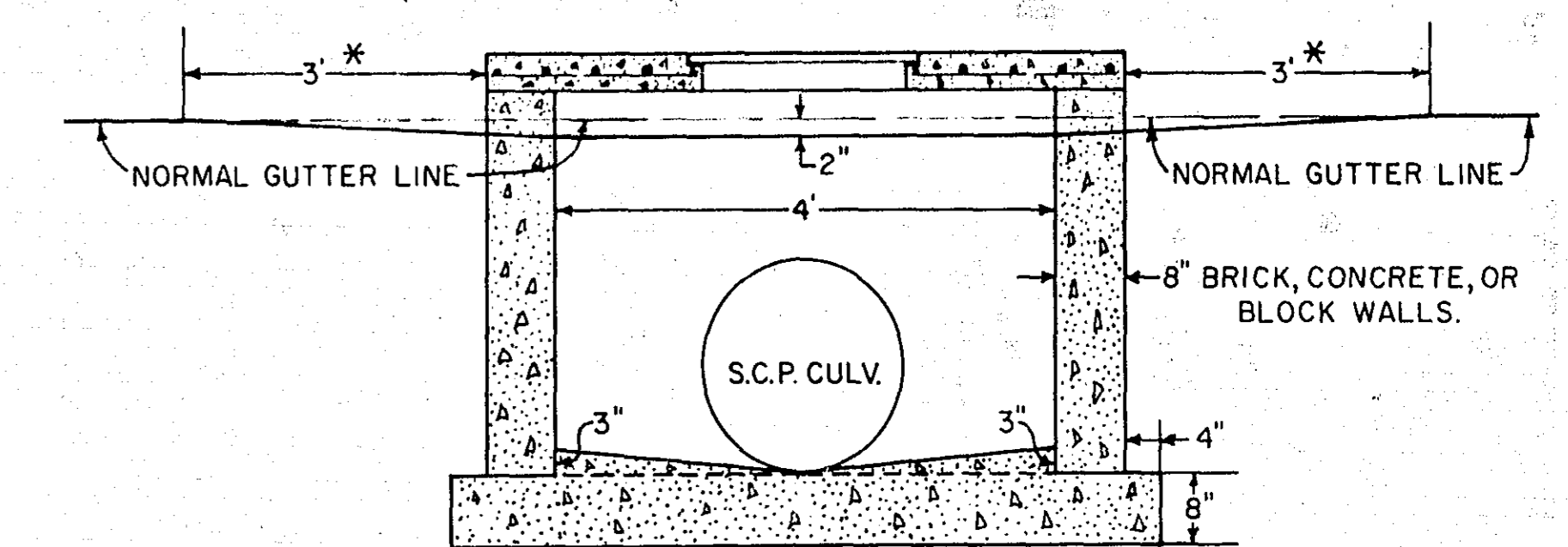
MANHOLE 15 STA. 33+92.32

SPECIAL CATCH BASIN RC-1



COVER-TOP VIEW
RING & COVER ASSEMBLY
NEENAH FOUNDRY CO.
ASS'Y. R-6034 OR EQUAL

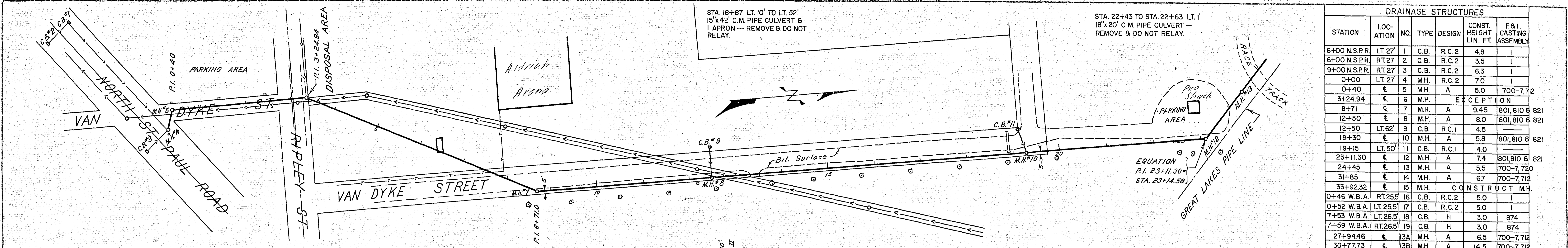
SIDE VIEW



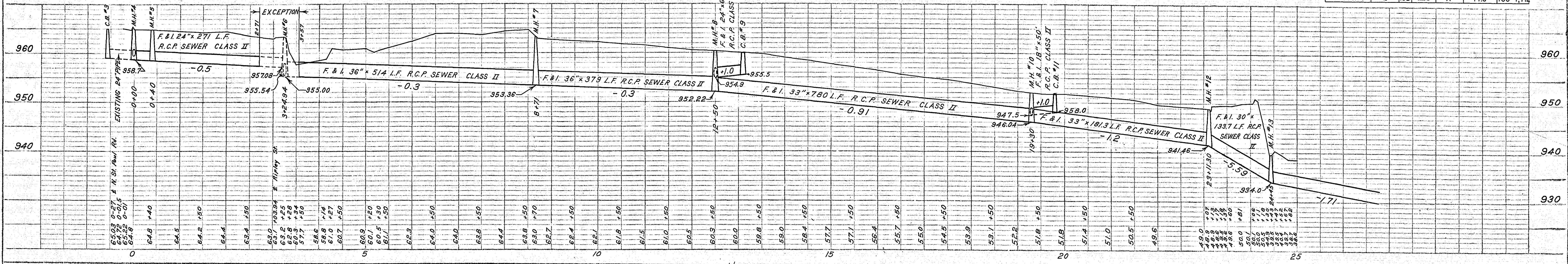
FRONT VIEW

* CONSTRUCT 3 LIN. FT. CONCRETE CURB ON EACH SIDE OF CATCH BASINS. CHANGE 3" GUTTER TAPER TO 1" ON DOWN-HILL SIDE.

DATE: _____
 BY: _____
 CHECKED: _____
 DATE: _____
 NO. _____



DRAINAGE STRUCTURES						
STATION	LOC-ACTION	NO.	TYPE	DESIGN	CONST. HEIGHT LIN. FT.	F.B.I. CASTING ASSEMBLY
6+00 N.S.P.R.	LT. 27'	1	C.B.	R.C.2	4.8	I
6+00 N.S.P.R.	RT. 27'	2	C.B.	R.C.2	3.5	I
9+00 N.S.P.R.	RT. 27'	3	C.B.	R.C.2	6.3	I
0+40	LT. 27'	4	M.H.	A	7.0	I
0+40	€	5	M.H.	A	5.0	700-7,72
3+24.94	€	6	M.H.	A	EXCEPTION	
8+71	€	7	M.H.	A	9.45	801,810 B 821
12+50	€	8	M.H.	A	8.0	801,810 B 821
12+50	LT. 62'	9	C.B.	R.C.1	4.5	
19+30	€	10	M.H.	A	5.8	801,810 B 821
19+15	LT. 50'	11	C.B.	R.C.1	4.0	
23+11.30	€	12	M.H.	A	7.4	801,810 B 821
24+45	€	13	M.H.	A	5.5	700-7,720
31+85	€	14	M.H.	A	6.7	700-7,712
33+92.32	€	15	M.H.	A	CONSTRUCT M.H.	
0+46 W.B.A.	RT. 255'	16	C.B.	R.C.2	5.0	I
0+52 W.B.A.	LT. 255'	17	C.B.	R.C.2	5.0	I
7+53 W.B.A.	LT. 265'	18	C.B.	H	3.0	874
7+59 W.B.A.	RT. 265'	19	C.B.	H	3.0	874
27+94.46	€	13A	M.H.	A	6.5	700-7,712
30+77.73	€	13B	M.H.	A	4.5	700-7,712



DATE: _____
 BY: _____
 CHECKED: _____
 DATE: _____
 NO. _____

