

**CONVENTIONAL SIGNS**

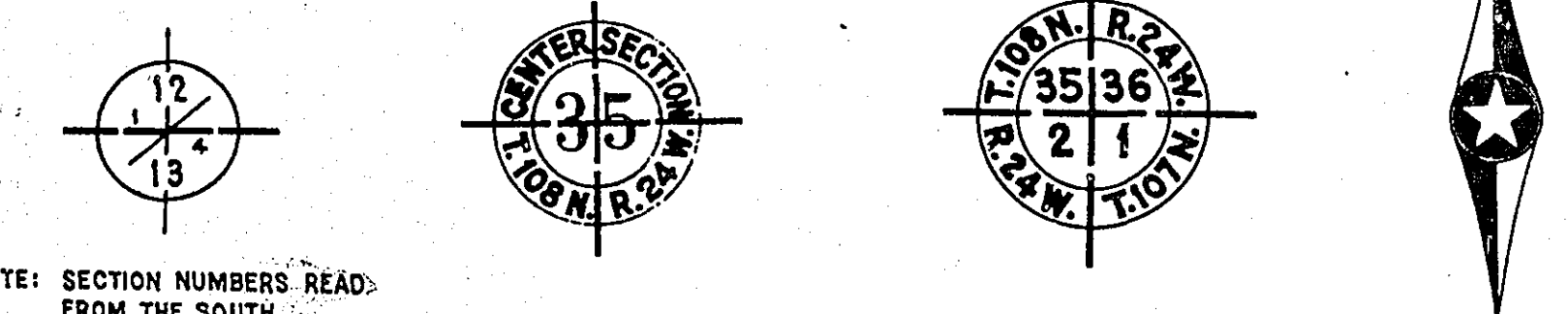
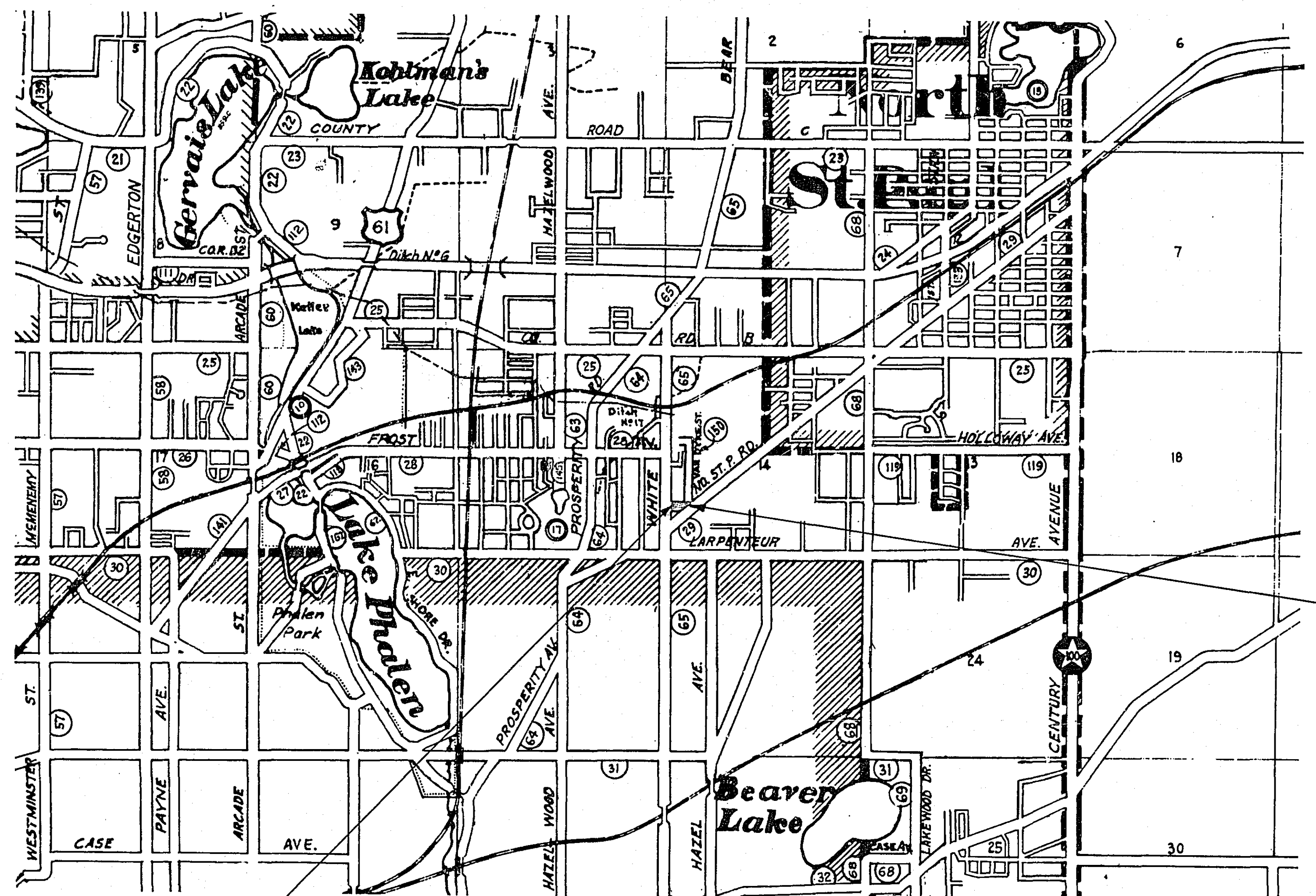
STATE LINE	-----	TIMBER	-----
COUNTY LINE	-----	BRUSH	-----
TOWNSHIP OR RANGE LINE	-----	ORCHARD	-----
SECTION LINE	-----	ROCK LEDGE	-----
QUARTER LINE	-----	SAND	-----
SIXTEENTH LINE	-----	EDGE OF CUT	-----
RIGHT-OF-WAY LINE	-----	TOE OF EMBANKMENT	-----
PRESENT ROAD R/W LINE	-----	CATCH BASIN	-----
LIMITED ACCESS	-----	MANHOLE	-----
PROPERTY LINE (Except Land Lines)	-----	DROP INLET	-----
VACATED PLATTED PROPERTY	-----	FIRE HYDRANT	-----
CORPORATE OR CITY LIMITS	-----	ARC LAMP	-----
TRUNK HIGHWAY CENTER LINE	-----	OTHER LAMPS (table kind)	-----
RETAINING WALL	-----	RAILROAD CROSSING SIGN	-----
STEAM RAILROAD	-----	RAILROAD CROSSING BELL	-----
ELECTRIC RAILROAD	-----	ELECTRIC WARNING SIGN	-----
RAILROAD RIGHT-OF-WAY LINE	-----	CROSSING GATE	-----
CREEK	-----	CATTLE GUARD	-----
RAPIDS OR WATERFALL	-----	OVERHEAD (Highway Over)	-----
DRY RUN	-----	UNDERPASS (Highway Under)	-----
DRAINAGE DITCH	-----	ABUTMENT, WALL & PIER	-----
HIGH TENSION LINE	-----	BRIDGE	-----
POWER POLE LINE	-----	CULVERT	-----
TELEPHONE OR TELEGRAPH LINE	-----	BUILDING (One Story Frame)	-----
TELEPHONE CONDUIT	-----	C-CONCRETE S-STONE T-TILE B-BRICK ST-STUCCO	-----
GUARD RAIL	-----	IRON PIPE	-----
WIRE FENCE	-----	STONE MONUMENT	-----
RAILROAD SNOW FENCE	-----	WOOD STAKE OR HUB	-----
BOARD OR HIGHWAY SNOW FENCE	-----	MEANDER CORNER	-----
STONE WALL OR FENCE	-----		
GAS MAIN	-----		
WATER PIPE	-----		
SEWER PIPE	-----		
DRAIN TILE	-----		
GRAVEL PIT	-----		
SAND PIT	-----		
CLAY PIT	-----		
ROCK QUARRY	-----		
SPRINGS	-----		
MARSH	-----		

**OFFICE OF COUNTY ENGINEER  
RAMSEY COUNTY**  
CONSTRUCTION PLAN FOR GRADING AND PAVING  
**RIPLEY STREET**  
FROM WHITE BEAR AVENUE TO NORTH ST. PAUL ROAD  
RAMSEY COUNTY PROJECT 62-121

GROSS LENGTH	913.66 FEET	0.173 MILES
BRIDGES-LENGTH	0 FEET	0 MILES
EXCEPTIONS-LENGTH	0 FEET	0 MILES
NET LENGTH	913.66 FEET	0.173 MILES

INDEX	
SHEET NO.	DESCRIPTION
1	TITLE SHEET
2	TYPICAL SECTION, ESTIMATED QUANTITIES & PANEL LAYOUT.
3	PLAN & PROFILE
4	CROSS-SECTIONS
5	BORROW PIT CROSS-SECTIONS

SCALES	PLAN, 1 inch = 50 Feet
	PROFILE, Horiz. 1 inch = 50 Feet. Vert. 1 inch = 5 Feet.
	WORKING PLANS { Horiz. 1 inch = 100 Feet Vert. 1 inch = 10 Feet
	LAYOUT, 1 inch = 2640 Feet



NOTE: SECTION NUMBERS READ FROM THE SOUTH

**PIT DATA**

PIT NO.	Located in	Dead Haul
PIT NO.	Located in	Dead Haul
PIT NO.	Located in	Dead Haul
PIT NO.	Located in	Dead Haul

I HEREBY CERTIFY THAT THIS PLAN WAS PREPARED BY ME OR UNDER MY DIRECT SUPERVISION AND THAT I AM A DULY REGISTERED PROFESSIONAL ENGINEER UNDER THE LAWS OF THE STATE OF MINNESOTA.  
*Walter Cook* REG. NO. 2042 DATE

RECOMMENDED FOR APPROVAL *Don F. Collier* COUNTY ENGINEER DATE 6/25/62  
APPROVED *H. J. Goodrich* VICE-CHAIRMAN OF RAMSEY COUNTY BOARD DATE JUNE 25, 1962

MINNESOTA STATE HIGHWAY DEPARTMENT

RECOMMENDED FOR APPROVAL \_\_\_\_\_ DATE \_\_\_\_\_  
DISTRICT ENGINEER

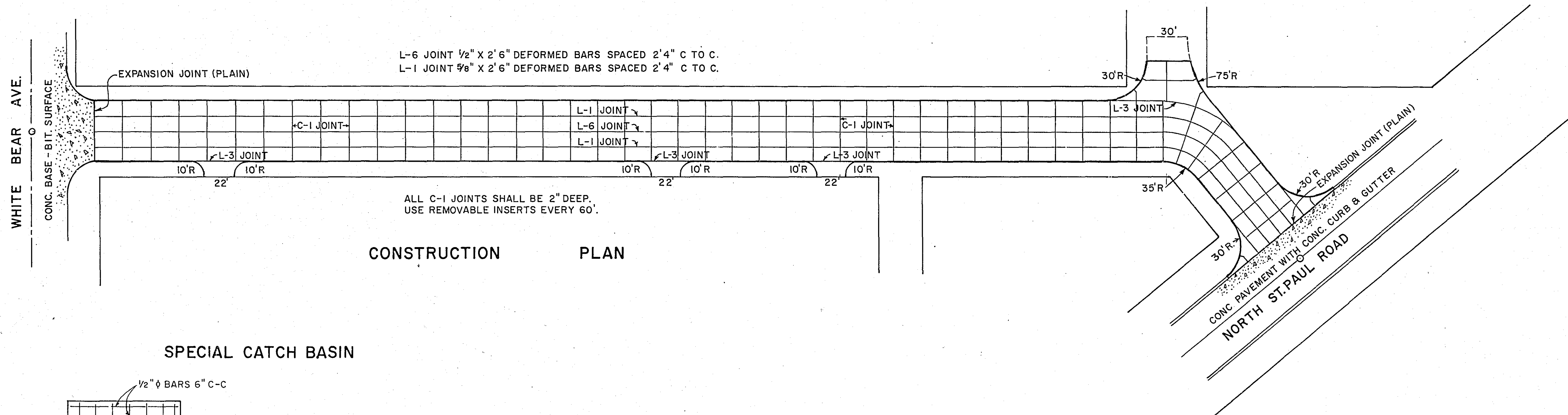
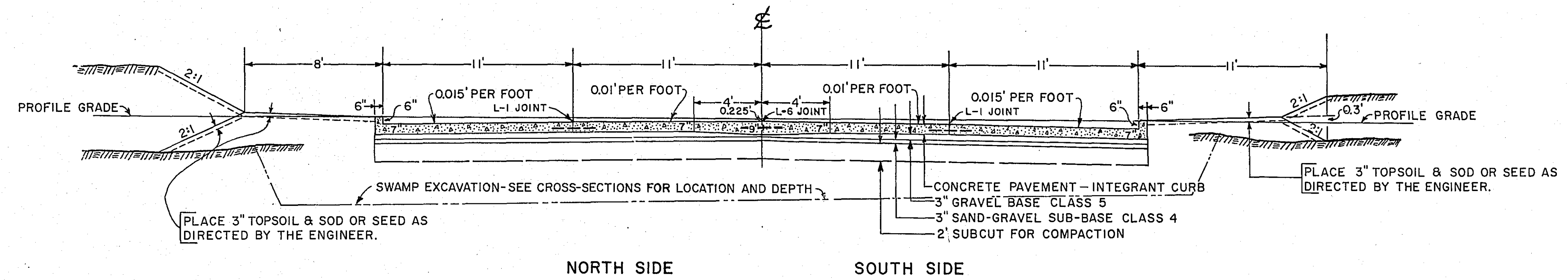
— SPECIFICATIONS —  
THE "SPECIFICATIONS FOR HIGHWAY CONSTRUCTION" DATED MAY 1, 1959 SHALL GOVERN.

ESTIMATED QUANTITIES			
SPEC. NO.	DESCRIPTION	UNIT	TOTAL ESTIMATED QUANTITIES
2104.503	REMOVE CURB AND GUTTER	LINEAR FOOT	84
2104.510	REMOVE FENCE	LINEAR FOOT	133
2105.501	CLASS A EXCAVATION	CUBIC YARD	5,810
2105.506	BORROW EXCAVATION (CLASS A)	CUBIC YARD	2,002
2106.501	SPECIAL SWAMP EXCAVATION	CUBIC YARD	2,465
2201.526	GRAVEL SUB-BASE IN PLACE (CLASS 4)	TON	684
2202.526	GRAVEL BASE IN PLACE (CLASS 5)	TON	737
2301.511	CONCRETE PAVEMENT (STANDARD STRENGTH)	SQUARE YARD	4,600
2301.511	CONCRETE PAVEMENT (7" THICK ENTRANCES) (STANDARD STR.)	SQUARE YARD	95
2301.531	REINFORCEMENT BARS	POUND	2,700
2301.541	INTEGRANT CURB, DESIGN B-6	LINEAR FOOT	1,914
2301.549	CONCRETE TREATING OIL	GALLON	276
2503.512-18	F. & I. R.C.P. SEWER, CLASS 2, 18"	LINEAR FOOT	434
2503.512-21	F. & I. R.C.P. SEWER, CLASS 2, 21"	LINEAR FOOT	44
2503.512-24	F. & I. R.C.P. SEWER, CLASS 2, 24"	LINEAR FOOT	54
2503.512-30	F. & I. R.C.P. SEWER, CLASS 2, 30"	LINEAR FOOT	137
2503.512-36	F. & I. R.C.P. SEWER, CLASS 2, 36"	LINEAR FOOT	32
2506.507	CONSTRUCT CATCH BASINS, SPECIAL	LINEAR FOOT	3.6
2506.507	CONSTRUCT CATCH BASINS, TYPE A OR C	LINEAR FOOT	12.8
2506.516	F. & I. CASTING ASSEMBLIES	ASSEMBLY	3
2574.501	ROADSIDE SEEDING	ACRE	1.0
2574.511	SEED (CLASS 15)	POUND	120
2576.501	SODDING	SQUARE YARD	585

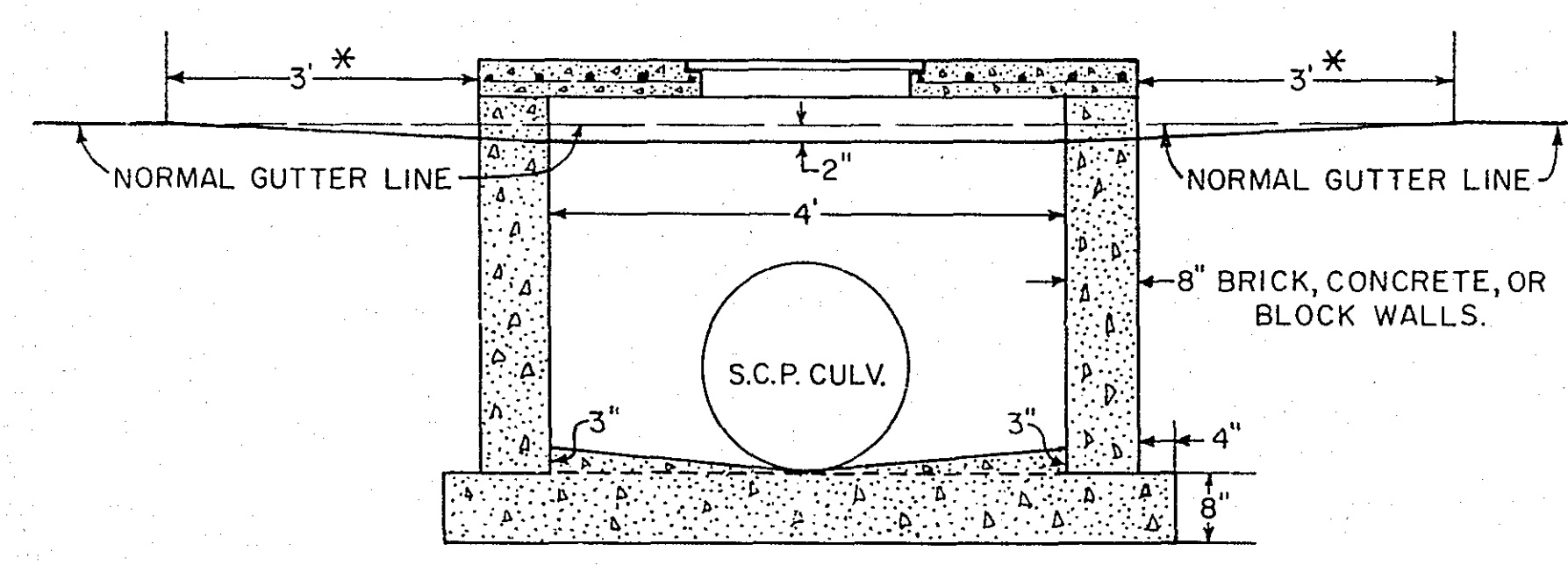
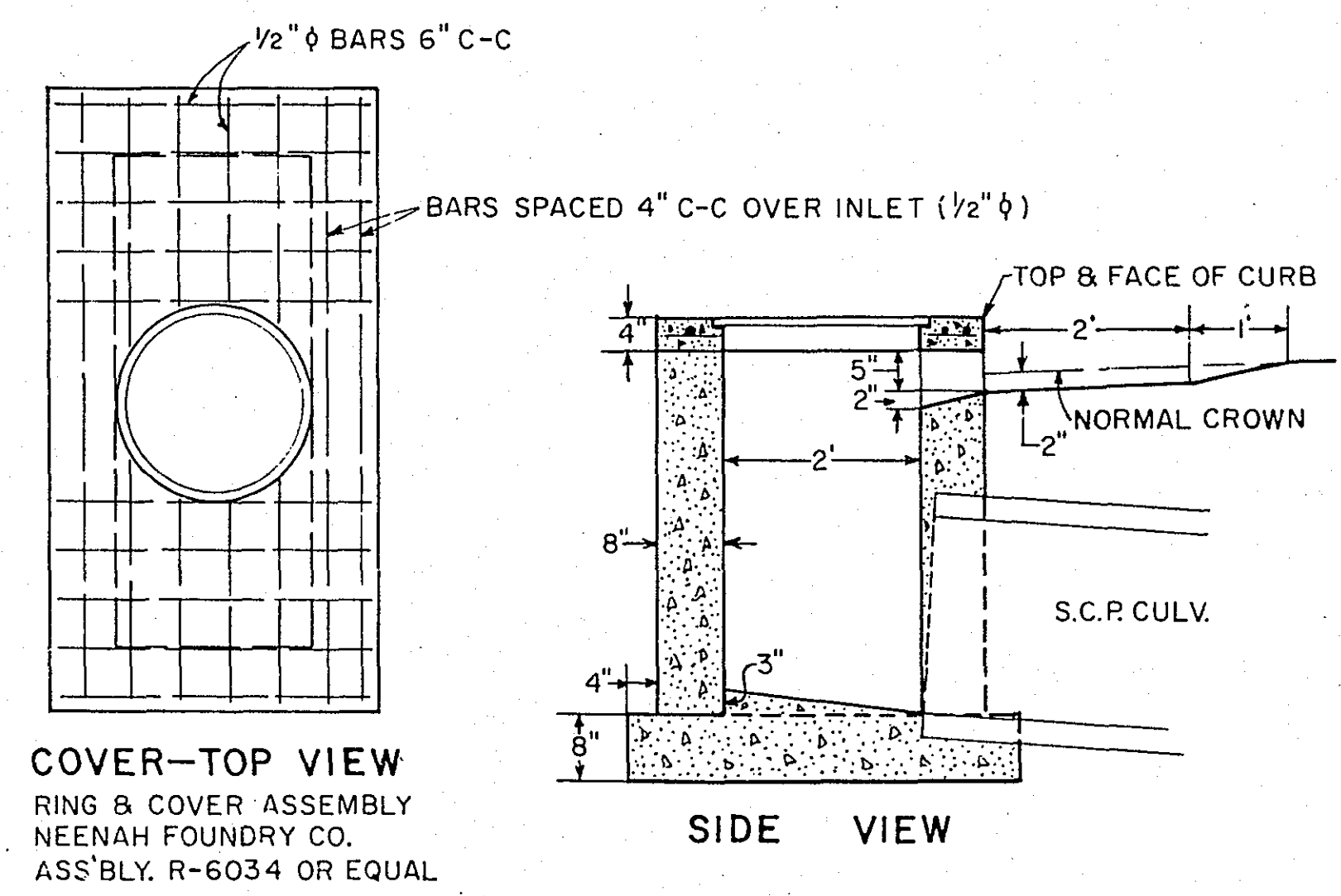
GRATE FRAME NO. 801  
GRATE NO. 810  
CURB BOX NO. 821 B

STANDARD DETAIL PLATES	
1120 E	CONTRACTION JOINTS
1140 F	LONGITUDINAL JOINTS
1141 A	PAVEMENT KEYWAY FOR KEYED JOINT CONSTRUCTION
3000 B	REINFORCED CONCRETE PIPE
4000 E & 4002 C	MANHOLE OR CATCH BASIN
4126 B	CATCH BASIN FRAME CASTING
4149 B	GRATE CASTING FOR CATCH BASIN
4161 C	CURB BOX CASTING FOR CATCH BASIN
4180 D & 4181	MANHOLE STEP CASTING
7001 A	INTEGRANT CURB, DESIGN B-6
7035 D	CURB RETURN AT ENTRANCES (MODIFY PAVEMENT DEPTH TO 7")
7111 B	INSTALLATION OF CATCH BASIN CASTINGS
8000 A & 8009	STANDARD BARRICADE
8003 TO 8008 A	ADVANCE WARNING SIGN

## TYPICAL SECTION



### SPECIAL CATCH BASIN



\* CONSTRUCT 3 LIN. FT. CONCRETE CURB ON EACH SIDE OF CATCH BASINS.  
CHANGE 3" GUTTER TAPER TO 1" ON DOWN-HILL SIDE.



Sta. 0+25 Lt. 53' to 0+67 Lt. 35'  
 Inplace 18"x45" S.C.P. SEWER  
 O.K. LEAVE

Sta. 0+68 Lt. 35' to Sta. 2+50 Lt. 21'  
 F. & I. 18" x 182 L.F. R.C.P. SEWER CLASS II

Sta. 2+50 Lt.  
 CONSTRUCT C.B. 2.6 L.F. DESIGN A or C

Sta. 2+50 Lt. 21' to Sta. 5+02 Lt. 21'  
 F. & I. 18" x 252 L.F. R.C.P. SEWER CLASS II

Sta. 5+02 Lt. 21'  
 CONSTRUCT C.B. 3.9 L.F.  
 DESIGN A or C

Sta. 5+02 Lt. 21' to 5+02 Rt. 23'  
 F. & I. 21" x 44 L.F. R.C.P. SEWER CLASS II

Sta. 5+02 Rt. 23'  
 CONSTRUCT SPECIAL C.B. 3.6 L.F.

Sta. 3+45 Lt. 34' to 3+45 Rt. 11'  
 Inplace 24"x45" VIT. PIPE  
 3+45 Rt. 11' Inplace M.H.  
 NOT REQUIRED

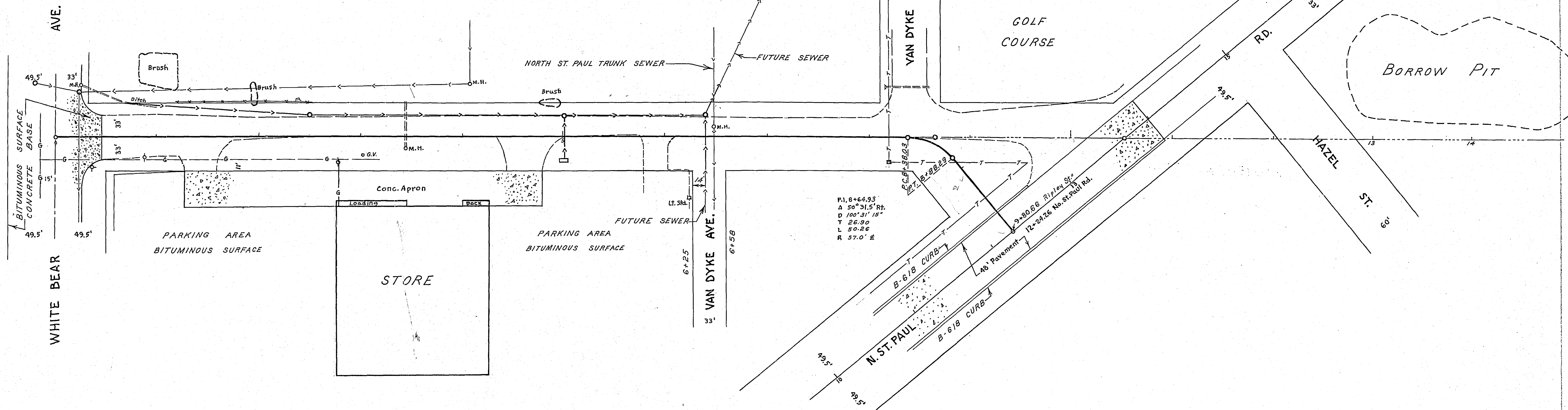
Sta. 5+02 Lt. 21' to 6+39 Lt. 21'  
 F. & I. 30" x 137 L.F. R.C.P. SEWER CLASS II

Sta. 6+39 Lt. 21'  
 CONSTRUCT C.B. 6.3 L.F. DESIGN A or C

Sta. 6+39 Lt. 21' to 6+39 Rt. 23'  
 F. & I. 24" x 54 L.F. R.C.P. SEWER CLASS II  
 CAP END OF SEWER WITH PLANK

Sta. 6+39 Lt. 21' to 6+53 Lt. 50'  
 F. & I. 36" x 32 L.F. R.C.P. SEWER, CLASS II  
 CAP END OF SEWER WITH PLANK

Sta. 8+39 Lt. 49'  
 Inp. 15" x 45" C.M.  
 NO CURVERT REQUIRED



B.M. ELEV. 969.05  
 S.E. COR. LOWER STEP  
 HOUSE NO. 1805 W. B. AVE.

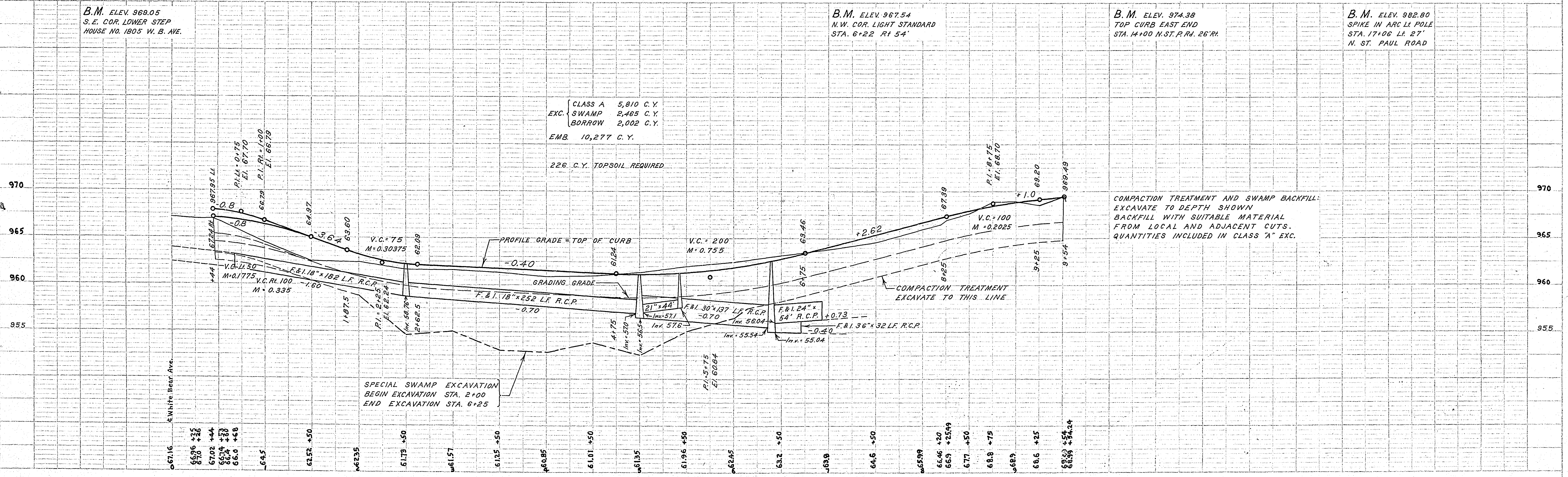
B.M. ELEV. 967.54  
 N.W. COR. LIGHT STANDARD  
 STA. 6+22 Rt. 54'

B.M. ELEV. 974.38  
 TOP CURB EAST END  
 STA. 14+00 N. ST. PAUL RD. 26" R.I.

B.M. ELEV. 982.80  
 SPIKE IN ARC LI. POLE  
 STA. 17+06 Lt. 27'  
 N. ST. PAUL ROAD

CLASS A 5,810 C.Y.  
 SWAMP 2,465 C.Y.  
 BORROW 2,002 C.Y.  
 EMB. 10,277 C.Y.

226 C.Y. TOPSOIL REQUIRED



COMPACTION TREATMENT AND SWAMP BACKFILL:  
 EXCAVATE TO DEPTH SHOWN  
 BACKFILL WITH SUITABLE MATERIAL  
 FROM LOCAL AND ADJACENT CUTS.  
 QUANTITIES INCLUDED IN CLASS 'A' EXC.

SPECIAL SWAMP EXCAVATION  
 BEGIN EXCAVATION STA. 2+00  
 END EXCAVATION STA. 6+25



STATION-ELEVATION

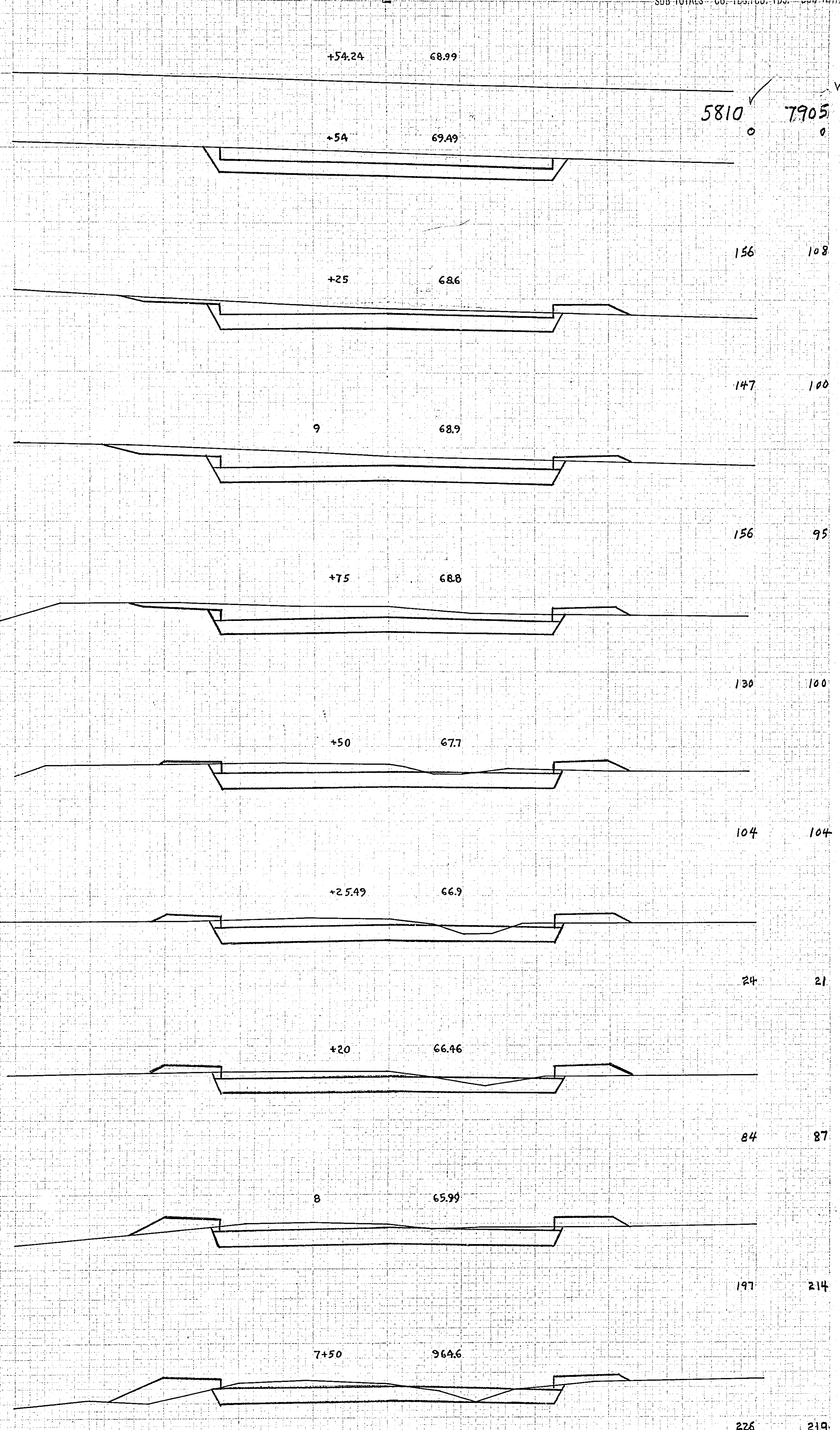
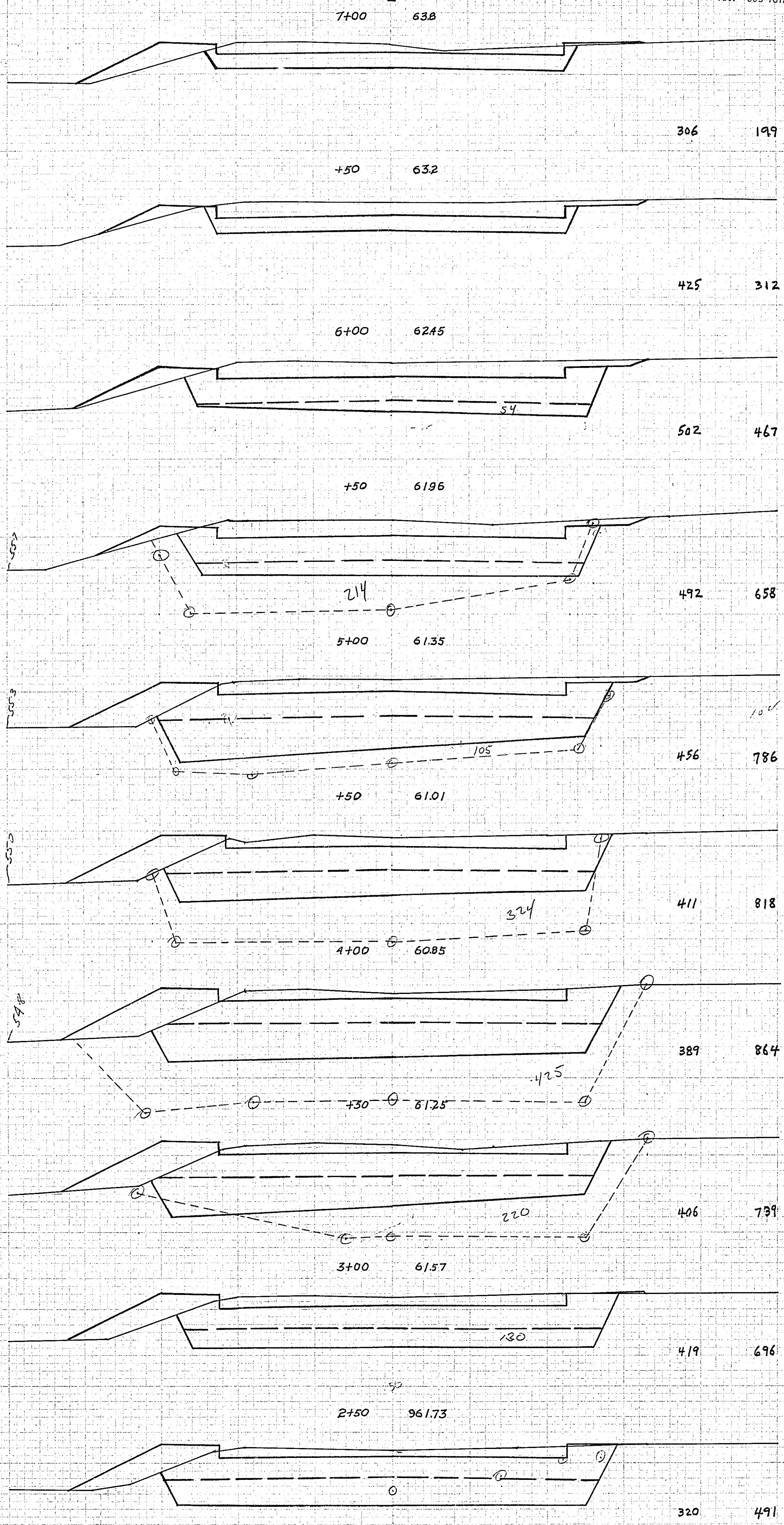
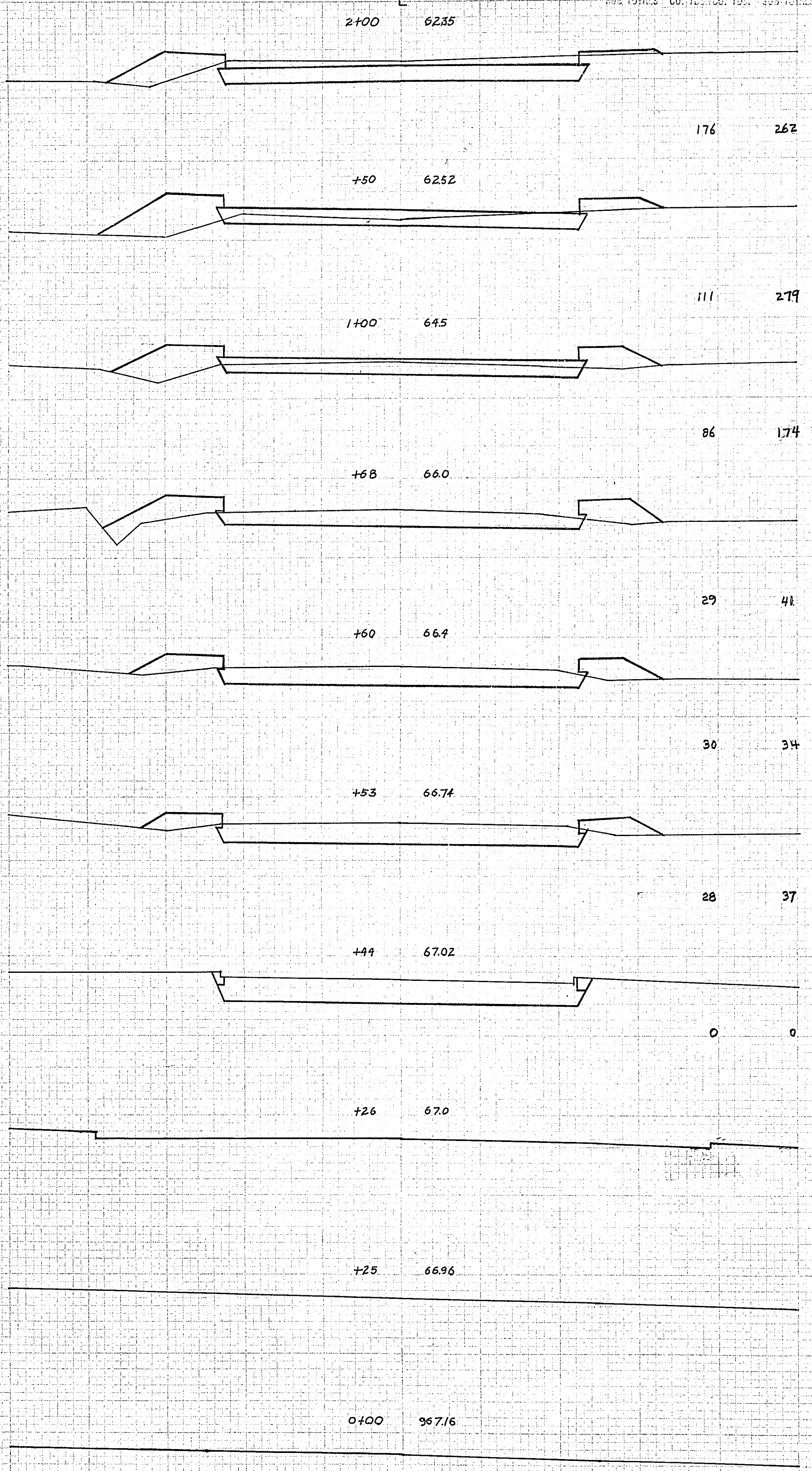
EXCAVATION | EMBANKMENT  
SUB-TOTALS - CU. YDS. | CU. YDS. - SUB-TOTALS

STATION-ELEVATION

EXCAVATION | EMBANKMENT  
SUB-TOTALS - CU. YDS. | CU. YDS. - SUB-TOTALS

STATION-ELEVATION

EXCAVATION | EMBANKMENT  
SUB-TOTALS - CU. YDS. | CU. YDS. - SUB-TOTALS



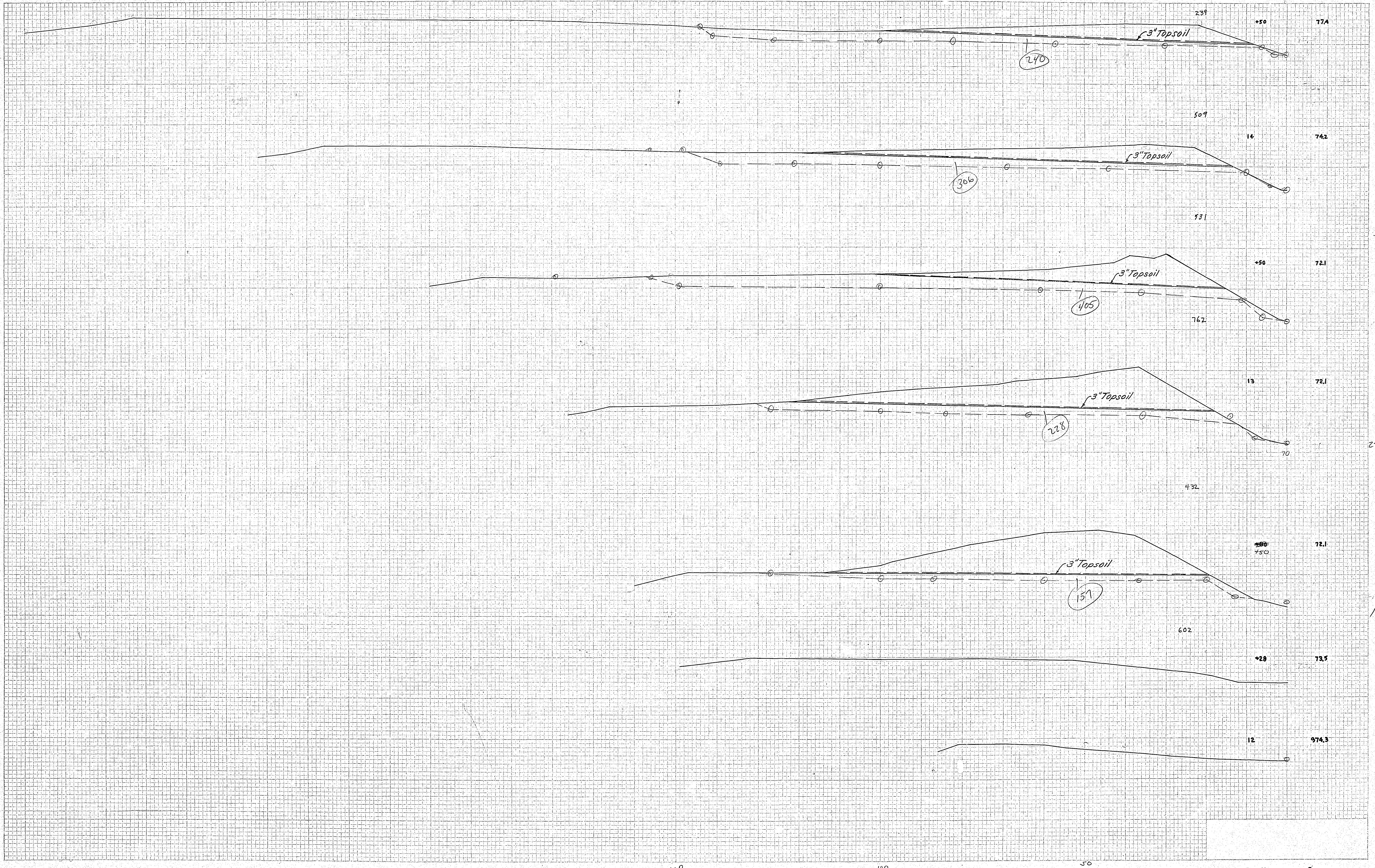
DATE: \_\_\_\_\_  
 DRAWN BY: \_\_\_\_\_  
 CHECKED BY: \_\_\_\_\_  
 PROJECT: \_\_\_\_\_

DATE: \_\_\_\_\_  
 DRAWN BY: \_\_\_\_\_  
 CHECKED BY: \_\_\_\_\_  
 PROJECT: \_\_\_\_\_

CROSS SECTIONS SCALE 1" = 10'



3075



NO.	DATE	BY

NO.	DATE	BY

150

100

50



NO. 100  
JOB BOOK  
PAGE 1  
DATE 10/15/11  
BY [Signature]

DATE 10/15/11  
PAGE 1  
BY [Signature]

