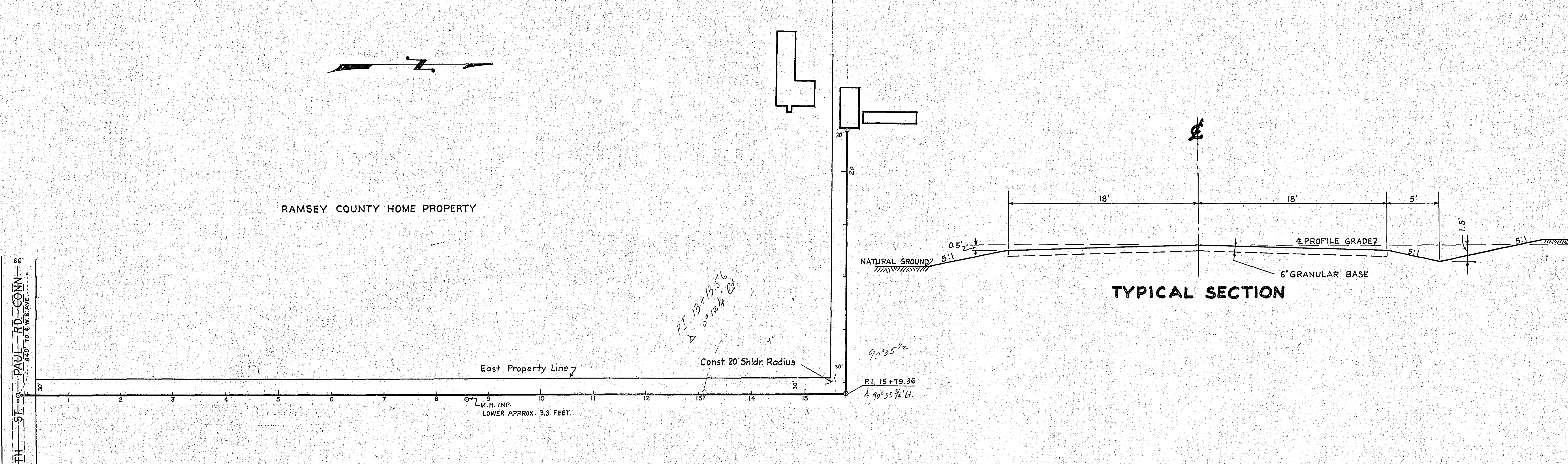


0+30 ±
Pl. 2x? Culv.

Sta 8+57 Bt 6.2'
Imp. M.H.
Lower.

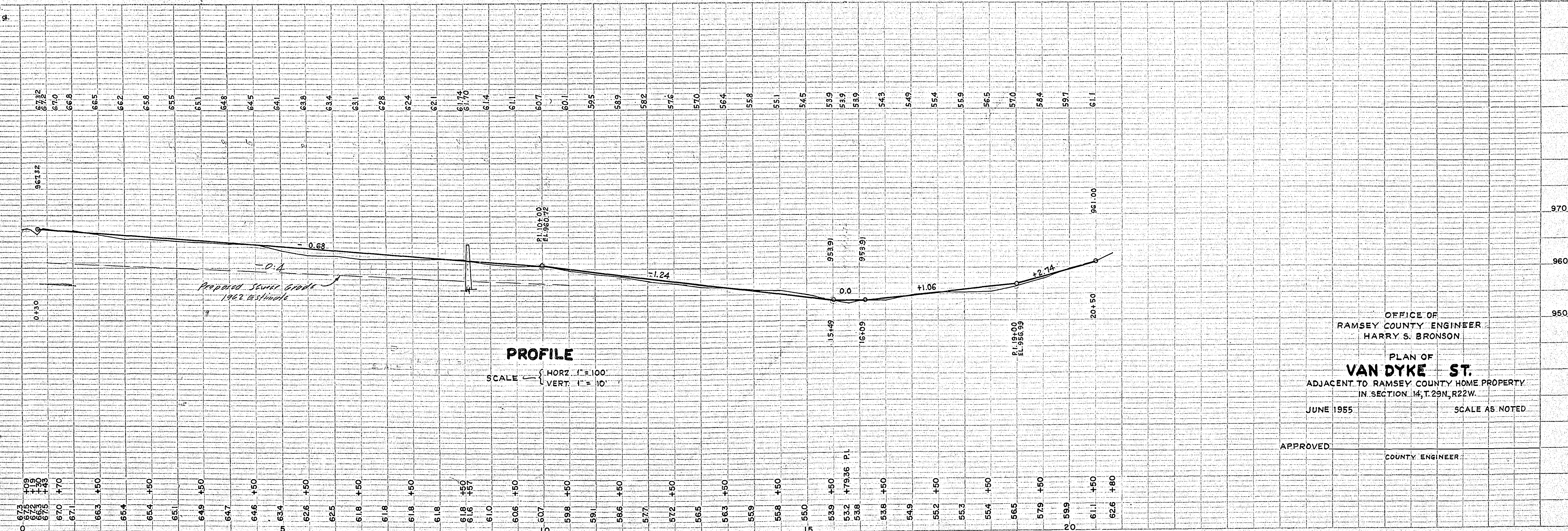
Sta 15 to 164 Pl. Culv. where required.



PLAN
SCALE 1"=100'

B.M. Top East Rim of M.H.
On (N.S.Pd. Cont.) Ripley St.
Elev. 963.54

B.M. Spk. in P.P.
At N. End of Barns.
Elev. 963.01



PROFILE

SCALE — HORZ. 1"=100'
VERT. 1"=10'

OFFICE OF
RAMSEY COUNTY ENGINEER
HARRY S. BRONSON

PLAN OF
VAN DYKE ST.

ADJACENT TO RAMSEY COUNTY HOME PROPERTY
IN SECTION 14, T.29N, R.22W.

JUNE 1955

SCALE AS NOTED

APPROVED

COUNTY ENGINEER

0+30 ±
P.I. 7x? Culv.

Sta 8+57 Rt 6.2'
Imp. M.H.
Lower

Sta 15+16 & P.I. Culv. where required

66
NORTH
57
PAUL RD. CONN.
840' TO W.B. AVE.

RAMSEY COUNTY HOME PROPERTY

East Property Line

Const. 20' Shldr. Radius

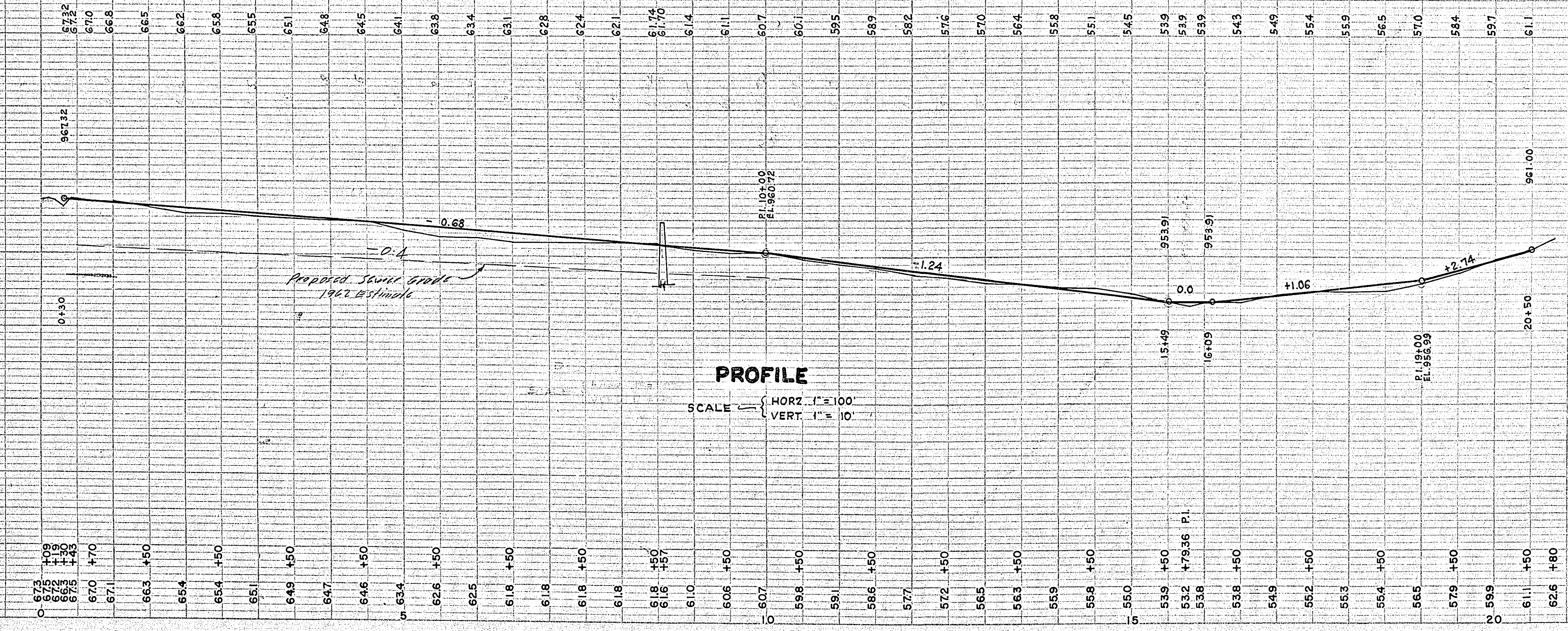
PLAN
SCALE 1" = 100'

NATURAL GROUND

TYPICAL SECTION

B.M. Top East Rim of M.H.
On (N.S.P.Rd. Conn.) Ripley St.
Elev. 963.54

B.M. Spk. in P.I.P.
At N. End of Barns
Elev. 963.01



PROFILE
SCALE HORZ. 1" = 100'
VERT. 1" = 10'

OFFICE OF
RAMSEY COUNTY ENGINEER
HARRY S. BRONSON

PLAN OF
VAN DYKE ST.
ADJACENT TO RAMSEY COUNTY HOME PROPERTY
IN SECTION 14, T.29N, R.22W.
JUNE 1955
SCALE AS NOTED

APPROVED
COUNTY ENGINEER