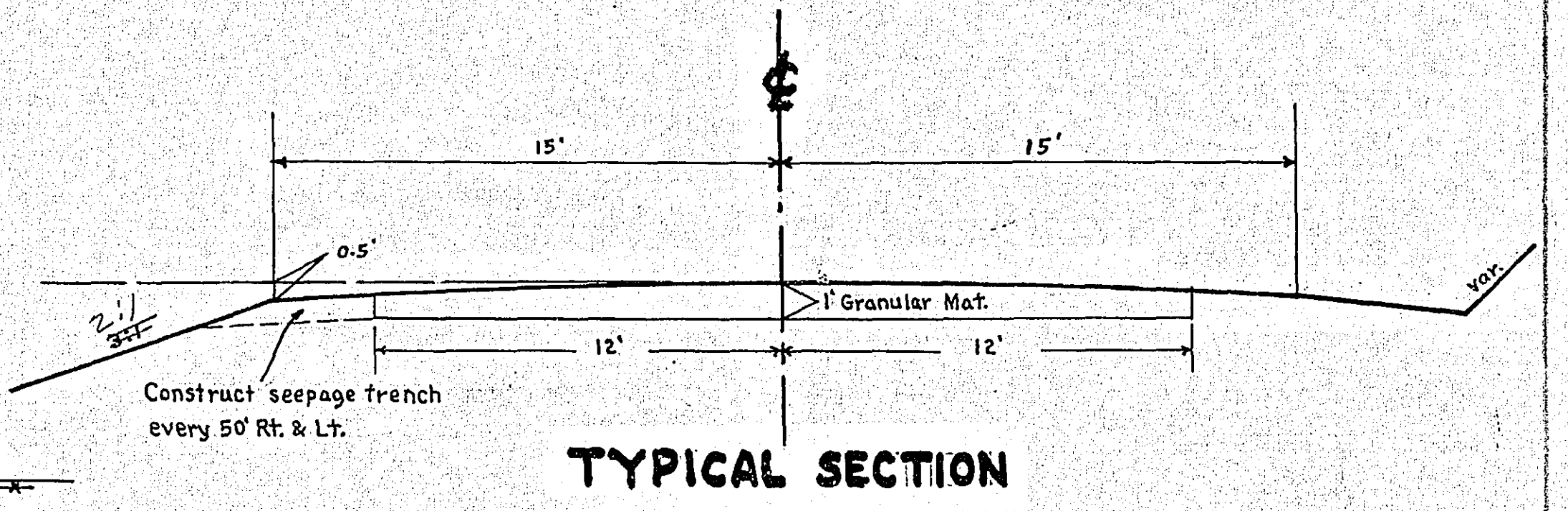
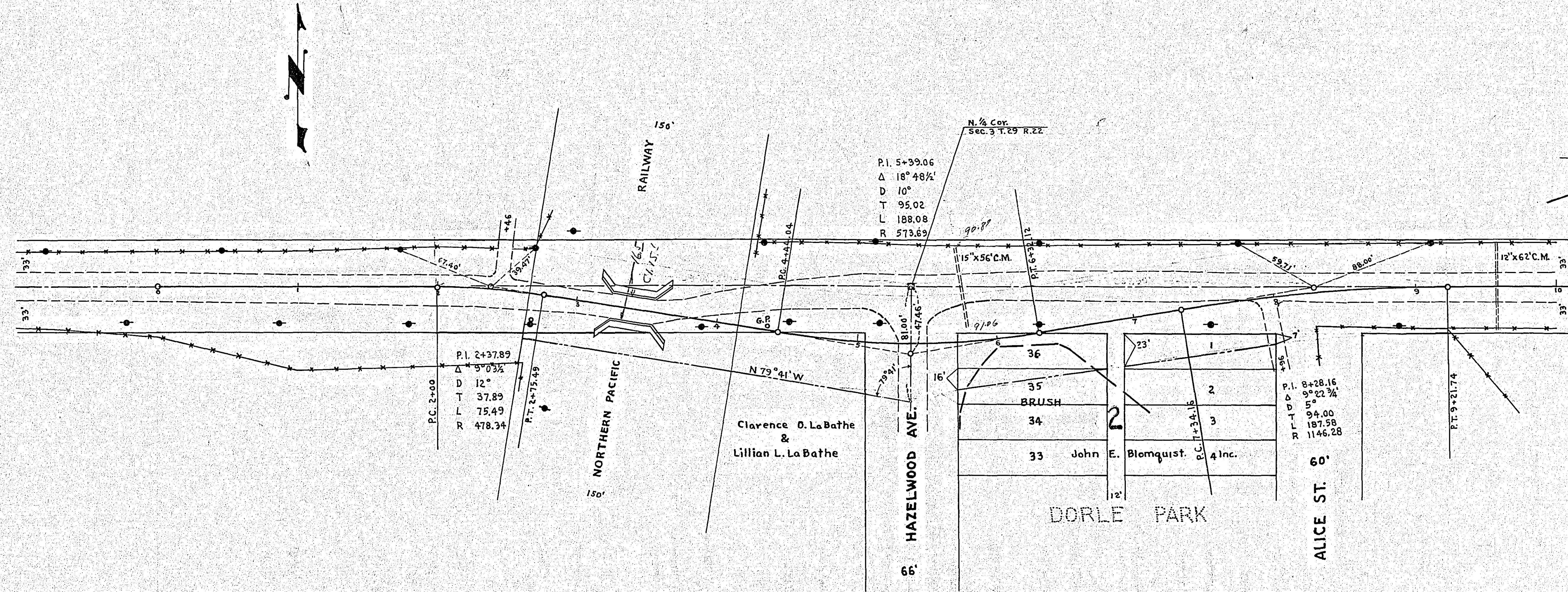


Sta. 5+78 Lt.
 Inp. 15" x 66' C.M. X-Drain
 Remove
 Install 18" x 60' C.M.

Sta. 0+50 @ Hazelwood Ave.
 Install 15" x 60' C.M.
 Obtain from Sta. 5+78 Lt. Co. Rd. "D"



PLAN SURVEYED
 NOTE BOOK GRADES CHECKED
 NO. 10

PROFILE SURVEYED
 NOTE BOOK GRADES CHECKED
 B. M. S. NOTED
 NO. 10

