

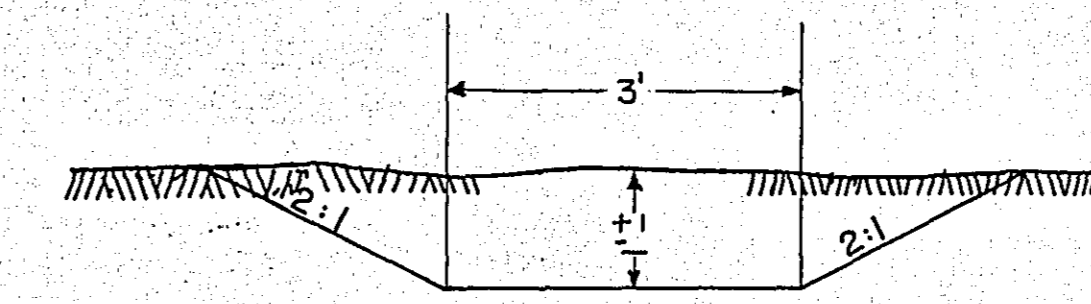
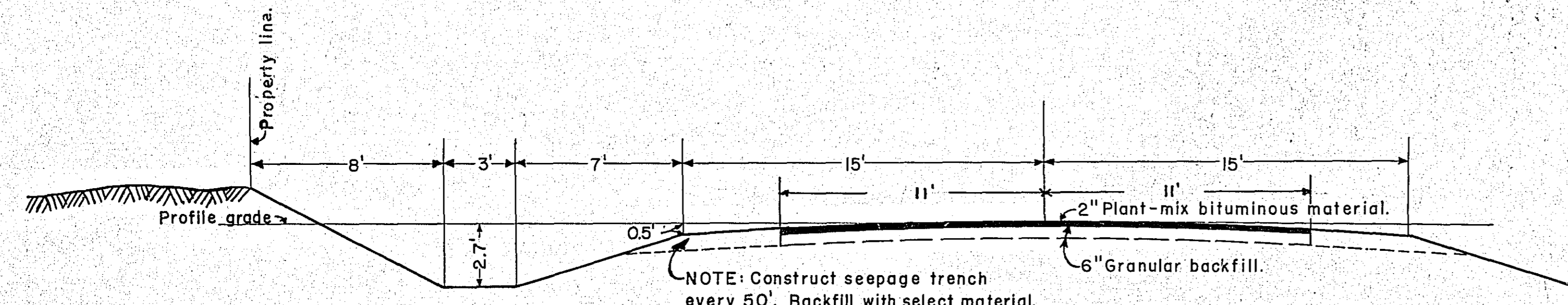
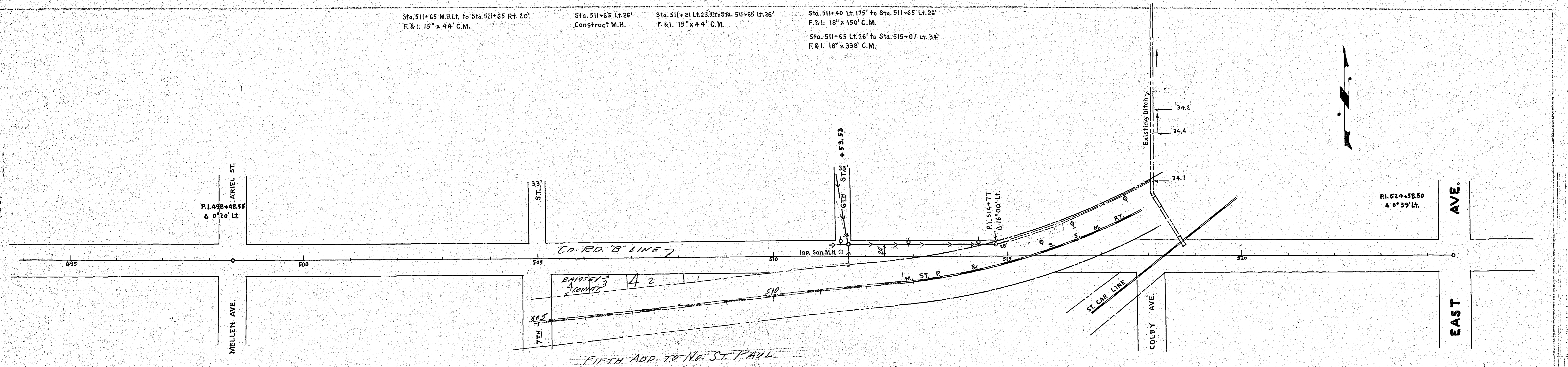
Sta. 511+65 M.H.Lt. to Sta. 511+65 Rt. 20'
F. & I. 15" x 44" C.M.

Sta. 511+65 Lt. 26'
Construct M.H.

Sta. 511+21 Lt. 23' to Sta. 511+65 Lt. 26'
F. & I. 15" x 44" C.M.

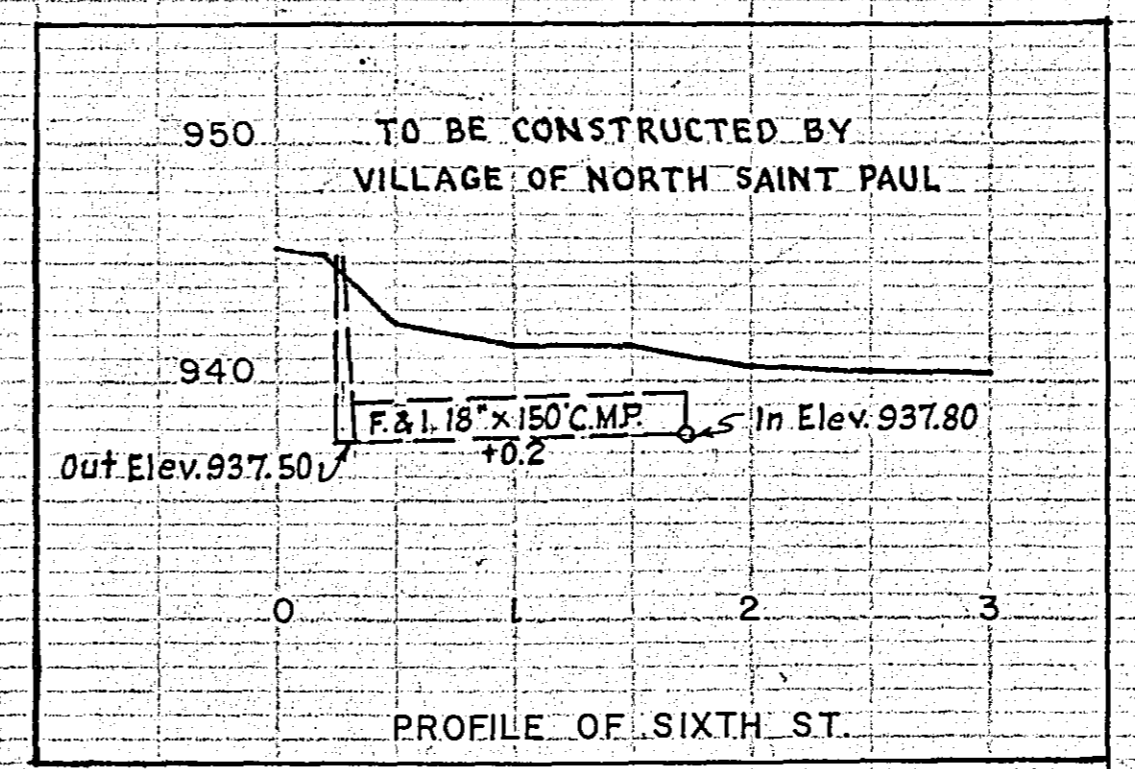
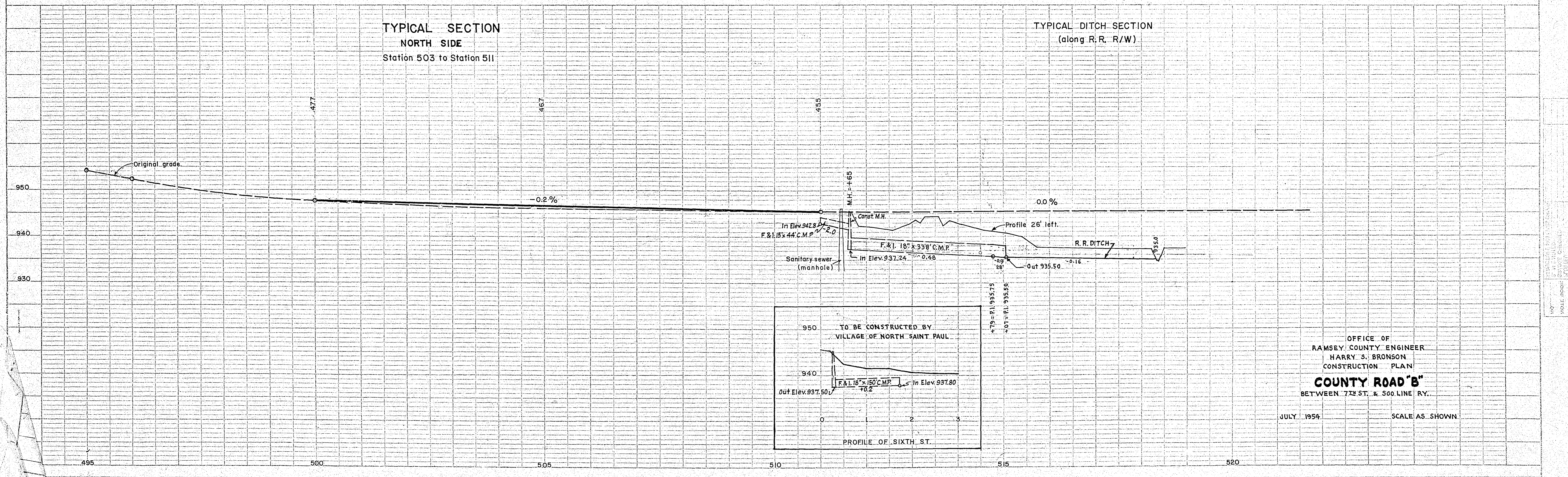
Sta. 511+40 Lt. 175' to Sta. 511+65 Lt. 26'
F. & I. 18" x 150" C.M.

Sta. 511+65 Lt. 26' to Sta. 515+07 Lt. 34'
F. & I. 18" x 338" C.M.



TYPICAL SECTION
NORTH SIDE
Station 503 to Station 511

TYPICAL DITCH SECTION
(along R. R. R/W)



OFFICE OF
RAMSEY COUNTY ENGINEER
HARRY S. BRONSON
CONSTRUCTION PLAN
COUNTY ROAD "B"
BETWEEN 7TH ST. & 500 LINE RY.

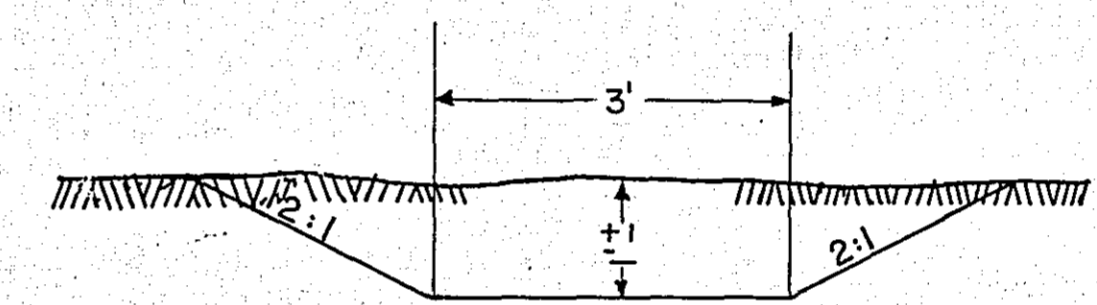
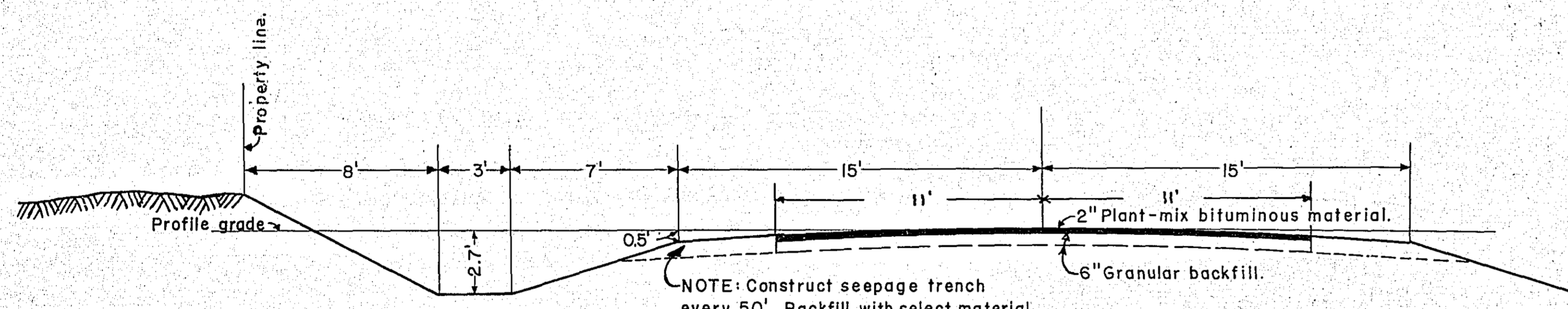
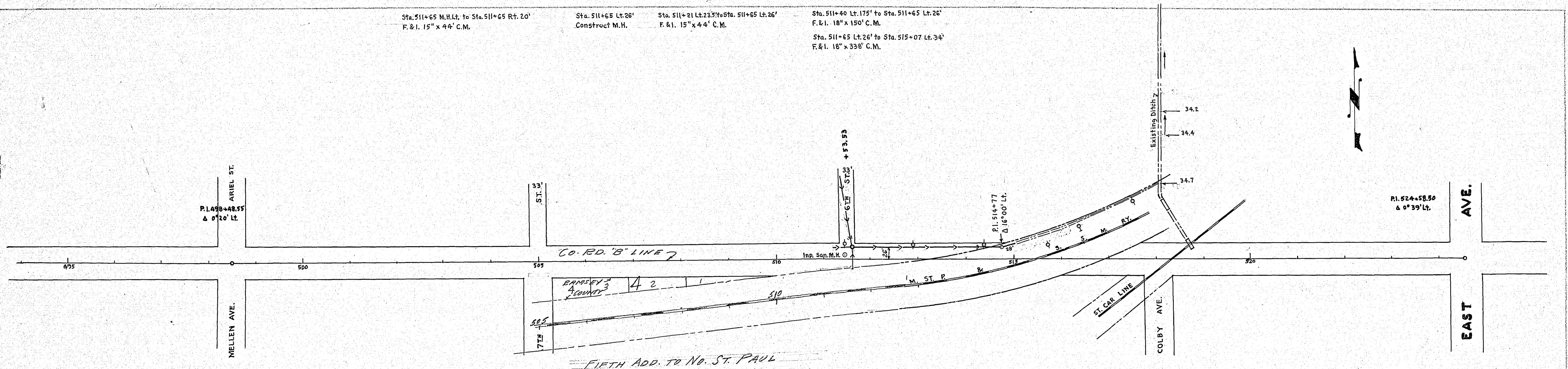
JULY 1954 SCALE AS SHOWN

REVISIONS
NO. DATE BY
1 10/15/54 H.S.B.
2 11/15/54 H.S.B.
3 12/15/54 H.S.B.
4 1/15/55 H.S.B.
5 2/15/55 H.S.B.
6 3/15/55 H.S.B.
7 4/15/55 H.S.B.
8 5/15/55 H.S.B.
9 6/15/55 H.S.B.
10 7/15/55 H.S.B.

Sta. 511+65 M.H.Lt. to Sta. 511+65 Rt. 20'
F.&I. 15" x 44' C.M.

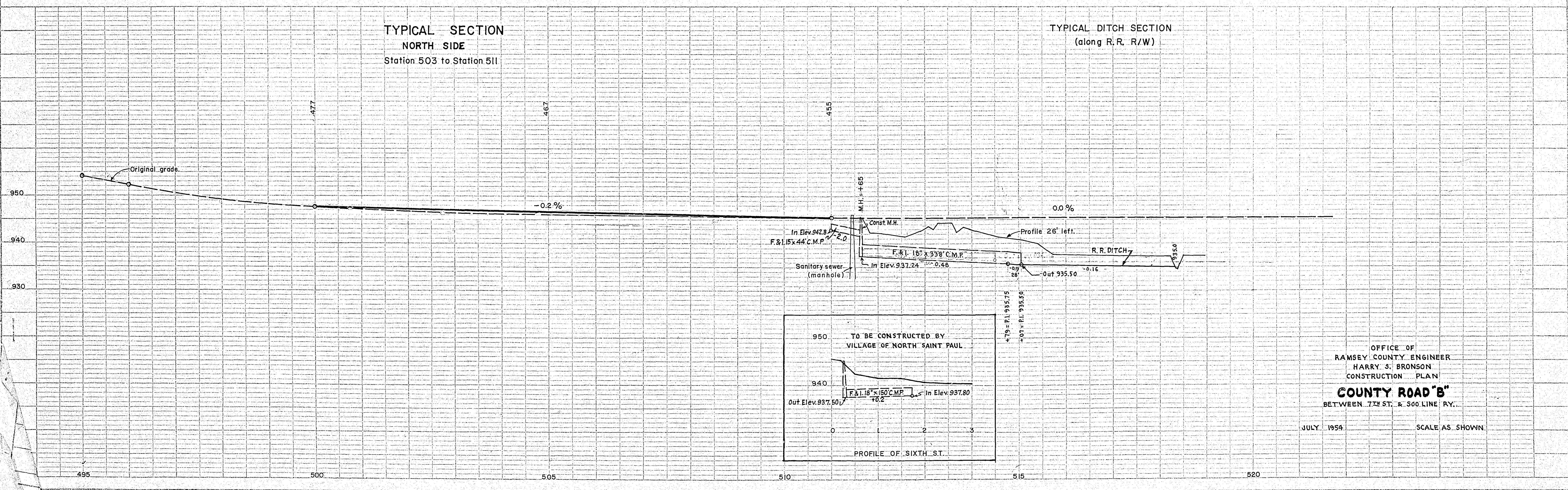
Sta. 511+65 Lt. 26' Construct M.H.
Sta. 511+21 Lt. 23.5' to Sta. 511+65 Lt. 26'
F.&I. 15" x 44' C.M.

Sta. 511+40 Lt. 175' to Sta. 511+65 Lt. 26'
F.&I. 18" x 150' C.M.
Sta. 511+65 Lt. 26' to Sta. 515+07 Lt. 34'
F.&I. 18" x 338' C.M.



TYPICAL SECTION
NORTH SIDE
Station 503 to Station 511

TYPICAL DITCH SECTION
(along R. R. R/W)



1" = 40' HORIZONTAL
1" = 10' VERTICAL

DATE: JULY 1954
DRAWN BY: H.S.B.
CHECKED BY: H.S.B.

1" = 40' HORIZONTAL
1" = 10' VERTICAL

DATE: JULY 1954
DRAWN BY: H.S.B.
CHECKED BY: H.S.B.