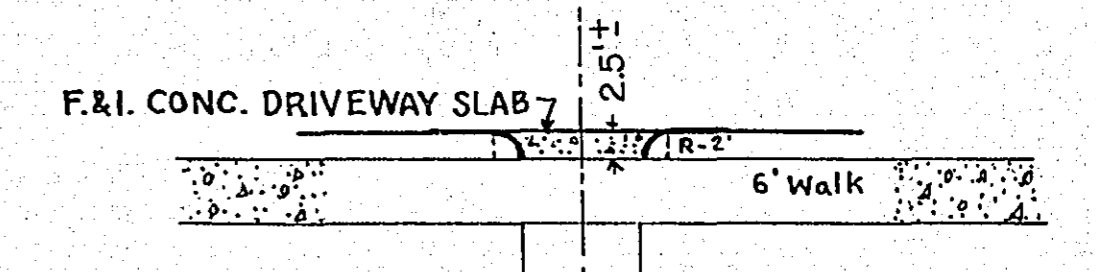
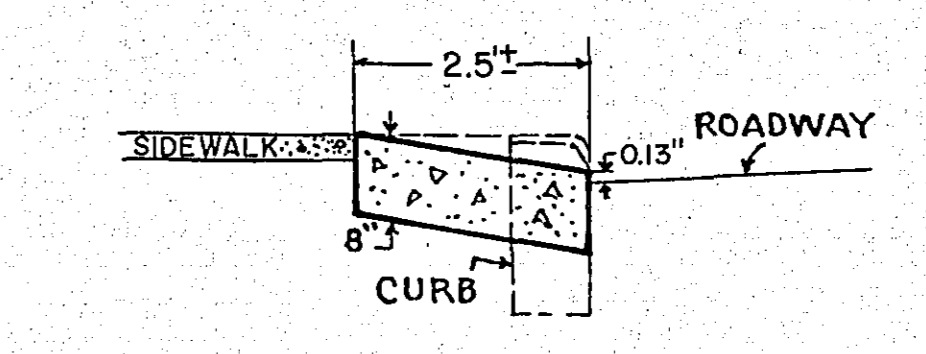
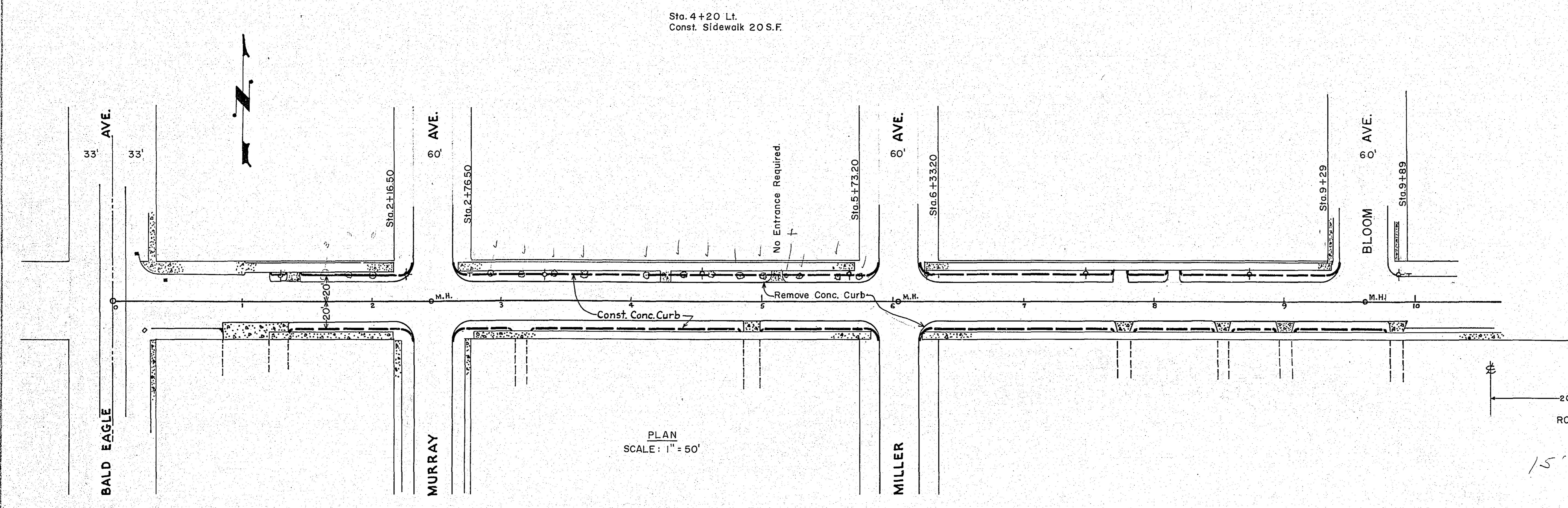
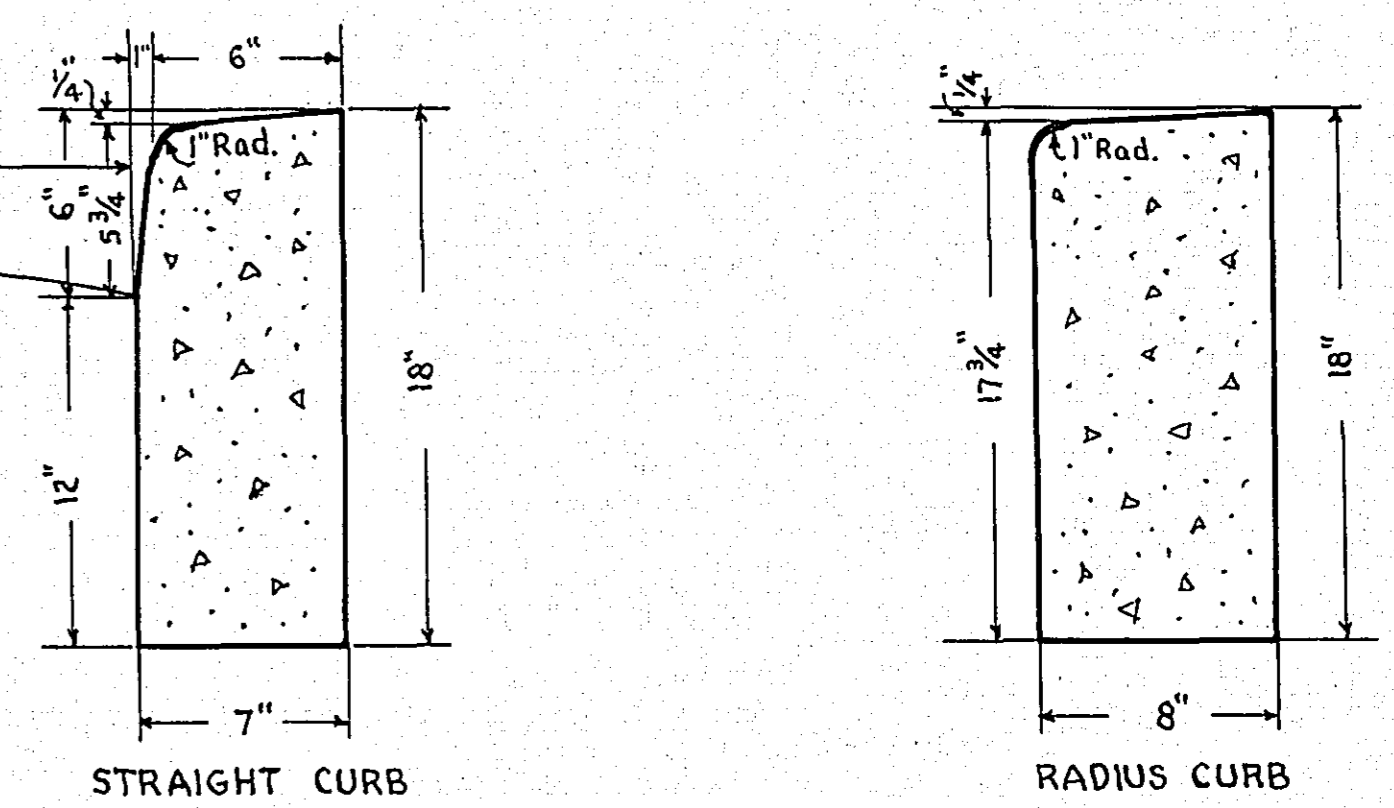


PLAN	REVISED	DATE
NO.	BY	
1		
2		
3		
4		
5		
6		
7		
8		
9		
10		

PROFILE	REVISED	DATE
NO.	BY	
1		
2		
3		
4		
5		
6		
7		
8		
9		
10		



TYPICAL ENTRANCE SECTION
STANDARD DETAIL PLATE NO. 7035 B



CURB SECTIONS
SCALE 1/8" = 1"

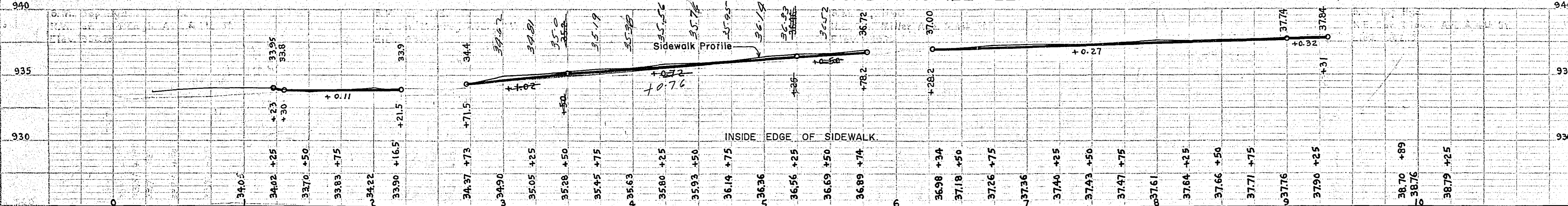
B.M. Top Hyd. N.W. Cor.
Fourth St. & Bald Eagle Ave.
Elev. 936.73

B.M. Top Hyd. N.E. Cor.
Fourth St. & Murray Ave.
Elev. 938.26

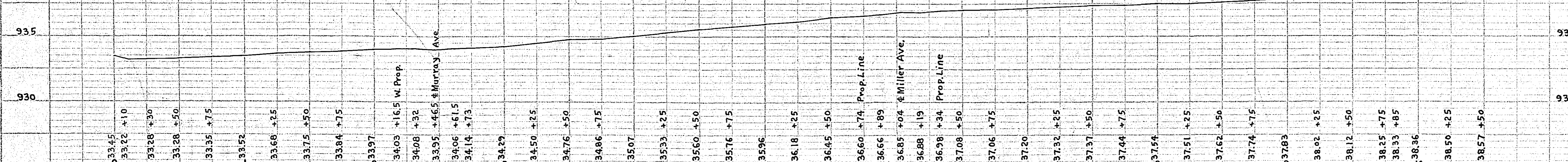
B.M. Top Hyd. N.E. Cor.
Fourth St. & Miller Ave.
Elev. 940.70

B.M. Top Hyd. N.E. Cor.
Fourth St. & Bloom Ave.
Elev. 942.19

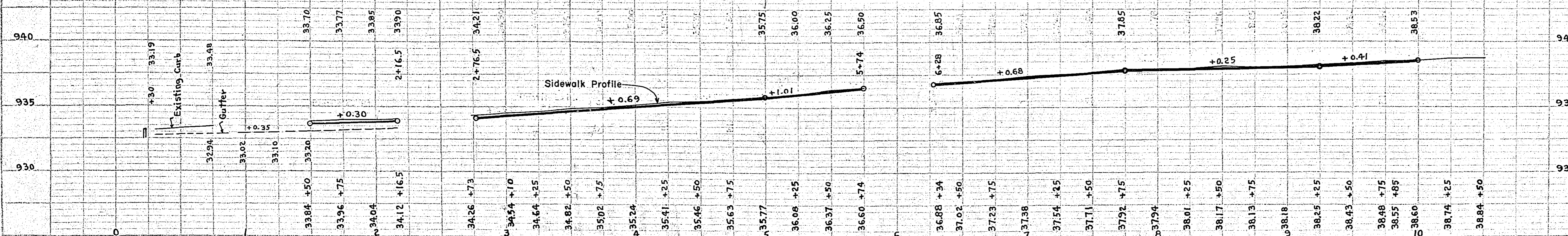
CURB PROFILE LEFT



GRADE PROFILE



CURB PROFILE RIGHT



Construct 10' Radii at Street Intersections.

ESTIMATED QUANTITIES			
SPECIFICATION NO.	ITEM	UNIT	TOTAL ESTIMATED QUANTITIES
2101.502	Clearing	Tree	14
2101.507	Grubbing	Tree	14
2104.502	Remove Pavement (Entrance)	Square Yard	100
2104.504	Remove Curb	Linear Foot	1637
2104.506	Remove Sidewalk	Square Yard	10
2105.503	Class "C" Excavation	Cubic Yard	165
2301.513	Concrete Pavement	Square Yard	54
2531.502	Concrete Curb	Linear Foot	1596
2521.501	Concrete Sidewalk 3" Thick	Square Foot	20

OFFICE OF
RAMSEY COUNTY ENGINEER
HARRY S. BRONSON
CURBING PLAN
OF
FOURTH ST.
FROM BALD EAGLE AVE. TO 1000' EAST
MAY 1956 SCALE AS SHOWN

PLANS APPROVED 6/7 1956 *Harry S. Bronson*
RAMSEY COUNTY ENGINEER

PLANS APPROVED 6/11 1956 *H. G. Goodrich*
CHAIRMAN, RAMSEY COUNTY BOARD