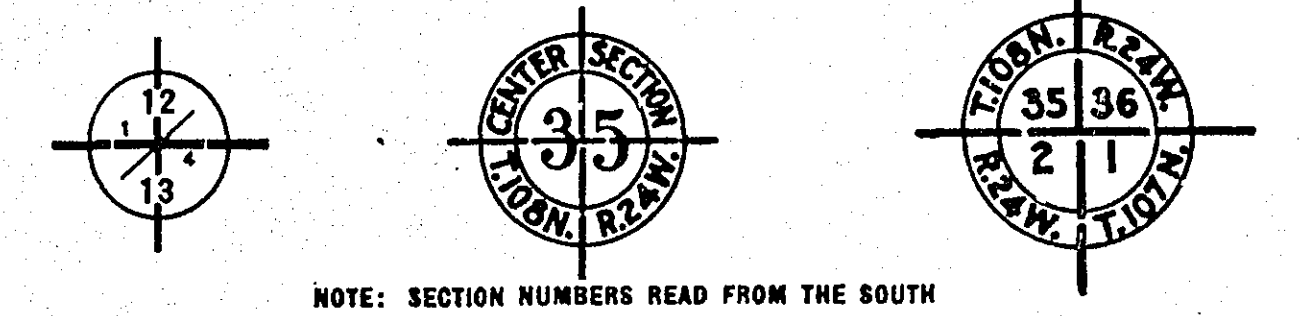


**CONVENTIONAL SIGNS**

STATE LINE		TIMBER	
COUNTY LINE		BRUSH	
TOWNSHIP OR RANGE LINE		ORCHARD	
SECTION LINE		ROCK LEDGE	
QUARTER LINE		SAND	
SIXTEENTH LINE		EDGE OF CUT	
RIGHT-OF-WAY LINE		TOE OF EMBANKMENT	
PROPERTY LINE (Except Land Lines)		CATCH BASIN	
VACATED PLATTED PROPERTY		MANHOLE	
CORPORATE OR CITY LIMITS		FIRE HYDRANT	
TRUNK HIGHWAY CENTER LINE		ARC LAMP	
RETAINING WALL		OTHER LAMPS (State Kind)	
STEAM RAILROAD		RAILROAD CROSSING SIGN	
ELECTRIC RAILROAD		RAILROAD CROSSING BELL	
RAILROAD RIGHT-OF-WAY LINE		ELECTRIC WARNING SIGN	
CREEK		CROSSING GATE	
RAPIDS OR WATERFALL		CATTLE GUARD	
DRY RUN		OVERHEAD (Highway Over)	
DRAINAGE DITCH		UNDERPASS (Highway Under)	
HIGH TENSION LINE		ABUTMENT, WALL & PIER	
POWER POLE LINE		BRIDGE	
TELEPHONE OR TELEGRAPH LINE		BUILDING (One Story Frame)	
CULVERT		F-FRAME	
DROP INLET		G-CONCRETE	
GUARD RAIL		S-STONE	
WIRE FENCE		T-TILE	
RAILROAD SNOW FENCE		B-BRICK	
BOARD OR HIGHWAY SNOW FENCE		ST-STUCCO	
STONE WALL OR FENCE		IRON PIPE	
HEDGE		STONE MONUMENT	
WATER PIPE		WOOD STAKE OR HUB	
SEWER PIPE		MEANDER CORNER	
DRAIN TILE			
GRAVEL PIT			
SAND PIT			
CLAY PIT			
ROCK QUARRY			
SPRINGS			
MARK			
TRUNK HIGHWAY R/W			
RAILROAD R/W			
PRESENT ROAD R/W			



**OFFICE OF COUNTY ENGINEER**

**RAMSEY COUNTY  
GRADING PLAN  
JOSEPHINE ROAD**

From Hamline Ave. To Lexington Ave. (T.H. No 10)

**RAMSEY COUNTY PROJ. 54-65**

GROSS LENGTH 2185 FEET 0.414 MILES  
LENGTH OF EXCEPTIONS 0 FEET 0 MILES  
NET LENGTH 2185 FEET 0.414 MILES

PLAN, 1 Inch = 100 Feet  
PROFILE, Horiz. 1 Inch = 100 Feet. Vert. 1 Inch = 10 Feet  
WORKING PLANS { Horiz. 1 Inch = 100 Feet  
Vert. 1 Inch = 10 Feet  
Cross-Sections, 1 Inch = 10 Feet

**LAYOUT**

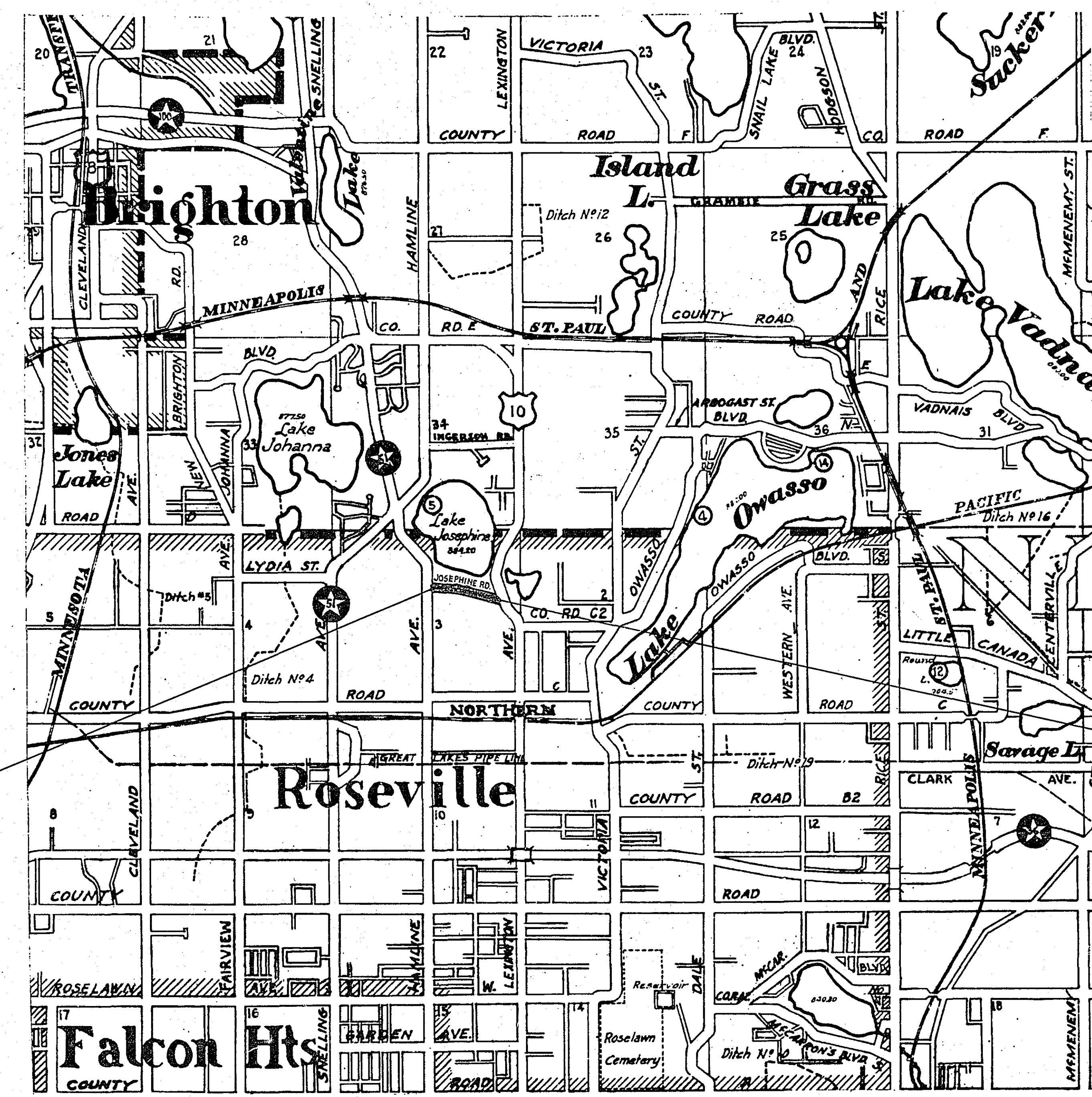
SCALE, 1 Inch = 2640 Feet

**SPECIFICATIONS**

"The Specifications for Highway Construction dated July 1, 1947, and submitted for approval by the Division Engineer of the Bureau of Public Roads on Oct. 15, 1947, as modified by 'Supplement 1' thereto dated April 15, 1953, and submitted for approval by the Division Engineer of the Bureau of Public Roads on March 25, 1953, shall govern."

**INDEX**

SHEET NO.	DESCRIPTION
1	LAYOUT MAP & TITLE SHEET
2	ESTIMATE & MISCL. DETAIL
3	PLAN & PROFILE
4-6	CROSS SECTIONS



**BEG. OF PROJ.**  
STA. 0+15

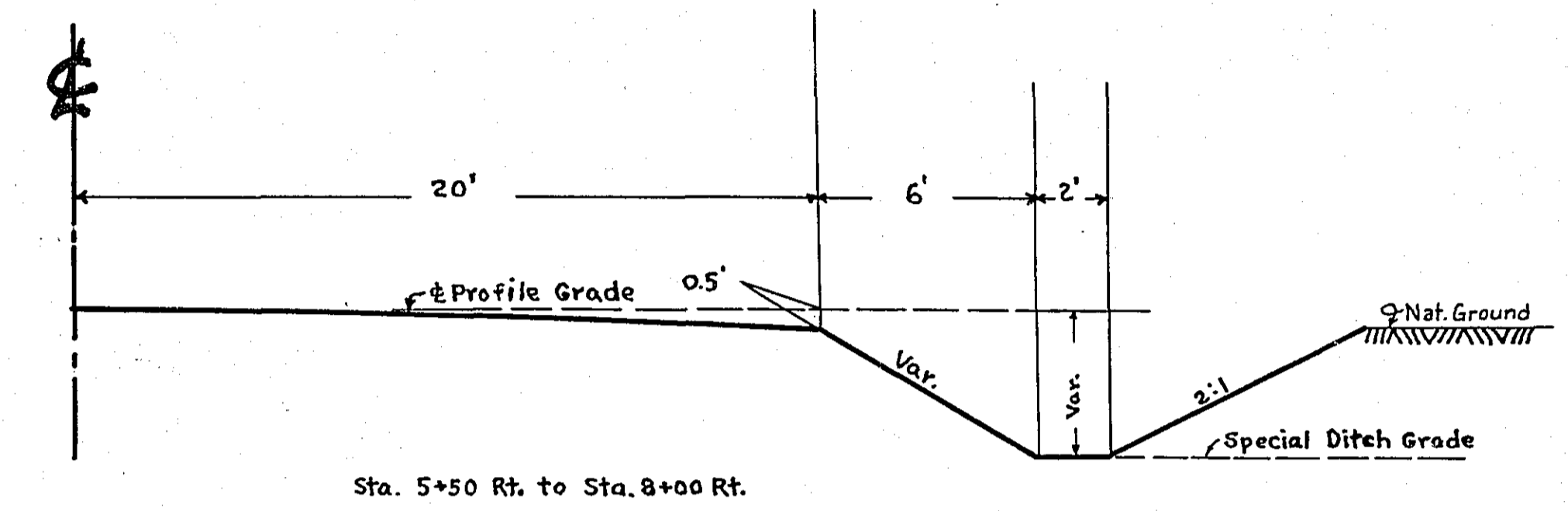
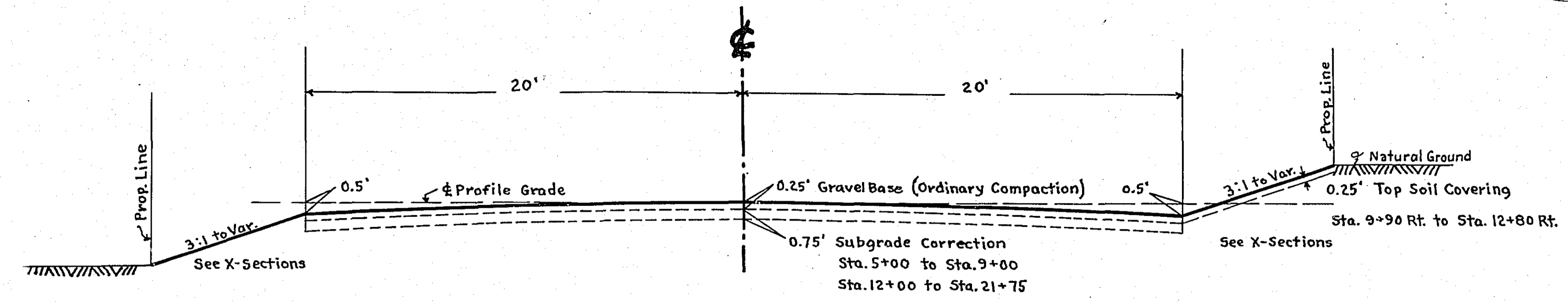
**END OF PROJ.**  
STA. 22+00

Approved *Barry J. Bronson* 3/29/54  
COUNTY ENGINEER  
Approved *John J. Schmidt* 1954  
CHAIRMAN RAMSEY COUNTY BOARD

I HEREBY CERTIFY THAT THIS PLAN WAS PREPARED BY ME OR UNDER MY DIRECT SUPERVISION AND THAT I AM A DULY REGISTERED PROFESSIONAL ENGINEER UNDER THE LAWS OF THE STATE OF MINNESOTA.  
*Barry J. Bronson*  
DATE: 3/29/54 REG. NO. 818

STATEMENT OF ESTIMATED QUANTITIES

SPECIFICATION No.	ITEM	UNIT	TOTAL ESTIMATED QUANTITIES
2101.502	CLEARING	TREE	21
2101.507	GRUBBING	TREE	25
2104.501	REMOVE PORTABLE CULVERTS	L.F.	114
2105.503	CLASS "C" EXCAVATION	C.Y.	5602
2202.527	GRAVEL BASE IN PLACE	C.Y.	1100
2501.511-12	F.&I. 12" C.M. PIPE CULVERT	L.F.	48
2501.511-18	F.&I. 18" C.M. PIPE CULVERT	L.F.	12
2501.521-24	F.&I. 24" S.C. PIPE CULVERT	L.F.	10
2501.531-15	INSTALL 15" C.M. PIPE CULVERT	L.F.	60
2503.501	TRENCH EXCAVATION (0' TO 6' DEEP)	L.F.	148
2503.512-12	F.&I. 12" R.C.P. SEWER	L.F.	8
2503.512-15	F.&I. 15" R.C.P. "	L.F.	104
2503.521-12	INSTALL 12" R.C.P. SEWER	L.F.	36
2506.501	EXCAVATION FOR MANHOLES	C.Y.	15.5
2506.506	CONSTRUCT MANHOLES (DESIGN A)	L.F.	9.7
2506.516	F.&I. CASTING ASSEMBLIES	ASSEMBLY	2



Sta. 4+59 Lt. 15' Const. M.H. 4.8 Lin. Ft. Exc. for M.H. 11.5 C.Y. Design "A" Frame #700-7 Cover #712

Sta. 4+59 Lt. 15' to Sta. 4+87 Lt. 52' F&I. 12"x8" S.C.P. Sewer Inst. 12"x36" S.C.P. Sewer Obtain from Sta. 4+87 Lt. Trench Excav. 0' to 6' Deep 44 Lin. Ft.

Sta. 4+87 Lt. 15' to Sta. 52' Lt. Inp. 12"x36" S.C.P. Sewer Remove

Sta. 4+87 Lt. 52' to Sta. 5+50 Rt. 26' F&I. 15"x104" S.C.P. Sewer Trench Excav. 0' to 6' Deep 104 Lin. Ft.

Sta. 6+97 Rt. 13.5' to Sta. 7+57 Rt. 14.5' Inp. 15"x60" C.M. Remove

Sta. 7+00 Rt. 33' to Sta. 7+60 Rt. 40' Install 15"x60" C.M. Obtain from Sta. 6+97 Rt. 13.5' to Sta. 7+57 Rt. 14.5'

Sta. 8+96 Lt. 24.5' Inp. 10"x18" C.M. Remove

Sta. 15+42 Lt. Inp. 12"x71" C.M. O.K. Leave & Extend F&I. 12"x34" C.M. Rt. F&I. 12" C.M. Band

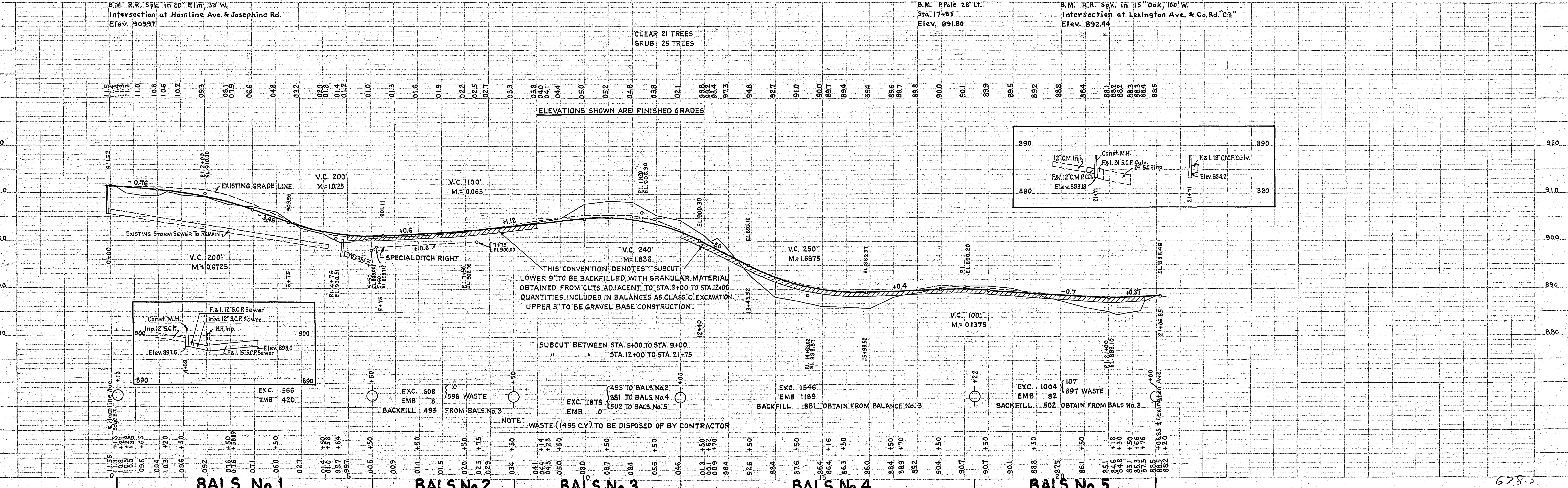
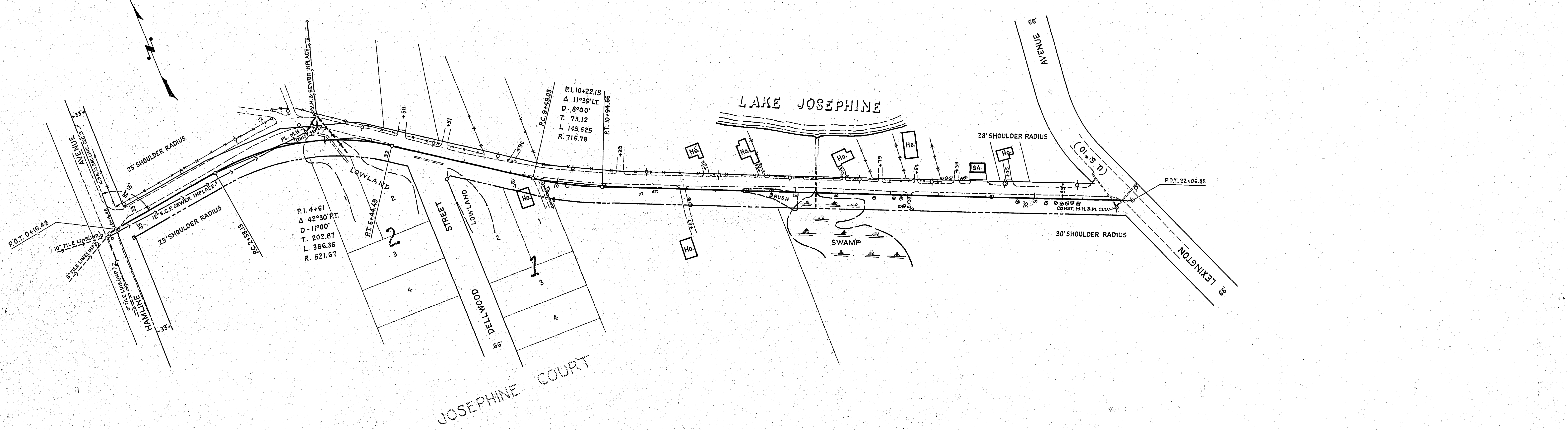
Sta. 21+19 Lt. 55' to Sta. 21+61 Rt. 1' Inp. 12"x72" C.M. O.K. Leave & Extend F&I. 12"x14" C.M. Rt. F&I. 12" C.M. Band

Sta. 21+79 Rt. 5' to Sta. 22+13 Lt. 35.5' Inp. 24"x56" S.C.P. O.K. Leave

Sta. 21+71 Rt. 14' to Sta. 21+79 Rt. 5' F&I. 24"x10" S.C.P.

Sta. 21+71 Rt. 14' Const. M.H. 4.9 L.F. Excav. for M.H. 4.0 C.Y. Design "A" (Plate No. 4000C) Frame #700-7 (Plate 4101)

Sta. 21+71 Rt. 16' to 28' Rt. Cover #712 (Plate 4111B) F&I. 18"x12" C.M.P.



DATE	
BY	
REV	
PLAN	
DATE	
BY	
REV	
NOTE BOOK	
ALIGNMENT CHECKED	
ST. OF WAY CHECKED	
NO.	

DATE	
BY	
REV	
PROFILE	
DATE	
BY	
REV	
NOTE BOOK	
GRADES CHECKED	
E.L. M. POINTS	
STRUCTURE NOTING IN CHAIN	
NO.	