

Fourth St. Water Main to be Lowered By Others.

Sta. 32+96 Rt. 17' to Sta. 33+50 Rt. 17'
F.&I. 12"x54" C.M.P.
F.&I. 2 Metal Aprons

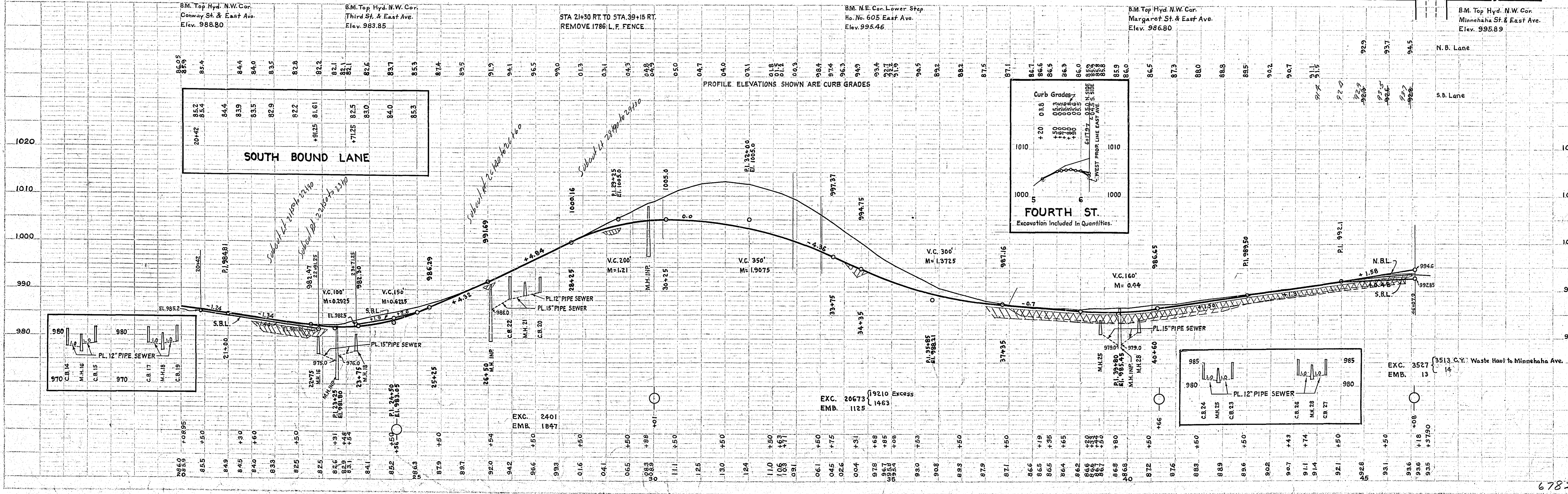
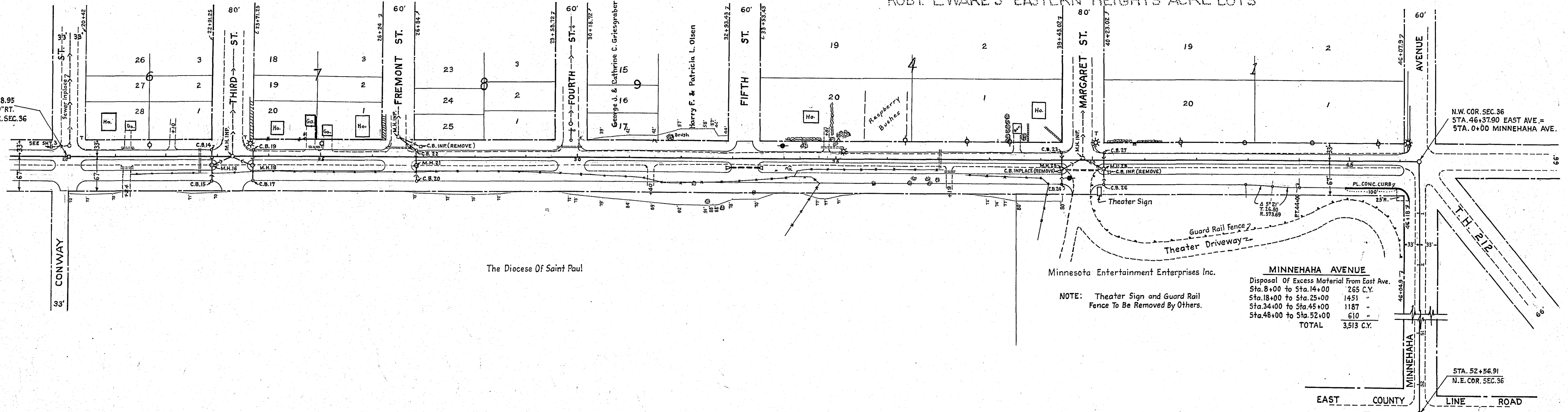
FOOSHE'S EAST HOME ADD. NO. 3

FOOSHE'S EAST HOME ADD. NO. 4

ROBT. L. WARE'S EASTERN HEIGHTS ACRE LOTS

DATE	
BY	
PLAN	
REVISIONS	
NO. 1	
NO. 2	
NO. 3	
NO. 4	
NO. 5	
NO. 6	
NO. 7	
NO. 8	
NO. 9	
NO. 10	

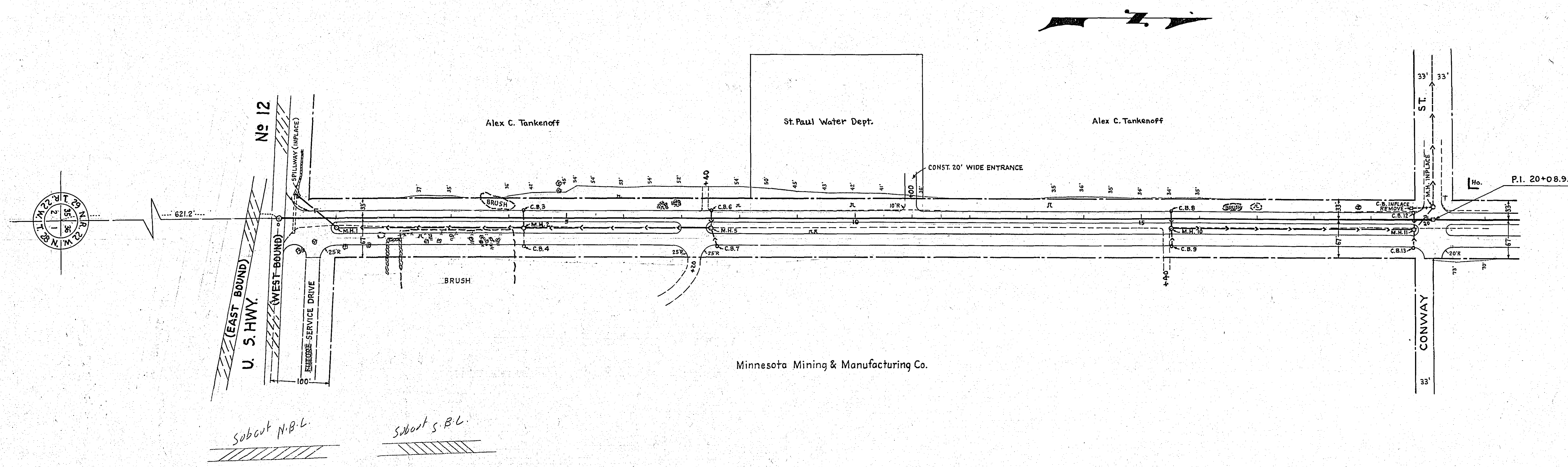
DATE	
BY	
PROFILE	
REVISIONS	
NO. 1	
NO. 2	
NO. 3	
NO. 4	
NO. 5	
NO. 6	
NO. 7	
NO. 8	
NO. 9	
NO. 10	



6782

PLAN
 SHEET NO. 3
 NOTE BOOK GRADING SHEET
 DATE OF ANY CHECKS

PROFILE
 SHEET NO. 3
 NOTE BOOK GRADING SHEET
 DATE OF ANY CHECKS



B.M. Brass Plug
 @ No Lane T.H. #12
 Elev. 968.63
 968.93 = 11-25-59 L.C.

B.M. Spk in trip 12" B.E.
 Elev. 994.24

B.M. Top Hyd. N.W. Cor.
 Conway Ave. & East Ave.
 Elev. 988.80

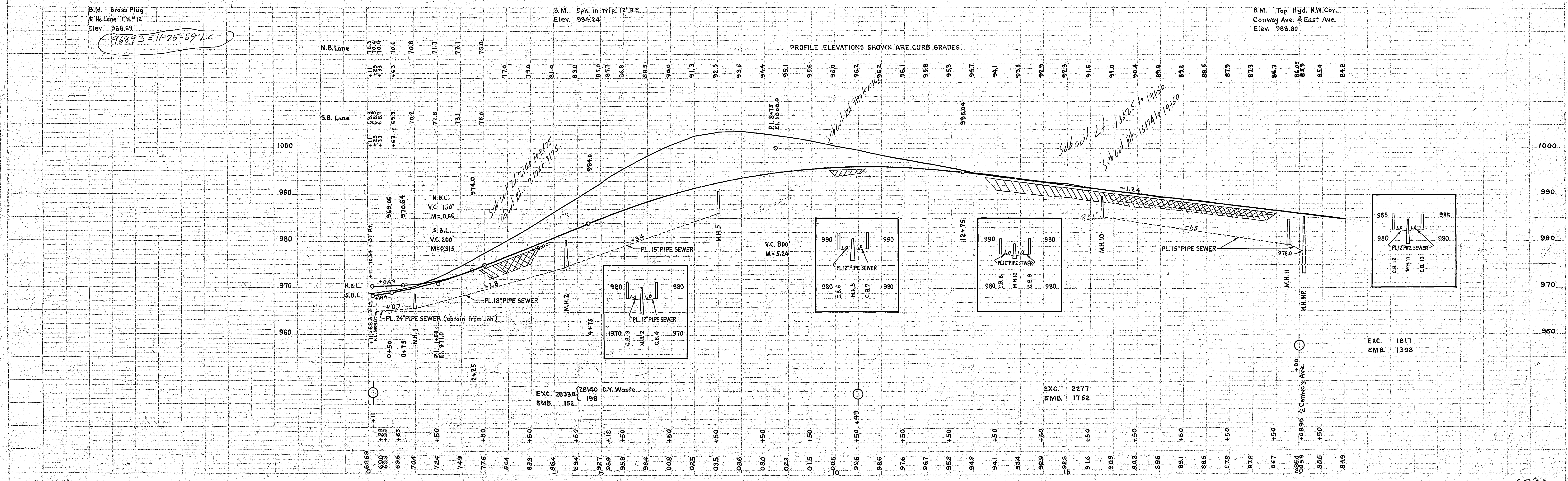


PLATE 1-PLAN, PROFILE, CURB & P.W. SHOWN
 DRAWN BY [Name]
 CHECKED BY [Name]

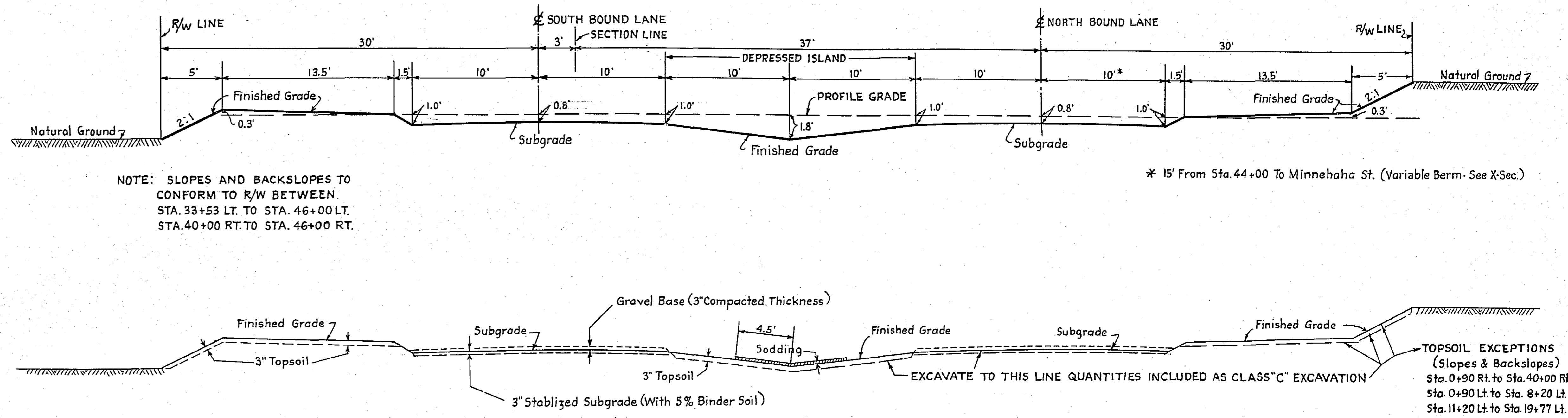
East Ave 6782

6782

STATEMENT OF ESTIMATED QUANTITIES

SPECIFICATION NO.	ITEM	UNIT	TOTAL ESTIMATED QUANTITIES
2101.502	CLEARING	TREE	47
2101.507	GRUBBING	TREE	50
2104.501	REMOVE PORTABLE CULVERT	L.F.	369
2104.510	REMOVE FENCE	L.F.	1766
2104.511	REMOVE CATCH BASINS	STRUCTURE	4
2106.503	CLASS "C" EXCAVATION	C.Y.	59,033
2117.503	BINDER SOIL IN PLACE	C.Y.	115
2117.504	STABILIZING	S.Y.	20,500
2202.527	GRAVEL BASE IN PLACE	C.Y.	2300
2130.501	WATER	(M) GALLONS	135
2503.501	TRENCH EXCAVATION (0' TO 6' DEEP)	L.F.	1956
2503.512-12	F&I. 12" R.C.P. SEWER	L.F.	527
2503.512-15	F&I. 15" R.C.P.	L.F.	620
2503.512-18	F&I. 18" R.C.P.	L.F.	725
2503.521-24	INSTALL 24" R.C.P. SEWER	L.F.	84
2506.501	EXCAVATION FOR C.B. & M.H.	C.Y.	222.2
2506.506	CONSTRUCT MANHOLES (DESIGN A or C)	L.F.	41.3
2506.507	CONSTRUCT CATCH BASINS (DESIGN C)	L.F.	53.6
2506.511	RECONSTRUCT MANHOLES	L.F.	2.5
2506.516	F&I CASTING ASSEMBLIES	ASSEMBLY	28
2506.522	ADJUST FRAME & RING CASTINGS	ASSEMBLY	2
2531.501	CONCRETE CURB DESIGN V-6	L.F.	320
2574.501	ROADSIDE SEEDING	ACRE	3.1
2576.501	AREA SODDING	S.Y.	4125
2501.511-12	F&I. 12" C.M. PIPE CULV.	L.F.	64
2515.531-12	F&I. METAL APRON FOR C.M. PIPES	APRON	2

TYPICAL GRADING SECTIONS



STATION	LOC.	REMARKS	STRUCTURE			ELEV.		F&I. CAST. ASSEM.	CONST. CONC. CURB DESIGN V-6 LIN. FT.	STRUCTURE NO.	F&I. PIPE SEWER LIN. FT.				TRENCH EXC. LIN. FT.		
			NO.	TYPE	CONST. DESIGN	EXC. CU. YDS.	IN. FT.				TOP OF GRATE OR RING	OUTLET	12"	15"		18"	24"
0+37	38' Lt.	From Spillway					965.0			M.H. 1				84			
1+00	17' Rt.		1	M.H.	A or C	6.7	3.3	968.8	965.6	A			325	325			
4+25	14' Lt.		3	C.B.	C	6.7	2.9	981.4	978.0	B	10			31			
4+25	48' Rt.		4	C.B.	C	6.7	2.9	981.4	978.0	B	10			31			
4+25	17' Rt.		2	M.H.	A or C	14.8	5.7	980.3	974.7	A			325	325			
7+50	14' Lt.		6	C.B.	C	6.7	2.9	991.9	988.5	B	10			31			
7+55	48' Rt.		7	C.B.	C	6.7	2.9	992.0	988.6	B	10			31			
7+50	17' Rt.		5	M.H.	A or C	11.6	4.9	990.8	986.0	A							
15+74	14' Lt.		8	C.B.	C	6.7	2.9	990.7	987.3	B	10			31			
15+74	48' Rt.		9	C.B.	C	6.7	2.9	990.7	987.3	B	10			31			
15+74	17' Rt.		10	M.H.	A or C	9.9	4.4	989.6	985.3	A							
19+74	17' Rt.		11	M.H.	A or C	14.4	5.5	984.7	979.3	A			400	400			
19+74	14' Lt.		12	C.B.	C	6.7	2.9	985.8	982.4	B	10			31			
19+74	48' Rt.		13	C.B.	C	6.7	2.9	985.8	982.4	B	10			31			
22+86	14' Lt.		14	C.B.	C	6.7	2.9	981.1	977.7	B	10			31			
22+91	48' Rt.		15	C.B.	C	6.7	2.9	981.7	978.3	B	10			31			
22+91	17' Rt.		16	M.H.	A or C	8.1	3.8	980.0	976.3	A			42	42			
23+71	48' Rt.		17	C.B.	C	6.7	2.9	981.7	978.3	B	10			31			
23+71	17' Rt.		18	M.H.	A or C	7.5	3.6	980.5	977.0	A			42	42			
23+76	14' Lt.		19	C.B.	C	6.7	2.9	982.0	978.6	B	10			31			
26+89	48' Rt.		20	C.B.	C	6.7	2.9	993.0	989.6	B	10			31			
26+89	17' Rt.		21	M.H.	C	5.5	2.8	991.7	989.0	A			31	31			
26+89	14' Lt.		22	C.B.	A	10.7	4.3	993.0	988.2	B	10			42			
39+38	14' Lt.		23	C.B.	C	6.7	2.9	985.2	981.8	B	10			31			
39+43	48' Rt.		24	C.B.	C	6.7	2.9	985.2	981.8	B	10			31			
39+43	17' Rt.		25	M.H.	A or C	6.2	3.1	984.0	981.0	A			44	44			
40+23	48' Rt.		26	C.B.	C	6.7	2.9	985.8	982.4	B	10			31			
40+28	14' Lt.		27	C.B.	C	6.7	2.9	985.8	982.4	B	10			31			
40+23	17' Rt.		28	M.H.	A or C	9.3	4.2	984.6	981.5	A			44	44			
								218.6	94.9		180		527	620	725	84	1956

Casting Assembly "A" - Includes Castings Nos. 700-7, & 730-6
 "B" - " " " " Nos. 770-872-810 & 831

CLEARING & GRUBBING

STA. TO STA.	LOC.	CLEARING TREE	GRUBBING TREE
0+00 to 4+00	Rt.	17	17
4+00 to 8+00	Lt.	10	6
8+00 to 9+00	Rt. & Lt.	0	3
13+00 to 19+00	Lt.	1	3
25+00 to 32+00	Lt.	6	4
32+00 to 34+00	Rt.	3	4
34+00 to 35+00	Rt. & Lt.	4	7
35+00 to 37+00	Rt.	6	6
		47	50

SODDING

STA. TO STA.	LOC.	REMARKS	SODDING SY. YDS.
0+90 to 6+90	12.5 to 21.5 Rt.	DEPRESSED ISLAND	600
7+50 to 19+84	" " "	" " "	1234
20+44 to 23+01	" " "	" " "	257
23+61 to 26+29	" " "	" " "	268
26+79 to 29+64	" " "	" " "	285
30+14 to 32+98	" " "	" " "	284
33+48 to 39+53	" " "	" " "	605
40+13 to 46+05	" " "	" " "	592
			4125

INTERSECTION DETAILS

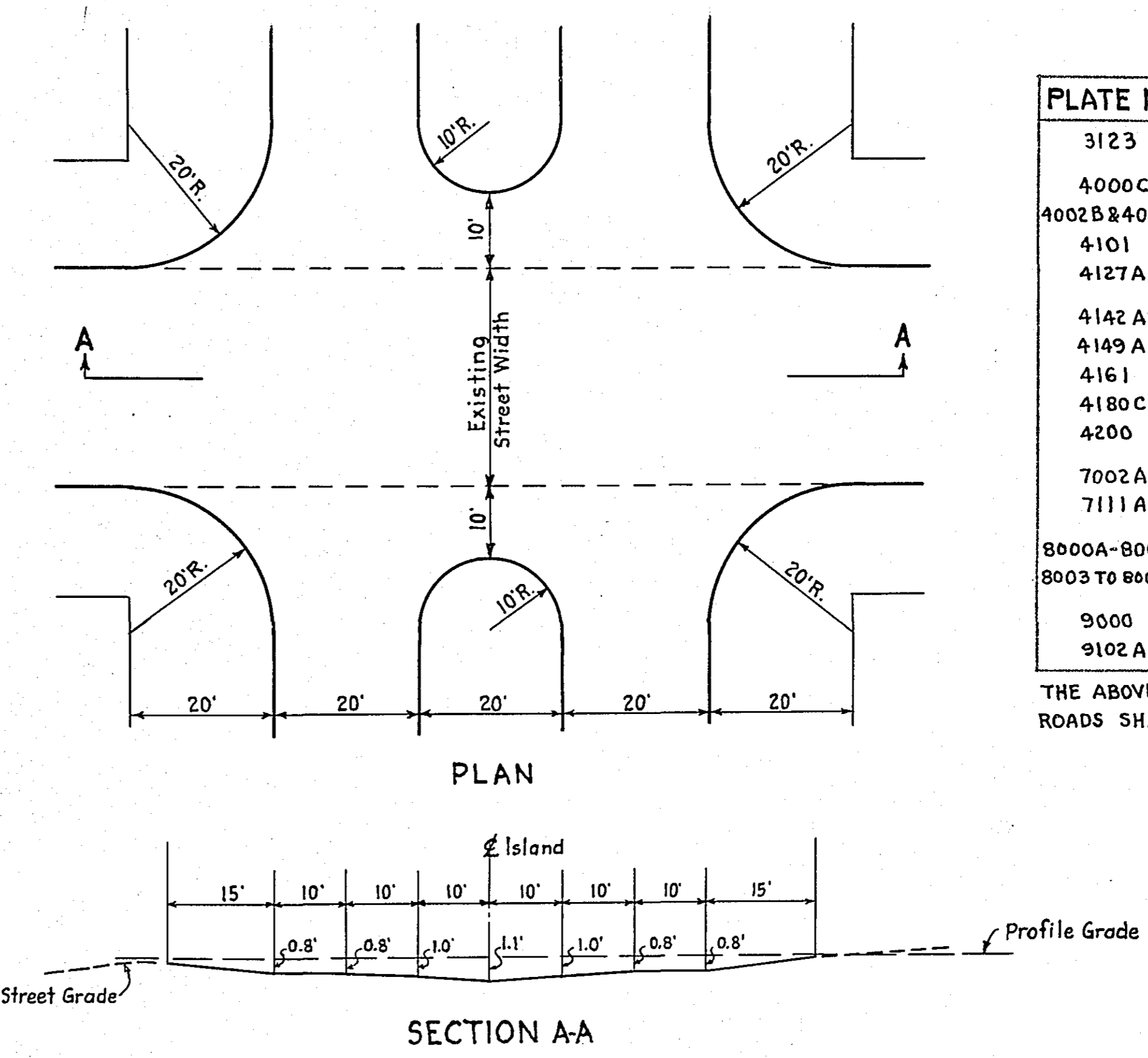


PLATE NO. STANDARD DETAIL PLATES

3123	METAL APRON FOR C.M. PIPES
4000C	MANHOLE OR CATCH BASIN
4002B & 4006B	MANHOLE OR CATCH BASIN
4101	RING CASTING FOR MANHOLE OR CATCH BASIN
4127A	CATCH BASIN FRAME CASTING
4142A	BEEHIVE GRATE CASTING FOR CATCH BASIN
4149A	GRATE CASTING FOR CATCH BASIN
4161	CURB BOX CASTING FOR CATCH BASIN
4180C	MANHOLE STEP CASTING
4200	REINFORCED CONCRETE SEWER PIPE WITH STEEL FABRIC REINF.
7002A	INTEGRANT CURB V-6
7111A	INSTALLATION OF CATCH BASIN CASTINGS
8000A-8001	STANDARD BARRICADES AND STANDARD SECONDARY BARRICADES
8003 TO 8006A	SIGNS, FENCE, AND PLACEMENTS
9000	APPROACHES AND ENTRANCES
9102A	SODDING AT PIPE CULVERT ENDS

THE ABOVE STANDARD DETAIL PLATES, APPROVED BY THE BUREAU OF PUBLIC ROADS SHALL APPLY ON THESE PROJECTS.

RECONSTRUCT MANHOLES

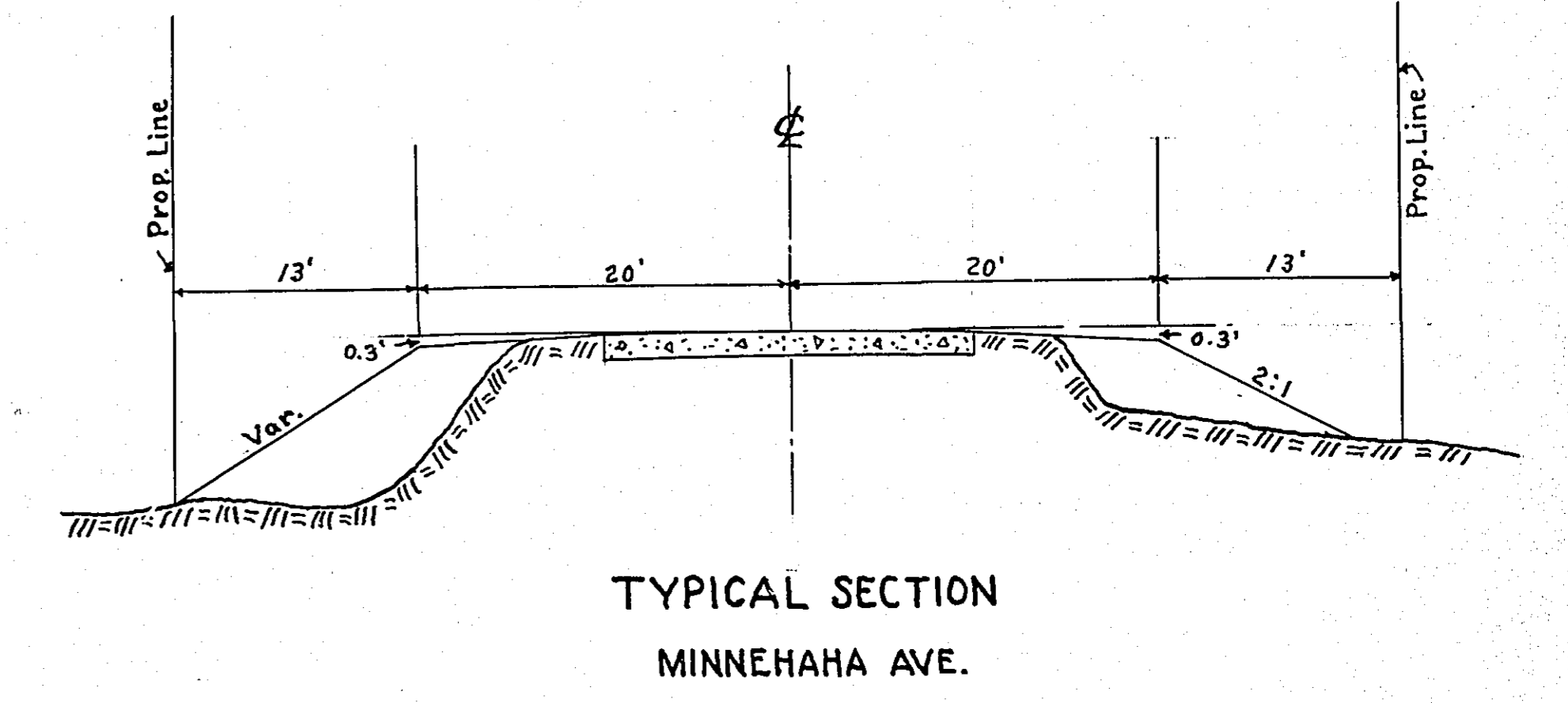
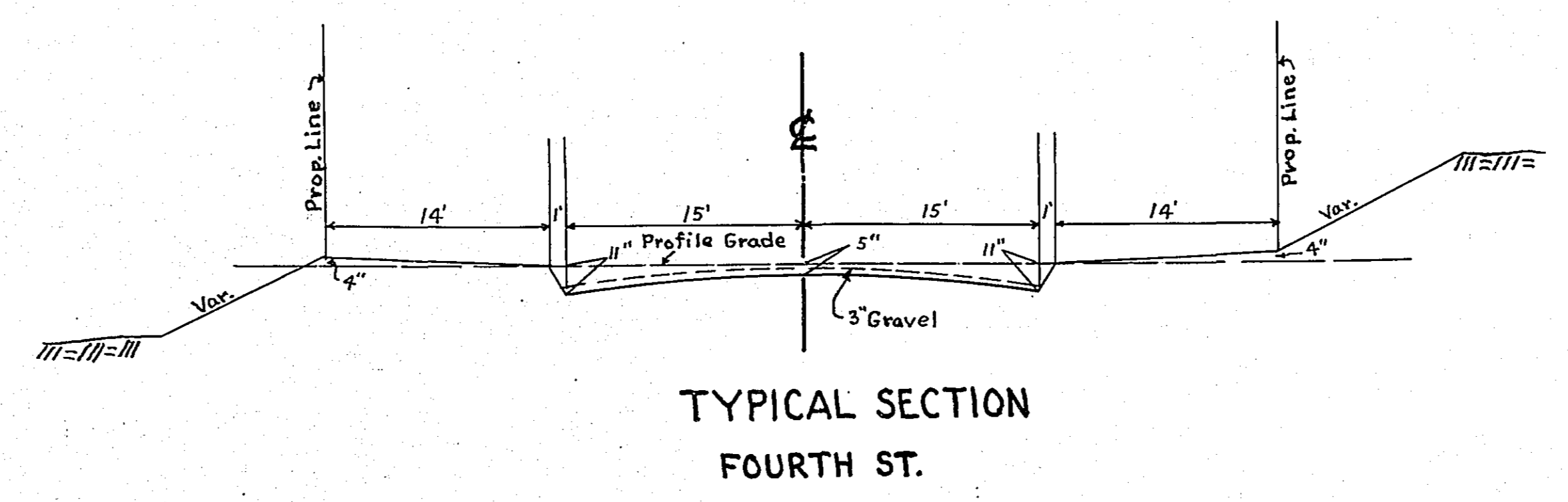
STA. TO STA.	LOC.	IN PLACE	RECONSTRUCT TYPE	CONST. DESIGN	EXCAV. CU. YD.	LINEAR FEET	ELEVATION TOP OF RING	REMARKS
23+31	±	M.H.	M.H.	—	—	—	981.6	Adjust Ring
29+88	66.5' Lt.	M.H.	M.H.	—	3.6	2.5	905.3	
39+83	5' Lt.	M.H.	M.H.	—	—	—	985.6	Adjust Ring

MISCELLANEOUS

STATION	LOCATION	IN PLACE	REMARKS	MANHOLES & CATCH BASIN STRUCTURES
19+71	19.5' Lt.	C.B.	REMOVE	1
26+99	21' Lt.	C.B.	"	1
39+34	20' Rt.	C.B.	"	1
40+31	21' Rt.	C.B.	"	1
				4

PORTABLE CULVERTS

STATION	LOCATION	IN PLACE	REMARKS	REMOVE PORTABLE CULVERTS LIN. FT.
21+24	ENT. RT.	12" C.M.	NO CULV. REQD.	24
21+25	ENT. LT.	15" C.M.	" " "	20
22+66	±	24" S.C.P.	To 0+50 Lt.	48
24+85	ENT. LT.	12" C.M.	NO CULV. REQD.	24
26+54	RD. LT.	12" C.M.	" " "	48
29+88	RD. LT.	12" C.M.	" " "	42
34+81	ENT. LT.	12" C.M.	" " "	40
37+02	±	24" S.C.P.	To 0+50 Lt.	36
37+19	ENT. RT.	15" C.M.	NO CULV. REQD.	26
39+83	ENT. RT.	15" C.M.	" " "	61
				369



CONVENTIONAL SIGNS

STATE LINE	=====	TIMBER	
COUNTY LINE	=====	BRUSH	
TOWNSHIP OR RANGE LINE	=====	ORCHARD	
SECTION LINE	=====	ROCK LEDGE	
QUARTER LINE	=====	SAND	
SIXTEENTH LINE	=====	EDGE OF CUT	
RIGHT-OF-WAY LINE	=====	TOE OF EMBANKMENT	
PROPERTY LINE (Except Land Lines)	=====	CATCH BASIN	
VACATED PLATTED PROPERTY	=====	MANHOLE	
CORPORATE OR CITY LIMITS	=====	FIRE HYDRANT	
TRUNK HIGHWAY CENTER LINE	=====	ARC LAMP	
RETAINING WALL	=====	OTHER LAMPS (State Kind)	
STEAM RAILROAD	=====	RAILROAD CROSSING SIGN	
ELECTRIC RAILROAD	=====	RAILROAD CROSSING BELL	
RAILROAD RIGHT-OF-WAY LINE	=====	ELECTRIC WARNING SIGN	
CREEK		CROSSING GATE	
RAPIDS OR WATERFALL		CATTLE GUARD	
DRY RUN		OVERHEAD (Highway Over)	
DRAINAGE DITCH		UNDERPASS (Highway Under)	
HIGH TENSION LINE	=====	ABUTMENT, WALL & PIER	
POWER POLE LINE	=====	BRIDGE	
TELEPHONE OR TELEGRAPH LINE	=====	BUILDING (One Story Frame)	
CULVERT		F-FRAME C-CONCRETE	
DROP INLET		S-STONE T-TILE	
GUARD RAIL	=====	B-BRICK ST-STUCCO	
WIRE FENCE	=====	IRON PIPE	
RAILROAD SNOW FENCE	=====	STONE MONUMENT	
BOARD OR HIGHWAY SNOW FENCE	=====	WOOD STAKE OR HUB	
STONE WALL OR FENCE	=====	MEANDER CORNER	
HEDGE	=====		
WATER PIPE	=====		
SEWER PIPE	=====		
DRAIN TILE	=====		
GRAVEL PIT			
SAND PIT			
CLAY PIT			
ROCK QUARRY			
SPRINGS			
MARSH			
TRUNK HIGHWAY R/W	=====		
RAILROAD R/W	=====		
PRESENT ROAD R/W	=====		

OFFICE OF COUNTY ENGINEER RAMSEY COUNTY GRADING PLAN EAST AVE.

From T. H. No 12 To Minnehaha St. (T. H. No 212)

RAMSEY COUNTY PROJ. 54-38

GROSS LENGTH 4617 FEET 0.87 MILES
LENGTH OF EXCEPTIONS 0 FEET 0 MILES
NET LENGTH 4617 FEET 0.87 MILES

PLAN, 1 Inch = 100 Feet
PROFILE, Horz. 1 Inch = 100 Feet. Vert. 1 Inch = 10 Feet
WORKING PLANS { Horz. 1 Inch = 100 Feet
Vert. 1 Inch = 10 Feet
Cross-Sections, 1 Inch = 10 Feet

LAYOUT

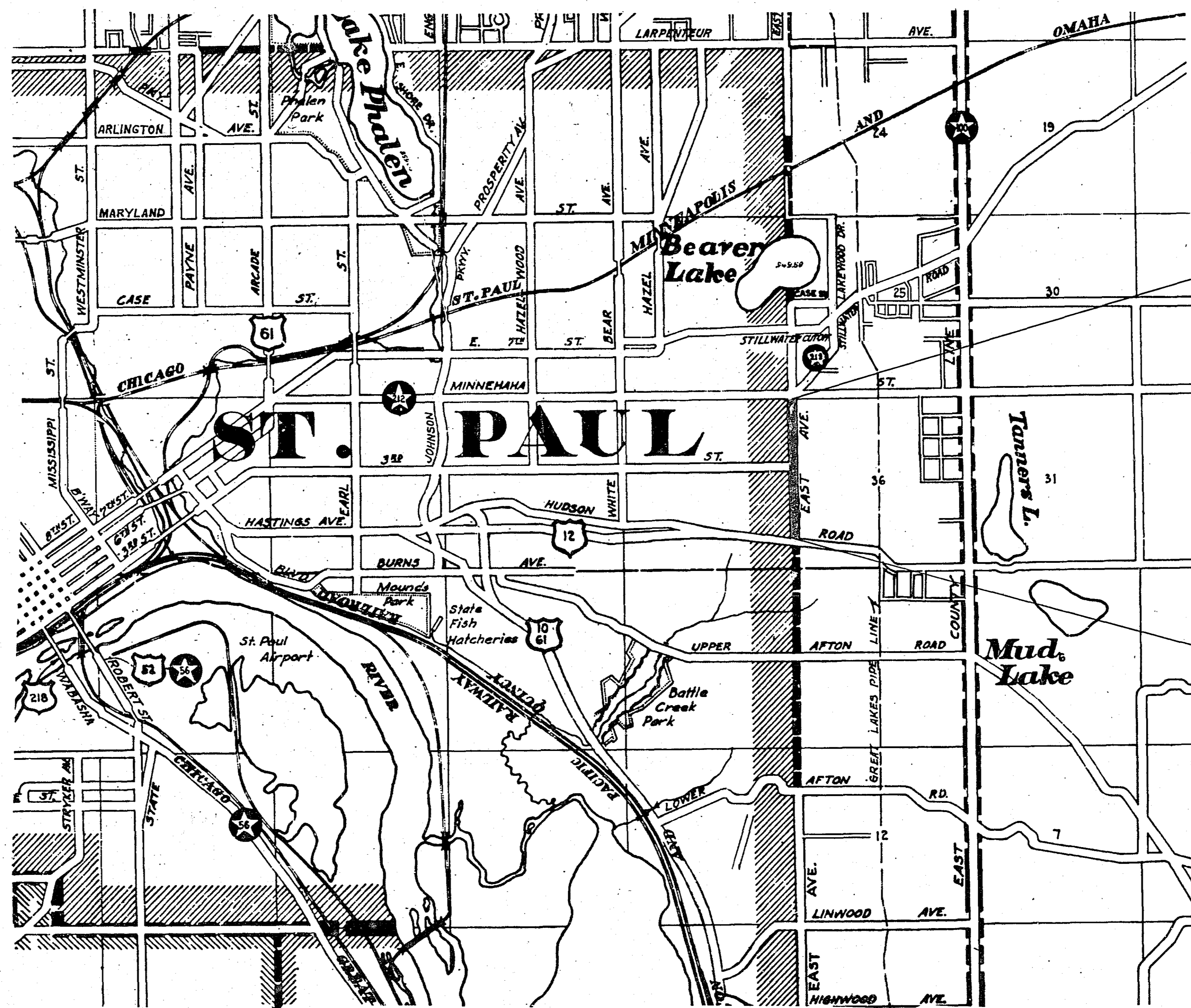
SCALE, 1 Inch = 2640 Feet

SPECIFICATIONS

The Specifications for Highway Construction dated July 1, 1947, and submitted for approval by the Division Engineer of the Bureau of Public Roads on Oct. 15, 1947, as modified by Supplement 1, thereto dated April 15, 1953, and submitted for approval by the Division Engineer of the Bureau of Public Roads on March 25, 1953, shall govern.

INDEX

SHEET NO.	DESCRIPTION
1	LAYOUT MAP & TITLE SHEET
2	ESTIMATE & MISCL. DETAILS
3-4	PLAN & PROFILE
5-10	CROSS SECTIONS



END OF PROJ.
STA. 46+28

BEG. OF PROJ.
STA. 0+11

Approved: *Harry S. Bronson* COUNTY ENGINEER 3-15-54

Approved: *James M. Steward* CHIEF ENGINEER CITY OF ST. PAUL

Approved: 1954 *John W. Aubrey* CHAIRMAN RAMSEY COUNTY BOARD

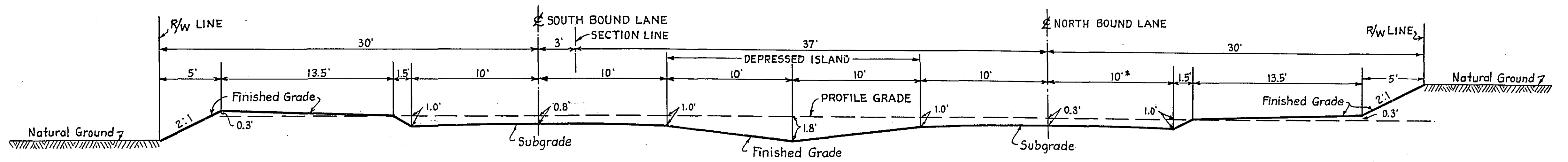
I HEREBY CERTIFY THAT THIS PLAN WAS PREPARED BY ME OR UNDER MY DIRECT SUPERVISION AND THAT I AM A DULY REGISTERED PROFESSIONAL ENGINEER UNDER THE LAWS OF THE STATE OF MINNESOTA.

Harry S. Bronson
DATE 3-12-54 REG. NO. 818

STATEMENT OF ESTIMATED QUANTITIES

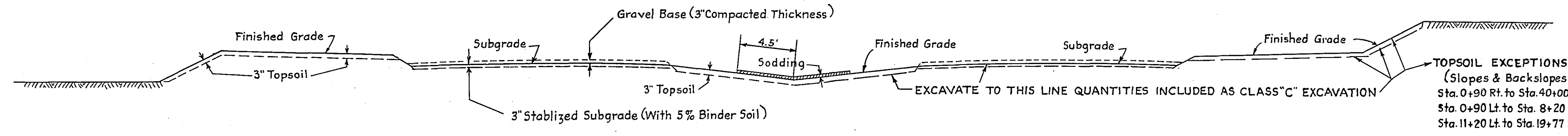
SPECIFICATION NO.	ITEM	UNIT	TOTAL ESTIMATED QUANTITIES
2101.502	CLEARING	TREE	47
2101.507	GRUBBING	TREE	50
2104.501	REMOVE PORTABLE CULVERT	L.F.	369
2104.510	REMOVE FENCE	L.F.	1786
2104.511	REMOVE CATCH BASINS	STRUCTURE	4
2105.503	CLASS "C" EXCAVATION	C.Y.	59,033
2117.503	BINDER SOIL IN PLACE	C.Y.	115
2117.504	STABILIZING	S.Y.	20,500
2202.527	GRAVEL BASE IN PLACE	C.Y.	2300
2130.501	WATER	(M) GALLONS	135
2503.501	TRENCH EXCAVATION (0' TO 6' DEEP)	L.F.	1956
2503.512-12	F&I 12" R.C.P. SEWER	L.F.	527
2503.512-15	F&I 15" R.C.P. "	L.F.	620
2503.512-18	F&I 18" R.C.P. "	L.F.	725
2503.521-24	INSTALL 24" R.C.P. SEWER	L.F.	84
2506.501	EXCAVATION FOR C.B. & M.H.	C.Y.	222.2
2506.506	CONSTRUCT MANHOLES (DESIGN A OR C)	L.F.	41.3
2506.507	CONSTRUCT CATCH BASINS (DESIGN C)	L.F.	53.6
2506.511	RECONSTRUCT MANHOLES	L.F.	2.5
2506.516	F&I CASTING ASSEMBLIES	ASSEMBLY	28
2506.522	ADJUST FRAME & RING CASTINGS	ASSEMBLY	2
2531.501	CONCRETE CURB DESIGN V-6	L.F.	320
2574.501	ROADSIDE SEEDING	ACRE	3.1
2576.501	AREA SODDING	S.Y.	4125
2501.511-12	F&I 12" C.M. PIPE CULV.	L.F.	54
2515.531-12	F&I METAL APRON FOR C.M. PIPES	APRON	2

TYPICAL GRADING SECTIONS



NOTE: SLOPES AND BACKSLOPES TO CONFORM TO R/W BETWEEN STA. 33+53 LT. TO STA. 46+00 LT. STA. 40+00 RT. TO STA. 46+00 RT.

* 15' From Sta. 44+00 To Minnehaha St. (Variable Berm - See X-Sec.)



STATION	LOC.	REMARKS	STRUCTURE			ELEV.		F&I CAST. ASSEM.	CONST. CONC. CURB DESIGN V-6 LIN. FT.	STRUCTURE NO.	F&I PIPE SEWER LIN. FT.			TRENCH EXC. LIN. FT.		
			NO.	TYPE	CONSTR. DESIGN	EXC. CU. YDS.	LIN. FT.				TOP OF GRATE OR RING	OUTLET	12"		15"	18"
0+37	38' Lt.	From Spillway	1	M.H.	A or C	6.7	3.3	968.8	965.6	A				84		
1+00	17' Rt.		1	M.H.	A or C	6.7	3.3	968.8	965.6	A			325	325		
4+25	14' Lt.		3	C.B.	C	6.7	2.9	981.4	978.0	B	10			31		
4+25	48' Rt.		4	C.B.	C	6.7	2.9	981.4	978.0	B	10			31		
4+25	17' Rt.		2	M.H.	A or C	14.8	5.7	980.3	974.7	A			325	325		
7+50	14' Lt.		6	C.B.	C	6.7	2.9	991.9	988.5	B	10			31		
7+55	48' Rt.		7	C.B.	C	6.7	2.9	992.0	988.6	B	10			31		
7+50	17' Rt.		5	M.H.	A or C	11.6	4.9	990.8	986.0	A				31		
15+74	14' Lt.		8	C.B.	C	6.7	2.9	990.7	987.3	B	10			31		
15+74	48' Rt.		9	C.B.	C	6.7	2.9	990.7	987.3	B	10			31		
15+74	17' Rt.		10	M.H.	A or C	5.9	4.4	989.6	985.3	A			400	400		
19+74	17' Rt.		11	M.H.	A or C	14.4	5.5	984.7	979.3	A			50	50		
19+74	14' Lt.		12	C.B.	C	6.7	2.9	985.8	982.4	B	10			31		
19+74	48' Rt.		13	C.B.	C	6.7	2.9	985.8	982.4	B	10			31		
22+86	14' Lt.		14	C.B.	C	6.7	2.9	981.1	977.7	B	10			31		
22+91	48' Rt.		15	C.B.	C	6.7	2.9	981.7	978.3	B	10			31		
22+91	17' Rt.		16	M.H.	A or C	8.1	3.8	980.0	976.3	A			42	42		
23+71	48' Rt.		17	C.B.	C	6.7	2.9	981.7	978.3	B	10			31		
23+71	17' Rt.		18	M.H.	A or C	7.5	3.6	980.5	977.0	A			42	42		
23+76	14' Lt.		19	C.B.	C	6.7	2.9	982.0	978.6	B	10			31		
26+89	48' Rt.		20	C.B.	C	6.7	2.9	993.0	989.6	B	10			31		
26+89	17' Rt.		21	M.H.	C	5.5	2.8	991.7	989.0	A			31	31		
26+89	14' Lt.		22	C.B.	A	10.7	4.3	993.0	988.2	B	10		42	42		
39+38	14' Lt.		23	C.B.	C	6.7	2.9	985.2	981.8	B	10			31		
39+43	48' Rt.		24	C.B.	C	6.7	2.9	985.2	981.8	B	10			31		
39+43	17' Rt.		25	M.H.	A or C	6.2	3.1	984.0	981.0	A			44	44		
40+23	48' Rt.		26	C.B.	C	6.7	2.9	985.8	982.4	B	10			31		
40+28	14' Lt.		27	C.B.	C	6.7	2.9	985.8	982.4	B	10			31		
40+23	17' Rt.		28	M.H.	A or C	9.3	4.2	984.6	981.5	A			44	44		
						218.6	94.9				180	527	620	725	84	1956
							+3.6									222.2

Casting Assembly "A" - Includes Castings Nos. 700-7, & 730-6
"B" - " " " " Nos. 770-872-810 & 831

CLEARING & GRUBBING			
STA. TO STA.	LOC.	CLEARING TREE	GRUBBING TREE
0+00 to 4+00	Rt.	17	17
4+00 to 8+00	Lt.	10	6
8+00 to 9+00	Rt. & Lt.	0	3
13+00 to 19+00	Lt.	1	3
25+00 to 32+00	Lt.	6	4
32+00 to 34+00	Rt.	3	4
34+00 to 35+00	Rt. & Lt.	4	7
35+00 to 37+00	Rt.	6	6
		47	50

SODDING			
STA. TO STA.	LOC.	REMARKS	SODDING SY. YDS.
0+90 to 6+90	12.5 to 21.5 Rt.	DEPRESSED ISLAND	600
7+50 to 19+84	" " " "	" " " "	1234
20+44 to 23+01	" " " "	" " " "	257
23+61 to 26+29	" " " "	" " " "	268
26+79 to 29+64	" " " "	" " " "	285
30+14 to 32+98	" " " "	" " " "	284
33+48 to 39+53	" " " "	" " " "	605
40+13 to 46+05	" " " "	" " " "	592
			4125

INTERSECTION DETAILS

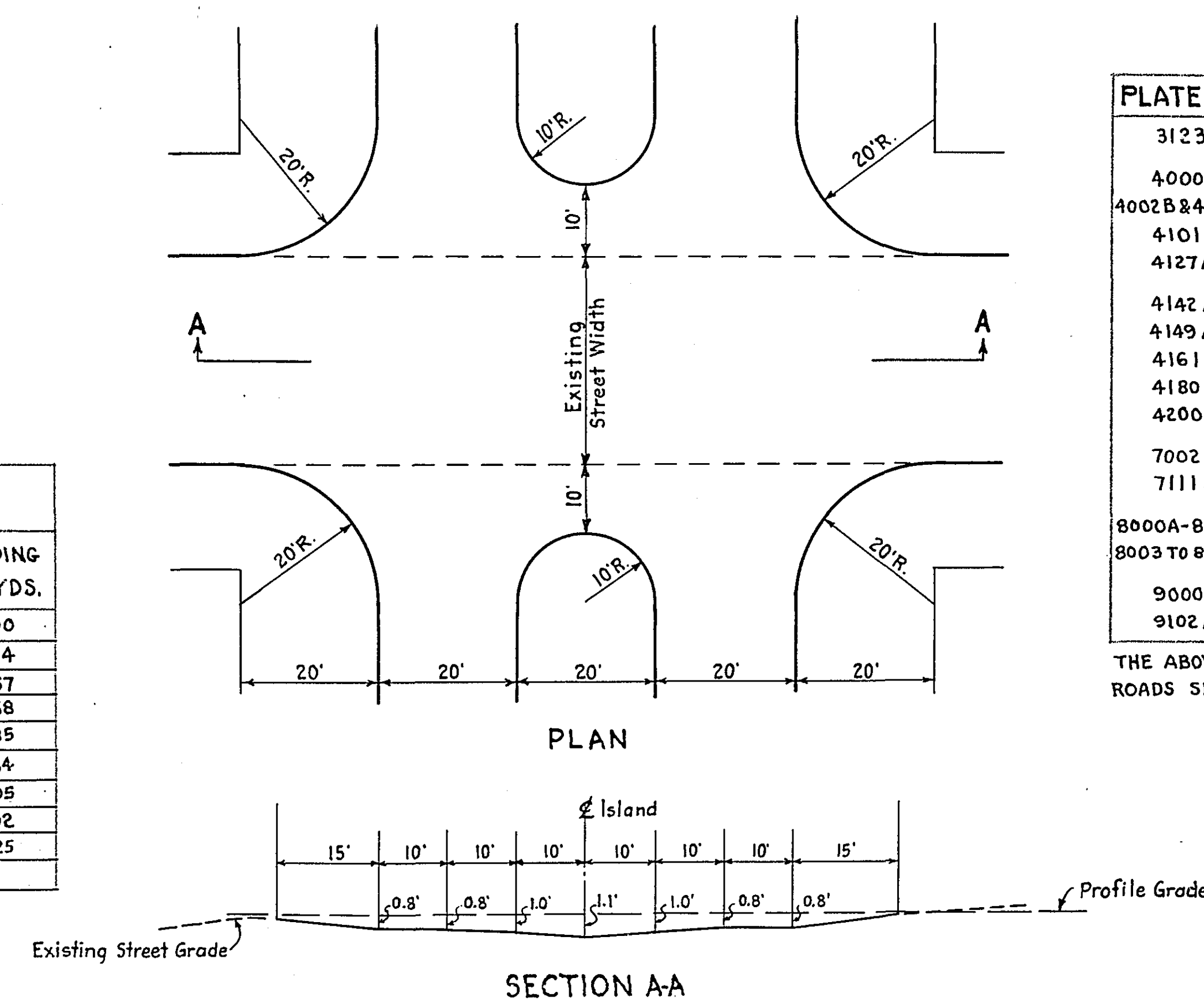


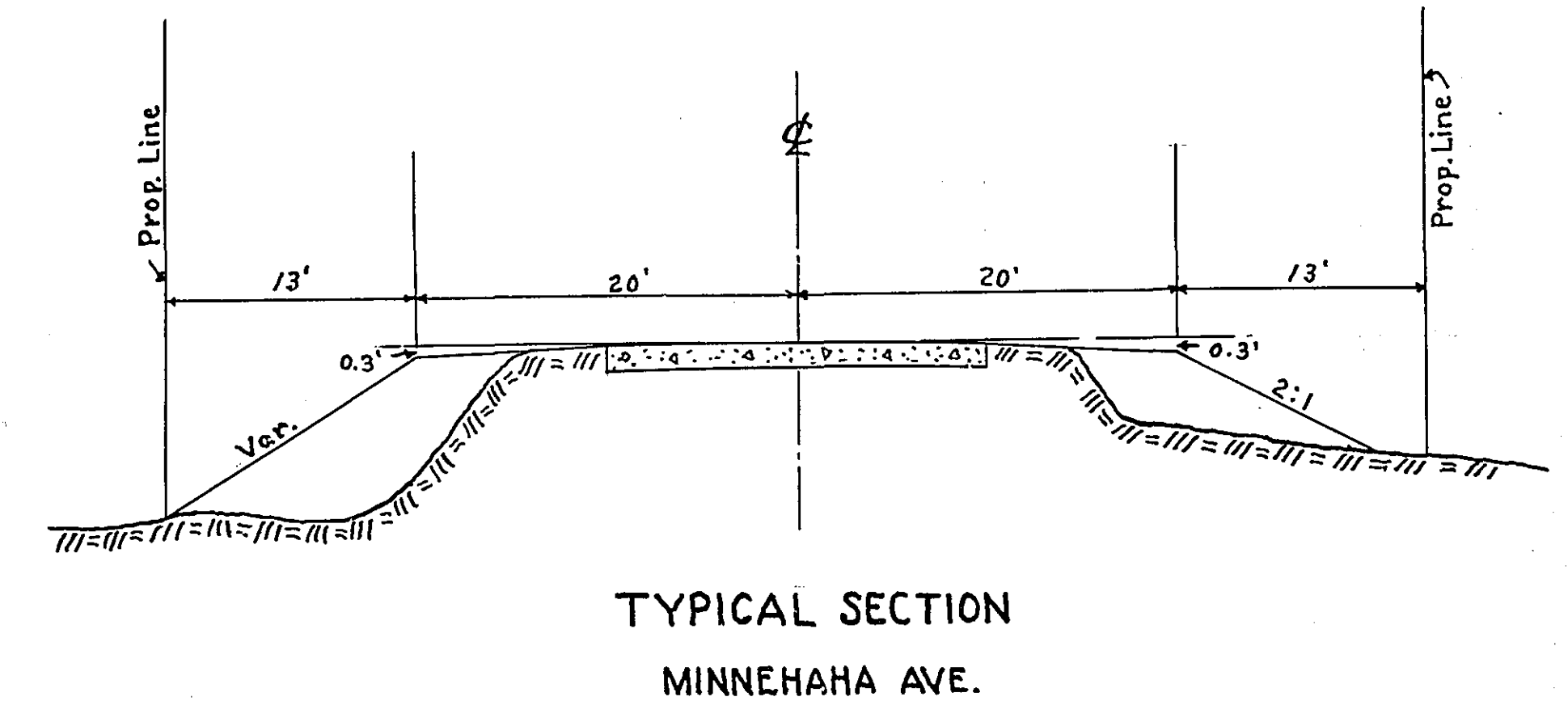
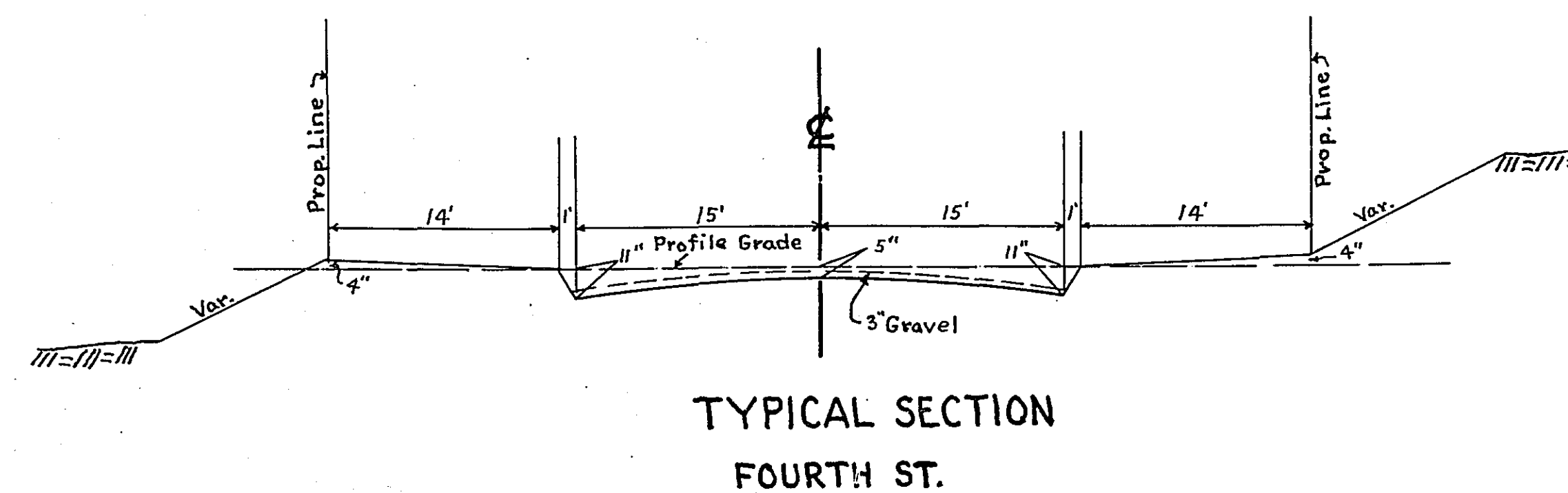
PLATE NO.	STANDARD DETAIL PLATES
3123	METAL APRON FOR C.M. PIPES
4000C	MANHOLE OR CATCH BASIN
4002B&4006B	MANHOLE OR CATCH BASIN
4101	RING CASTING FOR MANHOLE OR CATCH BASIN
4127A	CATCH BASIN FRAME CASTING
4142 A	BEEHIVE GRATE CASTING FOR CATCH BASIN
4149 A	GRATE CASTING FOR CATCH BASIN
4161	CURB BOX CASTING FOR CATCH BASIN
4180C	MANHOLE STEP CASTING
4200	REINFORCED CONCRETE SEWER PIPE WITH STEEL FABRIC REINF.
7002A	INTEGRANT CURB V-6
7111 A	INSTALLATION OF CATCH BASIN CASTINGS
8000A-8001	STANDARD BARRICADES AND STANDARD SECONDARY BARRICADES
8003 TO 8008A	SIGNS, FENCE, AND PLACEMENTS
9000	APPROACHES AND ENTRANCES
9102 A	SODDING AT PIPE CULVERT ENDS

THE ABOVE STANDARD DETAIL PLATES, APPROVED BY THE BUREAU OF PUBLIC ROADS SHALL APPLY ON THESE PROJECTS.

RECONSTRUCT MANHOLES								
STA. TO STA.	LOC.	IN PLACE	RECONSTRUCT			REMARKS		
			TYPE	CONSTR. DESIGN	EXCAV. CU. YD.			
23+31	6	M.H.	M.H.	—	—	Adjust Ring		
29+88	66.5' Lt.	M.H.	M.H.	—	3.6	2.5	965.3	Adjust Ring
39+83	5' Lt.	M.H.	M.H.	—	—	—	9856	Adjust Ring

MISCELLANEOUS				
STATION	LOCATION	IN PLACE	REMARKS	MANHOLES & CATCH BASIN STRUCTURES
19+71	19.5' Lt.	C.B.	REMOVE	1
26+95	21' Lt.	C.B.	"	1
39+34	20' Rt.	C.B.	"	1
40+31	21' Rt.	C.B.	"	1

PORTABLE CULVERTS				
STATION	LOCATION	IN PLACE	REMARKS	REMOVE PORTABLE CULVERTS LIN. FT.
21+24	ENT. RT.	12" C.M.	NO CULV. REQD.	24
21+25	ENT. LT.	15" C.M.	" " " "	20
22+66	6	24" S.C.P.	To 0+50 Lt.	48
24+85	ENT. LT.	12" C.M.	NO CULV. REQD.	24
26+54	RD. LT.	12" C.M.	" " " "	48
29+88	RD. LT.	12" C.M.	" " " "	42
34+81	ENT. LT.	12" C.M.	" " " "	40
37+02	6	24" S.C.P.	To 0+50 Lt.	36
37+19	ENT. RT.	15" C.M.	NO CULV. REQD.	26
39+83	ENT. RT.	15" C.M.	" " " "	61
				369



OFFICE OF
RAMSEY COUNTY ENGINEER
HARRY S. BRONSON

SKETCH SHOWING
LAND TO BE CONDEMNED FOR
EAST AVENUE - PROJECT 54-38

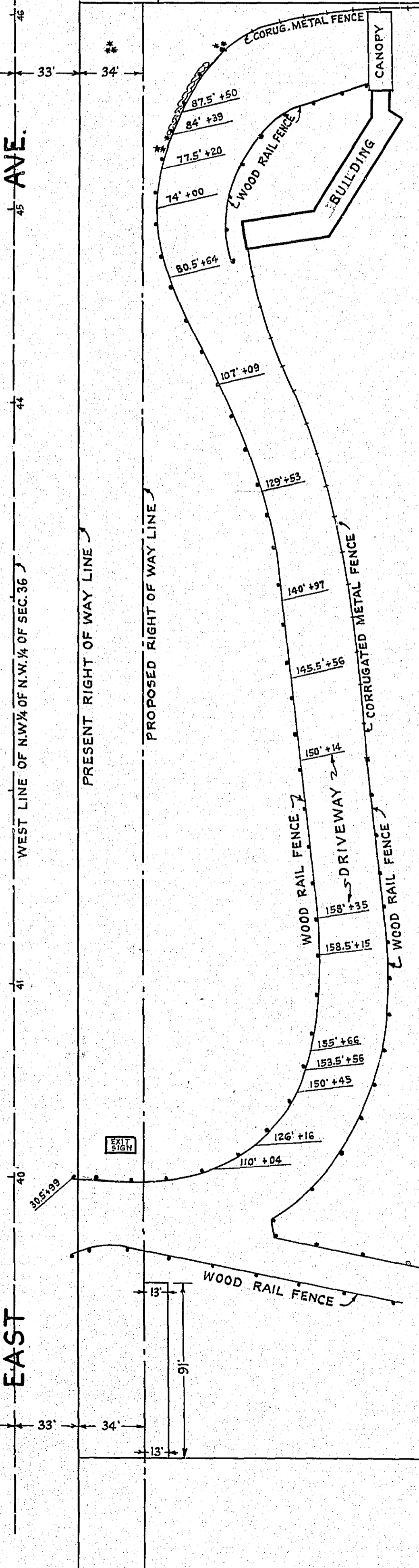
MARCH 1954

SCALE 1" = 50 FT.





STILLWATER RD.

MINNEHAHA AVE. NORTH LINE OF N.W. 1/4 OF N.W. 1/4 OF SEC. 36



MINNESOTA ENTERTAINMENT ENTERPRISES, INC.

LEGEND

-  DENOTES ADDITIONAL RIGHT OF WAY
-  " SLOPE EASEMENT

SOUTH LINE OF NORTH 785 FEET OF N.W. 1/4 OF N.W. 1/4 OF SEC. 36, T29N-R.22W.

Sheet 44
6782