

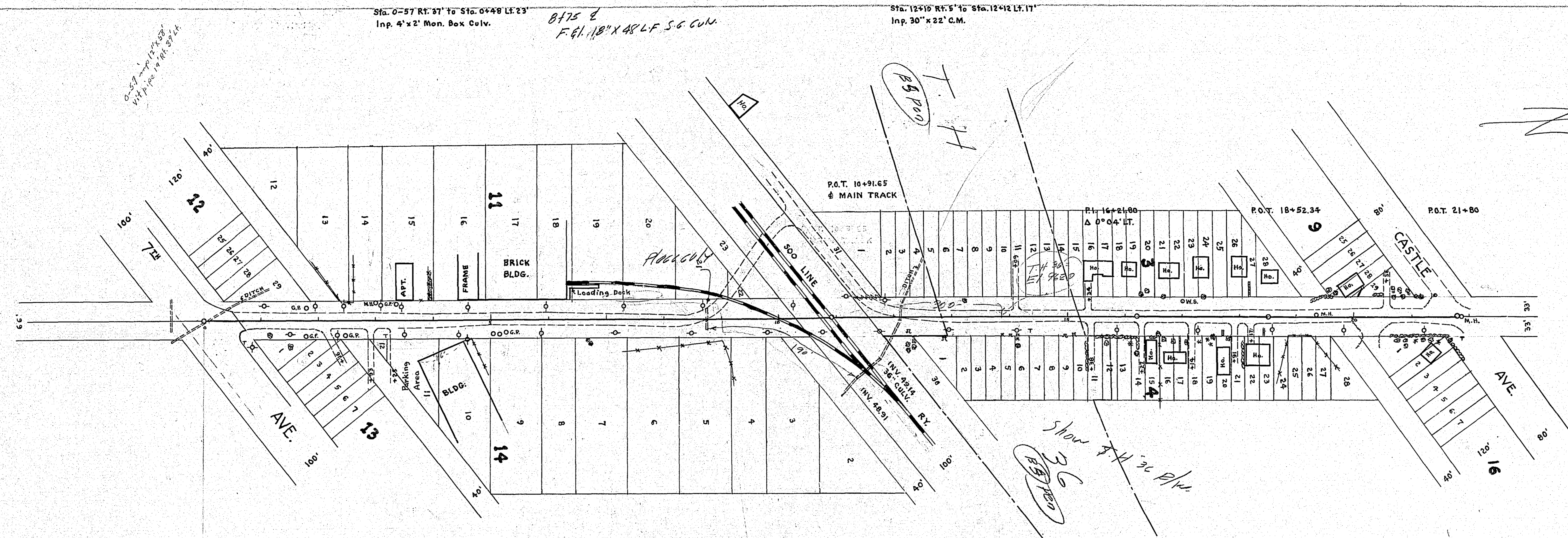
DATE	
BY	
SUPERVISED	
NOTED	
NO.	

DATE	
BY	
SUPERVISED	
NOTED	
NO.	

Sta. 0+57 Rt. 31' to Sta. 0+48 Lt. 23'
Inp. 4'x2' Mon. Box Culv.

Sta. 12+10 Rt. 5' to Sta. 12+12 Lt. 17'
Inp. 30'x22' C.M.

875 2
F. 61.18" X 48 L.F. S.G. CULV.



The M.H.D. is going to grade this crossing. Hold on do not complete plans until they are done grading. Grading will be done 10/53 or possibly 54 K.A.

Show 30' Blk

