

**CONVENTIONAL SIGNS**

STATE LINE	TIMBER	
COUNTY LINE	BRUSH	
TOWNSHIP OR RANGE LINE	BARREN	
SECTION LINE	BARREN	
QUARTER LINE	BARREN	
SIXTEENTH LINE	BARREN	
RIGHT OF WAY LINE	BARREN	
PROPERTY LINE (Except Land Lines)	BARREN	
VACATED PLATTED PROPERTY	BARREN	
CORPORATE OR CITY LIMITS	BARREN	
TRUNK HIGHWAY CENTER LINE	BARREN	
RETAINING WALL	BARREN	
STEAM RAILROAD	BARREN	
ELECTRIC RAILROAD	BARREN	
RAILROAD RIGHT-OF-WAY LINE	BARREN	
CREEK	BARREN	
RAPIDS OR WATERFALL	BARREN	
DRY RIVER	BARREN	
DRAINAGE DITCH	BARREN	
HIGH TENSION LINE	BARREN	
POWER POLE LINE	BARREN	
TELEPHONE OR TELEGRAPH LINE	BARREN	
CULVERT	BARREN	
GUARD RAIL	BARREN	
WIRE FENCE	BARREN	
RAILROAD SNOW FENCE	BARREN	
BOARD OR HIGHWAY SNOW FENCE	BARREN	
STONE WALL OR FENCE	BARREN	
HEDGE	BARREN	
WATER PILE	BARREN	
SEWER PIPE	BARREN	
DRAIN	BARREN	
CLAY PIT	BARREN	
ROCK QUARRY	BARREN	
SPRINGS	BARREN	
MARSH	BARREN	
TRUNK HIGHWAY R/W	BARREN	
RAILROAD R/W	BARREN	
PRESENT ROAD R/W	BARREN	

**OFFICE OF COUNTY SURVEYOR**  
**RAMSEY COUNTY**  
**BITUMINOUS SURFACING**  
**CENTERVILLE ROAD**

From Little Canada Road To Edgerton Street

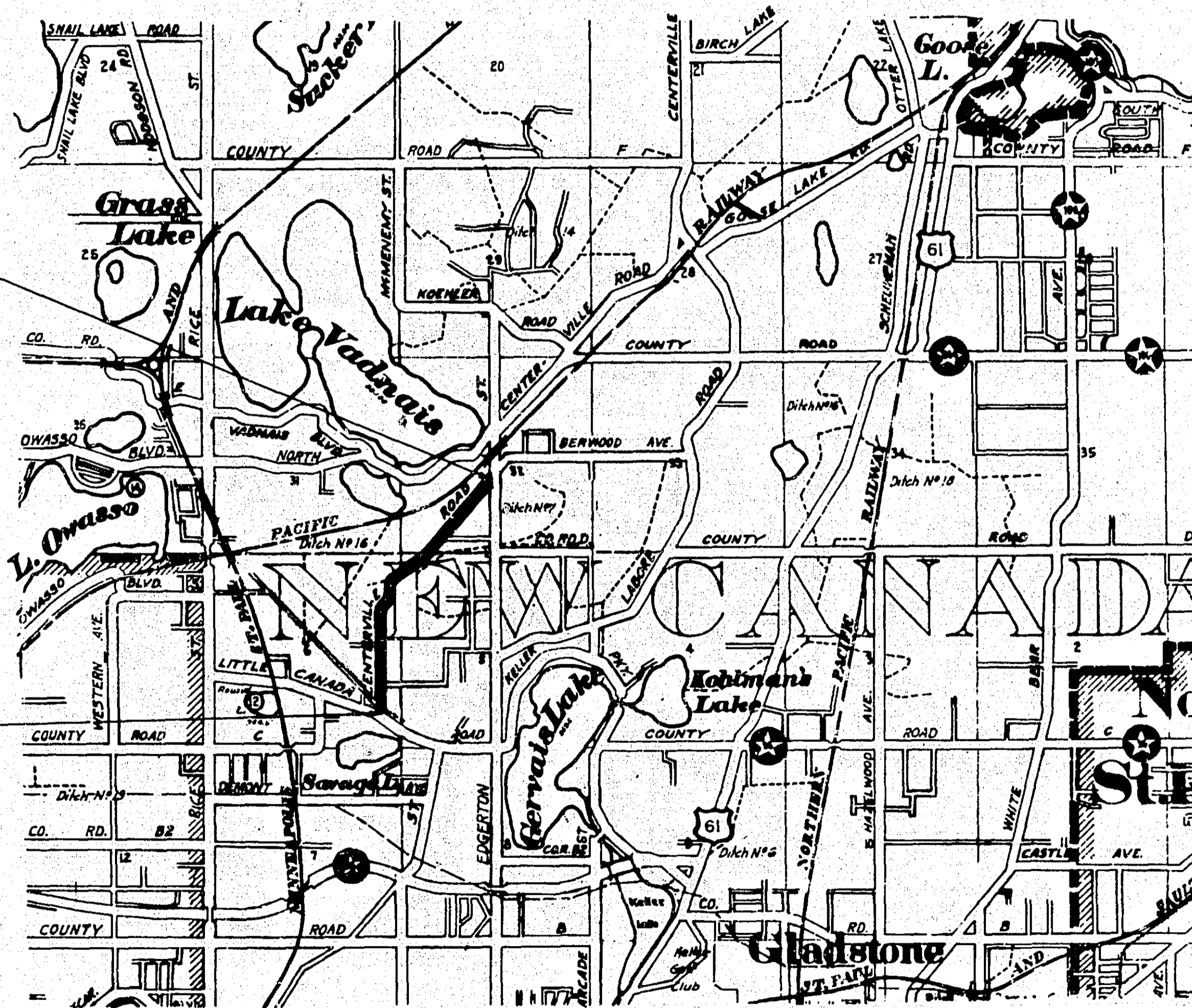
GROSS LENGTH 8440 FEET 1.60 MILES  
 LENGTH OF EXCEPTIONS 0 FEET 0 MILES  
 NET LENGTH 8440 FEET 1.60 MILES

PLAN, 1 inch = 100 Feet  
 PROFILE, Horz. 1 inch = 100 Feet, Vert. 1 inch = 10 Feet  
 WORKING PLANS, Horz. 1 inch = 100 Feet, Vert. 1 inch = 10 Feet  
 Cross-Sections, 1 inch = 10 Feet

LAYOUT  
 SCALE, 1 inch = 2640 Feet

END OF PROJ.  
 STA. 84+50

BEG. OF PROJ.  
 STA. 0+00



NOTE: SECTION NUMBERS READ FROM THE SOUTH

APPROVED \_\_\_\_\_ 1953  
 COUNTY ENGINEER

APPROVED \_\_\_\_\_ 1953  
 CHAIRMAN RAMSEY COUNTY BOARD

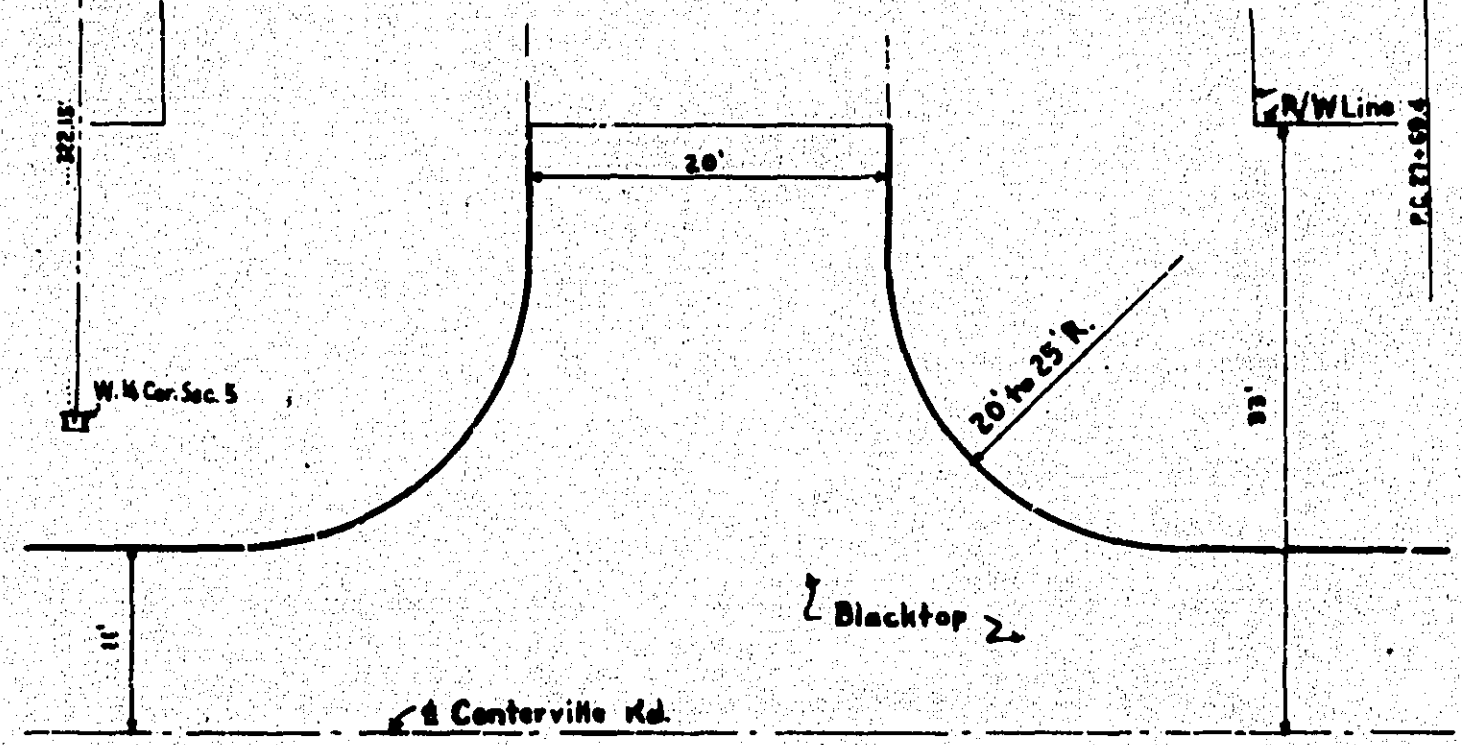
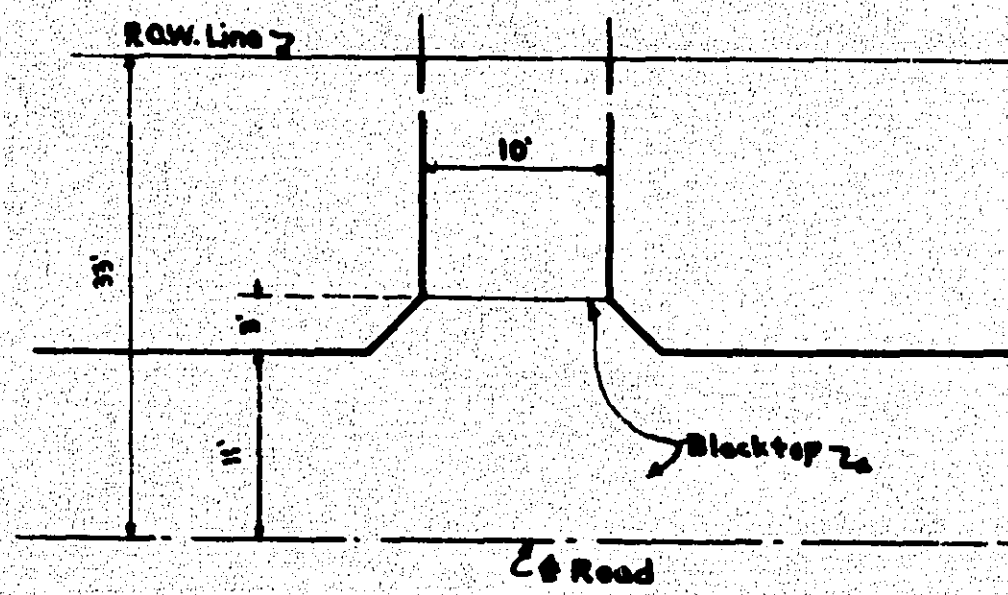
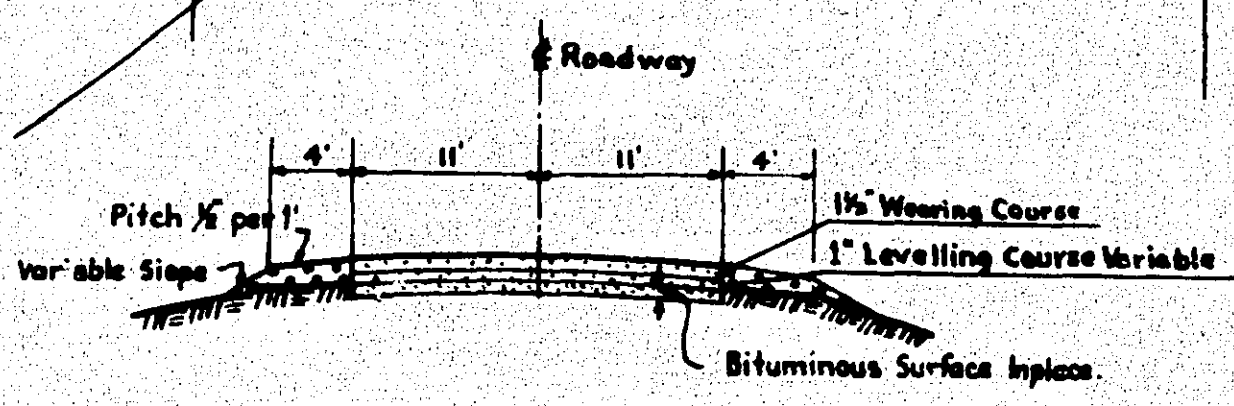
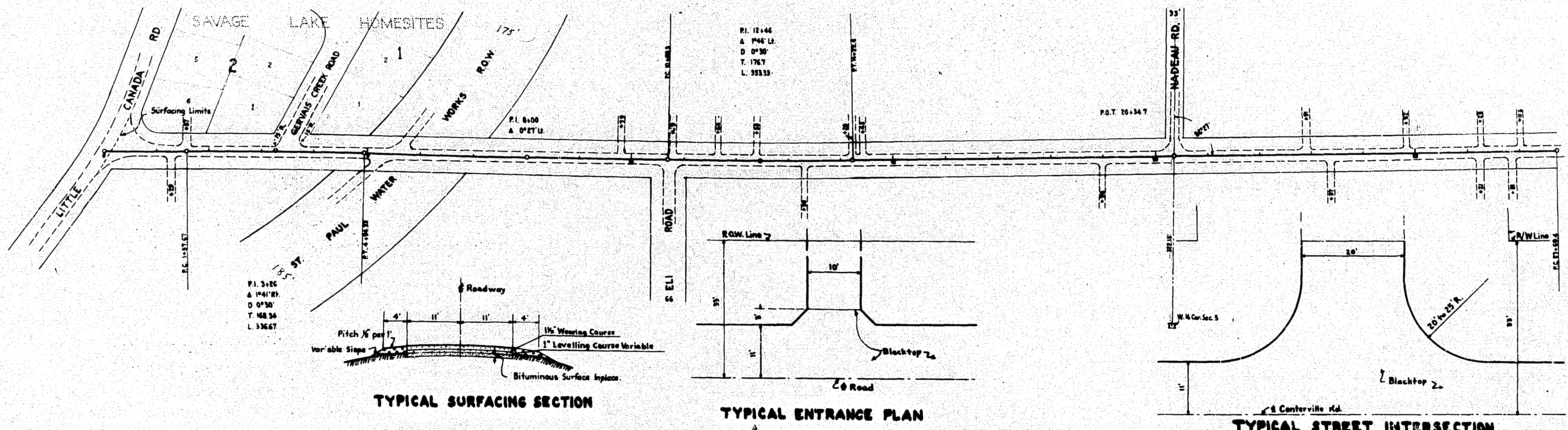
RECOMMENDED FOR APPROVAL \_\_\_\_\_  
 DISTRICT ENGINEER

RECOMMENDED FOR APPROVAL \_\_\_\_\_  
 ENGINEER OF COUNTY DIVISION

APPROVED \_\_\_\_\_ 1953  
 ENGINEER OF PLANS & SURVEYS

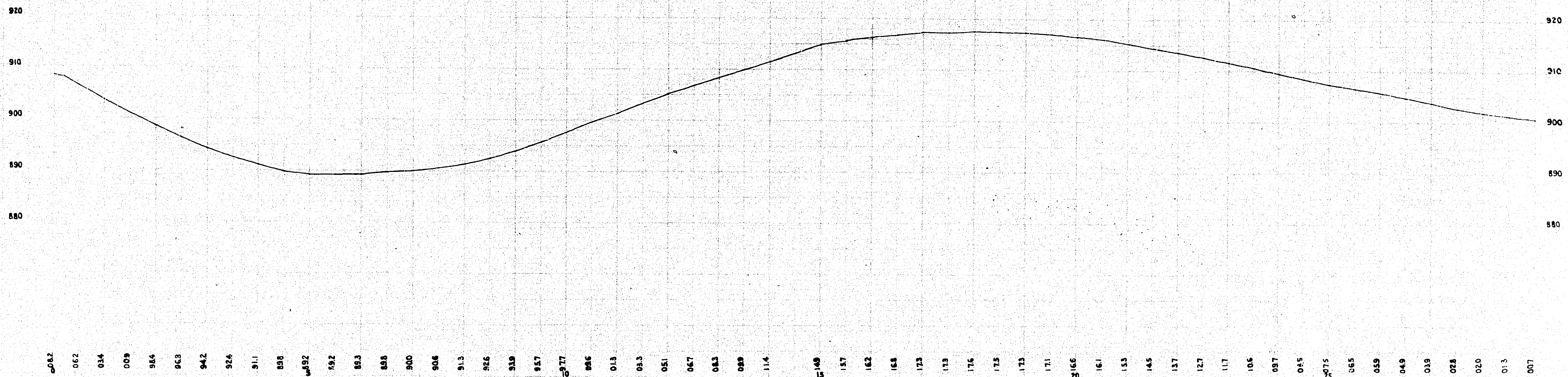
I HEREBY CERTIFY THAT THIS PLAN WAS PREPARED BY ME OR UNDER MY DIRECT SUPERVISION AND THAT I AM A DULY REGISTERED PROFESSIONAL ENGINEER UNDER THE LAWS OF THE STATE OF MINNESOTA.

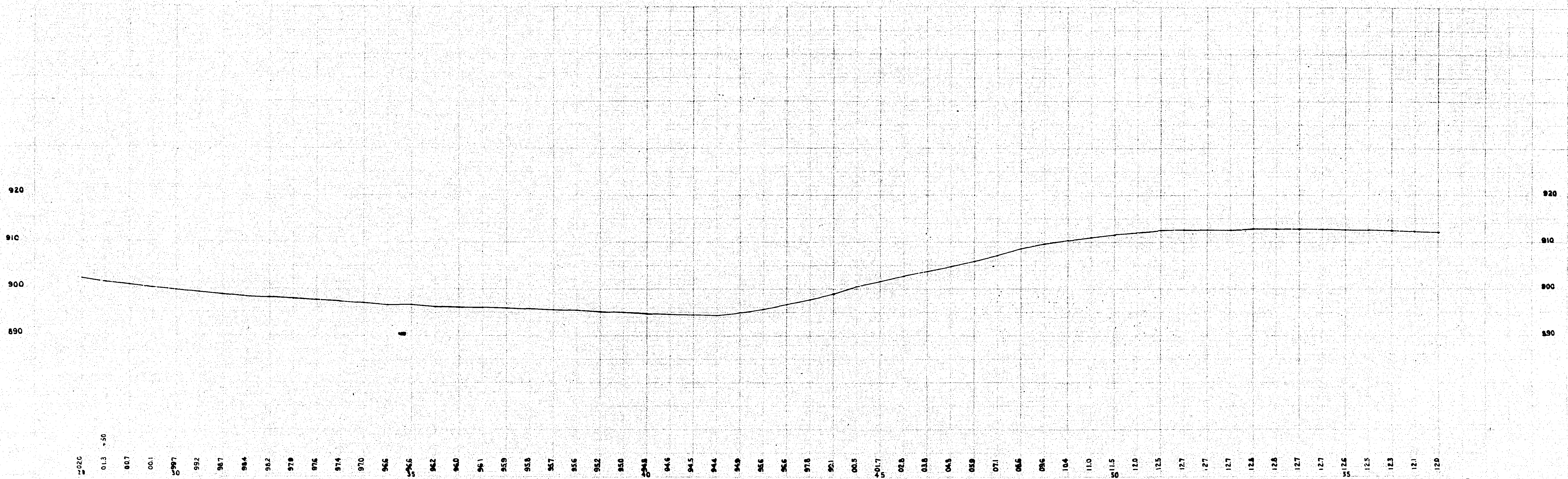
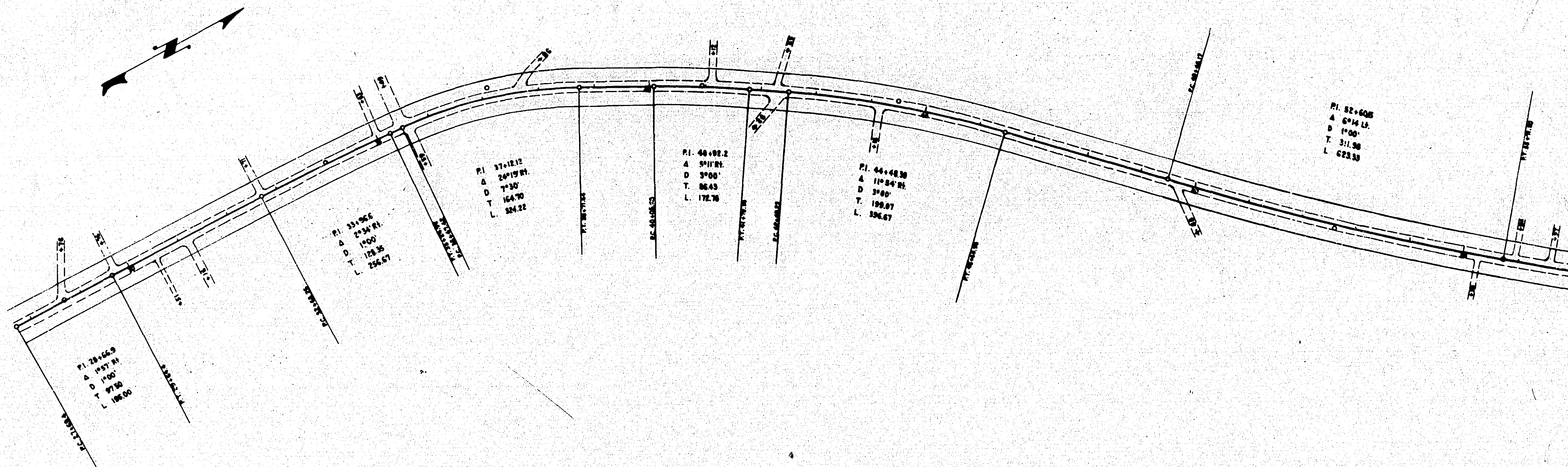
DATE \_\_\_\_\_ REG. NO. \_\_\_\_\_



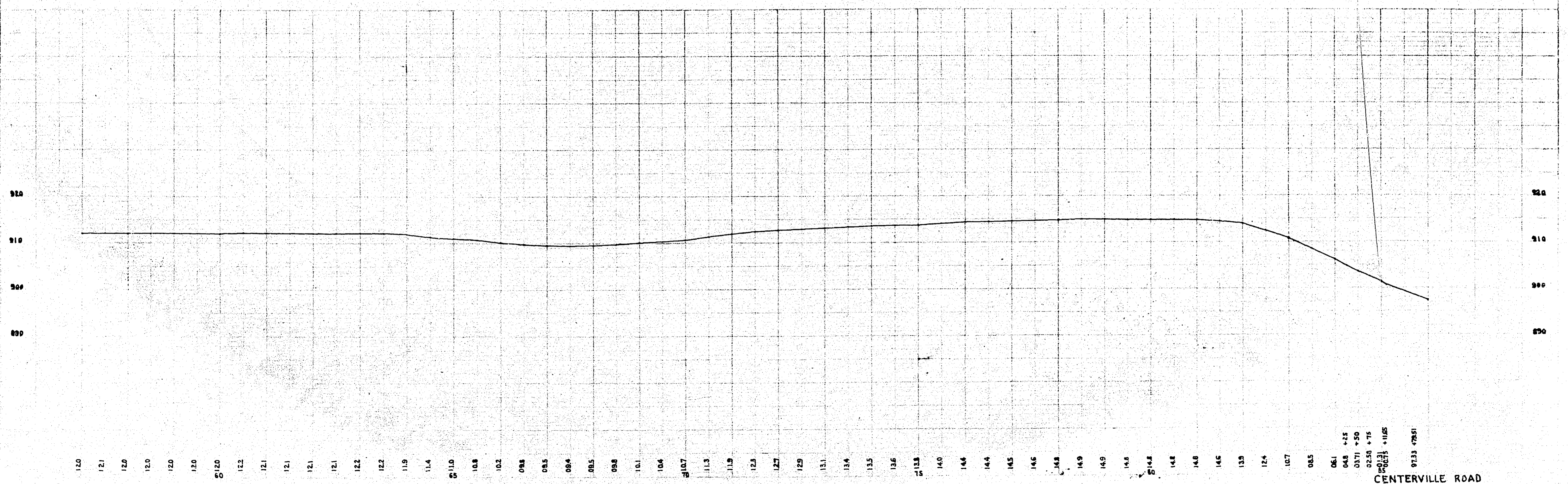
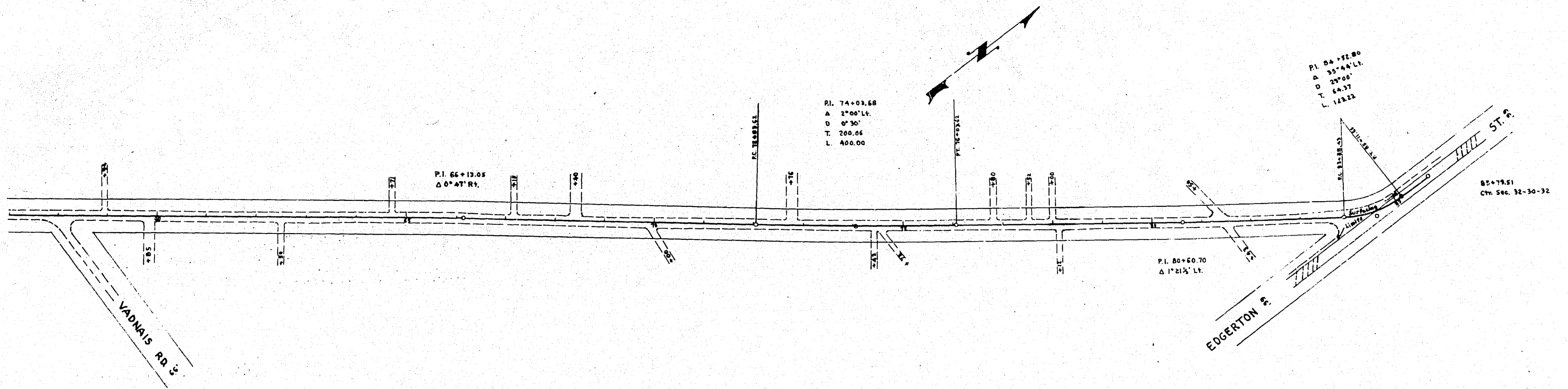
**PLANNED QUANTITIES**  
 Bituminous Surfacing - 100 Lbs. per S.Y. 1" Thick  
 Shoulder Material Inplace - 44 Cu. Yds. per Station

**ESTIMATED QUANTITIES**  
 Plant Mix Bituminous Material for Surfacing & Levelling Course Inplace - Tons 2834  
 Shoulder Material Inplace - C.Y. 3376





0+00 0.13 +50 00.7 00.1 0997 992 987 984 982 979 976 974 970 965 965 962 960 961 959 958 957 956 952 950 948 946 945 944 943 942 941 940 938 936 935 931 90.5 901.7 90 92.8 93.8 94.8 95.9 97.1 98.5 99.6 104 110 111.5 120 125 127 127 127 127 126 126 127 127 125 125 123 121 120



120 121 122 123 124 125 126 127 128 129 130 131 132 133 134 135 136 137 138 139 140 141 142 143 144 145 146 147 148 149 150 151 152 153 154 155 156 157 158 159 160 161 162 163 164 165 166 167 168 169 170 171 172 173 174 175 176 177 178 179 180 181 182 183 184 185 186 187 188 189 190 191 192 193 194 195 196 197 198 199 200 201 202 203 204 205 206 207 208 209 210 211 212 213 214 215 216 217 218 219 220 221 222 223 224 225 226 227 228 229 230 231 232 233 234 235 236 237 238 239 240 241 242 243 244 245 246 247 248 249 250 251 252 253 254 255 256 257 258 259 260 261 262 263 264 265 266 267 268 269 270 271 272 273 274 275 276 277 278 279 280 281 282 283 284 285 286 287 288 289 290 291 292 293 294 295 296 297 298 299 300

PLAN	REVISED	BY	DATE
NOTE BOOK	ADDED		
NO.	PT. OF WAY CHECKED		

PROFILE	REVISED	BY	DATE
NOTE BOOK	ADDED		
NO.	STRUCTURE NOTING CHECKED		

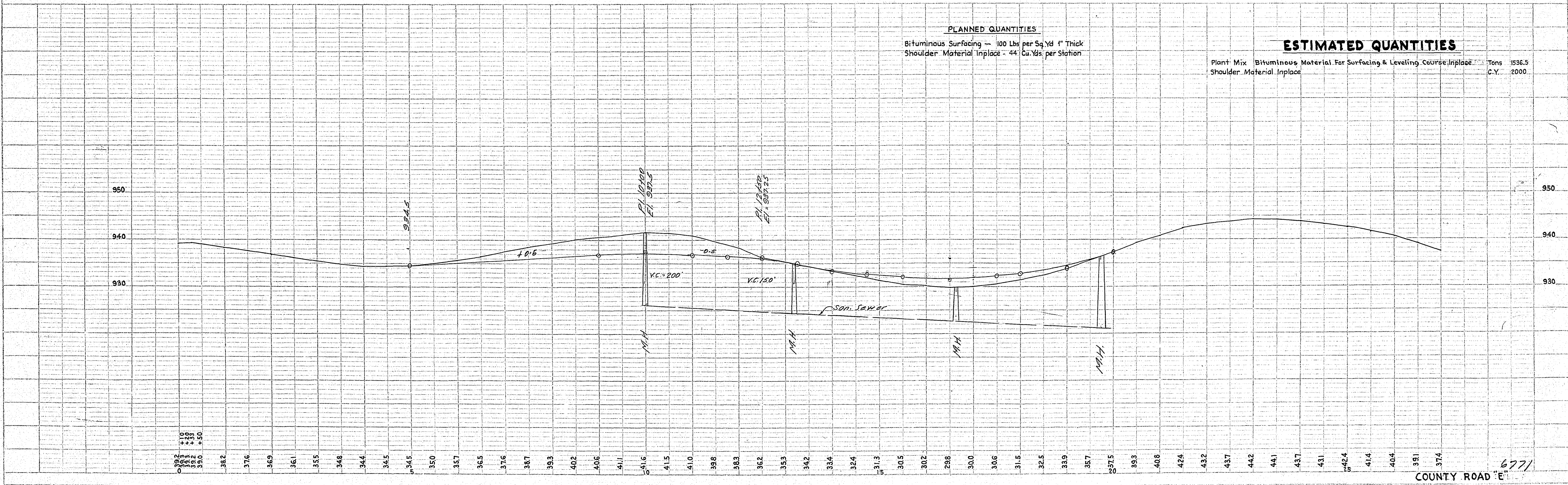
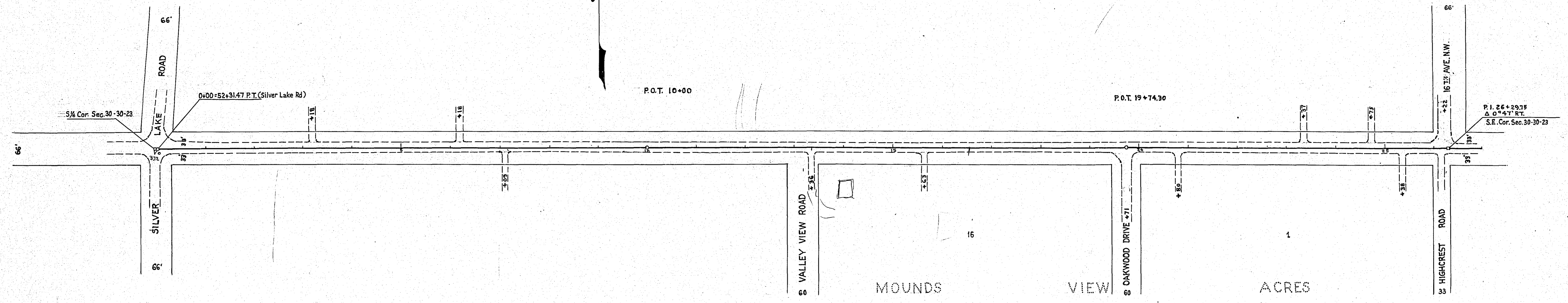


PLATE 1 - PLAN-PROFILE C. & G. S. STANDARD  
 KENNEDY & BISHOP, INC. NEW YORK

RAMSEY Co. 53-73

S.A.P. 62-548-01  
 SHEET 2 OF 3 SHEETS

6771

**CONVENTIONAL SIGNS**

STATE LINE		TIMBER	
COUNTY LINE		BRUSH	
TOWNSHIP OR RANGE LINE		ORCHARD	
SECTION LINE		ROCK LEDGE	
QUARTER LINE		SAND	
SIXTEENTH LINE		EDGE OF CUT	
RIGHT-OF-WAY LINE		TOE OF EMBANKMENT	
PROPERTY LINE (Except Land Lines)		CATCH BASIN	
VACATED PLATTED PROPERTY		MANHOLE	
CORPORATE OR CITY LIMITS		FIRE HYDRANT	
TRUNK HIGHWAY CENTER LINE		ARC LAMP	
RETAINING WALL		OTHER LAMPS (State Kind)	
STEAM RAILROAD		RAILROAD CROSSING SIGN	
ELECTRIC RAILROAD		RAILROAD CROSSING BELL	
RAILROAD RIGHT-OF-WAY LINE		ELECTRIC WARNING SIGN	
CREEK		CROSSING GATE	
RAPIDS OR WATERFALL		CATTLE GUARD	
DRY RUN		OVERHEAD (Highway Over)	
DRAINAGE DITCH		UNDERPASS (Highway Under)	
HIGH TENSION LINE		ABUTMENT, WALL & PIER	
POWER POLE LINE		BRIDGE	
TELEPHONE OR TELEGRAPH LINE		BUILDING (One Story Frame)	
CULVERT		F-FRAME C-CONCRETE	
DROP INLET		S-STONE T-TILE	
GUARD RAIL		B-BRICK BT-STUCCO	
WIRE FENCE		IRON PIPE	
RAILROAD SHOW FENCE		STONE MONUMENT	
BOARD OR HIGHWAY SHOW FENCE		WOOD STAKE OR HUB	
STONE WALL OR FENCE		MEANDER CORNER	
HEDGE			
WATER PIPE			
SEWER PIPE			
DRAIN TILE			
GRAVEL PIT			
SAND PIT			
CLAY PIT			
ROCK QUARRY			
SPRINGS			
MARSH			
TRUNK HIGHWAY R/W			
RAILROAD R/W			
PRESENT ROAD R/W			

**OFFICE OF COUNTY SURVEYOR**

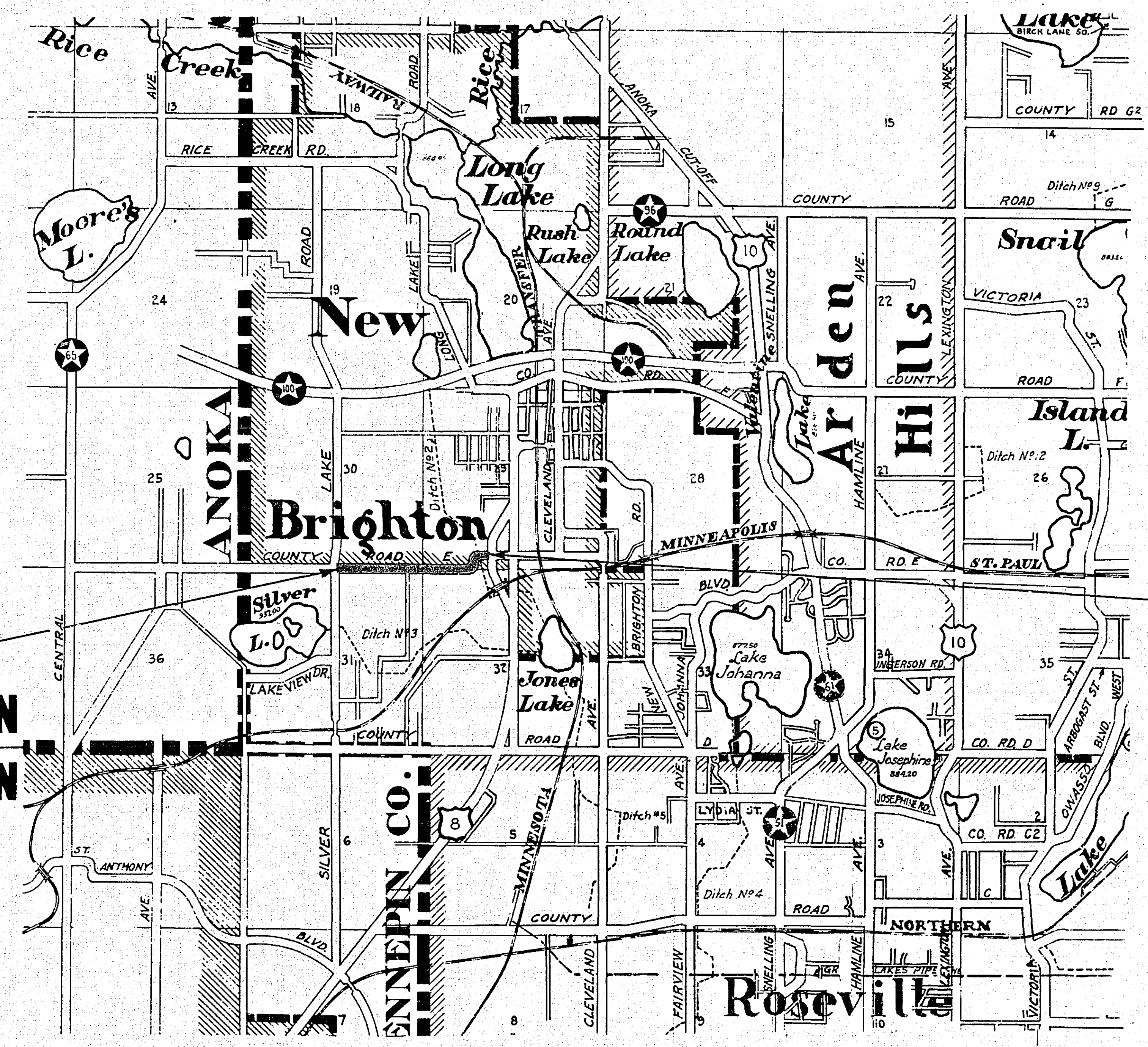
**RAMSEY COUNTY  
BITUMINOUS SURFACING  
COUNTY ROAD "E"**

From Silver Lake Road To Trunk Highway No. 8

GROSS LENGTH 5134 FEET 0.97 MILES  
 LENGTH OF EXCEPTIONS 0 FEET 0 MILES  
 NET LENGTH 5134 FEET 0.97 MILES

PLAN, 1 Inch = 100 Feet  
 PROFILE, Horz. 1 Inch = 100 Feet. Vert. 1 Inch = 10 Feet  
 WORKING PLANS  
 Horz. 1 Inch = 100 Feet  
 Vert. 1 Inch = 10 Feet  
 Cross-Sections, 1 Inch = 10 Feet

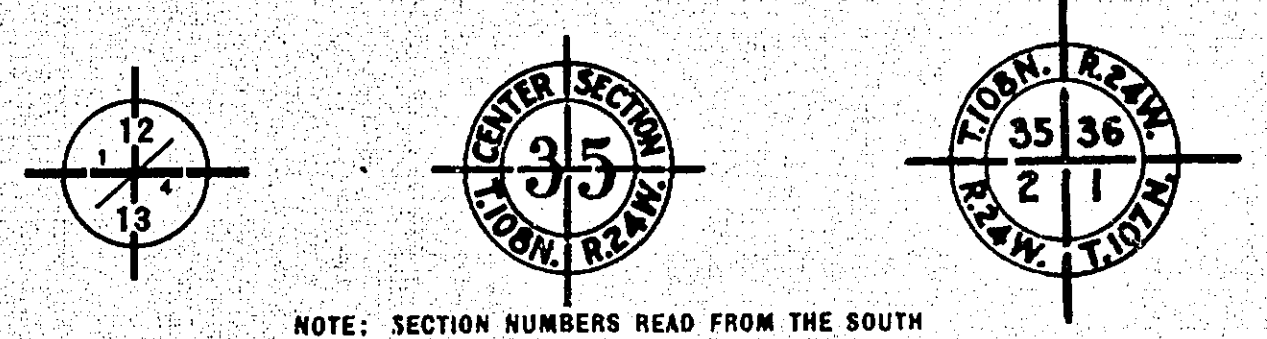
LAYOUT  
 SCALE, 1 Inch = 2640 Feet



BEG. OF PROJ.  
 STA. 0+00

END OF PROJECT  
 STA. 51+33.85

T30N  
 T29N



APPROVED *Barry S. Brown* 1953  
 COUNTY ENGINEER

APPROVED *John A. ...* 1953  
 CHAIRMAN RAMSEY COUNTY BOARD

RECOMMENDED FOR APPROVAL *B. J. ...*  
 DISTRICT ENGINEER

RECOMMENDED FOR APPROVAL *S. M. ...* 8/1/53  
 ENGINEER OF COUNTY DIVISION

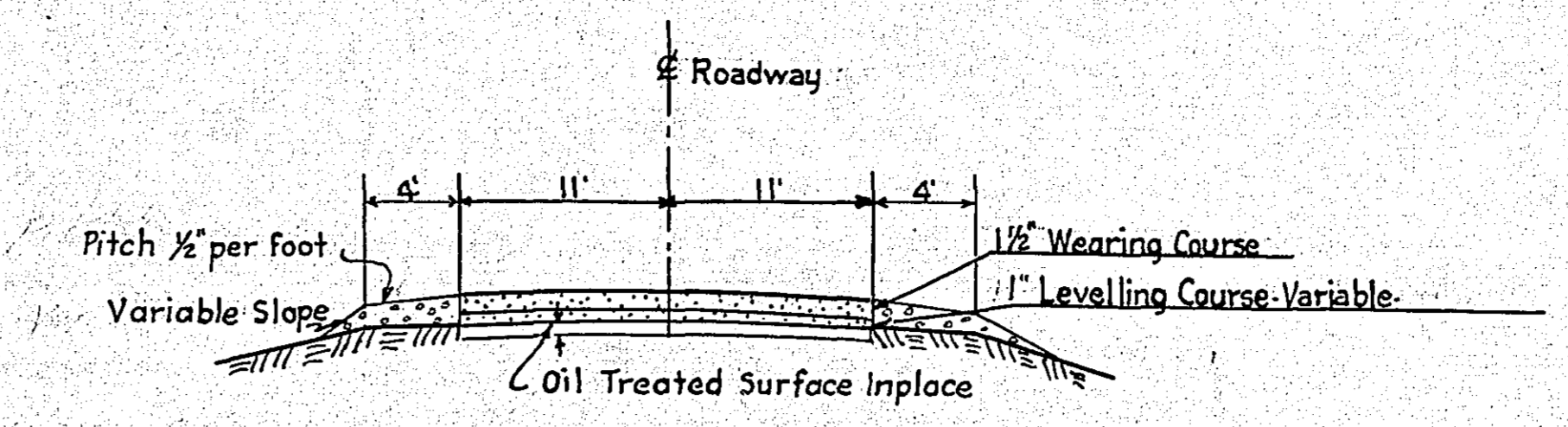
APPROVED *S. M. ...* 1953  
 ENGINEER OF PLANS & SURVEYS

I HEREBY CERTIFY THAT THIS PLAN WAS PREPARED BY ME OR UNDER MY DIRECT SUPERVISION AND THAT I AM A DULY REGISTERED PROFESSIONAL ENGINEER UNDER THE LAWS OF THE STATE OF MINNESOTA.  
*Barry S. Brown*  
 DATE: 8/1/53 REG. NO. 895

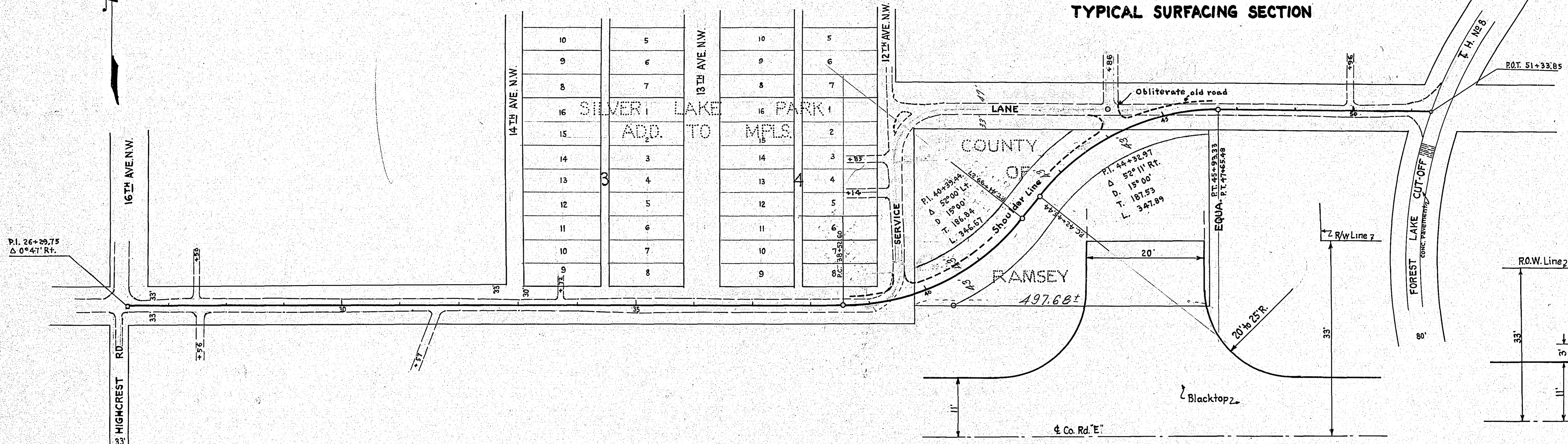
PLAN	SURVEYED	DATE
	PLOTTED	
	ALIGNED	
	GRADED	
	NOTED	
	NO.	

PROFILE	SURVEYED	DATE
	PLOTTED	
	ALIGNED	
	GRADED	
	NOTED	
	NO.	

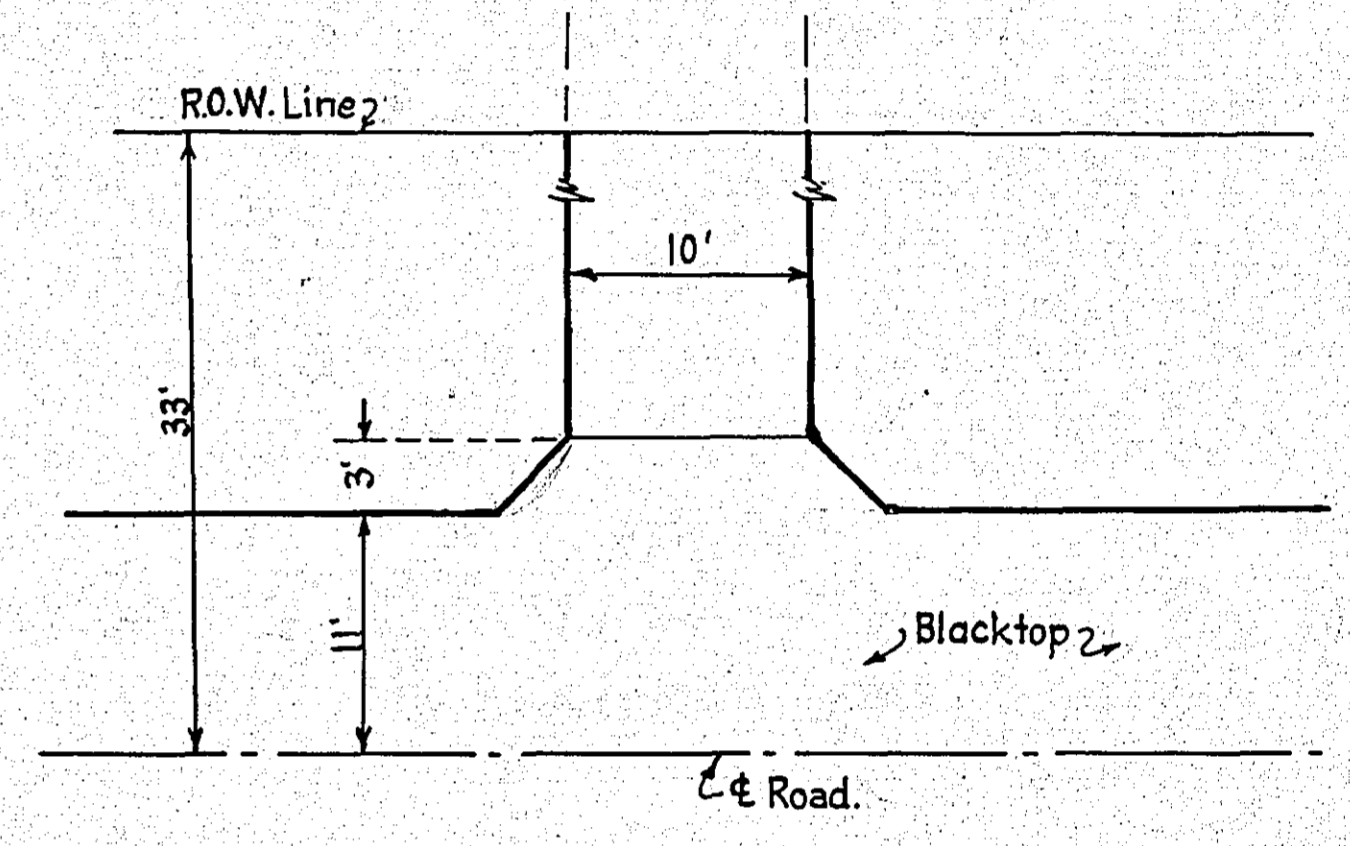
PLAN	SURVEYED	DATE
	PLOTTED	
	ALIGNED	
	GRADED	
	NOTED	
	NO.	



TYPICAL SURFACING SECTION

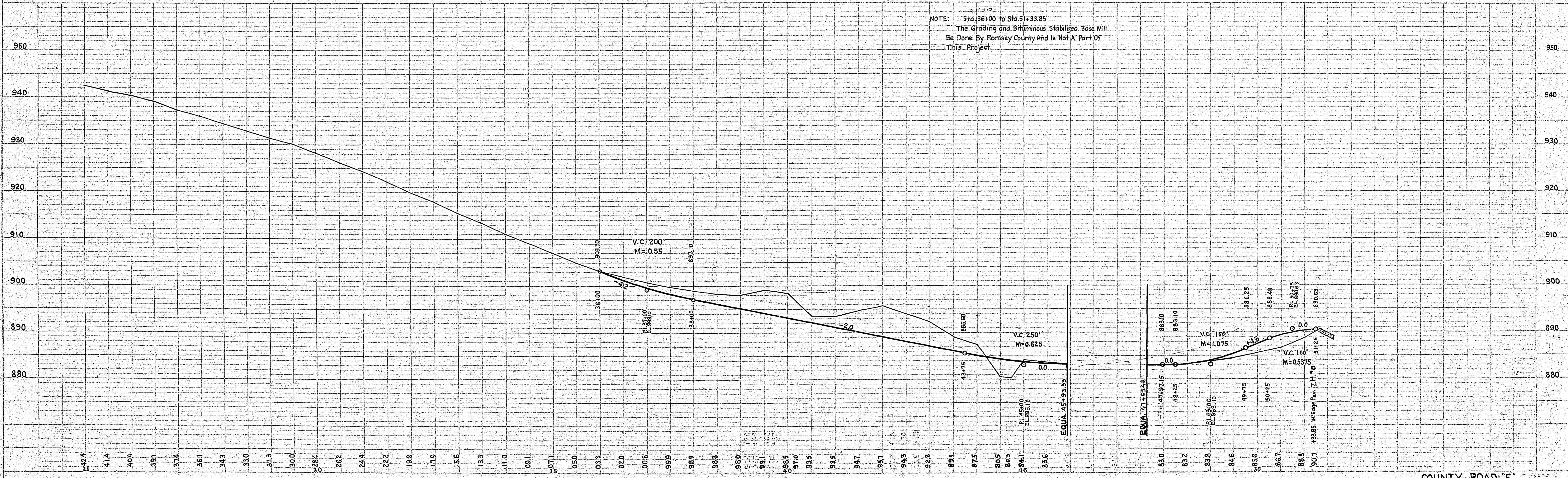


TYPICAL STREET INTERSECTION



TYPICAL ENTRANCE PLAN

NOTE: - Sta. 36+00 to Sta. 51+33.85  
The Grading and Bituminous Stabilized Base Will Be Done By Ramsey County And Is Not A Part Of This Project.



**CONVENTIONAL SIGNS**

STATE LINE	-----	TIMBER	
COUNTY LINE	-----	BRUSH	
TOWNSHIP OR RANGE LINE	-----	ORCHARD	
SECTION LINE	-----	ROCK LEDGE	
QUARTER LINE	-----	SAND	
SIXTEENTH LINE	-----	EDGE OF CUT	
RIGHT-OF-WAY LINE	-----	TOE OF EMBANKMENT	
PROPERTY LINE (Except Land Lines)	-----	CATCH BASIN	
VACATED PLATTED PROPERTY	-----	MANHOLE	
CORPORATE OR CITY LIMITS	-----	FIRE HYDRANT	
TRUNK HIGHWAY CENTER LINE	-----	ARC LAMP	
RETAINING WALL	-----	OTHER LAMPS (State Kind)	
STEAM RAILROAD	-----	RAILROAD CROSSING SIGN	
ELECTRIC RAILROAD	-----	RAILROAD CROSSING BELL	
RAILROAD RIGHT-OF-WAY LINE	-----	ELECTRIC WARNING SIGN	
CREEK	-----	CROSSING GATE	
RAPIDS OR WATERFALL	-----	CATTLE GUARD	
DRY RUN	-----	OVERHEAD (Highway Over)	
DRAINAGE DITCH	-----	UNDERPASS (Highway Under)	
HIGH TENSION LINE	-----	ABUTMENT, WALL & PIER	
POWER POLE LINE	-----	BRIDGE	
TELEPHONE OR TELEGRAPH LINE	-----	BUILDING (One Story Frame)	
CULVERT	-----	F-FRAME C-CONCRETE	
DROP INLET	-----	S-STONE T-TILE	
GUARD RAIL	-----	B-BRICK ST-STUCCO	
WIRE FENCE	-----	IRON PIPE	
RAILROAD SNOW FENCE	-----	STONE MONUMENT	
BOARD OR HIGHWAY SNOW FENCE	-----	WOOD STAKE OR HUB	
STONE WALL OR FENCE	-----	MEANDER CORNER	
HEDGE	-----		
WATER PIPE	-----		
SEWER PIPE	-----		
DRAIN TILE	-----		
GRAVEL PIT	-----		
SAND PIT	-----		
CLAY PIT	-----		
ROCK QUARRY	-----		
SPRINGS	-----		
MARSH	-----		
TRUNK HIGHWAY R/W	-----		
RAILROAD R/W	-----		
PRESENT ROAD R/W	-----		

**OFFICE OF COUNTY SURVEYOR**

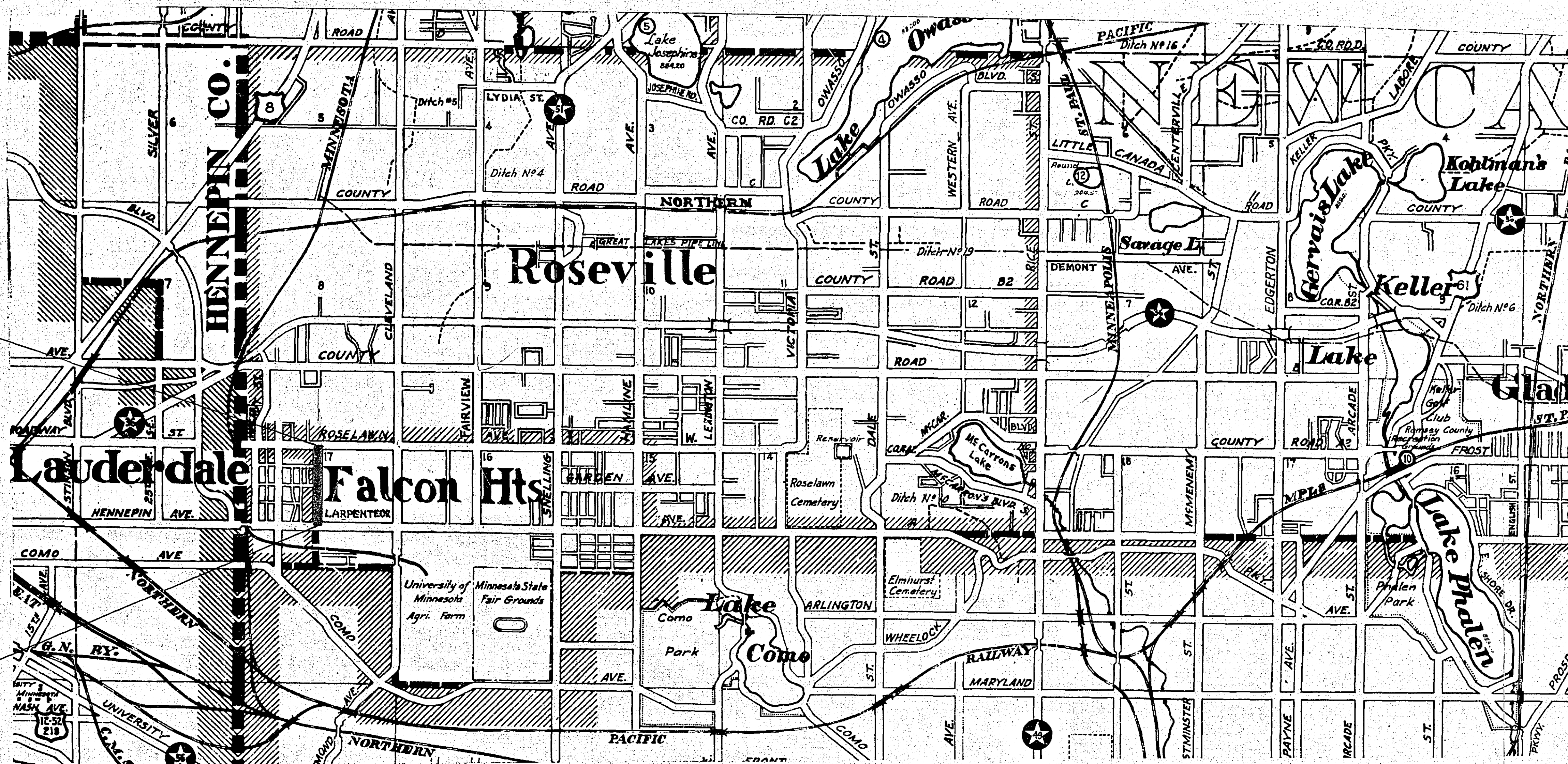
**RAMSEY COUNTY  
BITUMINOUS SURFACING  
FULHAM STREET**

From Larpenteur Ave. To Roselawn Ave.

GROSS LENGTH 2615 FEET 0.50 MILES  
LENGTH OF EXCEPTIONS FEET MILES  
NET LENGTH 2615 FEET 0.50 MILES

PLAN, 1 Inch = 100 Feet  
PROFILE, Horz. 1 Inch = 100 Feet, Vert. 1 Inch = 10 Feet  
SCALES WORKING PLANS { Horz. 1 Inch = 100 Feet  
Vert. 1 Inch = 10 Feet  
Cross-Sections, 1 Inch = Feet

LAYOUT  
SCALE, 1 Inch = 2640 Feet



END OF PROJ.  
STA. 26+25

BEG. PROJ.  
STA. 0+10

APPROVED *Harry J. Brown* 1952  
COUNTY SURVEYOR

APPROVED 7/21/52 *Tommy Schmitt*  
CHAIRMAN, RAMSEY COUNTY BOARD

RECOMMENDED FOR APPROVAL *E. G. McArthur*  
DISTRICT ENGINEER

RECOMMENDED FOR APPROVAL *R. M. Evans* 8/22/52  
ENGINEER OF COUNTY DIVISION

APPROVED 8/25/52 *F. F. Schmitt*  
ENGINEER OF PLANS & SURVEYS

I HEREBY CERTIFY THAT THIS PLAN WAS PREPARED BY ME OR UNDER MY DIRECT SUPERVISION AND THAT I AM A DULY REGISTERED PROFESSIONAL ENGINEER UNDER THE LAWS OF THE STATE OF MINNESOTA.  
*Harry J. Brown*  
DATE 8/25/52 REG. NO. 76



DATE  
BY  
SUPERVISOR  
CHECKED  
NO. 1  
NO. 2  
NO. 3  
NO. 4  
NO. 5  
NO. 6  
NO. 7  
NO. 8  
NO. 9  
NO. 10  
NO. 11  
NO. 12  
NO. 13  
NO. 14  
NO. 15  
NO. 16  
NO. 17  
NO. 18  
NO. 19  
NO. 20  
NO. 21  
NO. 22  
NO. 23  
NO. 24  
NO. 25  
NO. 26  
NO. 27  
NO. 28  
NO. 29  
NO. 30  
NO. 31  
NO. 32  
NO. 33  
NO. 34  
NO. 35  
NO. 36  
NO. 37  
NO. 38  
NO. 39  
NO. 40  
NO. 41  
NO. 42  
NO. 43  
NO. 44  
NO. 45  
NO. 46  
NO. 47  
NO. 48  
NO. 49  
NO. 50  
NO. 51  
NO. 52  
NO. 53  
NO. 54  
NO. 55  
NO. 56  
NO. 57  
NO. 58  
NO. 59  
NO. 60  
NO. 61  
NO. 62  
NO. 63  
NO. 64  
NO. 65  
NO. 66  
NO. 67  
NO. 68  
NO. 69  
NO. 70  
NO. 71  
NO. 72  
NO. 73  
NO. 74  
NO. 75  
NO. 76  
NO. 77  
NO. 78  
NO. 79  
NO. 80  
NO. 81  
NO. 82  
NO. 83  
NO. 84  
NO. 85  
NO. 86  
NO. 87  
NO. 88  
NO. 89  
NO. 90  
NO. 91  
NO. 92  
NO. 93  
NO. 94  
NO. 95  
NO. 96  
NO. 97  
NO. 98  
NO. 99  
NO. 100

DATE  
BY  
SUPERVISOR  
CHECKED  
NO. 1  
NO. 2  
NO. 3  
NO. 4  
NO. 5  
NO. 6  
NO. 7  
NO. 8  
NO. 9  
NO. 10  
NO. 11  
NO. 12  
NO. 13  
NO. 14  
NO. 15  
NO. 16  
NO. 17  
NO. 18  
NO. 19  
NO. 20  
NO. 21  
NO. 22  
NO. 23  
NO. 24  
NO. 25  
NO. 26  
NO. 27  
NO. 28  
NO. 29  
NO. 30  
NO. 31  
NO. 32  
NO. 33  
NO. 34  
NO. 35  
NO. 36  
NO. 37  
NO. 38  
NO. 39  
NO. 40  
NO. 41  
NO. 42  
NO. 43  
NO. 44  
NO. 45  
NO. 46  
NO. 47  
NO. 48  
NO. 49  
NO. 50  
NO. 51  
NO. 52  
NO. 53  
NO. 54  
NO. 55  
NO. 56  
NO. 57  
NO. 58  
NO. 59  
NO. 60  
NO. 61  
NO. 62  
NO. 63  
NO. 64  
NO. 65  
NO. 66  
NO. 67  
NO. 68  
NO. 69  
NO. 70  
NO. 71  
NO. 72  
NO. 73  
NO. 74  
NO. 75  
NO. 76  
NO. 77  
NO. 78  
NO. 79  
NO. 80  
NO. 81  
NO. 82  
NO. 83  
NO. 84  
NO. 85  
NO. 86  
NO. 87  
NO. 88  
NO. 89  
NO. 90  
NO. 91  
NO. 92  
NO. 93  
NO. 94  
NO. 95  
NO. 96  
NO. 97  
NO. 98  
NO. 99  
NO. 100

