

CONVENTIONAL SIGNS

STATE LINE	TIMBER	
COUNTY LINE	BRUSH	
TOWNSHIP OR RANGE LINE	ORCHARD	
SECTION LINE	ROCK LEDGE	
QUARTER LINE	SAND	
SIXTEENTH LINE	EDGE OF CUT	
RIGHT-OF-WAY LINE	TOE OF EMBANKMENT	
PROPERTY LINE (Except Land Lines)	CATCH BASIN	
VACATED PLATTED PROPERTY	MANHOLE	
CORPORATE OR CITY LIMITS	FIRE HYDRANT	
TRUNK HIGHWAY CENTER LINE	ARC LAMP	
RETAINING WALL		OTHER LAMPS (State Kind)	
STEAM RAILROAD		RAILROAD CROSSING SIGN	
ELECTRIC RAILROAD		RAILROAD CROSSING BELL	
RAILROAD RIGHT-OF-WAY LINE	ELECTRIC WARNING SIGN	
CREEK		CROSSING GATE	
RAPIDS OR WATERFALL		CATTLE GUARD	
DRY RUN		OVERHEAD (Highway Over)	
DRAINAGE DITCH		UNDERPASS (Highway Under)	
HIGH TENSION LINE		ABUTMENT, WALL & PIER	
POWER POLE LINE		BRIDGE	
TELEPHONE OR TELEGRAPH LINE		BUILDING (One Story Frame)	
CULVERT		F-FRAME C-CONCRETE	
DROP INLET		S-STONE T-TILE	
GUARD RAIL		B-BRICK ST-STUCCO	
WIRE FENCE		IRON PIPE	
RAILROAD SNOW FENCE		STONE MONUMENT	
BOARD OR HIGHWAY SNOW FENCE		WOOD STAKE OR HUB	
STONE WALL OR FENCE		MEANDER CORNER	
HEDGE			
WATER PIPE			
SEWER PIPE			
DRAIN TILE			
GRAVEL PIT			
SAND PIT			
CLAY PIT			
ROCK QUARRY			
SPRINGS			
MARSH			
TRUNK HIGHWAY R/W			
RAILROAD R/W			
PRESENT ROAD R/W			

**OFFICE OF COUNTY SURVEYOR
RAMSEY COUNTY
COUNTY ROAD D**

From Arcade Street To Labore Road
RAMSEY COUNTY PROJECT 53-68B

GROSS LENGTH 1,976 FEET 0.237 MILES
LENGTH OF EXCEPTIONS 0 FEET 0 MILES
NET LENGTH 1,976 FEET 0.237 MILES

PLAN, 1 Inch = 100 Feet
PROFILE, Horz. 1 Inch = 100 Feet. Vert. 1 Inch = 10 Feet
WORKING PLANS (Horz. 1 Inch = 100 Feet. Vert. 1 Inch = 10 Feet. Cross-Sections, 1 Inch = 10 Feet)

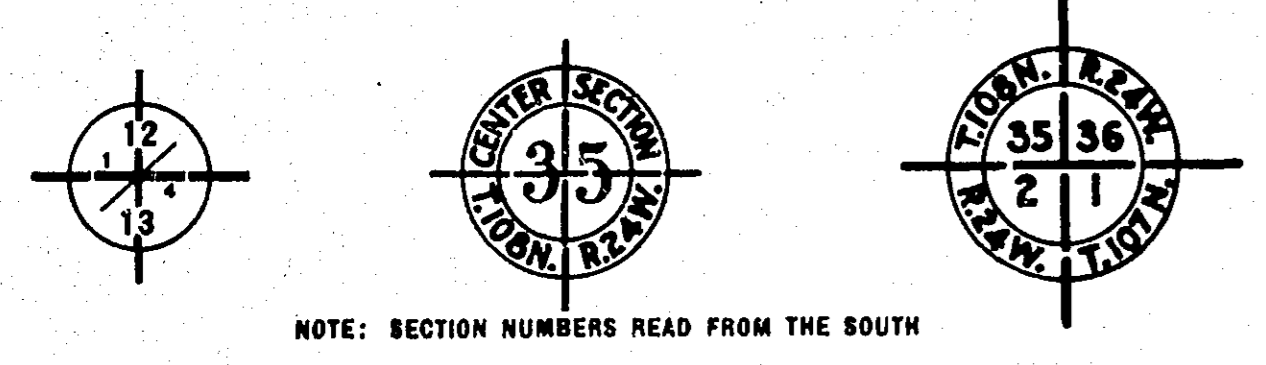
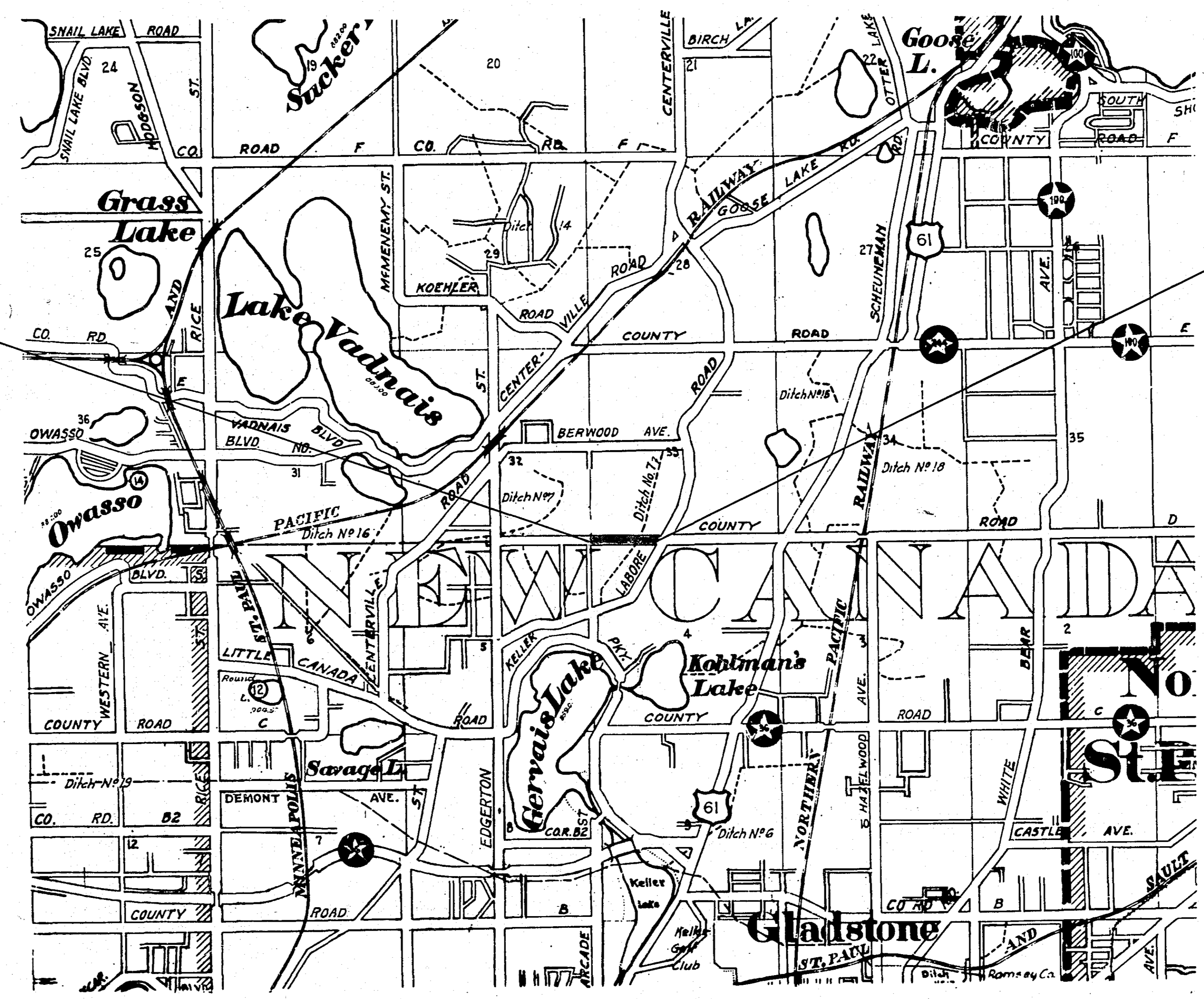
LAYOUT
SCALE, 1 Inch = 2,640 Feet

INDEX

SHEET NO.	DESCRIPTION
1	LAYOUT MAP & TITLE SHEET
2	PLAN & PROFILE-ESTIMATE & MISC. DETAILS
3&4	CROSS SECTIONS

BEGINNING OF PROJECT
STA. 0+00

END OF PROJECT
STA. 19+76



NOTE: SECTION NUMBERS READ FROM THE SOUTH



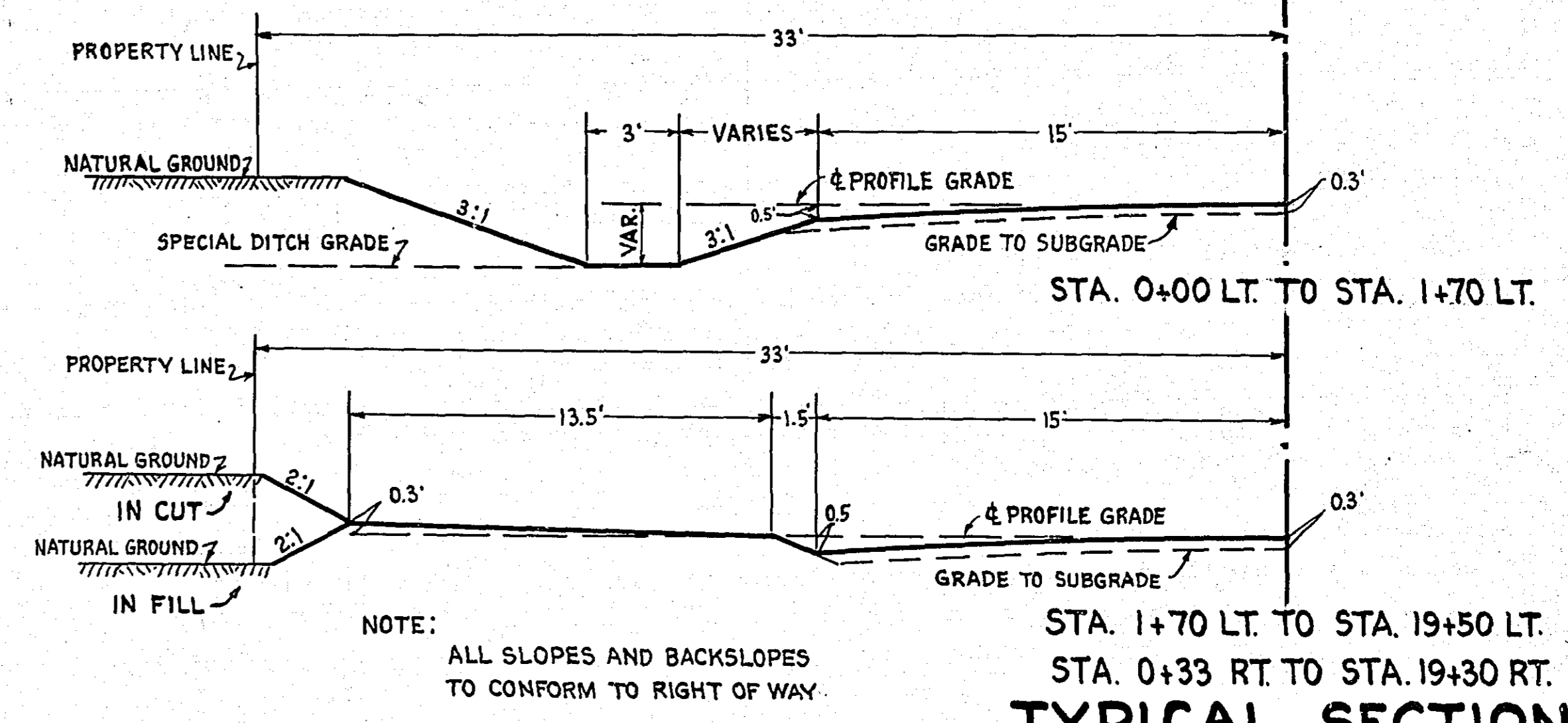
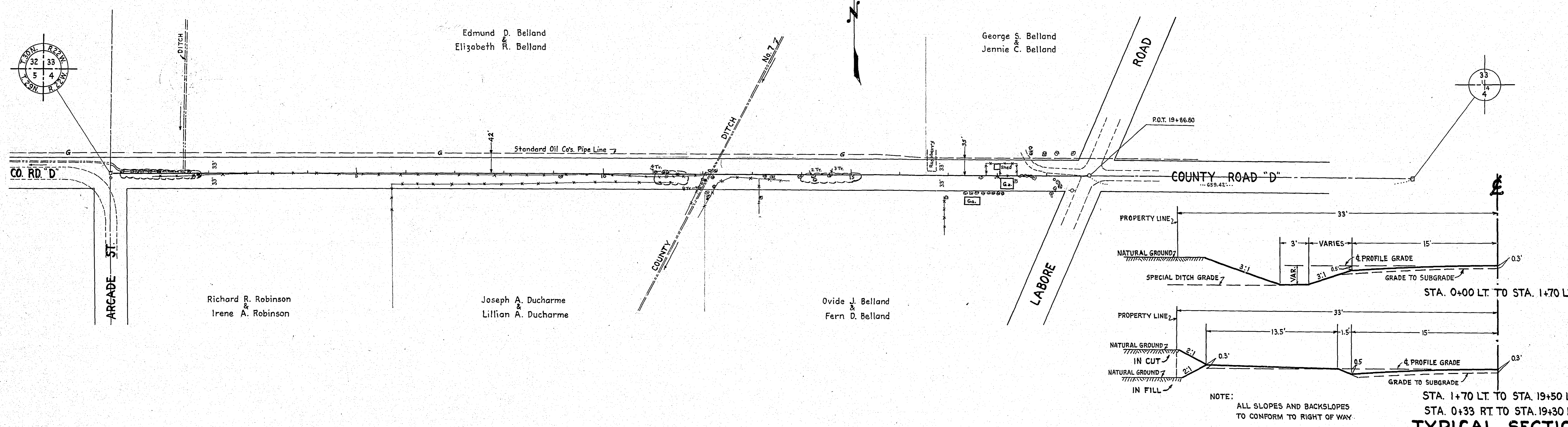
I HEREBY CERTIFY THAT THIS PLAN WAS PREPARED BY ME OR UNDER MY DIRECT SUPERVISION AND THAT I AM A DULY REGISTERED PROFESSIONAL ENGINEER UNDER THE LAWS OF THE STATE OF MINNESOTA.
Harry C. Bronson
DATE 4/27/53 REG. NO. 818

Approved *Harry C. Bronson*
COUNTY SURVEYOR

Approved 4/27/1953 *John E. DeLong*
CHAIRMAN RAMSEY COUNTY BOARD

Sfa. 11+95 Rt. 35.5' To Sta. 12+30 Lt. 35.5'
Furnish & install 36"x80" C.M.
Culv. Excav. 39 C.Y.

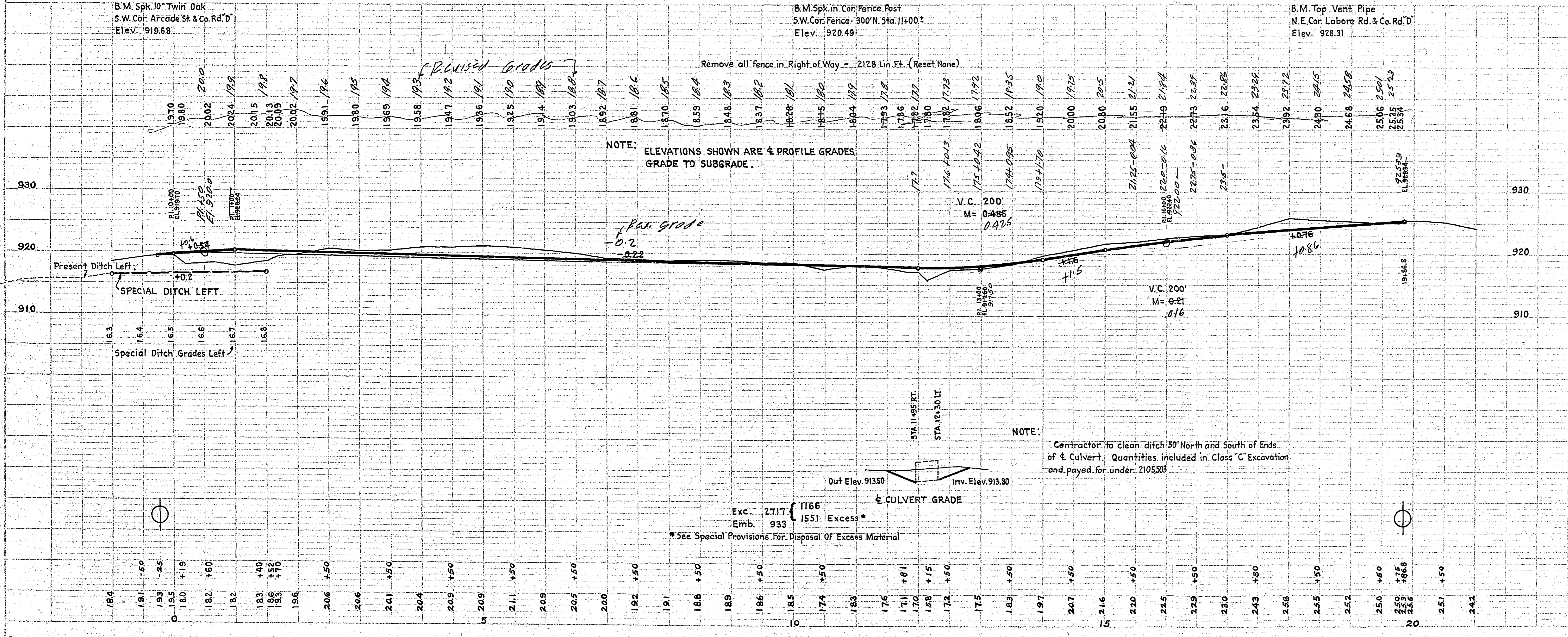
Removal of Buildings in R/W by others.



NOTE:
ALL SLOPES AND BACKSLOPES
TO CONFORM TO RIGHT OF WAY.

TYPICAL SECTIONS

ESTIMATED QUANTITIES			
SPECIF. NO.	ITEM	UNIT	QUANT.
2101.502	CLEARING	TREE	50
2101.507	GRUBBING	TREE	48
2104.510	REMOVE FENCE	L.F.	2128
2105.503	CLASS 'C' EXCAVATION	CU.YD.	2717
2501.501	PIPE CULVERT EXCAVATION	CU.YD.	39
2501.511-36	FURNISH & INSTALL 36" C.M. CULVERT	L.F.	80



Exc. 2717 1166
Emb. 933 1551 Excess*
* See Special Provisions For Disposal Of Excess Material

NOTE:
Contractor to clean ditch 50' North and South of Ends of Culvert. Quantities included in Class 'C' Excavation and paid for under 2105.503

PLAN SURVEYED BY DATE
PLOTTED BY DATE
NOTE BOOK NO. OF SHEETS CHECKED BY NO.

PROFILE SURVEYED BY DATE
PLOTTED BY DATE
NOTE BOOK NO. OF SHEETS CHECKED BY NO.