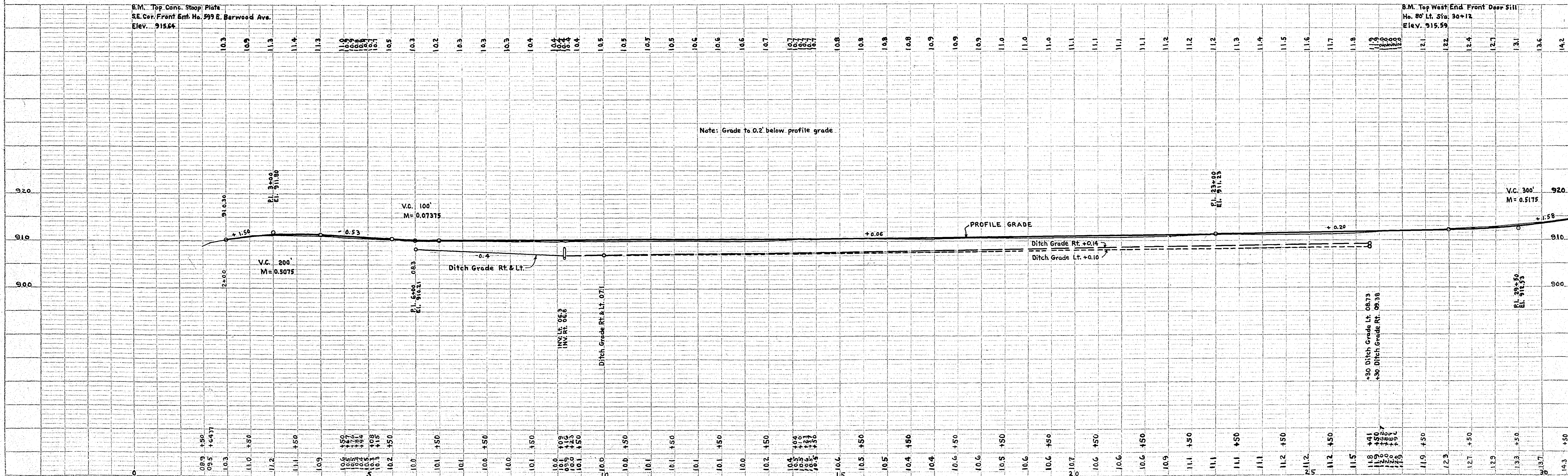
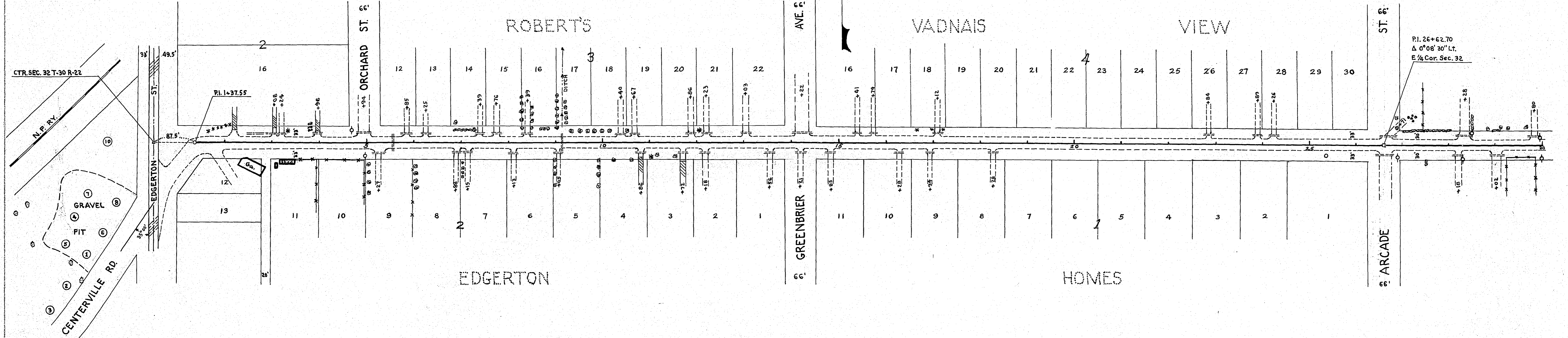


PIT BORINGS	
HOLE NO.	CLAY SAND
1	0'-7" 7'-9"
2	0'-2" 2'-9"
3	0'-1" 1'-11"
4	0'-8" 0'-8"
5	0'-5" 0'-5"
6	6'-8" 0'-5"
7	0'-8" 0'-8"
8	0'-8" 0'-8"
9	0'-8" 0'-8"
10	0'-12" 0'-8"



DATE: _____ BY: _____
 PLAN SURVEYED: _____
 CHECKED: _____
 NOTE BOOK NO. _____
 DATE OF SURVEY: _____

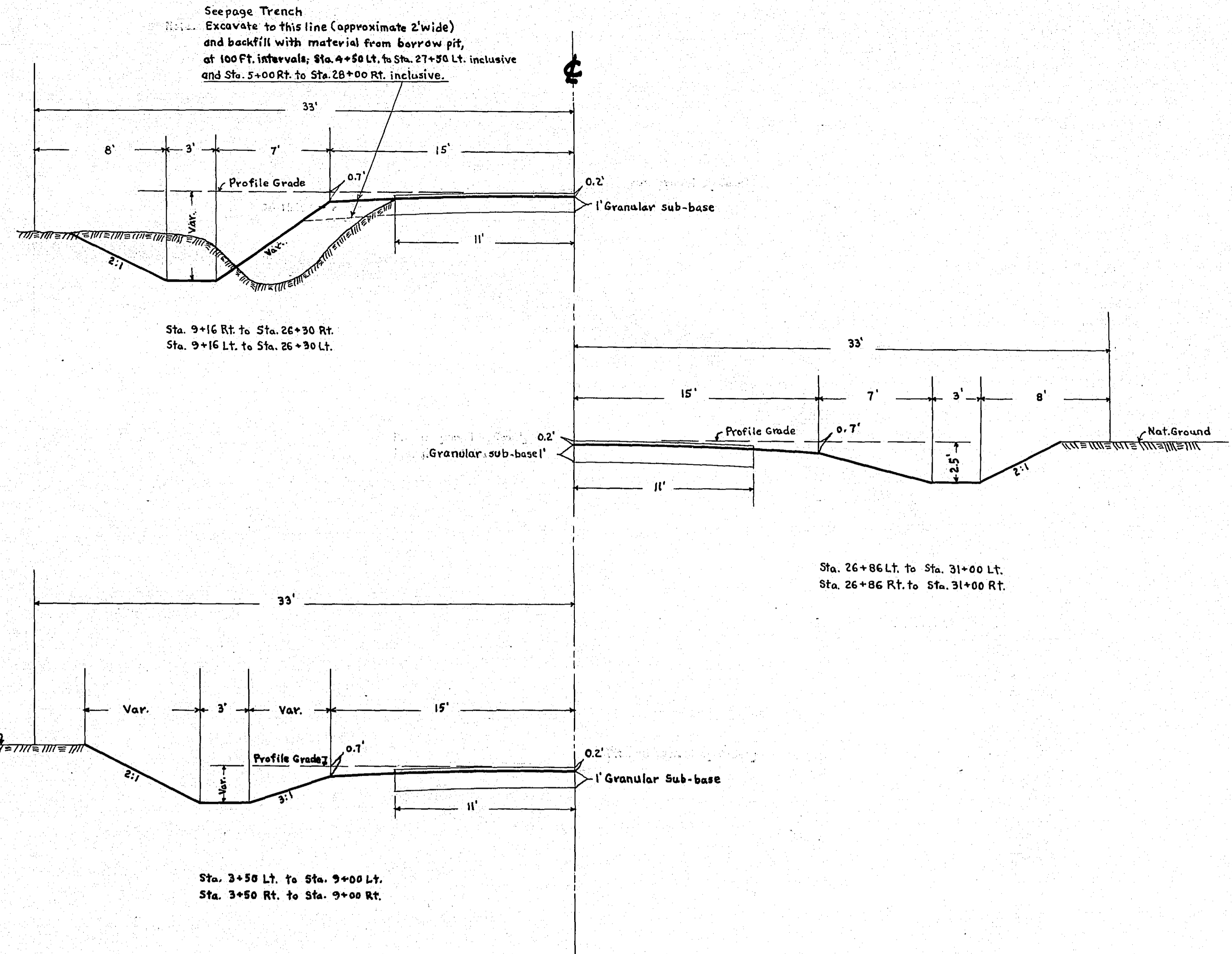
DATE: _____ BY: _____
 PROFILE SURVEYED: _____
 CHECKED: _____
 NOTE BOOK NO. _____
 DATE OF SURVEY: _____

STATEMENT OF ESTIMATED QUANTITIES

SPECIFICATION NO.	ITEM	UNIT	TOTAL ESTIMATED QUANTITIES
2101.502	CLEARING	TREE	12
2101.507	GRUBBING	TREE	12
2104.501	REMOVE PORTABLE CULVERT	LIN. FT.	966
2105.503	CLASS "C" EXCAVATION	CU. YD.	1180
2116.501	SUBGRADE EXCAVATION	CU. YD.	1892
2116.504	GRAVEL BACKFILL IN PLACE	CU. YD.	2611
2501.501	PIPE CULVERT EXCAVATION	CU. YD.	7
2501.521-24	F.&I. S.C. PIPE CULVERT 24"	LIN. FT.	40
2501.531-12	INSTALL C.M. CULVERT 12"	LIN. FT.	92
2501.531-15	INSTALL C.M. CULVERT 15"	LIN. FT.	778
2501.536-18	INSTALL SECTIONAL CONCRETE CULVERT 18"	LIN. FT.	44

STATION	LOCATION	INPLACE	REMARKS	REMOVE PORTABLE CULVERTS LIN. FT.	FURNISH AND INSTALL												PIPE CULVERT EXCAV. CU. YDS.	
					12" C.M.				15" C.M.				18" S.C.P.					18" S.C.P.
					LIN. FT.	LIN. FT.	LIN. FT.	LIN. FT.	LIN. FT.	LIN. FT.	LIN. FT.	LIN. FT.	LIN. FT.	LIN. FT.	LIN. FT.	LIN. FT.		
3+34	LT.	15" C.M.	O.K. Leave															
3+96	LT.	15" "	To Sta. 6+88 Rt.	22										22				
4+94	LT.	15" "													30			
5+27	RT.	15" "													24			
5+57	E	18" S.C.P.	No Culv. Req'd.												31			
5+85	LT.	15" C.M.													20			
6+25	LT.	15" "													20			
6+88	RT.	12" "	Haul to Sta. 3+96 Lt.												22			
7+15	RT.	15" "													20			
7+39	LT.	15" "													20			
7+76	LT.	15" "													20			
8+13	RT.	15" "													20			
8+59	LT.	15" "													20			
9+05	RT.	15" "													20			
9+15	E	18" "													5			
9+15	E	24" "												40				
10+40	LT.	15" "													24			
10+67	LT.	12" "													16			
10+86	RT.	15" "													25			
11+72	RT.	15" "													20			
11+86	LT.	15" "													20			
12+18	RT.	15" "													20			
12+23	LT.	15" "													20			
13+03	LT.	15" "													20			
13+56	RT.	15" "													20			
14+21	RT.	12" "													16			
14+22	LT.	15" "													40			
14+85	RT.	15" "													20			
15+41	LT.	15" "													20			
15+74	LT.	15" "													20			
16+28	RT.	15" "													20			
16+94	RT.	15" "													20			
17+12	LT.	15" "													20			
18+28	RT.	15" "													20			
22+84	LT.	12" "													16			
23+89	LT.	15" "													20			
24+26	LT.	15" "													20			
26+62.10	RT.	18" S.C.P.													44			44
26+71	LT.	15" C.M.													37			
28+18	RT.	12" "													20			
28+28	LT.	12" "													48			
29+02	RT.	15" "													36			
29+80	LT.	12" "													22			

966 40 92 778 44



CONVENTIONAL SIGNS

STATE LINE		TIMBER	
COUNTY LINE		BRUSH	
TOWNSHIP OR RANGE LINE		ORCHARD	
SECTION LINE		ROCK LEDGE	
QUARTER LINE		RAND	
SIXTEENTH LINE		EDGE OF CUT	
RIGHT-OF-WAY LINE		TOE OF EMBANKMENT	
PROPERTY LINE (Except Land Lines)		CATCH BASIN	
VACATED PLATTED PROPERTY		MANHOLE	
CORPORATE OR CITY LIMITS		FIRE HYDRANT	
TRUNK HIGHWAY CENTER LINE		ARC LAMP	
RETAINING WALL		OTHER LAMPS (State Kind)	
STEAM RAILROAD		RAILROAD CROSSING SIGN	
ELECTRIC RAILROAD		RAILROAD CROSSING BELL	
RAILROAD RIGHT-OF-WAY LINE		ELECTRIC WARNING SIGN	
CREEK		CROSSING GATE	
RAPIDS OR WATERFALL		CATTLE GUARD	
DRY RUN		OVERHEAD (Highway Over)	
DRAINAGE DITCH		UNDERPASS (Highway Under)	
HIGH TENSION LINE		ABUTMENT, WALL & PIER	
POWER POLE LINE		BRIDGE	
TELEPHONE OR TELEGRAPH LINE		BUILDING (One Story Frame)	
CULVERT		F-FRAME C-CONCRETE	
DROP INLET		S-STONE T-TILE	
GUARD RAIL		B-BRICK ST-STUCCO	
WIRE FENCE		IRON PIPE	
RAILROAD SNOW FENCE		STONE MONUMENT	
ROAD OR HIGHWAY SNOW FENCE		WOOD STAKE OR NUB	
STONE WALL OR FENCE		MEANDER CORNER	
HEDGE			
WATER PIPE			
SEWER PIPE			
DRAIN TILE			
GRAVEL PIT			
SAND PIT			
CLAY PIT			
ROCK QUARRY			
SPRINGS			
MARSH			
TRUNK HIGHWAY #/w			
RAILROAD #/w			
PRESENT ROAD #/w			

OFFICE OF COUNTY SURVEYOR
RAMSEY COUNTY
BERWOOD AVENUE

From 350 Ft. E. of Edgerton St. To 437 Ft. E. of Arcade St.
RAMSEY COUNTY PROJ. 53-104
 GROSS LENGTH 2750 FEET 0.52 MILES
 LENGTH OF EXCEPTIONS FEET MILES
 NET LENGTH 2750 FEET 0.52 MILES

PLAN, 1 inch = 100 Feet
 PROFILE, Horz. 1 inch = 100 Feet. Vert. 1 inch = 10 Feet
 WORKING PLANS { Horz. 1 inch = 100 Feet
 Vert. 1 inch = 10 Feet
 Cross-Sections, 1 inch = Feet

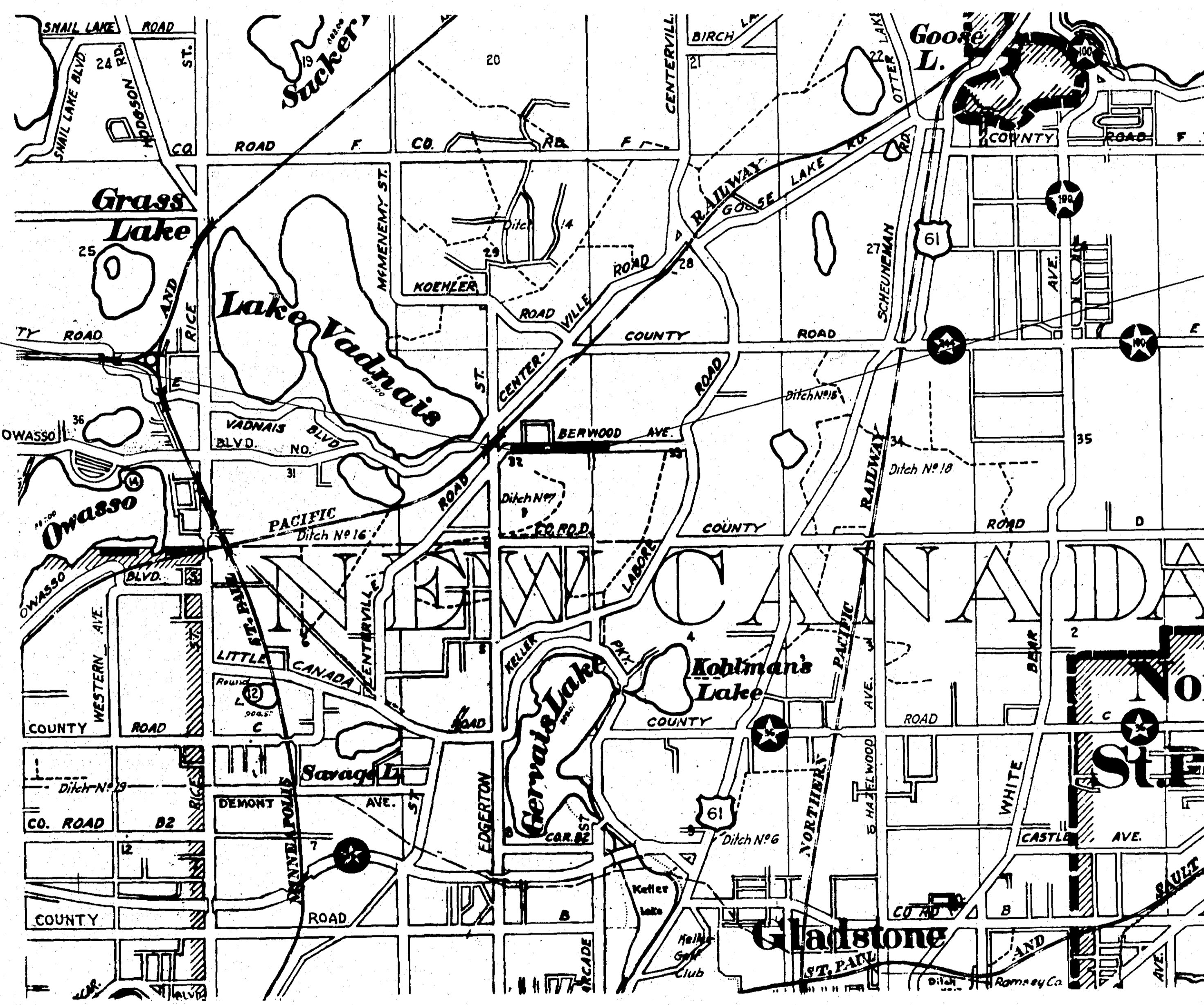
LAYOUT
 SCALE, 1 inch = 2640 Feet

INDEX

SHEET NO.	DESCRIPTION
1	LAYOUT MAP & TITLE SHEET
2	ESTIMATE & MISCL. DETAILS
3	PLAN & PROFILE
4-5-6	CROSS SECTIONS

BEG. OF PROJ.
 STA. 3+50

END OF PROJ.
 STA. 31+00



Approved *Darryl J. Bronson*
 COUNTY SURVEYOR

Approved 3/25 1953 *John W. Deady*
 CHAIRMAN RAMSEY COUNTY BOARD

I HEREBY CERTIFY THAT THIS PLAN WAS PREPARED BY ME OR UNDER MY DIRECT SUPERVISION AND THAT I AM A DULY REGISTERED PROFESSIONAL ENGINEER UNDER THE LAWS OF THE STATE OF MINNESOTA.
Darryl J. Bronson
 DATE _____ REG. NO. 818

CONVENTIONAL SIGNS

STATE LINE		TIMBER	
COUNTY LINE		BRUSH	
TOWNSHIP OR RANGE LINE		ORCHARD	
SECTION LINE		ROCK LEDGE	
QUARTER LINE		SAND	
SIXTEENTH LINE		EDGE OF CUT	
RIGHT-OF-WAY LINE		TOE OF EMBANKMENT	
PROPERTY LINE (Except Land Lines)		CATCH BASIN	
VACATED PLATTED PROPERTY		MANHOLE	
CORPORATE OR CITY LIMITS		FIRE HYDRANT	
TRUNK HIGHWAY CENTER LINE		ARC LAMP	
RETAINING WALL		OTHER LAMPS (Ride Kind)	
STEAM RAILROAD		RAILROAD CROSSING SIGN	
ELECTRIC RAILROAD		RAILROAD CROSSING BELL	
RAILROAD RIGHT-OF-WAY LINE		ELECTRIC WARNING SIGN	
CREEK		CROSSING GATE	
NAPIDS OR WATERFALL		CATTLE GUARD	
DRY RUN		OVERHEAD (Highway Over)	
DRAINAGE DITCH		UNDERPASS (Highway Under)	
HIGH TENSION LINE		ABUTMENT, WALL & PIER	
POWER POLE LINE		BRIDGE	
TELEPHONE OR TELEGRAPH LINE		BUILDING (One Story Frame)	
CULVERT		F-FRAME C-CONCRETE	
DROP INLET		S-STONE T-TILE	
GUARD RAIL		B-BRICK ST-STUCCO	
WIRE FENCE		IRON PIPE	
RAILROAD SNOW FENCE		STONE MONUMENT	
BOARD OR HIGHWAY SNOW FENCE		WOOD STAKE OR HUB	
STONE WALL OR FENCE		MEANDER CORNER	
HEDGE			
WATER PIPE			
SEWER PIPE			
DRAIN TILE			
GRAVEL PIT			
SAND PIT			
CLAY PIT			
ROCK QUARRY			
SPRINGS			
MARSH			
TRUNK HIGHWAY R/W			
RAILROAD R/W			
PRESENT ROAD R/W			

**OFFICE OF COUNTY SURVEYOR
RAMSEY COUNTY
BERWOOD AVENUE**

From 350 Ft. E. of Edgerton St. To 437 Ft. E. of Arcade St.

RAMSEY COUNTY PROJ. 53-104

GROSS LENGTH 2750 FEET 0.52 MILES

LENGTH OF EXCEPTIONS FEET MILES

NET LENGTH 2750 FEET 0.52 MILES

PLAN, 1 Inch = 100 Feet
 PROFILE, Horz. 1 Inch = 100 Feet. Vert. 1 Inch = 10 Feet
 WORKING PLANS { Horz. 1 Inch = 100 Feet
 Vert. 1 Inch = 10 Feet
 Cross-Sections, 1 Inch = Foot

LAYOUT

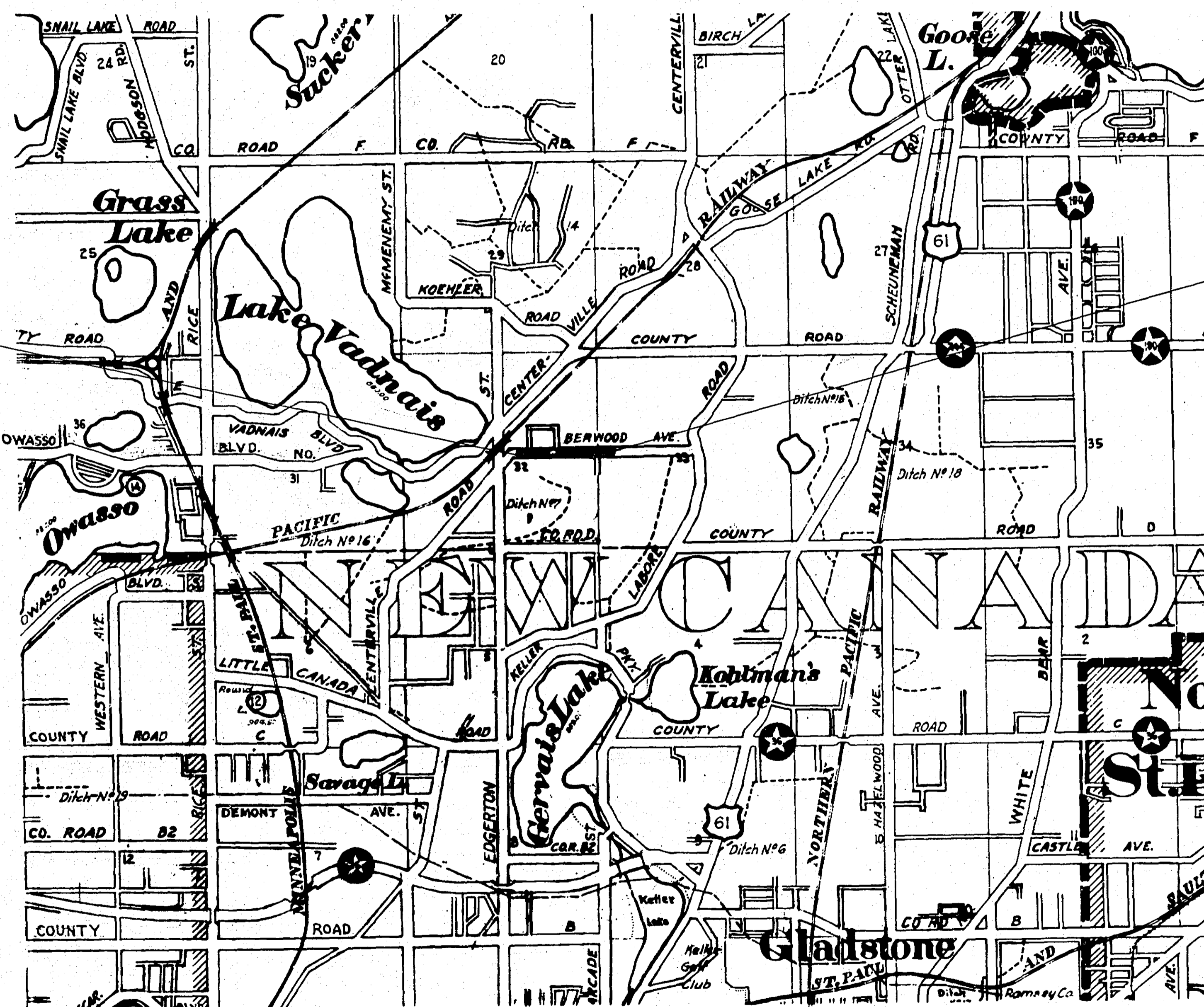
SCALE, 1 Inch = 2640 Feet

INDEX

SHEET NO.	DESCRIPTION
1	LAYOUT MAP & TITLE SHEET
2	ESTIMATE & MISCL. DETAILS
3	PLAN & PROFILE
4-5-6	CROSS SECTIONS

BEG. OF PROJ.
STA. 3+50

END OF PROJ.
STA. 31+00



Approved Barry S. Brennan
COUNTY SURVEYOR

Approved 3/25 1953 John W. DeBruin
CHAIRMAN RAMSEY COUNTY BOARD

I HEREBY CERTIFY THAT THIS PLAN WAS PREPARED BY ME OR UNDER MY DIRECT SUPERVISION AND THAT I AM A DULY REGISTERED PROFESSIONAL ENGINEER UNDER THE LAWS OF THE STATE OF MINNESOTA.
Barry S. Brennan
 DATE..... REG. NO. 818