

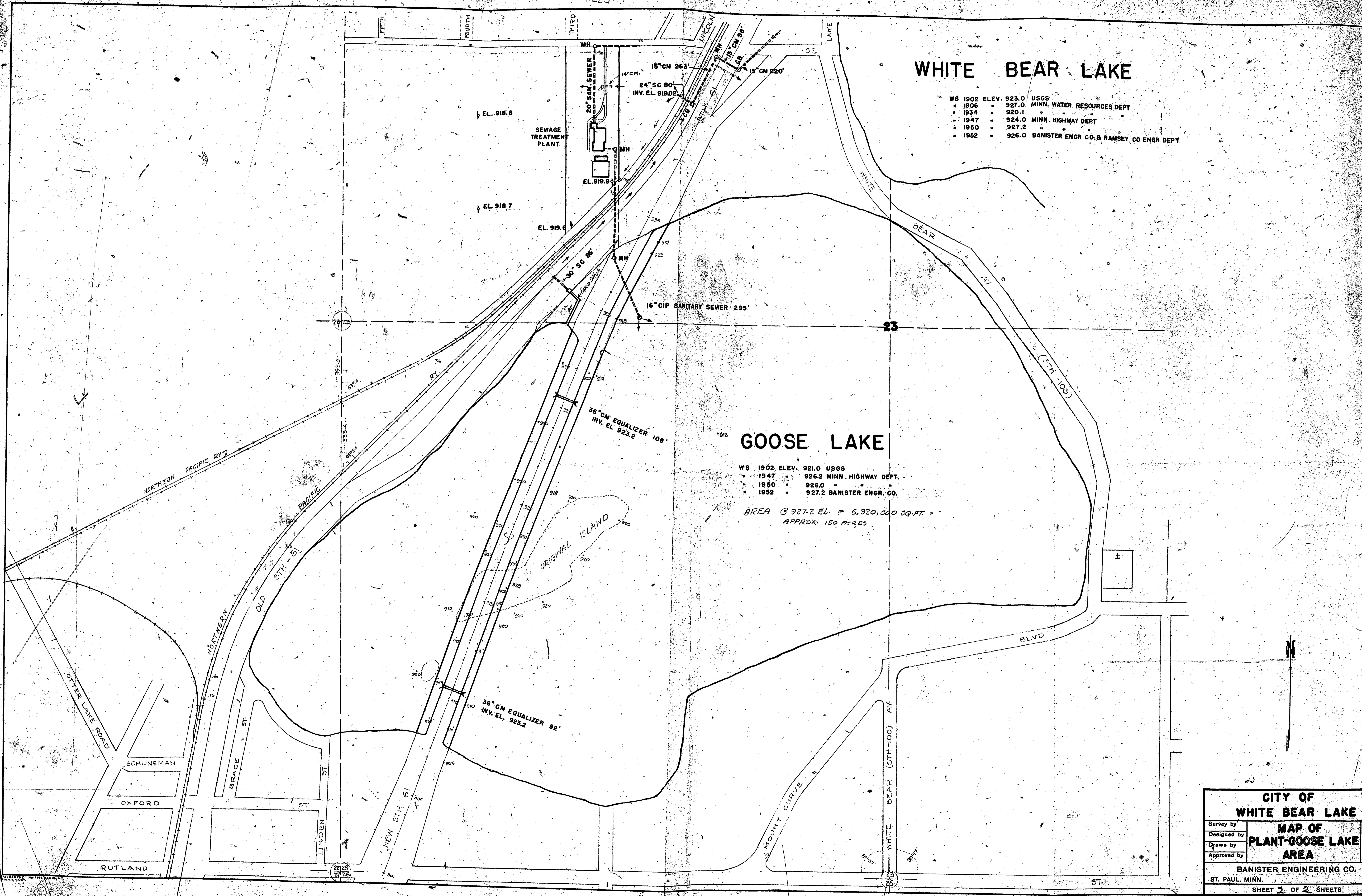
WHITE BEAR LAKE

WS	ELEV.	USGS
1902	923.0	MINN. WATER RESOURCES DEPT
1906	927.0	MINN. HIGHWAY DEPT
1934	920.1	MINN. HIGHWAY DEPT
1947	924.0	MINN. HIGHWAY DEPT
1950	927.2	BANISTER ENGR CO. & RAMSEY CO ENGR DEPT
1952	926.0	BANISTER ENGR CO. & RAMSEY CO ENGR DEPT

GOOSE LAKE

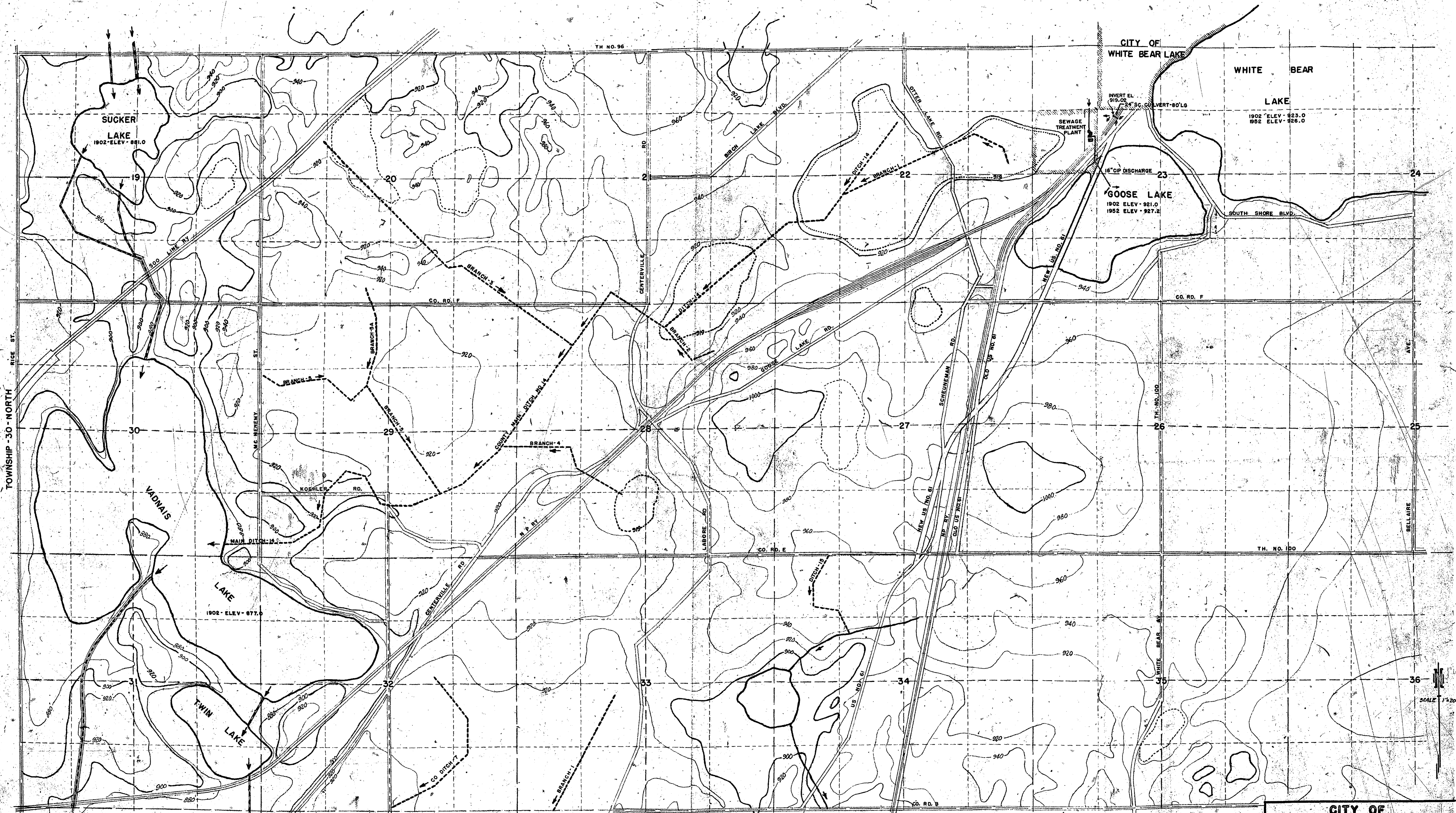
WS	ELEV.	USGS
1902	921.0	MINN. HIGHWAY DEPT.
1947	926.2	MINN. HIGHWAY DEPT.
1950	926.0	BANISTER ENGR. CO.
1952	927.2	BANISTER ENGR. CO.

AREA @ 927.2 EL. = 6,320,000 SQ. FT. =
APPRX. 150 ACRES



CITY OF WHITE BEAR LAKE	
Survey by	
Designed by	
Drawn by	
Approved by	
MAP OF PLANT-GOOSE LAKE AREA	
BANISTER ENGINEERING CO. ST. PAUL, MINN.	
SHEET 2 OF 2 SHEETS	

6766 / 67



TOWNSHIP 30-NORTH

RANGE 22-WEST

DATA COMPILED FROM
 Minnesota State Highway Department
 Northern Pacific Railway Co.
 City of St. Paul Water Department
 U.S. Dept. of Interior Geological Department
 Ramsey County Engineers Department
 Ramsey County Auditors Office
 Soo Line Railway Company
 Minnesota Water Resources Department
 Aerial Photographs - U.S. Army

CITY OF WHITE BEAR LAKE		Revisions
Survey by	DRAINAGE MAP	
Designed by		
Drawn by		
Approved by		
BANISTER ENGINEERING CO.		
ST. PAUL, MINN.		
SHEET 1 OF 2 SHEETS		

6766