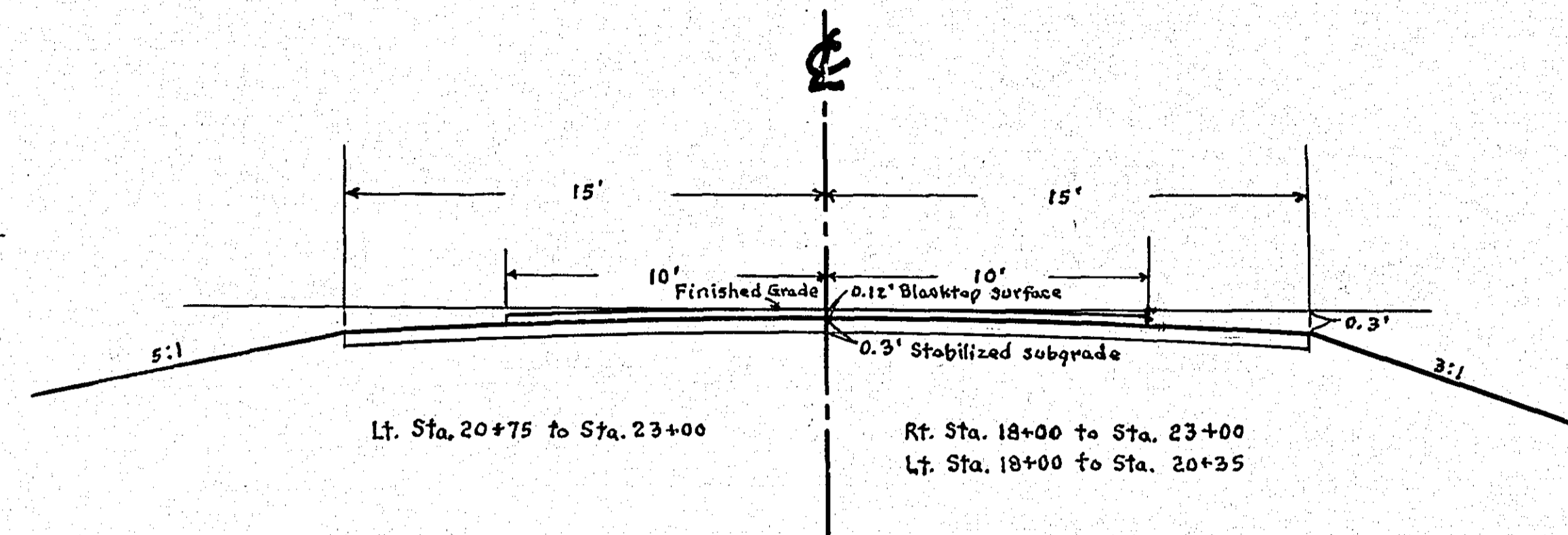
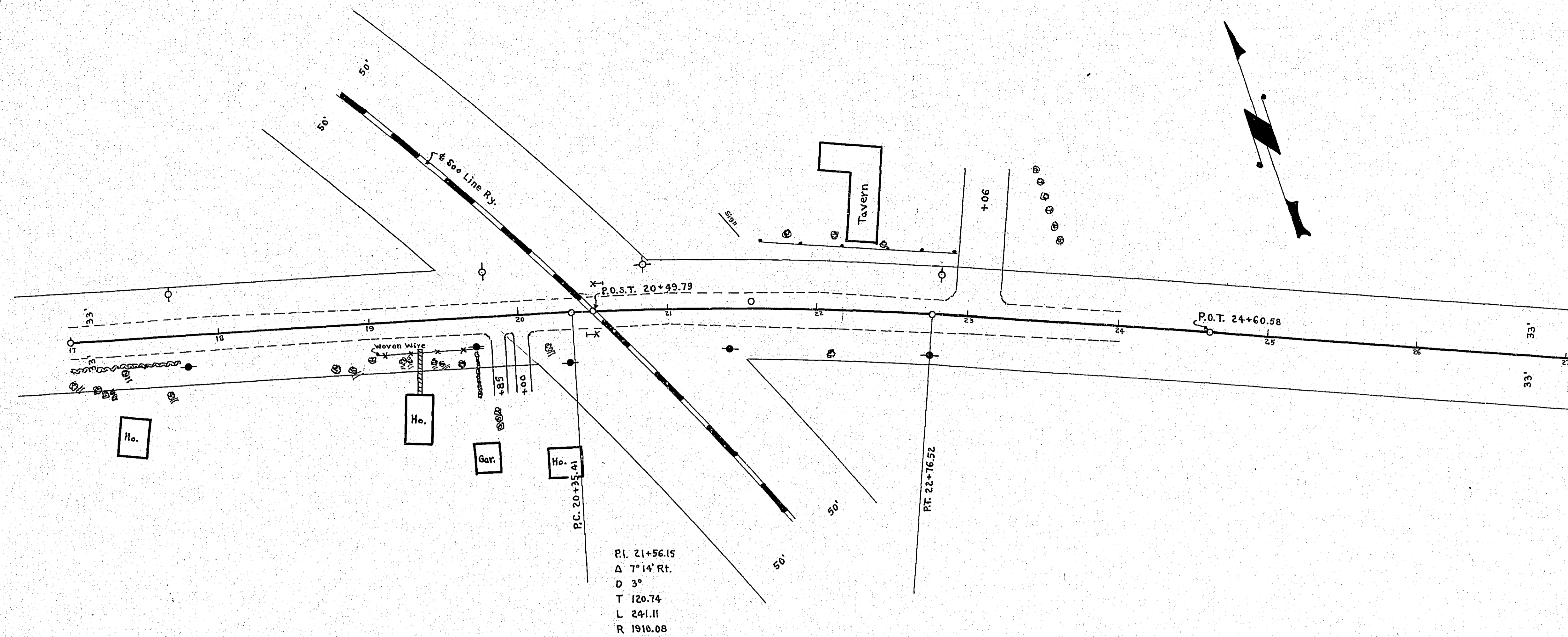
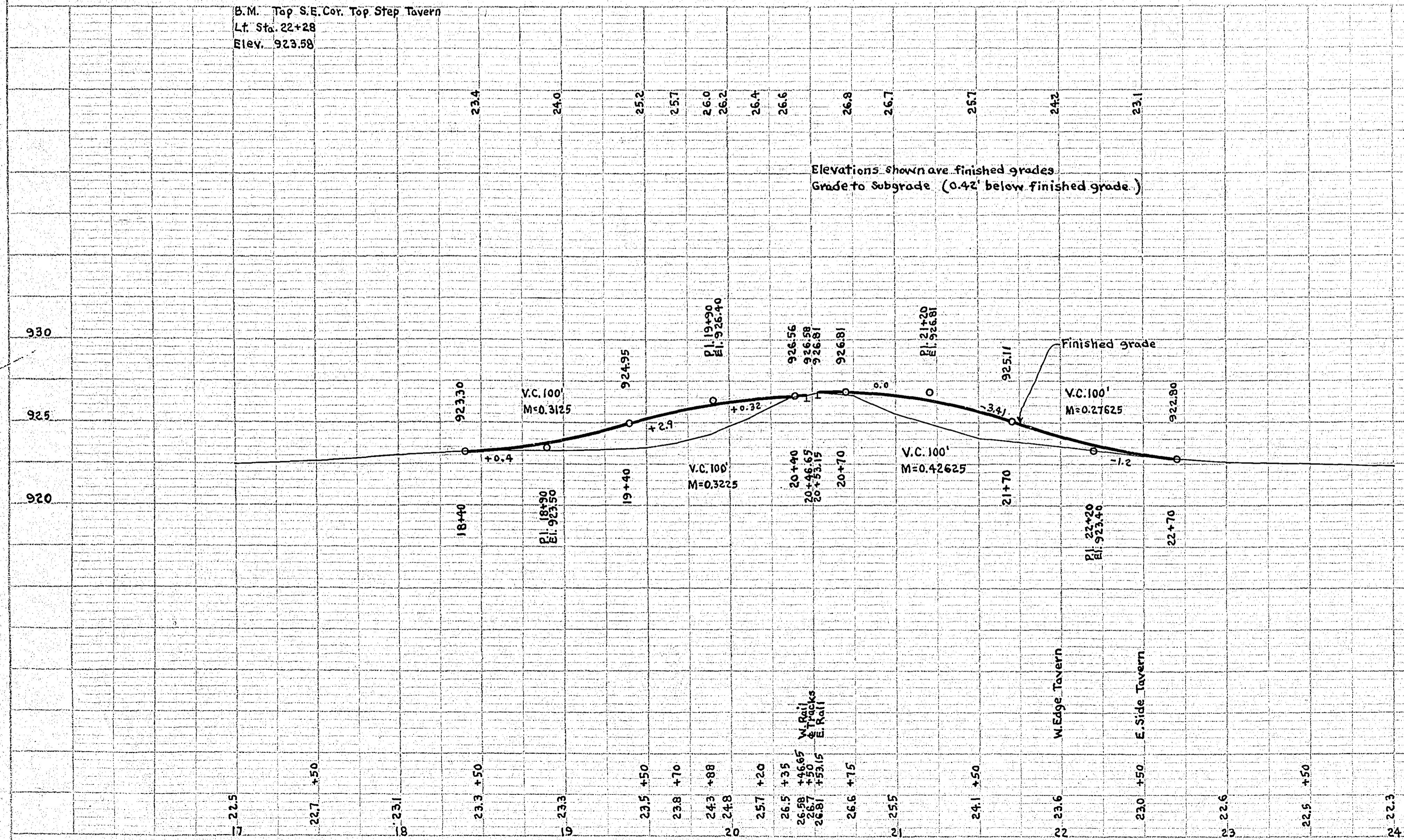


PLAN  
 SUBMITTED BY DATE  
 PLOTTED BY  
 NOTE BOOK ALIGNED CHECKED  
 NO. RT. OF WAY CHECKED

PROFILE  
 SUBMITTED BY DATE  
 PLOTTED BY  
 NOTE BOOK GRADES CHECKED  
 NO. STRUCTURE NOTATION CHECKED



B.M. Top S.E. Cor. Top Step Tavern  
 L.F. Sta. 22+28  
 Elev. 923.58



Elevations shown are finished grades.  
 Grade to Subgrade (0.42' below finished grade)

OFFICE OF  
 RAMSEY COUNTY SURVEYOR  
 HARRY S. BRONSON  
 GRADING PLAN  
**LITTLE CANADA RD.**  
 AT 500 LINE RAILROAD CROSSING  
 JUNE 1951 SCALE AS SHOWN

APPROVED \_\_\_\_\_  
 RAMSEY COUNTY SURVEYOR