

**CONVENTIONAL SIGNS**

STATE LINE	.....	TIMBER	
COUNTY LINE	.....	BRUSH	
TOWNSHIP OR RANGE LINE	.....	ORCHARD	
SECTION LINE	.....	ROCK LEDGE	
QUARTER LINE	.....	SAND	
SIXTEENTH LINE	.....	EDGE OF CUT	
RIGHT-OF-WAY LINE	.....	TOE OF EMBANKMENT	
PROPERTY LINE (Except Land Lines)	.....	CATCH BASIN	
VACATED PLATTED PROPERTY	.....	MANHOLE	
CORPORATE OR CITY LIMITS	.....	FIRE HYDRANT	
TRUNK HIGHWAY CENTER LINE	.....	ARC LAMP	
RETAINING WALL		OTHER LAMPS (State Kind)	
STEAM RAILROAD		RAILROAD CROSSING SIGN	
ELECTRIC RAILROAD		RAILROAD CROSSING BELL	
RAILROAD RIGHT-OF-WAY LINE	.....	ELECTRIC WARNING SIGN	
CREEK		CROSSING GATE	
RAPIDS OR WATERFALL		CATTLE GUARD	
DRY RUN		OVERHEAD (Highway Over)	
DRAINAGE DITCH		UNDERPASS (Highway Under)	
HIGH TENSION LINE		ABUTMENT, WALL & PIER	
POWER POLE LINE		BRIDGE	
TELEPHONE OR TELEGRAPH LINE		BUILDING (One Story Frame)	
CULVERT		F-FRAME	
DROP INLET		C-CONCRETE	
GUARD RAIL		S-STONE	
WIRE FENCE		B-BRICK	
RAILROAD SNOW FENCE		T-TILE	
BOARD OR HIGHWAY SNOW FENCE		ST-STUCCO	
STONE WALL OR FENCE		IRON PIPE	
HEDGE		STONE MONUMENT	
WATER PIPE		WOOD STAKE OR HUB	
SEWER PIPE		MEANDER CORNER	
DRAIN TILE			
GRAVEL PIT			
SAND PIT			
CLAY PIT			
ROCK QUARRY			
SPRINGS			
MARSH			
TRUNK HIGHWAY R/W			
RAILROAD R/W			
PRESENT ROAD R/W			

**OFFICE OF COUNTY SURVEYOR**  
**RAMSEY COUNTY**  
**GRADING PLAN**  
**COUNTY ROAD "D"**

From Lexington Ave. To Victoria Street  
**RAMSEY COUNTY PROJ. 51-68D**  
 GROSS LENGTH 2633.77 FEET 0.5 MILES  
 LENGTH OF EXCEPTIONS 30.77 FEET 0.006 MILES  
 NET LENGTH 2603.00 FEET 0.49 MILES

PLAN, 1 Inch = 100 Feet  
 PROFILE, Horiz. 1 Inch = 100 Feet. Vert. 1 Inch = 10 Feet  
 WORKING PLANS { Horiz. 1 Inch = 100 Feet  
 Vert. 1 Inch = 10 Feet  
 Cross-Sections, 1 Inch = 10 Feet

**LAYOUT**

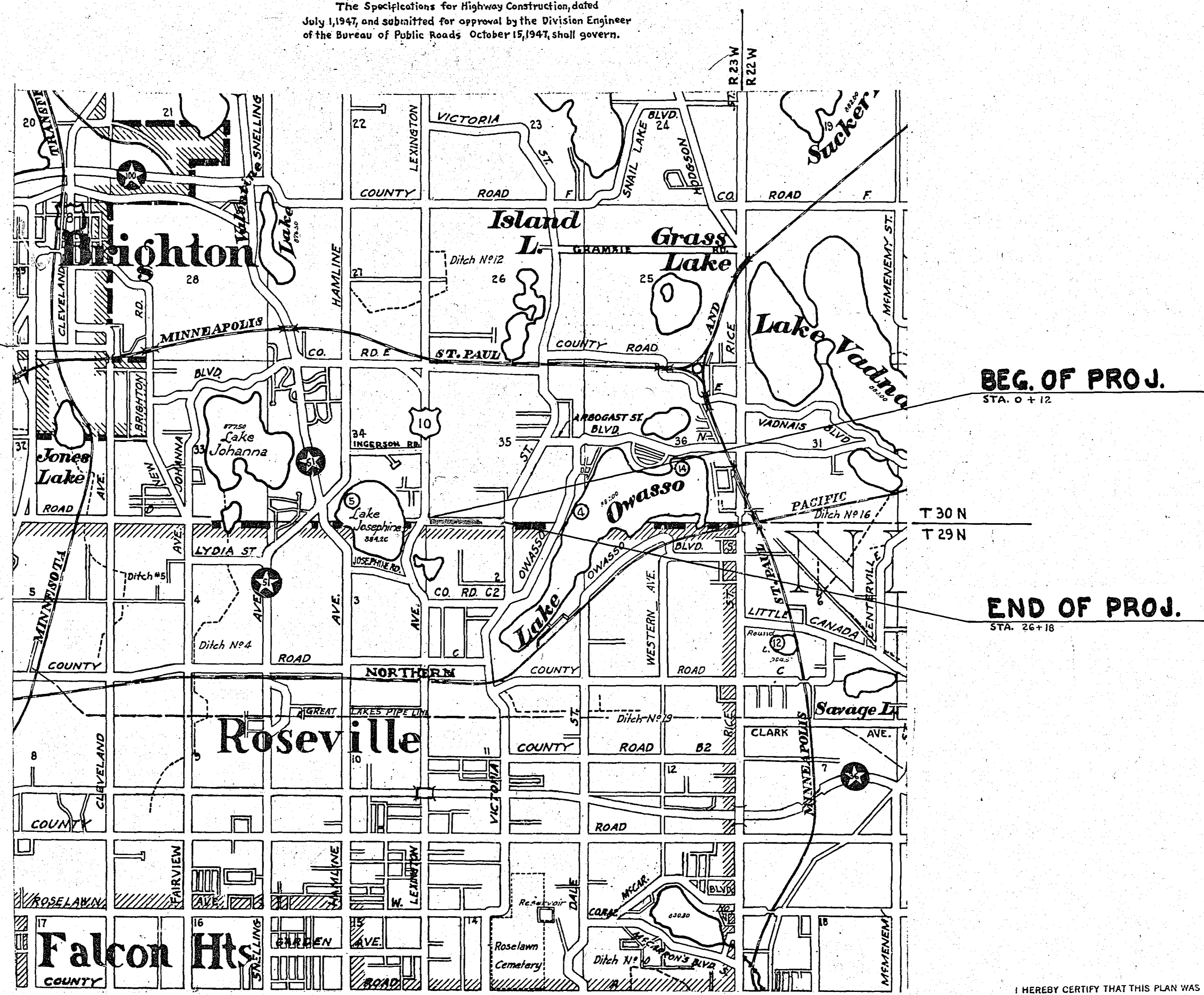
SCALE, 1 Inch = 2640 Feet

**SPECIFICATIONS**

The Specifications for Highway Construction, dated July 1, 1947, and submitted for approval by the Division Engineer of the Bureau of Public Roads October 15, 1947, shall govern.

**INDEX**

SHEET NO.	DESCRIPTION
1	LAYOUT MAP & TITLE SHEET
2	ESTIMATE & MISC. DETAILS
3	PLAN & PROFILE
4-6	CROSS SECTIONS



Approved Harry S. Benson COUNTY SURVEYOR  
 Approved 5/2 1951 Ed. J. D. ... CHAIRMAN RAMSEY COUNTY BOARD

I HEREBY CERTIFY THAT THIS PLAN WAS PREPARED BY ME OR UNDER MY DIRECT SUPERVISION AND THAT I AM A DULY REGISTERED PROFESSIONAL ENGINEER UNDER THE LAWS OF THE STATE OF MINNESOTA.  
Harry S. Benson  
 DATE 5/2/51 REG. NO. 818



PLAN SURVEYED  
 FLOTTED  
 NOTE BOOK CHECKED  
 NO. OF WAY CHECKED

PROFILE SURVEYED  
 FLOTTED  
 NOTE BOOK CHECKED  
 NO. OF WAY CHECKED

Sta. 0+19 ±  
 F.&I. 15" x 66' S.C.P.

Sta. 4+20 Rt. 15' & Lt. 15'  
 Const. (2) C.B. Type N#1  
 F.&I. 24" x 30' S.C.P.  
 F.&I. 24" x 22' C.M. Rt.  
 F.&I. 18" x 20' C.M. Lt.  
 Lt. Exc. for C.B.#1 = 9.98 Cu.Yds.  
 L.F. of C.B. = 4.83  
 Rt. Exc. for C.B.#2 = 9.25 Cu.Yds.  
 L.F. of C.B. = 4.43

Sta. 10+00 Rt. 15' & Lt. 15'  
 Const. (2) C.B. Type N#1  
 F.&I. 18" x 30' S.C.P.  
 F.&I. 18" x 22' C.M. Lt.  
 Lt. Exc. for C.B.#3 = 6.38 Cu.Yds.  
 L.F. of C.B. = 3.63  
 Rt. Exc. for C.B.#4 = 5.64 Cu.Yds.  
 L.F. of C.B. = 3.13

Sta. 15+00 Rt. 15' & Lt. 15'  
 Const. (2) C.B. Type N#1  
 F.&I. 18" x 30' S.C.P.  
 F.&I. 18" x 20' C.M. Rt.  
 F.&I. 15" x 16' C.M. Lt.  
 Lt. Exc. for C.B.#5 = 5.56 Cu.Yds.  
 L.F. of C.B. = 3.03  
 Rt. Exc. for C.B.#6 = 5.93 Cu.Yds.  
 L.F. of C.B. = 3.33

Sta. 26+10 Rt.  
 In p. 15" x 30' C.M.  
 Remove & Stockpile

Sta. 26+12 ±  
 F.&I. 15" x 66' S.C.P.

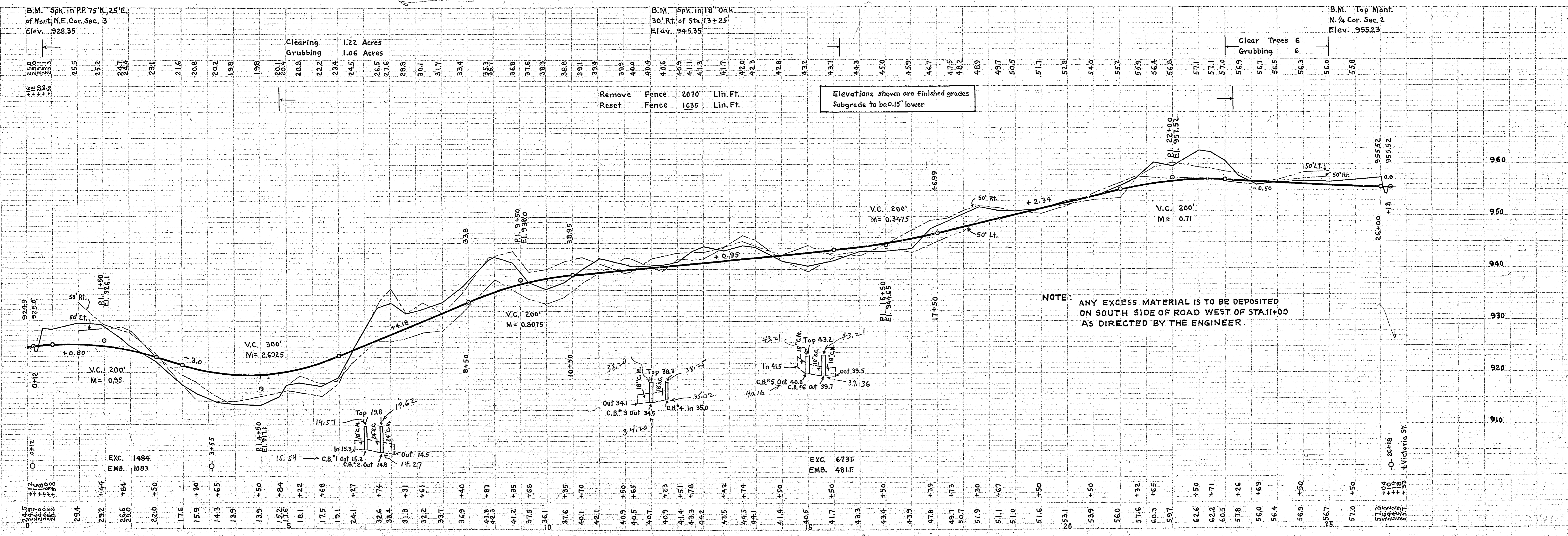
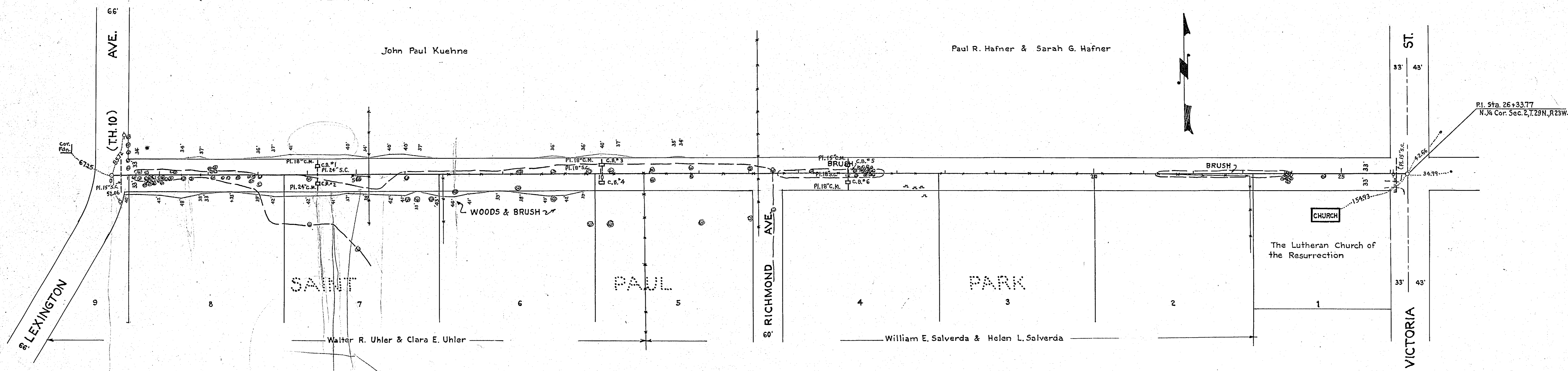


PLATE 1 - PLAN & PROFILE OF ROAD TO BE CONSTRUCTED