

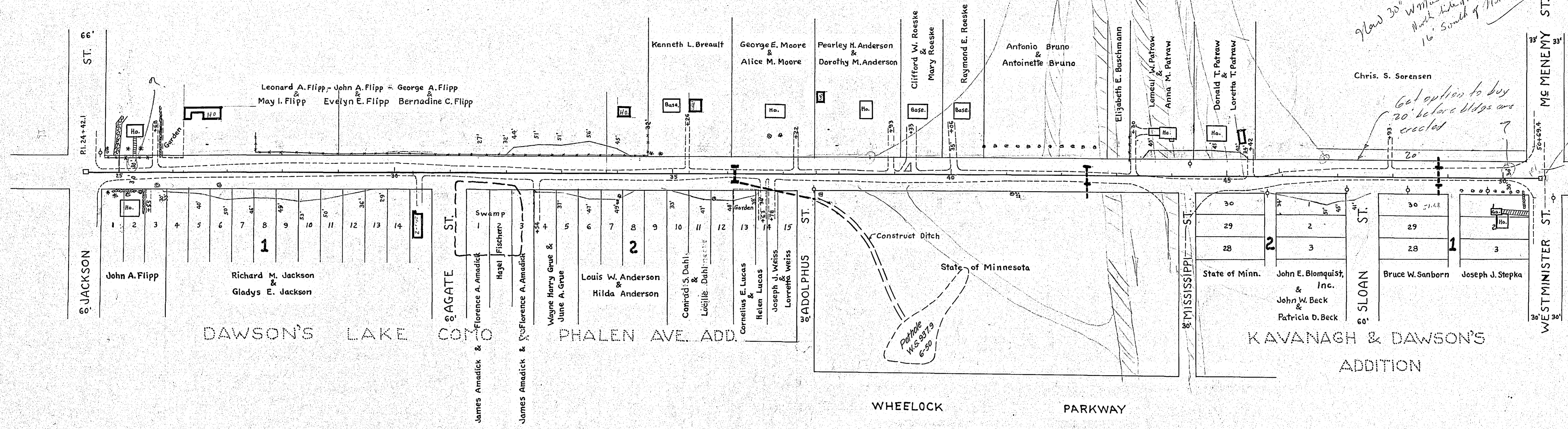
Sta. 36+12 Rt. & Lt. P.I.C.B. See Special Detail  
 Pl. 18" x 30' Conc.  
 Pl. 24" x 14' Conc. Rt. 36+12 to Rt. Sta. 37+56

Sta. 42+50 Rt. & Lt. Pl. C.B. Type No. 1  
 Pl. 15" x 30' Conc.  
 Pl. 15" x 24' Conc. Rt.

Sta. 48+00 Rt. to Sta. 49+48 Rt.  
 Imp. 15" x 40' C.M.  
 Remove, Haul to Sta. 6+80  
 Rt. & Lt. Pl. C.B. Type No. 1  
 Pl. 18" x 30' Conc.  
 Pl. 18" x 20' Conc. Lt.  
 Pl. 18" x 16' Conc. Rt.  
 Sta. 48+00 Rt. to Sta. 49+48 Rt.  
 Hold Slopes to R/W.

*Handwritten notes:*  
 9' low 30" width  
 Mark side of flow  
 16' South of Max Profile  
 Get option to buy  
 20' before bids are  
 erected

50+69.4



PLAN  
 CHECKED BY: [ ]  
 DATE: [ ]  
 NOTE BOOK: [ ]  
 NO. [ ]  
 DATE: [ ]  
 CHECKED BY: [ ]  
 DATE: [ ]



PROFILE  
 CHECKED BY: [ ]  
 DATE: [ ]  
 NOTE BOOK: [ ]  
 NO. [ ]  
 DATE: [ ]  
 CHECKED BY: [ ]  
 DATE: [ ]

*Handwritten:* Loopers Run to Menemy

PLAN	SUBMITTED	DATE
	NOTE BOOK	
	REVISIONS CHECKED	
	NO. OF WAYS CHECKED	

PROFILE	SUBMITTED	DATE
	NOTE BOOK	
	REVISIONS CHECKED	
	NO. OF WAYS CHECKED	

