

Sta. 102+92 - 12' Lt. to 22' Rt.
 Inp. 10" x 34" C.M.

Sta. 104+07 - 12' Lt. to 20' Rt.
 Inp. 18" x 32" Conc. Culv.

Remove old spur track
 105+85 ±
 Pl. 15" x 42" C.M.

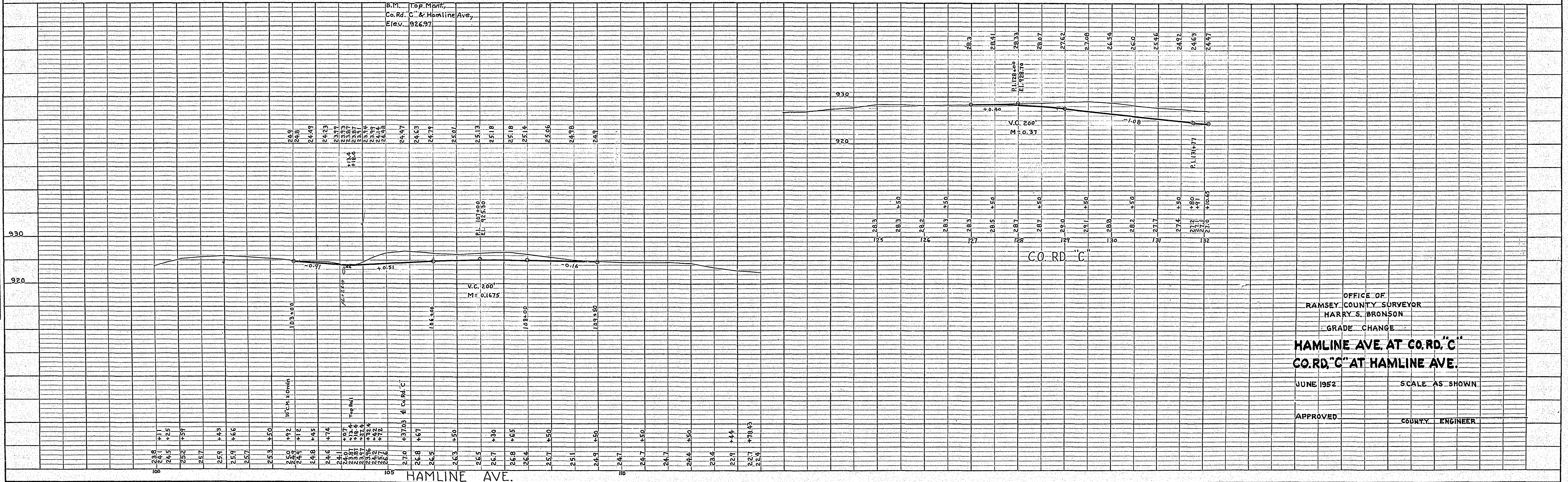
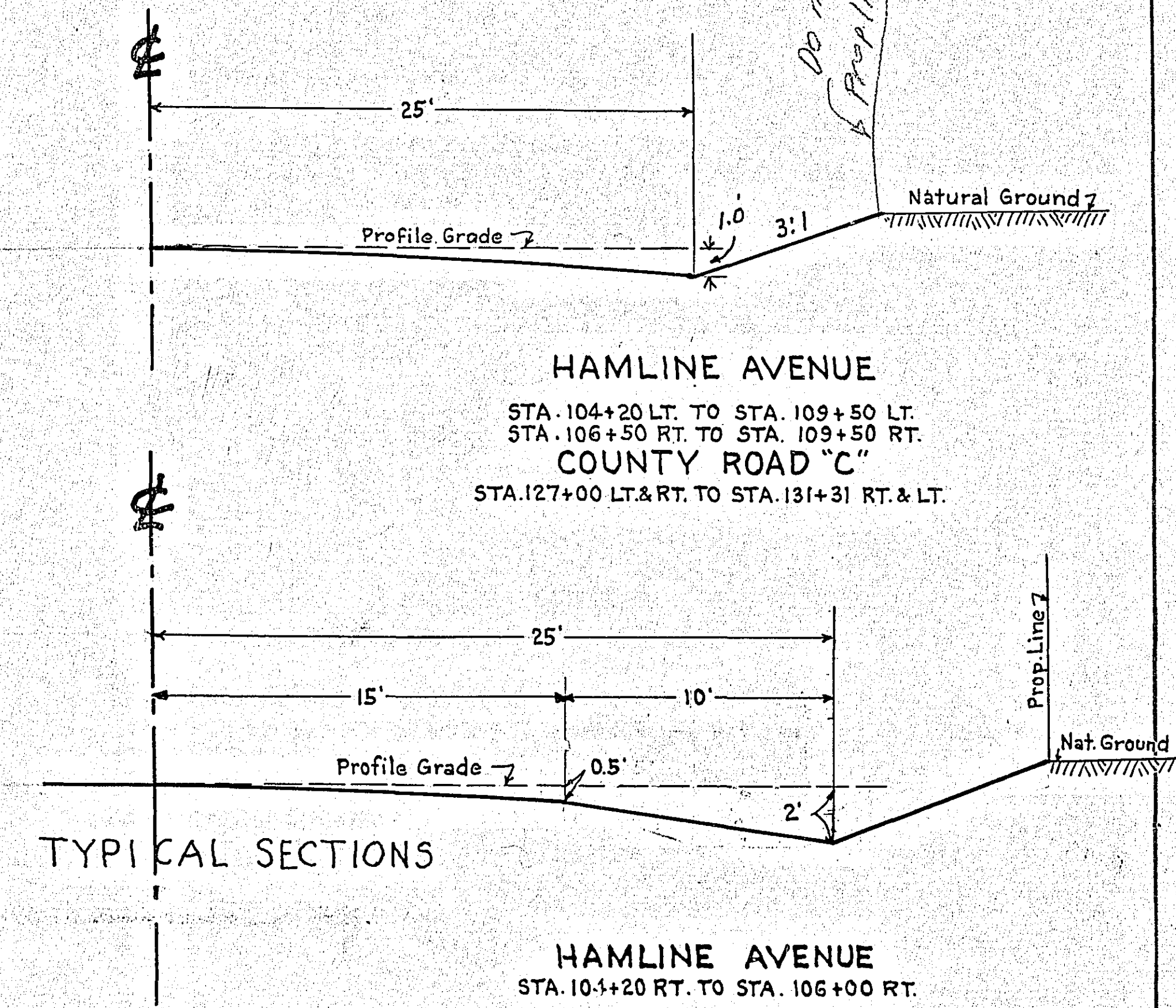
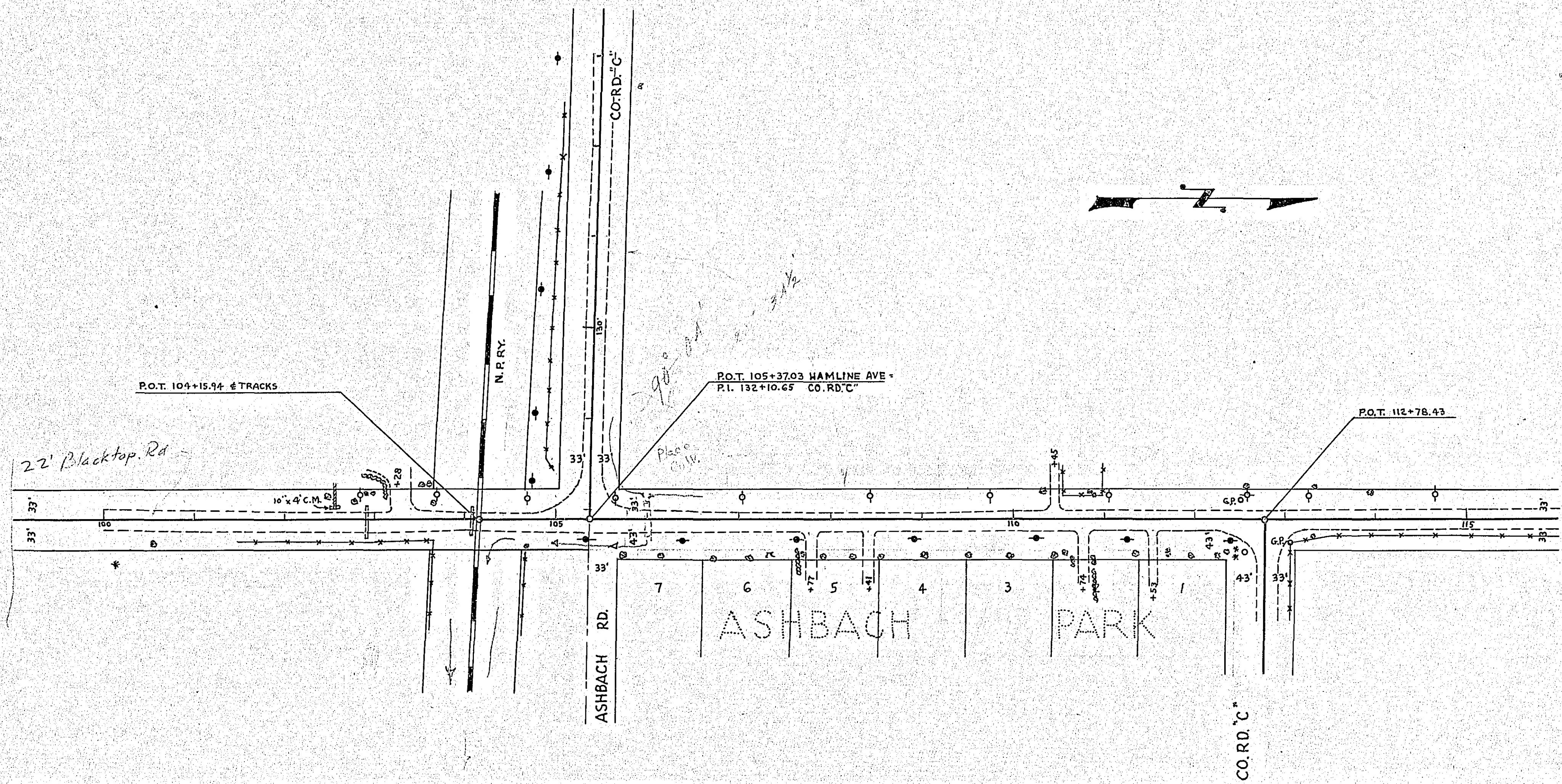
106.00

Notify Tel. & Power Co

Do not go beyond
 Prop. Line

| | | |
|------|--------------------|------|
| PLAN | SURVEYED | DATE |
| | PLOTTED | BY |
| | ALIGNED CHECKED | |
| | RT. OF WAY CHECKED | |
| | NO. | |

| | | |
|---------|---------------------------|------|
| PROFILE | SURVEYED | DATE |
| | PLOTTED | BY |
| | GRADES CHECKED | |
| | STRUCTURE NOTATIONS CH'VD | |
| | NO. | |



OFFICE OF
 RAMSEY COUNTY SURVEYOR
 HARRY S. BRONSON
 GRADE CHANGE
HAMLIN AVE. AT CO. RD. "C"
CO. RD. "C" AT HAMLIN AVE.
 JUNE 1952 SCALE AS SHOWN
 APPROVED COUNTY ENGINEER