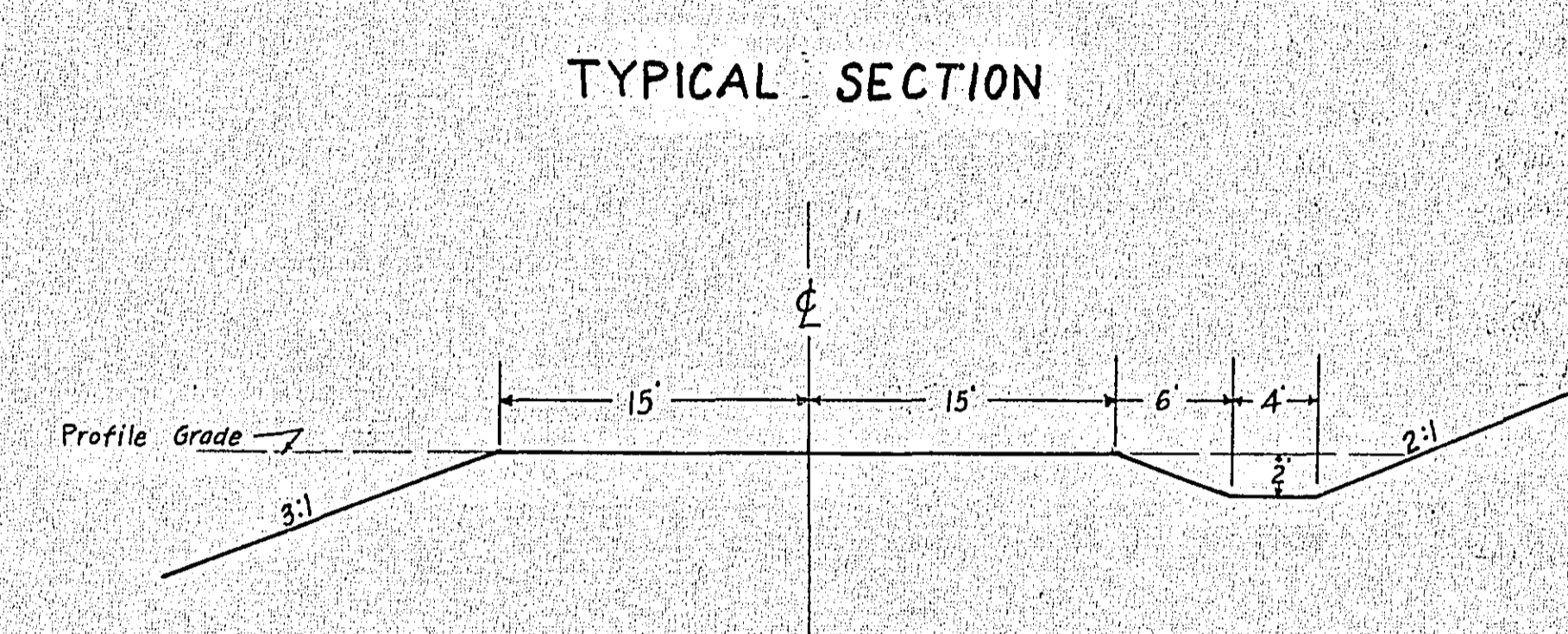
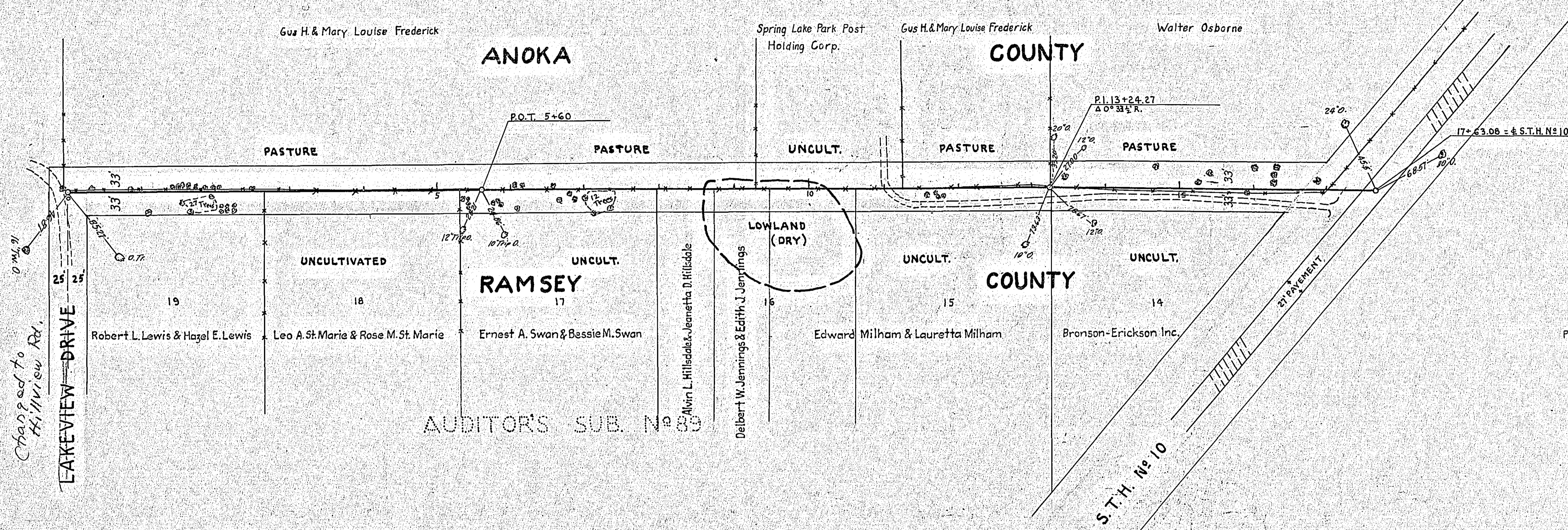
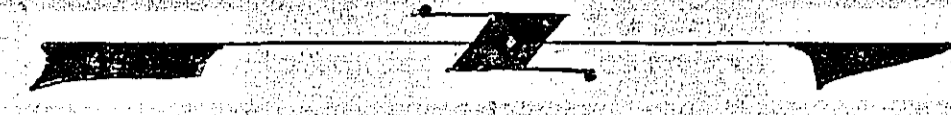


Sta. 2+00 ±
Furn. & Ins. 15'x40' C.M.

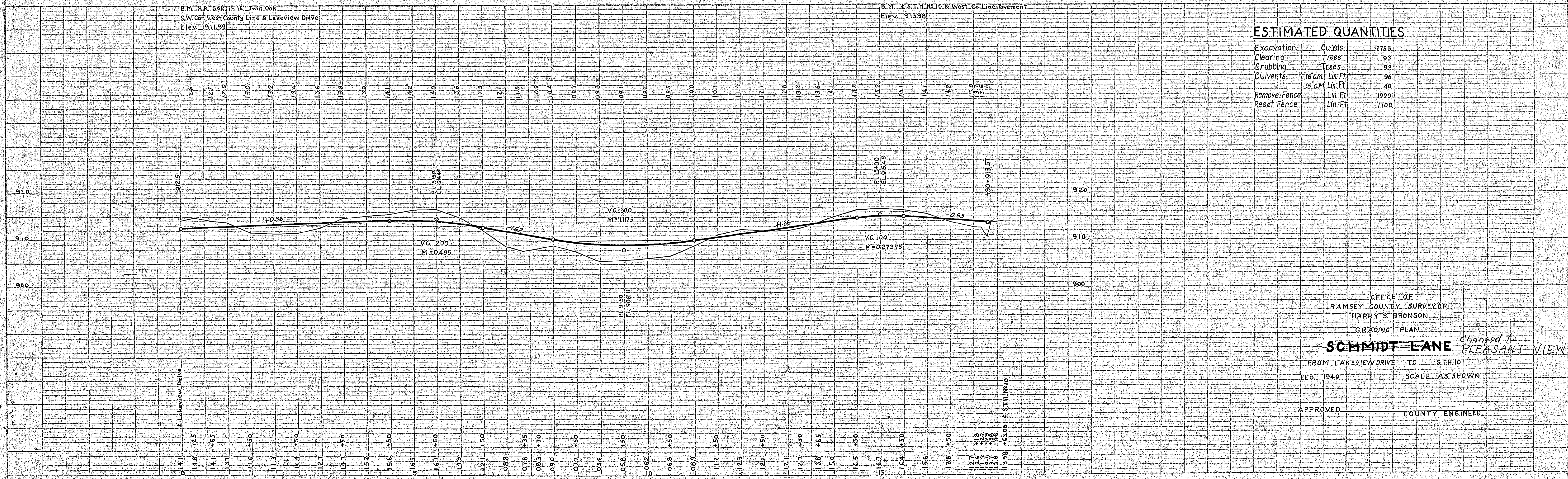
Sta. 9+00 ±
Furn. & Ins. 18'x46' C.M.

Sta. 17+20 ±
Furn. & Ins. 18'x50' C.M.



B.M. R.R. Spk. in 16" Twin Oak
S.W. Cor. West County Line & Lakeview Drive
Elev. 911.99

B.M. S.T.H. No. 10 & West Co. Line Pavement
Elev. 913.98



ESTIMATED QUANTITIES

Excavation	Cu. Yds.	275.3
Clearing	Trees	93
Grubbing	Trees	93
Culverts	18" C.M. Lin. Ft.	96
	15" C.M. Lin. Ft.	40
Remove Fence	Lin. Ft.	1900
Reset Fence	Lin. Ft.	1700

OFFICE OF
 RAMSEY COUNTY SURVEYOR
 HARRY S. BRONSON
 GRADING PLAN
 FROM LAKEVIEW DRIVE TO S.T.H. 10
 FEB. 1949 SCALE AS SHOWN
 APPROVED COUNTY ENGINEER

Sheet 1 of 3 Sheets

NO.	DATE
1	1949
2	1949
3	1949
4	1949
5	1949
6	1949
7	1949
8	1949
9	1949
10	1949

DATE	BY
1949	BB
1949	BB
1949	BB
1949	BB
1949	BB
1949	BB
1949	BB
1949	BB
1949	BB
1949	BB