

Sta. 0+26 Rf. 48.5' To
Sta. 0+62 Lt. 18.5'
Inp. 110' Part 15" Vit. & 15" C.M.

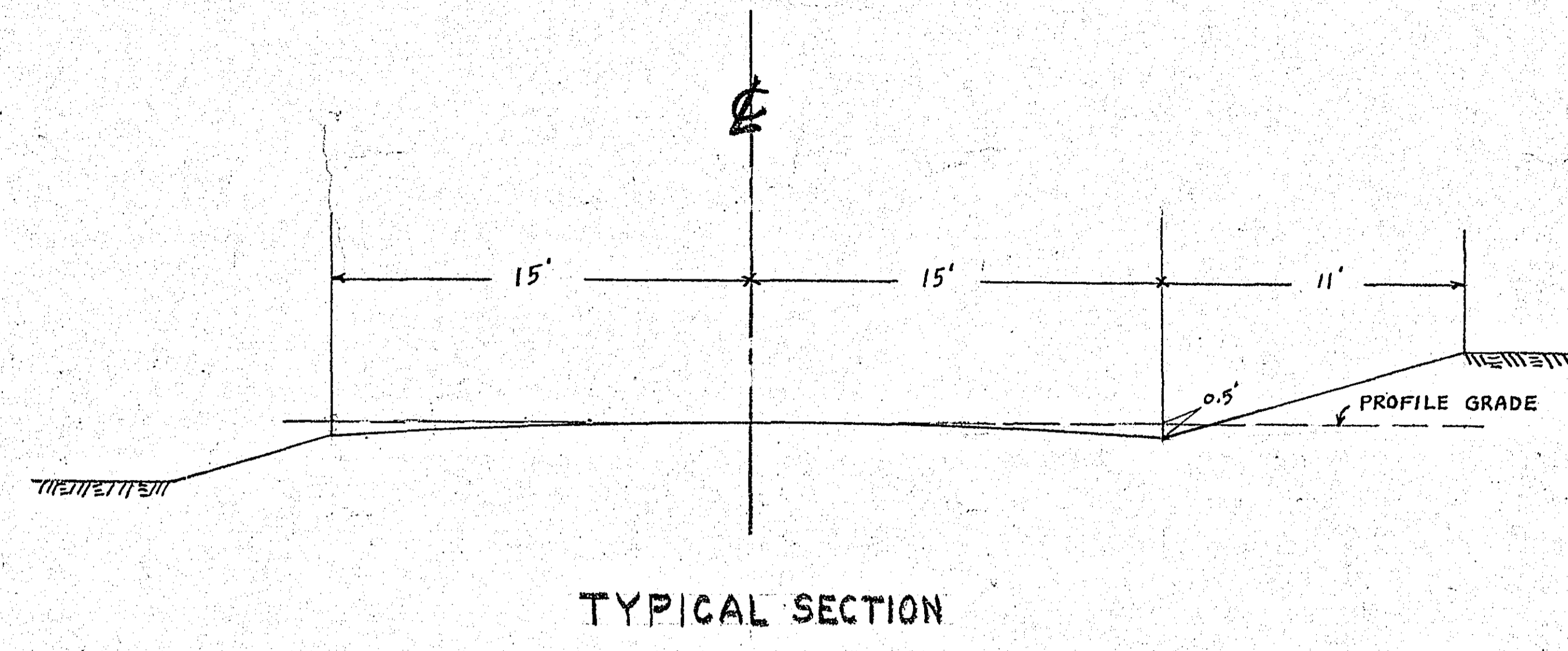
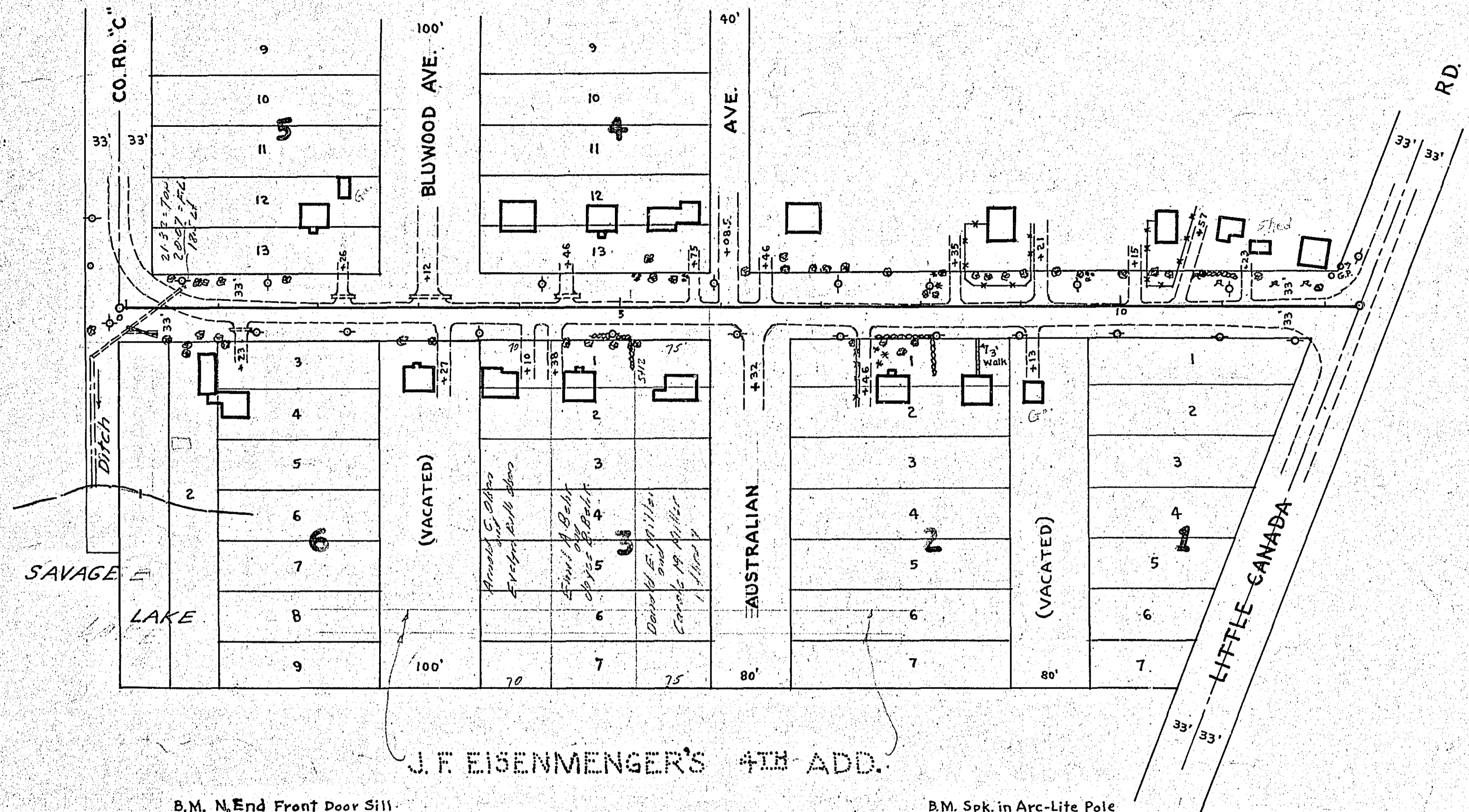
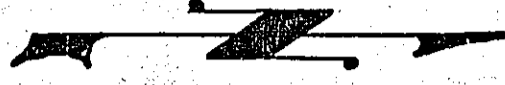
Sta. 0+39 Rf. 23.5'
N. End 10" Vit.

Sta. 1+23 Rf. 22'
Inp. 12" x 20' C.M.

Sta. 2+26 Lt. 10'
Inp. 15" x 20' C.M.

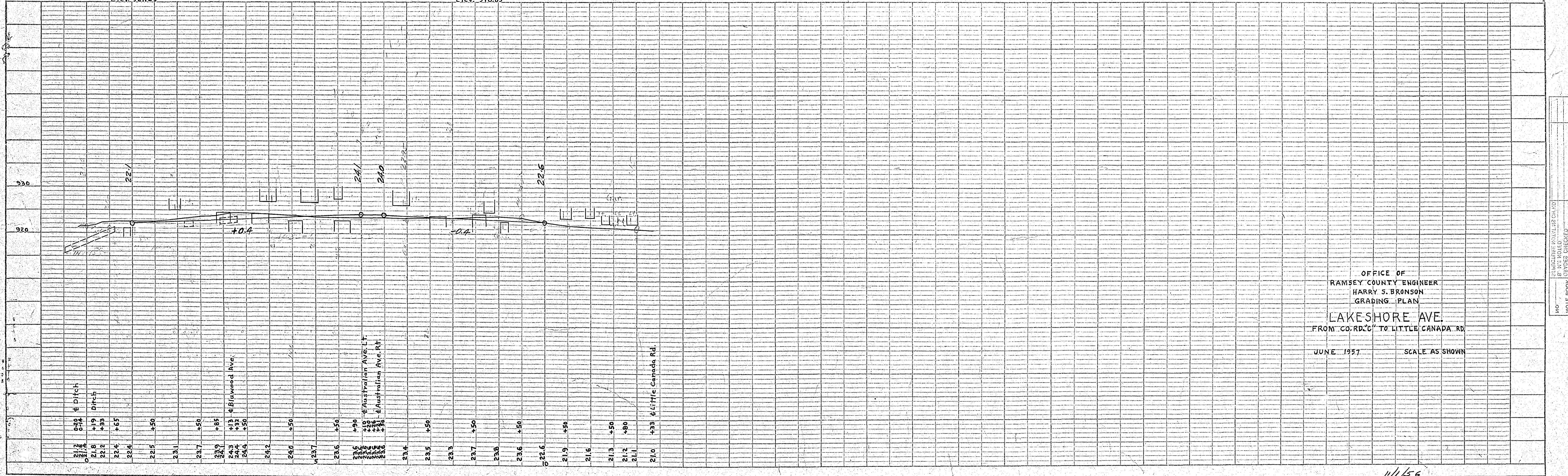
Sta. 3+12 Lt. 10'
Inp. 15" x 40' C.M.

Sta. 4+46 Lt. 9'
Inp. 15" x 20' C.M.



B.M. N. End Front Door Sill
No. 2665 Lake Shore Ave.
Elev. 927.63

B.M. Spk. in Arc-Lite Pole
N. E. Cor. Little Canada Rd. & Lake Shore Ave.
Elev. 918.85



OFFICE OF
RAMSEY COUNTY ENGINEER
HARRY S. BRONSON
GRADING PLAN
LAKESHORE AVE
FROM CO. RD. C TO LITTLE CANADA RD.
JUNE 1957 SCALE AS SHOWN

NO. 1101
BY: H.S. BRONSON
CHECKED: H.S. BRONSON
DATE: 6/1/57

NO. 1101
BY: H.S. BRONSON
CHECKED: H.S. BRONSON
DATE: 6/1/57