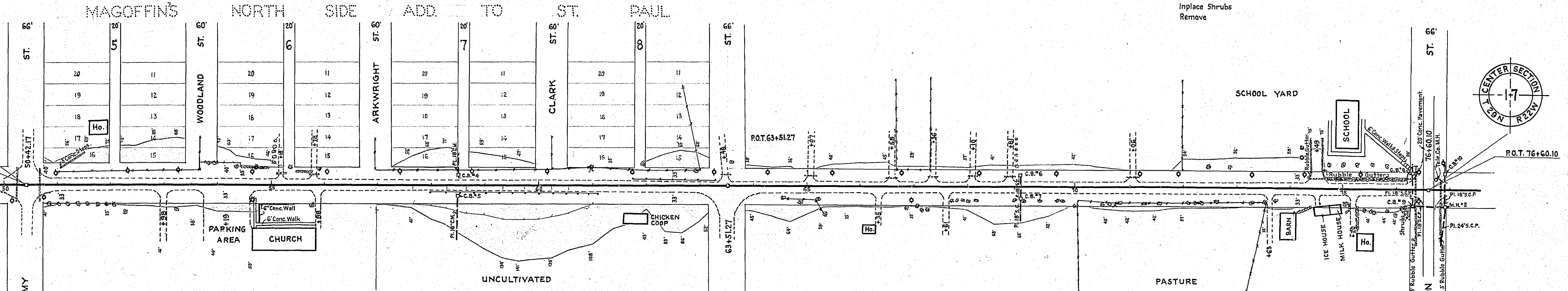


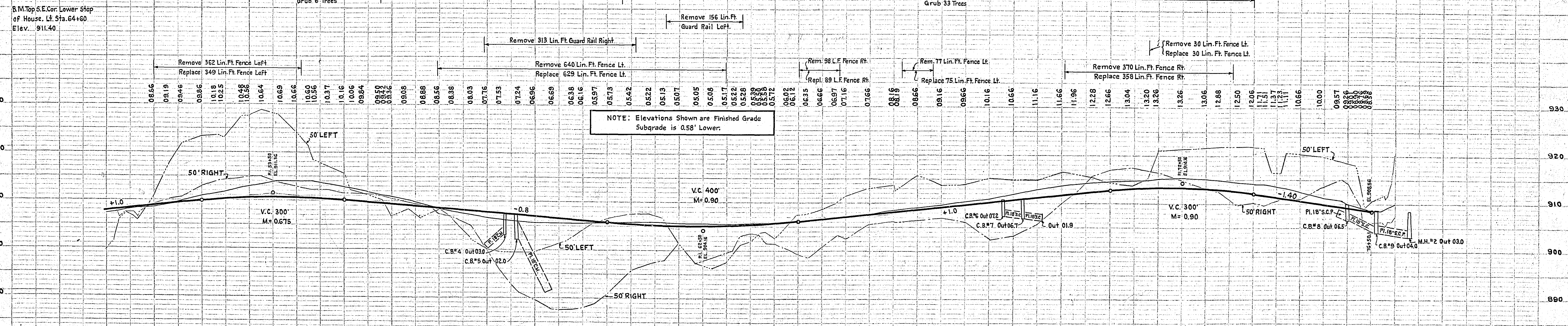
54+33 Lt. 33' to Sta. 54+98 Lt. 33' Inplace Hedge. Remove
 55+18 Lt. Inp. 12x20' C.M. Remove
 55+78 Lt. Inp. 12x20' C.M. Remove
 63+48 Lt. Inp. 15x26' S.C.P. Remove & Replace
 65+07 Lt. Inp. 15x20' C.M. Remove
 66+58 Lt. Inp. 15x20' C.M. Remove
 67+36 Lt. Inp. 15x20' C.M. Remove
 68+10 Lt. Inp. 15x20' C.M. Remove
 68+81 Lt. Inp. 15x20' C.M. Remove
 71+06 Lt. Inp. 18x18' C.M. Remove
 71+06 Lt. Haul to Sta. 58+50 Rt.
 74+49 Lt. Inp. 15x32' C.M. Remove
 76+19 Lt. 20' to 76+37 Lt. 20' Inp. 18x18' C.M. Remove
 76+37 Lt. Inp. 18x61.5' C.M. Remove
 76+41 Lt. 11' Inp. Tele. M.H. Adjust Ring Casing Work to be done by others.
 76+83 Lt. Inp. 18x46' C.M. Remove
 76+94 Rt. 22' to 76+94 Rt. 22' Inp. 12x12' C.M. Remove

Sta. 74+95 Rt. 25' to Sta. 75+12 Rt. 33' Inp. Hedge Remove
 Sta. 76+06 Rt. 31' to 38' to Sta. 76+25 Rt. 29' to 38' Rt. Inplace Shrubs Remove



Sta. 51+05 Lt. 37' to Sta. 51+50 Lt. 50' Remove 3 Cu. Yds. Conc. Steps.
 Sta. 51+05 Lt. 30' to Sta. 51+50 Lt. 50' Place 3 Cu. Yds. Conc. Steps.
 Sta. 54+72 Rt. 26' to 50' Rt. Remove 16 Sq. Yds. Conc. Sidewalk
 Sta. 54+72 Rt. 26' to 50' Rt. Place 144 Sq. Ft. Conc. Sidewalk.
 Sta. 58+50 Lt. 21' to 61' Lt. Relay 18x42' C.M. Haul From Sta. 24+19 Rt. Trench Exc. 0' to 6' Deep 40 Lin. Ft. Sodding 6 Sq. Yds.
 Sta. 58+50 Rt. 21' to 100' Rt. Relay 18x61' C.M. Haul From Sta. 11+83 Lt. Relay 18x18' C.M. Haul From Sta. 71+06 Lt. Trench Exc. 0' to 6' Deep 80 Lin. Ft. Sodding 5 Sq. Yds.
 Sta. 58+50 Lt. 21' Const. Catch Basin #4 - 1 Cu. Yd. Exc. For Catch Basin 0 Cu. Yds.
 Sta. 58+50 Rt. 21' Const. Catch Basin #5 - 1 Cu. Yd. Exc. For Catch Basin 0 Cu. Yds.
 Sta. 69+00 Lt. 20' to Rt. 20' Furn. & Inst. 18x40' S.C. Culv. Trench Exc. 0' to 6' Deep 40 Lin. Ft.
 Sta. 69+00 Rt. 21' to 61' Rt. Furn. & Inst. 18x40' S.C. Culv. Trench Exc. 0' to 6' Deep 40 Lin. Ft. Sodding 6 Sq. Yds.
 Sta. 69+00 Lt. 21' Const. Catch Basin #6 1 Cu. Yd. Exc. For Catch Basin 5 Cu. Yds.
 Sta. 69+00 Rt. 21' Const. Catch Basin #7 1 Cu. Yd. Exc. For Catch Basin 1 Cu. Yd.
 Sta. 76+30 Lt. 30' to Rt. 30' Furn. & Inst. 18x60' S.C. Culv. Trench Exc. 0' to 6' Deep 60 Lin. Ft.
 Sta. 76+30 Lt. 32' to 52' Lt. Furn. & Inst. 18x20' S.C. Culv. Trench Exc. 0' to 6' Deep 20 Lin. Ft. Sodding 6 Sq. Yds.
 Sta. 76+30 Lt. 31' Const. Catch Basin #8 1 Cu. Yd. Exc. For Catch Basin 3.5 Cu. Yds.
 Sta. 76+30 Rt. 31' Const. Catch Basin #9 1 Cu. Yd. Exc. For Catch Basin 2.5 Cu. Yds.
 Sta. 76+90 Lt. 31' to Sta. 76+90 Rt. 34' Furn. & Inst. 18x60' S.C. Culv. Trench Exc. 0' to 6' Deep 60 Lin. Ft.
 Sta. 76+90 Lt. 30' to Rt. 34' Furn. & Inst. 18x64' S.C. Culv. Trench Exc. 0' to 6' Deep 64 Lin. Ft. Sodding 6 Sq. Yds.
 Sta. 76+90 Lt. 32' to 52' Lt. Furn. & Inst. 18x20' S.C. Culv. Trench Exc. 0' to 6' Deep 20 Lin. Ft. Sodding 5 Sq. Yds.
 Sta. 76+90 Lt. 31' Const. Catch Basin #10 1 Cu. Yd. Exc. For Catch Basin 7.5 Cu. Yds.
 Sta. 76+90 Rt. 34' Const. Manhole #2 2.8 Cu. Yds. Exc. For Manhole 6 Cu. Yds.

B.M. Top of Monument at M.E. Menemy St. & Co. Rd. A Elev. 908.09
 B.M. Top S.E. Cor. Lower Step of House. Lt. Sta. 64+60 Elev. 911.40
 B.M. Spk. in P.P. S.W. Cor. Edgerton St. & Co. Rd. A Elev. 909.06



NOTE: Elevations Shown are Finished Grade Subgrade is 0.58' Lower.

Exc. 113,153 Cu. Yds. Emb. 9,234 Cu. Yds. Waste 1065 Cu. Yds. As directed by the Engineer. 12,088 Cu. Yds.
 Exc. 8,290 Cu. Yds. Emb. 5,572 Cu. Yds. Waste 1093 Cu. Yds. As directed by the Engineer. 7197 Cu. Yds.

PLAN APPROVED: DATE: BY: CHECKED: DATE: BY: NOTE BOOK ALIGNMENT CHECKED BY: CONTRACT NO. STRUCTURE NO. DRAWING NO.

PROFILE APPROVED: DATE: BY: CHECKED: DATE: BY: NOTE BOOK ALIGNMENT CHECKED BY: CONTRACT NO. STRUCTURE NO. DRAWING NO.

25+93 Lt.
No Culv. Req'd.

38+11 E
Imp. 24"x72" S.C.
Remove & Relay
Furn. & Install 24"x66" S.C. Culv.
Sodding 14 Sq. Yds.

42+82 E
Imp. 24"x89" Conc. P.
Remove & Relay
Furn. & Install 24"x84" S.C. Culv.
Sodding 14 Sq. Yds.

50+18 E
Relay 18"x46" S.C. Culv. (Obtain from 50+23 E)
Furn. & Inst. 18"x8' S.C. Culv.
Sodding 11 Sq. Yds.
Hand Ditching 15 Cu. Yds.

50+23 E
Imp. 18"x46" S.C. Culv.
Imp. 18"x12" C.M.
Remove
Use 18"x46" S.C. Culv. at 50+18 E

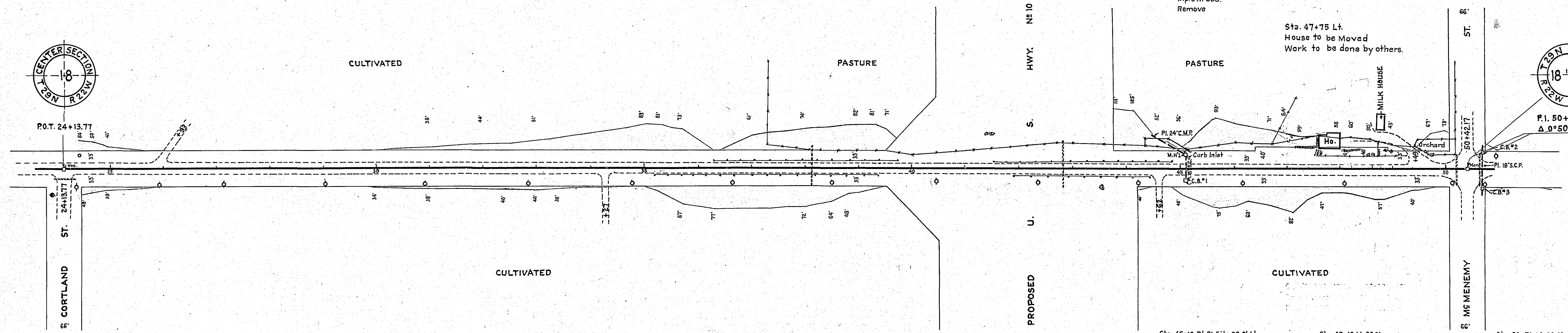
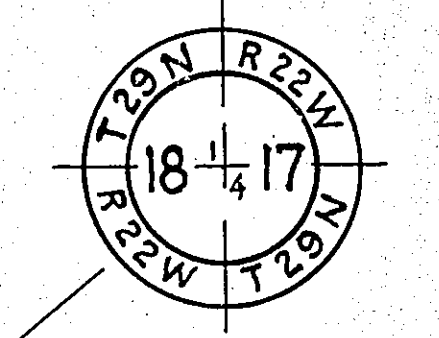
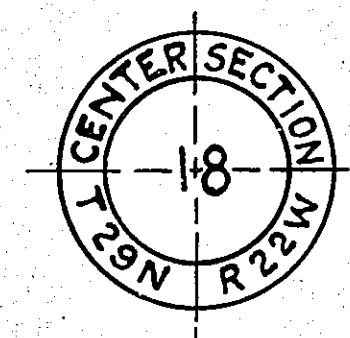
50+65 E
Imp. 18"x60" C.M.
Remove

50+71 E
Furn. & Inst. 18"x90" S.C. Culv.
Sodding 11 Sq. Yds.

47+15 40' Lt. to Sta. 47+36-36' Lt.
Imp. Hedge
Remove

Sta. 47+53 Lt. 24' to 37' to Sta. 47+66 Lt. 24' to 37'
Imp. Shrubs.
Remove

Sta. 47+75 Lt.
House to be Moved
Work to be done by others.



Sta. 45+10 Rt. 21.5' to 23.0' Lt.
Furn. & Inst. 18"x44.5' S.C. Culv.
Trench Exc. 0' to 6' Deep 44.5' Lin. Ft.

Sta. 45+10 Lt. 23.0'
Const. Manhole #1 2.9 Cu. Yds.
Exc. For Manhole 12.0 Cu. Yds.

Sta. 50+71 Lt. 32.0'
Const. Catch Basin #2 1 Cu. Yd.
Exc. For Catch Basin 2.0 Cu. Yds.

Sta. 45+10 Lt. 19.0' to 22.0' Lt.
Furn. & Inst. 18"x30' S.C. Culv.
From Curb Inlet to M.H. #1
Trench Exc. 0' to 6' Deep 3.0 Lin. Ft.

Sta. 45+10 Rt. 21.5'
Const. Catch Basin #1 1 Cu. Yd.
Exc. For Catch Basin 3 Cu. Yds.

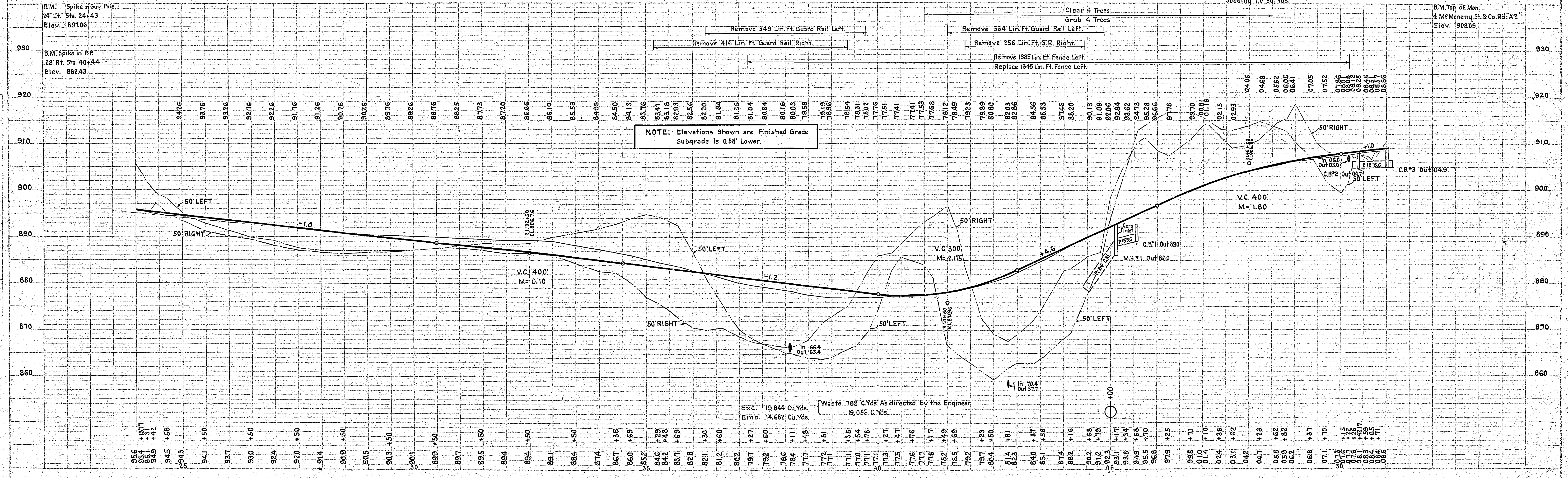
Sta. 50+71 Rt. 32.0'
Const. Catch Basin #3 1 Cu. Yd.
Exc. For Catch Basin 3.0 Cu. Yds.

Sta. 44+50 Lt. 60' to Sta. 45+10 Lt. 23'
Relay 24"x34" C.M. Haul From Sta. 18+18 E
Relay 24"x36" C.M. Haul From Sta. 17+95 Lt. to Sta. 18+18 E
Trench Exc. 0' to 6' Deep 70.0 Lin. Ft.
Sodding 7.0 Sq. Yds.

B.M. Top of Mon.
& M.S. Menemy St. & Co. Rd. A'E
Elev. 908.09

PLAN	DATE
DESIGNED BY	
CHECKED BY	
DATE	

PROFILE	DATE
DESIGNED BY	
CHECKED BY	
DATE	



Exc. 10,844 Cu. Yds.
Emb. 14,682 Cu. Yds.
Waste 788 Cu. Yds. As directed by the Engineer.
19,056 Cu. Yds.

A-6505

CONVENTIONAL SIGNS & ABBREVIATIONS

STATE LINE.....	EXCAVATION.....	F
COUNTY LINE.....	EMBANKMENT.....	F
TOWNSHIP LINE.....	OVERHAUL.....	H
SECTION LINE.....	SURFACING.....	S
CITY, VILLAGE, OR BOROUGH.....	GUARD RAIL.....	GR
FENCE LINE.....	INTERSECTION ANGLE.....	A
RIGHT-OF-WAY LINE.....	RADIUS.....	R
TRAVELLED WAY.....	ELEVATION.....	EI
RAILROADS.....	VERTICAL CURVE.....	VC
RETAINING WALL.....	BENCH MARK.....	B.M.
BASE OR SURVEY LINE.....	SECTIONAL CONCRETE CULVERT.....	P.I.
LEVEE.....	CORRUGATED METAL CULVERT.....	C.M.
GRAVEL PIT.....	CULVERT HAUL.....	P.L.H.
SAND PIT.....	TON MILES.....	T.M.
CLAY PIT.....	PLACE.....	P
ROCK QUARRY.....	IN PLACE.....	Imp.
CULVERTS.....	REPLACE.....	Rep.
PLAIN.....	RIGHT.....	R
WITH FACEWALLS.....	LEFT.....	L
WITH WINGWALLS.....	HAND DITCHING.....	H.D.
DROP INLET.....	POINT OF CURVE.....	P.C.
POWER POLE LINE.....	POINT OF TANGENT.....	P.T.
TELEPHONE OR TELEGRAPH LINE.....	POINT OF INTERSECTION.....	P.I.
MARSH.....	SPECIAL EXCAVATION.....	S.E.
HEDGE, BRUSH, OR TIMBER.....	SPECIAL FLOWING.....	S.P.
GROUND ELEVATION.....	TELEPHONE POLE.....	Tel.P.
GRADE ELEVATION.....		

OFFICE OF COUNTY SURVEYOR RAMSEY COUNTY Construction Plan of County Project No.

From A point 10.5 Feet East of the West 1/4 Cor.Sec.18-T29N-R22W. To A point 12.12 Feet West of the East 1/4 Cor.Sec.17-29N-R22W.

GROSS LENGTH 10,257.3 FEET 1.943 MILES
LENGTH OF EXCEPTIONS 124.1 FEET 0.0235 MILES
NET LENGTH 10,133.2 FEET 1.919 MILES

PLAN, 1 Inch = 100 Feet
PROFILE, Horz. 1 Inch = 100 Feet. Vert. 1 Inch = 10 Feet
WORKING PLANS { Horz. 1 Inch = 100 Feet
Vert. 1 Inch = 10 Feet
Cross-Sections, 1 Inch = 10 Feet

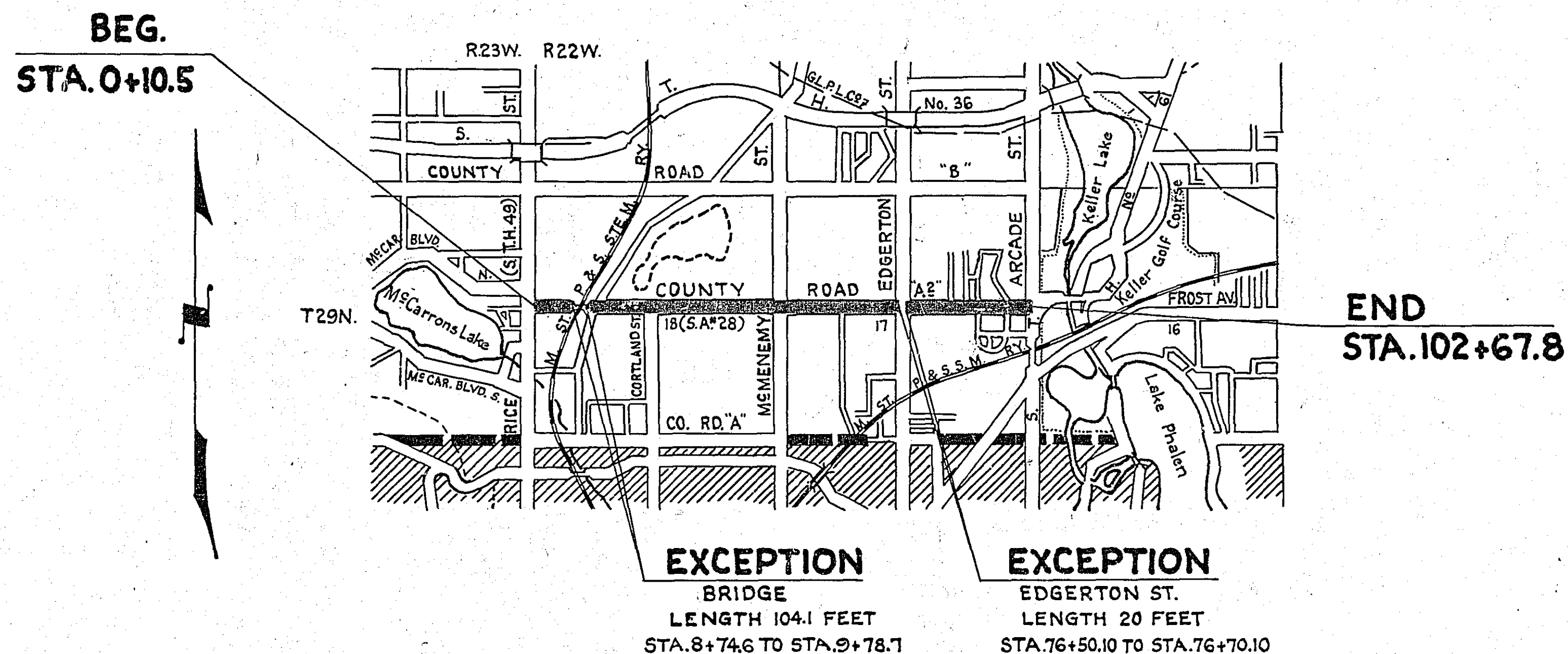
LAYOUT
SCALE, 1 Inch = 2640 Feet

SPECIFICATIONS

NOTE: The Minnesota Highway Department Specifications For Highway Construction dated July 1, 1938 and Supplement No. 3 approved by the Public Roads Administration Nov. 15, 1939 as modified by Supplement No. 4 dated March 1, 1940 and approved by the Public Roads Administration April 28, 1941, shall govern.

INDEX OF SHEETS

Sheet No. 1	Title Sheet
2	Estimate and Grading Details
3	Paving and Miscellaneous Details
4-6	Panel Layout Sheets
7-10	Plan Sheets
11-28	Cross Section Sheets



Planned By A. D. Crampton 3/14 1945
ASST. CIVIL ENGINEER

Approved Harry S. Brown 1945
COUNTY SURVEYOR

Approved Swigo 1945
VICE CHAIRMAN RAMSEY COUNTY BOARD

Recommended for Approval H. E. Elrod 9-17 1945
DISTRICT ENGINEER

Recommended for Approval R. M. Edwards 9-26 1945
ENGINEER OF COUNTY DIVISION

Approved T. J. Johnson 9/28 1945
ENGINEER OF SURVEYS & DESIGN

RECOMMENDED FOR APPROVAL

[Signature Box]
DISTRICT ENGINEER
 PUBLIC ROADS ADMINISTRATION
 FEDERAL WORKS AGENCY

APPROVED

[Signature Box]
COMMISSIONER
 PUBLIC ROADS ADMINISTRATION
 FEDERAL WORKS AGENCY