

CONVENTIONAL SIGNS & ABBREVIATIONS

STATE LINE	-----	EXCAVATION	F
COUNTY LINE	-----	EMBANKMENT	F
TOWNSHIP LINE	-----	OVERHAUL	H
SECTION LINE	-----	SURFACING	S
CITY, VILLAGE, OR BOROUGH	-----	GUARD RAIL	GR
FENCE LINE	-----	INTERSECTION ANGLE	A
RIGHT-OF-WAY LINE	-----	RADIUS	R
TRAVELLED WAY	-----	ELEVATION	EI
RAILROADS	-----	VERTICAL CURVE	VC
RETAINING WALL	-----	BENCH MARK	B.M.
BASE OR SURVEY LINE	-----	SECTIONAL CONCRETE CULVERT	P.L.
LEVEE	-----	CORRUGATED METAL CULVERT	C.M.
GRAVEL PIT	CULVERT HAUL	P.L.H.
SAND PIT	TOW MILES	T.M.
CLAY PIT	IN PLACE	P
ROCK QUARRY	REPLACE	Rep
CULVERTS	RIGHT	R
PLAIN	LEFT	L
WITH FACEWALLS	HAND DITCHING	H.D.
WITH WINGWALLS	POINT OF CURVE	P.C.
DROP INLET	POINT OF TANGENT	P.T.
POWER POLE LINE	POINT OF INTERSECTION	P.I.
TELEPHONE OR TELEGRAPH LINE	SPECIAL EXCAVATION	SE
MARSH	SPECIAL FLOWING	S.P.
HEDGE, BRUSH, OR TIMBER	TELEPHONE POLE	TEL.P.
GROUND ELEVATION			
GRADE ELEVATION			

OFFICE OF COUNTY SURVEYOR RAMSEY COUNTY

Construction Plan of County Project No.

From a point 93.25' East of the N.W. Cor. Sec. 9-T29N-R22W. To a point 1253.30' East of N 1/4 Cor. Sec. 9-T29N-R22W.

GROSS LENGTH 3817.85 FEET 0.7230 MILES
 LENGTH OF EXCEPTIONS 0 FEET 0 MILES
 NET LENGTH 3817.85 FEET 0.7230 MILES
 PLAN, 1 Inch = 100 Feet
 PROFILE, Horiz. 1 Inch = 100 Feet. Vert. 1 Inch = 10 Feet
 WORKING PLANS { Horiz. 1 Inch = 100 Feet
 Vert. 1 Inch = 10 Feet
 Cross-Sections, 1 Inch = 10 Feet

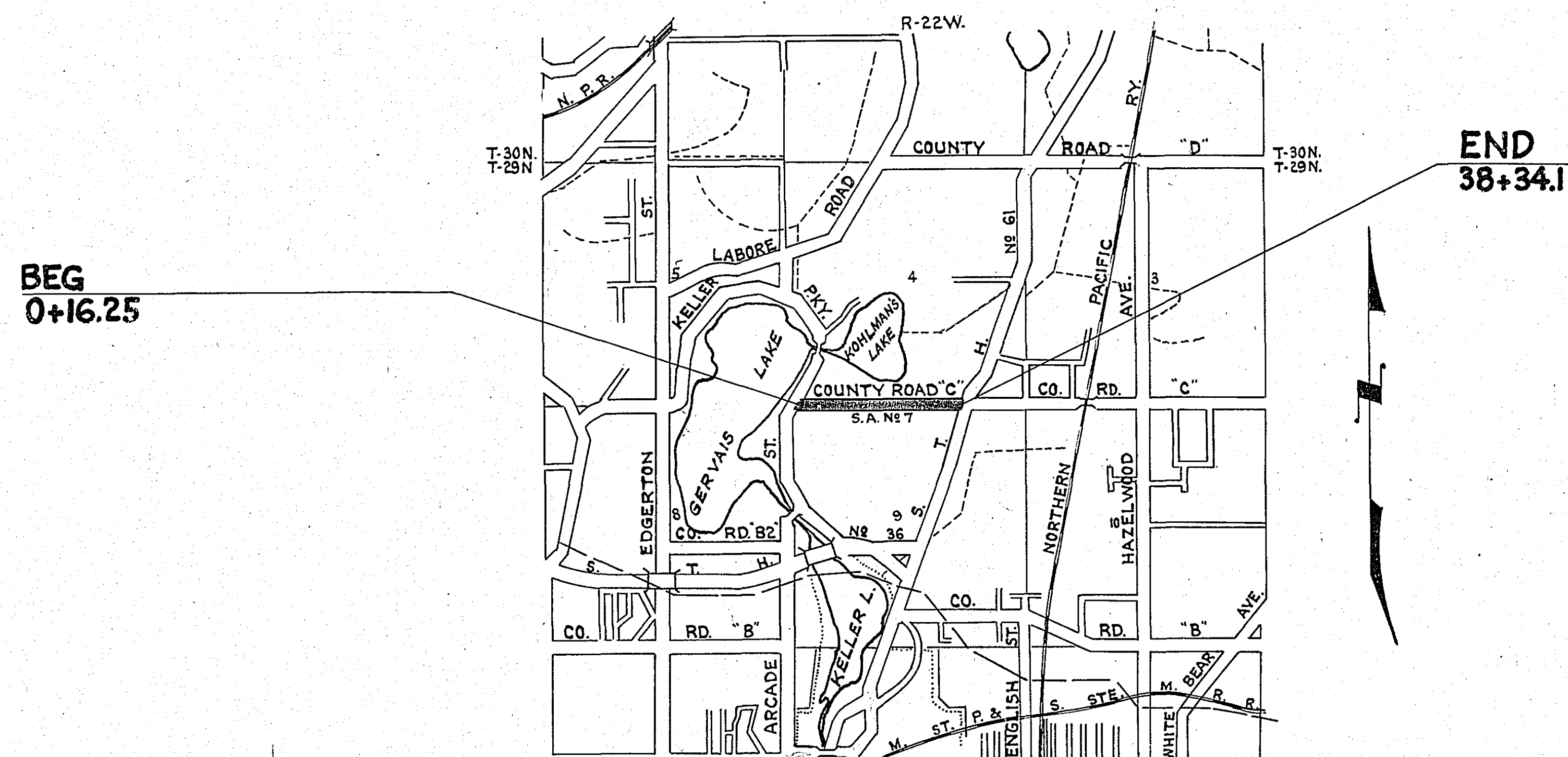
LAYOUT
SCALE, 1 Inch = 2640 Feet

SPECIFICATIONS

NOTE: The Specifications For Highway Construction dated July 1, 1938 and Supplement No. 3 approved by the Public Roads Administration Nov. 15, 1939 as modified by Supplement No. 4 dated March 1, 1940 and approved by the Public Roads Administration April 28, 1941, shall govern.

INDEX OF SHEETS

Sheet No. 1. Title Sheet
 " No. 2. Estimate, Grading & Paving Details.
 " No. 3. Paving & Miscellaneous Details.
 " No. 4a5 Panel Layout Sheets.
 " " 6a7 Plan Sheets.
 " " 8 to 15 Cross Sections.



Planned By A. D. Crampton May 28 1945
ASST. CIVIL ENGINEER

Approved Harry S. Bronson May 28 1945
COUNTY SURVEYOR

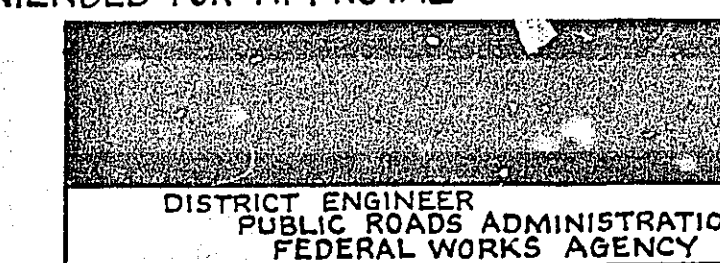
Approved John J. Vinton May 28 1945
CHAIRMAN RAMSEY COUNTY BOARD

Recommended for Approval J. E. Clark 9-17 1945
DISTRICT ENGINEER

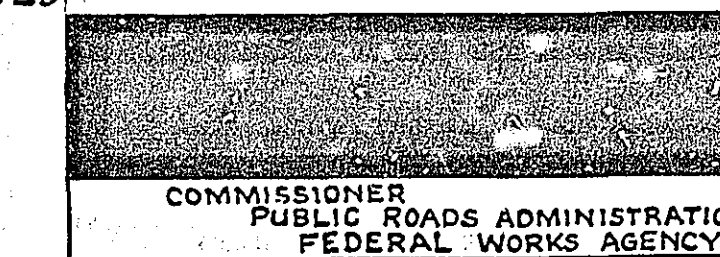
Recommended for Approval S. M. Evans 9-24 1945
ENGINEER OF COUNTY DIVISION

Approved T. F. Decker 9-28 1945
ENGINEER OF SURVEYS & DESIGN

RECOMMENDED FOR APPROVAL



APPROVED



Sta. 3+37 Lt. 10' to Sta. 3+69 Lt. 22'
Inp. 15x26" C.M.
Inp. 18x8" S.C.P.
Remove. No Culvert Required.

Sta. 6+16 Lt.
Inp. 24x38" C.M.
Remove
Furn. & Inst. 24x86" C.M.
Pl. 2 Metal Aprons
Sodding 14 Sq. Yds.
Furn. & Inst. 1032 F.B.M. (2x8x6) Timber Cradle.

Sta. 8+56 Rt.
Furn. & Inst. 15x20" C.M.
Pl. 2 Metal Aprons
Sodding 11 Sq. Yds.

Sta. 10+37 Rt.
Furn. & Inst. 15x20" C.M.
Pl. 2 Metal Aprons
Sodding 11 Sq. Yds.

Sta. 11+17 Rt.
No Culv. Required.

Sta. 13+10 Rt. 33' to Sta. 14+76 Rt. 28'
Inp. 12x168" Metal Pipe
O.K. Leave

Sta. 14+76 Rt. 28' to Sta. 14+76 Rt. 42'
Furn. & Inst. 24x70" S.C.P.
Pl. 1 Flared End
Sodding 7 Sq. Yds.

Sta. 13+65 Rt.
No Culv. Required.

Sta. 13+96 Lt.
No Culv. Reqd.

Sta. 14+76 Rt. 28'
Const. Manhole #1
Exc. For M.H.
Ring Casting #70T
Grate Casting #722

Sta. 15+40 Rt.
No Culv. Reqd.

Sta. 15+90 Lt.
No Culv. Reqd.

Sta. 16+23 Lt. 14.5' to 19.5 Lt. & 22.5' Lt. to 52' Lt.
Remove 15 Sq. Yds. Conc. Sidewalk
Const. 80 Sq. Ft. Conc. Sidewalk

Sta. 16+23 Lt. 19.5' to 22.5' Lt.
Remove 0.5 Cu. Yd. Conc. Steps.

Sta. 15+96 Lt. 22' to 40' Lt.
Remove Conc. Wall 1 Cu. Yd.

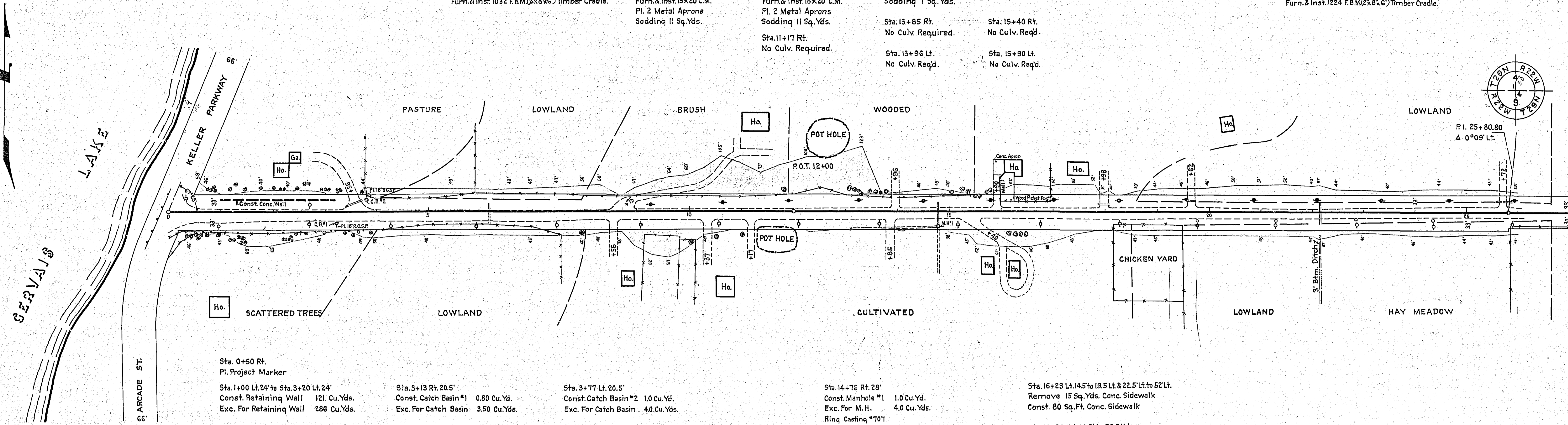
Sta. 17+98 Lt.
Inp. 12x20" C.M.
Remove
Furn. & Inst. 15x20" C.M.
Pl. 2 Metal Aprons.
Sodding 11 Sq. Yds.

Sta. 19+62 Lt.
Inp. 12x26" C.M.
Remove
Furn. & Inst. 15x36" C.M.
Pl. 2 Metal Aprons
Sodding 11 Sq. Yds.

Sta. 22+12 Lt.
Inp. 30x42" C.M.
Remove
Furn. & Inst. 30x102" C.M.
Pl. 2 Metal Aprons.
Sodding 18 Sq. Yds.
Furn. & Inst. 1224 F.B.M. (2x8x6) Timber Cradle.

Sta. 25+72 Lt.
Inp. 12x26" C.M.
Remove
Furn. & Inst. 15x36" C.M.
Pl. 2 Metal Aprons.
Sodding 11 Sq. Yds.

PLAN
SURVEYED
PLOTTED
ROUTE BENCH ALIGNMENT CHECKED
RT. OF WAY CHECKED
NO.



Sta. 0+50 Rt.
Pl. Project Marker

Sta. 1+00 Lt. 24' to Sta. 3+20 Lt. 24'
Const. Retaining Wall 121 Cu. Yds.
Exc. For Retaining Wall 286 Cu. Yds.

Sta. 3+13 Rt. 20.5'
Const. Catch Basin #1 0.80 Cu. Yd.
Exc. For Catch Basin 3.50 Cu. Yds.

Sta. 3+13 Rt. 20.5' to 28.5' Rt.
Furn. & Inst. 18x8" Rein. Conc. Sewer Pipe
Trench Exc. 0' to 6' Deep 8 Lin. Ft.
Pl. 1 Flared End
Sodding 6 Sq. Yds.

Sta. 3+77 Lt. 20.5' to 44.5' Lt.
Furn. & Inst. 18x24" Rein. Conc. Sew. Pipe
Trench Exc. 0' to 6' Deep 24 Lin. Ft.
Pl. 1 Flared End
Sodding 6 Sq. Yds.

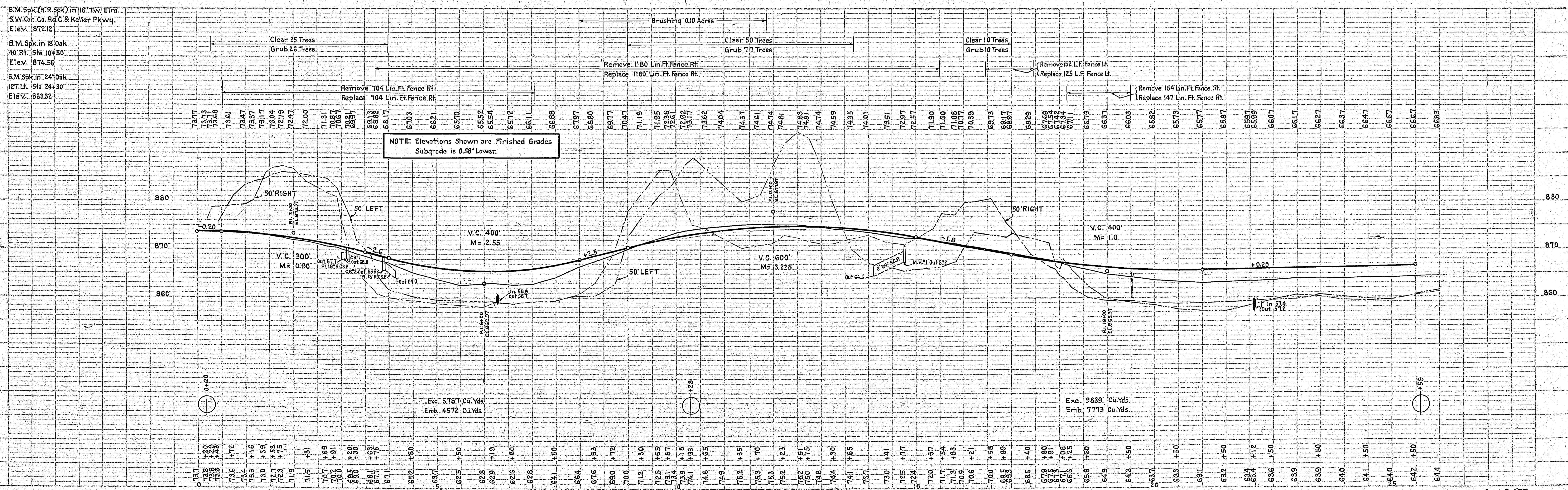
Sta. 14+76 Rt. 28'
Const. Manhole #1 1.0 Cu. Yd.
Exc. For M.H. 4.0 Cu. Yds.
Ring Casting #70T
Grate Casting #722

Sta. 16+23 Lt. 14.5' to 19.5 Lt. & 22.5' Lt. to 52' Lt.
Remove 15 Sq. Yds. Conc. Sidewalk
Const. 80 Sq. Ft. Conc. Sidewalk

Sta. 16+23 Lt. 19.5' to 22.5' Lt.
Remove 0.5 Cu. Yd. Conc. Steps.

Sta. 15+96 Lt. 22' to 40' Lt.
Remove Conc. Wall 1 Cu. Yd.

PROFILE
SURVEYED
PLOTTED
NOTE: GRADES CHECKED
STRUCTURE CHECKED
NO.



Sta. 28+03 Lt. Furn. & Inst. 15x20' C.M. Pl. 2 Metal Aprons Sodding 11 Sq. Yds.

Sta. 31+19 Lt. Furn. & Inst. 15x20' C.M. Pl. 2 Metal Aprons Sodding 11 Sq. Yds.

Sta. 31+55 Rt. Inp. 12x20' C.M. Remove Furn. & Inst. 15x20' C.M. Pl. 2 Metal Aprons Sodding 11 Sq. Yds.

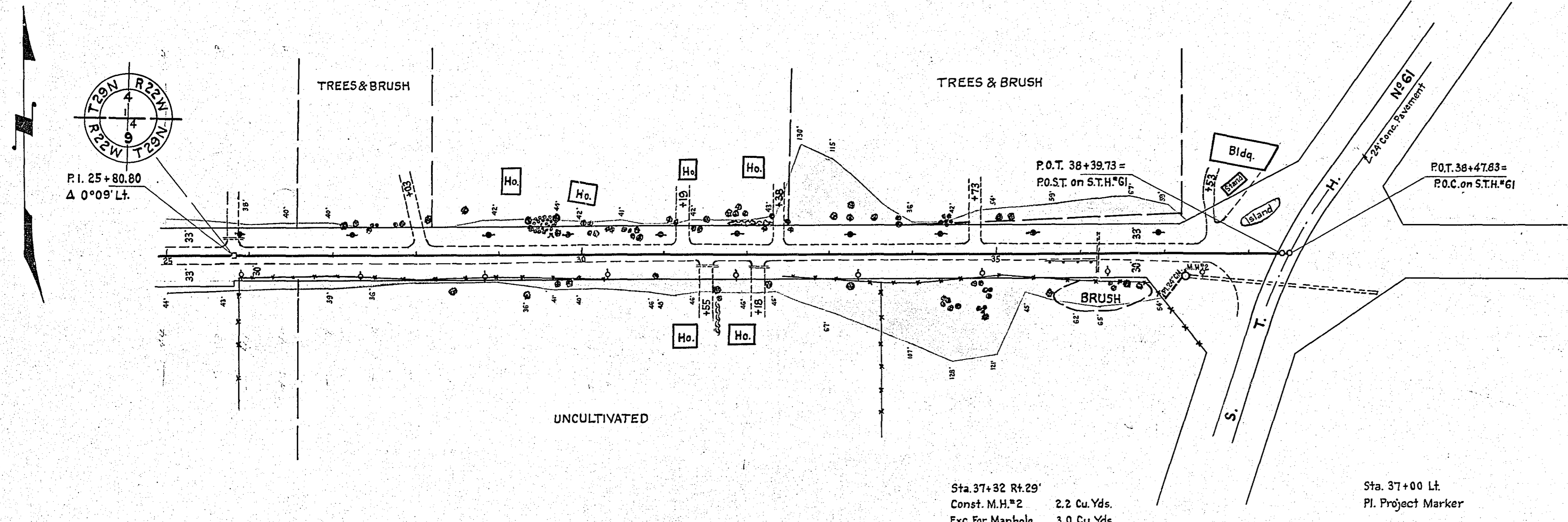
Sta. 32+18 Rt. Inp. 12x20' C.M. Remove Furn. & Inst. 15x20' C.M. Pl. 2 Metal Aprons Sodding 11 Sq. Yds.

Sta. 32+38 Lt. Furn. & Inst. 15x20' C.M. Pl. 2 Metal Aprons Sodding 11 Sq. Yds.

Sta. 36+21 E. Inp. 18x46' C.M. Remove Furn. & Inst. 24x128' S.C.P. Pl. 2 Flared Ends. Sodding 14 Sq. Yds.

Sta. 37+32 29 Rt. to Sta. 39+54 Rt. 47' Inp. 24x225' C.M. O.K. Leave Sta. 37+00 Rt. 54' to M.H.#2 Furn. & Inst. 24x44' C.M. Pl. 1 Metal Apron Sodding 7 Sq. Yds.

Sta. 37+53 Lt. Furn. & Inst. 15x20' C.M. Pl. 2 Metal Aprons Sodding 11 Sq. Yds.



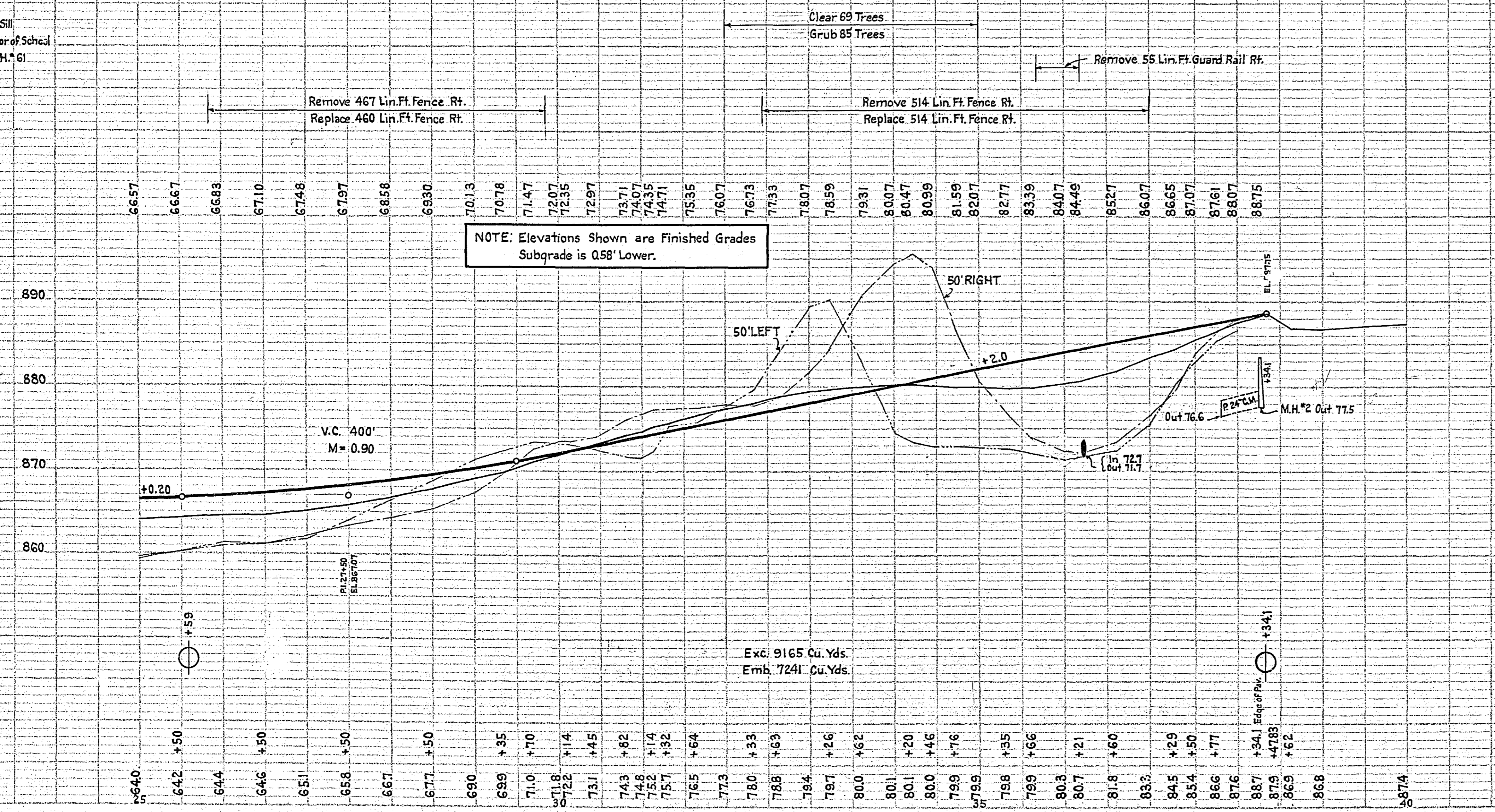
PLAN	SUPPLIED	DATE
NOTE BOOK	PLOTTED	
	CHECKED	
	BY	

Sta. 37+32 Rt. 29' Const. M.H.#2 2.2 Cu. Yds. Exc. For Manhole 3.0 Cu. Yds.

Sta. 37+00 Lt. Pl. Project Marker

B.M. Spk. in 24' Oak 127' Lt. Sta. 24+30 Elev. 863.32

B.M. Top of Metal Door Sill Near Hh. End of West Door of School N.E. Cor. Co. Rd. C & S.T.H.#61 Elev. 890.37



PROFILE	SUPPLIED	DATE
NOTE BOOK	PLOTTED	
	CHECKED	
	BY	

6504