

Sta. 0+31 Lt. 50.0' to Sta. 0+70 Lt. 30.0'
Pl. 18"x42.0" S.C. Culv. to C.B. Sodding 6 Sq.Yds.

Sta. 0+31 Rt. 55.0' to Sta. 0+70 Rt. 30.0'
Pl. 18"x42.0" S.C. Culv. to M.H. Sodding 6 Sq.Yds.

4+90 Lt. Pl. 15"x20" C.M. Sodding 11 Sq.Yds.

6+83 Lt. 10' Inp. Tele. M.H. Adjust Ring Work to be done by others

7+98 Lt. Inp. 12"x20" C.M. Rem. Pl. 15"x20" C.M. Sodding 11 Sq.Yds.

8+57 Lt. Inp. 12"x17" C.M. Rem. Pl. 15"x20" C.M. Sodding 11 Sq.Yds.

13+50 Lt. 11.5' Inp. Tele. M.H. Adjust Ring Casting Work to be done by others

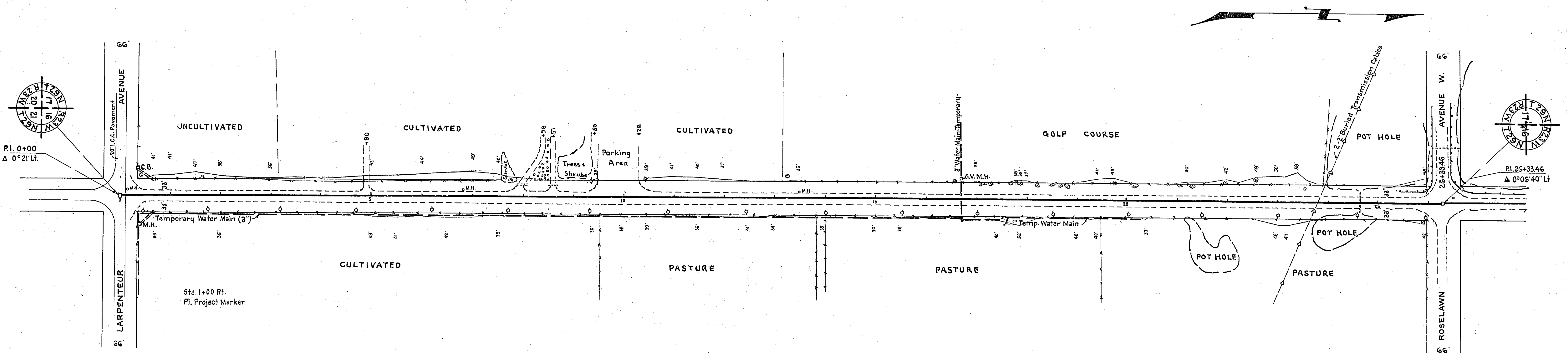
16+70 Lt. 40' Inp. G.V. M.H. Adjust Ring Casting Work to be done by others

Sta. 0+11 Lt. to Sta. 26+33 Lt. Lower Telephone Cable Where Required. Work to be done by others.

24+64 E. 23+83 E. Inp. 24"x48" C.M. 2"x2" Buried Trans. Cables. Lower Work to be done by others. Sodding 14 Sq.Yds.

26+33 Lt. 110' Inp. 24"x54" C.M. O.K. Leave Sodding 14 Sq.Yds.

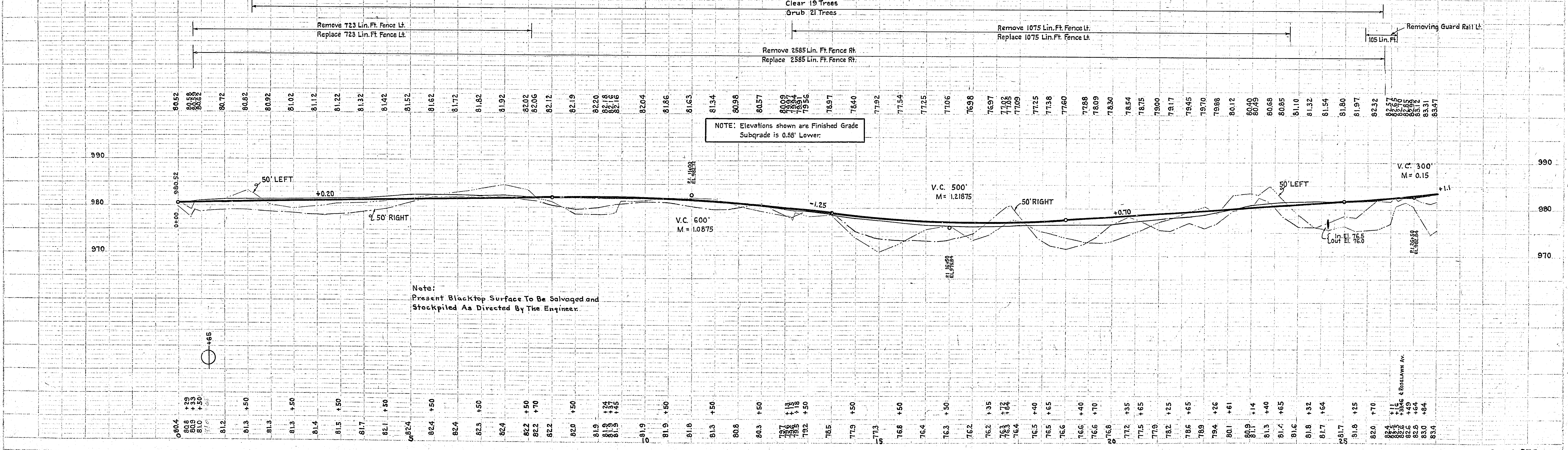
PLAN
REVISIONS
DATE
BY
CHECKED
DATE
BY
NOTED
DATE
BY



PROFILE
REVISIONS
DATE
BY
CHECKED
DATE
BY
NOTED
DATE
BY

B.M. N.W. Cor. 8th Step of School House
S.W. Cor. Cleve. Ave. & Larpenieur Ave.
Elev. 979.69

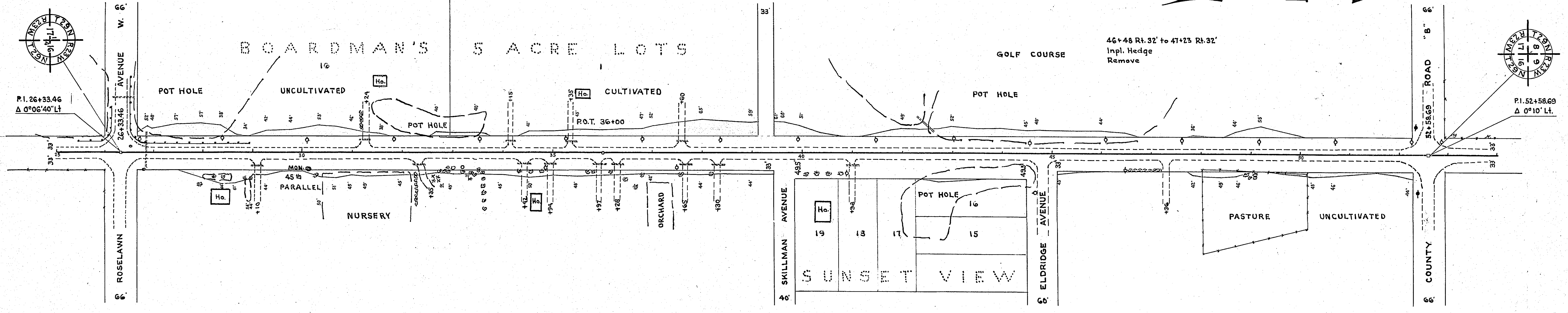
B.M. Top of North Footing Conc. Radio Tower
95' Lt. Sta. 23+80.
Elev. 983.77



Note:
Present Blacktop Surface To Be Salvaged and
Stockpiled As Directed By The Engineer.

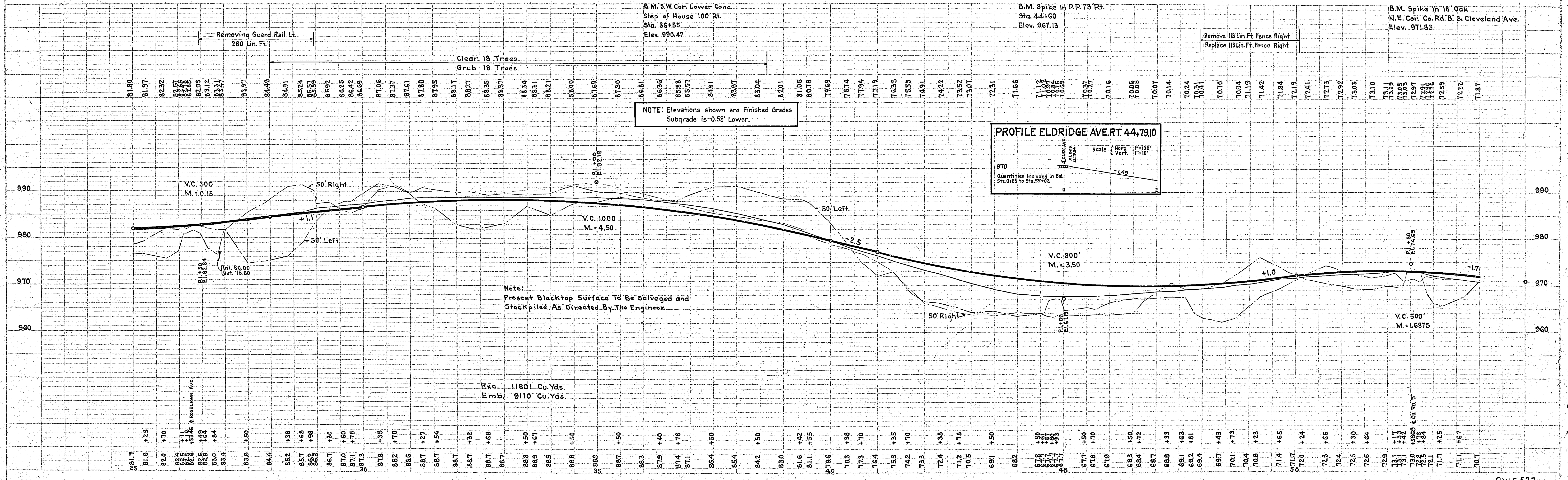
P.W.S. 573
Cleveland

28+02 Rt. 46' to 54' to 28+60 Rt. 46' to 53' Inp. Hedge Remove.
 26+86 Rt. 50' to 54' to 20+96 Rt. 50' to 54' Inp. Hedge Remove.
 32+25 Rt. 36' to 44' Rt. Inp. Hedge Remove.
 26+52 Lt. 10.3' Inp. Tele. M.H. Resef Ring Casting Work to be done by Others.
 26+84 E Inp. 24"x72" C.M. Rem. Pl. 24"x72" S.C. Pipe Sodding 14 Sq. Yds.
 29+10 Rt. Inp. 15"x24" C.M. Rem. & Repl. Sodding 11 Sq. Yds.
 31+24 Lt. Inp. 15"x20" C.M. Rem. & Repl. Sodding 11 Sq. Yds.
 32+35 Rt. Inp. 15"x20" C.M. Rem. & Repl. Sodding 11 S.Y.
 34+15 Lt. Inp. 15"x20" C.M. Rem. & Repl. Sodding 11 S.Y.
 34+42 Rt. Inp. 12"x20" C.M. Rem. Pl. 15"x20" C.M. Sodding 11 S.Y.
 34+94 Rt. Inp. 12"x18" C.M. Rem. Pl. 15"x20" C.M. Sodding 11 S.Y.
 35+35 Lt. Inp. 15"x20" C.M. Rem. & Repl. Sodding 11 S.Y.
 35+97 Rt. Inp. 12"x20" C.M. Rem. Pl. 15"x20" C.M. Sodding 11 S.Y.
 37+60 Lt. Inp. 15"x20" C.M. Rem. & Repl. Sodding 11 S.Y.
 37+65 Rt. Inp. 12"x20" C.M. Rem. Pl. 15"x20" C.M. Sodding 11 S.Y.
 38+30 Rt. Inp. 12"x18" C.M. Rem. Pl. 15"x20" C.M. Sodding 11 S.Y.
 40+98 Rt. Inp. 15"x30" C.M. Rem. & Repl. Sodding 11 S.Y.
 42+27 Lt. 73' to 42+60 Lt. 45' Inp. 8"x44" Tile. O.K. Leave.
 Sta. 26+33 Lt. to Sta. 52+59 Lt. Lower Telephone Cable Where Required. Work To Be Done By Others.



PLAN CHECKED BY DATE
 DESIGNED BY DATE
 NOTE BOOK ALIGNED CHECKED BY DATE
 NO. OF WAY CHECKED BY DATE

PROFILE CHECKED BY DATE
 NOTE BOOK GRADES CHECKED BY DATE
 B.M. NOTED BY DATE
 NO. OF STRUCTURE NOTED BY DATE



NOTE: Elevations shown are Finished Grades Subgrade is 0.58' Lower.

PROFILE ELDRIDGE AVE. RT. 44+79.10
 Scale: Vert. 1"=10', Hor. 1"=100'
 Quantities include in Bal. Sta. 0+00 to Sta. 59+00

Note: Present Blacktop Surface To Be Salvaged and Stockpiled As Directed By The Engineer.

Exc. 11601 Cu. Yds.
 Emb. 9110 Cu. Yds.

Sta. 52+59 to Sta. 66+77 Lt.
Lower Tele. Cable where reqd.
Work to be done by others.

55+29 & 55+60 Lt.
Imp. 24"x54" C.M. Rem. ←
Imp. 24"x60" C.M. Rem. ←
55+00 Rt. 45.0' to 56+00 Lt. 45.0'
Pl. 24" x 134.0 S.C. Culv.
Sodding 14 Sq. Yds.

60+60 &
Imp. 24"x68" C.M. Rem.
Pl. 24" x 72' S.C. Culv.
Sodding 14 Sq. Yds.

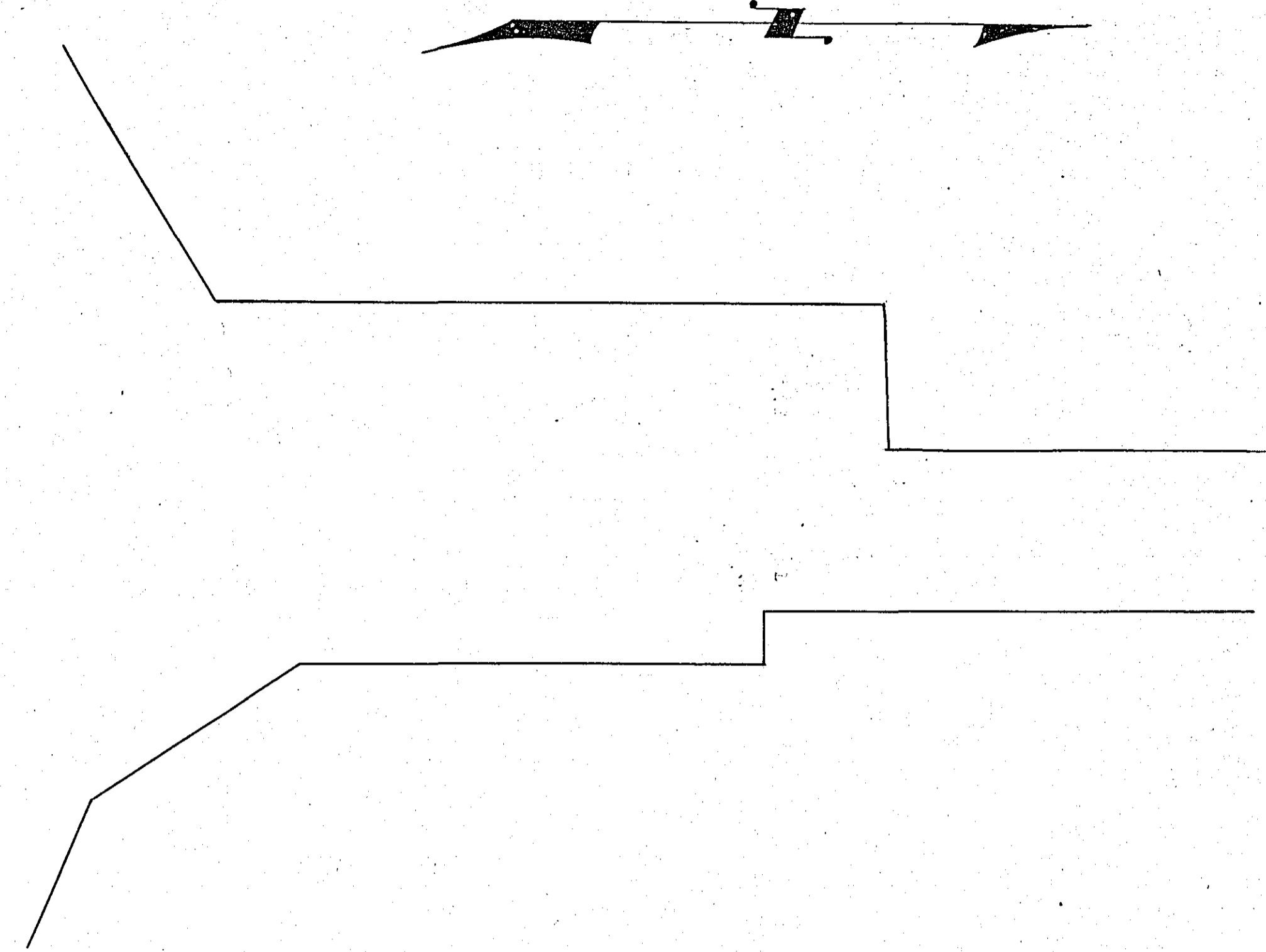
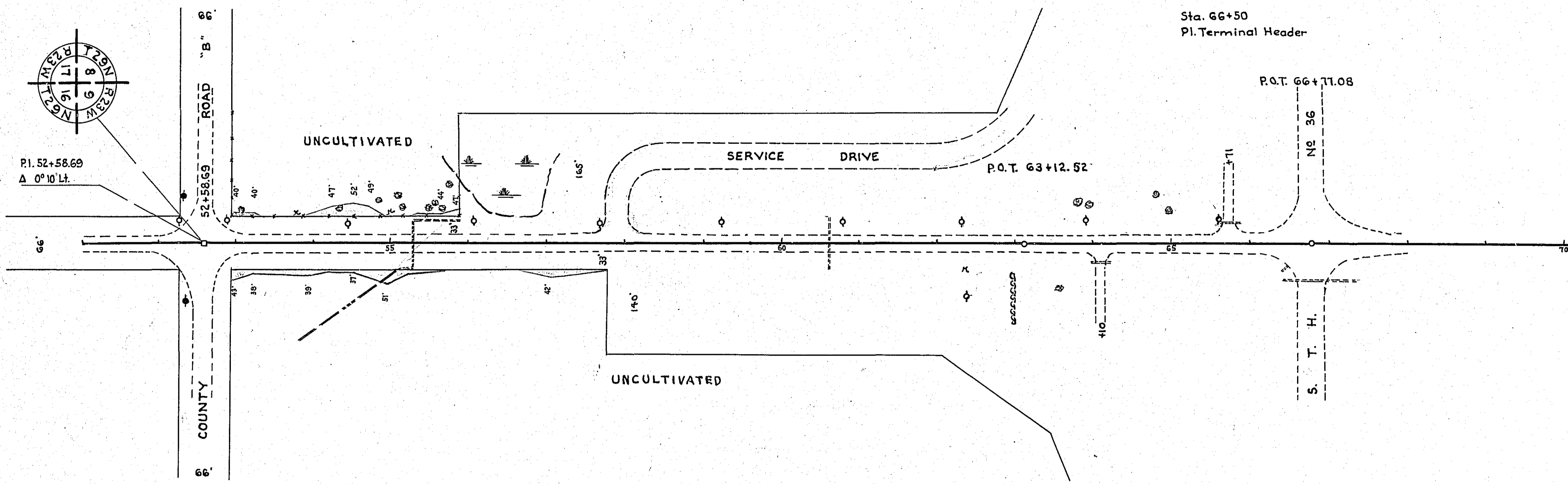
62+95 Rt. 35' to 58' Rt.
Imp. Hedge Remove

64+10 Rt.
Imp. 15"x24" C.M. Rem. & Repl.
Sodding 11 Sq. Yds.

65+71 Lt.
Imp. 15"x20" C.M. Rem.

66+45 Rt.
Imp. 12"x14" C.M. O.K. Leave.

66+77 Rt.
Imp. 24"x93" S.C. Culv. O.K. Leave



PLAN	DATE
NO.	
REVISIONS	
NO.	
DATE	
BY	
CHKD.	
DATE	
NO.	
REVISIONS	
NO.	
DATE	
BY	
CHKD.	
DATE	
NO.	

PROFILE	DATE
NO.	
REVISIONS	
NO.	
DATE	
BY	
CHKD.	
DATE	
NO.	
REVISIONS	
NO.	
DATE	
BY	
CHKD.	
DATE	
NO.	

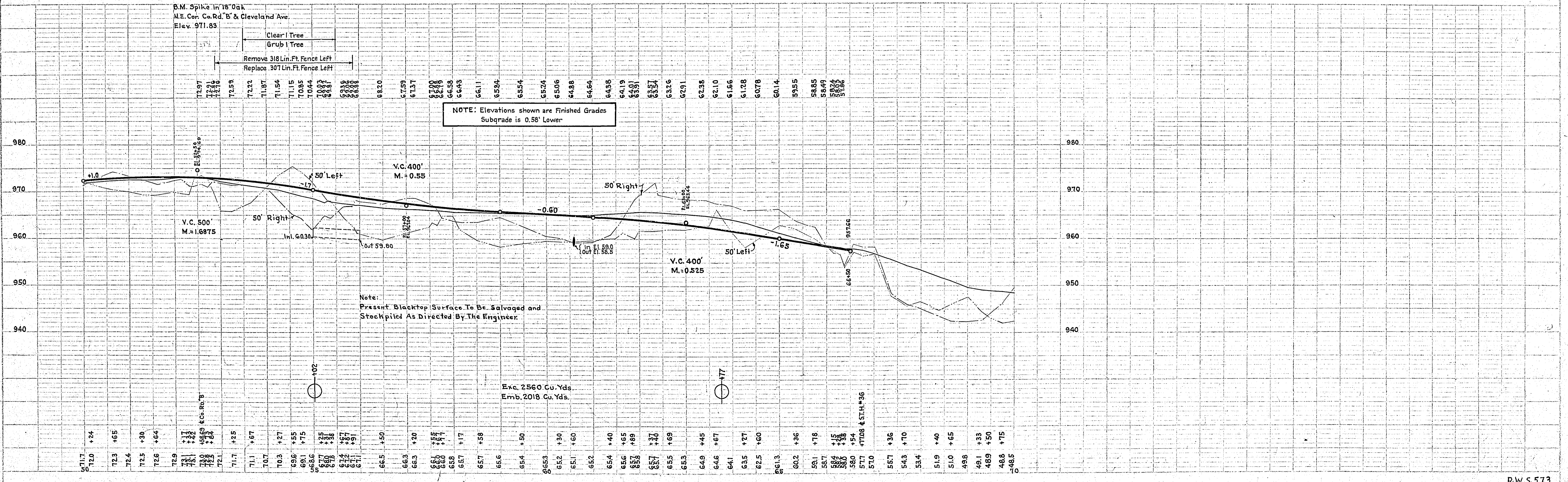


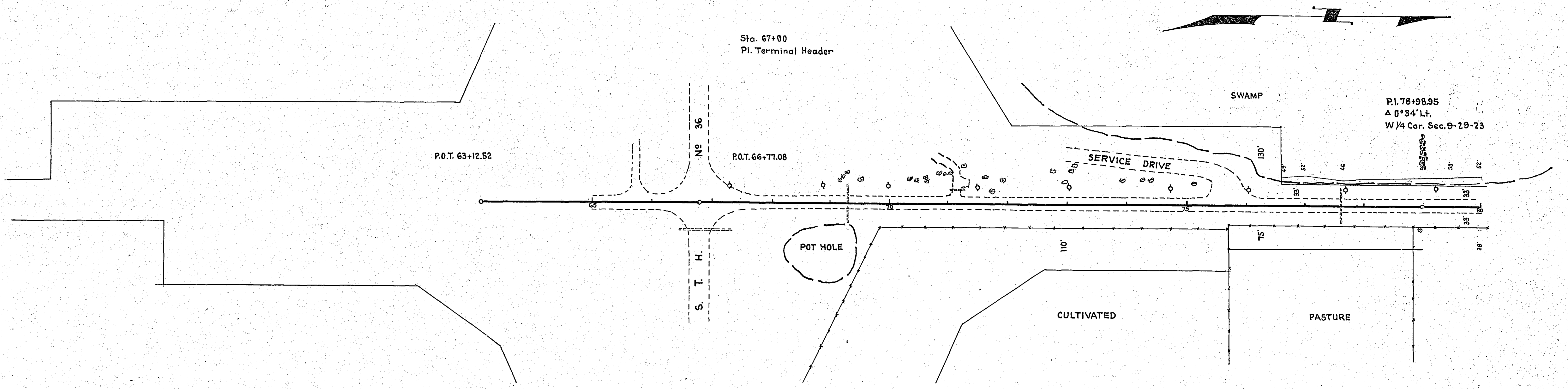
PLATE 1 - PLAN-PROFILE (A.P.R. & E. STANDARD)
REUPPER & LOWER CO., MINN. 1998

69+33 ±
Imp. 24" 6" C.M.
Rem.
Sta. 69+33 Rt. 46' to 69+56 Lt. 46'
Pl. 24' x 96' S.C. Culv.
Sodding 14 Sq. Yds.

71+15 Lt.
Imp. 15" 20" C.M.
Rem.
No Culv. Req'd.

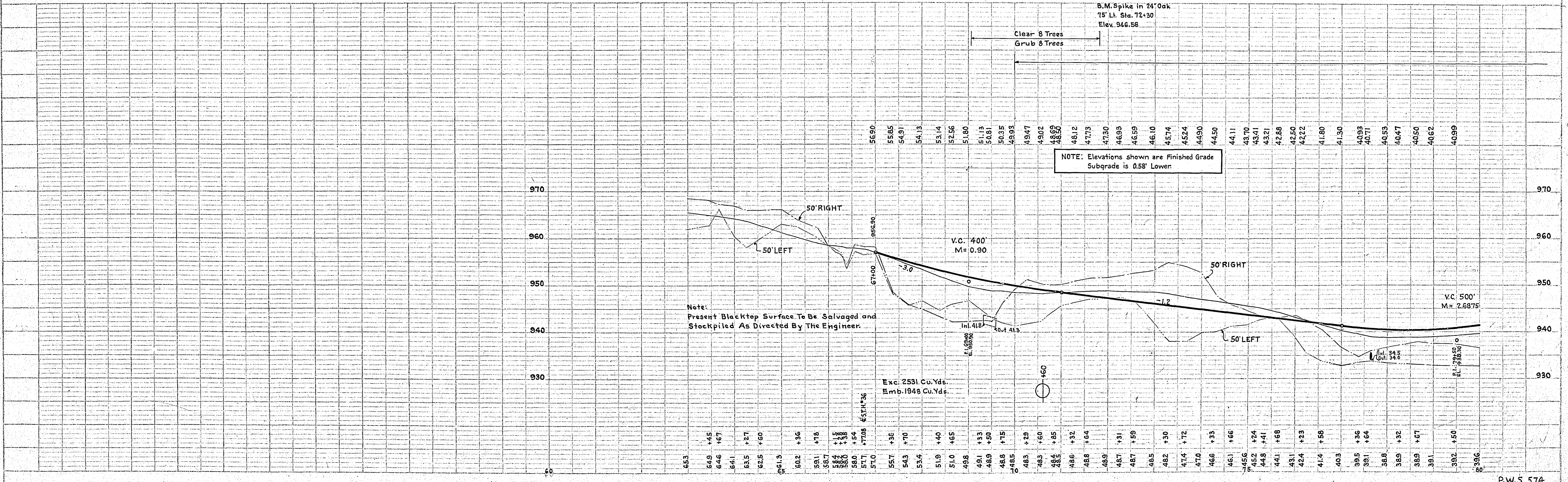
Sta. 66+77 Lt. to Sta. 78+98 Lt.
Lower Tele. Cable Where Req'd.
Work To Be Done By Others.

77+63 ±
Imp. 24" 6" C.M.
Rem.
Pl. 24' x 80' S.C. Culv.
Sodding 14 Sq. Yds.



PLAN SURVEYED BY DATE
 PLOTTED BY DATE
 CHECKED BY DATE
 NOTE: EDDI...
 NO...

PROFILE SURVEYED BY DATE
 PLOTTED BY DATE
 CHECKED BY DATE
 NOTE: BOD...
 STRUCTURE NOT IN CHARGE



135+51 Lt. Inp. 15x20 C.M. Rem. & Repl. Sodding 11 Sq. Yds.

139+92 Lt. Inp. 15x20 C.M. Rem. & Repl. Sodding 11 Sq. Yds.

141+12 Lt. Inp. 15x20 C.M. Rem. & Repl. Sodding 11 Sq. Yds.

141+91 Rt. Inp. 10x16 C.M. Rem. Sodding 11 Sq. Yds. Pl. 15"x20" C.M.

141+94 Lt. Inp. 15x20 C.M. Rem. & Repl. Sodding 11 Sq. Yds.

142+40 Rt. Inp. 15x20 C.M. Rem. & Repl. Sodding 11 S.Y.

143+65 Rt. Inp. 15x20 C.M. Rem. & Repl. Sodding 11 S.Y.

144+20 Lt. Inp. 15x20 C.M. Rem. & Repl. Sodding 11 S.Y.

143+45 Lt. Inp. 15x20 C.M. Rem. & Repl. Sodding 11 S.Y.

145+72 Rt. Inp. 15x20 C.M. Rem. & Repl. Sodding 11 S.Y.

146+00 Lt. Inp. 2" Water Pipe (Temp. Pq.) Lower Work to be done by Others

149+91.62 Lt. Inp. 21" Vit. Sewer See Plan Sheet #16

155+45 Lt. Inp. 18x26 C.M. Rem. & Repl. Sodding 11 S.Y.

155+32 Rt. Inp. 12x20 C.M. Rem. Pl. 15"x20" C.M. Sodding 11 Sq. Yds.

156+30 Rt. Inp. 15x24 C.M. Rem. & Repl. Sodding 11 S.Y.

155+76 Lt. Inp. 15x24 C.M. Rem. & Repl. Sodding 11 S.Y.

156+89 Rt. Inp. 15x24 C.M. Rem. & Repl. Sodding 11 S.Y.

157+32 Lt. Inp. 15x20 C.M. Rem. & Repl. Sodding 11 S.Y.

158+07 Lt. Inp. 15x20 C.M. Rem. & Repl. Sodding 11 S.Y.

158+40 Rt. Inp. 12x20 C.M. Rem. Pl. 15"x20" C.M. Sodding 11 S.Y.

144+38 Rt. Pl. 15"x20" C.M. Sodding 11 S.Y.

Sta. 131+53 Lt. to Sta. 160+61 Lt. Lower Telephone Cable where req'd. Work to be done by Others.

152+92 Lt. 15' Inp. Tel. M.H. Adjust Ring Casting Work to be done by others

157+52 Rt. 28' to 158+16 Rt. 28' to 37' Rt. Inp. Hedge Remove

158+00 Lt. 33' to 39' Lt. Inp. Hedge Remove

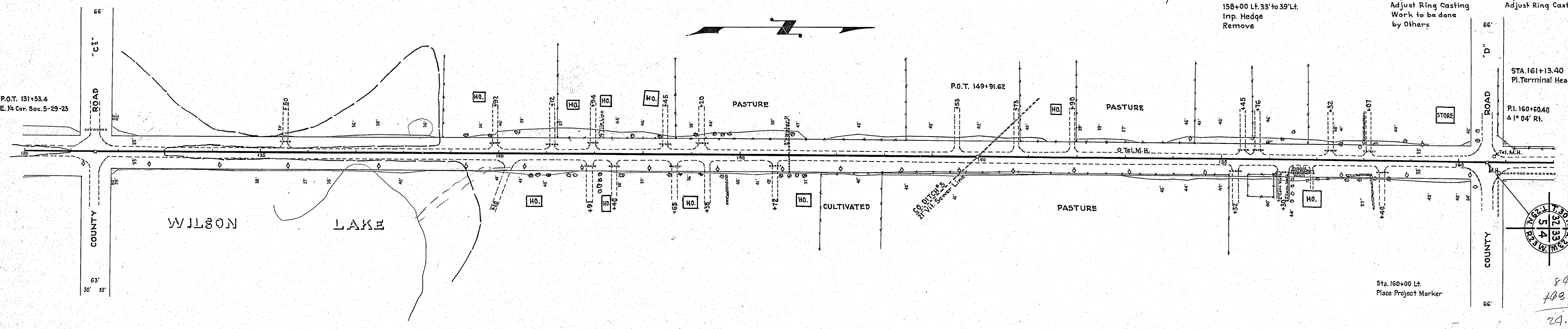
160+73 Lt. 15' Inp. Tel. M.H. Adjust Ring Casting Work to be done by Others

160+84 Rt. 21.3 Inp. Sewer M.H. Adjust Ring Casting

PLAN SUPERSEDED BY DATE

NOTE BOOK DRAWING CHECKED NO. DATE

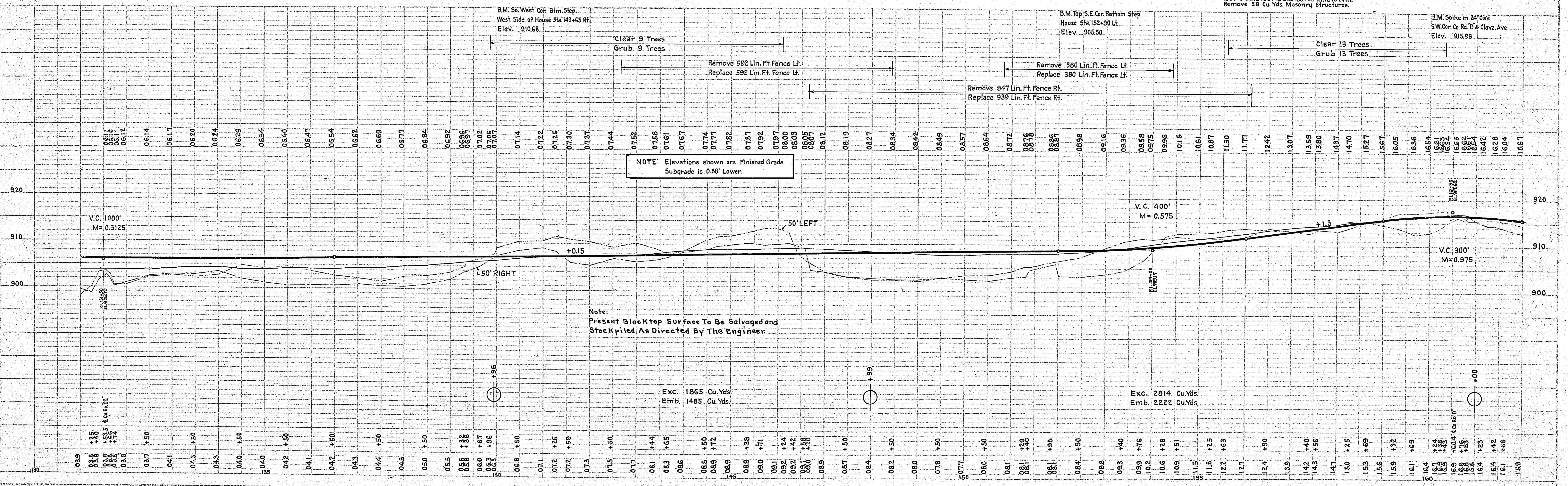
NO. DATE



PROFILE SUPERSEDED BY DATE

NOTE BOOK GRADES CHECKED NO. DATE

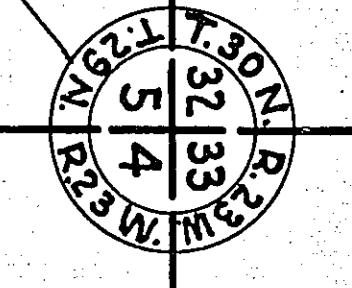
NO. DATE



156+18 Rt. 25' to 42' Rt. Remove 3.67 Sq. Yds. Conc. Sidewalk

156+41 Rt. 24' to 43' Rt. Remove 4.13 Sq. Yds. Conc. Sidewalk

156+43 Rt. 18' to 24' to Sta. 155+95 Rt. 18' to 24' Rt. Remove 5.8 Cu. Yds. Masonry Structures.



84
108-4
24.0

112+20 Rt. 78' to 112+39 65' Rt. Inp. 12"x 23" Vit. Pipe. O.K. Leave

114+28 ± Inp. 24"x 42" C.M. Rem. Pl. 24"x 80" S.C. Culv. Coddling 14 Sq. Yds.

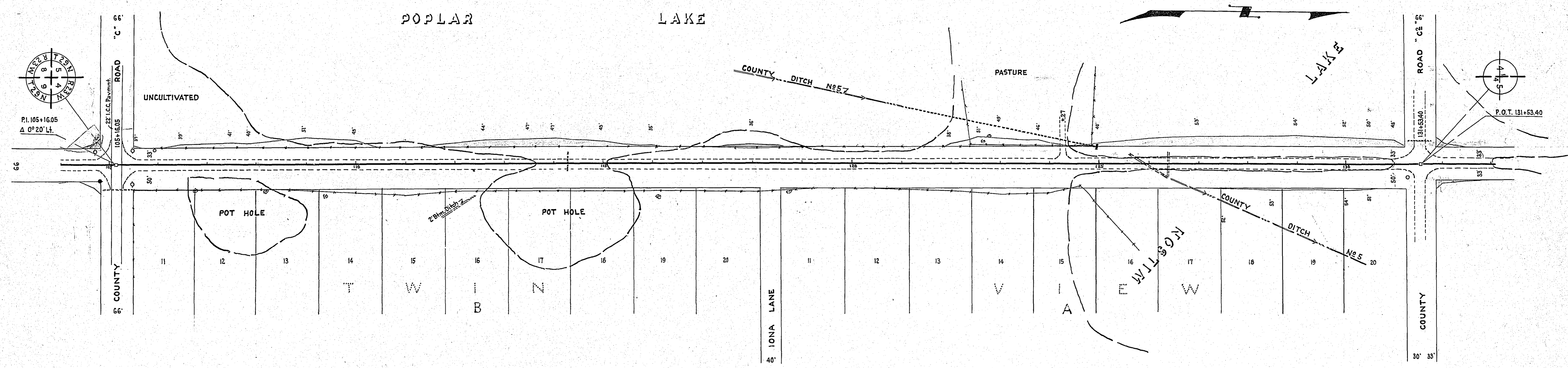
Sta. 105+27 Lt. to Sta. 131+53 Lt. Lower Tele. Cable where reqd. Work to be done by Others.

121+54 Lt. 115' to 124+92 Lt. 33' Inp. 21"x 338" Vit. Sewer Pipe Remove Clean & Relay Sta. 124+92 Lt. 33' Inp. 1'x6' Conc. Headwall O.K. Leave Trench Exc. 0' to 10' Deep 72 Lin. Ft. Trench Exc. 0' to Over 10' Deep 520 Lin. Ft.

125+90 ± Inp. 18"x 86 C.M. Rem.

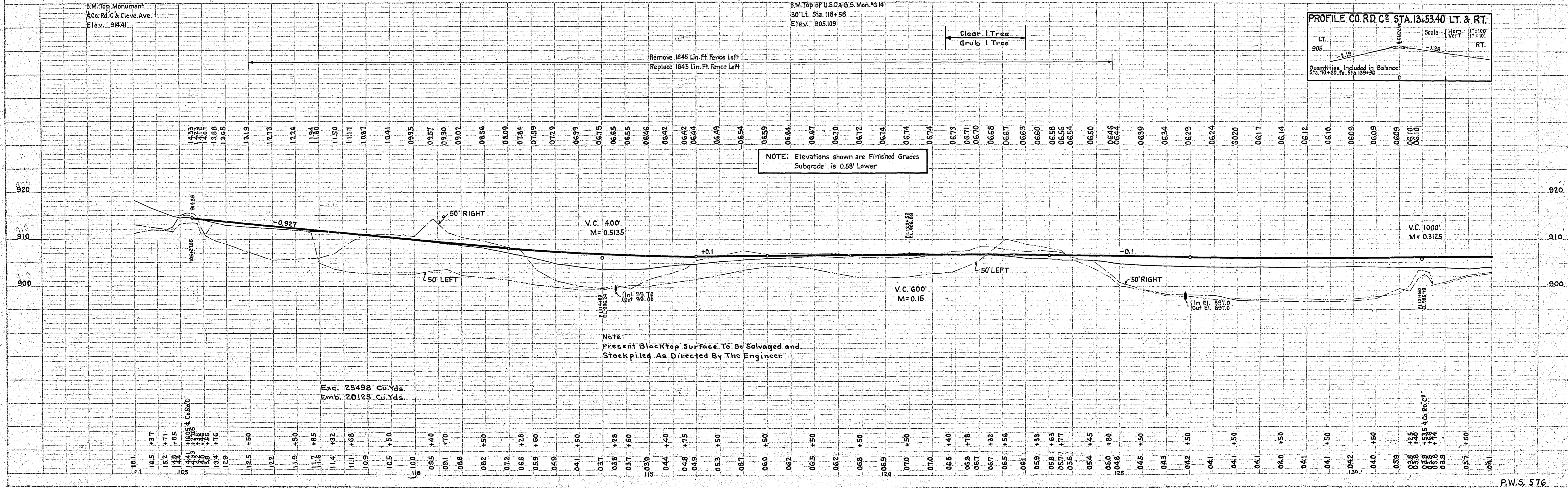
126+38 ± Inp. 24"x 50" C.M. Rem. Pl. 2'-30"x 94" C.M. Sodding 20 Sq. Yds.

131+53 Lt. 47' Inp. 24"x 57" S.C. Culv. Ext. 24"x 6" S.C. Culv. No. Ex. 24"x 6" S.C. Culv. So. Sodding 14 Sq. Yds. O.K. 15



DATE	BY	REVISIONS
		1. PLAN
		2. CHECKED
		3. APPROVED

DATE	BY	REVISIONS
		1. PROFILE
		2. CHECKED
		3. APPROVED



PROFILE CO. RD. C STA. 131+53.40 LT. & RT.

LT. 905 RT. 905

Scale: (Horr.) 1"=100' (Vert.) 1"=10'

Quantities Included in Balance Sta. 70+60 to Sta. 139+96

82+44 Lt. Imp. 15'x20' C.M. Rem. & Repl. Sodding 11 Sq. Yds.

86+75 Rt. Imp. 12'x16' C.M. Rem. Pl. 15'x20' C.M. Sodding 11 Sq. Yds.

88+20 Rt. Imp. 12'x16' C.M. Rem. Pl. 15'x20' C.M. Sodding 11 Sq. Yds.

89+79 Lt. 9.3' Imp. Tele. M.H. Lower Work to be done by Others

91+57 & 91+60 Imp. 4'x6' Buried Gas Carrier Pipe Lower Work to be done by Others

93+13 Rt. Imp. 12'x28' C.M. Rem. Pl. 15'x20' C.M. Sodding 11 Sq. Yds.

Sta. 78+98 Lt. to Sta. 105+16 Lt. Lower Tele. Cable where reqd. Work to be done by Others.

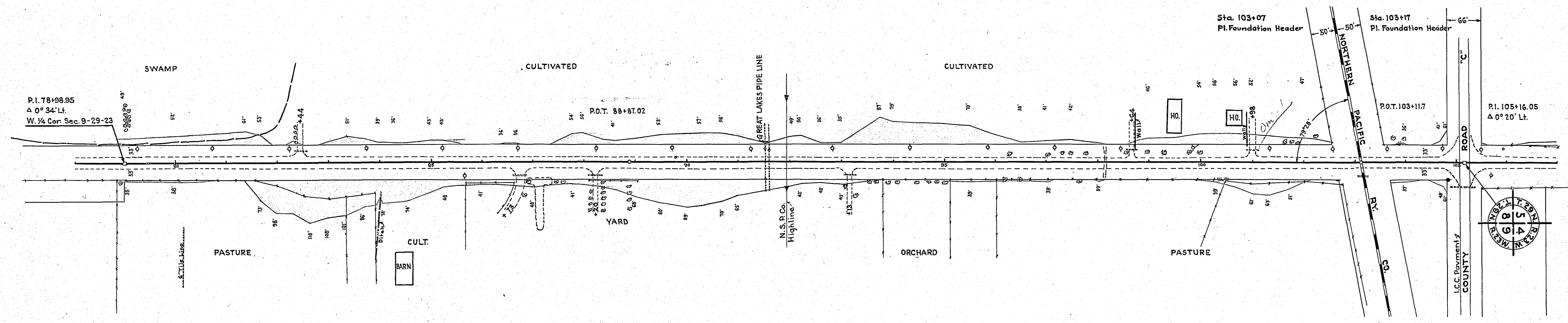
98+64 Lt. Imp. 12'x20' C.M. Rem. Pl. 15'x20' C.M. Sodding 11 Sq. Yds.

100+98 Lt. Imp. 15'x20' C.M. Rem. & Repl. Sodding 11 Sq. Yds.

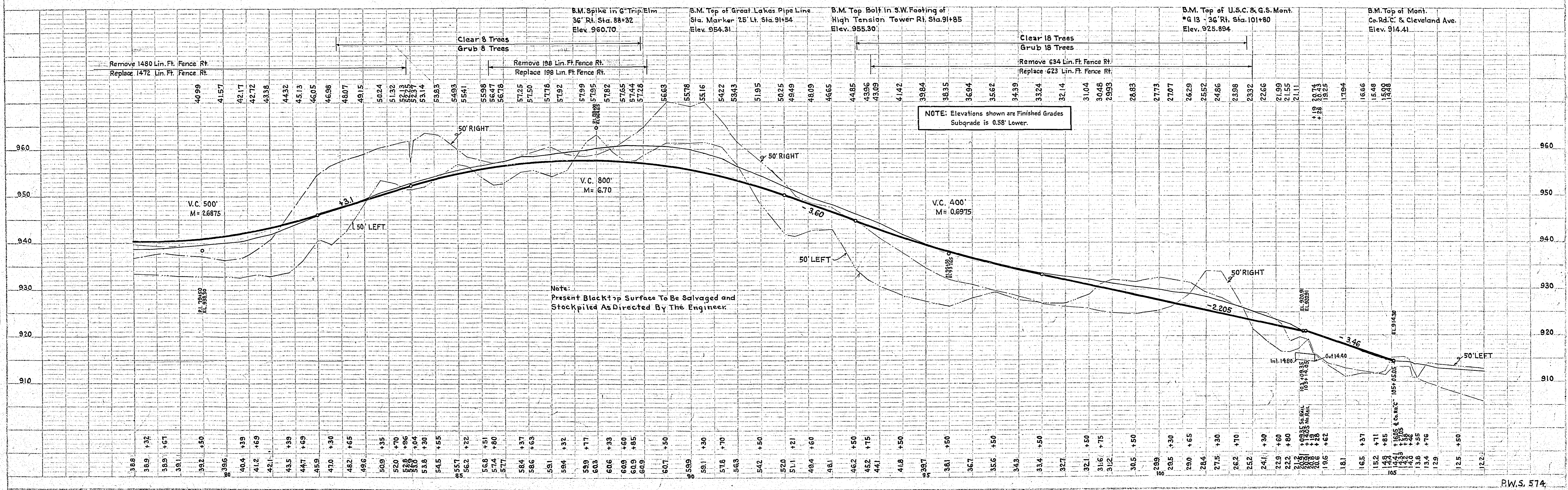
103+14 Rt. Imp. 15'x20' C.M. Ex. 15'x10' C.M. No. Ext. 15'x10' C.M. So. Sodding 11 Sq. Yds.

105+47 Rt. Imp. 24'x65' S.C. Pipe. O.K. Leave

86+84 Rt. 35' to 40' Rt. to Sta. 87+35 Rt. 35' to 40' Rt.
Imp. Hedge
Remove



PLAN
BY: []
DATE: []
NOTE: BOOK AT WORKS CHECKED BY []
NO. []



PROFILE
BY: []
DATE: []
NOTE: BOOK AT WORKS CHECKED BY []
NO. []