

CONVENTIONAL SIGNS & ABBREVIATIONS

STATE LINE.....	EXCAVATION.....	F
COUNTY LINE.....	EMBANKMENT.....	F
TOWNSHIP LINE.....	OVERHAUL.....	H
SECTION LINE.....	SURFACING.....	S
CITY, VILLAGE, OR BOROUGH.....	GUARD RAIL.....	GR
FENCE LINE.....	INTERSECTION ANGLE.....	A
RIGHT-OF-WAY LINE.....	RADIUS.....	R
TRAVELLED WAY.....	ELEVATION.....	EL
RAILROADS.....	VERTICAL CURVE.....	VC
RETAINING WALL.....	BENCH MARK.....	B.M.
BASE OR SURVEY LINE.....	SECTIONAL CONCRETE CULVERT.....	P.1
LEVEE.....	CORRUGATED METAL CULVERT.....	C.M.
GRAVEL PIT.....	CULVERT HAUL.....	P.L.H.
SAND PIT.....	TON MILES.....	T.M.
CLAY PIT.....	PLACE.....	P
ROCK QUARRY.....	IN PLACE.....	INP
CULVERTS.....	REPLACE.....	REP
PLAIN.....	RIGHT.....	R
WITH FACEWALLS.....	LEFT.....	L
WITH WINGWALLS.....	HAND DITCHING.....	H.D.
DROP INLET.....	POINT OF CURVE.....	P.C.
POWER POLE LINE.....	POINT OF TANGENT.....	P.T.
TELEPHONE OR TELEGRAPH LINE.....	POINT OF INTERSECTION.....	P.I.
MARSH.....	SPECIAL EXCAVATION.....	S.E.
HEDGE, BRUSH, OR TIMBER.....	SPECIAL FLOWING.....	S.P.
GROUND ELEVATION.....	TELEPHONE POLE.....	T.P.
GRADE ELEVATION.....		

OFFICE OF COUNTY SURVEYOR  
 RAMSEY COUNTY  
 Construction Plan of County Project No.

From the S.W. Cor. of Sec. 17 T. 29 N. R. 23 W. To the S. 1/4 Cor. of Sec. 15 T. 29 N. R. 23 W.

GROSS LENGTH 13256.10 FEET 2.510 MILES  
 LENGTH OF EXCEPTIONS 194.40 FEET 0.037 MILES  
 NET LENGTH 13061.70 FEET 2.473 MILES  
 PLAN, 1 Inch = 100 Feet  
 PROFILE, Horiz. 1 Inch = 100 Feet. Vert. 1 Inch = 10 Feet  
 WORKING PLANS { Horiz. 1 Inch = 100 Feet  
 Vert. 1 Inch = 10 Feet  
 Cross-Sections, 1 Inch = 10 Feet  
 LAYOUT  
 SCALE, 1 Inch = 2640 Feet

SPECIFICATIONS

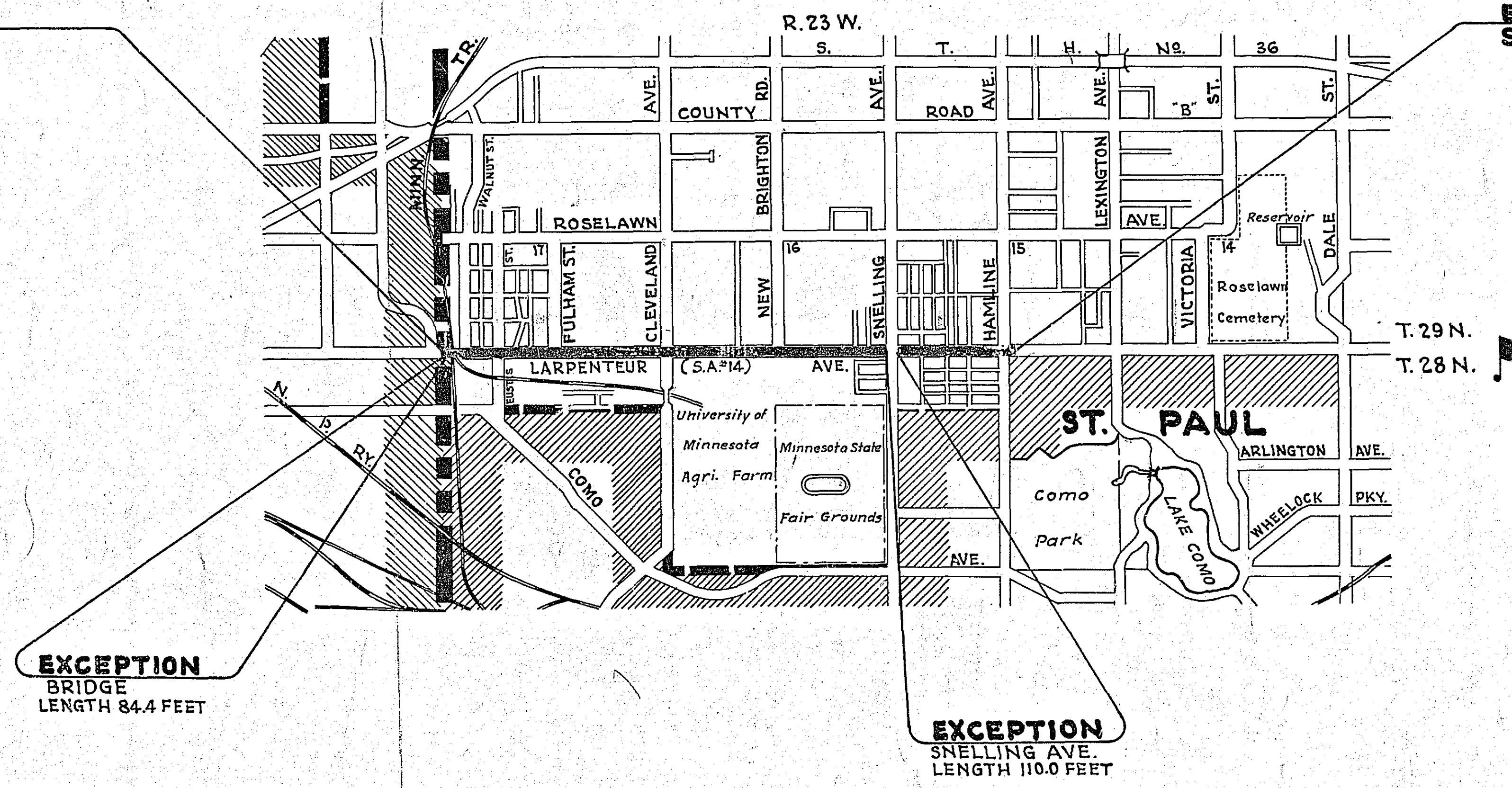
NOTE: The Minnesota Highway Department Specifications for Highway Construction dated July 1, 1938 and Supplement No. 3 approved by the Public Roads Administration Nov. 15, 1939 as modified by Supplement No. 4 dated March 1, 1940 and approved by the Public Roads Administration April 28, 1941, shall govern.

INDEX OF SHEETS

Sheet No. 1	Title Sheet
2	Estimate and Grading Details
3	Paving and Miscellaneous Details
4-7	Panel Layout Sheets
8-13	Plan Sheets
14-29	Cross Section Sheets

BEG.  
STA. 0+00

END  
STA. 132+56.10



Planned By A. D. Brant 9/18 1944  
 ASST. CIVIL ENGINEER  
 Approved Walter M. Taylor 9/18 1944  
 ACTING COUNTY SURVEYOR  
 Approved George O. Schumann 9/18 1944  
 VICE CHAIRMAN, RAMSEY COUNTY BOARD  
 Recommended for Approval H. E. Glend 10-17 1944  
 DISTRICT ENGINEER  
 Recommended for Approval H. E. Glend 8/9 1945  
 ENGINEER OF SURVEYS & DESIGN  
 Approved O. L. Kipp 8-9-1945  
 CHIEF ENGINEER

RECOMMENDED FOR APPROVAL 19  
 DISTRICT ENGINEER  
 PUBLIC ROADS ADMINISTRATION  
 FEDERAL WORKS AGENCY

APPROVED 19  
 DIVISION ENGINEER  
 PUBLIC ROADS ADMINISTRATION  
 FEDERAL WORKS AGENCY



0+0-1 Rt. 11' Imp. M.H.(M.G.E.) Adjust Ring Casting Work to be done by others.

0+03 Rt. 14.5' Imp. M.H.(M.G.E.) Adj. Ring Casting Work to be done by others.

0+05 Lt. 2' Lt. 10.5' Lt. 22' Imp. 3 M.H.(M.G.E.) Adjust Ring Castings Work to be done by others.

0+87 Lt. 4' Imp. M.H.(M.G.E.) Adjust Ring Casting Work to be done by others.

1+20 Rt. 26' Imp. M.H.(Telephone Co) Imp. Timber Bridge Adjust Ring Casting Work to be done by others.

2+74 Lt. 10.5' Imp. M.H.(M.G.E.) Adjust Ring Casting Work to be done by others.

3+13.3 to 3+97.7' Imp. Timber Bridge Work to be done by others.

4+36.5 Lt. 9.5' Imp. M.H.(M.G.E.) Adjust Ring Casting Work to be done by others.

6+61 Lt. Imp. 15x42CM. Remove

9+91 Lt. Imp. 12x40CM. Remove.

7+32 Rt. 17' to 13+06 Rt. 17' Imp. 2" Water Main O.K. Leave

13+38' Imp. 18x126CM. Remove

13+38 Lt. 32.5' Imp. Catch Basin Remove

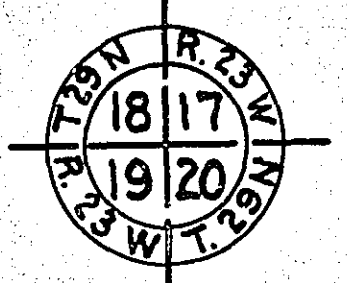
14+40 Rt. 30' to 17+25 Rt. 30' Inplace Hedge Remove Work to be done by others.

20+14 Lt. Imp. 12x18CM. Remove

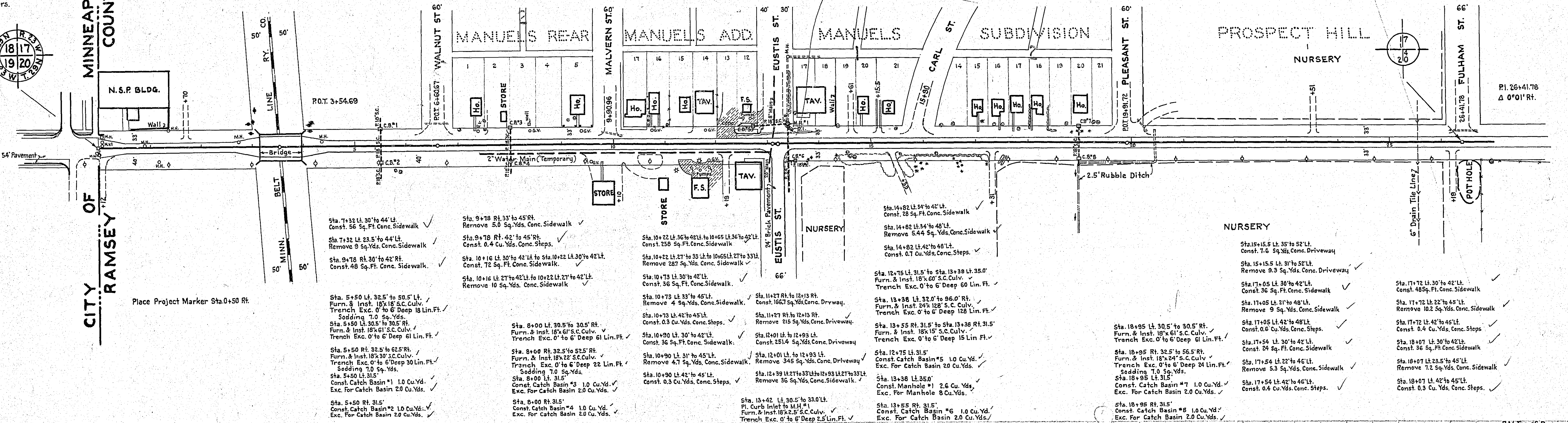
20+45' Imp. 24x55" S.C. Culv. Remove Use in Sewer Sta. 53+40 to Sta. 64+45 Lt. 34' Sta. 20+24 Lt. 48' to Sta. 26+02 Rt. 45' Inplace Nursery stock Remove Work to be done by others.

19+71 Lt. 18' to 52+68 Lt. 18' Imp. Buried Tele. Cable Relay Work to be done by others.

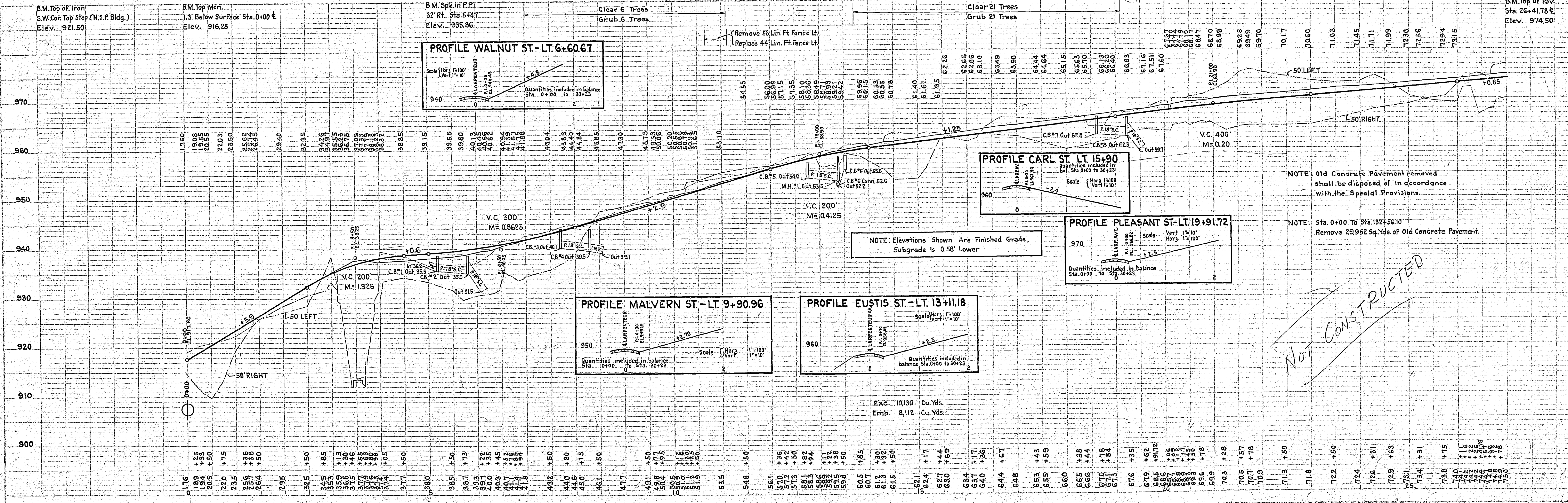
26+42 Lt. Imp. 24x55" S.C. Culv. Remove Use in Sewer Sta. 53+40 to Sta. 64+45 Lt. 34'



CITY OF MINNEAPOLIS  
CITY OF RAMSEY



Place Project Marker Sta. 0+50 Rt.



NOT CONSTRUCTED

PLAN SERVICES PROVIDED:  
NOTE: WORK SHALL BE CHECKED BY THE CITY ENGINEER.  
DATE: 10/11/17  
BY: [Signature]

PROFILE SERVICES PROVIDED:  
NOTE: ELEVATIONS SHOWN ARE FINISHED GRADE SUBGRADE IS 0.58' LOWER.  
DATE: 10/11/17  
BY: [Signature]

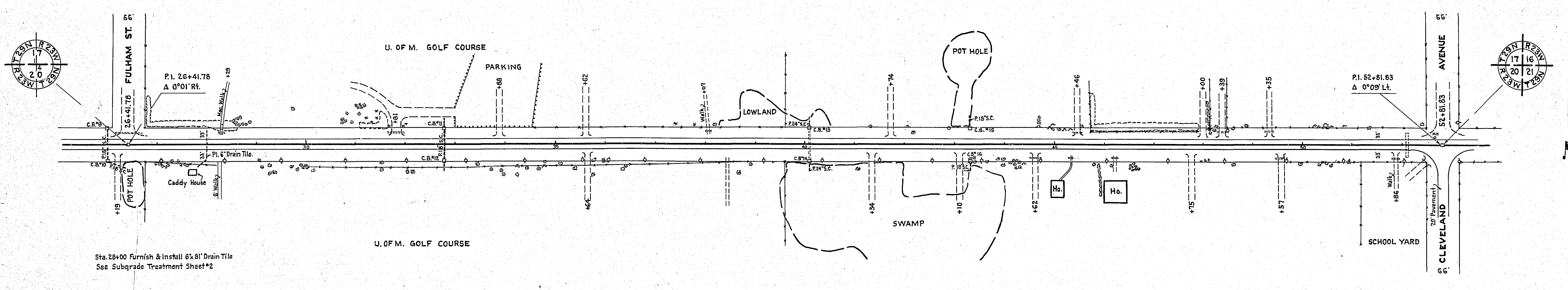


28+19 Lt. Imp. 12x7.5 C.Culv. Remove  
 31+81 Lt. Imp. 12x38 CM. Remove  
 32+80 E. Imp. 15x29 S.Culv. Remove  
 19+71 Lt. 18' to 52+68 Lt. 18' Imp. Buried Telephone Cable. Relay Work to be done by others.  
 38+07 Lt. Imp. 12x10 CM. Remove  
 40+09 E. Imp. 24x27 S.Culv. O.K. Leave  
 44+62 Rt. Imp. 12x22 S.Culv. Remove  
 45+37 Rt. Imp. 12x8 CM. Remove  
 45+46 Lt. Imp. 12x20 CM. Remove  
 46+22 Rt. Imp. 12x8 S.Culv. Remove  
 48+39 Lt. Imp. 12x20 CM. Remove  
 49+35 Lt. Imp. 12x14 CM. Remove  
 49+57 Rt. Imp. 15x20 CM. Remove  
 51+86 Rt. Imp. 12x8 CM. Remove  
 52+09 E. Imp. 24x42 C.Culv. 6 Conc. Apron Lt. 5' " " Rt. Remove  
 52+47 Rt. Imp. 12x20 CM. Remove  
 52+68 Lt. 15' Imp. M.H. (Telephone Co) Reconstruct Work to be done by others.

Sta. 26+75 Lt. 37' to 50' Lt. to Sta. 28+60 Lt. 27' to 45' Lt.  
 Inplace Shrubs. Remove 0.06 Acre

Sta. 31+10 Lt. 32' to 44' Lt. to Sta. 31+50 Lt. 31' to 48' Lt.  
 Inplace Shrubs. Remove 0.02 Acre

Sta. 45+71 Lt. 28' to 40' Lt. to Sta. 47+92 Lt. 27' to 40' Lt.  
 Inplace Hedge. Remove. 0.07 Acre.



PLAN  
 REVIEWED BY  
 DATE  
 NOTE BOOK ACCURACIALLY CHECKED  
 ST. OF HWY CHECKED  
 NO.

Sta. 26+00 Lt. 30.5' to 30.5' Rt.  
 Furn. & Inst. 18"x6" S.Culv.  
 Trench Exc. 0' to 6' Deep 61 Lin. Ft.

Sta. 26+00 Rt. 32.5' to Sta. 26+35 Rt. 45'  
 Furn. & Inst. 18"x36" S.Culv.  
 Trench Exc. 0' to 6' Deep 35 Lin. Ft.  
 Sodding 7.0 Sq. Yds.

Sta. 26+00 Lt. 31.5'  
 Const. Catch Basin #9 1.0 Cu. Yd.  
 Exc. For Catch Basin 2.0 Cu. Yds.

Sta. 26+00 Rt. 31.5'  
 Const. Catch Basin #10 1.0 Cu. Yd.  
 Exc. For Catch Basin 2.0 Cu. Yds.

Sta. 32+80 Lt. 50' to 54' Rt.  
 Furn. & Inst. 18"x104" S.Culv.  
 Trench Exc. 0' to 6' Deep 104 Lin. Ft.  
 Sodding 14 Sq. Yds.

Sta. 32+80 Lt. 31.5'  
 Const. Catch Basin #11 1.0 Cu. Yd.  
 Exc. For Catch Basin 2.0 Cu. Yds.

Sta. 32+80 Rt. 31.5'  
 Const. Catch Basin #12 1.0 Cu. Yd.  
 Exc. For Catch Basin 2.0 Cu. Yds.

Sta. 40+09 Lt. 31.5'  
 Const. Catch Basin #13 1.0 Cu. Yd.  
 Exc. For Catch Basin 2.0 Cu. Yds.

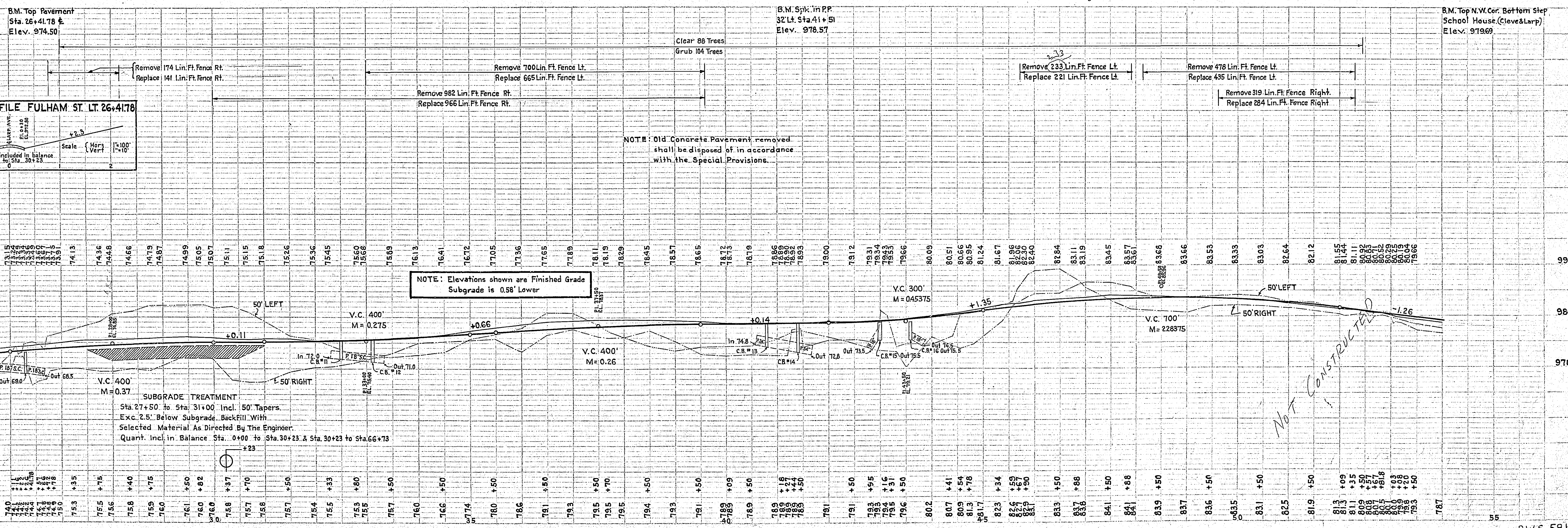
Sta. 40+09 Rt. 31.5'  
 Const. Catch Basin #14 1.0 Cu. Yd.  
 Exc. For Catch Basin 2.0 Cu. Yds.

Sta. 43+30 Lt. 32.5' to 56.5' Lt.  
 Furn. & Inst. 18"x36" S.Culv.  
 Trench Exc. 0' to 6' Deep 26 Lin. Ft.  
 Sodding 7.0 Sq. Yds.

Sta. 43+30 Rt. 32.5' to 54.5' Rt.  
 Furn. & Inst. 18"x22" S.Culv.  
 Trench Exc. 0' to 6' Deep 22 Lin. Ft.  
 Sodding 1.0 Sq. Yds.

Sta. 43+30 Lt. 31.5'  
 Const. Catch Basin #15 1.0 Cu. Yd.  
 Exc. For Catch Basin 2.0 Cu. Yds.

Sta. 43+30 Rt. 31.5'  
 Const. Catch Basin #16 1.0 Cu. Yd.  
 Exc. For Catch Basin 2.0 Cu. Yds.



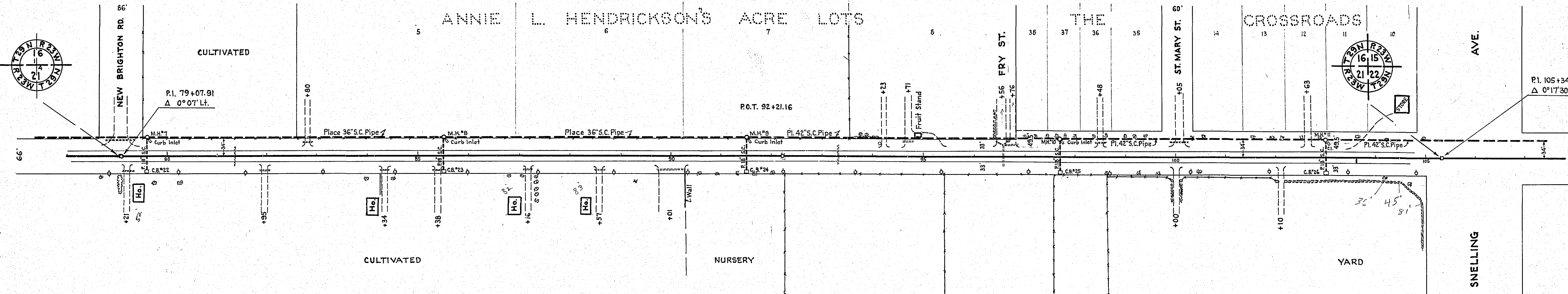
PROFILE  
 SUPPLIED BY  
 MADE BY  
 CHECKED BY  
 DATE  
 NO.

P.W.S. 581-6501



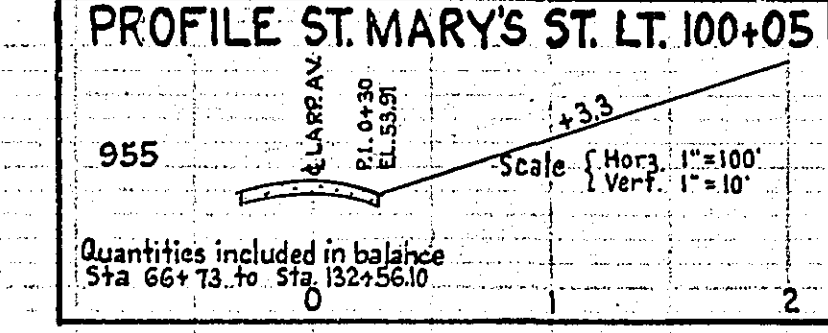
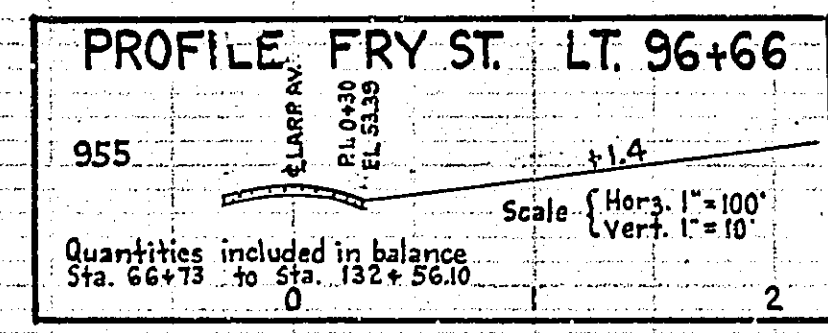
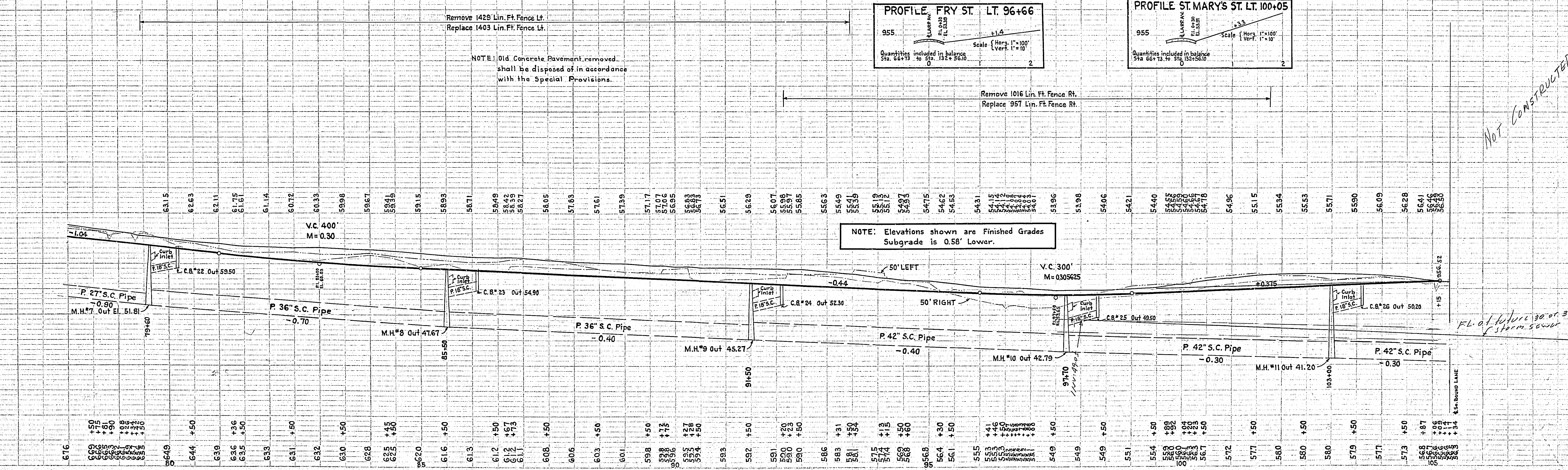
FED. ROAD DIST. NO.	STATE	FED. AID PROJ. NO.	SEC.	FISCAL YEAR	SHEET NO.	TOTAL SHEETS
4	MINN.				11	29

81+36.4 Inp. 18"x4'x42" W-42 Conc. Remove  
 81+95 Rt. Inp. 15"x20" C.M. Remove  
 82+80 Lt. Inp. 12"x20" C.M. Remove  
 84+34 Rt. Inp. 15"x20" C.M. Remove  
 85+38 Rt. Inp. 15"x20" C.M. Remove  
 87+16 Rt. Inp. 15"x20" C.M. Remove  
 88+57 Rt. Inp. 15"x20" C.M. Remove  
 90+01 Rt. Inp. 15"x30" S.C. Culv. Remove  
 93+31.4 Inp. 30"x4'x42" W-42 Conc. Remove  
 94+71 Lt. Inp. 12"x20" C.M. Remove  
 96+50 Lt. Inp. 15"x20" C.M. Remove  
 96+57.4 Inp. 30"x4'x42" W-42 Conc. Remove  
 96+72 Lt. Inp. 15"x32" C.M. Remove  
 98+48 Lt. Inp. 15"x20" C.M. Remove  
 100+05 Lt. Inp. 15"x30" C.M. Remove  
 103+59 Rt. 0' to 9' Rt. Inp. Traffic Changer Remove & Replace To be done by others.  
 105+09.4 Inp. 12"x90" S.C. Culv. & C.M. Remove



Sta. 79+60 Lt. 30.5' to 33.0' Lt. Relay 18"x30" S.C. Culv. Obtain From Sta. 79+08 Lt. From Curb Inlet to M.H.#7 Trench Exc. 0' to 6' Deep 3.0 Lin. Ft.  
 Sta. 79+60 Lt. 32' to 30.5' Rt. Relay 18"x62.5" S.C. Culv. Obtain From Sta. 79+08 Lt. Trench Exc. 0' to 6' Deep 62.5 Lin. Ft.  
 Sta. 79+60 Lt. 34.0' Const. Manhole #7 - 4.8 Cu. Yds. Exc. For Manhole 2.0 Cu. Yds.  
 Sta. 79+60 Rt. 31.5' Const. Catch Basin #22 1.0 Cu. Yd. Exc. For Catch Basin 3.0 Cu. Yds.  
 Sta. 84+28 Rt. 33' to 42' Rt. Const. 10 Sq. Ft. Conc. Sidewalk Remove 3 Sq. Yds. Conc. Sidewalk  
 Sta. 84+28 Rt. 33' to 47' Rt. Remove 3 Sq. Yds. Conc. Sidewalk  
 Sta. 84+28 Rt. 42' to 47' Rt. Const. 0.3 Cu. Yd. Conc. Steps.  
 Sta. 85+50 Lt. 30.5' to 33.0' Lt. Furn. & Inst. 18"x30" S.C. Culv. From Curb Inlet to Manhole #8 Trench Exc. 0' to 6' Deep 3.0 Lin. Ft.  
 Sta. 85+50 Lt. 32.0' to 30.5' Rt. Furn. & Inst. 18"x62.5" S.C. Culv. Trench Exc. 0' to 6' Deep 62.5 Lin. Ft.  
 Sta. 85+50 Lt. 34.0' Const. Manhole #8 - 4.7 Cu. Yds. Exc. For Manhole 2.0 Cu. Yds.  
 Sta. 85+50 Rt. 31.5' Const. Catch Basin #23 1.0 Cu. Yd. Exc. For Catch Basin 3.0 Cu. Yds.  
 Sta. 79+60 Lt. 34' to Sta. 91+50 Lt. 34' Furn. & Inst. 36"x1100" Rein. F. Conc. Sew. Pipe Trench Exc. 0' to over 10' Deep 1190 Lin. Ft.  
 Sta. 91+50 Lt. 30.5' to 33.0' Lt. Furn. & Inst. 18"x30" S.C. Culv. From Curb Inlet to Manhole #9 Trench Exc. 0' to 6' Deep 3.0 Lin. Ft.  
 Sta. 91+50 Lt. 32.0' to 30.5' Rt. Furn. & Inst. 18"x62.5" S.C. Culv. Trench Exc. 0' to 6' Deep 62.5 Lin. Ft.  
 Sta. 91+50 Lt. 34.0' Const. Manhole #9 - 4.5 Cu. Yds. Exc. For Manhole 2.0 Cu. Yds.  
 Sta. 91+50 Rt. 31.5' Const. Catch Basin #24 1.0 Cu. Yd. Exc. For Catch Basin 3.0 Cu. Yds.  
 Sta. 97+70 Lt. 30.5' to 33.0' Lt. Furn. & Inst. 18"x30" S.C. Culv. From Curb Inlet to Manhole #10 Trench Exc. 0' to 6' Deep 3.0 Lin. Ft.  
 Sta. 97+70 Lt. 32.0' to 30.5' Rt. Furn. & Inst. 18"x62.5" S.C. Culv. Trench Exc. 0' to 6' Deep 62.5 Lin. Ft.  
 Sta. 97+70 Lt. 34.0' Const. Manhole #10 - 4.5 Cu. Yds. Exc. For Manhole 2.0 Cu. Yds.  
 Sta. 97+70 Rt. 31.5' Const. Catch Basin #25 1.0 Cu. Yd. Exc. For Catch Basin 3.0 Cu. Yds.  
 Sta. 103+00 Lt. 30.5' to 33.0' Lt. Relay 18"x28.5" S.C. Culv. Obtain From Sta. 105+14 Lt. Trench Exc. 0' to 6' Deep 62.5 Lin. Ft.  
 Sta. 103+00 Lt. 30.5' to 33.0' Rt. Furn. & Inst. 18"x30" S.C. Culv. From Curb Inlet to Manhole #11 Trench Exc. 0' to 6' Deep 3.0 Lin. Ft.  
 Sta. 103+00 Lt. 34.0' Const. Manhole #11 - 5.8 Cu. Yds. Exc. For Manhole 2.0 Cu. Yds.  
 Sta. 103+00 Rt. 31.5' Const. Catch Basin #26 1.0 Cu. Yd. Exc. For Catch Basin 3.0 Cu. Yds.

B.M. Top N.W. Cor. Bfm. Step Sta. 79+40 Rt. Elev. 966.48  
 B.M. S.W. Cor. Lower Step Sta. 93+70 Lt. Elev. 961.30  
 B.M. Top Hydrant 65 Rt. Sta. 105+51 Elev. 958.05



NOTE: Elevations shown are Finished Grades Subgrade is 0.58' Lower.

NOTE: Old Concrete Pavement removed shall be disposed of in accordance with the Special Provisions.

NOT CONSTRUCTED

PLAN  
 SURVEYED BY  
 PLOTTED BY  
 CHECKED BY  
 DATE  
 NO.

PROFILE  
 SURVEYED BY  
 PLOTTED BY  
 CHECKED BY  
 DATE  
 NO.



105+12 Lt. 29' 105+68 Rt. 29' 105+85 Lt. 29' 106+37 Rt. 29' Inp. 4 Traffic Signals. Remove & Replace Work to be done by others.

107+84 Lt. 0' to 9' Lt. Inp. Signal Changer Remove & Replace Work to be done by others.

106+97 Lt. Inp. 2.5x2.5 C.B. Remove

106+96 Lt. to 109+40 Lt. Inp. 15'x25' S.C. Culv. Remove

107+34 Lt. Remove

111+26 Lt. Inp. 24'x88' S.C. Culv. Remove

111+71 Lt. Inp. 4x4' M.H.Lt. Remove

112+02 Lt. Inp. 24'x62' C.M. Remove

114+46 Lt. Inp. 12'x8' S.C. Culv. Remove

118+11 Lt. Inp. 12'x8' S.C. Culv. Remove

118+60 Lt. Inp. 15'x20' C.M. Remove

121+97 Lt. Inp. 15'x41' S.C. Culv. Remove Use at Sta. 112+50

123+19 Lt. Inp. 15'x30' C.M. Remove

124+34 Lt. Inp. 15'x60' S.C. Culv. Remove Use at Sta. 107+60

125+30 Rt. Inp. 15'x38' C.M. Remove

125+14 Lt. Inp. 15'x29' S.C. Culv. Remove Use 62.5' at Sta. 119+00 Use 29.5' at Sta. 103+00

125+14 Lt. Inp. 12'x17' C.M. Remove

125+55 Lt. Inp. 15'x21' C.M. Remove Use at Sta. 125+60

125+85 Lt. Inp. 15'x30' S.C. Culv. Remove Use at Sta. 125+60

127+33 Lt. Inp. 15'x22' S.C. Culv. Remove Use at Sta. 112+50

128+20 Lt. Inp. 15'x20' S.C. Culv. Remove Use at Sta. 132+60

128+65 Lt. Inp. 15'x20' S.C. Culv. Remove Use at Sta. 132+60

129+47 Lt. Inp. 15'x20' S.C. Culv. Remove Use at Sta. 132+60

129+99 Lt. Inp. 15'x20' S.C. Culv. Remove Use at Sta. 132+60

130+55 Rt. Inp. 15'x20' C.M. Remove

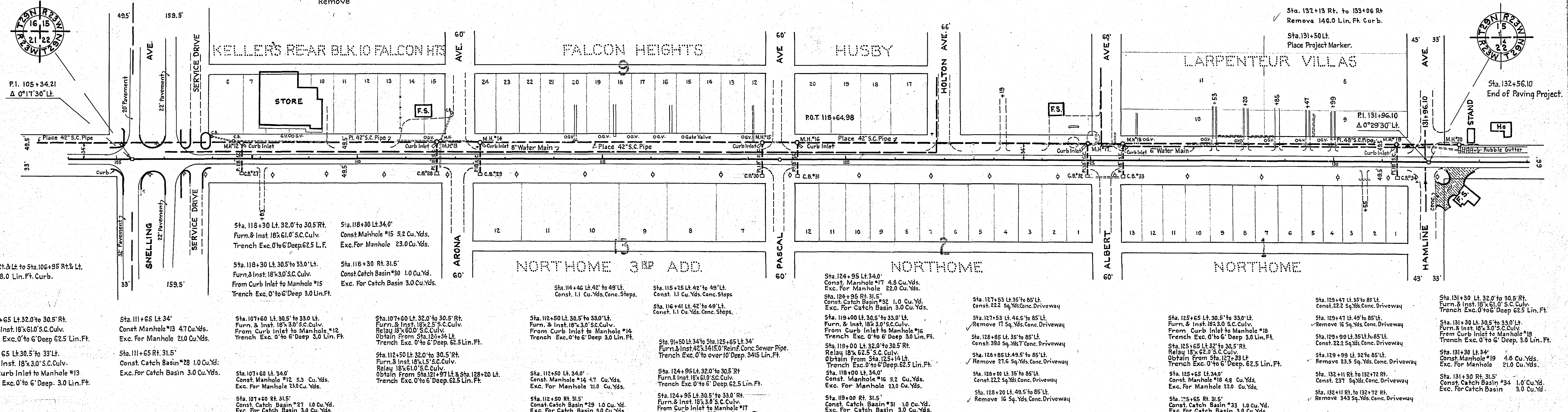
132+08 Lt. Inp. 24'x100' C.M. Remove

132+13 Rt. to 133+06 Rt. Remove 146.0 Lin. Ft. Curb.

131+50 Lt. Place Project Marker.

132+56.10 End of Paving Project.

132+08 Lt. 18' to 131+90 Lt. 18' Inp. 6" Water Main Remove and Construct New Water Main Work to be done by others; not a part of this Contract.



Sta. 104+84 Rt. & Lt. to Sta. 106+95 Rt. & Lt. Remove 588.0 Lin. Ft. Curb.

Sta. 111+65 Lt. 32.0' to 30.5' Rt. Furn. & Inst. 18'x30' S.C. Culv. Trench Exc. 0' to 6' Deep 62.5 Lin. Ft.

Sta. 111+65 Lt. 30.5' to 33' Lt. Furn. & Inst. 18'x30' S.C. Culv. From Curb Inlet to Manhole #13 Trench Exc. 0' to 6' Deep 3.0 Lin. Ft.

Sta. 107+60 Lt. 30.5' to 33.0' Lt. Furn. & Inst. 18'x30' S.C. Culv. From Curb Inlet to Manhole #12 Trench Exc. 0' to 6' Deep 3.0 Lin. Ft.

Sta. 111+65 Lt. 34' Const. Manhole #13 47 Cu.Yds. Exc. For Manhole 21.0 Cu.Yds.

Sta. 107+60 Lt. 30.5' to 33.0' Lt. Furn. & Inst. 18'x30' S.C. Culv. From Curb Inlet to Manhole #12 Trench Exc. 0' to 6' Deep 3.0 Lin. Ft.

Sta. 111+65 Lt. 34' Const. Manhole #13 47 Cu.Yds. Exc. For Manhole 21.0 Cu.Yds.

Sta. 107+60 Lt. 34' Const. Manhole #12 53 Cu.Yds. Exc. For Manhole 23.0 Cu.Yds.

Sta. 107+60 Rt. 31.5' Const. Catch Basin #28 1.0 Cu.Yd. Exc. For Catch Basin 3.0 Cu.Yds.

Sta. 107+60 Lt. 34' Const. Manhole #12 53 Cu.Yds. Exc. For Manhole 23.0 Cu.Yds.

Sta. 107+60 Rt. 31.5' Const. Catch Basin #29 1.0 Cu.Yd. Exc. For Catch Basin 3.0 Cu.Yds.

Sta. 118+30 Lt. 32.0' to 30.5' Rt. Furn. & Inst. 18'x30' S.C. Culv. Trench Exc. 0' to 6' Deep 62.5 L.F.

Sta. 118+30 Lt. 30.5' to 33.0' Lt. Furn. & Inst. 18'x30' S.C. Culv. From Curb Inlet to Manhole #15 Trench Exc. 0' to 6' Deep 3.0 Lin. Ft.

Sta. 118+30 Rt. 31.5' Const. Catch Basin #30 1.0 Cu.Yd. Exc. For Catch Basin 3.0 Cu.Yds.

Sta. 118+30 Lt. 32.0' to 30.5' Rt. Furn. & Inst. 18'x30' S.C. Culv. Trench Exc. 0' to 6' Deep 62.5 Lin. Ft.

Sta. 118+30 Lt. 30.5' to 33.0' Lt. Furn. & Inst. 18'x30' S.C. Culv. From Curb Inlet to Manhole #15 Trench Exc. 0' to 6' Deep 3.0 Lin. Ft.

Sta. 118+30 Rt. 31.5' Const. Catch Basin #30 1.0 Cu.Yd. Exc. For Catch Basin 3.0 Cu.Yds.

Sta. 112+50 Lt. 32.0' to 30.5' Rt. Furn. & Inst. 18'x30' S.C. Culv. Relay 18'x60' S.C. Culv. Obtain from Sta. 124+34 Lt. Trench Exc. 0' to 6' Deep 62.5 Lin. Ft.

Sta. 112+50 Lt. 30.5' to 33.0' Lt. Furn. & Inst. 18'x30' S.C. Culv. Relay 18'x60' S.C. Culv. Obtain from Sta. 124+34 Lt. Trench Exc. 0' to 6' Deep 62.5 Lin. Ft.

Sta. 112+50 Lt. 34' Const. Manhole #14 47 Cu.Yds. Exc. For Manhole 21.0 Cu.Yds.

Sta. 112+50 Lt. 34' Const. Catch Basin #29 1.0 Cu.Yd. Exc. For Catch Basin 3.0 Cu.Yds.

Sta. 112+50 Lt. 34' Const. Manhole #14 47 Cu.Yds. Exc. For Manhole 21.0 Cu.Yds.

Sta. 112+50 Lt. 34' Const. Catch Basin #29 1.0 Cu.Yd. Exc. For Catch Basin 3.0 Cu.Yds.

Sta. 114+46 Lt. 42' to 49' Lt. Const. 1.1 Cu.Yds. Conc. Steps.

Sta. 115+25 Lt. 42' to 49' Lt. Const. 1.1 Cu.Yds. Conc. Steps.

Sta. 116+41 Lt. 42' to 49' Lt. Const. 1.1 Cu.Yds. Conc. Steps.

Sta. 119+00 Lt. 32.0' to 30.5' Lt. Furn. & Inst. 18'x30' S.C. Culv. From Curb Inlet to Manhole #18 Trench Exc. 0' to 6' Deep 3.0 Lin. Ft.

Sta. 119+00 Lt. 32.0' to 30.5' Rt. Relay 18'x62.5' S.C. Culv. Obtain from Sta. 125+14 Lt. Trench Exc. 0' to 6' Deep 62.5 Lin. Ft.

Sta. 119+00 Lt. 34' Const. Manhole #16 52 Cu.Yds. Exc. For Manhole 23.0 Cu.Yds.

Sta. 119+00 Rt. 31.5' Const. Catch Basin #31 1.0 Cu.Yd. Exc. For Catch Basin 3.0 Cu.Yds.

Sta. 124+95 Lt. 34' Const. Manhole #17 48 Cu.Yds. Exc. For Manhole 22.0 Cu.Yds.

Sta. 124+95 Rt. 31.5' Const. Catch Basin #32 1.0 Cu.Yd. Exc. For Catch Basin 3.0 Cu.Yds.

Sta. 124+95 Lt. 34' Const. Manhole #17 48 Cu.Yds. Exc. For Manhole 22.0 Cu.Yds.

Sta. 124+95 Rt. 31.5' Const. Catch Basin #32 1.0 Cu.Yd. Exc. For Catch Basin 3.0 Cu.Yds.

Sta. 124+95 Lt. 34' Const. Manhole #17 48 Cu.Yds. Exc. For Manhole 22.0 Cu.Yds.

Sta. 124+95 Rt. 31.5' Const. Catch Basin #32 1.0 Cu.Yd. Exc. For Catch Basin 3.0 Cu.Yds.

Sta. 124+95 Lt. 34' Const. Manhole #17 48 Cu.Yds. Exc. For Manhole 22.0 Cu.Yds.

Sta. 124+95 Rt. 31.5' Const. Catch Basin #32 1.0 Cu.Yd. Exc. For Catch Basin 3.0 Cu.Yds.

Sta. 124+95 Lt. 34' Const. Manhole #17 48 Cu.Yds. Exc. For Manhole 22.0 Cu.Yds.

Sta. 124+95 Rt. 31.5' Const. Catch Basin #32 1.0 Cu.Yd. Exc. For Catch Basin 3.0 Cu.Yds.

Sta. 124+95 Lt. 34' Const. Manhole #17 48 Cu.Yds. Exc. For Manhole 22.0 Cu.Yds.

Sta. 124+95 Rt. 31.5' Const. Catch Basin #32 1.0 Cu.Yd. Exc. For Catch Basin 3.0 Cu.Yds.

Sta. 124+95 Lt. 34' Const. Manhole #17 48 Cu.Yds. Exc. For Manhole 22.0 Cu.Yds.

Sta. 124+95 Rt. 31.5' Const. Catch Basin #32 1.0 Cu.Yd. Exc. For Catch Basin 3.0 Cu.Yds.

Sta. 124+95 Lt. 34' Const. Manhole #17 48 Cu.Yds. Exc. For Manhole 22.0 Cu.Yds.

Sta. 124+95 Rt. 31.5' Const. Catch Basin #32 1.0 Cu.Yd. Exc. For Catch Basin 3.0 Cu.Yds.

Sta. 125+65 Lt. 32.0' to 30.5' Lt. Furn. & Inst. 18'x30' S.C. Culv. From Curb Inlet to Manhole #18 Trench Exc. 0' to 6' Deep 3.0 Lin. Ft.

Sta. 125+65 Lt. 30.5' to 33.0' Rt. Relay 18'x62.0' S.C. Culv. Obtain from Sta. 127+33 Lt. Trench Exc. 0' to 6' Deep 62.5 Lin. Ft.

Sta. 125+65 Lt. 34' Const. Manhole #19 48 Cu.Yds. Exc. For Manhole 22.0 Cu.Yds.

Sta. 125+65 Rt. 31.5' Const. Catch Basin #33 1.0 Cu.Yd. Exc. For Catch Basin 3.0 Cu.Yds.

Sta. 125+65 Lt. 34' Const. Manhole #19 48 Cu.Yds. Exc. For Manhole 22.0 Cu.Yds.

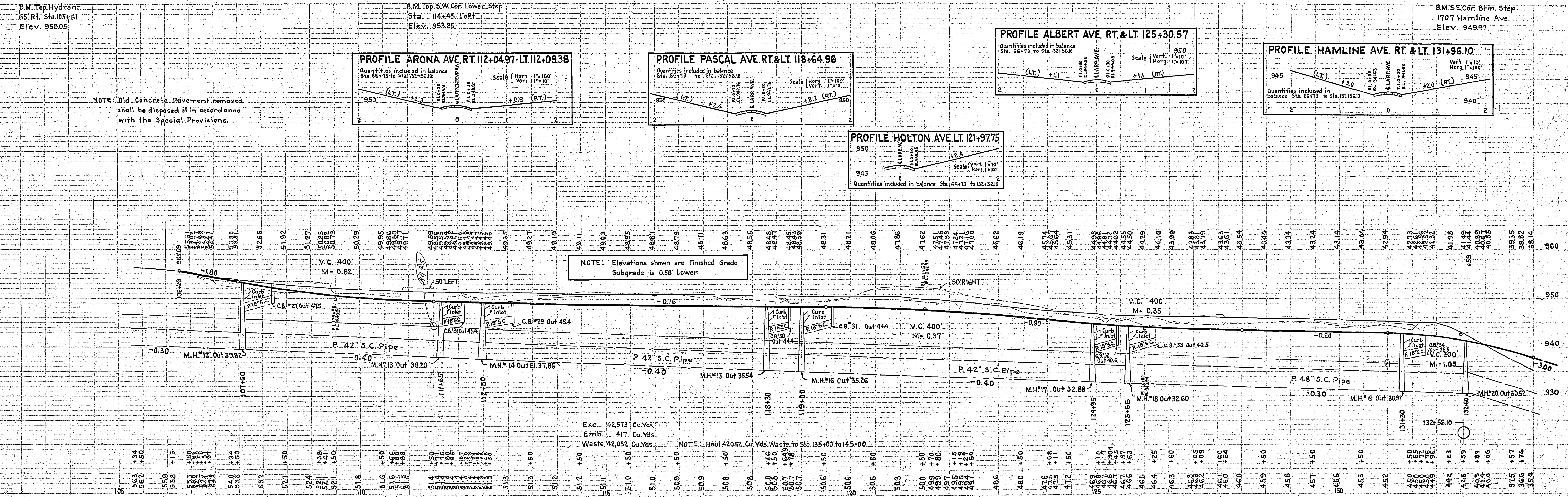
Sta. 125+65 Rt. 31.5' Const. Catch Basin #33 1.0 Cu.Yd. Exc. For Catch Basin 3.0 Cu.Yds.

Sta. 125+65 Lt. 34' Const. Manhole #19 48 Cu.Yds. Exc. For Manhole 22.0 Cu.Yds.

Sta. 125+65 Rt. 31.5' Const. Catch Basin #33 1.0 Cu.Yd. Exc. For Catch Basin 3.0 Cu.Yds.

Sta. 125+65 Lt. 34' Const. Manhole #19 48 Cu.Yds. Exc. For Manhole 22.0 Cu.Yds.

Sta. 125+65 Rt. 31.5' Const. Catch Basin #33 1.0 Cu.Yd. Exc. For Catch Basin 3.0 Cu.Yds.



PLAN  
RESURFACING  
NOTE BOOK  
NO.

PROFILE  
NOTE BOOK  
NO.



