

Manhole #1
Const. 3 L.F.

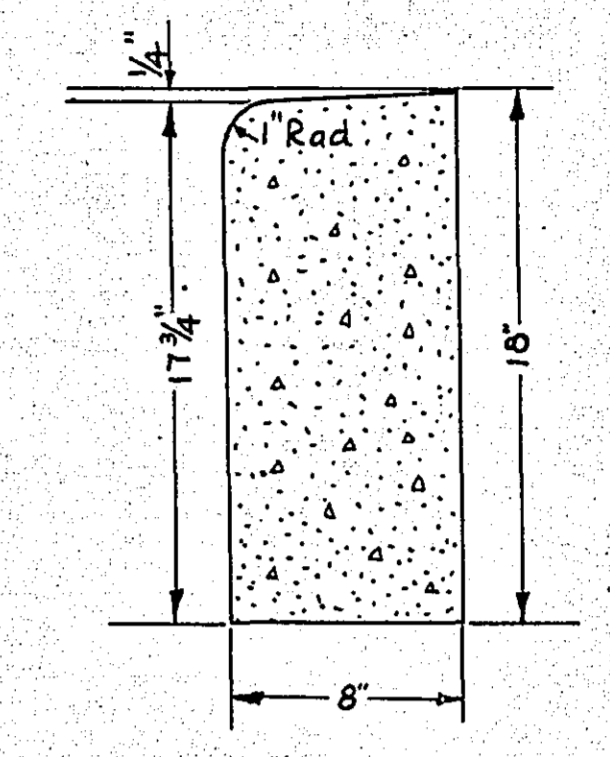
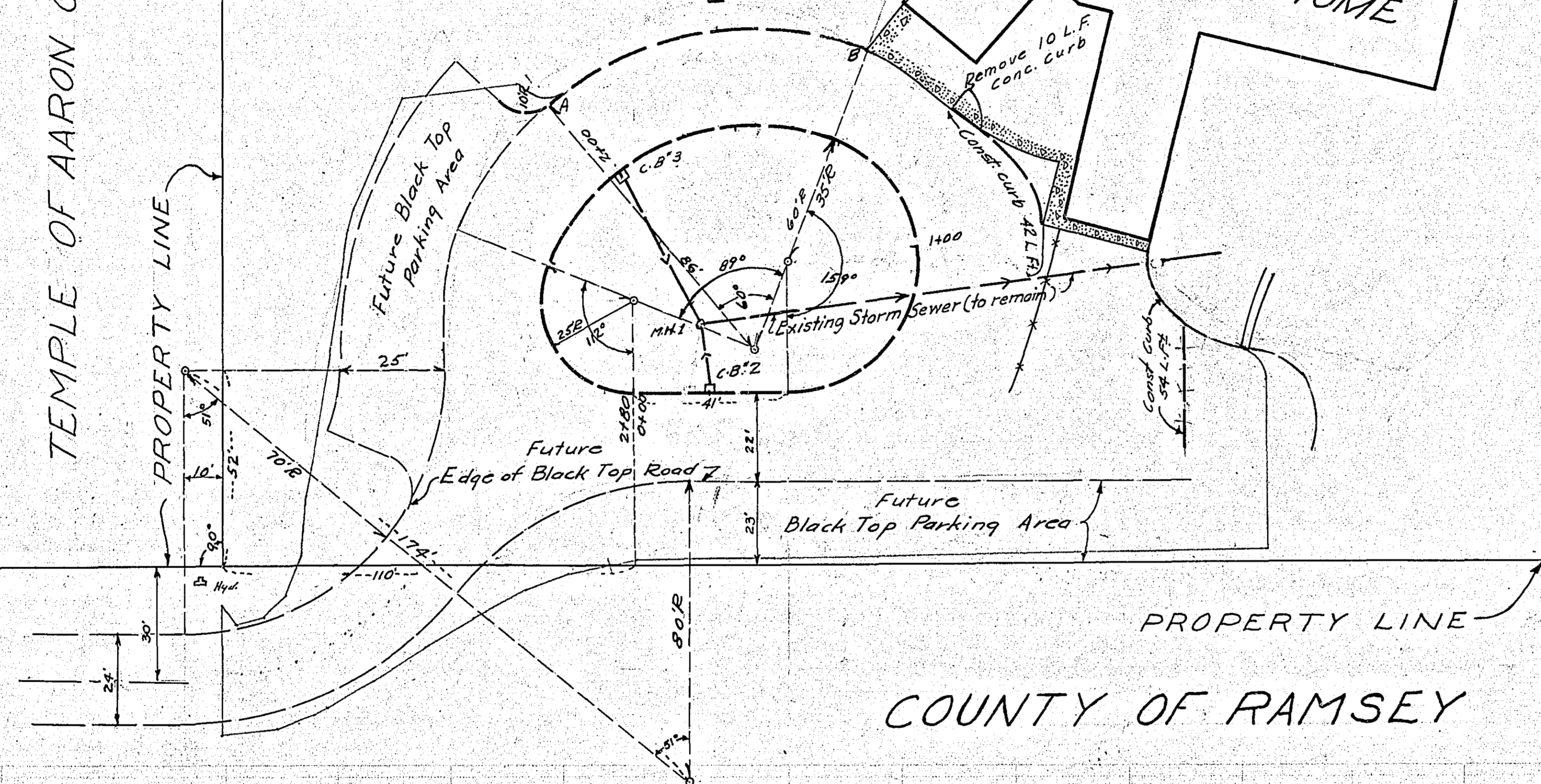
Station 0+20 Const. Catch Basin No. 2 Const. 275 L.F.
F&I. 16 L.F. x 12" C.M. pipe to M.H. 1

Station 2+00 Const. Catch Basin No. 3 Const. 275 L.F.
F&I. 42 L.F. x 12" C.M. pipe to M.H. 1

Proposed
10' x 10' x 16" concrete
manhole
3' x 1' 6" square
to No. 1
at station
1+50.00

TEMPLE OF AARON CEMETERY

WOODVIEW DETENTION HOME

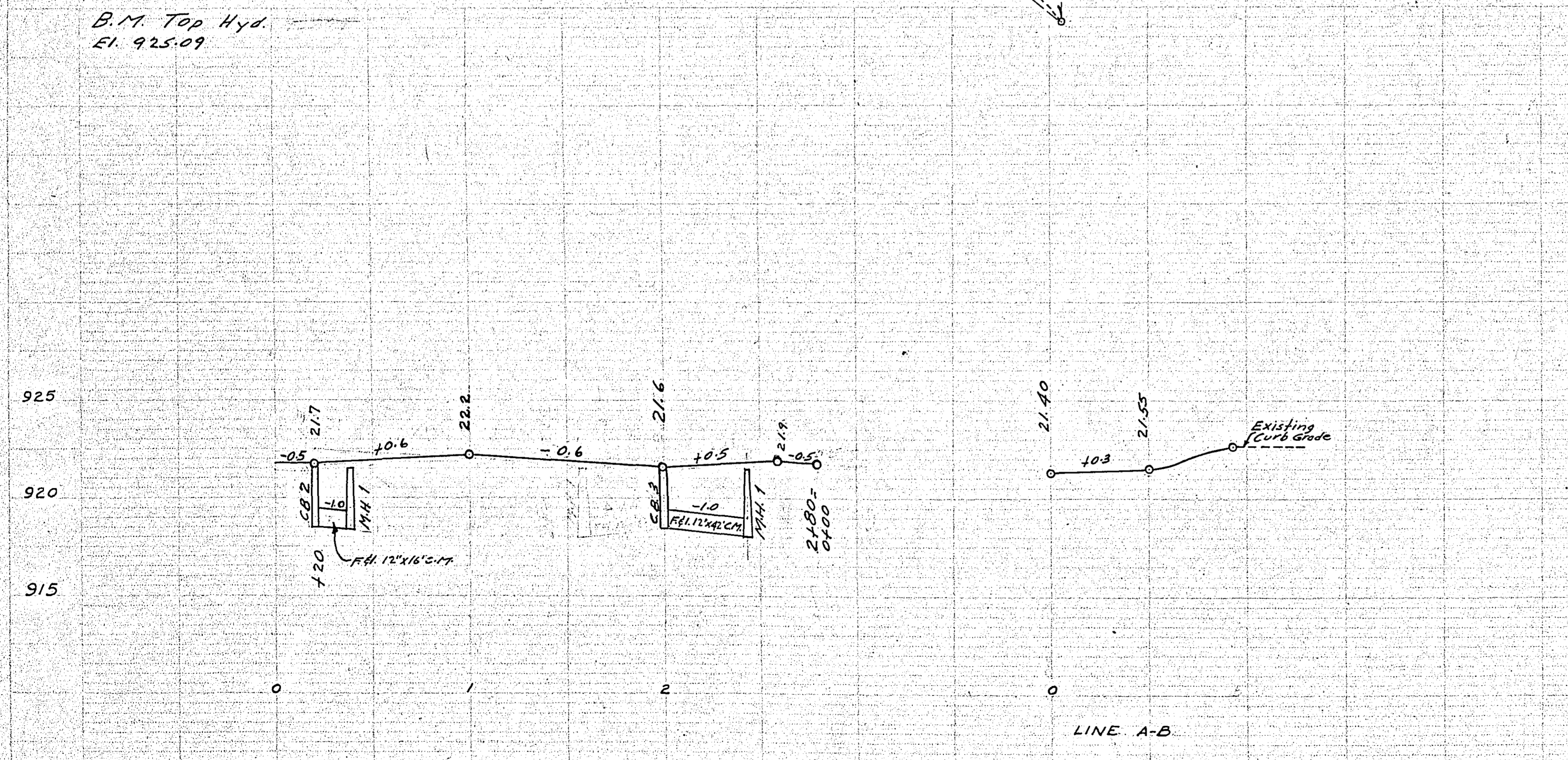


CURB SECTION
scale 3/8" = 1"

PLAN

DATE	
BY	
CHECKED	
APPROVED	

B.M. Top Hyd.
E.L. 925.09



ESTIMATED QUANTITIES			
SPEC. NO.	DESCRIPTION	UNIT	TOTAL ESTIMATED QUANTITIES
2104.504	REMOVE CONCRETE CURB	L.F.	10
2503.514-12	F.&I. C.M.P.S. 12"	L.F.	58
2531.502	F.&I. CONCRETE CURB	L.F.	486
2506.506	CONSTRUCT MANHOLE	L.F.	3
2506.507	CONSTRUCT CATCH BASINS	L.F.	5.5
2506.516	F&I. CASTING ASSEMBLIES	ASSEMBLY	3

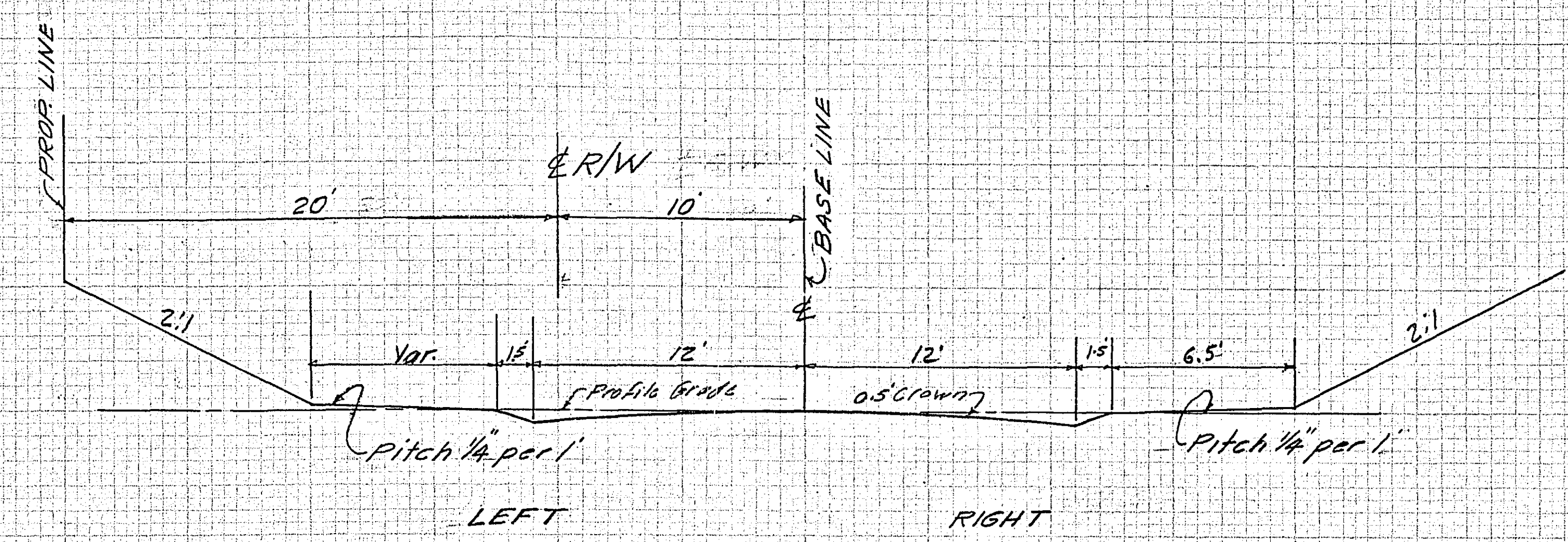
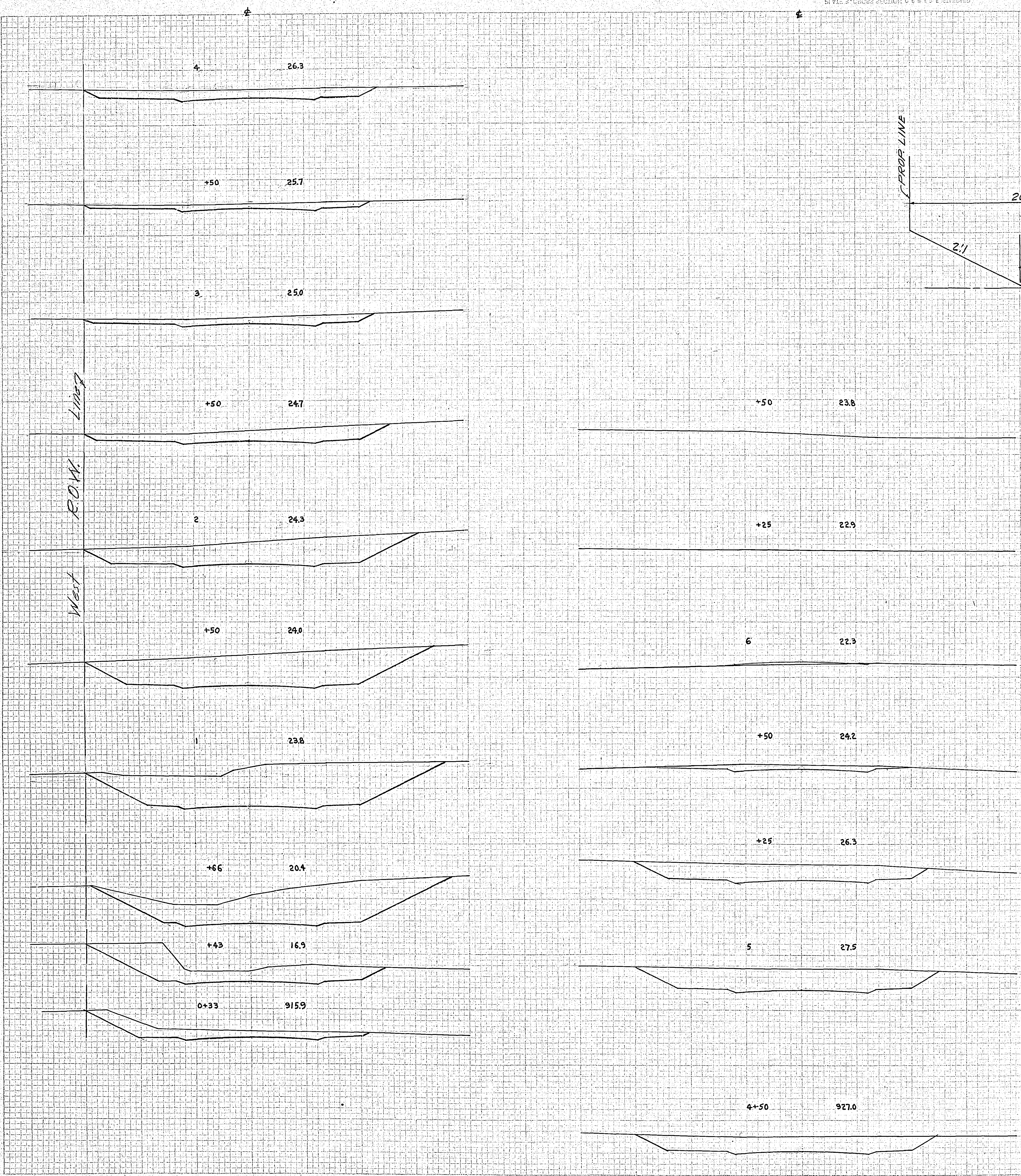
PROFILE

DATE	
BY	
CHECKED	
APPROVED	

OFFICE OF
RAMSEY COUNTY ENGINEER
HARRY S. BRONSON
CURBING PLAN
WOODVIEW DETENTION HOME
AUG. 1958
SCALE AS SHOWN
APPROVED _____

DATE: 9/15/56
 DRAWN BY: J. S. BROWN
 CHECKED BY: H. S. BRONSON
 PROJECT NO. 686

DATE: 9/15/56
 DRAWN BY: J. S. BROWN
 CHECKED BY: H. S. BRONSON
 PROJECT NO. 686



OFFICE OF
 RAMSEY COUNTY ENGINEER
 HARRY S. BRONSON
 GRADING PLAN
 DETENTION RD.
 FROM LARPEN TEUR AVE. NORTH
 SEPT. 1956 SCALE AS SHOWN

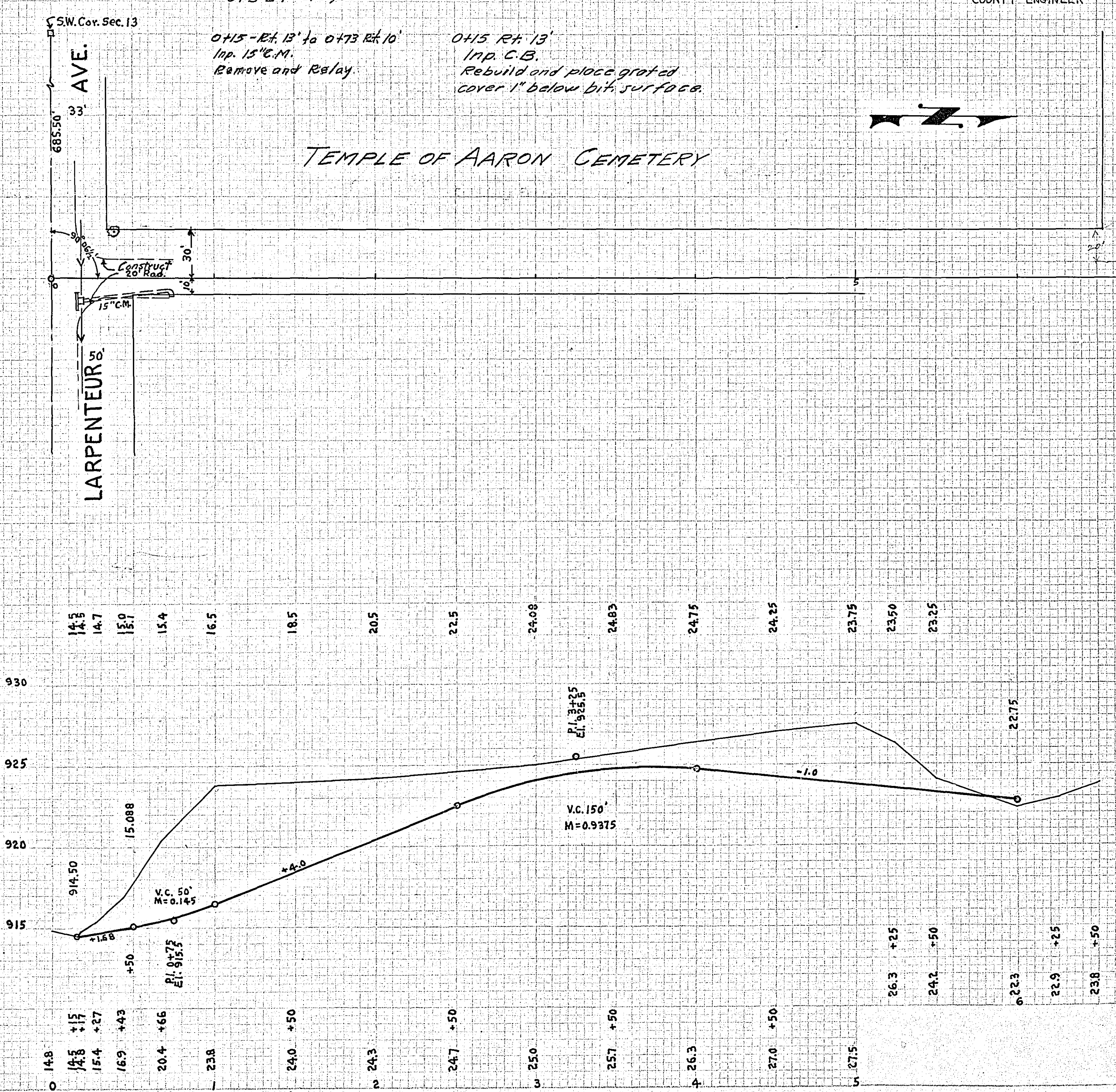
APPROVED _____ COUNTY ENGINEER

B.M. Top of Hyd. on Larpenteur Ave
 600 E. of Dale St.
 E.I. 919.24 - 3/23/50

0+15 - Rk. 13' to 0+73 Rk. 10'
 Imp. 15" C.M.
 Remove and Relay.

0+15 Rk. 13'
 Imp. C.B.
 Rebuild and place graded
 cover 1" below bit surface.

TEMPLE OF AARON CEMETERY



686

686