

CONVENTIONAL SIGNS & ABBREVIATIONS

STATE LINE	-----	EXCAVATIONE
COUNTY LINE	-----	EMBANKMENTF
TOWNSHIP LINE	-----	OVERHAULH
SECTION LINE	-----	SURFACINGS
CITY, VILLAGE, OR BOROUGH	-----	GUARD RAILGR
FENCE LINE	-----	INTERSECTION ANGLEA
RIGHT-OF-WAY LINE	-----	RADIUSR
TRAVELLED WAY	-----	ELEVATIONEI
RAILROADS	-----	VERTICAL CURVEVC
RETAINING WALL	-----	BENCH MARKB.M.
BASE OR SURVEY LINE	-----	SECTIONAL CONCRETE CULVERTP.C.
LEVEE	-----	CORRUGATED METAL CULVERTC.M.
GRAVEL PITG	CULVERT HAULP.H.
SAND PITS	TOW MILEST.M.
CLAY PITC	PLACEP
ROCK QUARRYQ	IN PLACEInp.
CULVERTS	-----	REPLACERep.
PLAIN	-----	RIGHTR
WITH FACEWALLS	-----	LEFTL
WITH WINGWALLS	-----	HAND DITCHINGH.D.
DROP INLETD	POINT OF CURVEP.C.
POWER POLE LINE	-----	POINT OF TANGENTP.T.
TELEPHONE OR TELEGRAPH LINE	-----	POINT OF INTERSECTIONP.I.
MARSHM	SPECIAL EXCAVATIONS.E.
HEDGE, BUSH, OR TIMBERH	SPECIAL FLOWINGS.P.
GROUND ELEVATIONE	TELEPHONE POLET.P.
GRADE ELEVATIONG		

OFFICE OF COUNTY SURVEYOR

RAMSEY COUNTY

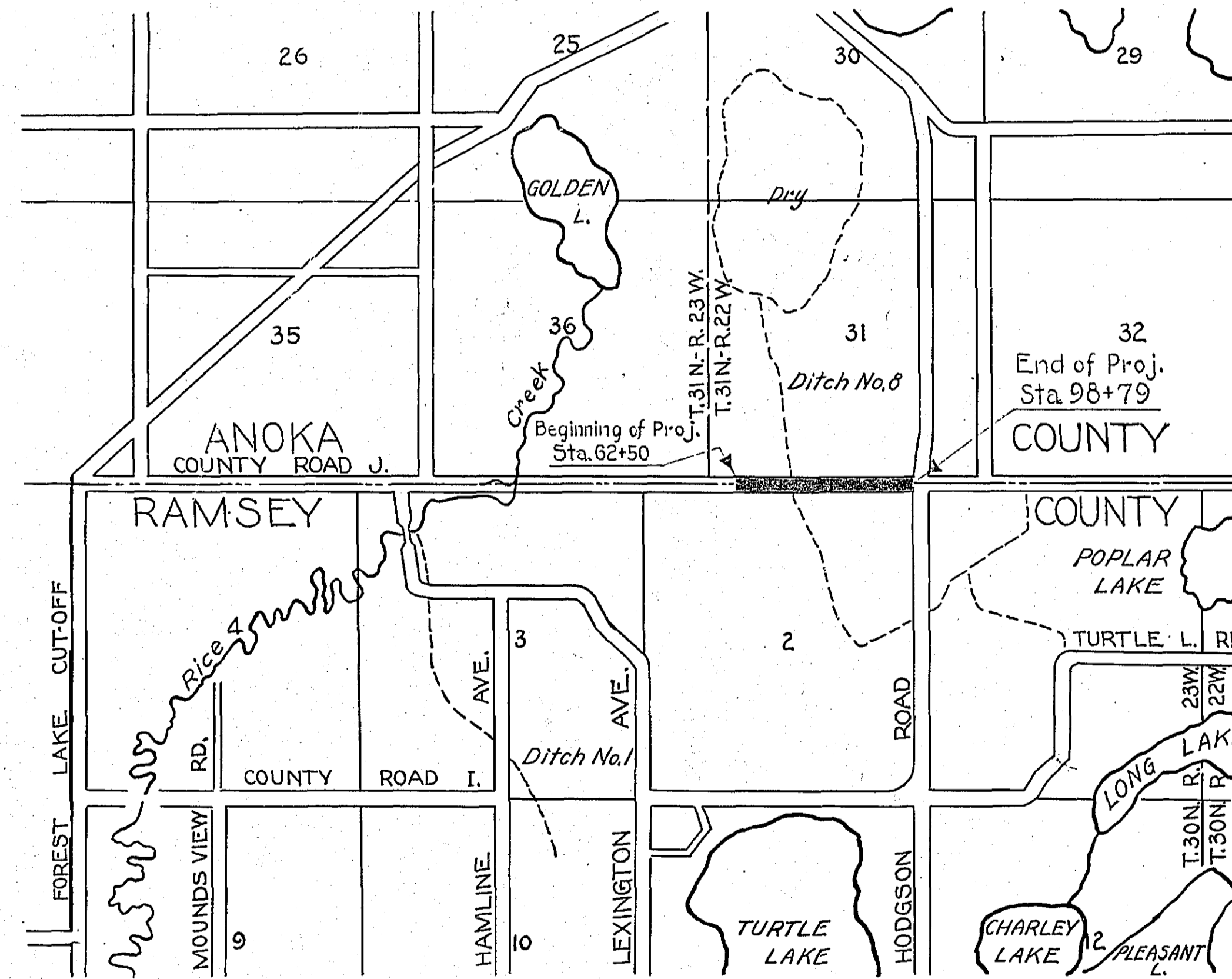
Plan and Profile of County Project No. 35-M20

From A point which is 1651.8 Feet east of the N.W. corner of Sec. 2-30-23 To The N.E. Corner of Sec. 2-30-23

GROSS LENGTH 3615.9 FEET 0.66 MILES
 LENGTH OF EXCEPTIONS FEET MILES
 NET LENGTH 3615.9 FEET 0.66 MILES
 PLAN, 1 Inch = 100 Feet
 PROFILE, Horz. 1 Inch = 100 Feet. Vert. 1 Inch = 10 Feet
 WORKING PLANS { Horz. 1 Inch = 100 Feet
 Vert. 1 Inch = 10 Feet
 Cross-Sections, 1 Inch = 5 Feet
 LAYOUT
 SCALE, 1 Inch = 2640 Feet

INDEX OF SHEETS

Sheet No. 1. Title Sheet and Layout Map
 " No. 2. Typical Cross-Sections and Statement
 " No. 3. Plan and Profile, Sta. 62+50 to Sta. 96+65
 " No. 4, 5 & 6 Cross Sections



Date of Resolution for Preparation of Plans Feb. 18 1935

Planned by M. W. Pihay
 DEPUTY SURVEYOR

Recommended for Approval J. H. Haas
 MAINTENANCE ENGINEER

Plans Approved and Recommended for Consideration Emil H. Blum
 COUNTY SURVEYOR

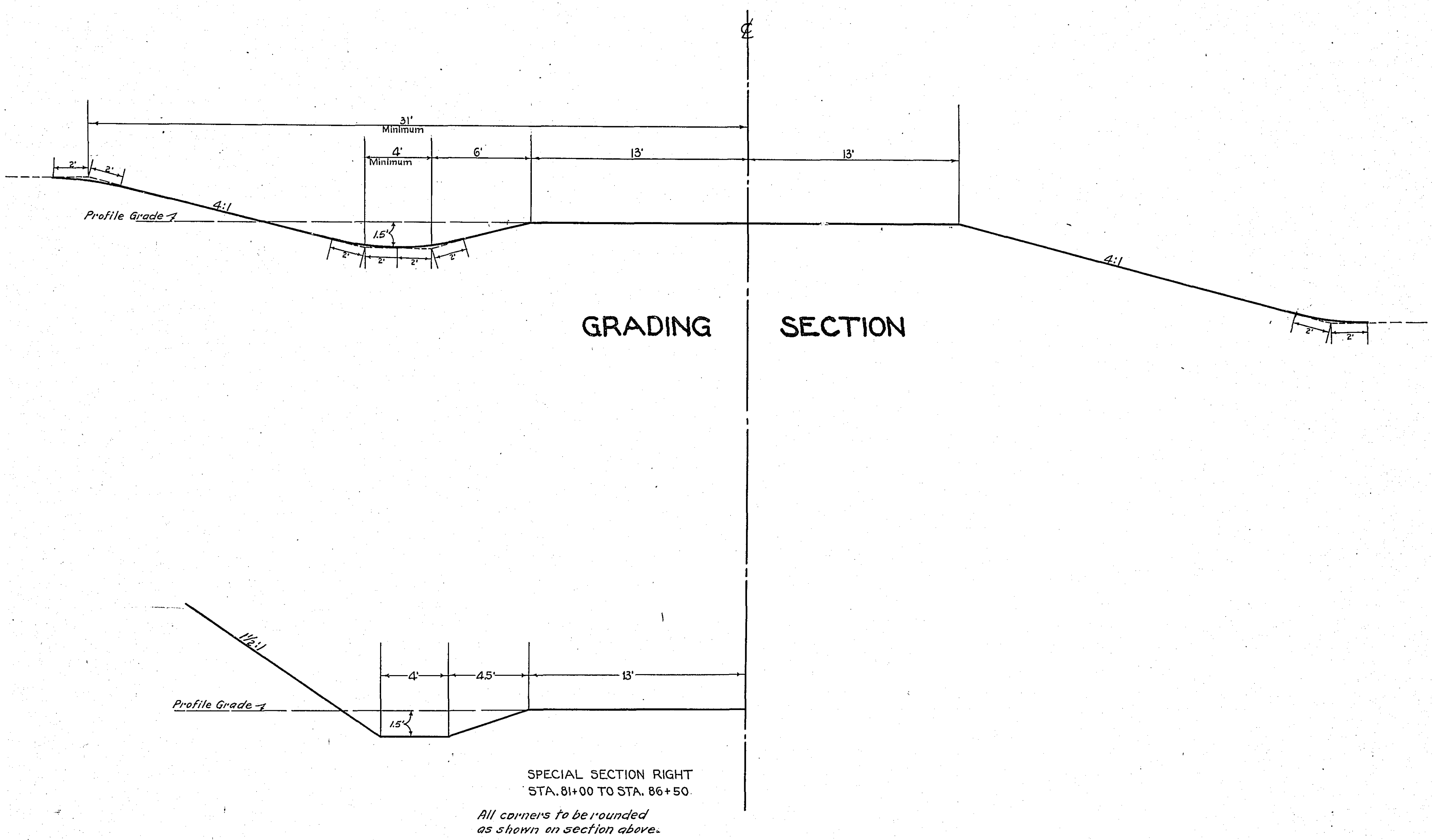
APPROVED March 2 1935 R. H. Skiba
 CHAIRMAN, MOUNDS VIEW TWP. BOARD

Approved by County Board March 4 1935 M. J. ...
 VICE CHAIRMAN OF COUNTY BOARD

STATEMENT OF ESTIMATED QUANTITIES

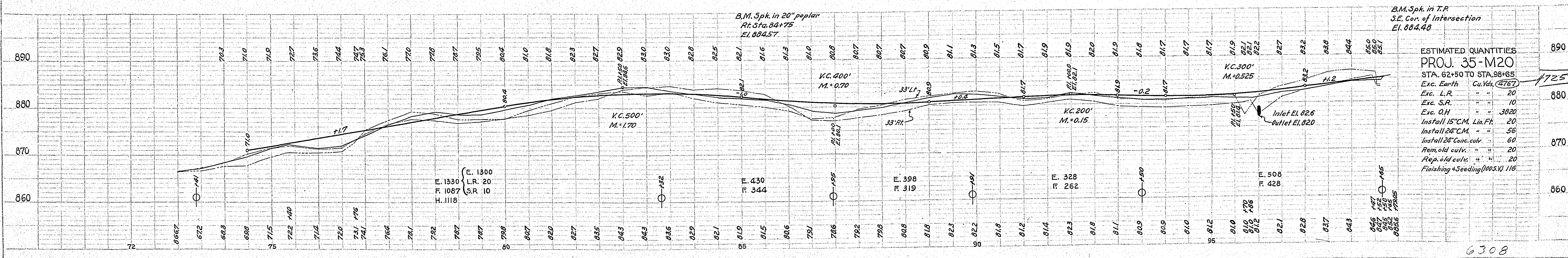
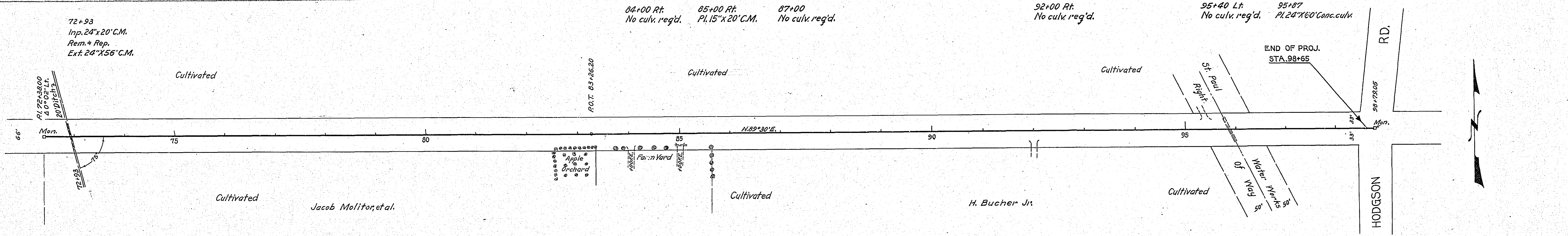
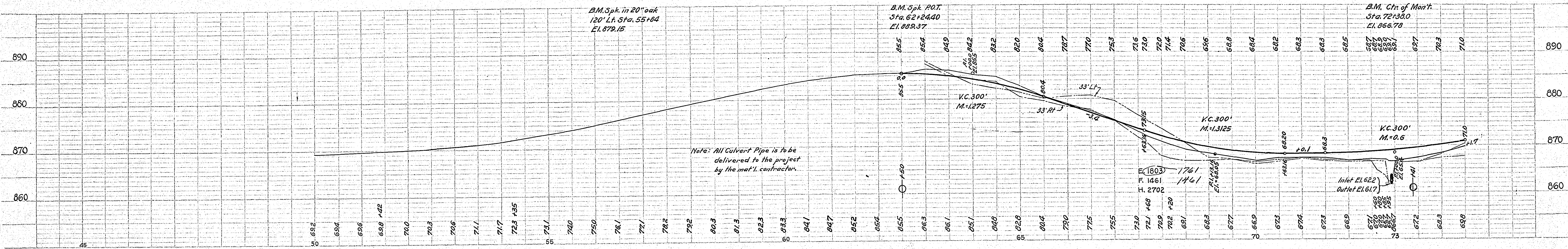
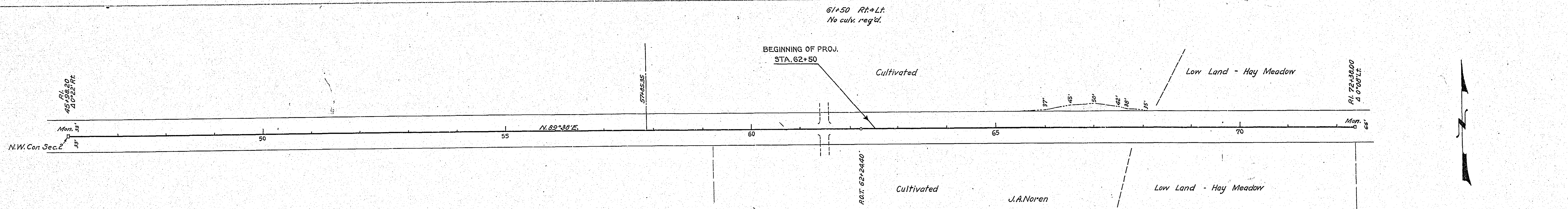
CLASS	ITEM	UNIT	MILE ONE	MILE	MILE	MILE	MILE	MILE	MILE	MILE	MILE	TOTAL ESTIMATED QUANTITIES	
			From G2+50 To 98+65	From To	From To	From To	From To	From To	From To	From To	From To		
GRADING	1	Clearing	Trees										
	2	Grubbing	Trees										
	3	Clearing	Acres										
	4	Grubbing	Acres										
	5	Excavation Earth	Cu. Yds.	4767									4767
	6	Excavation Loose Rock	Cu. Yds.	20									20
	7	Excavation Solid Rock	Cu. Yds.	10									10
	8	Excavation Overhaul	Cu. Yds.	3820									3820
	9	Excavation Special	Cu. Yds.										
	10	Excavation Hand Ditch	Cu. Yds.										
	11	Install 12" C.M.	Lin. Ft.										
	12	Install 15" C.M.	Lin. Ft.	20									20
	13	Install 18" C.M.	Lin. Ft.										
	14	Install 24" C.M.	Lin. Ft.	56									56
	15	Install	Lin. Ft.										
	16	Install	Lin. Ft.										
	17	Install 18" Ps	Lin. Ft.										
	18	Install 24" Ps	Lin. Ft.	60									60
	19	Install 30" Ps	Lin. Ft.										
	20	Install 36" Ps	Lin. Ft.										
	21	Install	Lin. Ft.										
	22	Install	Lin. Ft.										
	23	Remove Old Culvert	Lin. Ft.	20									20
	24	Replace Old Culvert	Lin. Ft.	20									20
	25	Finishing and Seeding	100 SqYds	116									116
	26	Rubble Gutter	Cu. Yds.										
	27	Headwall Concrete	Cu. Yds.										
	28	Headwall Steel	Lbs.										
	29												
	30												
	31												
	32												
C.M. CULVERTS	1	Furnish 12" C.M.	Lin. Ft.										
	2	Furnish 15" C.M.	Lin. Ft.										
	3	Furnish 18" C.M.	Lin. Ft.										
	4	Furnish 24" C.M.	Lin. Ft.										
	5	Furnish	Lin. Ft.										
	6	Furnish	Lin. Ft.										
	7	Furnish 12" C.M. Bond	Each										
	8	Furnish 24" C.M. Bond	Each										
	9												
	10												
P _s CULVERTS	1	Furnish 18" Ps	Lin. Ft.										
	2	Furnish 24" Conc. culv.	Lin. Ft.										
	3	Furnish 30" Ps	Lin. Ft.										
	4	Furnish 36" Ps	Lin. Ft.										
	5												
	6												
GUARD RAIL	1	Guard Rail - Cable	Lin. Ft.										
	2	Guard Rail Anchors	Each										
	3	Dummy Posts	Each										
	4												
SIDEWALKS AND CURBING	1	Concrete Curb - Straight	Lin. Ft.										
	2	Concrete Curb - Radius	Lin. Ft.										
	3	Remove Old Curb	Lin. Ft.										
	4	Remove Old Curb and Gutter	Lin. Ft.										
	5	Remove Old Sidewalk	Sq. Ft.										
	6	Replace Old Sidewalk	Sq. Ft.										
	7	Construct New Sidewalk	Sq. Ft.										
	8	Curb Inlet	Each										
	9	Catch Basin Complete	Each										
	10												
	11												
	12												
SEWER	1	12" Vitrified Sewer Pipe	Lin. Ft.										
	2	15" Vitrified Sewer Pipe	Lin. Ft.										
	3	18" Vitrified Sewer Pipe	Lin. Ft.										
	4	20" Vitrified Sewer Pipe	Lin. Ft.										
	5	24" Vitrified Sewer Pipe	Lin. Ft.										
	6	Manhole Complete	Each										
	7	Catch Basin Complete	Each										
	8												
	9												
	10												
PAVEMENT	1	Pavement - 1 Course Conc.	Sq. Yds.										
	2	Pavement - Asphaltic Conc.	Sq. Yds.										
	3	Integral Curb 8"	Lin. Ft.										
	4	Integral Curb 12"	Lin. Ft.										
	5	Surface Drain	Each										
	6	Surface Drain Basin	Each										
	7	Shoulders - Earth	Lin. Ft.										
	8												
STRUCTURES	1	Concrete	Cu. Yds.										
	2	Reinforcing Steel	Lbs.										
	3	Excavation	Cu. Yds.										
	4	Piling	Lin. Ft.										
	5												

DETAILS



PLAN	REVISIONS
NO.	DATE
1	
2	
3	
4	
5	
6	
7	
8	
9	
10	

PROFILE	REVISIONS
NO.	DATE
1	
2	
3	
4	
5	
6	
7	
8	
9	
10	



ESTIMATED QUANTITIES		
PROJ. 35-M20		
STA. 62+50 TO STA. 98+65		
Exc. Earth	Cu. Yds.	4767
Exc. L.R.	"	20
Exc. S.R.	"	10
Exc. O.H.	"	3820
Install 15" C.M. Lin. Ft.	"	20
Install 24" C.M. " "	"	56
Install 24" Conc. culv.	"	60
Rem. old culv.	"	20
Rep. old culv.	"	20
Finishing + Seeding (0002.5)	116	

6308