

CONVENTIONAL SIGNS & ABBREVIATIONS

STATE LINE.....	-----	EXCAVATION.....	F
COUNTY LINE.....	-----	EMBANKMENT.....	F
TOWNSHIP LINE.....	-----	OVERHAUL.....	H
SECTION LINE.....	-----	SURFACING.....	S
CITY, VILLAGE, OR BOROUGH.....	-----	GUARD RAIL.....	GR
FENCE LINE.....	-----	INTERSECTION ANGLE.....	Δ
RIGHT-OF-WAY LINE.....	-----	RADIUS.....	R
TRAVELLED WAY.....	-----	ELEVATION.....	EI
RAILROADS.....	-----	VERTICAL CURVE.....	VC
RETAINING WALL.....	-----	BENCH MARK.....	B.M.
BASE OR SURVEY LINE.....	-----	SECTIONAL CONCRETE CULVERT.....	P.1
LEVEE.....	-----	CORRUGATED METAL CULVERT.....	C.M.
GRAVEL PIT.....	⊙	CULVERT HAUL.....	P.L.H.
SAND PIT.....	⊙	TON MILES.....	T.M.
CLAY PIT.....	⊙	PLACE.....	P
ROCK QUARRY.....	⊙	IN PLACE.....	INP.
CULVERTS.....	-----	REPLACE.....	Rep.
PLAIN.....	-----	RIGHT.....	R
WITH FACEWALLS.....	-----	LEFT.....	L
WITH WINGWALLS.....	-----	HAND DITCHING.....	H.D.
DROP INLET.....	⊠	POINT OF CURVE.....	P.C.
POWER POLE LINE.....	-----	POINT OF TANGENT.....	P.T.
TELEPHONE OR TELEGRAPH LINE.....	-----	POINT OF INTERSECTION.....	P.I.
MARSH.....	-----	SPECIAL EXCAVATION.....	S.E.
HEDGE, BRUSH, OR TIMBER.....	-----	SPECIAL FLOWING.....	S.P.
GROUND ELEVATION.....	-----	TELEPHONE POLE.....	T.P.
GRADE ELEVATION.....	-----		

OFFICE OF COUNTY SURVEYOR
 RAMSEY COUNTY
 Plan and Profile of County Project No. 34-N21

From A point which is 1303.4' south of the N.Y. Cor. Sec. 24-28-22 To A point which is 1208.0' north of the E. 1/4 cor. Sec. 24-28-22

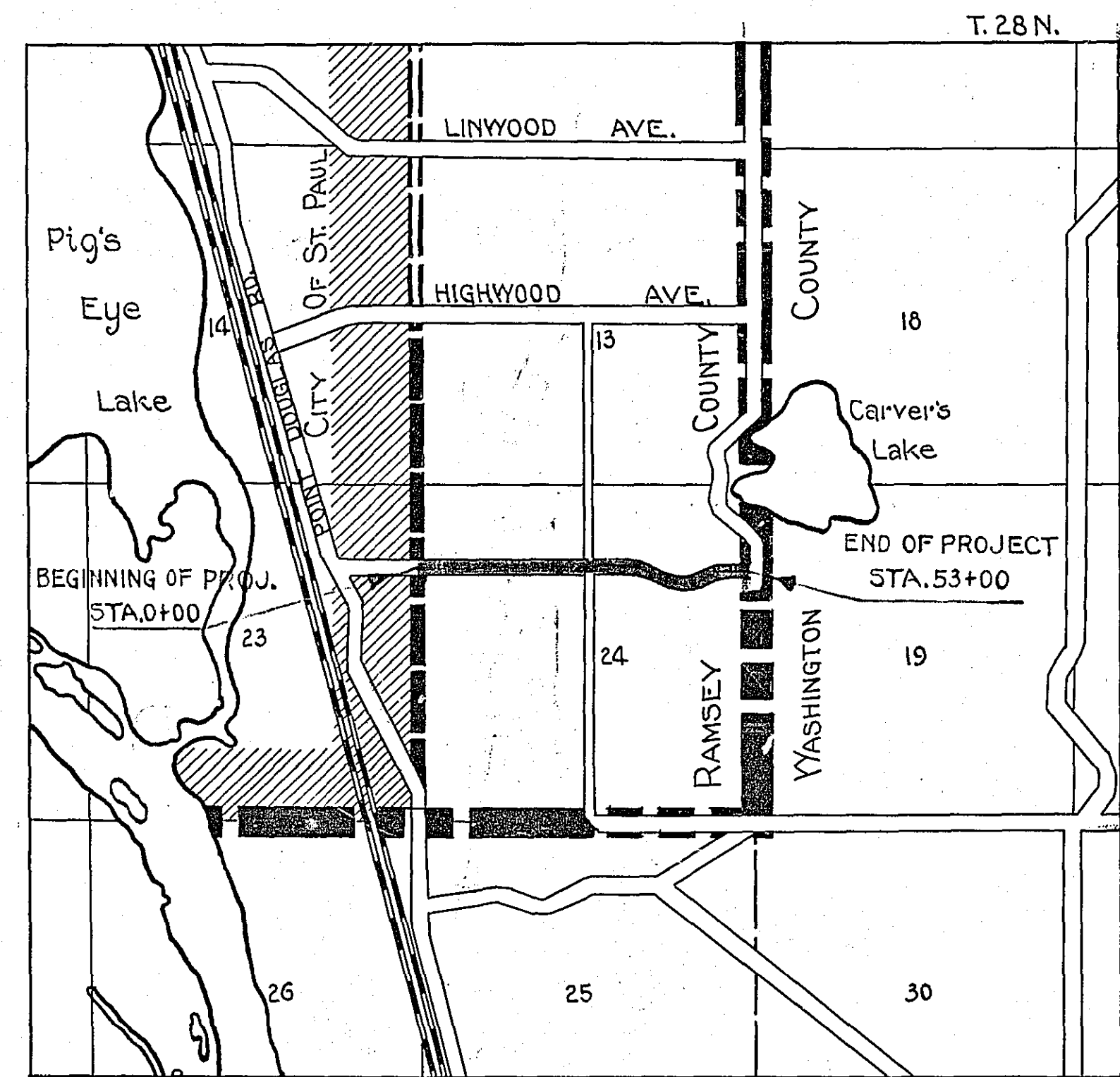
GROSS LENGTH 5300 FEET 1.00 MILES
 LENGTH OF EXCEPTIONS FEET MILES
 NET LENGTH 5300 FEET 1.00 MILES

PLAN, 1 Inch = 100 Feet
 PROFILE, Horz. 1 Inch = 100 Feet, Vert. 1 Inch = 10 Feet
 WORKING PLANS { Horz. 1 Inch = 100 Feet
 Vert. 1 Inch = 10 Feet
 Cross-Sections, 1 Inch = 10 Feet

LAYOUT
 SCALE, 1 Inch = 2640 Feet

INDEX OF SHEETS

Sheet No. 1.	Title Sheet and Layout Map
" No. 2.	Typical Cross-Sections and Statement
" No. 3.	Plan and Profile, Sta. 0+00 to Sta. 26+50
" No. 4.	" " " " 26+50 " " 53+00
" 5, 6, 7 & 8	Cross sections



Date of Resolution for Preparation of Plans Sept 3, 1934

Planned by W. W. Carlsen
ASSISTANT ENGINEER

Recommended for Approval [Signature]
ASSISTANT ENGINEER

Plans Approved and Recommended for Consideration Paul W. Carlsen
COUNTY SURVEYOR

Approved by County Board 19 34 M. H. Schwan
CHAIRMAN OF COUNTY BOARD

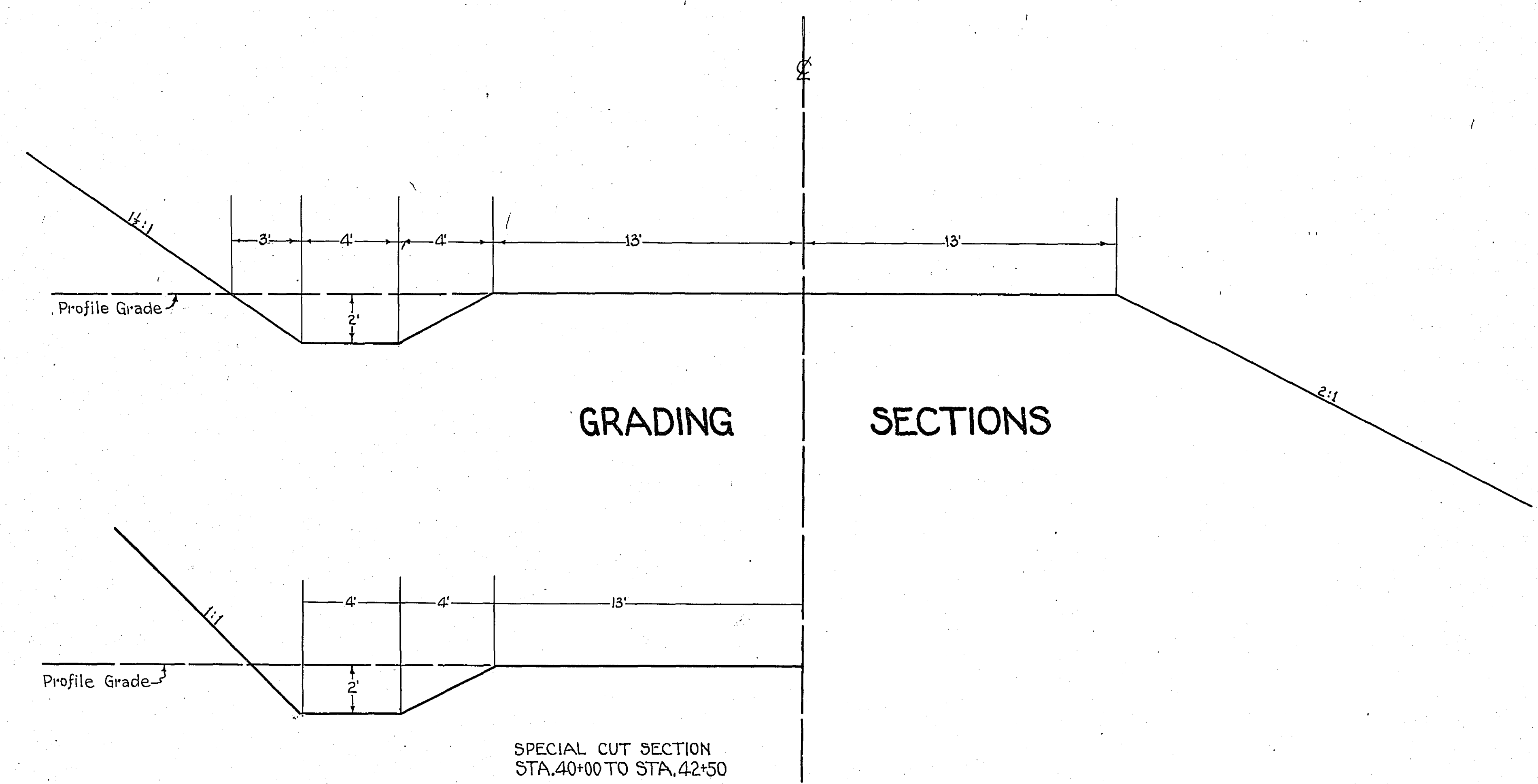
APPROVED 9/15 1934 Levin G. Meecher
CHAIRMAN NEW CANADA TOWN BOARD

STATEMENT OF ESTIMATED QUANTITIES

CLASS	ITEM	UNIT	MILE ONE From 0+00 To 53+00	MILE From To	MILE From To	MILE From To	MILE From To	MILE From To	MILE From To	MILE From To	MILE From To	MILE From To	TOTAL ESTIMATED QUANTITIES
GRADING	1	Clearing	Trees	40									40
	2	Grubbing	Trees	61									61
	3	Clearing	Acres										
	4	Grubbing	Acres										
	5	Excavation Earth	Cu. Yds.	10302									10302
	6	Excavation Loose Rock	Cu. Yds.	100									100
	7	Excavation Solid Rock	Cu. Yds.	40									40
	8	Excavation Overhaul	Cu. Yds.	4157									4157
	9	Excavation Special	Cu. Yds.										
	10	Excavation Hand Ditch	Cu. Yds.										
	11	Install 12" C.M.	Lin. Ft.										
	12	Install 15" C.M.	Lin. Ft.	116									116
	13	Install 18" C.M.	Lin. Ft.										
	14	Install 24" Culv.	Lin. Ft.	78									78
	15	Install 42" C.M.	Lin. Ft.	14									14
	16	Install	Lin. Ft.										
	17	Install 18" Ps	Lin. Ft.										
	18	Install 24" Ps	Lin. Ft.										
	19	Install 30" Ps	Lin. Ft.										
	20	Install 36" Ps	Lin. Ft.										
	21	Install	Lin. Ft.										
	22	Install	Lin. Ft.										
	23	Remove Old Culvert	Lin. Ft.	193									193
	24	Replace Old Culvert	Lin. Ft.	175									175
	25	Finishing and Seeding	100 Sq.Yds.										
	26	Rubble Gutter	Cu. Yds.										
	27	Headwall Concrete	Cu. Yds.										
	28	Headwall Steel	Lbs.										
29													
30													
31													
32													
C.M. CULVERTS	1	Furnish 12" C.M.	Lin. Ft.										
	2	Furnish 15" C.M.	Lin. Ft.	116									116
	3	Furnish 18" C.M.	Lin. Ft.										
	4	Furnish 24" Culv.	Lin. Ft.	78									78
	5	Furnish 42" C.M.	Lin. Ft.	14									14
	6	Furnish	Lin. Ft.										
	7	Furnish 42" C.M. Band	Each	2									2
	8	Furnish 15" C.M. Band	Each										
9													
10													
P ₃ CULVERTS	1	Furnish 18" P ₃	Lin. Ft.										
	2	Furnish 24" P ₃	Lin. Ft.										
	3	Furnish 30" P ₃	Lin. Ft.										
	4	Furnish 36" P ₃	Lin. Ft.										
5													
6													
GUARD RAIL	1	Guard Rail - Cable	Lin. Ft.	1875									1875
	2	Guard Rail Anchors	Each	14									14
	3	Dummy Posts	Each										
	4												
SIDEWALKS AND CURBING	1	Concrete Curb - Straight	Lin. Ft.										
	2	Concrete Curb - Radius	Lin. Ft.										
	3	Remove Old Curb	Lin. Ft.										
	4	Remove Old Curb and Gutter	Lin. Ft.										
	5	Remove Old Sidewalk	Sq. Ft.										
	6	Replace Old Sidewalk	Sq. Ft.										
	7	Construct New Sidewalk	Sq. Ft.										
	8	Curb Inlet	Each										
	9	Catch Basin Complete	Each										
	10												
	11												
	12												
SEWER	1	12" Vitrified Sewer Pipe	Lin. Ft.										
	2	15" Vitrified Sewer Pipe	Lin. Ft.										
	3	18" Vitrified Sewer Pipe	Lin. Ft.										
	4	20" Vitrified Sewer Pipe	Lin. Ft.										
	5	24" Vitrified Sewer Pipe	Lin. Ft.										
	6	Manhole Complete	Each										
	7	Catch Basin Complete	Each										
8													
9													
10													
PAVEMENT	1	Pavement - 1 Course Conc.	Sq. Yds.										
	2	Pavement - Asphaltic Conc.	Sq. Yds.										
	3	Integral Curb - 8"	Lin. Ft.										
	4	Integral Curb - 12"	Lin. Ft.										
	5	Surface Drain	Each										
	6	Surface Drain Basin	Each										
	7	Shoulders - Earth	Lin. Ft.										
	8												
STRUCTURES	1	Concrete	Cu. Yds.										
	2	Reinforcing Steel	Lbs.										
	3	Excavation	Cu. Yds.										
	4	Piling	Lin. Ft.										
	5												
6													
7													
8													
9													
10													

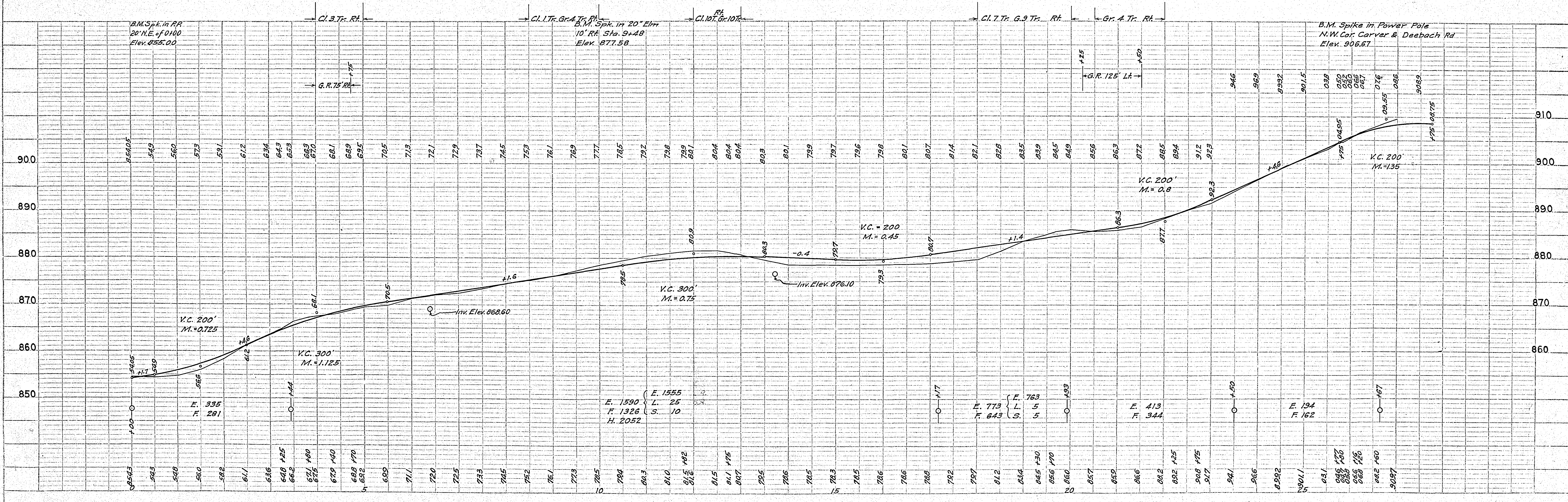
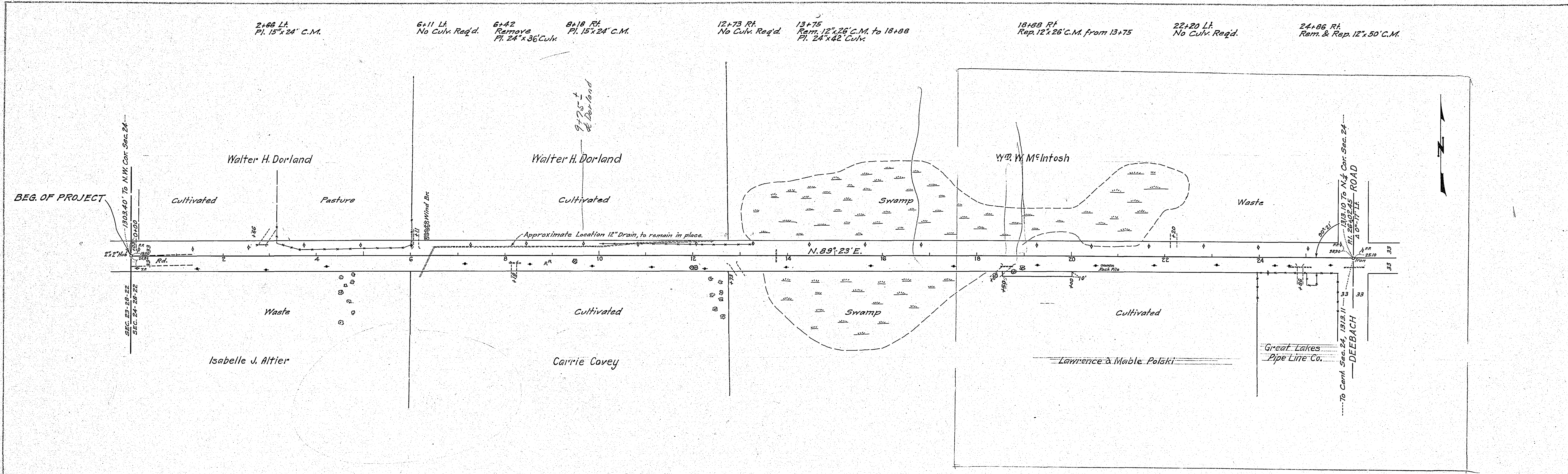
DETAILS

CARVER AVENUE
PROJECT 34-N21



PLAN	REVISED	DATE
NO. BOOK	PLOTTED	
NOTE BOOK	ALIGNED CHECKED	
NO.	BY	

PROFILE	REVISED	DATE
NO. BOOK	PLOTTED	
NOTE BOOK	ALIGNED CHECKED	
NO.	BY	

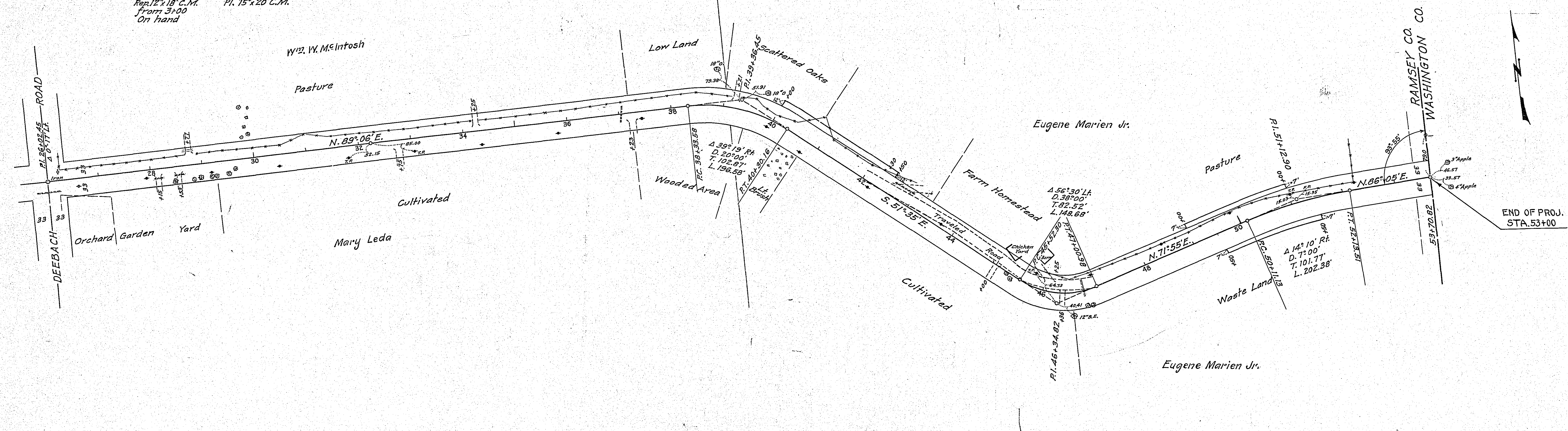


FLATE 1 - PLAN-PROFILE OF P.R.R. & STANDARD
 NEWFELL & SESSER CO. NEW YORK

Ramey County Project No. 34-N21 Sheet 3 of 8 sheets

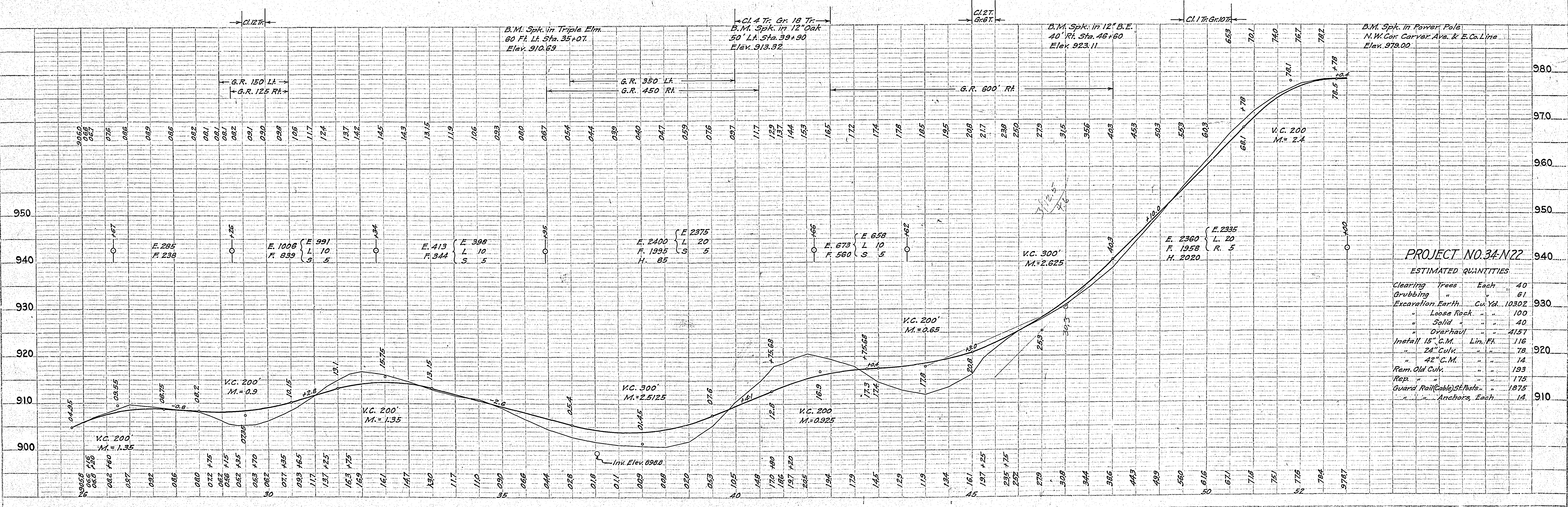
Carver 6305

26+02 Rt. Rem. & Rep. 12"x14" C.M.
 28+53 Rt. Rep. 12"x14" C.M. from 3+00 On hand
 28+15 Rt. Rep. 12"x18" C.M. from 3+00 On hand
 28+77 Lt. Pl. 15"x20" C.M.
 32+75 Rt. No Culv. Req'd.
 34+25 Lt. No Culv. Req'd.
 37+04 Trp. 42"x30.5" C.M. Extend 42"x14" C.M.
 37+23 Rt. No Culv. Req'd.
 39+21 Lt. No Culv. Req'd.
 42+30 Lt. Pl. 15"x24" C.M.
 45+00 Rt. No Culv. Req'd.
 46+25 Lt. Pl. 15"x24" C.M.
 46+36 Rt. No Culv. Req'd.
 46+74 Rem. 12"x34" C.M. to Sta. 28+53 Rt.



DATE	
BY	
REVIEWED	
PLANNED	
NOTED	
NO.	

DATE	
BY	
REVIEWED	
PLANNED	
NOTED	
NO.	



PROJECT NO. 34-N22

ESTIMATED QUANTITIES

Clearing Trees	Each	40
Grubbing	"	61
Excavation Earth	Cu. Yd.	10302
Loose Rock	"	100
Solid	"	40
Overhaul	"	4157
Install 15" C.M.	Lim. Ft.	116
24" Culv.	"	78
42" C.M.	"	14
Rem. Old Culv.	"	193
Rep.	"	175
Guard Rail (Cable) Straps	"	1875
Anchors	Each	14

PLATE 1 - PLAN-PROFILE O. F. S. R. E. STANDARD
 HOFFEL & KESER CO., NEW YORK

Ramsey County Project No. 34-N22 Sheet 4 of 8 sheets

CARVER AVE. 6305